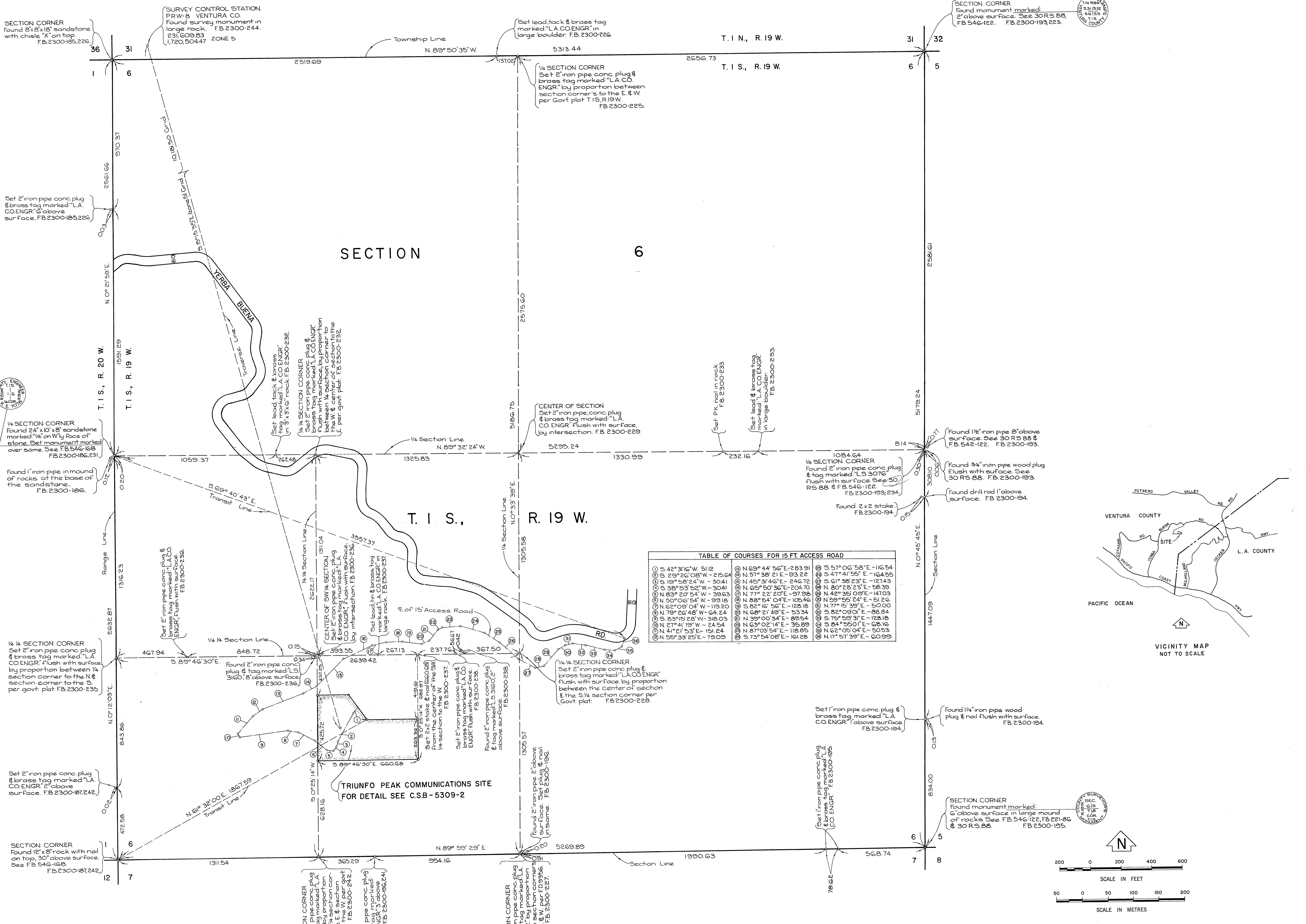


C-2 B-5309-1



SECTION CORNER  
Found 8"x8" sandstone  
with chisel 'X' on top  
F.B. 2300-185,226

SURVEY CONTROL STATION  
PRW-8 VENTURA CO.  
Found survey monument in  
large rock. F.B. 2300-244.  
231,609.83  
1,720,504.47 ZONE 5

Set lead, tack & brass tag  
marked "L.A. CO ENGR" in  
large boulder. F.B. 2300-226

SECTION CORNER  
Found monument marked  
2" above surface. See 30 R.S. 88  
& F.B. 546-122. F.B. 2300-193,225.

Set 2" iron pipe conc. plug  
& brass tag marked "L.A.  
CO ENGR" 6" above  
surface. F.B. 2300-185,226

1/4 SECTION CORNER  
Set 2" iron pipe conc. plug &  
brass tag marked "L.A. CO  
ENGR" by proportion between  
section corners to the E. & W.  
per Govt. plat. F.B. 2300-225.

1/4 SECTION CORNER  
Found 24" x 10" x 8" sandstone  
marked "1/4" on Wly face of  
stone. Set monument marked  
over same. See F.B. 546-122  
& F.B. 2300-186,231

Found 1" iron pipe in mound  
of rocks, at the base of  
the sandstone.  
F.B. 2300-186.

Set lead, tack & brass  
tag marked "L.A. CO ENGR"  
in 3"x3 1/2" rock. F.B. 2300-232.

1/4 SECTION CORNER  
Set 2" iron pipe conc. plug &  
brass tag marked "L.A. CO ENGR"  
flush with surface by proportion  
between 1/4 section corners to  
the E. & W. per Govt. plat. F.B. 2300-232.

CENTER OF SECTION  
Set 2" iron pipe conc. plug  
& brass tag marked "L.A.  
CO ENGR" flush with surface  
by intersection. F.B. 2300-229

Set 1/4" Pl. tail in rock  
F.B. 2300-233

Set lead & brass tag  
marked "L.A. CO ENGR"  
in large boulder.  
F.B. 2300-233.

Found 1 1/2" iron pipe 2" above  
surface. See 30 R.S. 88 &  
F.B. 542-122. F.B. 2300-193.

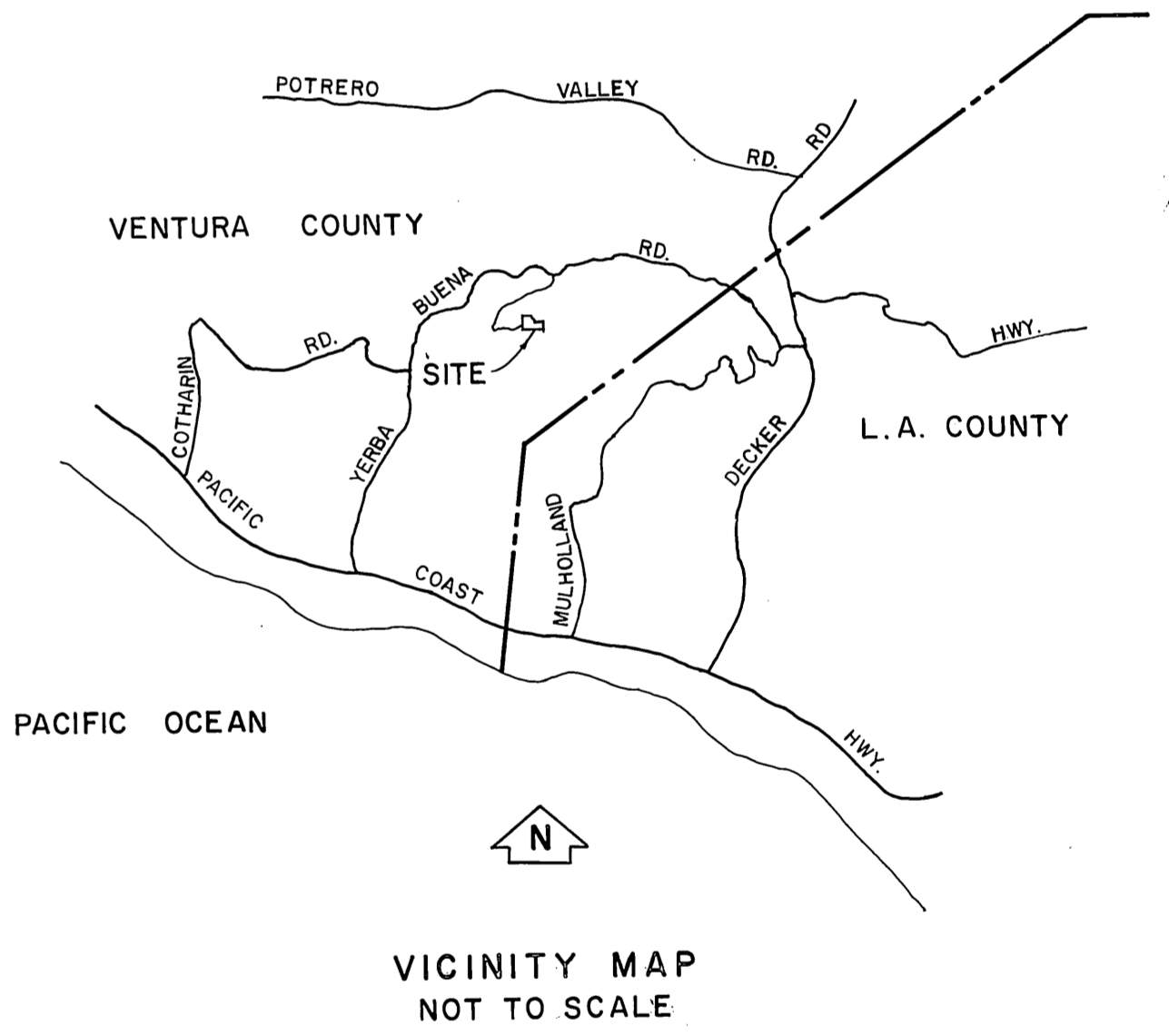
Found 3/4" iron pipe wood plug  
flush with surface. See  
30 R.S. 88. F.B. 2300-193.

Found drill rod 1" above  
surface. F.B. 2300-194.

Found 2 x 2 stake.  
F.B. 2300-194.

TABLE OF COURSES FOR 15 FT ACCESS ROAD

1 42° 31' 16" W - 51.12	11 N 69° 44' 56" E - 283.91	21 S 57° 06' 58" E - 116.54
2 29° 26' 08" W - 215.64	12 N 51° 38' 21" E - 93.22	22 S 47° 41' 55" E - 164.55
3 18° 58' 24" W - 30.41	13 N 45° 31' 46" E - 246.72	23 S 61° 38' 23" E - 127.43
4 38° 53' 52" W - 30.41	14 N 65° 50' 36" E - 204.70	24 S 80° 28' 23" E - 58.39
5 N 83° 20' 54" W - 39.63	15 N 77° 22' 20" E - 97.98	25 N 42° 35' 09" E - 147.03
6 N 50° 06' 54" W - 99.18	16 N 88° 54' 04" E - 105.46	26 N 59° 55' 24" E - 51.26
7 N 63° 09' 04" W - 119.20	17 S 88° 16' 58" E - 128.18	27 N 77° 15' 39" E - 50.00
8 N 78° 28' 48" W - 66.24	18 N 68° 21' 49" E - 53.34	28 S 82° 09' 01" E - 88.84
9 S 83° 15' 28" W - 318.05	19 N 39° 00' 34" E - 89.54	29 S 75° 59' 31" E - 128.18
10 N 27° 41' 19" W - 24.54	20 N 63° 02' 14" E - 35.89	30 S 84° 55' 01" E - 68.16
11 N 41° 21' 53" E - 151.24	21 N 87° 03' 54" E - 118.85	31 N 62° 05' 04" E - 50.53
12 N 55° 33' 25" E - 79.09	22 S 73° 54' 08" E - 161.28	32 N 17° 57' 39" E - 60.99



1/4 SECTION CORNER  
Set 2" iron pipe conc. plug  
& brass tag marked "L.A.  
CO ENGR" flush with surface  
by proportion between 1/4  
section corners to the N &  
section corner to the S.  
per Govt. plat. F.B. 2300-235

Set 2" iron pipe conc. plug &  
brass tag marked "L.A. CO  
ENGR" flush with surface.  
F.B. 2300-236.

CENTER OF SW 1/4 SECTION  
Set 2" iron pipe conc. plug  
& brass tag marked "L.A. CO  
ENGR" flush with surface.  
by intersection. F.B. 2300-236.

Set lead, tack & brass tag  
marked "L.A. CO ENGR" in  
large rock. F.B. 2300-237.

1/4 SECTION CORNER  
Set 2" iron pipe conc. plug &  
brass tag marked "L.A. CO ENGR"  
flush with surface by proportion  
between the center of section  
& the S 1/4 section corner per  
Govt. plat. F.B. 2300-228.

Set 1" iron pipe conc. plug &  
brass tag marked "L.A.  
CO ENGR" 1" above surface.  
F.B. 2300-194.

Found 1 1/4" iron pipe wood  
plug & nail flush with surface.  
F.B. 2300-194.

Set 2" iron pipe conc. plug  
& brass tag marked "L.A.  
CO ENGR" 2" above  
surface. F.B. 2300-187,242.

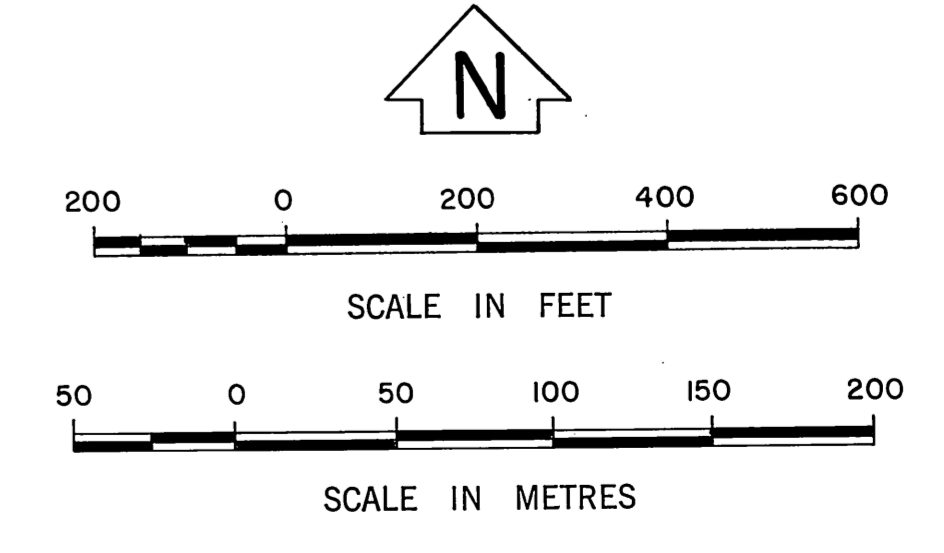
SECTION CORNER  
Found 12"x8" rock with nail  
on top, 30" above surface.  
See F.B. 546-122.  
F.B. 2300-187,242.

Set 2" iron pipe conc. plug  
& brass tag marked "L.A.  
CO ENGR" 3" above  
surface. F.B. 2300-196,244.

1/4 SECTION CORNER  
Set 2" iron pipe conc. plug  
& brass tag marked "L.A.  
CO ENGR" by proportion  
between section corners  
to the E. & W. per Govt.  
plat. F.B. 2300-227.

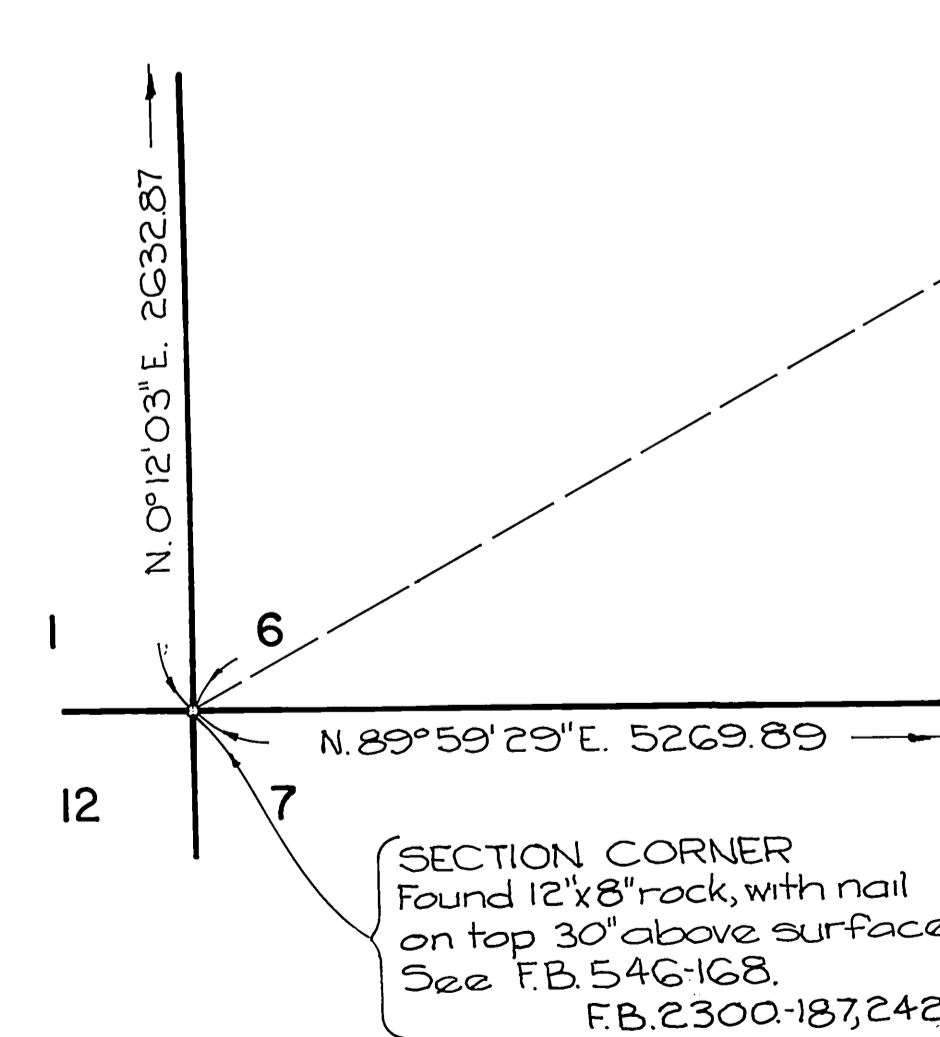
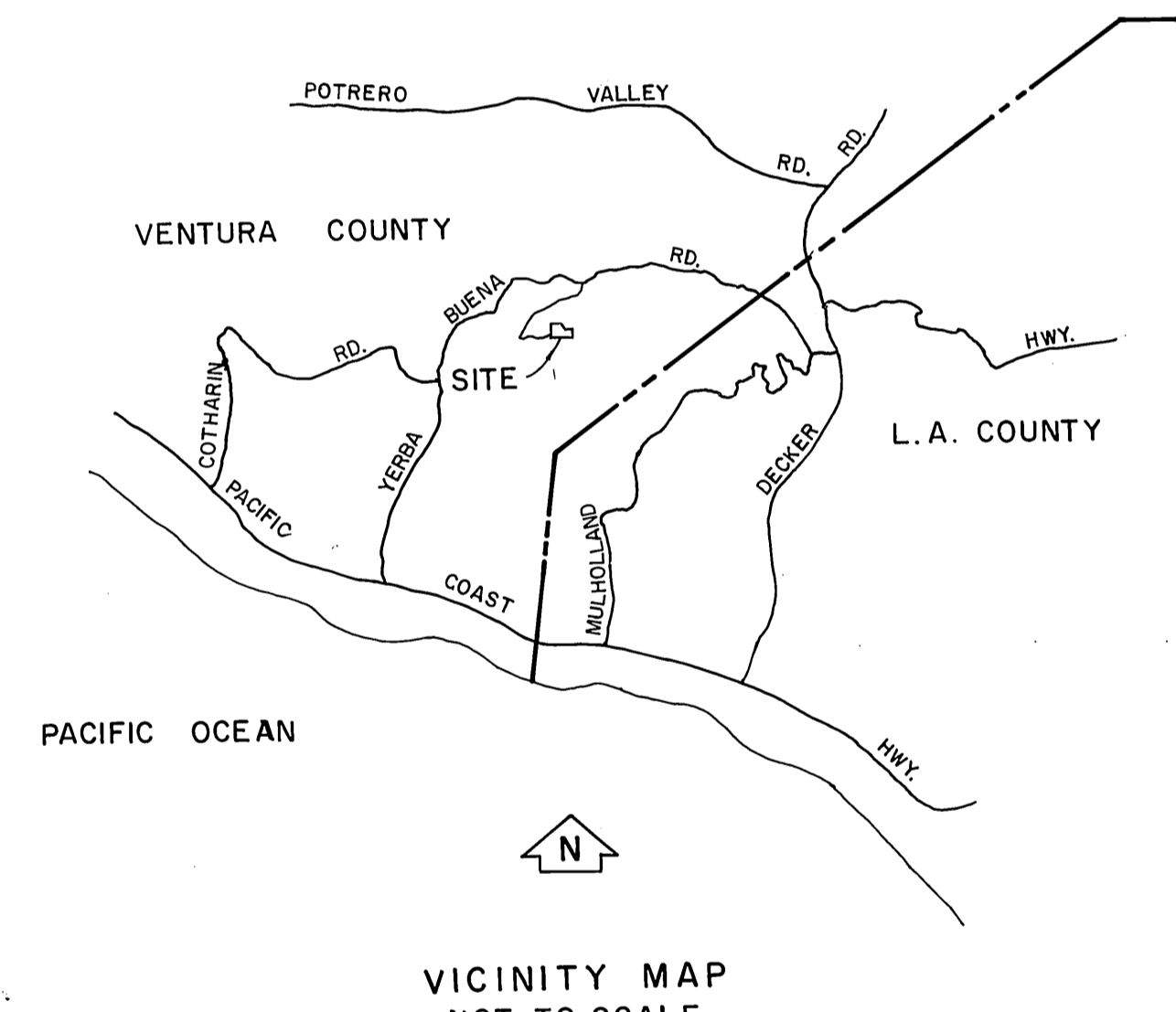
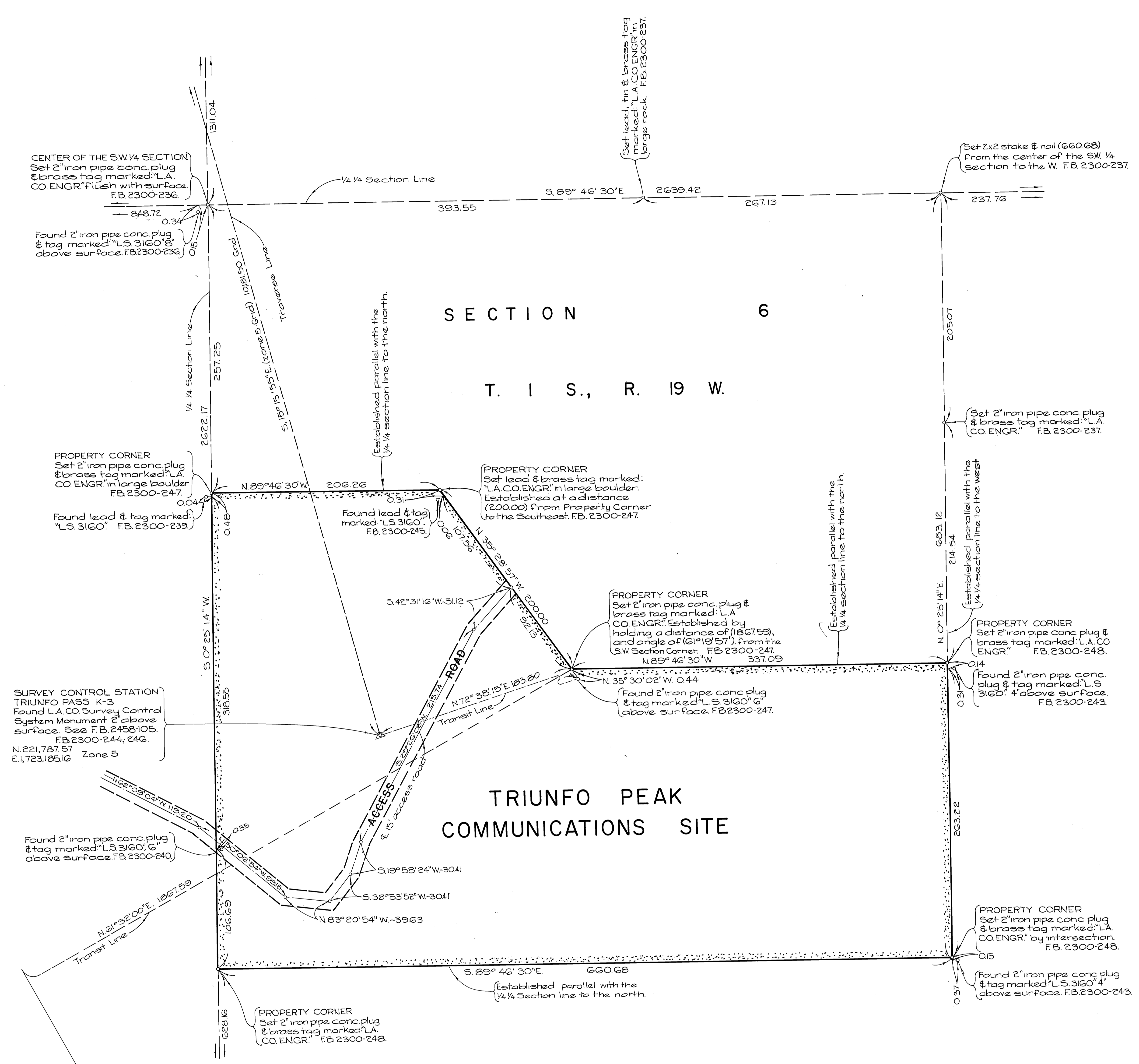
Set 1" iron pipe conc. plug  
& brass tag marked "L.A.  
CO ENGR" 1" above surface.  
F.B. 2300-195.

SECTION CORNER  
Found monument marked:  
6" above surface in large mound  
of rocks. See F.B. 546-122, F.B. 231-86  
& 30 R.S. 88. F.B. 2300-195.

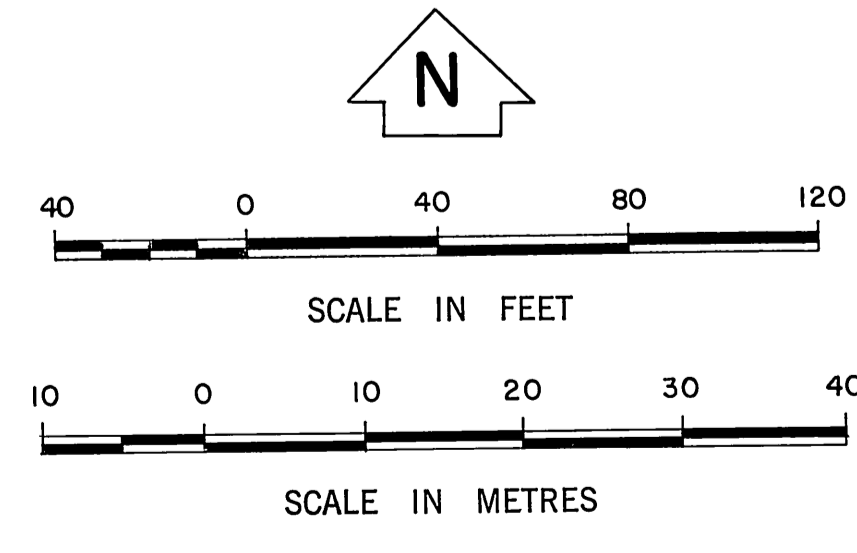


Note:  
This map has been filed in  
the office of the County Surveyor  
of Ventura County and is indexed  
as "A.K. 108-A".  
Dated: Nov 4, 1980-A.M.

COUNTY OF LOS ANGELES <b>DEPARTMENT OF          COUNTY ENGINEER</b> <small>STEPHEN J. KOONCE-ACTING COUNTY ENGINEER</small> SURVEY DIVISION RICHARD J. MITCHELL-DIVISION ENGINEER R. STRADER SURVEYED BY J. FERRANDIA CHECKED BY T. ABE DRAWN BY C. MOTEN	<b>MAP OF SECTION BREAKDOWN FOR          TRIUNFO PEAK          COMMUNICATIONS SITE</b> COUNTY OF VENTURA FOR TOPOGRAPHY SEE SURVEY DIVISION FILE MAP NO. PT. J 145 BASIS OF BEARINGS CALIFORNIA COORDINATE SYSTEM ZONE 5		COUNTY SURVEYOR'S MAP NO. <b>B-5309</b> SHEET 1 OF 2 SHEETS FILED: <i>[Signature]</i> 1977 DEPUTY SURVEYED R. STRADER SEPTEMBER, 1976 - MAY 1976 REFERENCE F.B. 2300 JOB NUMBER 0018, 63 INDEX MAP NO. VENTURA COUNTY	REVISION NO. BY DATE



NOTE:  
FOR BREAKDOWN OF SECTION 6  
T. 1 S., R. 19 W. SEE C.S.B-5309-1



Note:  
This map has been filed in  
the office of the County Surveyor  
of Ventura County and is indexed  
as "A.K. 108-B." Dated: Nov. 4, 1980-A.M.

COUNTY OF LOS ANGELES <b>DEPARTMENT OF          COUNTY ENGINEER</b> PREPARED BY SURVEY DIVISION RICHARD J. MITCHELL - DIVISION ENGINEER R. STRADER SURVEYED BY J. TERRANOVA CHECKED BY T. ABE DRAWN BY C. MOTEN	<b>BOUNDARY MAP OF          TRIUNFO PEAK          COMMUNICATIONS SITE          COUNTY OF VENTURA</b>  FOR TOPOGRAPHY SEE SURVEY DIVISION FILE MAP NO. PT. J145 BASIS OF BEARINGS CALIFORNIA COORDINATE SYSTEM ZONE 5	COUNTY SURVEYOR'S MAP NO. <b>B-5309</b> SHEET 2 OF 2 SHEETS FILED <i>March 23, 1977</i> <i>Richard J. Mitchell</i> DEPUTY SURVEYED SEPTEMBER 1975 - MAY 1976. REFERENCE F.B. 2300	REVISION NO. BY DATE
		JOB NUMBER 0018-63	INDEX MAP NO. VENTURA COUNTY