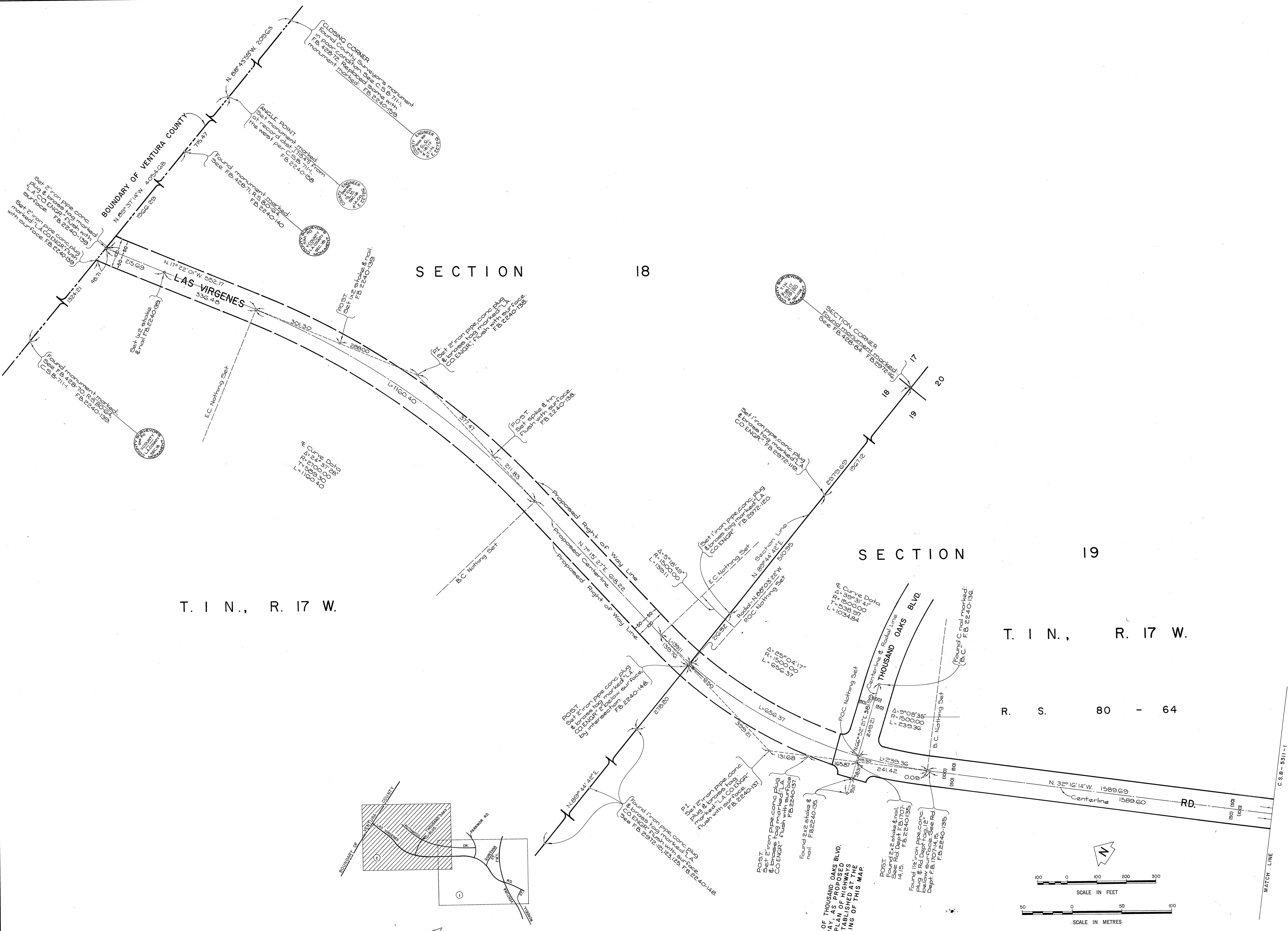




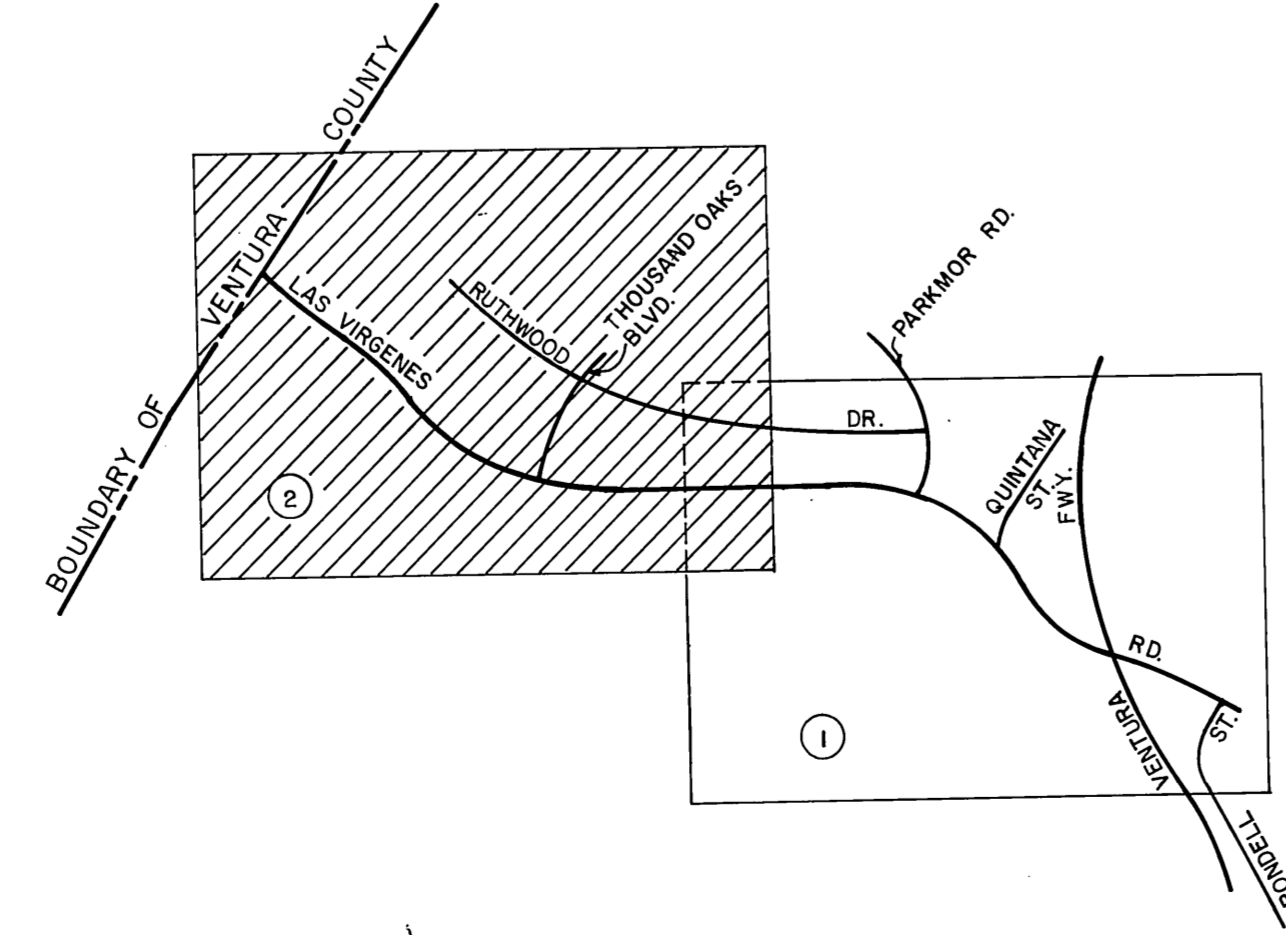
C-11123-B-23



T. 1 N., R. 17 W.

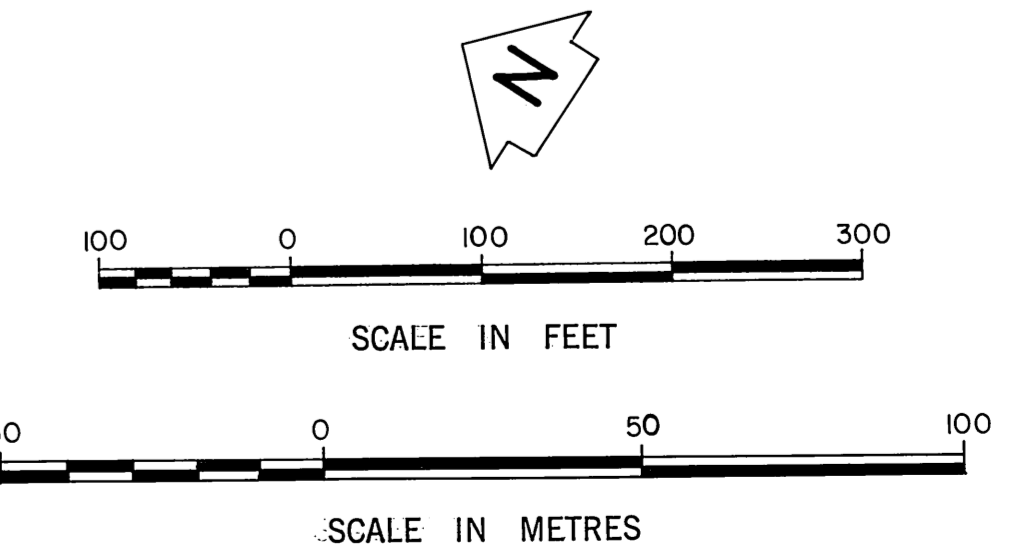
T. 1 N., R. 17 W.

R. S. 80 - 64



INDEX MAP NOT TO SCALE

NOTE:  
THE ALIGNMENT OF THOUSAND OAKS BLVD.  
ON THE MAJOR HIGHWAY WAS PROPOSED  
HAD NOT BEEN ESTABLISHED AT THE  
TIME OF THE FILING OF THIS MAP.



COUNTY OF LOS ANGELES DEPARTMENT OF COUNTY ENGINEER STEPHEN J. KOONCE - ACTING COUNTY ENGINEER PREPARED BY SURVEY DIVISION RICHARD J. MITCHELL - DIVISION ENGINEER SURVEYED BY R. DALE CHECKED BY C. TOY DRAWN BY C. MOTEN	ALIGNMENT MAP OF <b>LAS VIRGENES RD.</b> FROM VENTURA FREEWAY TO <b>BOUNDARY OF VENTURA COUNTY</b> BASIS OF BEARINGS CALIFORNIA COORDINATE SYSTEM, ZONE 7		COUNTY SURVEYOR'S MAP NO. <b>B-5311</b> SHEET 2 OF 2 SHEETS FILED: <i>Jan 1 1977</i> DEPUTY SURVEYOR JANUARY, 1975 - DECEMBER, 1976 REFERENCE F.B. 2240, F.B. 3138, F.B. 2972, F.B. 2336 JOB NUMBER 0096.07 INDEX MAP NO. 159-057	REVISION NO. BY DATE