

SURVEY CONTROL STATION
LA LIEBRE RANCHO M-8 (WHEAT)
Found U.S.G. & G.S. Survey
control system monument.
See F.B. 5136-163, 169
N 4, 407, 637, 740
E 4, 093, 994, 41
1970 Adjustment
F. B. 4137-210

SURVEY CONTROL STATION
LA LIEBRE MTN. 0-1
Found L.A. CO. Survey control
system monument. See F.B.
2543-121
F.B. 4137-210
N 4, 384, 357, 41
E 4, 095, 345, 07
1970 Adjustment

CLOSING CORNER
Found monument marked 2
above surface and 0.05' south-
erly of line. Reset same on line
2' above surface by intersection.
See F.B. 652-36, 38, C.S.B-1709
F.B. 4137-191.

Set 1" iron pipe concrete plug
and brass tag marked "L.A."
CO. ENGR. 1' above surface.
F.B. 4137-191.

Set 1" iron pipe concrete plug
and brass tag marked "L.A."
CO. ENGR. 1' above surface.
F.B. 4137-192.

SECTION CORNER
Found monument marked
flush with surface. See F.B.
652-37, 43, C.S.B-1709.
F.B. 4137-192.

STATION NO. 5 RANCHO LA LIEBRE
Set monument marked 2
above surface. By 185 per
F.B. 652-210. See F.B. 652-
36, 271 and C.S.B-1709.
F.B. 4137-195.

Set 1" iron pipe concrete plug
and brass tag marked "L.A."
CO. ENGR. 1' above surface.
F.B. 4137-204.

Set 1" iron pipe concrete plug
and brass tag marked "L.A."
CO. ENGR. 1' above surface.
F.B. 4137-206.

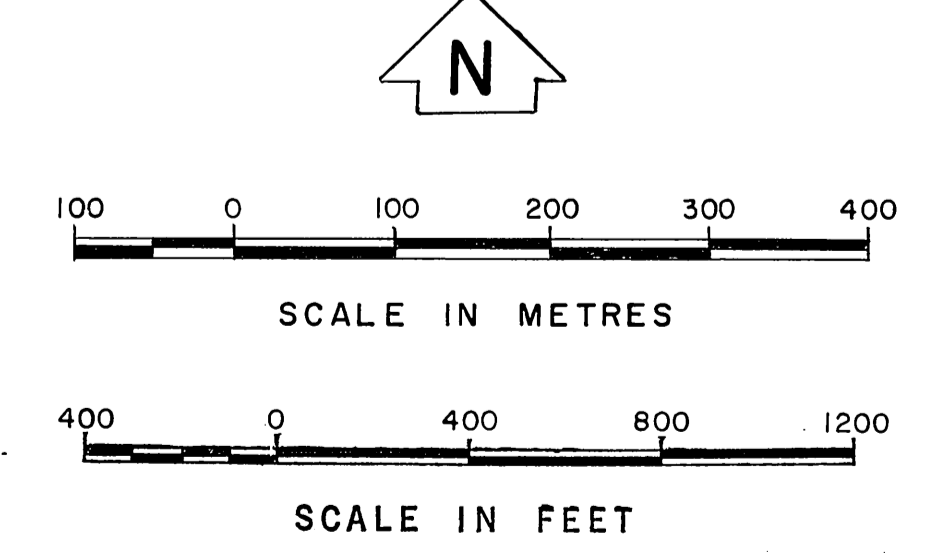
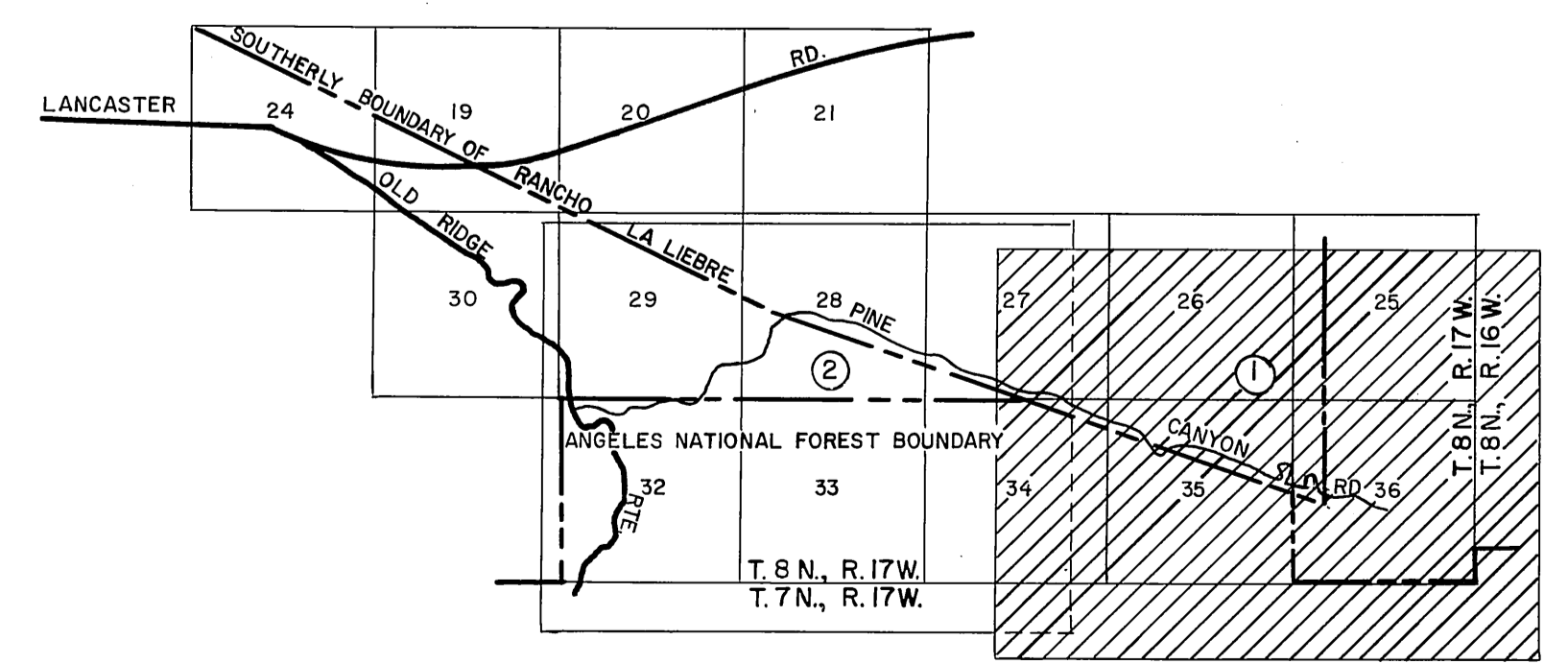
1/4 SECTION CORNER
Found monument marked
flush with surface. See F.B.
652-35, 41, 101.
F.B. 4137-207.

Set 1" iron pipe concrete plug
and brass tag marked "L.A."
CO. ENGR. 1' above surface.
F.B. 4137-209.

TOWNSHIP CORNER
Found monument marked
See F.B. 503-121, F.B. 652-42,
43 and C.S.B-1709.
F.B. 4137-209.

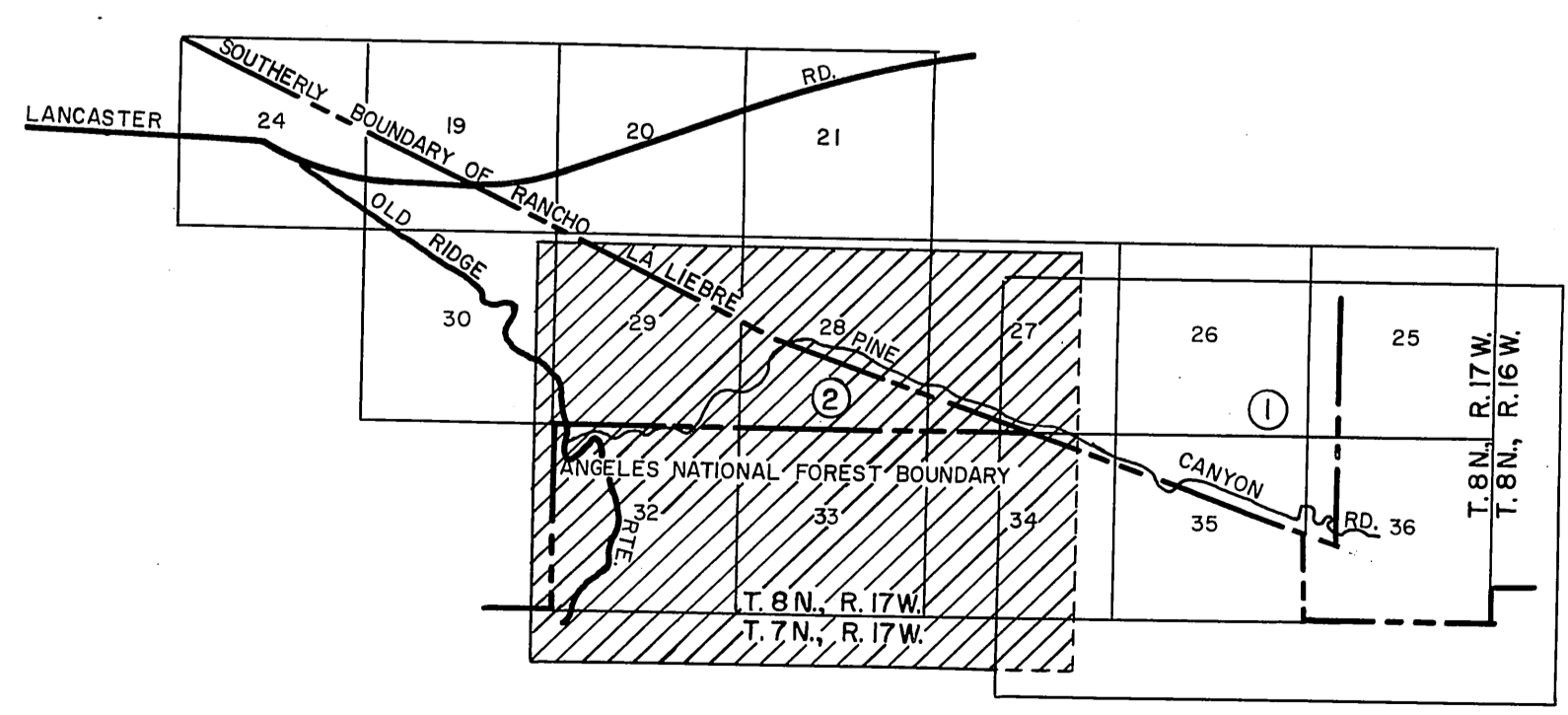
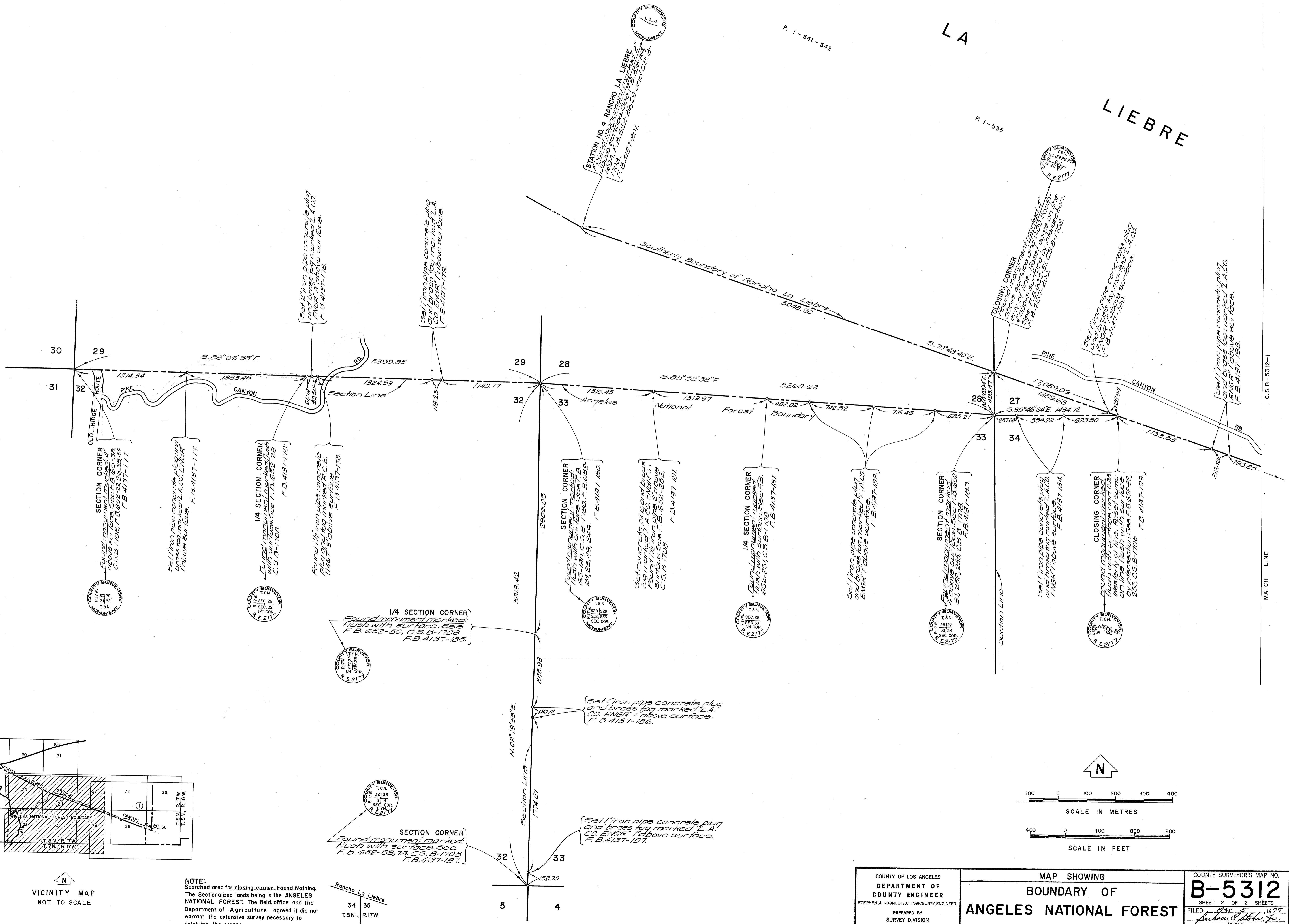
TOWNSHIP CORNER
Found monument marked
flush with surface. See F.B.
503-136, F.B. 652-42 and C.S.B-
1709.
F.B. 4137-209.

NOTE:
Searched area for closing corner, Found Nothing.
The Sectionalized lands being in the ANGELES
NATIONAL FOREST. The field, office and the
Department of Agriculture agreed it did not
warrant the extensive survey necessary to
establish the corner.



COUNTY OF LOS ANGELES DEPARTMENT OF COUNTY ENGINEER <small>STERREN J. KOONCE-ACTING COUNTY ENGINEER PREPARED BY SURVEY DIVISION RICHARD J. MITCHELL - DIVISION ENGINEER SURVEYED BY W. J. VOSE, H.C. HUBBARD CHECKED BY R. BARTHOLOMEW DRAWN BY B. GOINS</small>	MAP SHOWING BOUNDARY OF ANGELES NATIONAL FOREST IN T. 8 N., R. 17 W., S.B.M.		COUNTY SURVEYOR'S MAP NO. B-5312 SHEET 1 OF 2 SHEETS FILED: MAY 3 1977 <i>Richard J. Mitchell</i> SURVEYED JUNE, JULY 1976 REFERENCE F. B. 4137	REVISION NO. BY DATE
	BASIS OF BEARINGS CALIFORNIA COORDINATE SYSTEM ZONE 7		JOB NUMBER 0302.01	INDEX MAP NO. 17
			SURVEYED JUNE, JULY 1976	
			REFERENCE F. B. 4137	
			SHEET 1 OF 2 SHEETS	

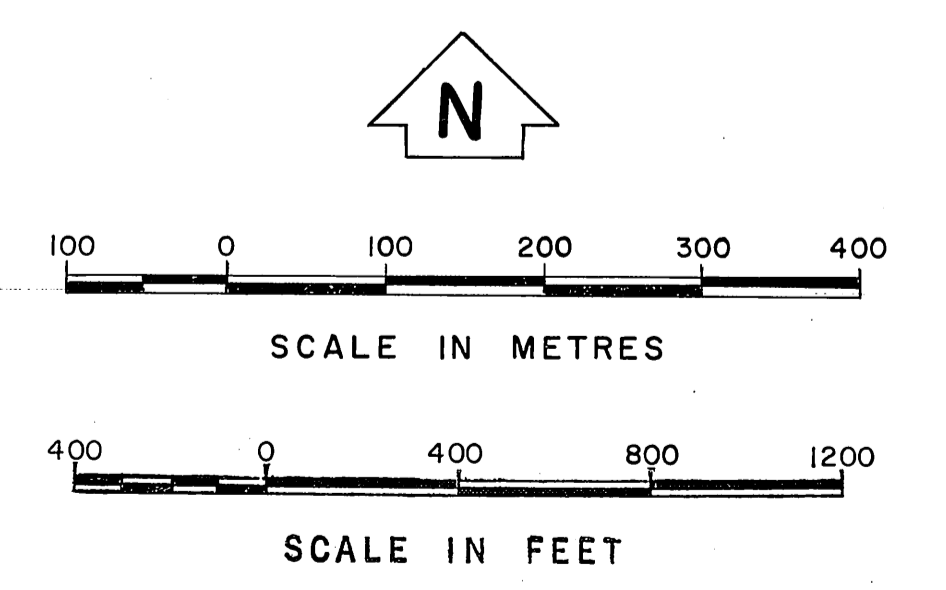
RANCHO LA LIEBRE



VICINITY MAP NOT TO SCALE

NOTE:
Searched area for closing corner. Found Nothing. The Sectionalized lands being in the ANGELES NATIONAL FOREST, The field, office and the Department of Agriculture agreed it did not warrant the extensive survey necessary to establish the corner.

Rancho La Liebre
34 35
T.8N., R.17W.



COUNTY OF LOS ANGELES DEPARTMENT OF COUNTY ENGINEER STEPHEN J. KOONCE, ACTING COUNTY ENGINEER PREPARED BY SURVEY DIVISION RICHARD J. MITCHELL, DIVISION ENGINEER SURVEYED BY <u>W.J. WOOD, H.C. HUBBARD</u> CHECKED BY <u>R. BARTHOLOMEW</u> DRAWN BY <u>B. GOINS</u>	MAP SHOWING BOUNDARY OF ANGELES NATIONAL FOREST IN T. 8 N., R. 17 W., S. B. M.	COUNTY SURVEYOR'S MAP NO. B-5312 SHEET 2 OF 2 SHEETS FILED: <u>May 5, 1977</u> <u>Richard J. Mitchell, Jr.</u> DEPUTY SURVEYED JUNE, JULY 1976 REFERENCE F.B. 4137	REVISION NO. BY DATE
	BASIS OF BEARINGS CALIFORNIA COORDINATE SYSTEM ZONE 7	JOB NUMBER 0302.01	INDEX MAP NO. 17