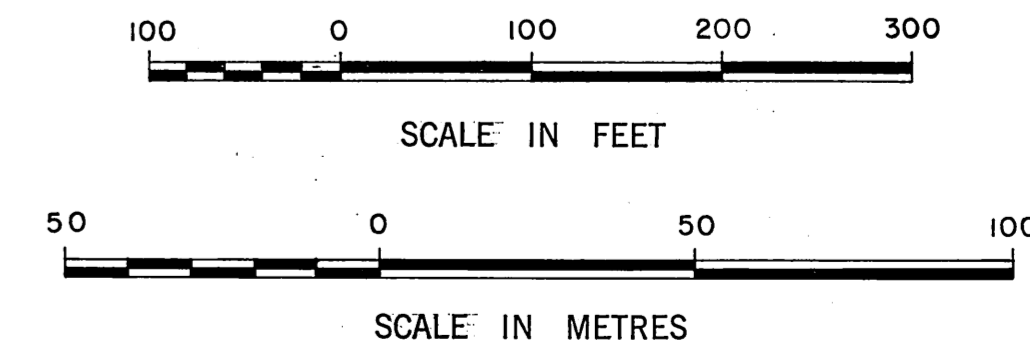
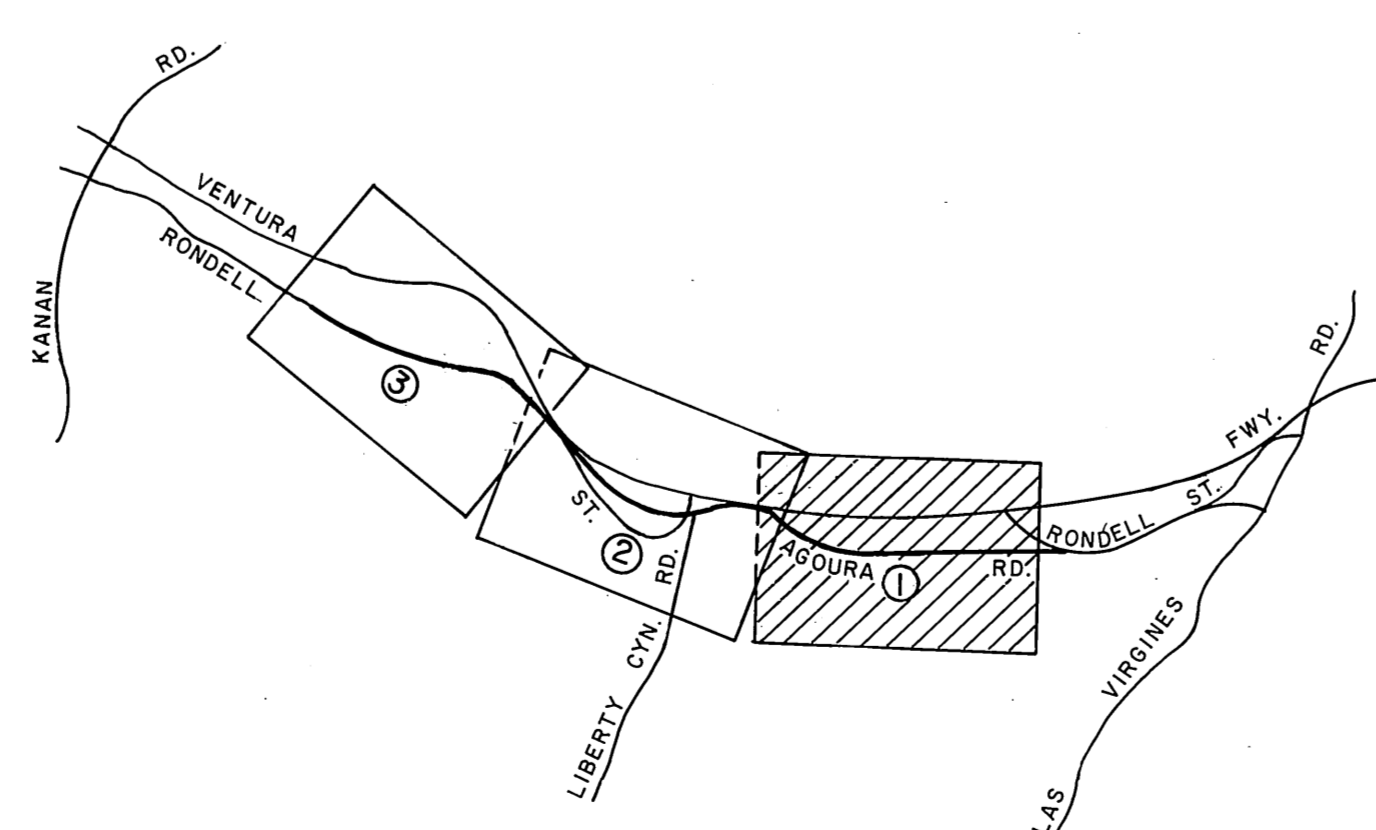
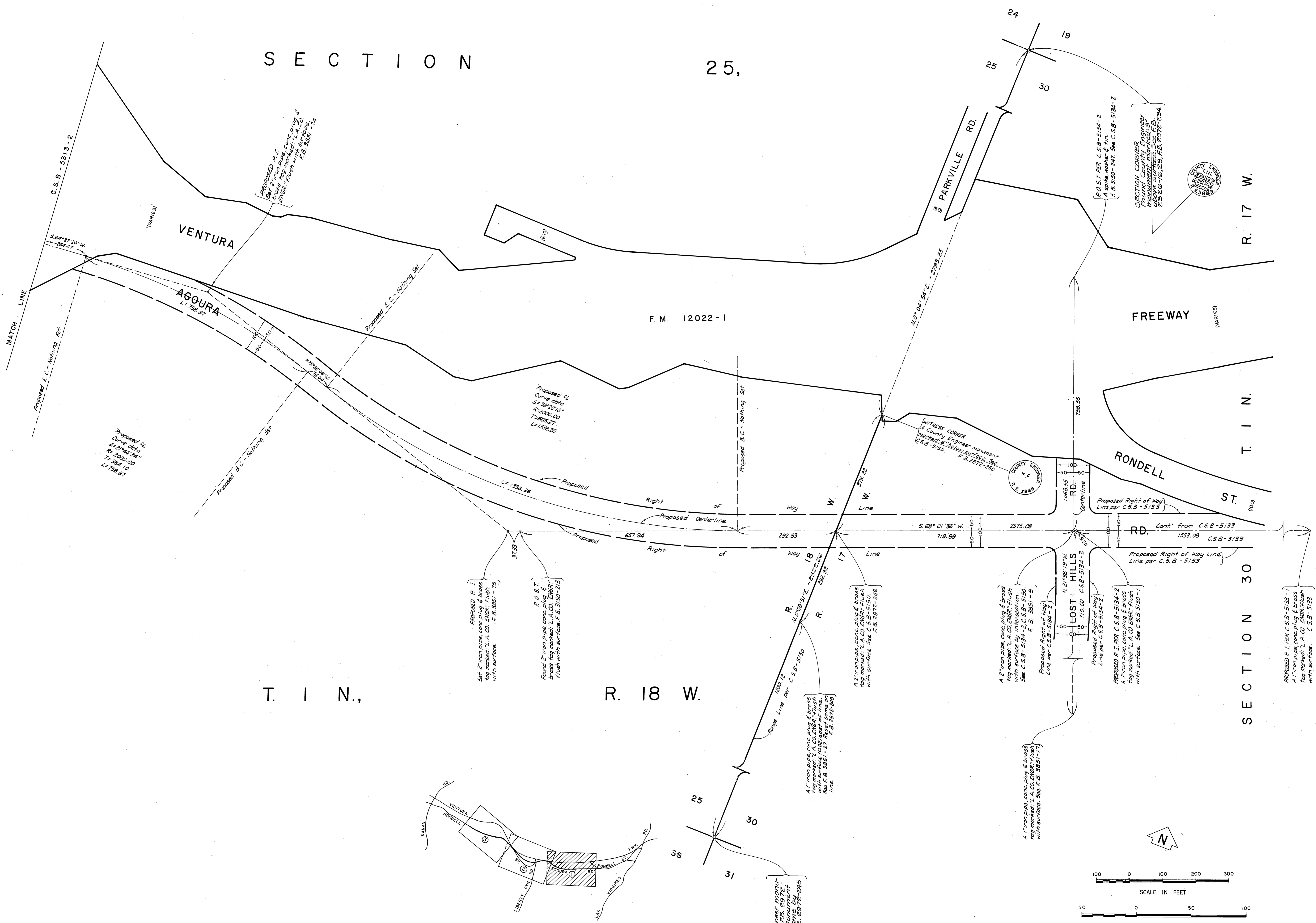
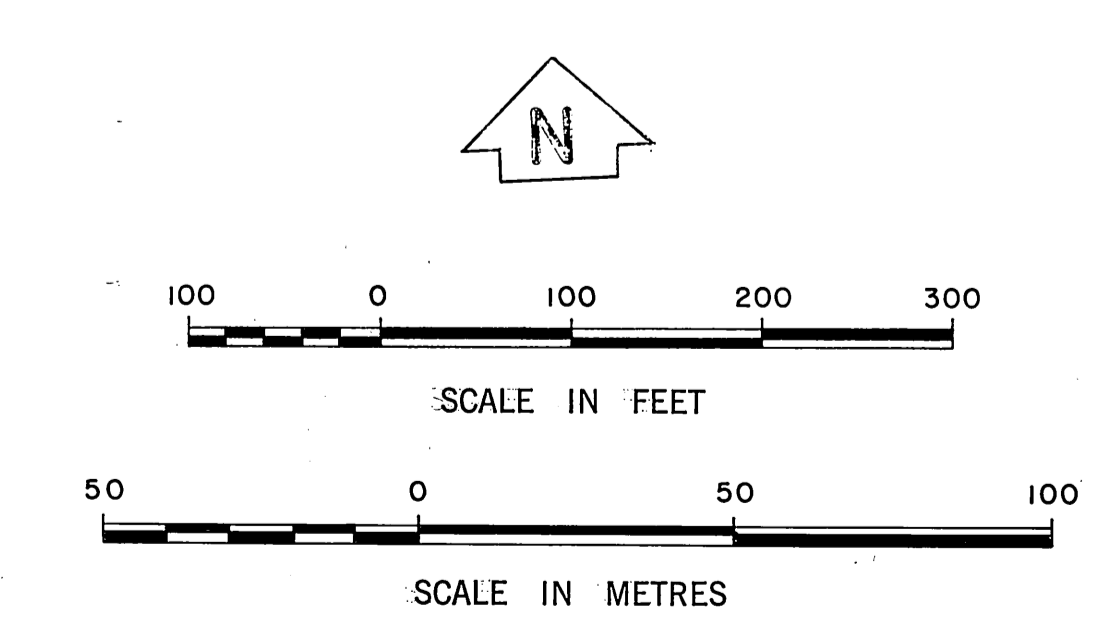
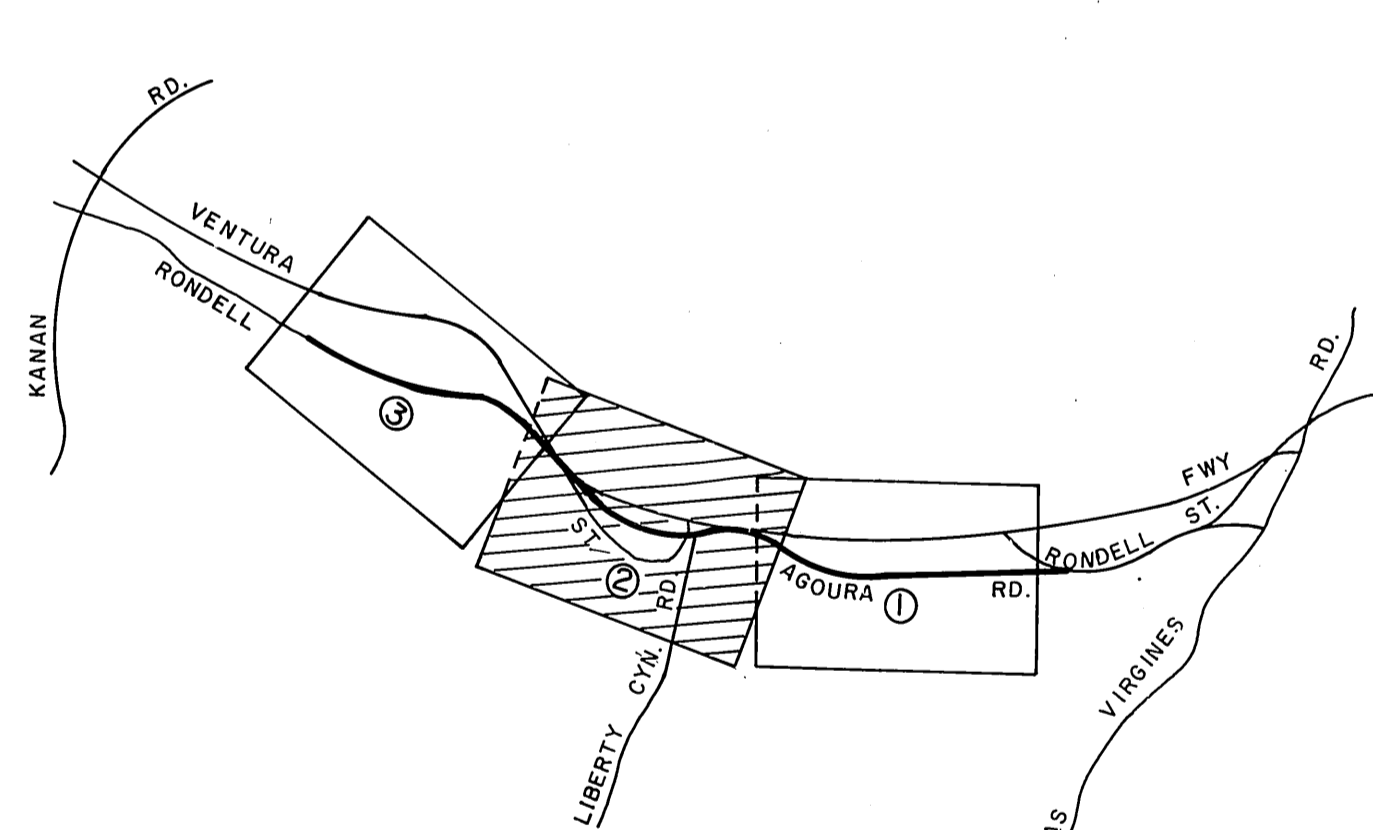
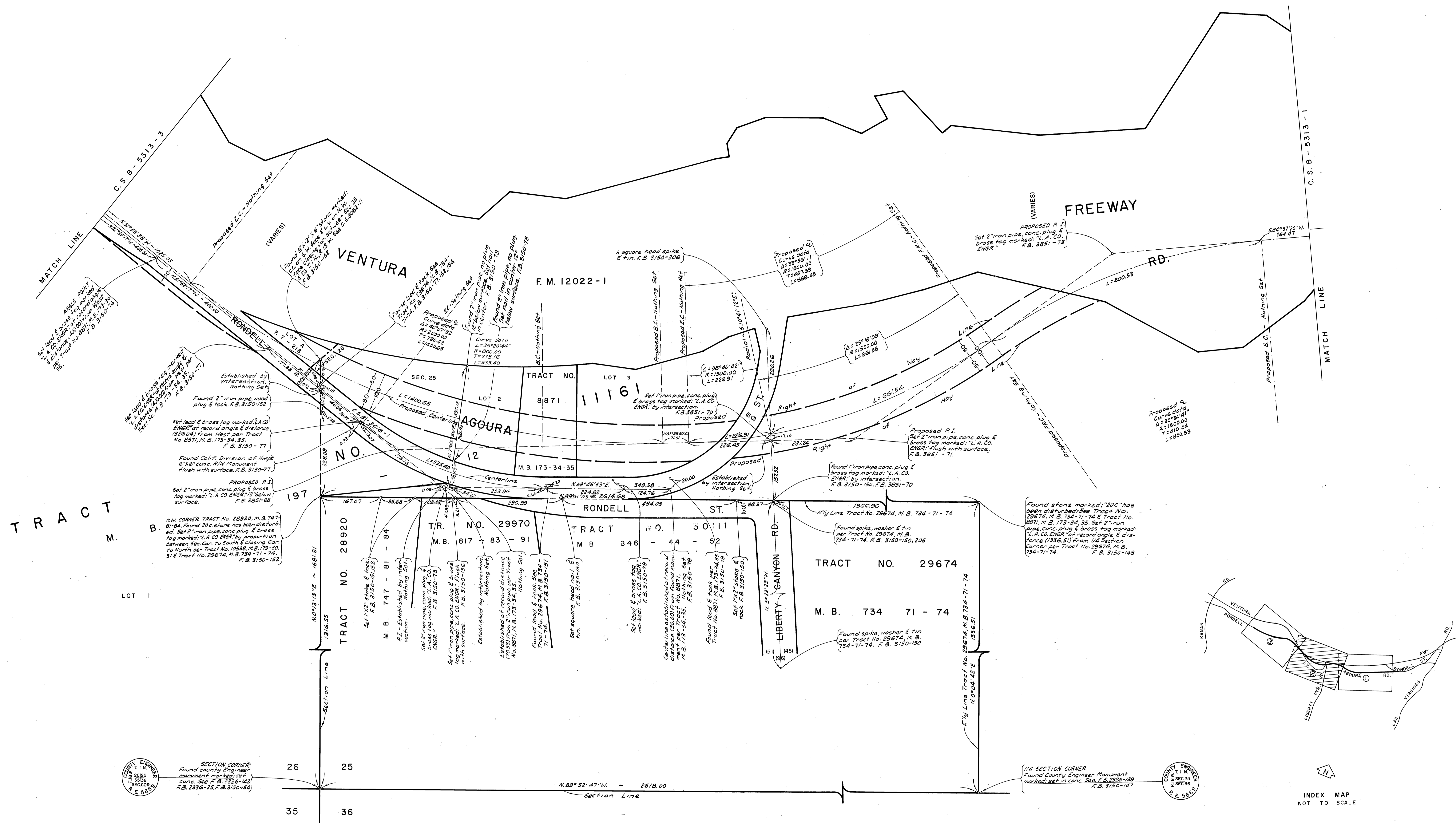


SECTION 25,

SECTION 30



COUNTY OF LOS ANGELES DEPARTMENT OF COUNTY ENGINEER STEPHEN J. KOONCE - ACTING COUNTY ENGINEER PREPARED BY SURVEY DIVISION RICHARD J. MITCHELL - DIVISION ENGINEER SURVEYED BY R. C. DALE CHECKED BY F. MUNOZ DRAWN BY J. ALFRED	ALIGNMENT MAP OF <b>AGOURA ROAD</b> FROM <b>LOST HILLS ROAD</b> TO <b>CHESEWICK ROAD</b>		COUNTY SURVEYOR'S MAP NO. <b>B-5313</b>	REVISION NO. BY DATE	
	BASIS OF BEARINGS THE CENTERLINE OF AGOURA ROAD (S.68° 01' 36" W.) AS SHOWN ON C.S.B. 5133.		SHEET 1 OF 3 SHEETS FILED: <i>F. Munoz</i> 6/19/25 <i>Richard J. Mitchell</i> SURVEY	SURVEYED MARCH 1966 - APRIL 1976	
			REFERENCE F. B. 3150 - F. B. 3851	JOB NUMBER 0095.88	INDEX MAP NO. 159-057



SEE C.S.B. 5395

COUNTY OF LOS ANGELES DEPARTMENT OF COUNTY ENGINEER STEPHEN J. KODNICE - ACTING COUNTY ENGINEER PREPARED BY SURVEY DIVISION RICHARD J. MITCHELL - DIVISION ENGINEER SURVEYED BY R. C. DALE CHECKED BY F. MUNOZ DRAWN BY J. ALFRED	ALIGNMENT MAP OF <b>AGOURA ROAD</b> FROM <b>LOST HILLS ROAD</b> TO <b>CHESEBRO ROAD</b>		COUNTY SURVEYOR'S MAP NO. <b>B-5313</b> SHEET 2 OF 3 SHEETS FILED: <i>February 19, 1976</i> <i>Richard J. Mitchell, Sr.</i> DEPUTY SURVEYED MARCH 1965 - APRIL 1976 REFERENCE F. B. 3150 - F. B. 3851 JOB NUMBER 0095.88 INDEX MAP NO. 159-057	REVISION NO. BY DATE
	BASIS OF BEARINGS THE CENTERLINE OF AGOURA ROAD (S.68° 01' 36" W) AS SHOWN ON C. S. B. - 5133.			

