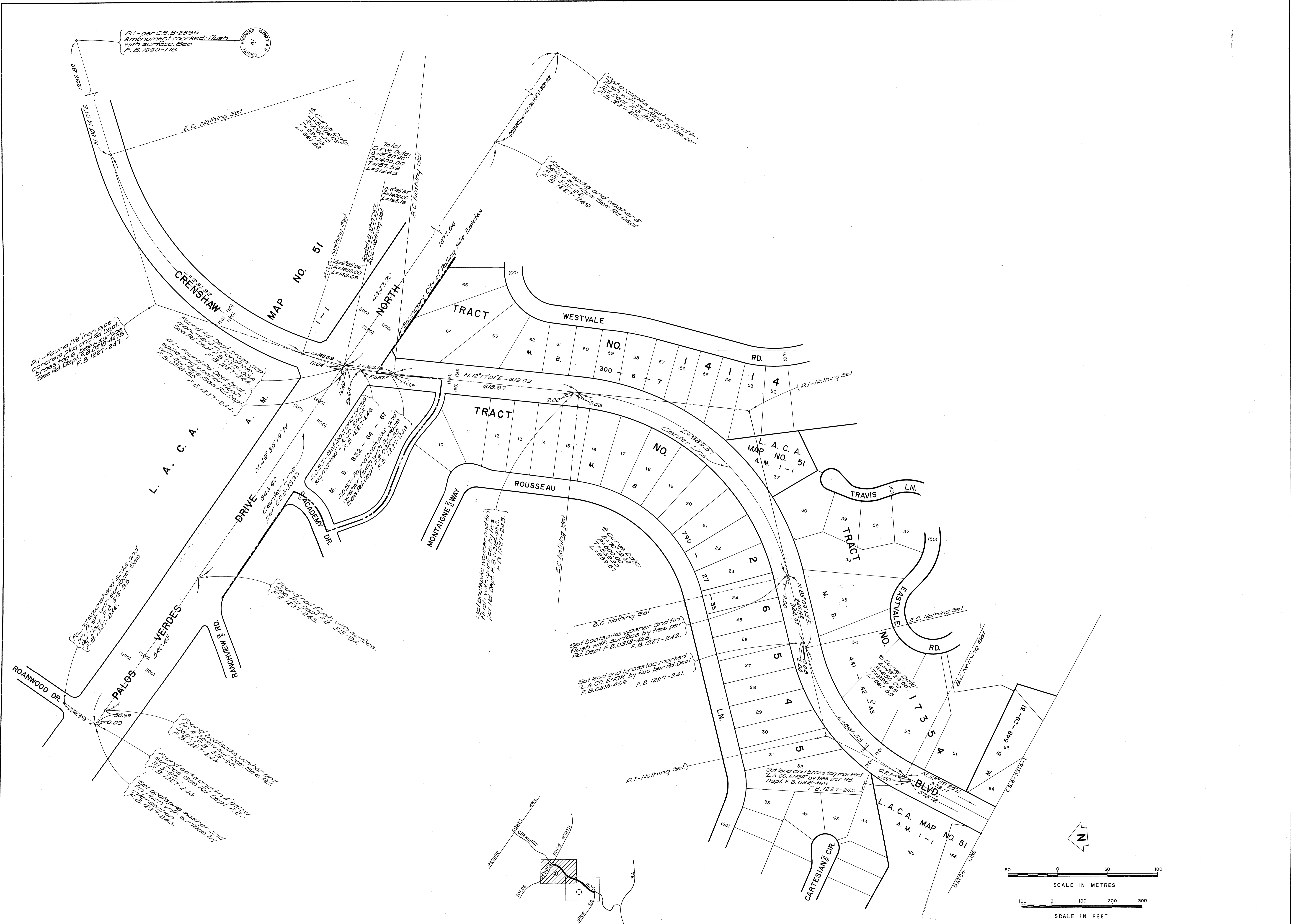


COUNTY OF LOS ANGELES DEPARTMENT OF COUNTY ENGINEER STEPHEN J. KOONCE—ACTING COUNTY ENGINEER PREPARED BY SURVEY DIVISION GEORGE J. FRANCISCHINI—DIVISION ENGINEER SURVEYED BY <u>E. F. ENGLISH</u> CHECKED BY <u>C. ADAMS—T. ABE</u> DRAWN BY <u>B. GOINS</u>	ALIGNMENT MAP OF CRENSHAW BOULEVARD FROM SILVER SPUR RD. TO PALOS VERDES DRIVE NORTH BASIS OF BEARINGS THE CENTERLINE OF PALOS VERDES DRIVE NORTH (N. 49° 35' 19" W.) AS SHOWN ON C.S.B.—2895.	COUNTY SURVEYOR'S MAP NO. B-5314	SHEET OF 2 SHEETS NO. BY DATE
		FILED: <u>1974</u> <u>Palos Verdes</u> DEPUTY SURVEYED SEPTEMBER 1974 REFERENCE F.B. 1227	JOB NUMBER 0097.32



INDEX MAP NOT TO SCALE

COUNTY OF LOS ANGELES DEPARTMENT OF COUNTY ENGINEER STEPHEN J. KOONCE - ACTING COUNTY ENGINEER PREPARED BY SURVEY DIVISION RICHARD J. MITCHELL - DIVISION ENGINEER SURVEYED BY - E.F. ENGLISH CHECKED BY - C. ADAMS - T.A.B. DRAWN BY - B. GOINS	ALIGNMENT MAP OF CRENSHAW BOULEVARD FROM SILVER SPUR RD. TO PALOS VERDES DRIVE NORTH BASIS OF BEARINGS THE CENTERLINE OF PALOS VERDES DRIVE NORTH (N. 49° 35' 19" W.) AS SHOWN ON C.S.B-2895.		COUNTY SURVEYOR'S MAP NO. B-5314 SHEET 2 OF 2 SHEETS FILED: <i>M.B.</i> 19 27 <i>Richard J. Mitchell</i> DEPUTY SURVEYED SEPTEMBER 1974 REFERENCE F.B. 1227 JOB NUMBER 0097.32	REVISION NO. BY DATE INDEX MAP NO. 27
---	---	--	--	--