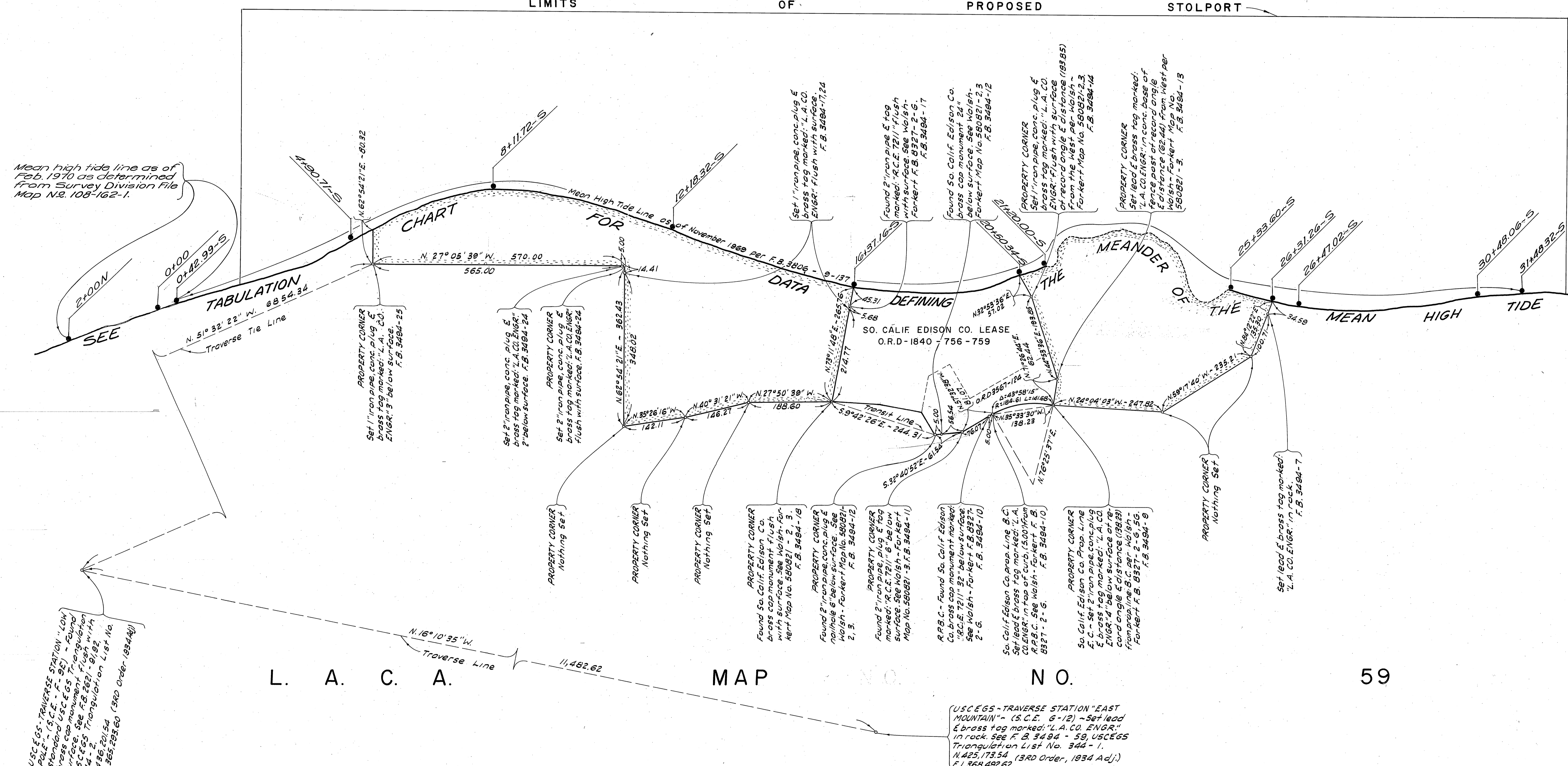


TABULATION CHART OF MEANDER LINE DEFINING APPROXIMATE MEAN HIGH TIDE LINE AS SHOWN BELOW.

STATIONS	COURSE	
	DISTANCE	BEARING
2+00-N	50.95	S.57°54'16"E
1+50-N	52.35	S.43°27'07"E
1+00-N	51.41	S.40°39'42"E
0+50-N	52.03	S.42°16'25"E
0+00	42.11	S.42°35'39"E
0+42.99-S	104.49	S.43°19'42"E
1+54.92-S	209.57	S.45°51'07"E
3+78.78-S	116.25	S.57°06'36"E
4+90.71-S	114.75	S.55°51'15"E
6+02.64-S	107.70	S.48°16'58"E
7+11.56-S	102.48	S.39°07'12"E
8+11.72-S	100.07	S.24°25'56"E
9+11.88-S	101.06	S.18°17'17"E
10+12.04-S	103.45	S.11°39'22"E
11+13.61-S	105.01	S.8°43'15"E
12+13.32-S	107.00	S.5°39'35"E
13+23.03-S	105.01	S.8°43'15"E
14+21.74-S	104.13	S.10°17'35"E
15+32.45-S	103.09	S.12°25'42"E
16+37.16-S	101.34	S.17°01'46"E
17+38.34-S	100.00	S.25°58'21"E
18+38.34-S	100.00	S.30°05'59"E
19+41.74-S	97.09	S.46°22'25"E
20+36.15-S	12.35	S.42°26'01"E
20+50.34-S	74.53	S.42°26'01"E
21+20.00-S		
25+33.60-S	100.32	S.11°32'31"E
26+31.26-S	16.68	S.11°32'31"E
26+47.02-S	100.69	S.19°47'04"E
27+47.28-S	100.00	S.26°03'20"E
28+47.54-S	100.00	S.26°03'20"E
29+47.80-S	100.47	S.32°03'15"E
30+48.06-S	102.12	S.36°12'32"E
31+48.32-S	100.74	S.33°28'11"E

PACIFIC OCEAN

LIMITS OF PROPOSED STOLPORT



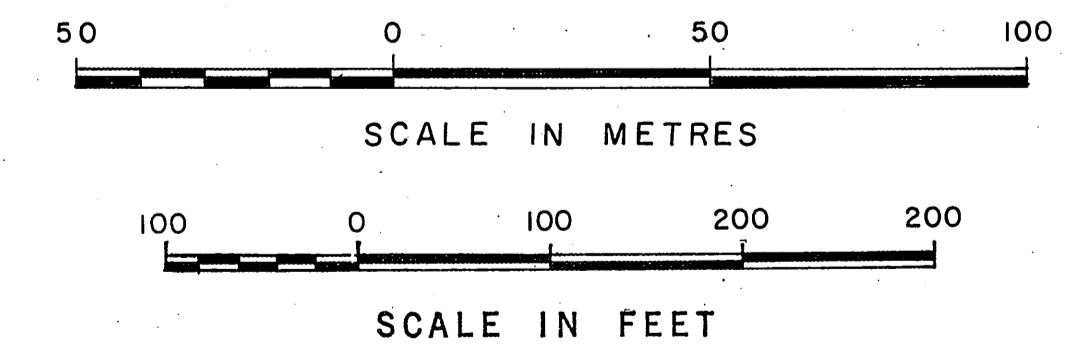
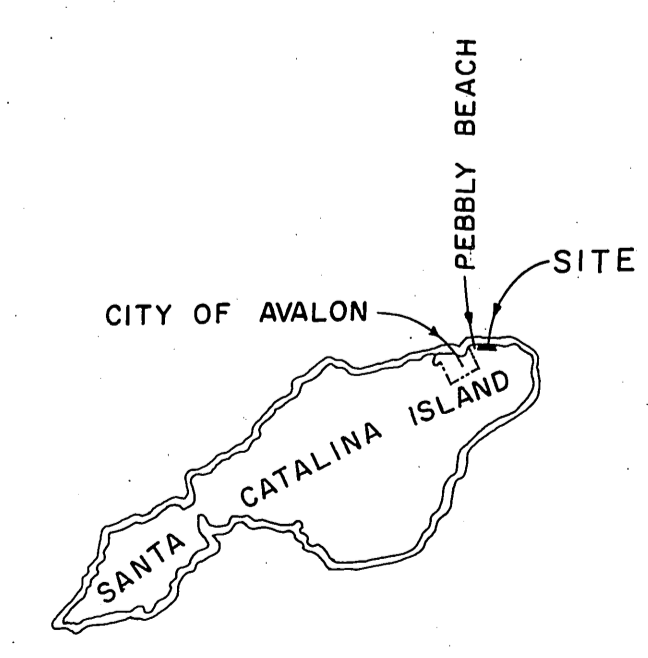
Mean high tide line as of Feb. 1970 as determined from Survey Division File Map No. 106-162-1.

USCEGS TRAVERSE STATION "LOW MOUNTAIN" IS C.C. S-12. Found brass cap monument flush with surface. See F.B. 3494-59, USCEGS Triangulation List No. 344-1, N. 42° 51' 54" E, 11,368.295.60 (3RD Order, 1934 Adj.)

USCEGS - TRAVERSE STATION "EAST MOUNTAIN" IS C.C. S-12. Set lead & brass tag marked: "L.A. CO. ENGR." in rock. See F.B. 3494-59, USCEGS Triangulation List No. 344-1, N. 42° 51' 54" E, 11,368.295.60 (3RD Order, 1934 Adj.)

L. A. C. A. MAP NO. 59

A. M. I - 7



REVISION: ① Tabulation of Data defining the meander of the mean high tide line.

COUNTY OF LOS ANGELES DEPARTMENT OF COUNTY ENGINEER-FACILITIES STEPHEN J. KOONCE, COUNTY ENGINEER	BOUNDARY MAP OF		COUNTY SURVEYOR'S MAP NO. B-5338	NO.	REVISION
	AVALON STOLPORT (PEBBLY BEACH, SANTA CATALINA)			BY	DATE
PREPARED BY SURVEY DIVISION C. E. BRUNTY-DIVISION ENGINEER	FILED: MAY 2 1978		DEPUTY SURVEYOR AUGUST, 1969		
SURVEYED BY W. RICHARDS	DRAWN BY J. ALFRED		REFERENCE F.B. 3494		
CHECKED BY D. SAPPPELL	BASIS OF BEARINGS CALIFORNIA COORDINATE SYSTEM ZONE 6		JOB NUMBER 0023.03		
			INDEX MAP NO. 29		

5/5/88: Not indicated in Quad sheet book.