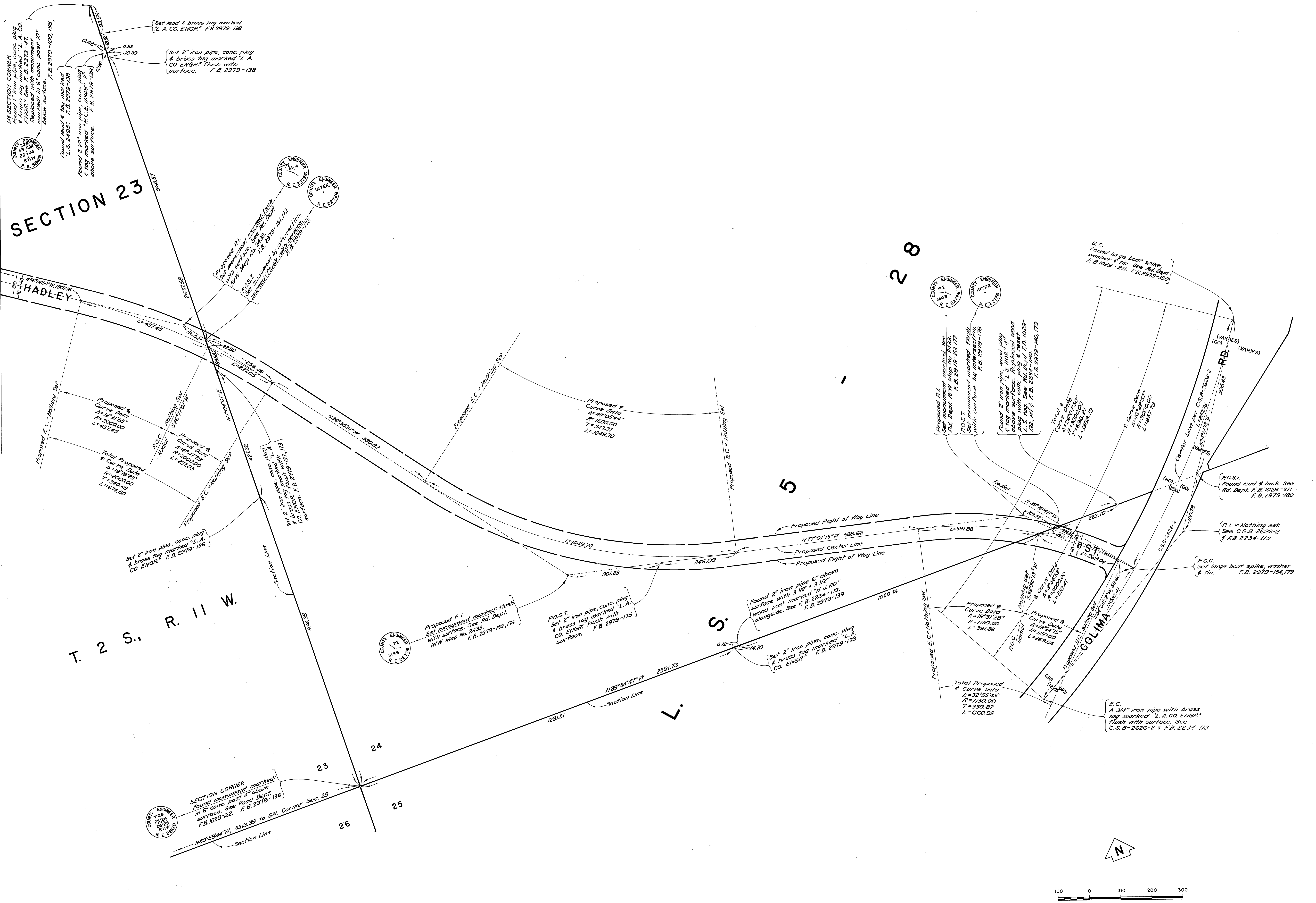


C 2 B - 2 3 4 0 - 1

C.S.B-5340-2

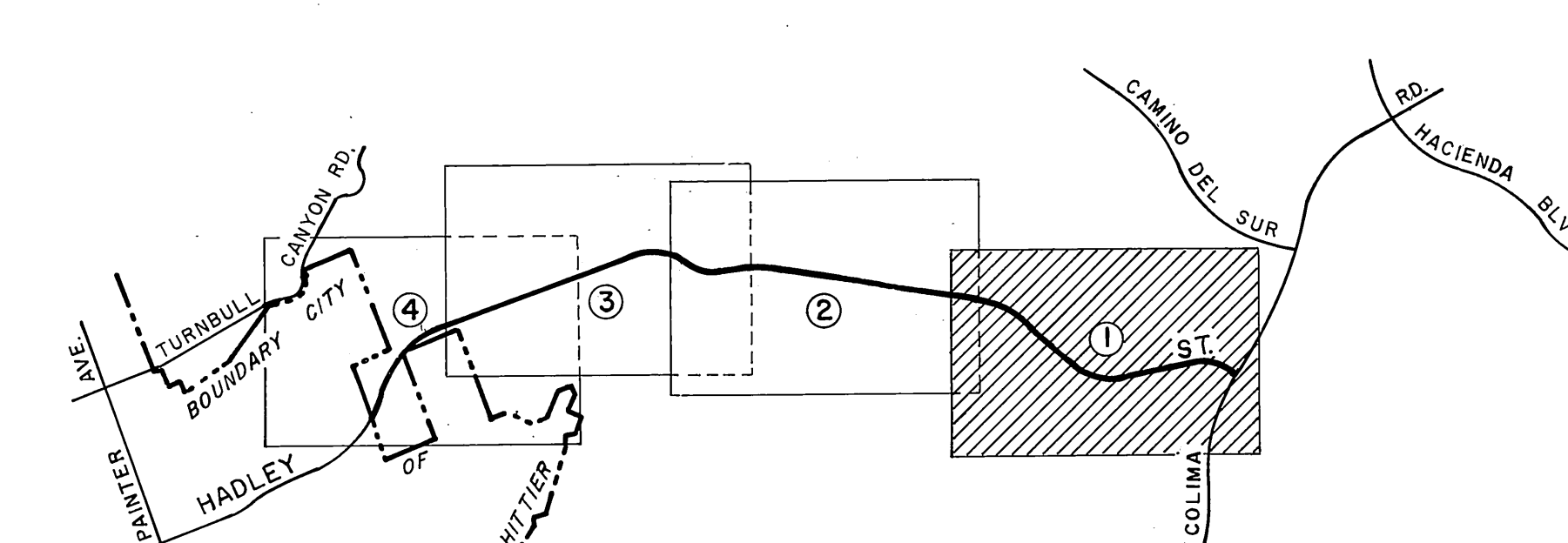
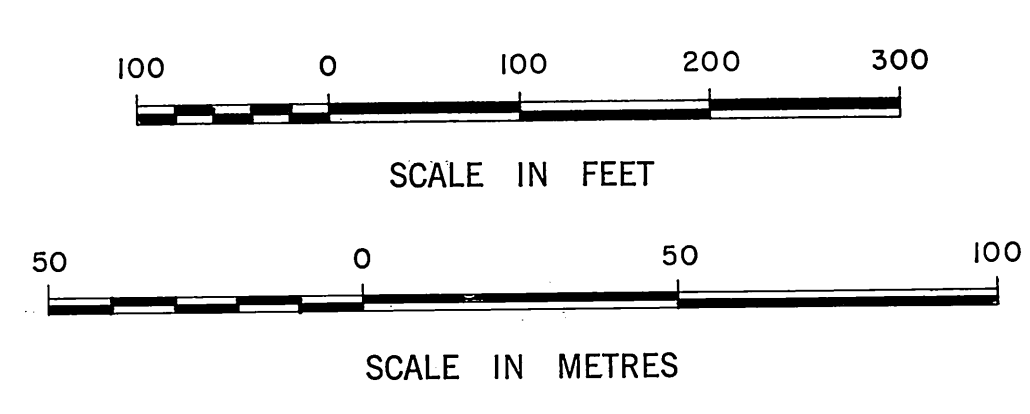
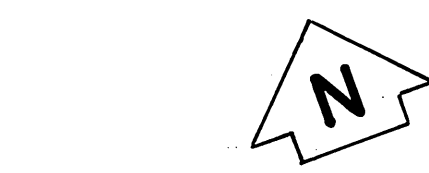
MATCH LINE



T. 2 S. R. 11 W.

SECTION 23

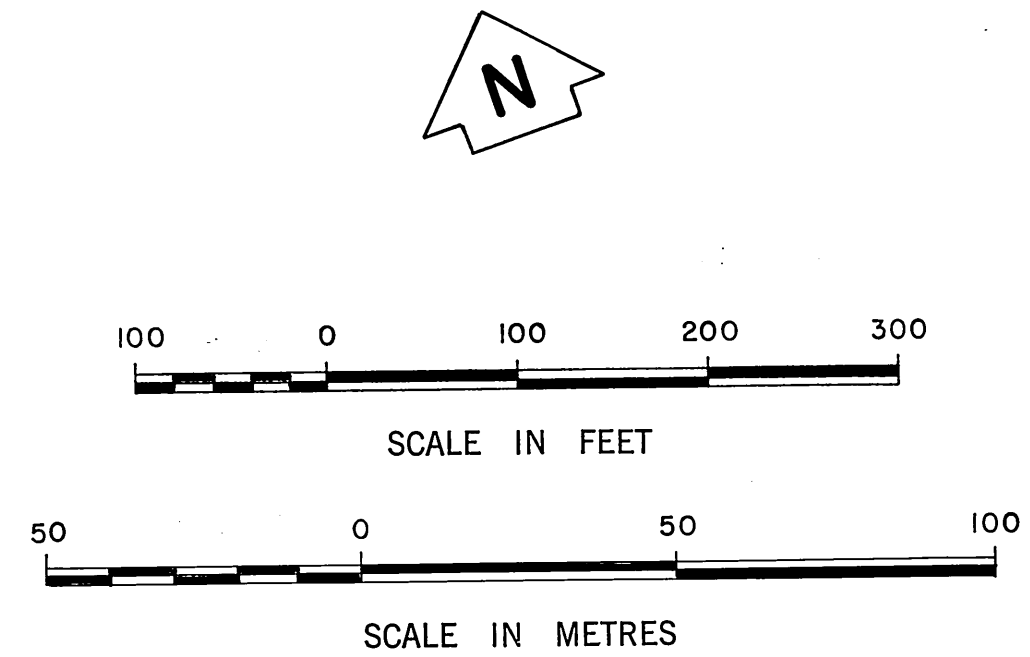
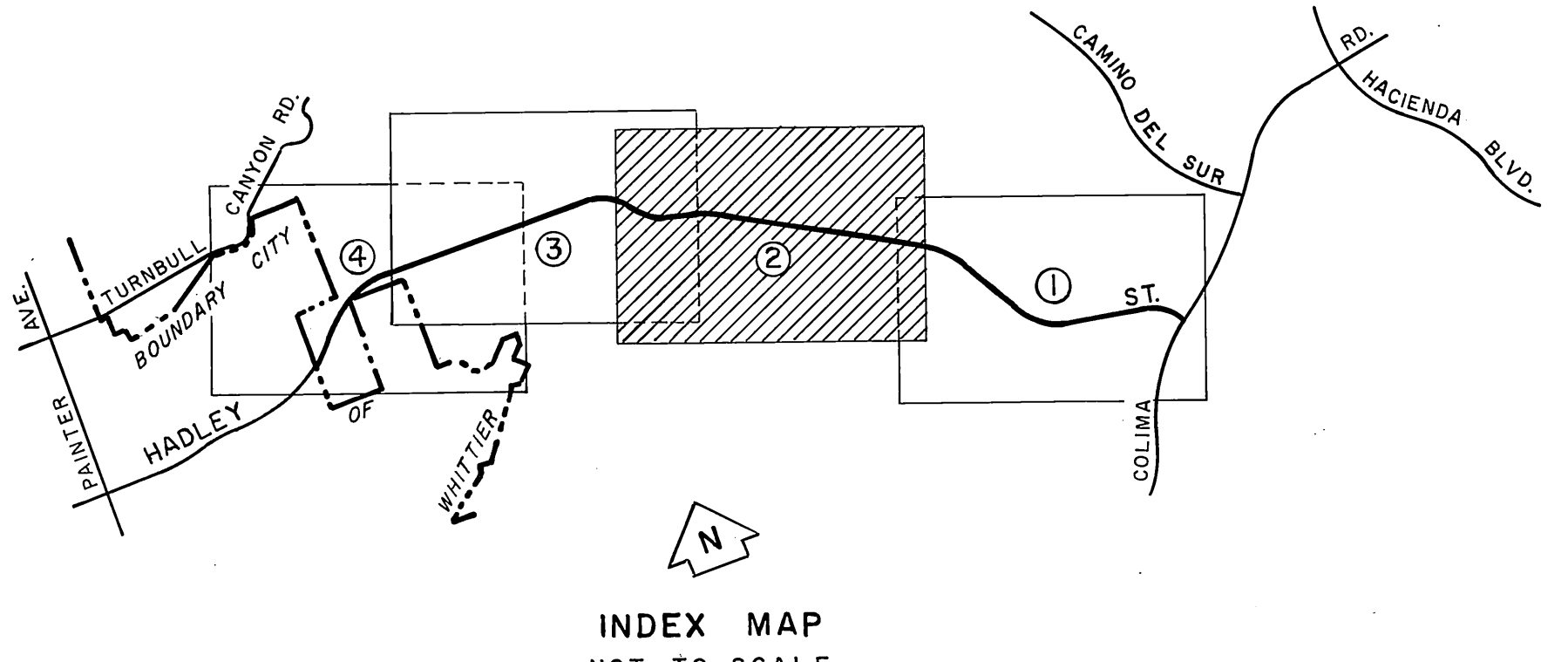
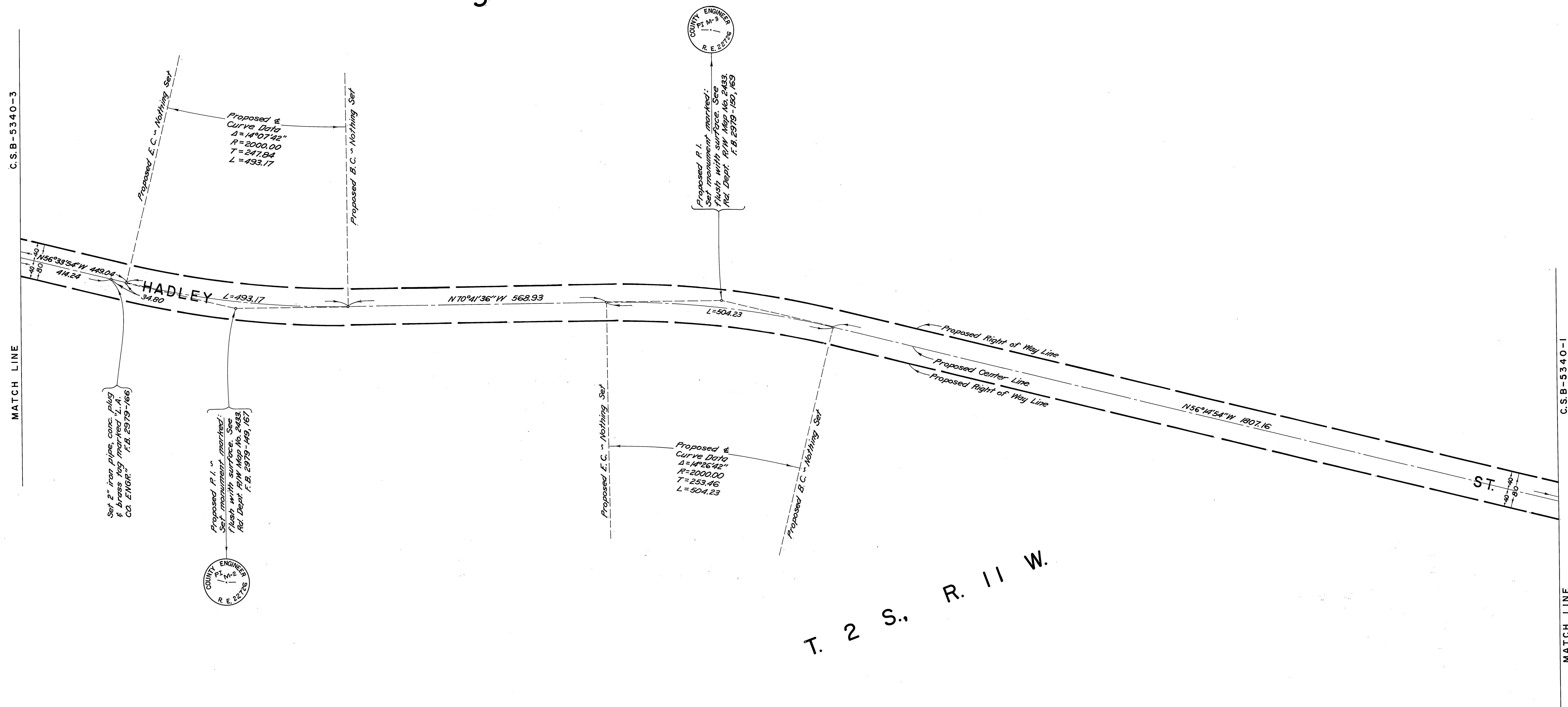
HADLEY



INDEX MAP NOT TO SCALE

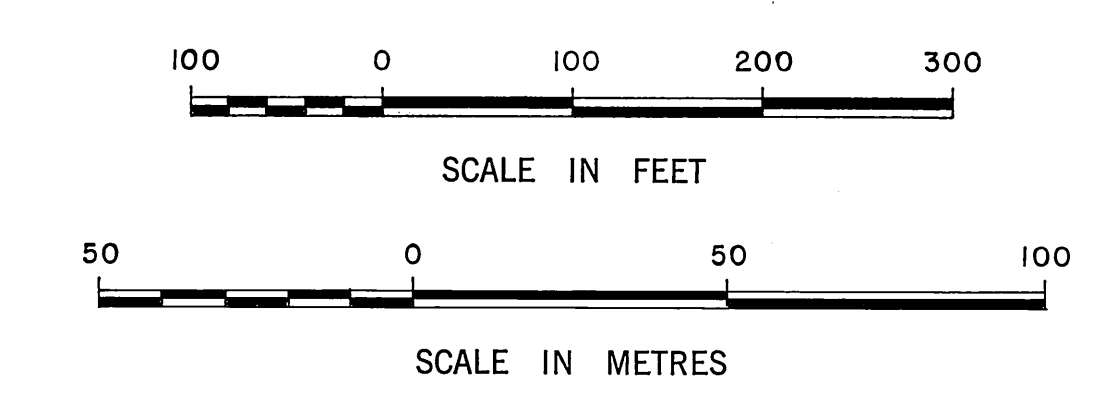
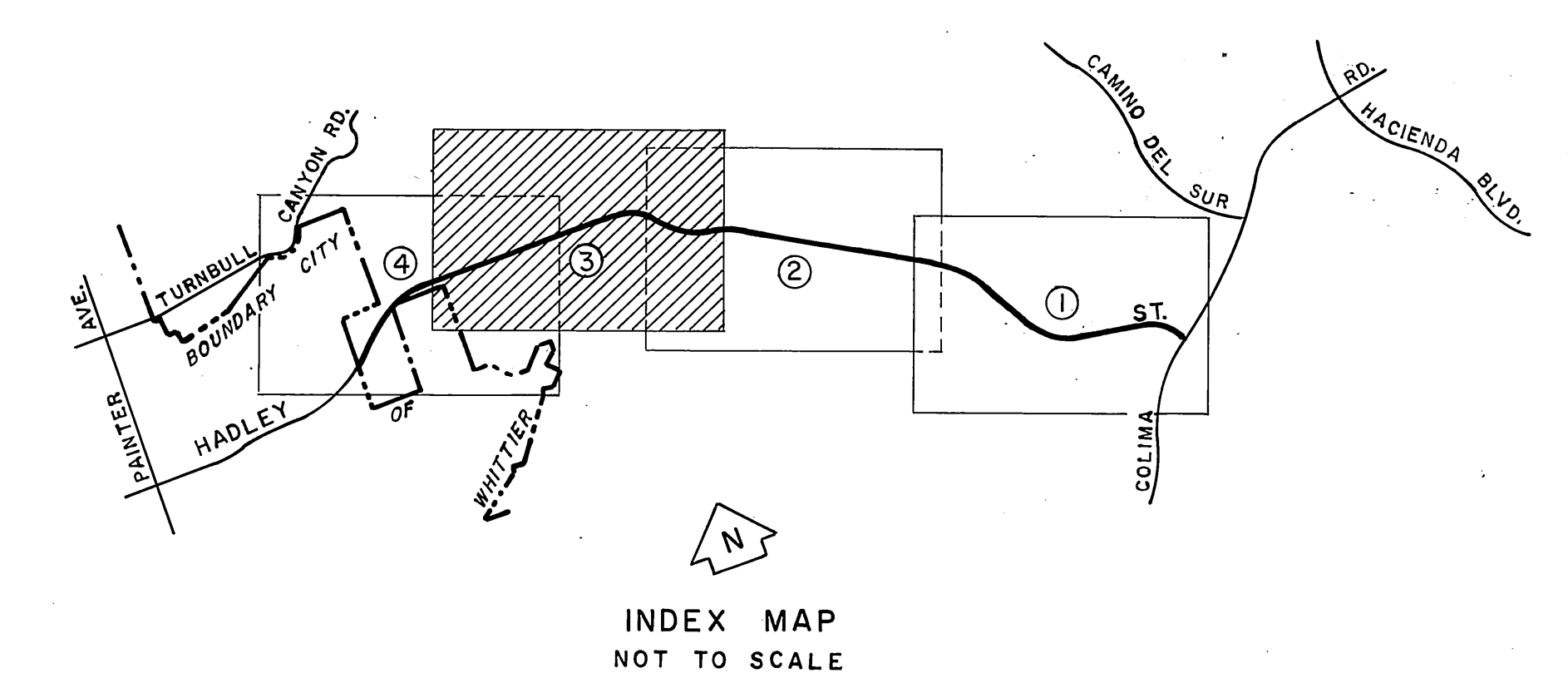
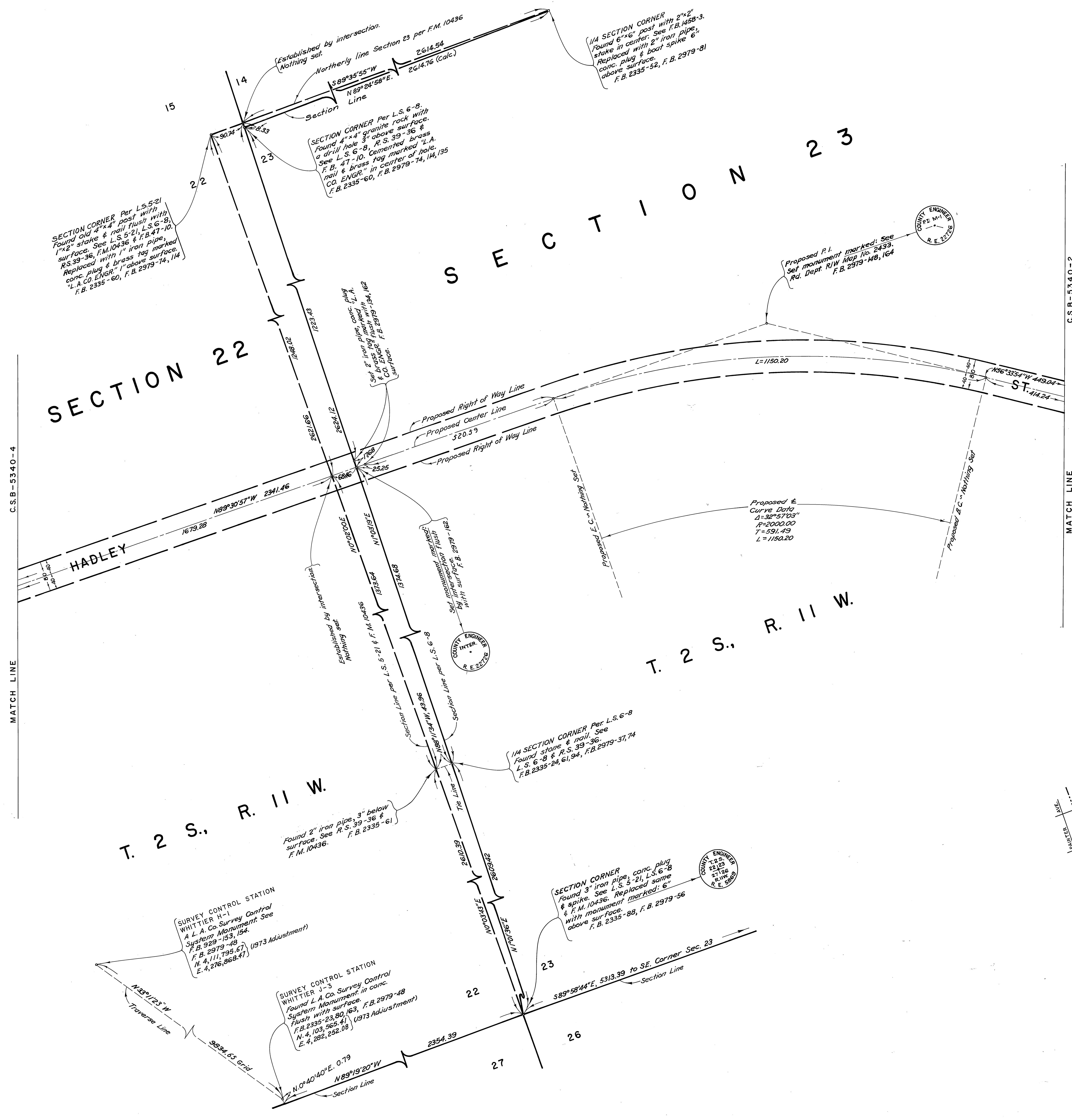
COUNTY OF LOS ANGELES DEPARTMENT OF COUNTY ENGINEER-FACILITIES STEPHEN J. KOONCE-COUNTY ENGINEER PREPARED BY SURVEY DIVISION RICHARD J. MITCHELL-DIVISION ENGINEER SURVEYED BY <u>F. F. BROOKS</u> CHECKED BY <u>T. ABE</u> DRAWN BY <u>J. F. MERRILL</u>	ALIGNMENT MAP OF <b>HADLEY STREET</b> FROM <b>COLIMA ROAD</b> TO <b>WHITTIER CITY BOUNDARY</b> BASIS OF BEARINGS CALIFORNIA COORDINATE SYSTEM, ZONE 7		COUNTY SURVEYOR'S MAP NO. <b>B-5340</b> SHEET 1 OF 4 SHEETS FILED: <u>April 14, 1977</u> DEPT. SURVEYED JANUARY 1958 - JULY 1977 REFERENCE E. B. 2335 & F. B. 2979 JOB NUMBER 0207.06 INDEX MAP NO. 099-277	REVISION NO. BY DATE

S E C T I O N 2 3



COUNTY OF LOS ANGELES DEPARTMENT OF COUNTY ENGINEER-FACILITIES STEPHEN J. KOONCE-COUNTY ENGINEER PREPARED BY SURVEY DIVISION RICHARD J. MITCHELL-DIVISION ENGINEER SURVEYED BY <u>F. E. BROOKS</u> CHECKED BY <u>T. ABE</u> DRAWN BY <u>J. F. MERRILL</u>	<b>ALIGNMENT MAP OF</b> <b>HADLEY STREET</b> FROM <b>COLIMA ROAD</b> TO <b>WHITTIER CITY BOUNDARY</b> BASIS OF BEARINGS CALIFORNIA COORDINATE SYSTEM, ZONE 7		COUNTY SURVEYOR'S MAP NO. <b>B-5340</b> SHEET 2 OF 4 SHEETS FILED: <u>1977</u> 19 22 <u>1977</u> DEPUTY SURVEYED 1959 - JULY 1977 REFERENCE F.B. 2335 & F.B. 2979 JOB NUMBER 0207.06	REVISION NO. BY DATE

C.S.B-2340-3



COUNTY OF LOS ANGELES DEPARTMENT OF COUNTY ENGINEER-FACILITIES STEPHEN J. KOONCE-COUNTY ENGINEER PREPARED BY SURVEY DIVISION RICHARD J. MITCHELL-DIVISION ENGINEER SURVEYED BY <u>F. E. BROOKS</u> CHECKED BY <u>T. ABE</u> DRAWN BY <u>J. F. MERRILL</u>	ALIGNMENT MAP OF <b>HADLEY STREET</b> FROM <b>COLIMA ROAD</b> TO <b>WHITTIER CITY BOUNDARY</b> BASIS OF BEARINGS CALIFORNIA COORDINATE SYSTEM, ZONE 7		COUNTY SURVEYOR'S MAP NO. <b>B-5340</b> SHEET 3 OF 4 SHEETS FILED: <u>August 14, 1977</u> <u>R. J. Mitchell</u> DEPUTY SURVEYOR SURVEYED JANUARY 1958 - JULY 1977 REFERENCE F.B. 2335 & F.B. 2979	REVISION NO. BY DATE
	JOB NUMBER 0207.06		INDEX MAP NO. 099 - 277	

C.S.B-2340-3



