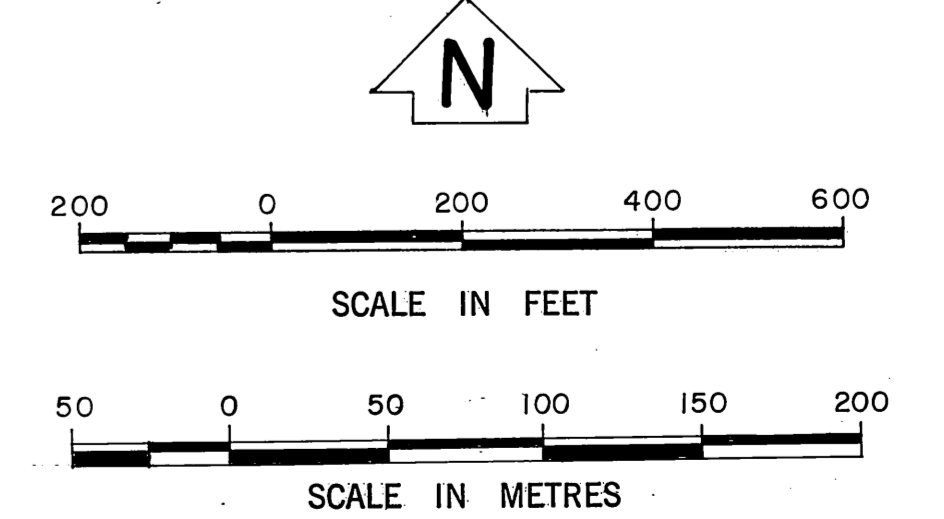
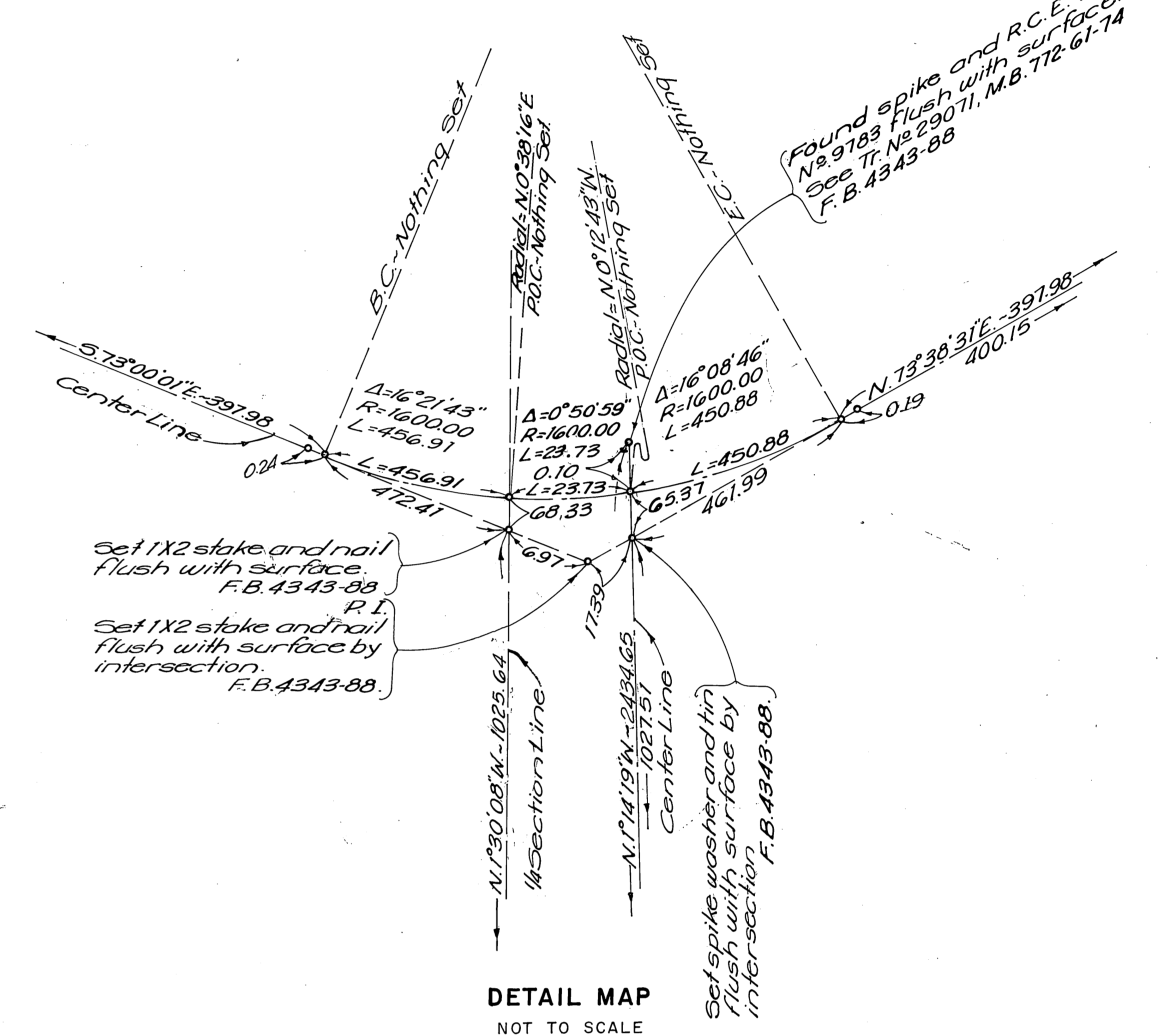
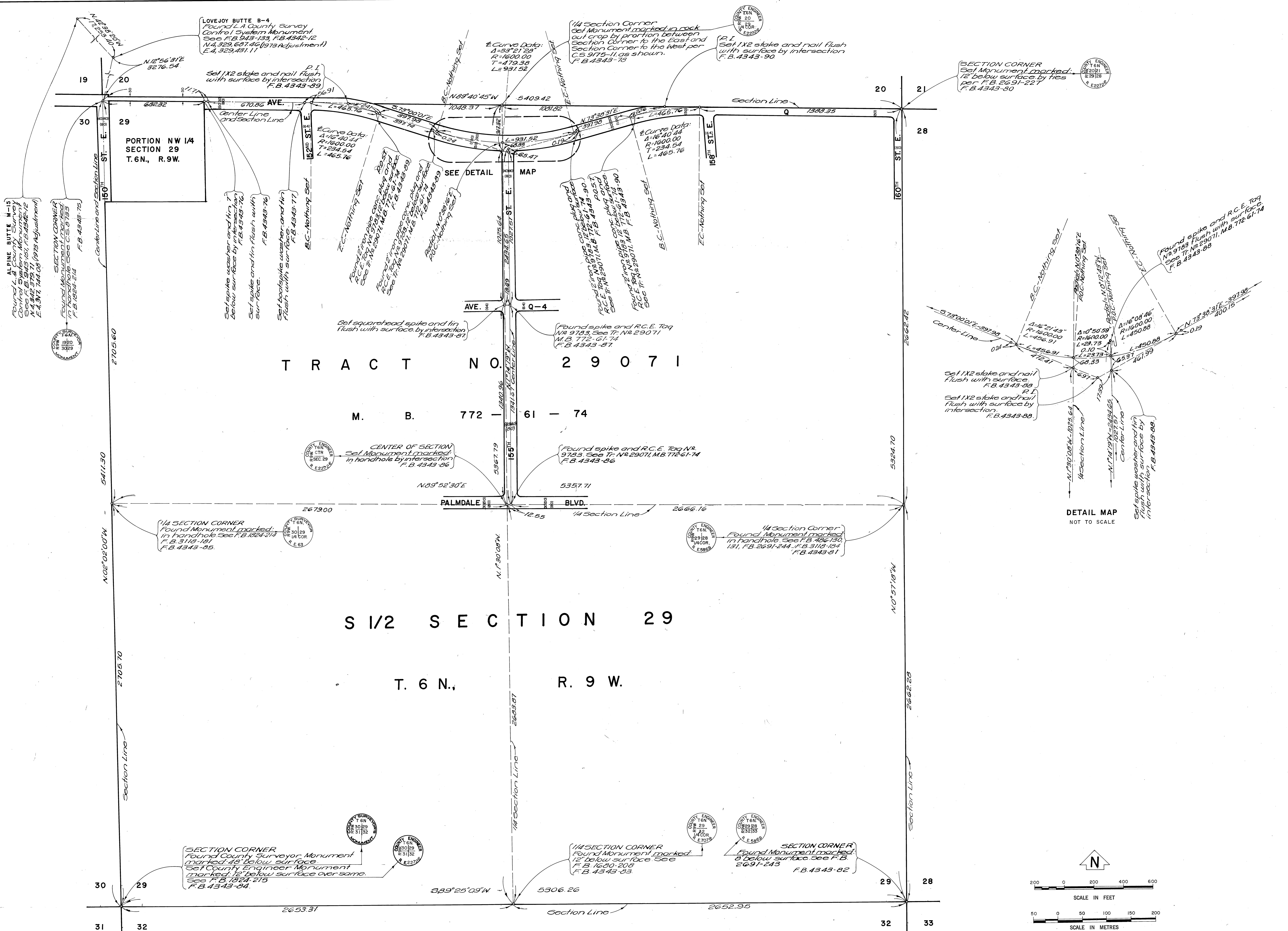


C 2 B - 23 41



NOTE:  
THIS MAP WAS FILED FOR THE PURPOSE OF  
ESTABLISHING SECTION LINES. ALL OTHER  
CADASTRAL DATA HAS BEEN OMITTED.

COUNTY OF LOS ANGELES DEPARTMENT OF COUNTY ENGINEER-FACILITIES STEPHEN J. KOONCE - COUNTY ENGINEER PREPARED BY SURVEY DIVISION RICHARD J. MITCHELL - DIVISION ENGINEER SURVEYED BY J.C. PIERCE CHECKED BY E. DUVERNAY DRAWN BY B. GOINS	MAP OF <b>SECTION 29</b> <b>T. 6 N., R. 9 W. S.B.M.</b>		COUNTY SURVEYOR'S MAP NO. <b>B-5341</b> SHEET 1 OF 1 SHEETS FILED: <i>Jan 21 1978</i> <i>W. J. Duvernay</i> DEPUTY SURVEYED JAN. 25, 1978 REFERENCE F.B. 4343	REVISION NO. BY DATE
	BASIS OF BEARINGS CALIFORNIA COORDINATE SYSTEM, ZONE 7			JOB NUMBER 0202-01
				INDEX MAP NO. .67