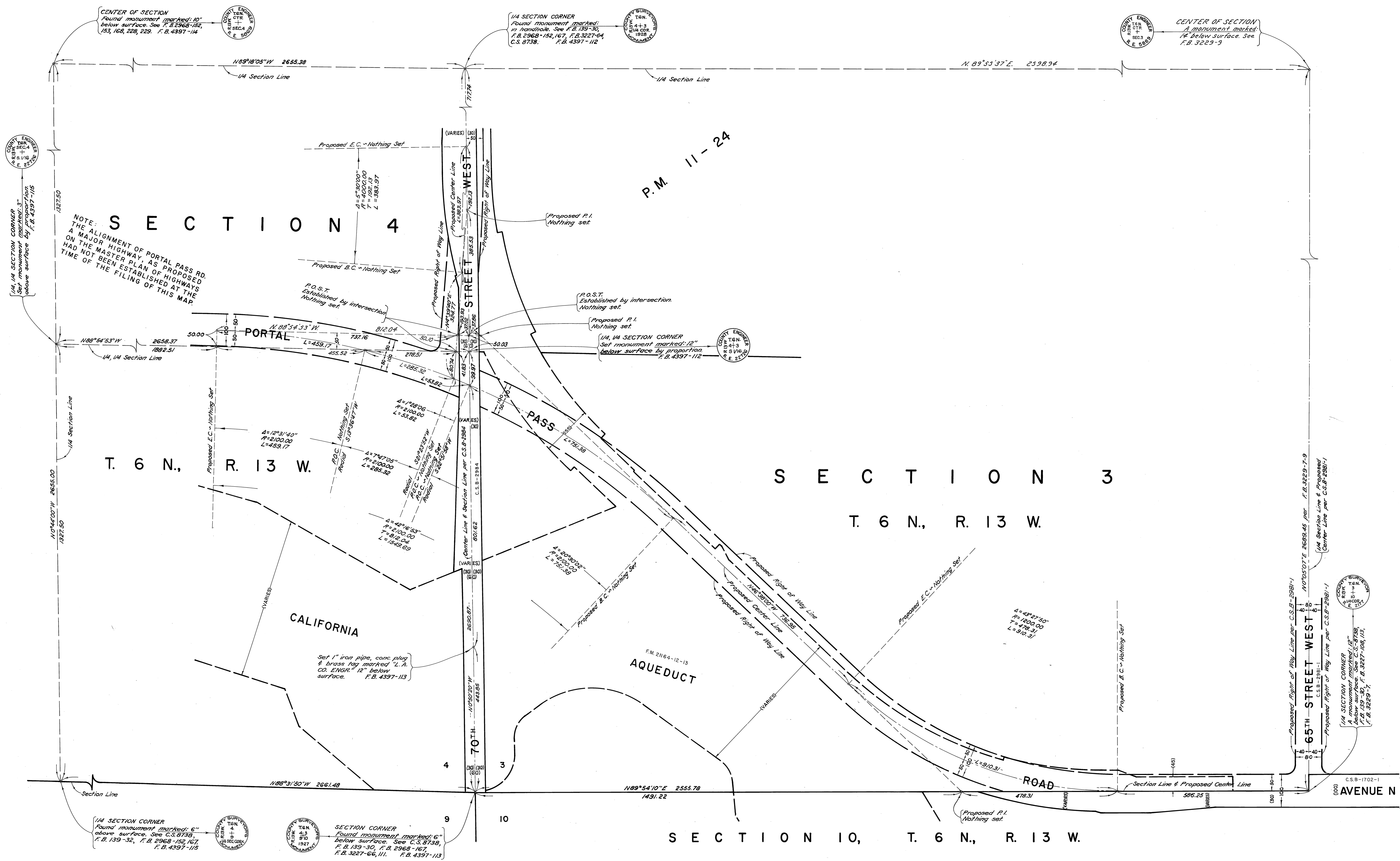
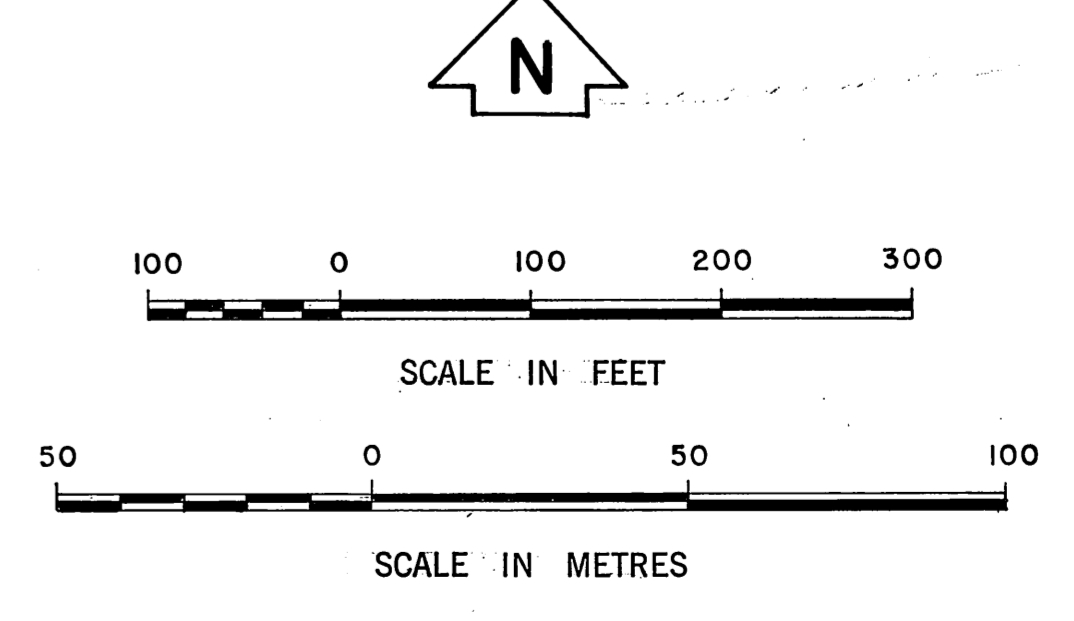


C.S.B-2345



NOTE: THE ALIGNMENT OF PORTAL PASS RD. A MAJOR HIGHWAY, AS PROPOSED ON THE MASTER PLAN OF HIGHWAYS HAD NOT BEEN ESTABLISHED AT THE TIME OF THE FILING OF THIS MAP.

P.M. 11-24



COUNTY OF LOS ANGELES DEPARTMENT OF COUNTY ENGINEER-FACILITIES STEPHEN J. KOONCE-COUNTY ENGINEER PREPARED BY SURVEY DIVISION RICHARD J. MITCHELL-DIVISION ENGINEER SURVEYED BY J. C. PIERCE CHECKED BY R. D. BARTHOLOMEW DRAWN BY J. E. MERRILL	ALIGNMENT MAP OF PORTAL PASS ROAD FROM 65TH STREET WEST TO 70TH STREET WEST		COUNTY SURVEYOR'S MAP NO. B-5342	REVISION NO. BY DATE
	SHEET 1 OF 1 SHEETS FILED: <i>March 28</i> 1977 <i>R. J. Mitchell</i> COUNTY ENGINEER		SURVEYED SEPTEMBER 1977	
	BASIS OF BEARINGS THE SOUTH LINE OF SECTION 3, T. 6 N., R. 13 W., (S. 89° 54' 10" W.) AS SHOWN ON C.S.B-2984.		REFERENCE F.B. 4397	
	JOB NUMBER 0207.89		INDEX MAP NO. 64	

C.S.B-2345