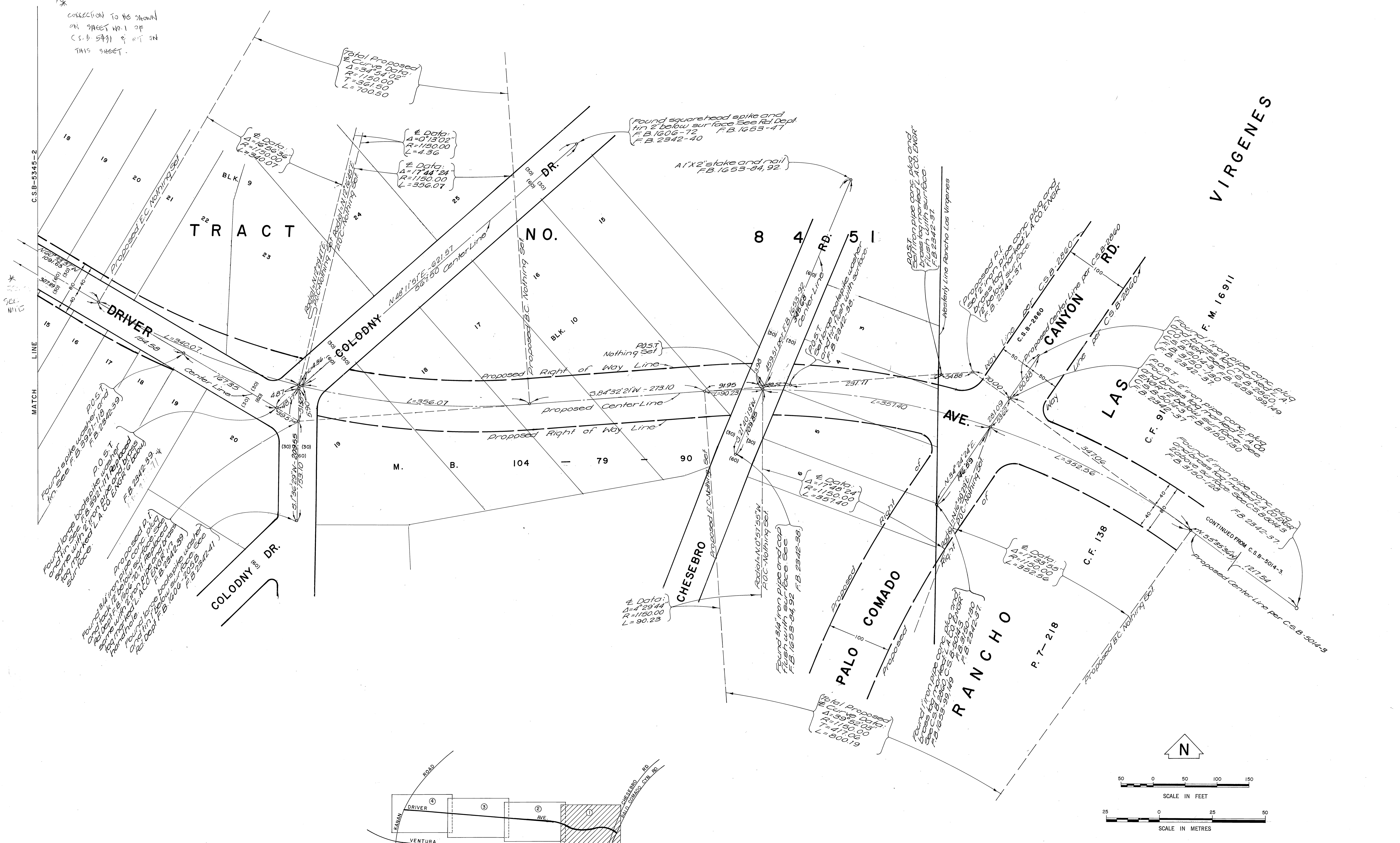
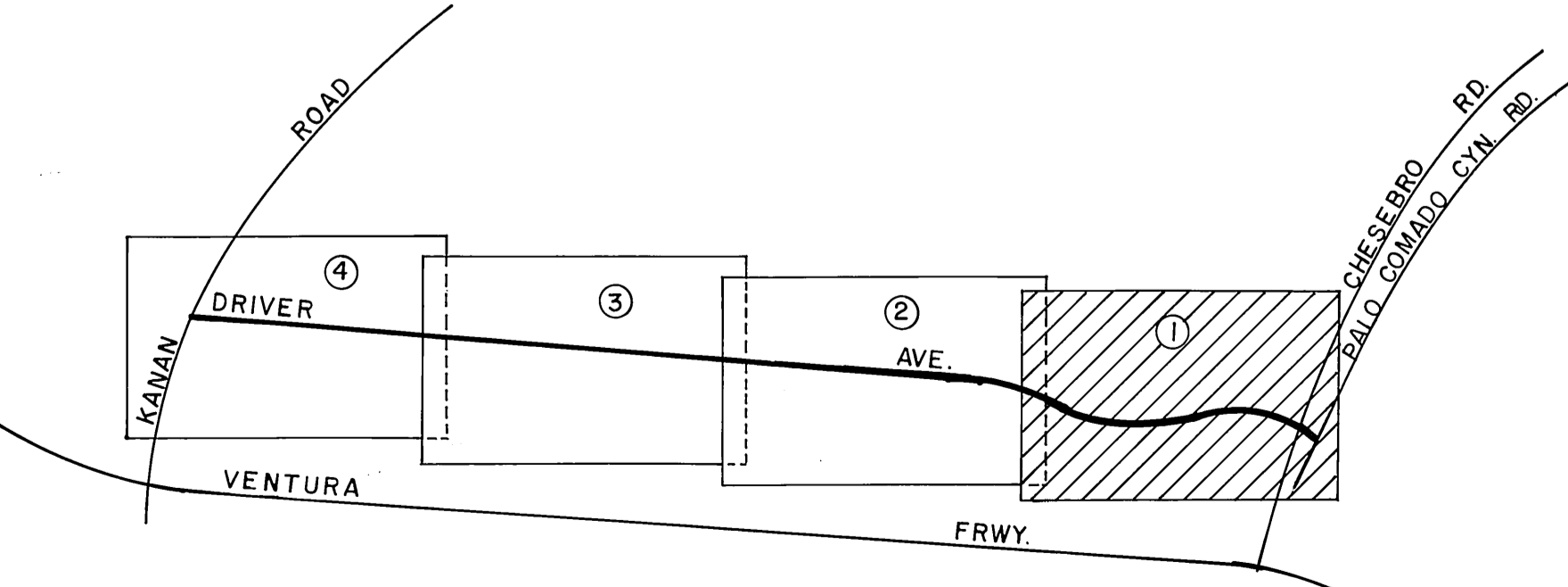
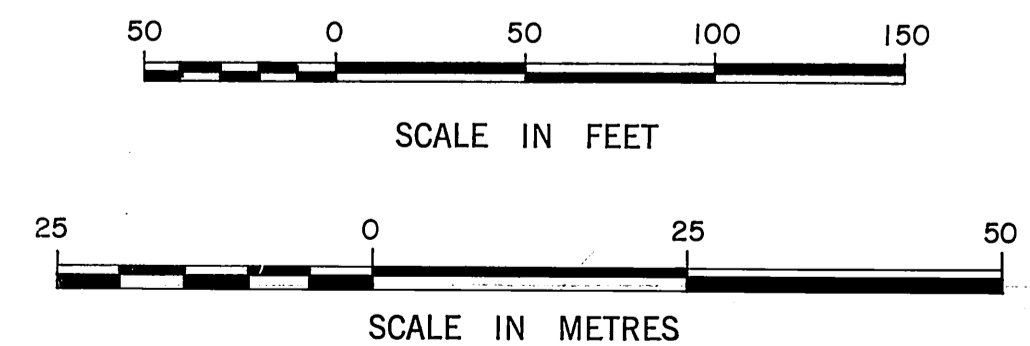
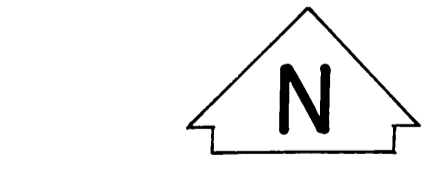


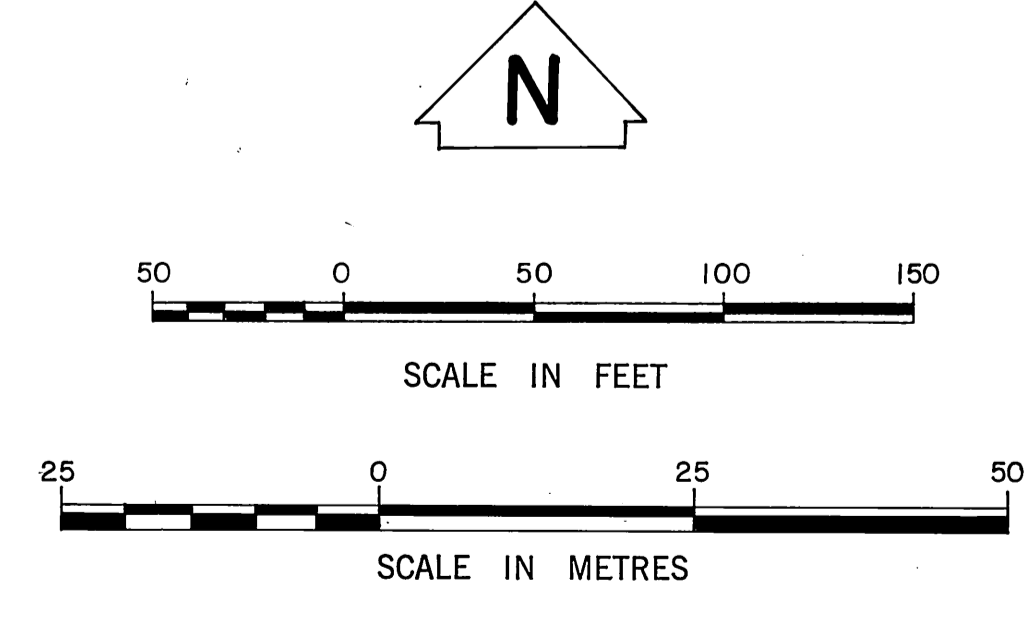
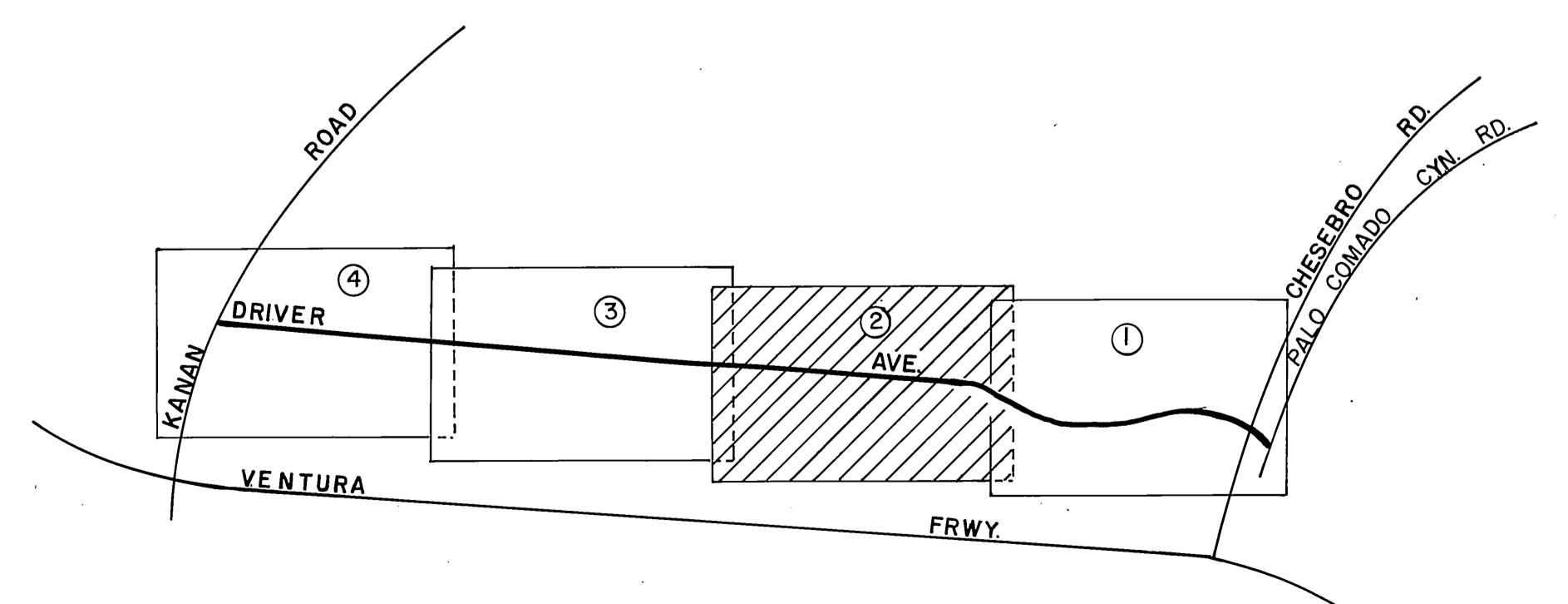
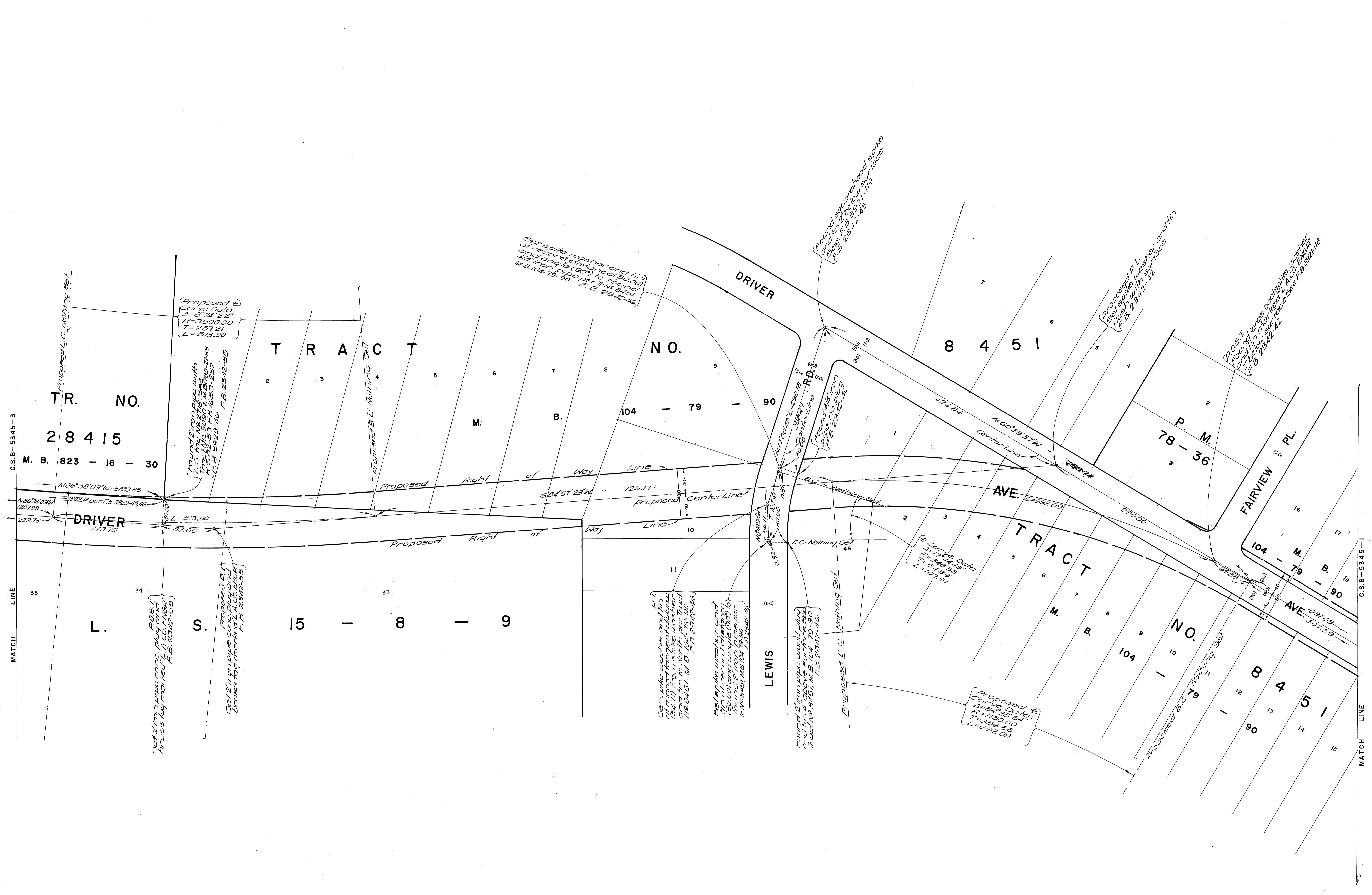
NOTE:  
\* correction to be shown on sheet No. 1 of C.S.B. 5345-2 in this sheet.



VIRGENES



COUNTY OF LOS ANGELES DEPARTMENT OF COUNTY ENGINEER-FACILITIES STEPHEN J. KOONCE-COUNTY ENGINEER PREPARED BY SURVEY DIVISION RICHARD J. MITCHELL-DIVISION ENGINEER SURVEYED BY R. C. DALE CHECKED BY M. DOSOKY DRAWN BY B. GOINS	ALIGNMENT MAP OF <b>DRIVER AVENUE</b> FROM <b>PALO COMADO CANYON ROAD</b> TO <b>KANAN ROAD</b> BASIS OF BEARINGS THE CENTERLINE OF DRIVER AVE (N.55°35'36"W.) AS SHOWN ON C.S.B-5014-3.		COUNTY SURVEYOR'S MAP NO. <b>B-5345</b> SHEET 1 OF 4 SHEETS FILED: February 23, 1977 BY: Mitchell	REVISION NO. BY DATE
	SURVEYED JUNE 1976		REFERENCE F.B. 2342	
	JOB NUMBER 0206.56		INDEX MAP NO. 159-057	
	CONTINUED FROM C.S.B-5014-3 (217.54)			



COUNTY OF LOS ANGELES DEPARTMENT OF COUNTY ENGINEER-FACILITIES STEPHEN J. KOONCE-COUNTY ENGINEER PREPARED BY SURVEY DIVISION RICHARD J. MITCHELL-DIVISION ENGINEER SURVEYED BY R. C. DALE CHECKED BY M. DOSOJKY DRAWN BY B. GOINS	ALIGNMENT MAP OF <b>DRIVER AVENUE</b> FROM <b>PALO COMADO CANYON ROAD</b> TO <b>KANAN ROAD</b> BASIS OF BEARINGS THE CENTERLINE OF DRIVER AVE. (N.5° 35' 36" W.) AS SHOWN ON C.S.B-5014-3.		COUNTY SURVEYOR'S MAP NO. <b>B-5345</b> SHEET 2 OF 4 SHEETS FILED: February 23 1977 <i>R. J. Mitchell</i> COUNTY SURVEYOR	REVISION NO. BY DATE
	SURVEYED JUNE 1976		REFERENCE F.B. 2342	
	JOB NUMBER 0206.56		INDEX MAP NO. 159-057	



