

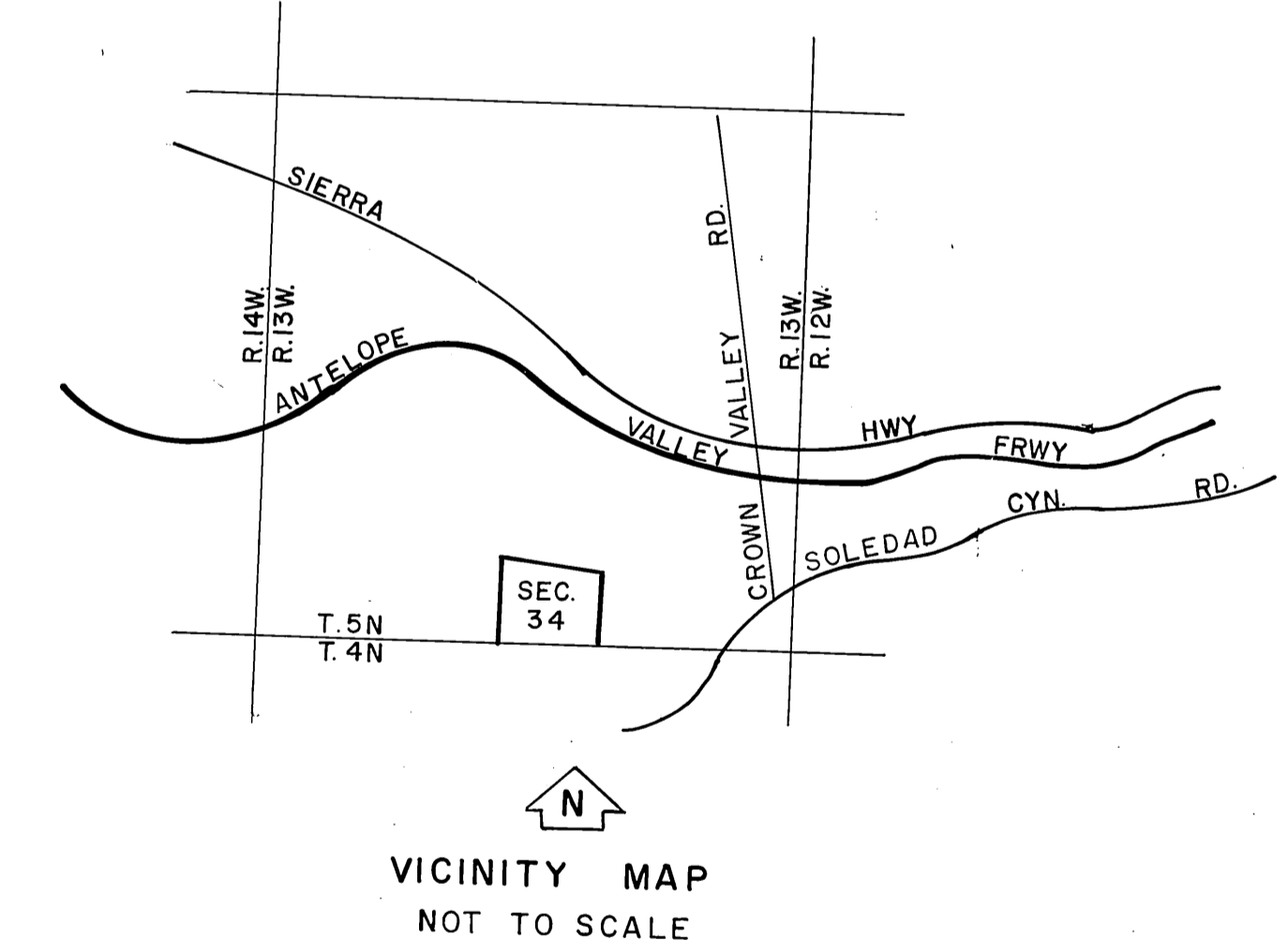
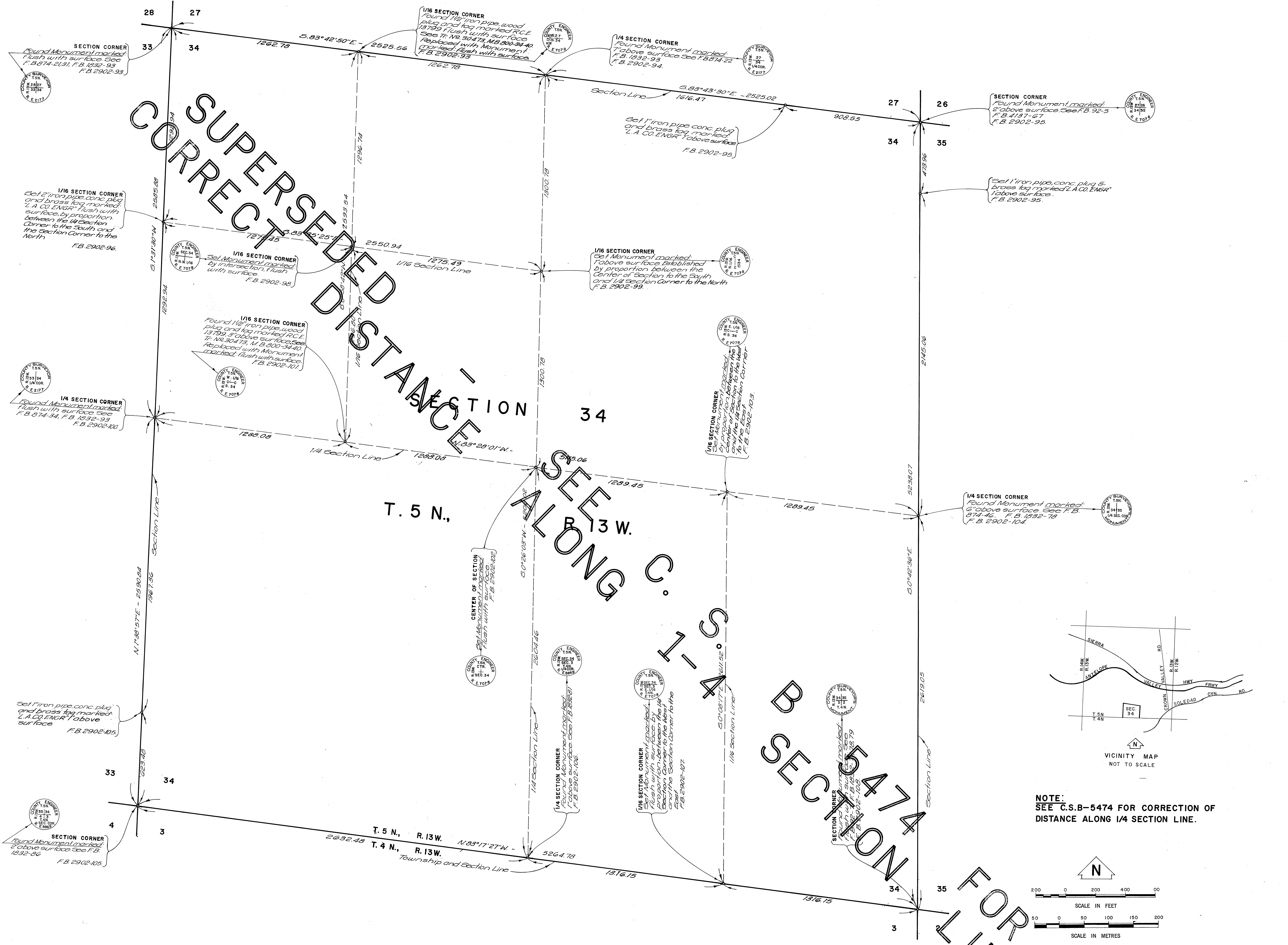
C-2B-2323

CORRECTED DISTANCE

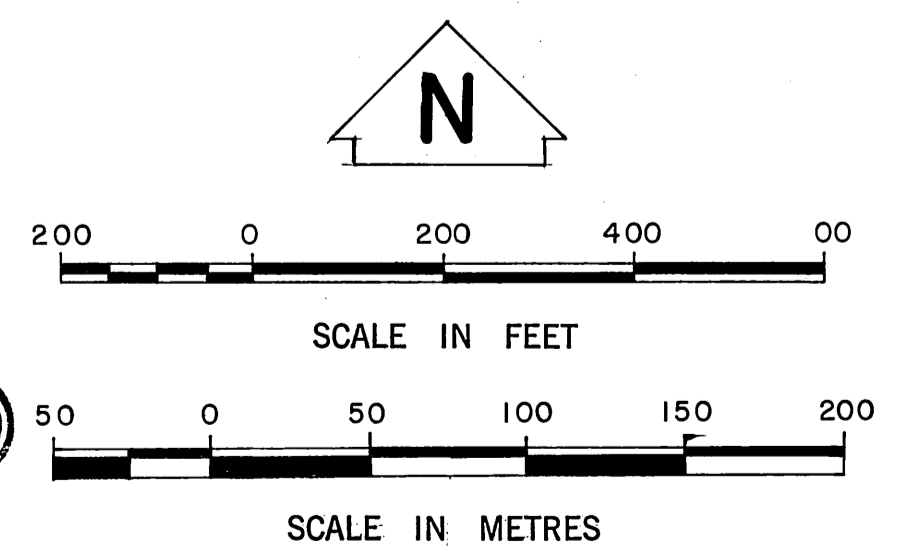
ALONG C.

SECTION 34

FOR



NOTE:  
SEE C.S.B-5474 FOR CORRECTION OF  
DISTANCE ALONG 1/4 SECTION LINE.



NOTE:  
THIS MAP WAS FILED FOR THE PURPOSE OF  
ESTABLISHING SECTION LINES. ALL OTHER  
CADASTRAL DATA HAS BEEN OMITTED.

COUNTY OF LOS ANGELES DEPARTMENT OF COUNTY ENGINEER-FACILITIES STEPHEN J. KOONCE-COUNTY ENGINEER PREPARED BY SURVEY DIVISION RICHARD J. MITCHELL-DIVISION ENGINEER SURVEYED BY J. MENDONCA CHECKED BY J.C. PIERCE DRAWN BY B. GOINS	MAP OF <b>SECTION 34</b> <b>T.5N., R.13W., S.B.M.</b>		COUNTY SURVEYOR'S MAP NO. <b>B-5353</b>	REVISION NO. BY DATE
	THE WEST LINE OF THE N.1/2 OF SECTION 34, T.5N., R.13W. (S.1°31'30"W) PER C.S.B-1805.		SHEET 1 OF 1 SHEET FILED: 12/24/18 11/11/18 DEPT.	SURVEYED DEC. 1975 REFERENCE F.B. 2902
	BASIS OF BEARINGS		JOB NUMBER 0302-01	INDEX MAP NO. 64
	COUNTY ENGINEER T.S.N. R.13W. S.B.M.		COUNTY ENGINEER T.S.N. R.13W. S.B.M.	

C-2B-2323