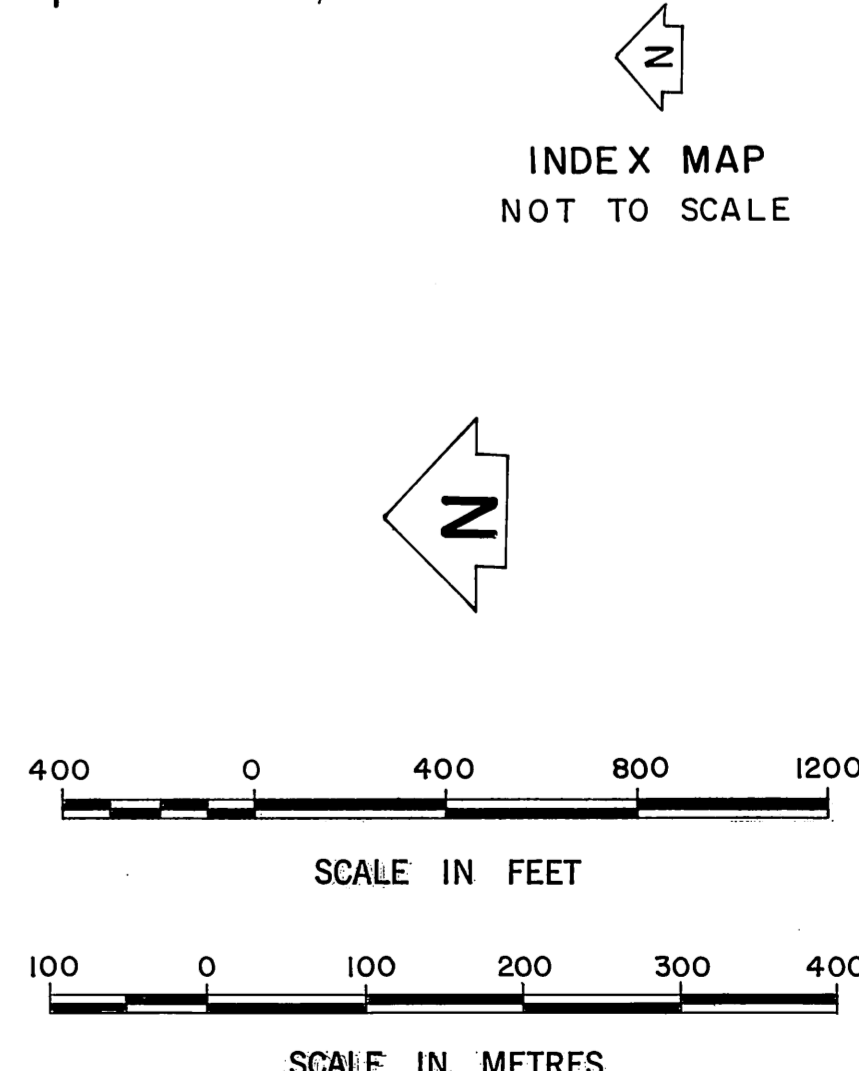
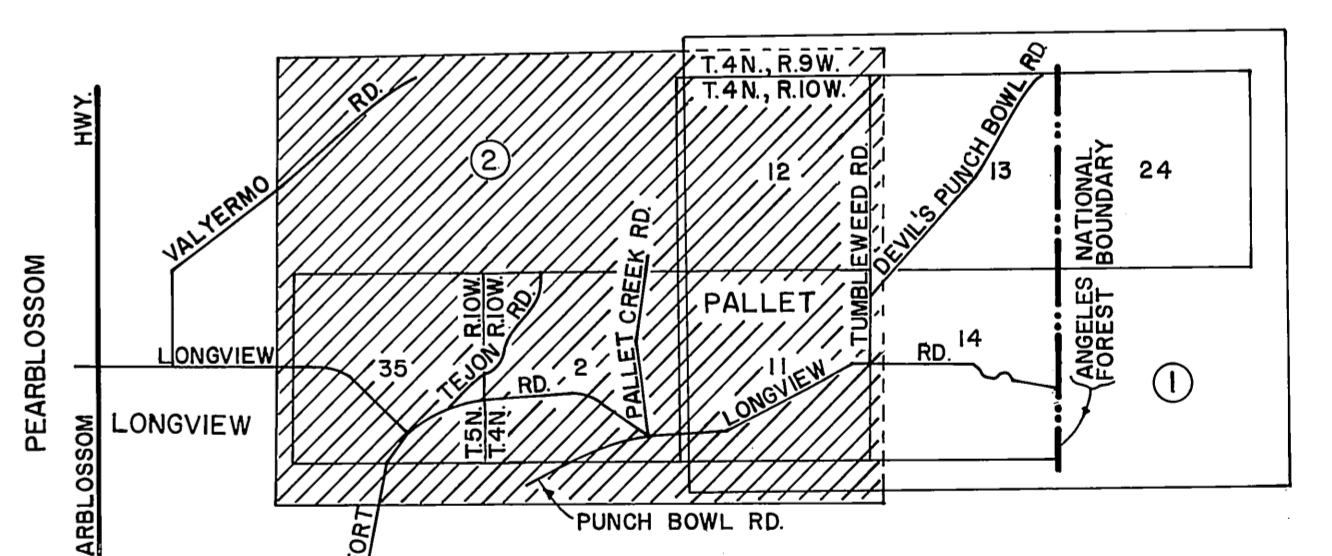
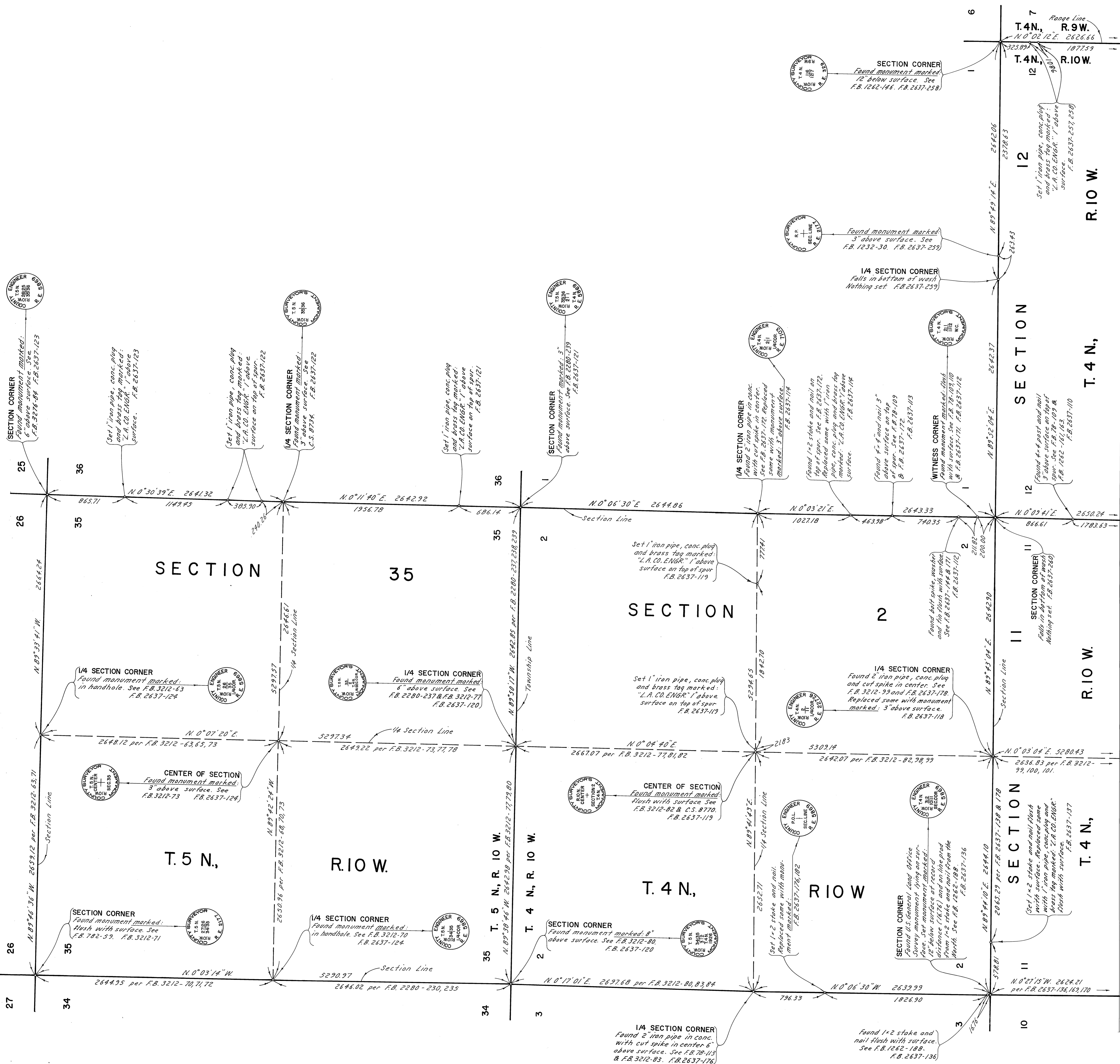


NOTE: THIS MAP WAS FILED FOR THE PURPOSE OF ESTABLISHING SECTION LINES. ALL OTHER CADASTRAL DATA HAS BEEN OMITTED

COUNTY OF LOS ANGELES DEPARTMENT OF COUNTY ENGINEER-FACILITIES STEPHEN J. KOONCE-COUNTY ENGINEER PREPARED BY SURVEY DIVISION RICHARD J. MITCHELL-DIVISION ENGINEER J.S. COATES SURVEYED BY M.L. YOSE CHECKED BY R.C. RIECKHOFF DRAWN BY G. MASUDA	MAP OF SECTIONS 2, 11, 12, 13, 14, & 24, T.4N., R.10W., S.B.M. & SECTION 35, T.5N., R.10W., S.B.M.		COUNTY SURVEYOR'S MAP NO. B-5361 SHEET 1 OF 2 SHEETS FILED: <i>M.L. Yose</i> 1977 <i>R.J. Mitchell</i> DEPUTY SURVEYED DEC. 1976	REVISION NO. BY DATE
	BASIS OF BEARINGS THE WEST LINE OF THE SW 1/4 OF SECTION 35, T.5N., R.10W. (N.0°03'14"W) AS SHOWN ON C.S.B-5143-1			REFERENCE F.B. 2637 C.S.B-5143-1 JOB NUMBER 0302.01 INDEX MAP NO. 66 & 92
	SCALE IN FEET 0 400 800 1200 SCALE IN METRES 0 100 200 300 400			
	COUNTY ENGINEER RICHARD J. MITCHELL DEPUTY SURVEYOR			



NOTE:
THIS MAP WAS FILED FOR THE PURPOSE OF
ESTABLISHING SECTION LINES. ALL OTHER
CADASTRAL DATA HAS BEEN OMITTED.

COUNTY OF LOS ANGELES DEPARTMENT OF COUNTY ENGINEER-FACILITIES STEPHEN L. KONGSE-COUNTY ENGINEER PREPARED BY SURVEY DIVISION RICHARD J. MITCHELL-DIVISION ENGINEER J.S. COATES SURVEYED BY M.V. VOGSE CHECKED BY R.G. RIECKHOFF DRAWN BY G. MASUDA	MAP OF SECTIONS 2, 11, 12, 13, 14, & 24, T. 4 N., R. 10 W., S.B.M. & SECTION 35, T. 5 N., R. 10 W., S.B.M.		COUNTY SURVEYOR'S MAP NO. B-5361 SHEET 2 OF 2 SHEETS FILED: <i>May 17, 1977</i> <i>R. J. Mitchell</i> SURVEYED D.C. 1976	REVISION NO. BY DATE	
	BASIS OF BEARINGS THE WEST LINE OF THE SW 1/4 OF SECTION 35, T. 5 N., R. 10 W. (N. 0° 03' 14" W.) AS SHOWN ON C.S.B-5143-1			REFERENCE F.B. 2637 C.S.B-5143-1 F.B. 3212	JOB NUMBER 0302.01
				INDEX MAP NO. 66 & 82	