

MATCH LINE C.S.B-5362-2

SECTION

24

25

SECTION

T. 5 N.,

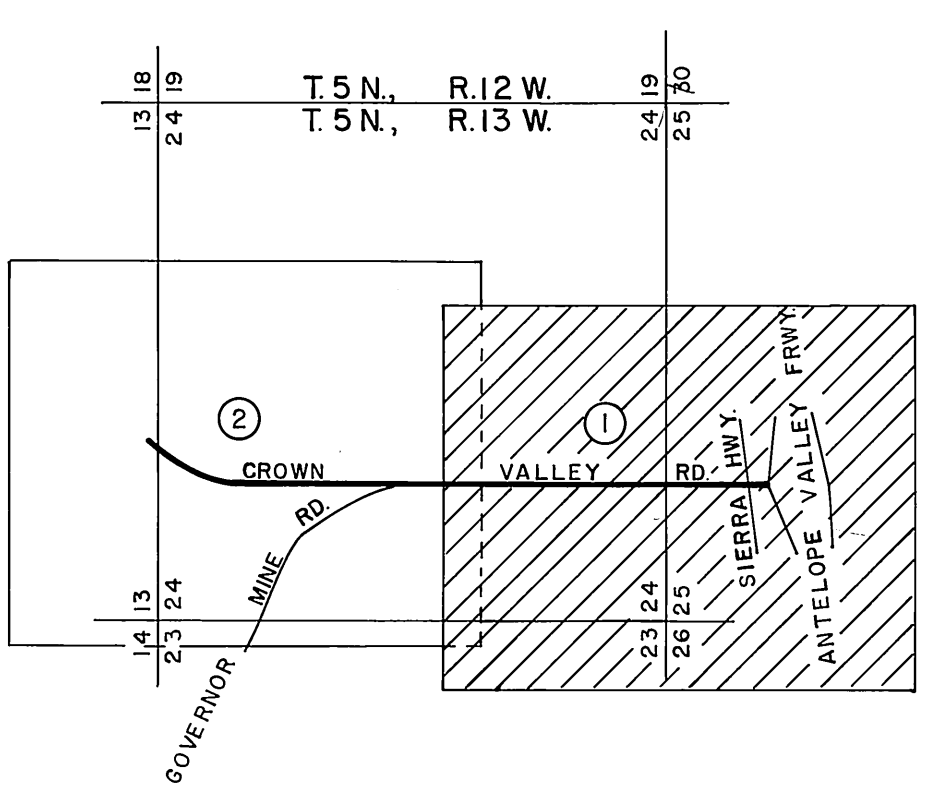
R. 13 W.

R. 13 W.

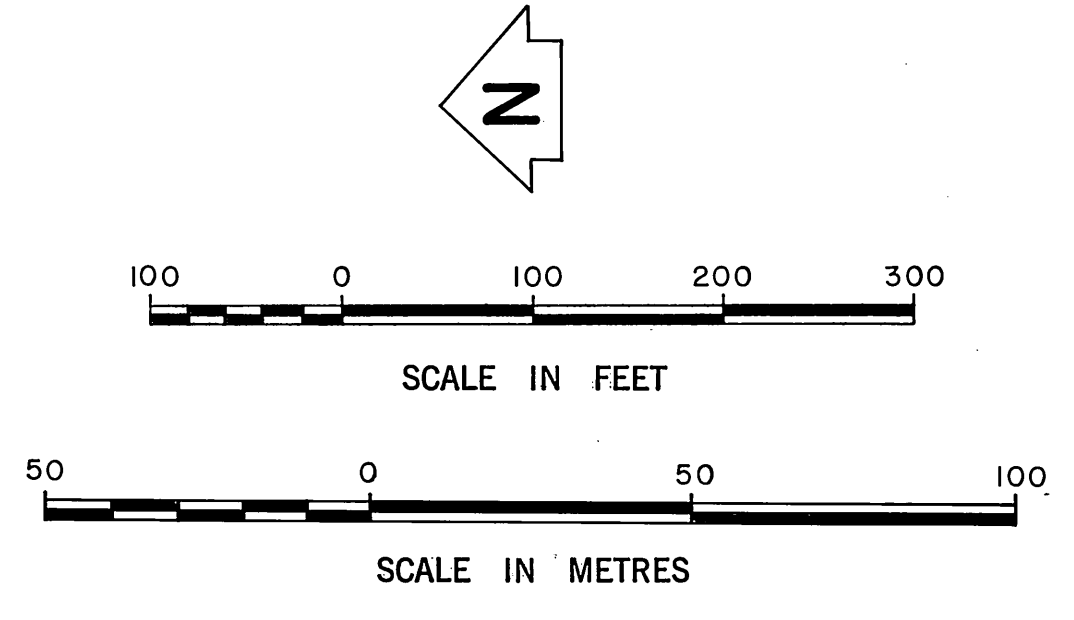
T. 5 N.,

ANTELOPE VALLEY

FRWY.

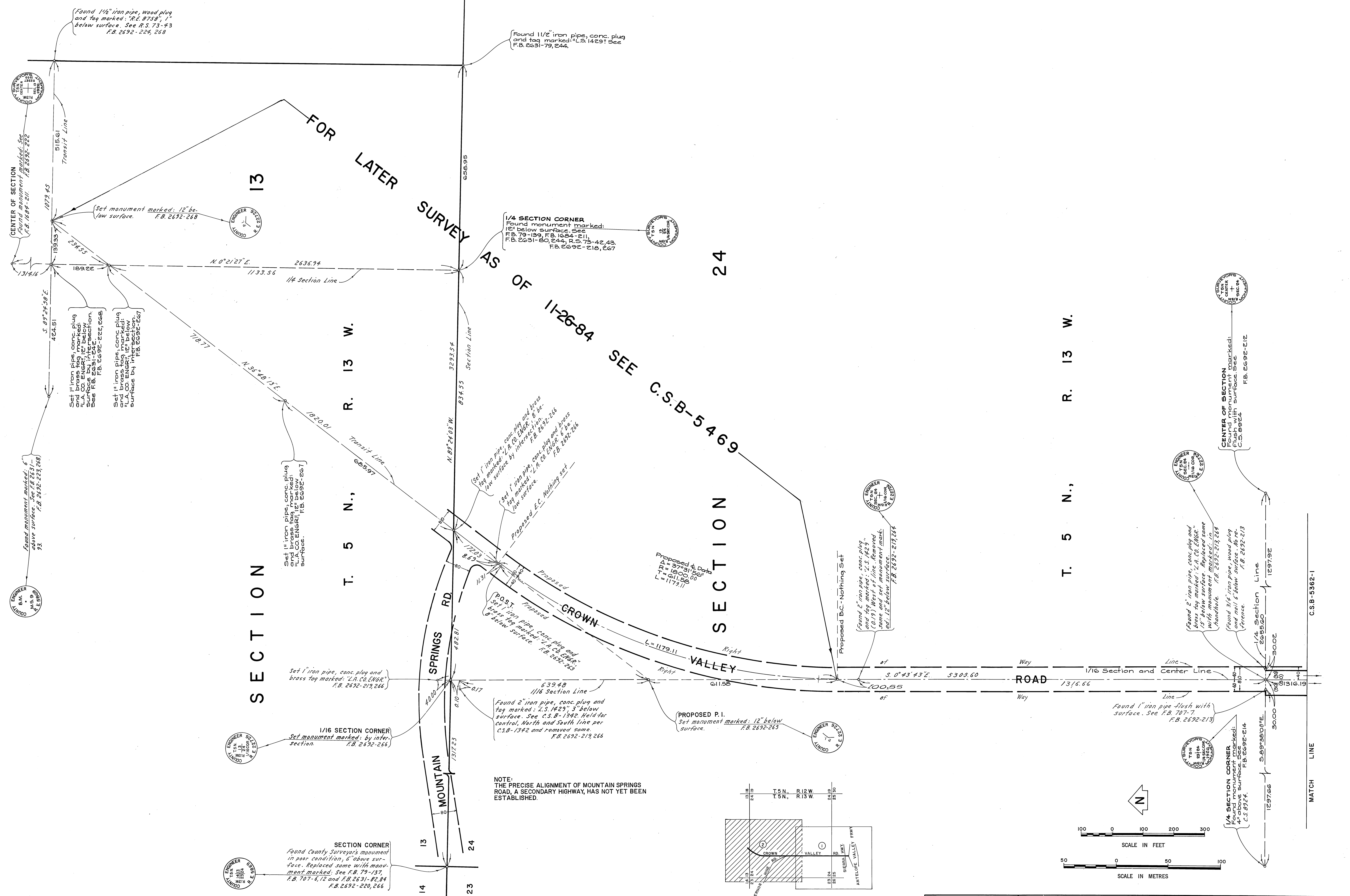


INDEX MAP NOT TO SCALE



COUNTY OF LOS ANGELES DEPARTMENT OF COUNTY ENGINEER-FACILITIES STEPHEN J. KOONCE-COUNTY ENGINEER PREPARED BY SURVEY DIVISION RICHARD J. MITCHELL ASSISTANT DEPUTY COUNTY ENGINEER SURVEYED BY J.C. COATES R. HILARIO CHECKED BY I. ABE G. MASUDA DRAWN BY A. MITCHELL	ALIGNMENT MAP OF CROWN VALLEY ROAD FROM SIERRA HIGHWAY TO MOUNTAIN SPRINGS ROAD BASIS OF BEARINGS CALIFORNIA COORDINATE SYSTEM, ZONE 7		COUNTY SURVEYOR'S MAP NO. B-5362 SHEET 1 OF 2 SHEETS FILED: <i>Mar 27 1963</i> <i>R.J. Mitchell</i> COUNTY SURVEYOR AUG. 1963 - DEC. 1977 REFERENCE F.B. 2692 F.B.G.1003 JOB NUMBER 022237 INDEX MAP NO. 64	REVISION NO. BY DATE

R. S. 73 - 42 - 43

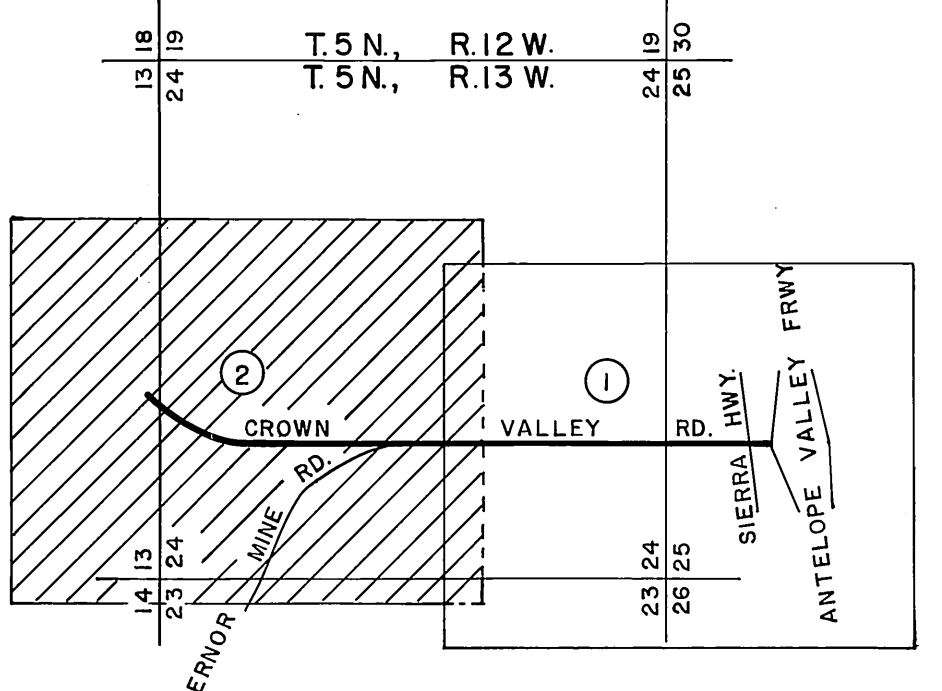


SECTION CORNER
 Found County Surveyor's monument in poor condition, 6" above surface. Replaced same with monument marked. See F.B. 79-137, F.B. 707-6, 12 and F.B. 2631-82, 84, F.B. 2692-220, 266.

1/16 SECTION CORNER
 Set monument marked: by intersection. F.B. 2692-266.

Set 1" iron pipe, conc. plug and brass tag marked: "L.A. CO. ENGR." F.B. 2692-219, 266.

NOTE:
 THE PRECISE ALIGNMENT OF MOUNTAIN SPRINGS ROAD, A SECONDARY HIGHWAY, HAS NOT YET BEEN ESTABLISHED.



INDEX MAP
 NOT TO SCALE

COUNTY OF LOS ANGELES DEPARTMENT OF COUNTY ENGINEER-FACILITIES STEPHEN J. KOONCE-COUNTY ENGINEER PREPARED BY SURVEY DIVISION RICHARD J. MITCHELL ASSISTANT DEPUTY COUNTY ENGINEER SURVEYED BY J. C. COATES R. HILARIO CHECKED BY J. ABE G. MASUDA DRAWN BY A. MITCHELL	ALIGNMENT MAP OF CROWN VALLEY ROAD FROM SIERRA HIGHWAY TO MOUNTAIN SPRINGS ROAD BASIS OF BEARINGS CALIFORNIA COORDINATE SYSTEM, ZONE 7		COUNTY SURVEYOR'S MAP NO. B-5362 SHEET 2 OF 2 SHEETS FILED: <i>Map No. 29</i> 1982 SURVEYED AUG. 1963 - DEC. 1977 REFERENCE F.B. 2692 F.B. 61003	REVISION NO. BY DATE
	JOB NUMBER 02 2 2 3 7		INDEX MAP NO. 64	