

MATCH LINE

C.S.B-5363-2

ORANGE

DIAMOND

O R A N G E

FRWY.

FRWY.

P O M O N A

GOLDEN

SPRINGS DR.

PALOMINO DR.

GENTLE SPRING LN.

P. M. 106 72 - 73

P. M. 27 - 57

P. M. 27 - 88

P. M. 28 - 70

P. M. 49 - 20

P. M. 52 - 39

N. 13° 29' 44" E. 856.23

L = 360.33

Curve Data
 $\Delta = 11^{\circ} 00' 35"$
 $R = 1875.32$
 $T = 180.73$
 $L = 360.33$

Curve Data
 $\Delta = 41^{\circ} 49' 30"$
 $R = 1649.82$
 $T = 630.82$
 $L = 1204.34$

C.C. Found PK nail flush with sur-
 face. See State Division of High-
 ways, F.B. 057B-0014 and F.B.
 057B-016. Removed same and set
 large boat spike, tin and washer
 marked: "C.A. CO. 11/17/72". F.B. 4344-48

P.C.C. Found PK nail 1" below sur-
 face. See State Division of High-
 ways, F.B. 057B-0002, 0012 and
 057B-015. Removed same and
 set large boat spike, tin and washer
 marked: "C.A. CO. 11/17/72". F.B. 4344-47

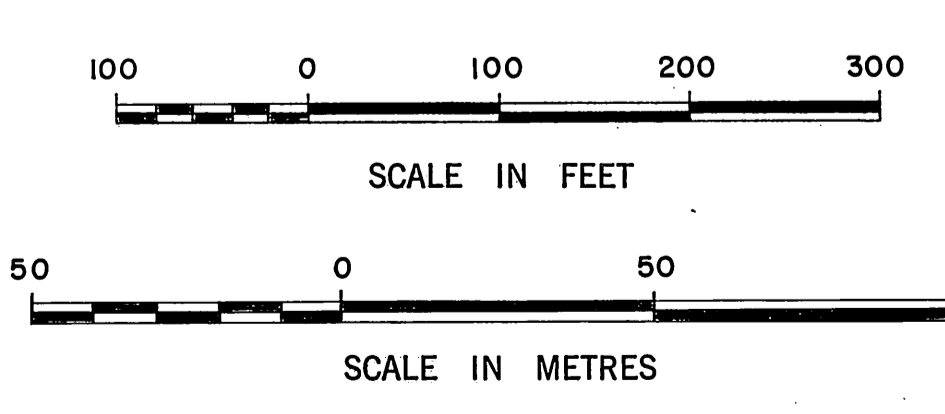
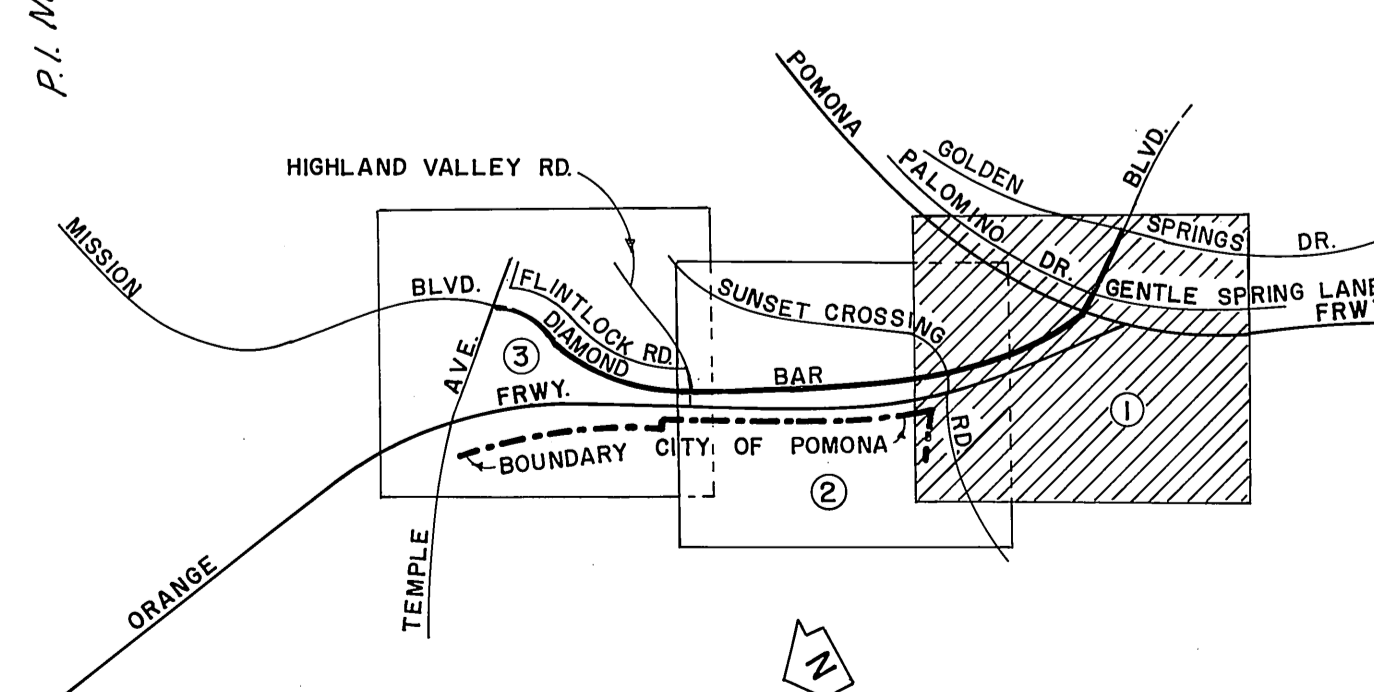
Found PK nail flush with sur-
 face. Applied same with
 iron pipe cap, pin and washer
 marked: "C.A. CO. 11/17/72".
 F.B. 4344-207

Set 1" iron pipe, connecting and
 secure the mark of "C.A. CO. 11/17/72"
 to below surface. See F.B. 4344-42.
 Found round head spike flush
 with surface. Set F.B. 4344-25
 same and set monument mark-
 ed: "C.A. CO. 11/17/72". F.B. 4344-47

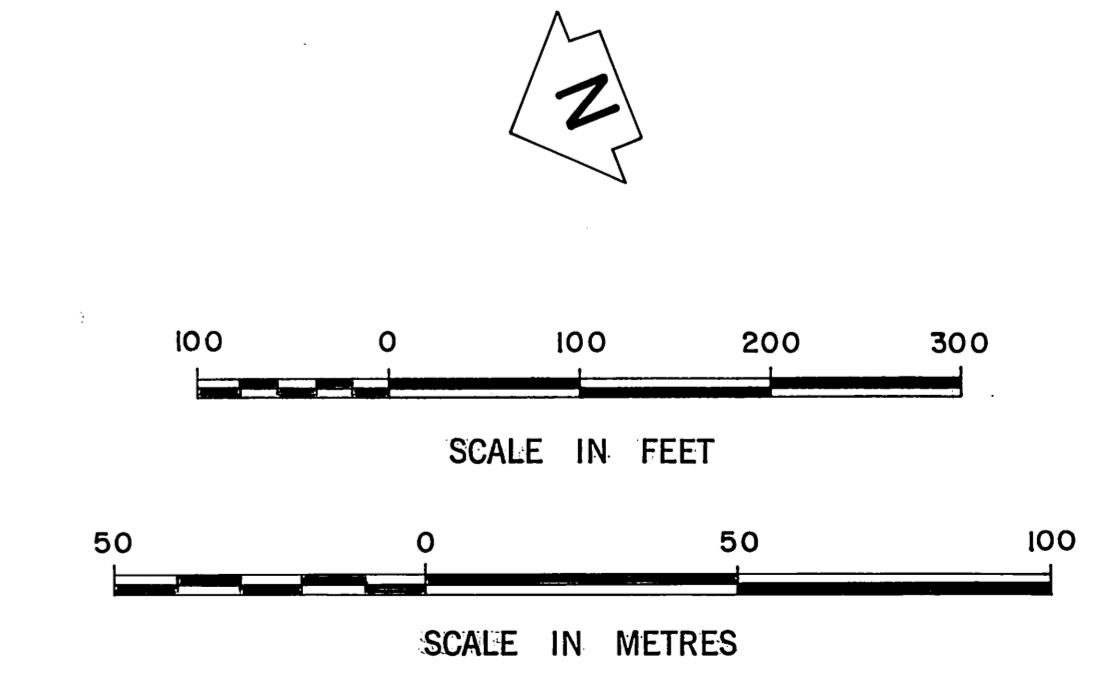
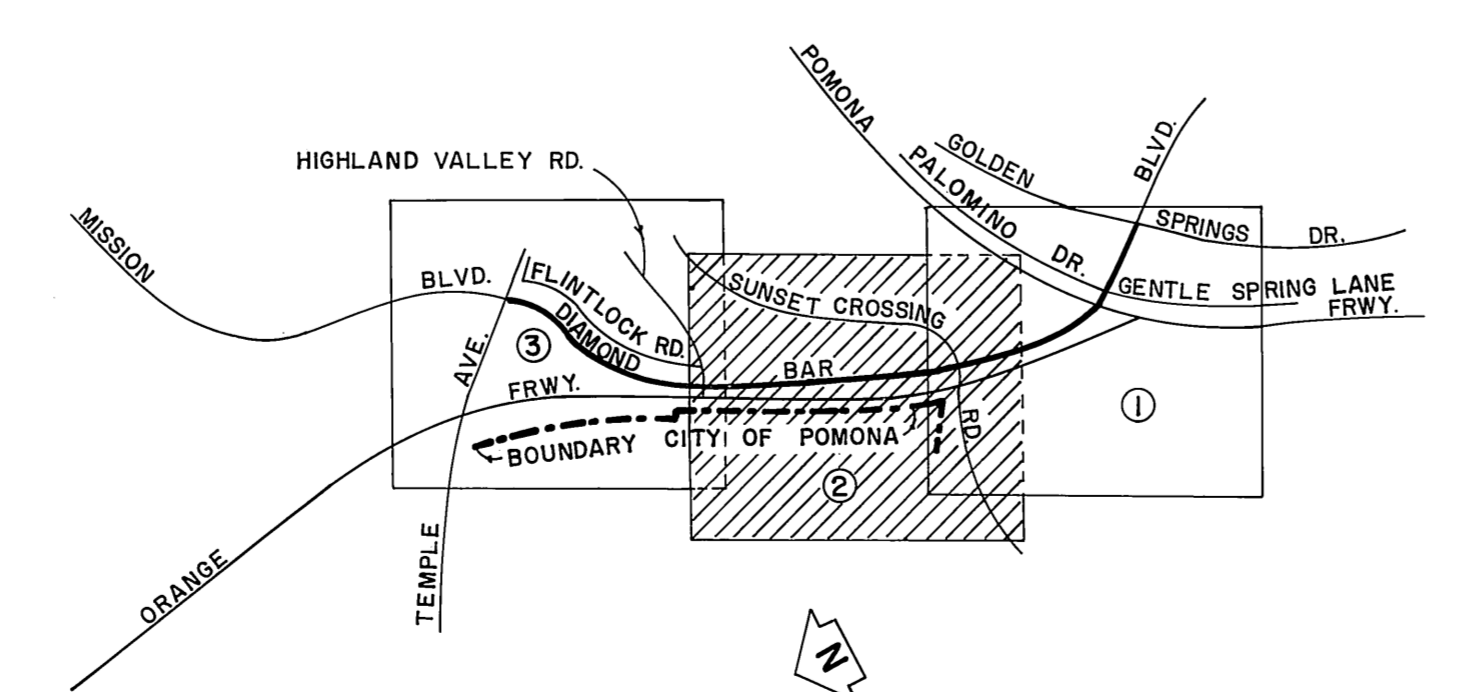
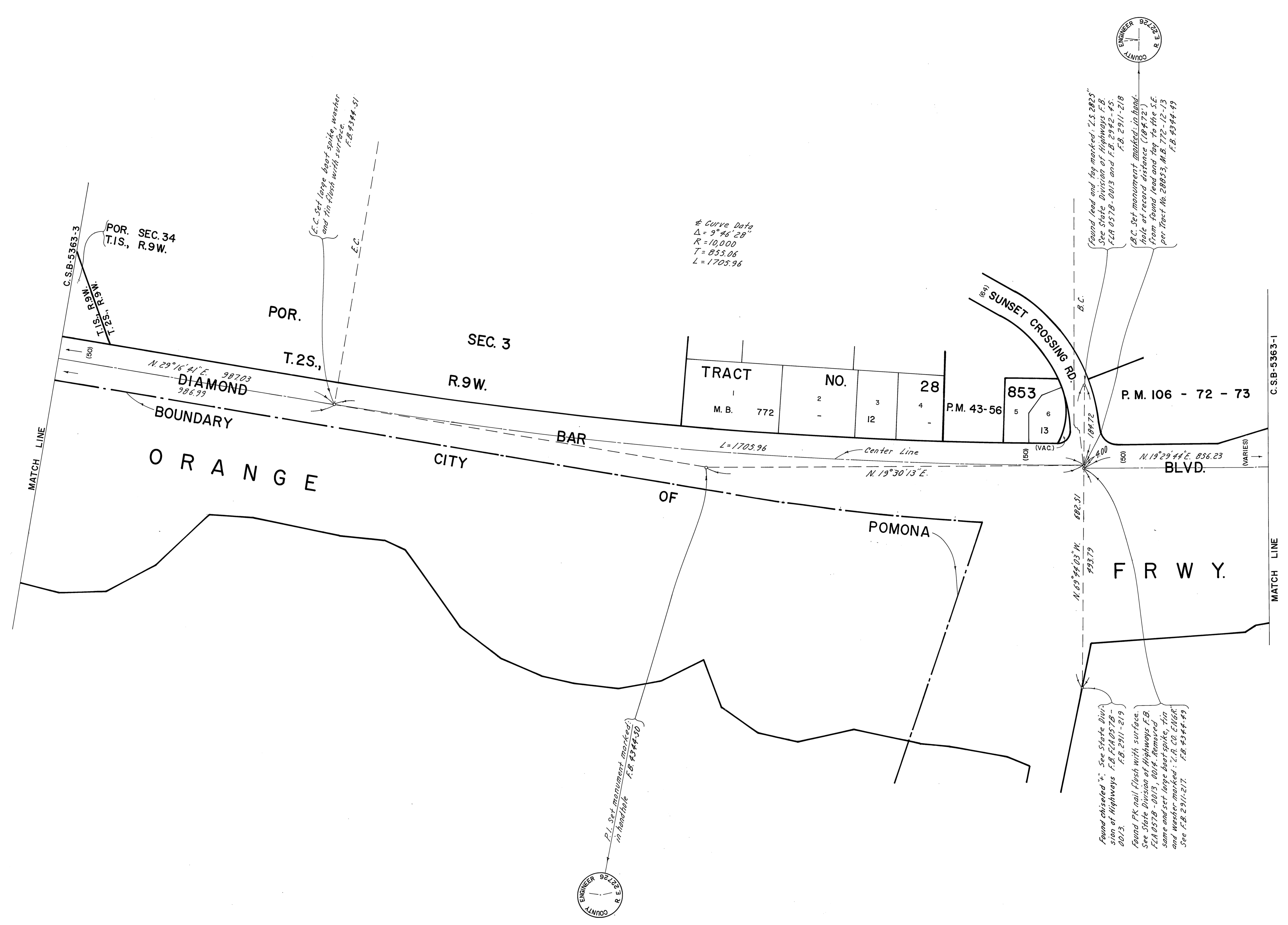
Set square head spike flush
 with surface of record dr.
 Name (C.A. CO.) Line Diamond
 No. 687-71-72. F.B. 4344-93

Set boat spike flush with surface
 by line per F.B. 4342-41, see F.B.
 4342-44 and F.B. 4344-44

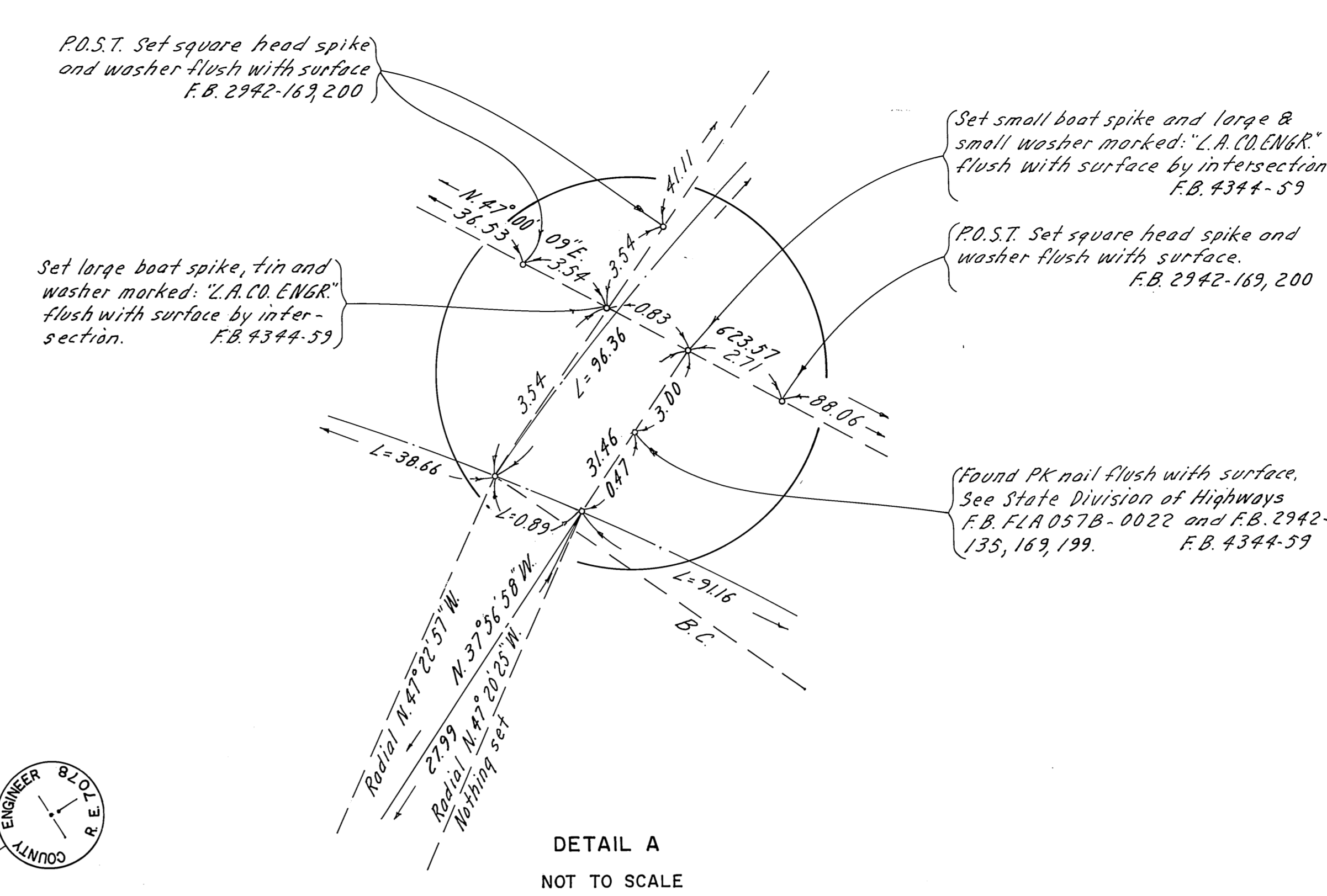
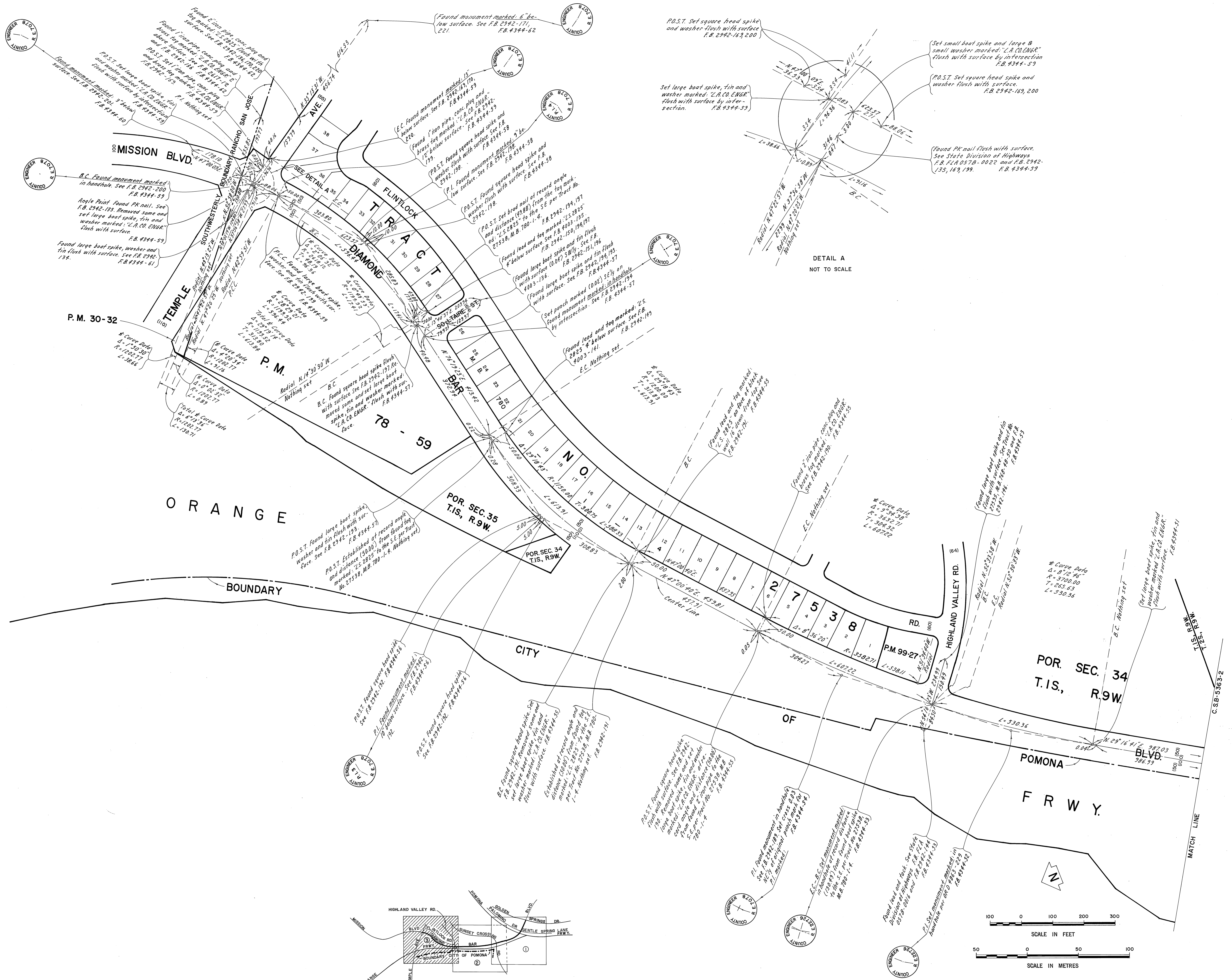
C.C. Found PK nail flush with sur-
 face. See State Division of High-
 ways, F.B. 057B-0110 and F.B.
 057B-011. Removed same and set
 large boat spike, tin and washer
 marked: "C.A. CO. 11/17/72". F.B. 4344-45



COUNTY OF LOS ANGELES DEPARTMENT OF COUNTY ENGINEER-FACILITIES STEPHEN J. KOONCE-COUNTY ENGINEER PREPARED BY SURVEY DIVISION RICHARD J. MITCHELL-DIVISION ENGINEER SURVEYED BY H.H. SPRIGGS CHECKED BY J. ARE DRAWN BY G. MASUDA	ALIGNMENT MAP OF		COUNTY SURVEYOR'S MAP NO. B-5363 SHEET 1 OF 3 SHEETS FILED: <i>December 22, 1977</i> <i>R. J. Mitchell</i> DEPUTY SURVEYED JULY 1977 REFERENCE F.B. 4344	REVISION NO. BY DATE
	DIAMOND BAR BLVD.			
	FROM GOLDEN SPRINGS DRIVE TO TEMPLE AVE.			
	BASIS OF BEARINGS			
CALIFORNIA COORDINATE SYSTEM, ZONE 7 PER C.S.B-5339		JOB NUMBER 0208.21	INDEX MAP NO. 39	



COUNTY OF LOS ANGELES DEPARTMENT OF COUNTY ENGINEER-FACILITIES STEPHEN J. KOONCE-COUNTY ENGINEER PREPARED BY SURVEY DIVISION RICHARD J. MITCHELL-DIVISION ENGINEER SURVEYED BY H.H. SPRIGGS CHECKED BY T. ABE DRAWN BY G. MASUDA	ALIGNMENT MAP OF DIAMOND BAR BLVD. FROM GOLDEN SPRINGS DRIVE TO TEMPLE AVE. BASIS OF BEARINGS		COUNTY SURVEYOR'S MAP NO. B 5363 SHEET 2 OF 3 SHEETS FILED: <i>Richard J. Mitchell</i> DEPUTY SURVEYED JULY 1977 REFERENCE F.B. 4344	REVISION NO. BY DATE
	CALIFORNIA COORDINATE SYSTEM, ZONE 7 PER C.S.B-5339		JOB NUMBER 020821	INDEX MAP NO. 39



P.M. 30-32

P.M.

78 - 59

POR. SEC. 35
T.1S., R.9W.

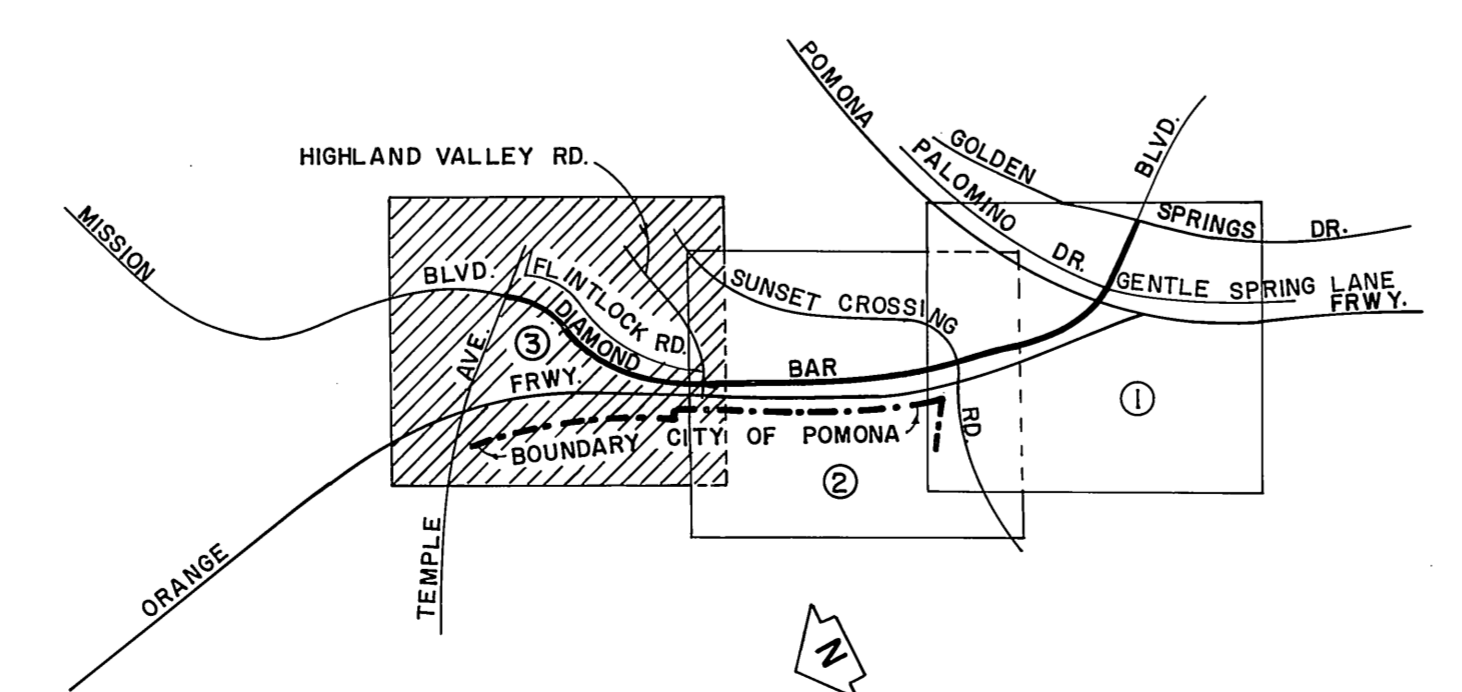
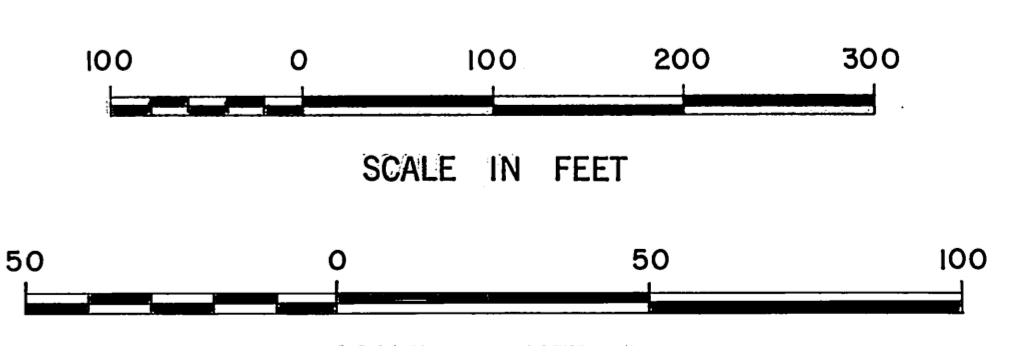
POR. SEC. 34
T.1S., R.9W.

2 7 5 3 8

P.M. 99-27

POR. SEC. 34
T.1S., R.9W.

POMONA
FRWY.



COUNTY OF LOS ANGELES DEPARTMENT OF COUNTY ENGINEER-FACILITIES STEPHEN J. KOONCE-COUNTY ENGINEER PREPARED BY SURVEY DIVISION RICHARD J. MITCHELL-DIVISION ENGINEER SURVEYED BY H.H. SPRIGGS CHECKED BY T. ARE DRAWN BY G. MASUDA	ALIGNMENT MAP OF DIAMOND BAR BLVD. FROM GOLDEN SPRINGS DRIVE TO TEMPLE AVE. BASIS OF BEARINGS CALIFORNIA COORDINATE SYSTEM, ZONE 7 PER C.S.B-5339		COUNTY SURVEYOR'S MAP NO. B-5363 SHEET 3 OF 3 SHEETS FILED: <i>[Signature]</i> 1977 DEPUTY SURVEYED JULY 1977 REFERENCE F.B. 4344	REVISION NO. BY DATE
	JOB NUMBER 020821		INDEX MAP NO. 39	