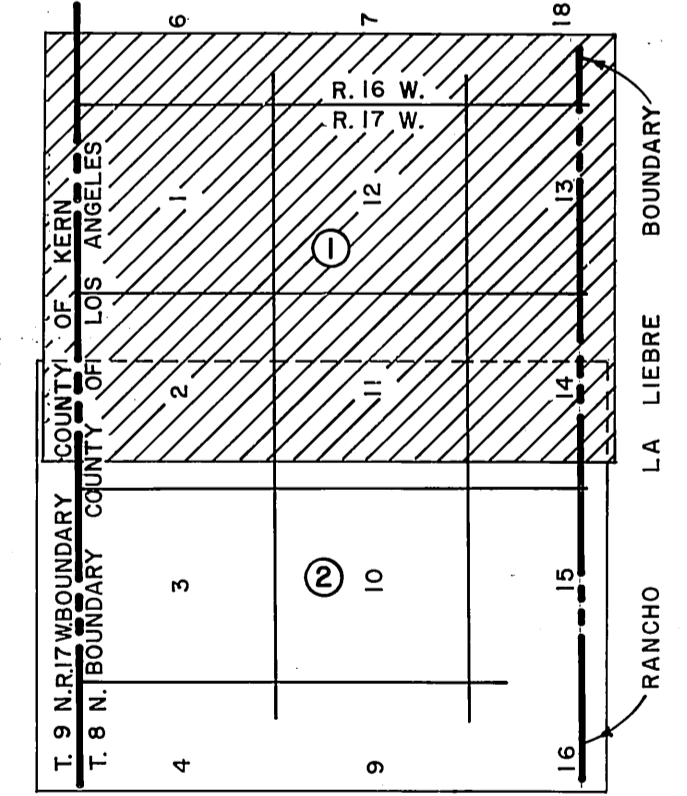
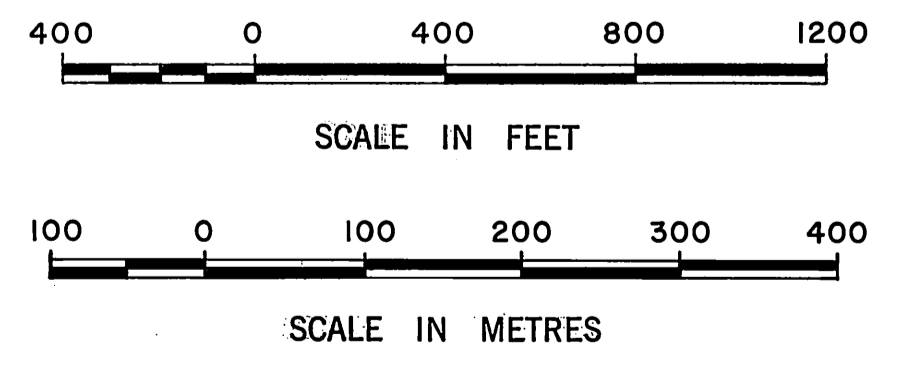


Set 2" iron plug, conc. plug and C.E. tag, 12" below surface.  
F.B. 3416-175

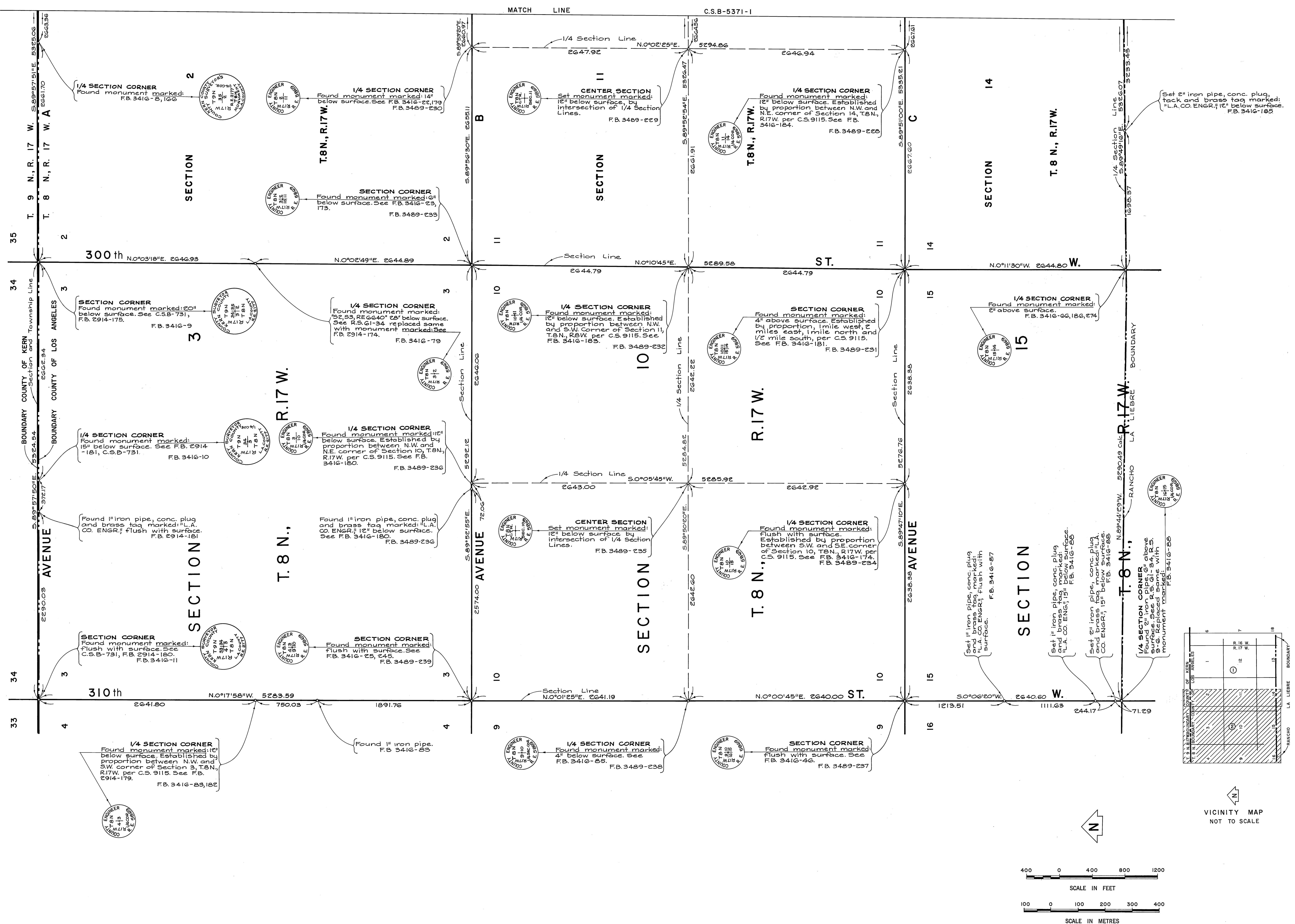


VICINITY MAP  
NOT TO SCALE



NOTE:  
THIS MAP WAS FILED FOR THE PURPOSE OF  
ESTABLISHING SECTION LINES. ALL OTHER  
CADASTRAL DATA HAS BEEN OMITTED.

COUNTY OF LOS ANGELES DEPARTMENT OF COUNTY ENGINEER-FACILITIES STEPHEN J. KOONCE-COUNTY ENGINEER PREPARED BY SURVEY DIVISION RICHARD J. MITCHELL-DIVISION ENGINEER S. HALISCHY SURVEYED BY J. MENDONCA CHECKED BY R. BOWERS DRAWN BY A. MITCHELL	MAP OF <b>SECTION 1, 2, 3, 10, 11, 12          N. 1/2, SECTION 13 &amp; 14          T. 8 N., R. 17 W. S.B.M.</b>		COUNTY SURVEYOR'S MAP NO. <b>B-5371</b>	REVISION NO. BY DATE
	SHEET 1 OF 2 SHEETS FILED: <i>October 10, 1977</i> <i>R. J. Mitchell</i> COUNTY ENGINEER		SURVEYED AUG. 1966 - APR. 1970	
	BASIS OF BEARINGS THE WESTERLY LINE OF SECTION 6, T. 8 N., R. 16 W., S.B.M. (N. 0° 01' 22" E.) AS SHOWN ON C.S.B-5104-36		REFERENCE F.B. 3416 F.B. 3489	
	JOB NUMBER 0302.01		INDEX MAP NO. 17	



NOTE:  
THIS MAP WAS FILED FOR THE PURPOSE OF  
ESTABLISHING SECTION LINES. ALL OTHER  
CADASTRAL DATA HAS BEEN OMITTED.

COUNTY OF LOS ANGELES DEPARTMENT OF COUNTY ENGINEER-FACILITIES STEPHEN J. KOONCE-COUNTY ENGINEER PREPARED BY SURVEY DIVISION RICHARD J. MITCHELL-DIVISION ENGINEER S. HALISCHY SURVEYED BY J. MENDONCA CHECKED BY R. BOWERS DRAWN BY A. MITCHELL	MAP OF <b>SECTION 1, 2, 3, 10, 11, 12</b> <b>N. 1/2, SECTION 13 &amp; 14, 15</b> <b>T. 8 N., R. 17 W. S.B.M.</b>		COUNTY SURVEYOR'S MAP NO. <b>B-5371</b>	REVISION NO. BY DATE
	SHEET 2 OF 2 SHEETS		FILED: <i>October 10, 1977</i> <i>R.J. Mitchell</i> COUNTY ENGINEER	
	SURVEYED AUG. 1966 - APR. 1970		REFERENCE F.B. 3416 F.B. 3489	
	BASIS OF BEARINGS THE WESTERLY LINE OF SECTION 6, T. 8 N., R. 16 W., S.B.M. (N.0°01'22"E.) AS SHOWN ON C.S.B-5104-36		JOB NUMBER 0302.01	INDEX MAP NO. 17

