

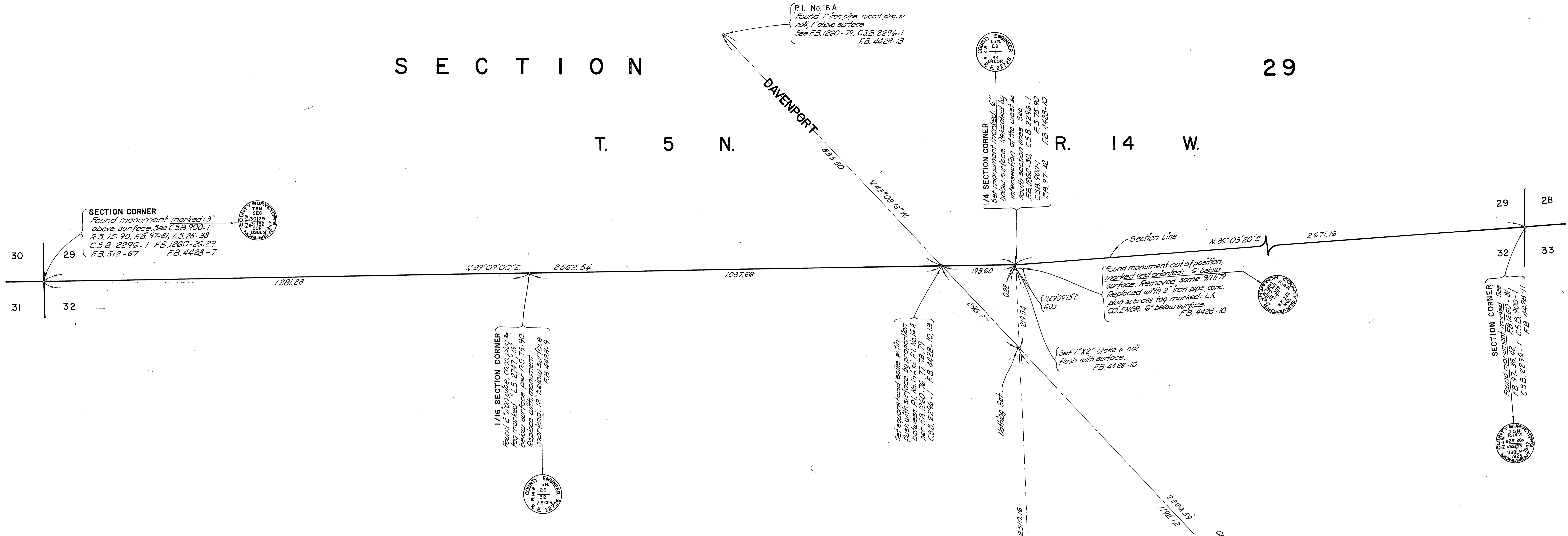
I-475 B.2.C

SECTION

T. 5 N.

R. 14 W.

29



SECTION

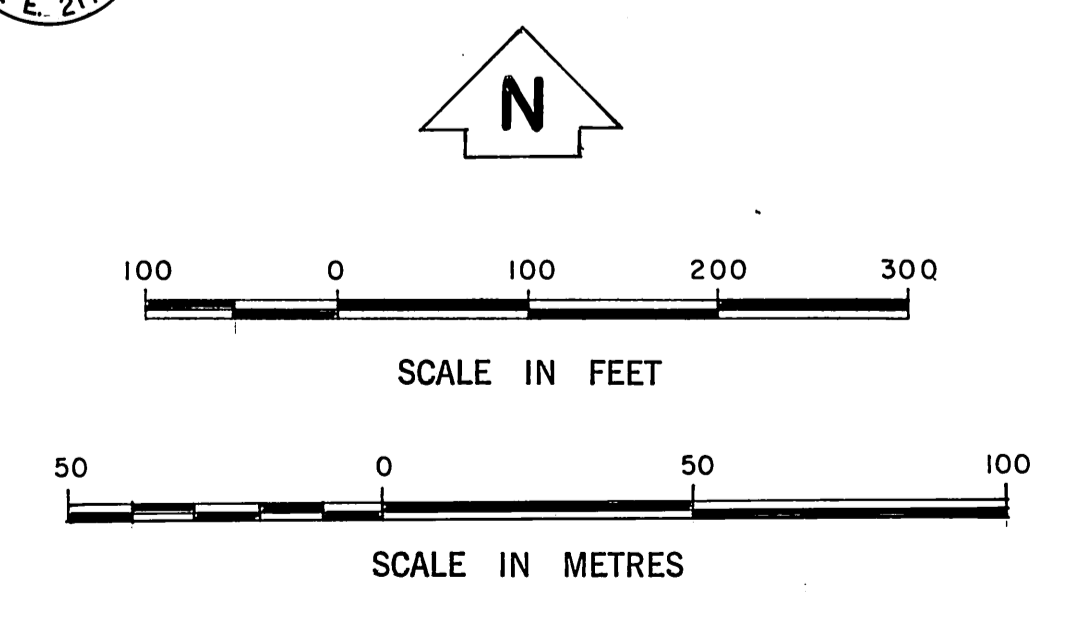
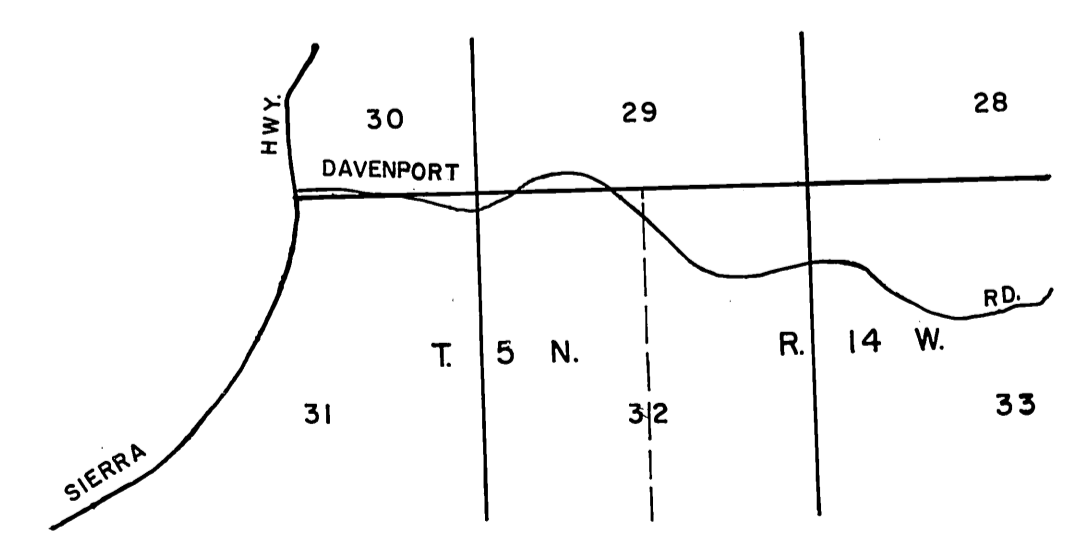
T. 5 N.

R. 14 W.

32

CENTER OF SECTION

Found U.S. General Land Office Survey brass cap monument. See C.S. 9446-9, C.S.B. 900-1, FB. 1260-59, 60. FB. 4428-12



COUNTY OF LOS ANGELES DEPARTMENT OF COUNTY ENGINEER-FACILITIES STEPHEN J. KOONCE-COUNTY ENGINEER PREPARED BY SURVEY DIVISION RICHARD J. MITCHELL-DIVISION ENGINEER SURVEYED BY J. PIERCE CHECKED BY R. BOWERS DRAWN BY F. NUNGA	MAP OF <b>SECTION 32</b> <b>T. 5 N., R. 14 W., S.B.M.</b>		COUNTY SURVEYOR'S MAP NO. <b>B-5374</b>	REVISION NO. BY DATE
	BASIS OF BEARINGS THE WEST HALF OF THE NORTH SECTION LINE OF SECTION 32 T. 5 N., R. 14 W. (N. 89° 09' 00" E.) AS SHOWN ON C. S. B. 2296 - 1.		SHEET 1 OF 1 SHEET FILED: <i>Steph Koonce</i> , 19 22 <i>Bill Bowers</i> DEPUTY SURVEYED AUGUST 1979 REFERENCE F.B. 4428	JOB NUMBER 0302.01 INDEX MAP NO. 78

C.2.B. 2374 - 1