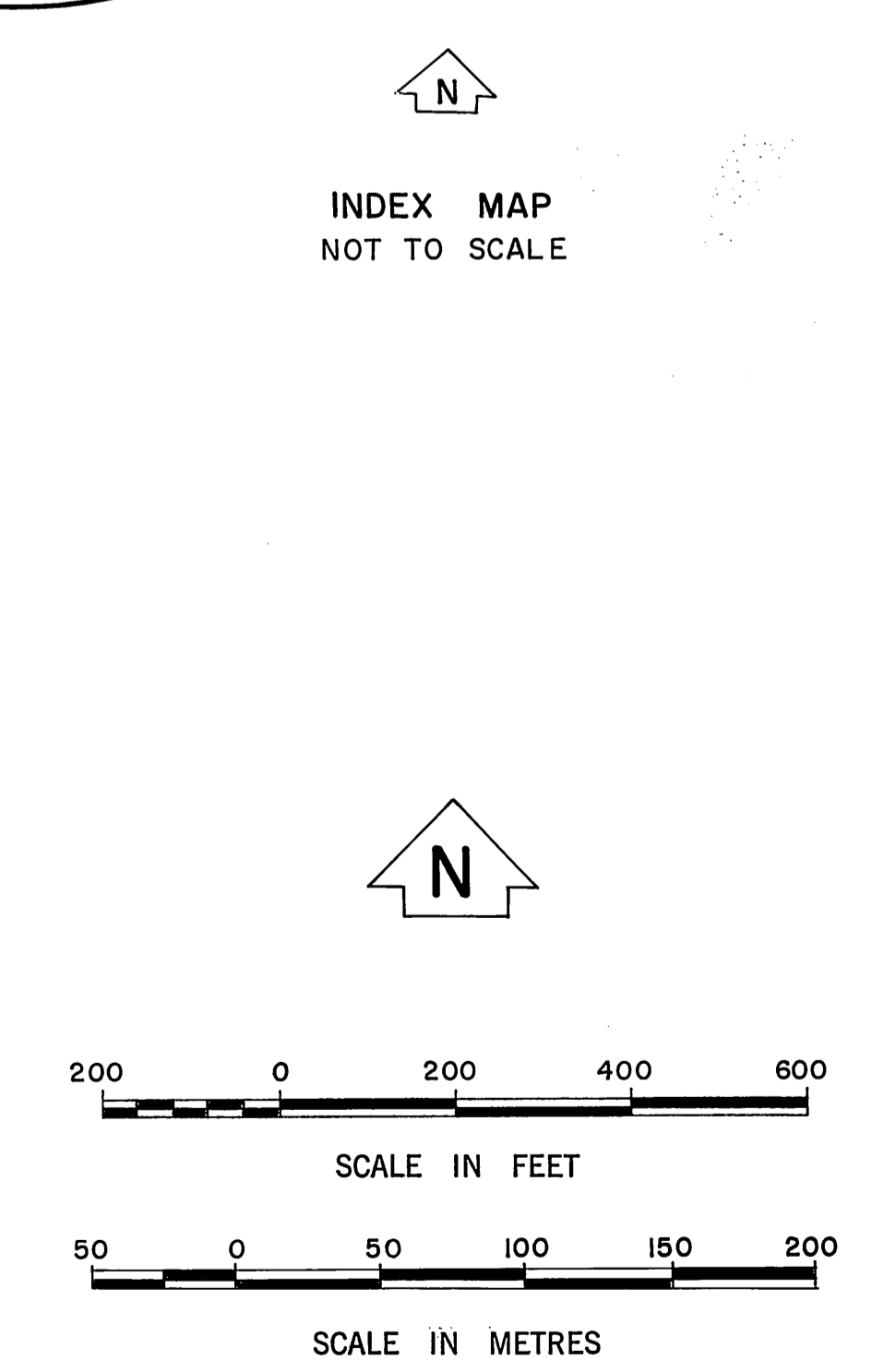
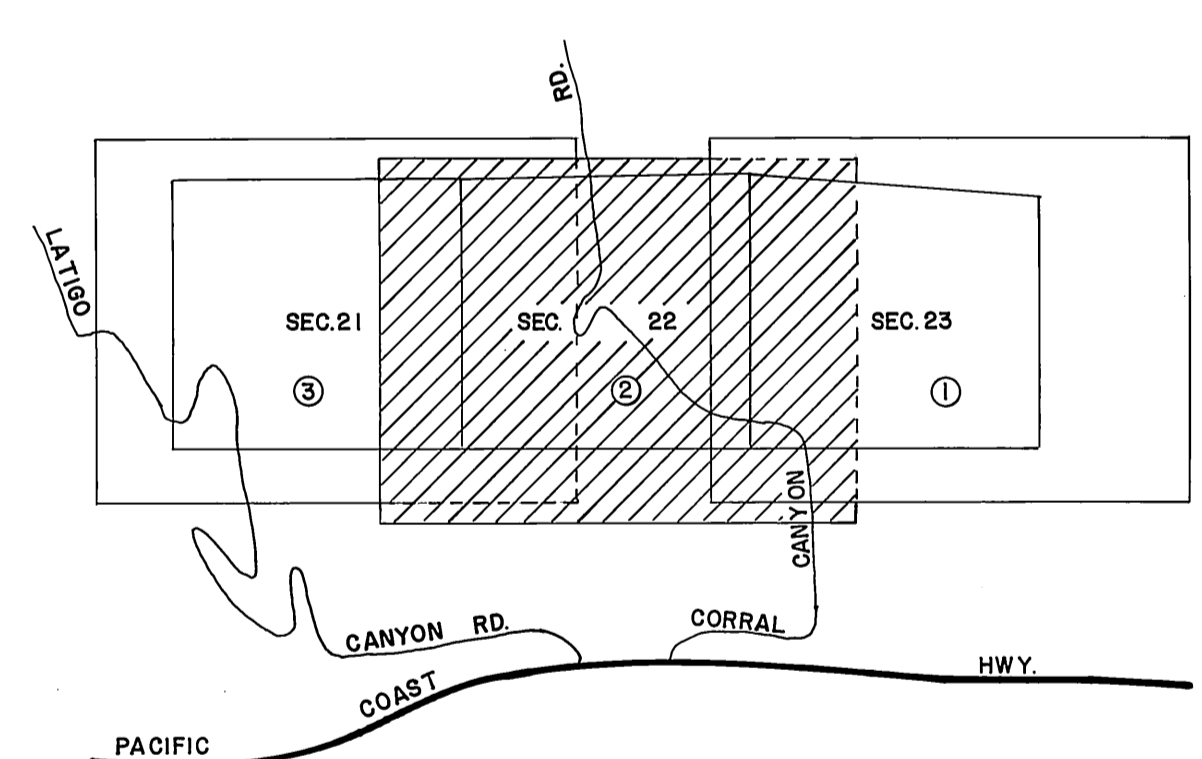
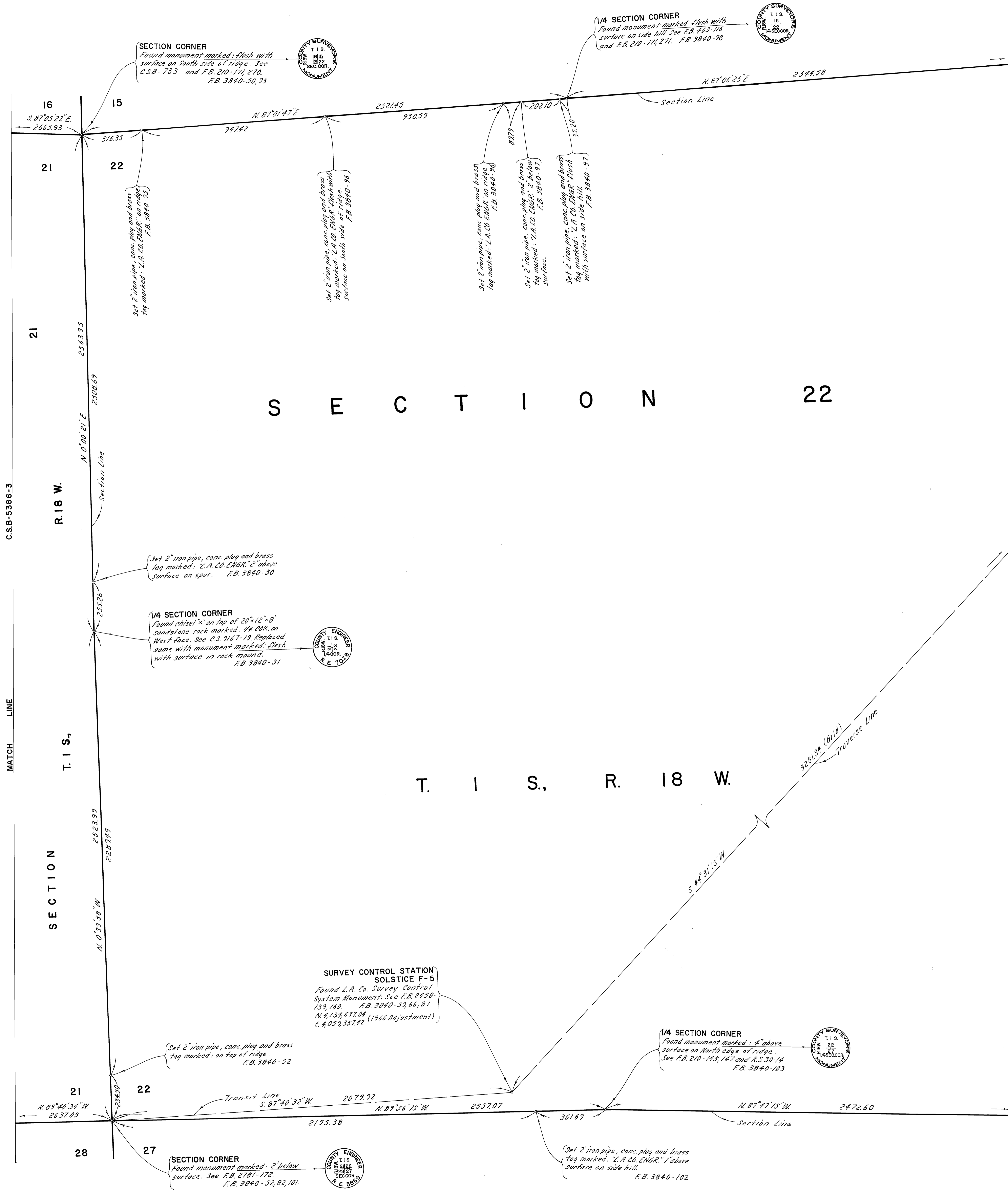


NOTE:
 THIS MAP WAS FILED FOR THE PURPOSE OF ESTABLISHING SECTION LINES. ALL OTHER CADASTRAL DATA HAS BEEN OMITTED.

COUNTY OF LOS ANGELES DEPARTMENT OF COUNTY ENGINEER-FACILITIES STEPHEN J. KOONCE-COUNTY ENGINEER PREPARED BY SURVEY DIVISION RICHARD J. MITCHELL-DIVISION ENGINEER C.K. LIND, R. F. JACKSON SURVEYED BY L.V. SMITH, M.E. WACKER CHECKED BY D. SAPPPELL DRAWN BY G. MASUDA	MAP OF SECTIONS 21, 22 & 23 T. I. S., R. 18 W., S. B. M.		COUNTY SURVEYOR'S MAP NO. B-5386 SHEET 1 OF 3 SHEETS FILED: April 12, 1980 DEPT. COUNTY ENGINEER SURVEYED AUG. 1973 REFERENCE F.B. 3840	REVISION NO. BY DATE
	BASIS OF BEARINGS CALIFORNIA COORDINATE SYSTEM, ZONE 7			JOB NUMBER 0302.01 INDEX MAP NO. 91 & 92
	COUNTY SURVEYOR'S MAP NO. B-5386			

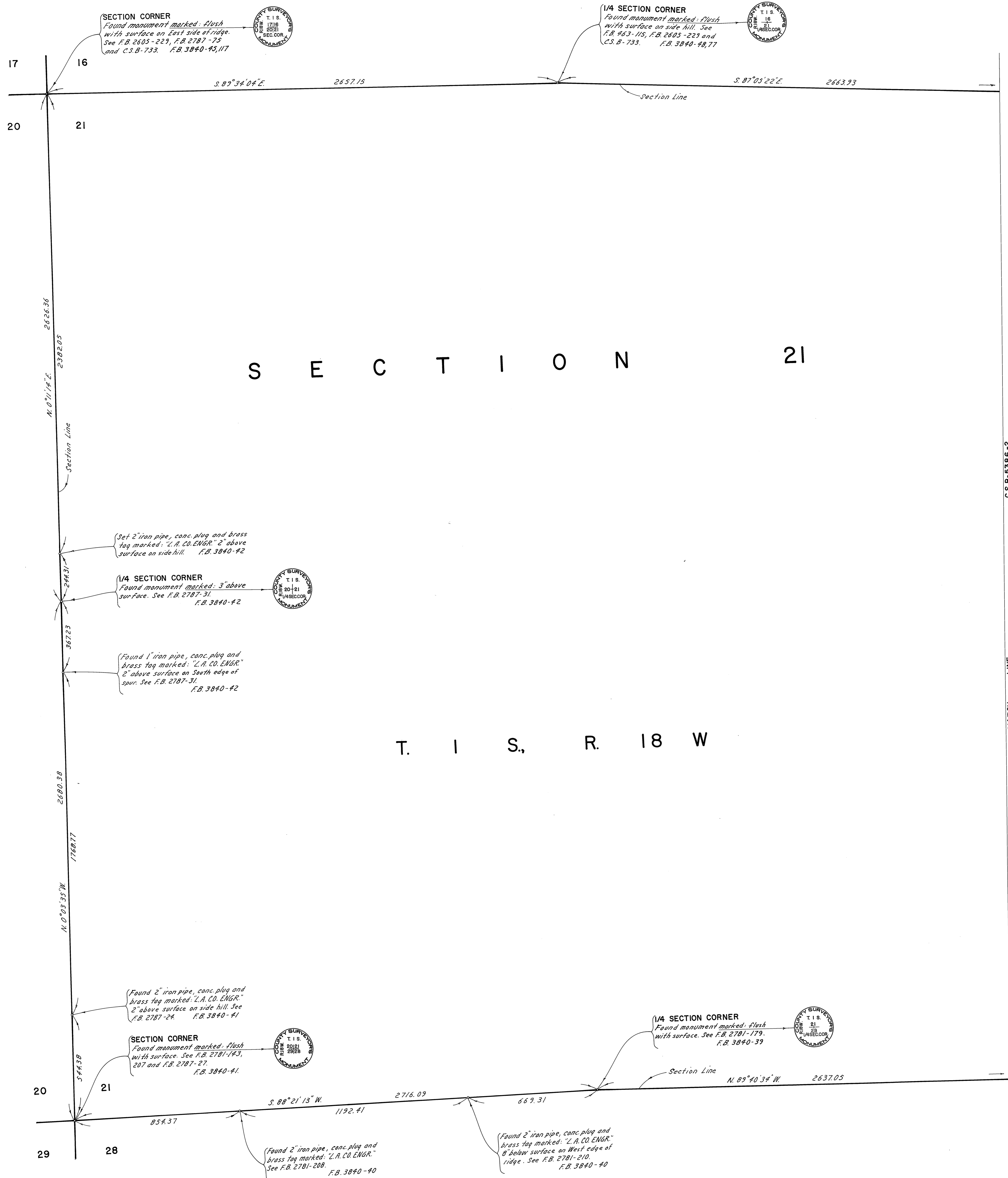
C 2 B - 5386 - S



NOTE:
THIS MAP WAS FILED FOR THE PURPOSE OF
ESTABLISHING SECTION LINES. ALL OTHER
CADASTRAL DATA HAS BEEN OMITTED.

COUNTY OF LOS ANGELES DEPARTMENT OF COUNTY ENGINEER-FACILITIES STEPHEN J. KOONCE-COUNTY ENGINEER PREPARED BY SURVEY DIVISION RICHARD J. MITCHELL-DIVISION ENGINEER C. K. LIND, G. R. JACKSON SURVEYED BY L. V. SMITH, M. E. WACKER CHECKED BY D. SAPPPELL DRAWN BY G. MASUDA	MAP OF SECTIONS 21, 22 & 23 T. I. S., R. 18 W., S.B.M.		COUNTY SURVEYOR'S MAP NO. B-5386 SHEET 2 OF 3 SHEETS FILED <i>[Signature]</i> 19 82 DEPUTY SURVEYED AUG. 1973 REFERENCE F. B. 3840		REVISION NO. BY DATE
	BASIS OF BEARINGS CALIFORNIA COORDINATE SYSTEM, ZONE 7			JOB NUMBER 0302.01	INDEX MAP NO. 91 & 92
	COUNTY ENGINEER T. I. S. R. 18 W. S. B. M.				
	COUNTY ENGINEER T. I. S. R. 18 W. S. B. M.				

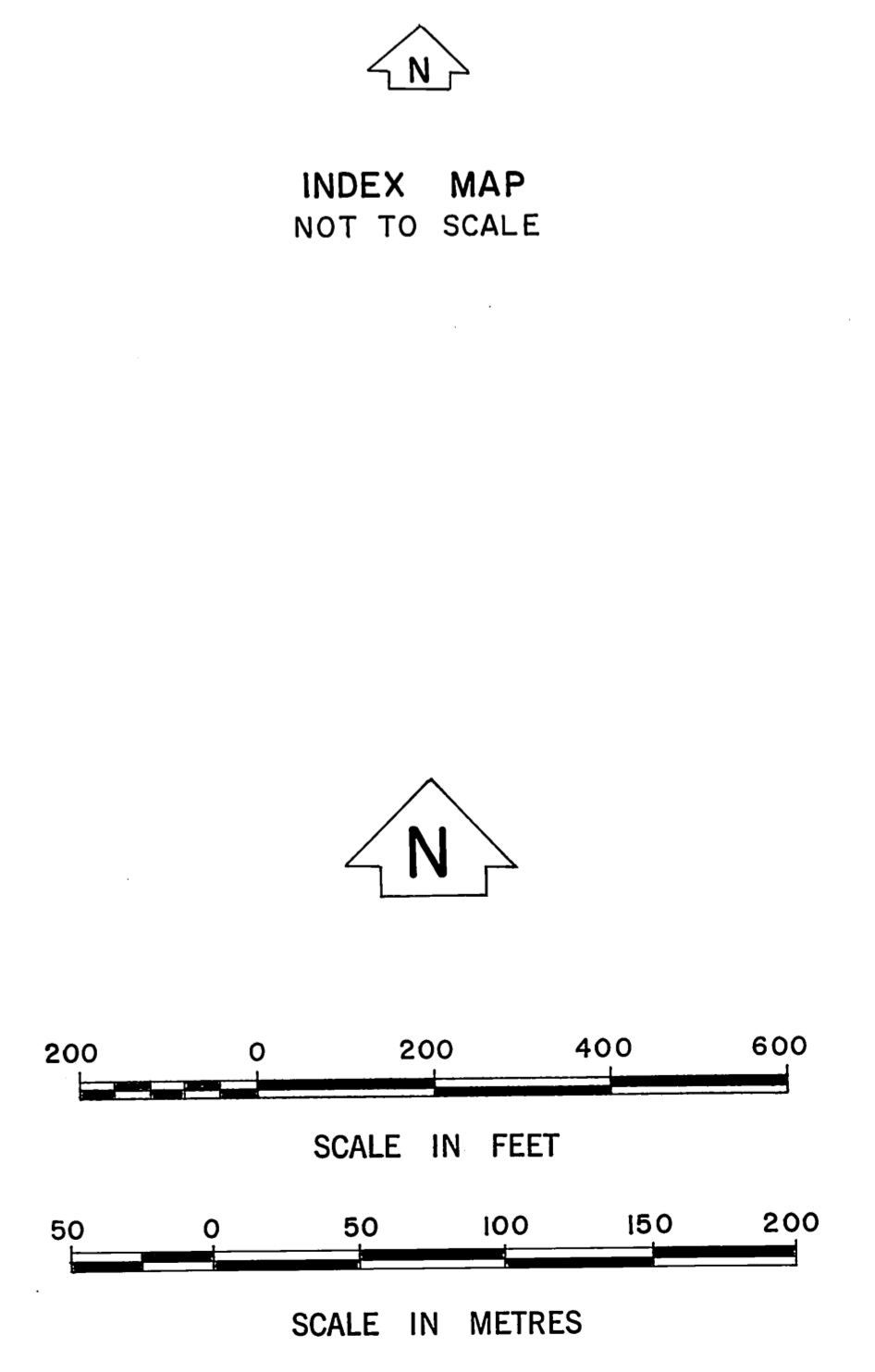
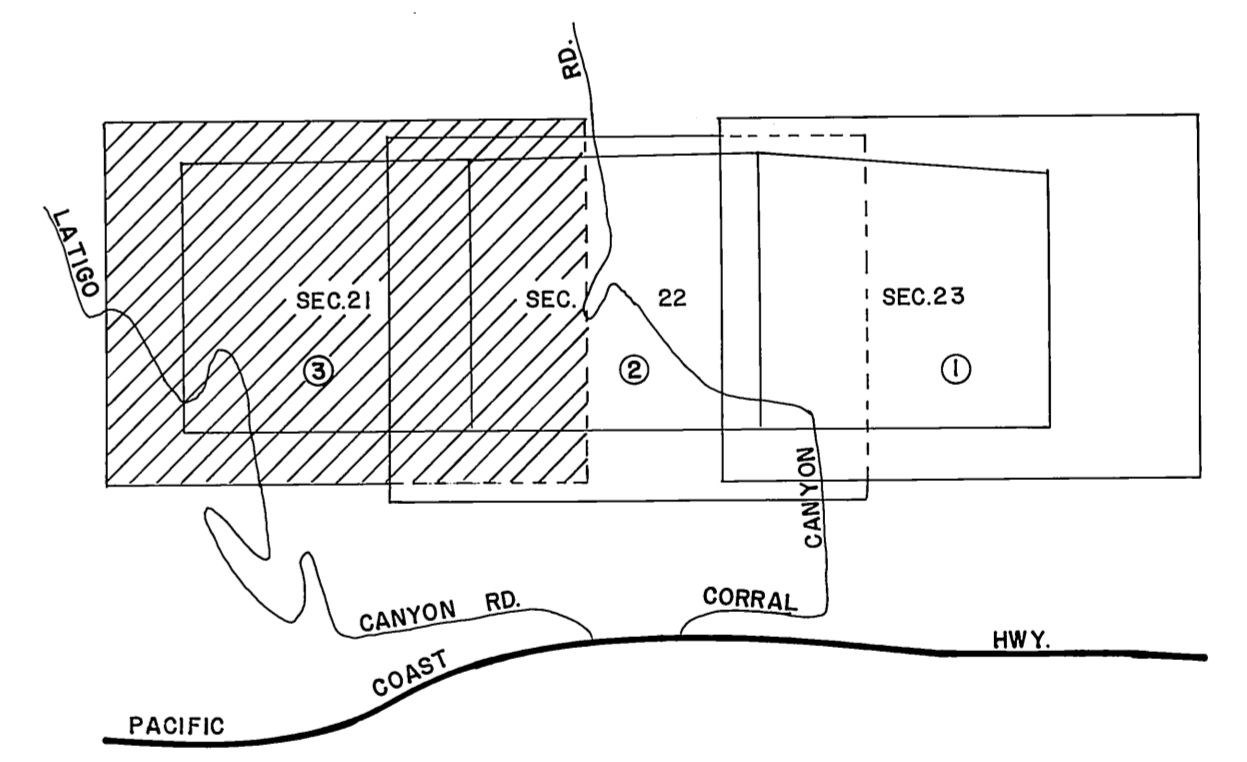
C 2 B - 5386 - S



S E C T I O N 21

T. I. S., R. 18 W

MATCH LINE C.S.B-5386-2



NOTE:
THIS MAP WAS FILED FOR THE PURPOSE OF
ESTABLISHING SECTION LINES. ALL OTHER
CADASTRAL DATA HAS BEEN OMITTED.

COUNTY OF LOS ANGELES DEPARTMENT OF COUNTY ENGINEER-FACILITIES STEPHEN J. KOONCE-COUNTY ENGINEER PREPARED BY SURVEY DIVISION RICHARD J. MITCHELL-DIVISION ENGINEER C.K. LIND, B.R. JACKSON SURVEYED BY L.V. SMITH, M.E. WACKER CHECKED BY D. SAPPPELL DRAWN BY G. MASUDA	MAP OF SECTIONS 21, 22 & 23 T. I. S., R. 18 W., S.B.M.		COUNTY SURVEYOR'S MAP NO. B-5386 SHEET 3 OF 3 SHEETS FILED: <i>April 16, 1980</i> DEPUTY SURVEYED AUG. 1973 REFERENCE F. B. 3840		REVISION NO. BY DATE
	BASIS OF BEARINGS CALIFORNIA COORDINATE SYSTEM, ZONE 7		JOB NUMBER 0302-01	INDEX MAP NO. 91 & 92	