

SECTION CORNER  
Found 2" iron pipe set in conc.,  
with brass cap marked, per  
F.B. 116-9, F.B. 482-94,  
F.B. 517-263.

1/4 SECTION CORNER  
Found 2" iron pipe in conc.  
with brass cap marked,  
per F.B. 482-94,  
F.B. 517-239, 252, 259.

SECTION CORNER  
Found 2" iron pipe, set in  
conc. with brass cap marked,  
per F.B. 482-94,  
F.B. 517-241, 252, 259.

1/4 SECTION CORNER  
By proportion 1/2 mile north  
and 1/2 mile south. Set 2"  
iron pipe in conc. with brass  
cap marked, per C.S. 9288-2,  
F.B. 517-262.

CENTER OF SECTION  
Set 2" iron pipe in conc.  
with brass cap marked,  
by intersection,  
F.B. 517-263.

1/4 SECTION CORNER  
Found mound of rock on line  
of trees and streets South.  
Replaced mound with 2" iron  
pipe set in conc. with brass  
cap marked,  
F.B. 517-241, 252.

SECTION CORNER  
Found old redwood 2x2 stake  
by ties per F.B. 112-65, with  
6"x6" conc. monument under.  
Replaced monument with 2"  
iron pipe set in conc. with  
brass cap marked,  
F.B. 517-241, 242, 243, 252.

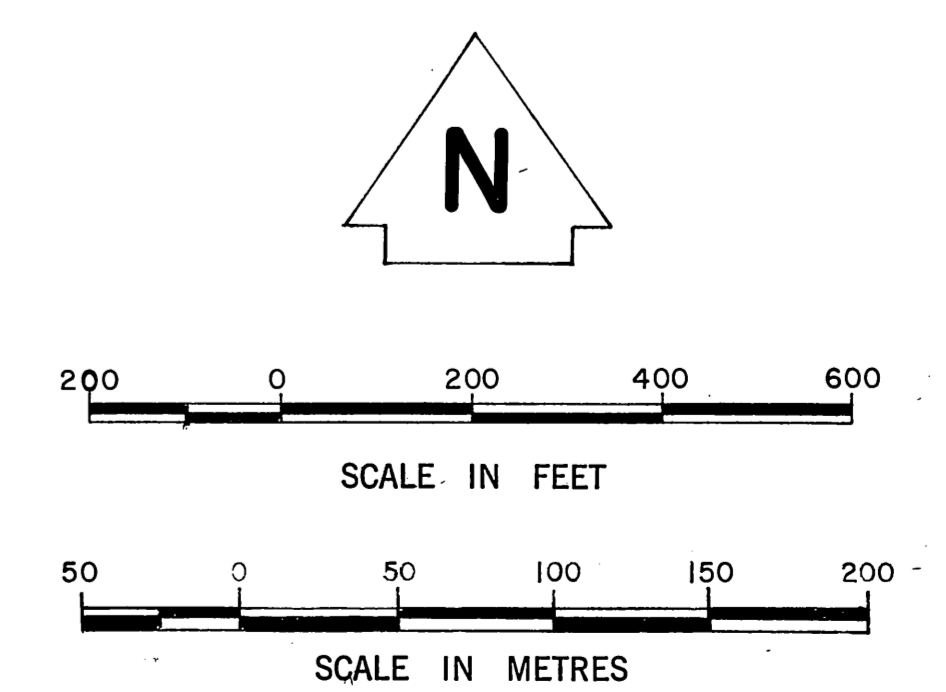
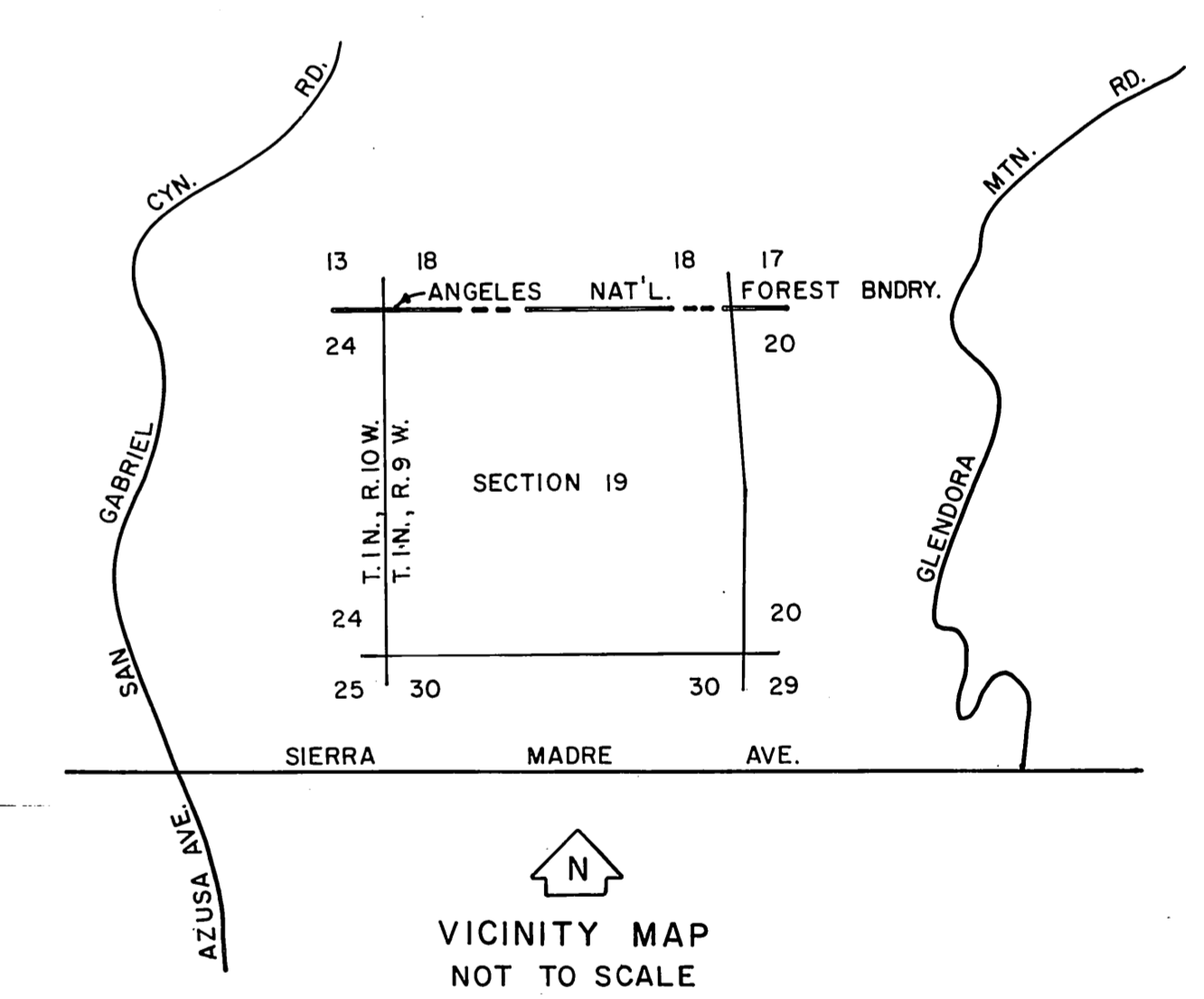
SECTION CORNER  
Found bottle tree, per  
F.B. 116-9,  
F.B. 517-248, 261, 262.

WITNESS CORNER  
Set 2" iron pipe in conc.  
with brass cap marked,  
F.B. 517-248, 261, 262.

WITNESS CORNER  
Set 2" iron pipe in conc.  
with brass cap marked,  
F.B. 517-248, 261, 262.

1/4 SECTION CORNER  
Set 2" iron pipe in conc.  
with brass cap marked,  
by proportion 1/2 mile East  
and 1/2 mile West  
F.B. 517-244.

NOTE:  
THIS MAP WAS FILED FOR THE PURPOSE OF  
ESTABLISHING SECTION LINES. ALL OTHER  
CADASTRAL DATA HAS BEEN OMITTED.



COUNTY OF LOS ANGELES DEPARTMENT OF COUNTY ENGINEER-FACILITIES STEPHEN J. KOONCE-COUNTY ENGINEER PREPARED BY SURVEY DIVISION RICHARD J. MITCHELL-DIVISION ENGINEER SURVEYED BY - A.N. HELLSTROM CHECKED BY - W. MOODYMAN DRAWN BY - B. GOINS	MAP OF <b>SECTION 19</b> <b>T.1N., R.9W. S.B.M.</b>		COUNTY SURVEYOR'S MAP NO. <b>B-5388</b>	REVISION NO. BY DATE	
	BASIS OF BEARINGS THE NORTH LINE OF SECTION 19 T.1N., R.9 W. (N.89°44'30"W.) AS SHOWN ON C.S.B. 1085.		SHEET 1 OF 1 SHEET FILED: <i>March 2, 1936</i> <i>R.J. Mitchell</i> DEPUTY	SURVEYED FEB. 1936 REFERENCE F.B. 517	
			JOB NUMBER 0302.01	INDEX MAP NO. 14.	