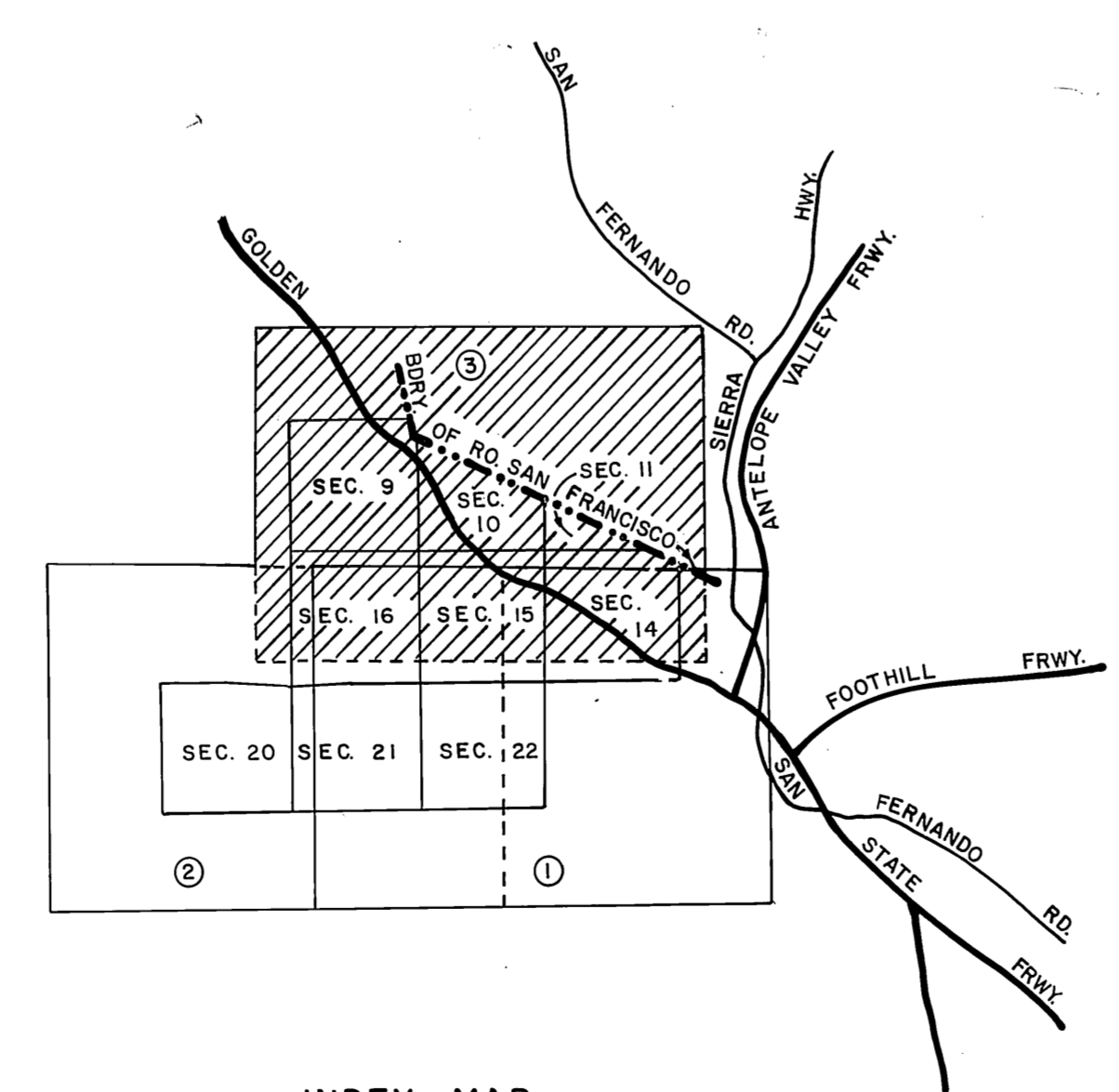
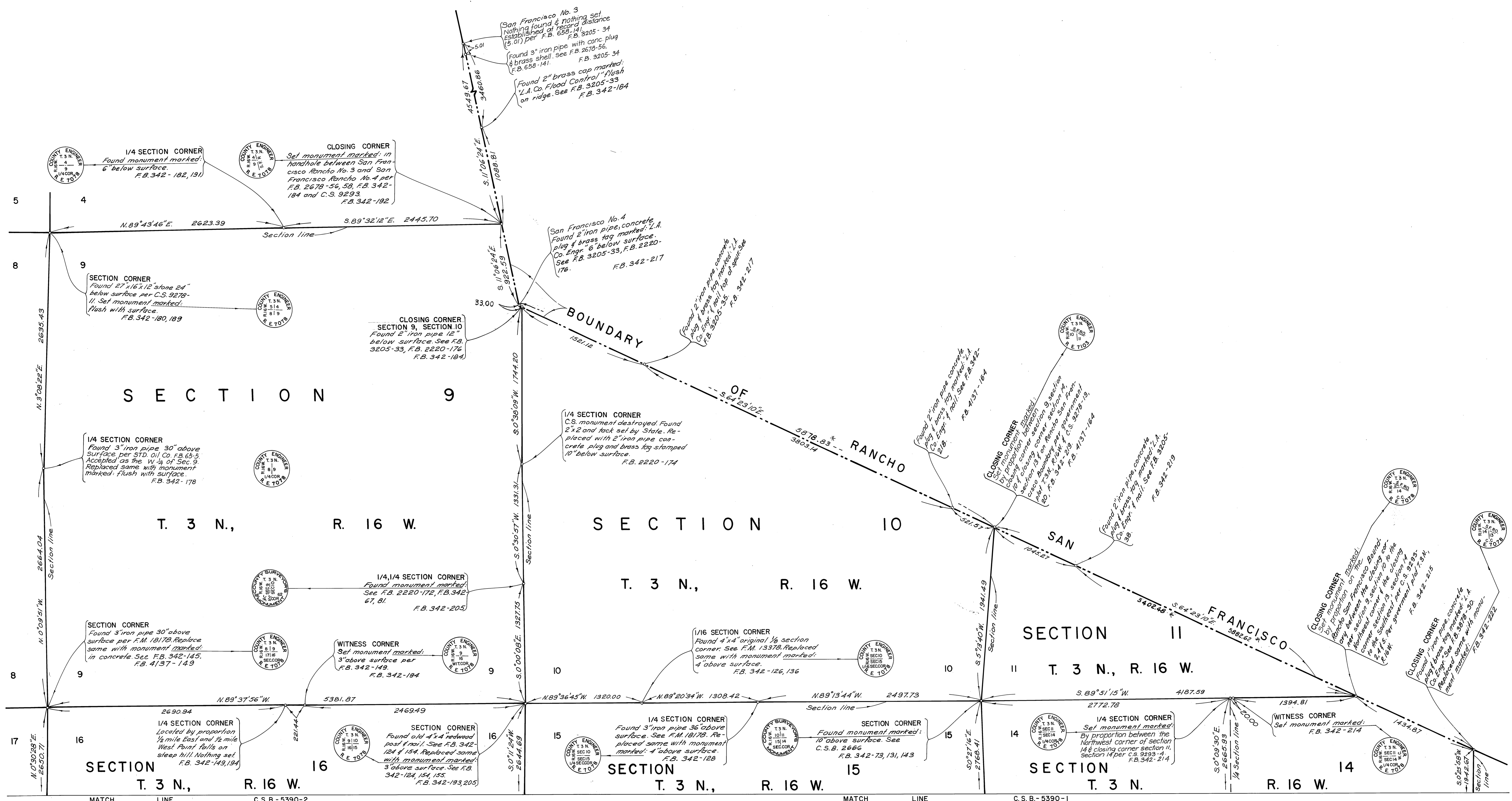
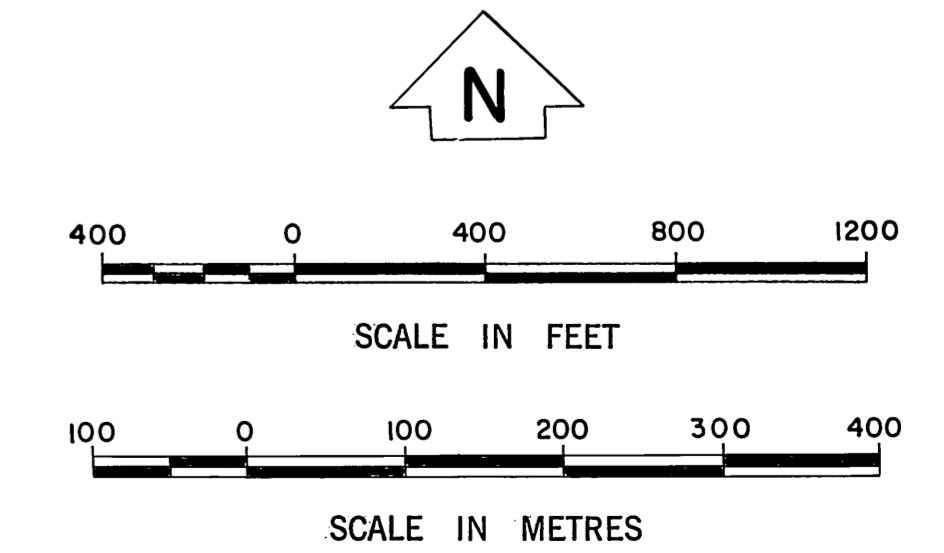


NOTE:  
THIS MAP WAS FILED FOR THE PURPOSE OF  
ESTABLISHING SECTION LINES. ALL OTHER  
CADASTRAL DATA HAS BEEN OMITTED.

COUNTY OF LOS ANGELES DEPARTMENT OF COUNTY ENGINEER-FACILITIES STEPHEN J. KOONCE-COUNTY ENGINEER PREPARED BY SURVEY DIVISION RICHARD J. MITCHELL-DIVISION ENGINEER J.C. PIERCE, SURVEYED BY C. L. WRIGHT, J.S. COATES CHECKED BY J. NOCUM DRAWN BY C. L. VILLALUNA	MAP OF <b>SECTIONS 9, 10, 11,          14, 15, 16, 20, 21, &amp; 22,</b> T. 3 N., R. 16 W., S.B.M.		COUNTY SURVEYOR'S MAP NO. <b>B-5390</b> SHEET 2 OF 3 SHEETS FILED: <i>11/24/11</i> , 19 <i>81</i> <i>10/1/11</i> DEPUTY	REVISION NO. BY DATE
	BASIS OF BEARINGS CALIFORNIA COORDINATE SYSTEM ZONE 7		SURVEYED AUGUST 1971	
			REFERENCE F. B. 342, F. B. 4137	
			JOB NUMBER 0302.01	INDEX MAP NO. 62 & 63



\* INDICATES DISTANCES CORRECTED ALONG THE BOUNDARY OF RANCHO SAN FRANCISCO 5-16-1985



NOTE: THIS MAP WAS FILED FOR THE PURPOSE OF ESTABLISHING SECTION LINES. ALL OTHER CADASTRAL DATA HAS BEEN OMITTED.

COUNTY OF LOS ANGELES DEPARTMENT OF COUNTY ENGINEER-FACILITIES STEPHEN J. KOONCE-COUNTY ENGINEER PREPARED BY SURVEY DIVISION RICHARD J. MITCHELL-DIVISION ENGINEER U.C. PIERCE, SURVEYED BY C. L. WRIGHT, J.S. COATES CHECKED BY J. NOCUM DRAWN BY C. L. VILLALUNA	MAP OF <b>SECTIONS 9, 10, 11,          14, 15, 16, 20, 21, &amp; 22,          T. 3 N., R. 16 W., S.B.M.</b>		COUNTY SURVEYOR'S MAP NO. <b>B-5390</b> SHEET 3 OF 3 SHEETS FILED: <i>March 31, 1987</i> <i>03/31/87</i> DEPUTY SURVEYED AUGUST 1971 REFERENCE F. B. 342 F. B. 4137 F. B. 3878 JOB NUMBER 0302.01 INDEX MAP NO. 62 & 63		REVISION NO. BY DATE
	BASIS OF BEARINGS CALIFORNIA COORDINATE SYSTEM ZONE 7				