

SECTION 24

T 6 N

R 12 W

SECTION 19

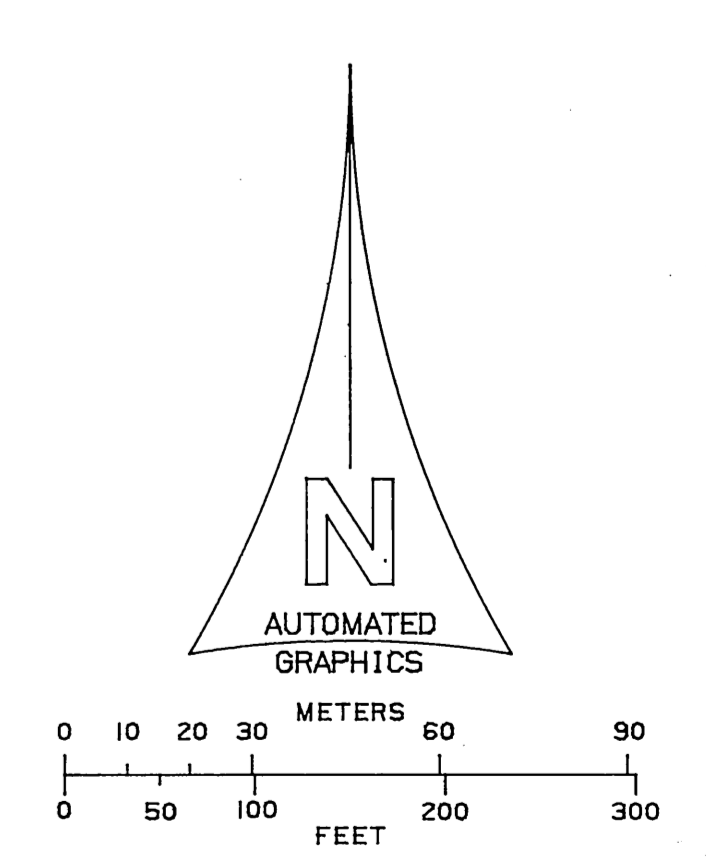
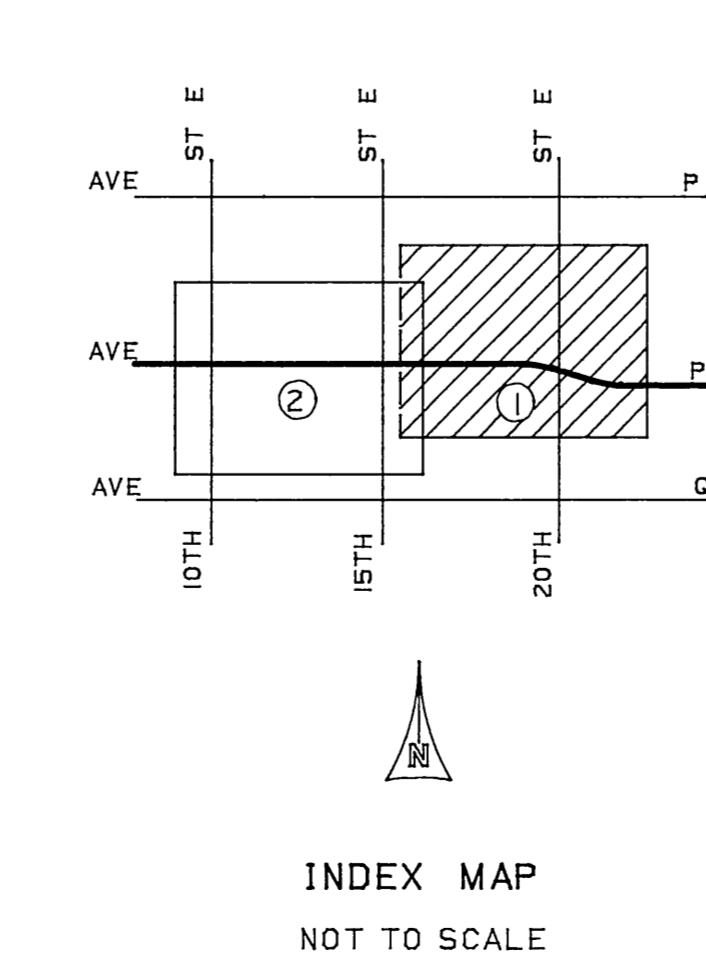
T 6 N

R 11 W

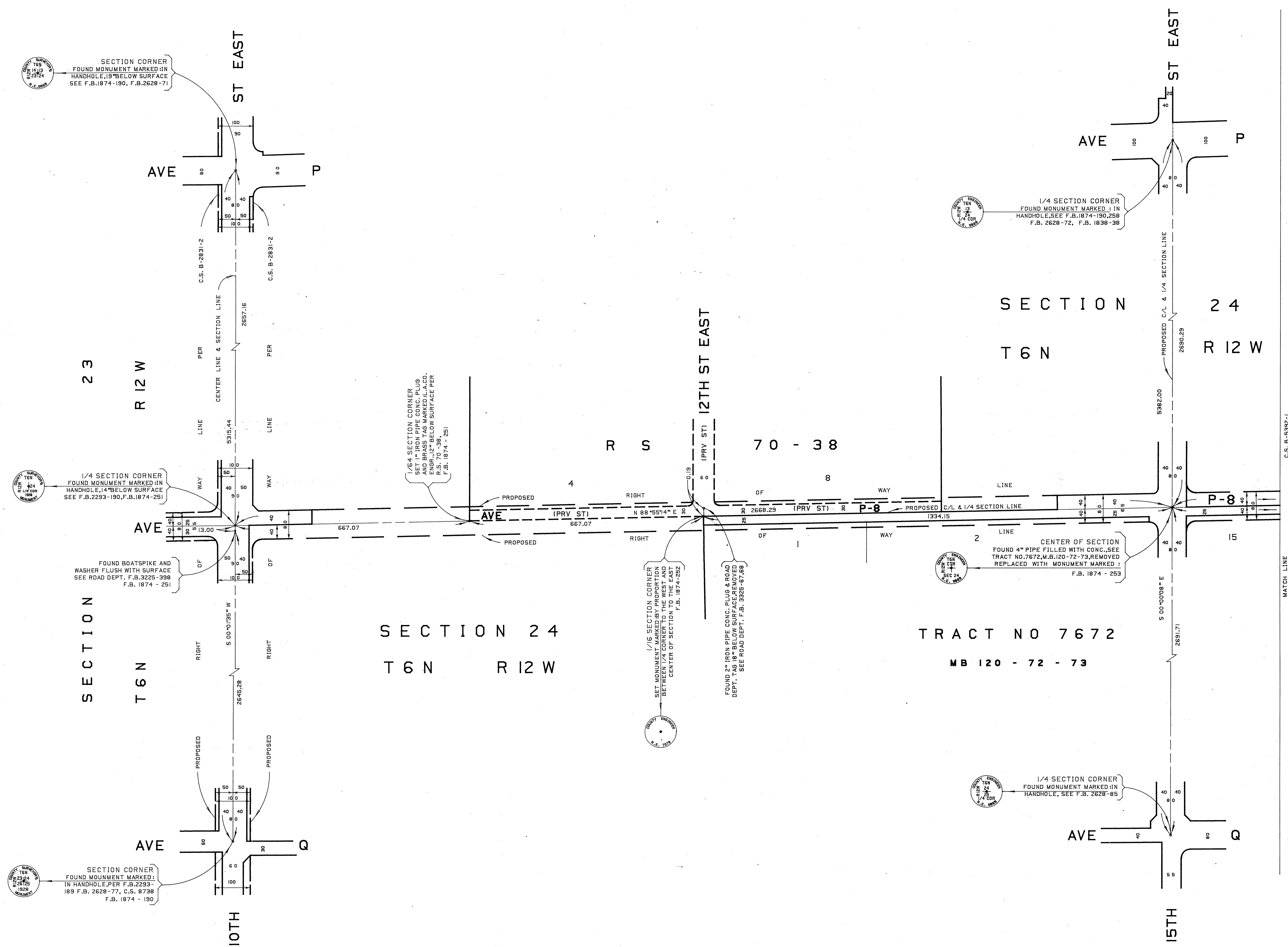
C.S. B-5392-2

TRACT NO 7672
MB 120 - 72 - 73

DETAIL "A"
NOT TO SCALE



COUNTY OF LOS ANGELES DEPARTMENT OF COUNTY ENGINEER PREPARED BY SURVEY DIVISION RICHARD J. MITCHELL - DIVISION ENGINEER SURVEYED BY <u>J.S. COATES</u> CHECKED BY <u>B. GOINS</u> DRAWN BY <u>E.W. FONG</u>	ALIGNMENT MAP OF AVENUE P-8 FROM 20TH ST EAST TO 10TH ST EAST BASIS OF BEARINGS THE CENTERLINE OF 20TH ST. EAST (S00°03'00"E) AS SHOWN ON C.S. B-1595	COUNTY SURVEYOR'S MAP NO B-5392 SHEET 1 OF 2 SHEETS FILED: <u>[Signature]</u> 2-13-82 DEPUTY SURVEYED MAR. 1972 REFERENCE F.B. 1874 F.B. 811 JOB NUMBER 0208.21 INDEX MAP NO 65	REVISION NO BY DATE



SECTION CORNER
FOUND MONUMENT MARKED IN
HANDHOLE, 19\"/>

1/4 SECTION CORNER
FOUND MONUMENT MARKED IN
HANDHOLE, 14\"/>

FOUND BOATSPIKE AND
WASHER FLUSH WITH SURFACE
SEE ROAD DEPT. F.B. 3225-398
F.B. 1874 - 251

1/64 SECTION CORNER
SET 1\"/>

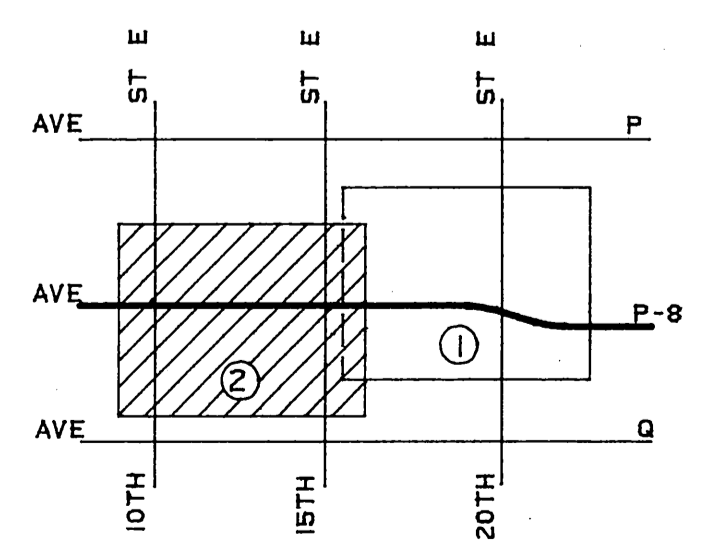
1/16 SECTION CORNER
SET MONUMENT MARKED BY PROPORTION
BETWEEN 1/16\"/>

FOUND 2\"/>

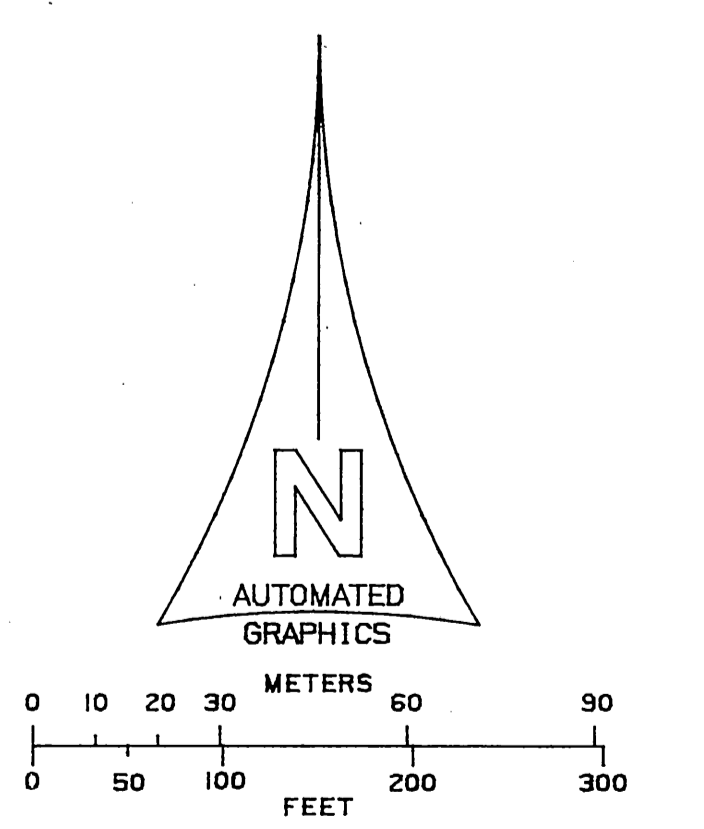
1/4 SECTION CORNER
FOUND MONUMENT MARKED IN
HANDHOLE, SEE F.B. 1874-190, 258
F.B. 2628-72, F.B. 1838-38

CENTER OF SECTION
FOUND 4\"/>

1/4 SECTION CORNER
FOUND MONUMENT MARKED IN
HANDHOLE, SEE F.B. 2628-85



INDEX MAP
NOT TO SCALE



COUNTY OF LOS ANGELES DEPARTMENT OF COUNTY ENGINEER PREPARED BY SURVEY DIVISION RICHARD J. MITCHELL - DIVISION ENGINEER SURVEYED BY J.S. COATES CHECKED BY B. GOINS DRAWN BY E.W. FONG	ALIGNMENT MAP OF AVENUE P-8 FROM 20TH ST EAST TO 10TH ST EAST BASIS OF BEARINGS THE CENTERLINE OF 20TH ST. EAST (S 00° 03' 00" E) AS SHOWN ON C.S. B-1595	COUNTY SURVEYOR'S MAP NO B-5392 SHEET 2 OF 2 SHEETS FILED IN 1972 SURVEYED MAR. 1972 REFERENCE F.B. 1874 F.B. 811 JOB NUMBER 0208.21 INDEX MAP NO 65	REVISION NO BY DATE
		COUNTY SURVEYOR'S MAP NO B-5392 SHEET 2 OF 2 SHEETS FILED IN 1972 SURVEYED MAR. 1972 REFERENCE F.B. 1874 F.B. 811 JOB NUMBER 0208.21 INDEX MAP NO 65	REVISION NO BY DATE