

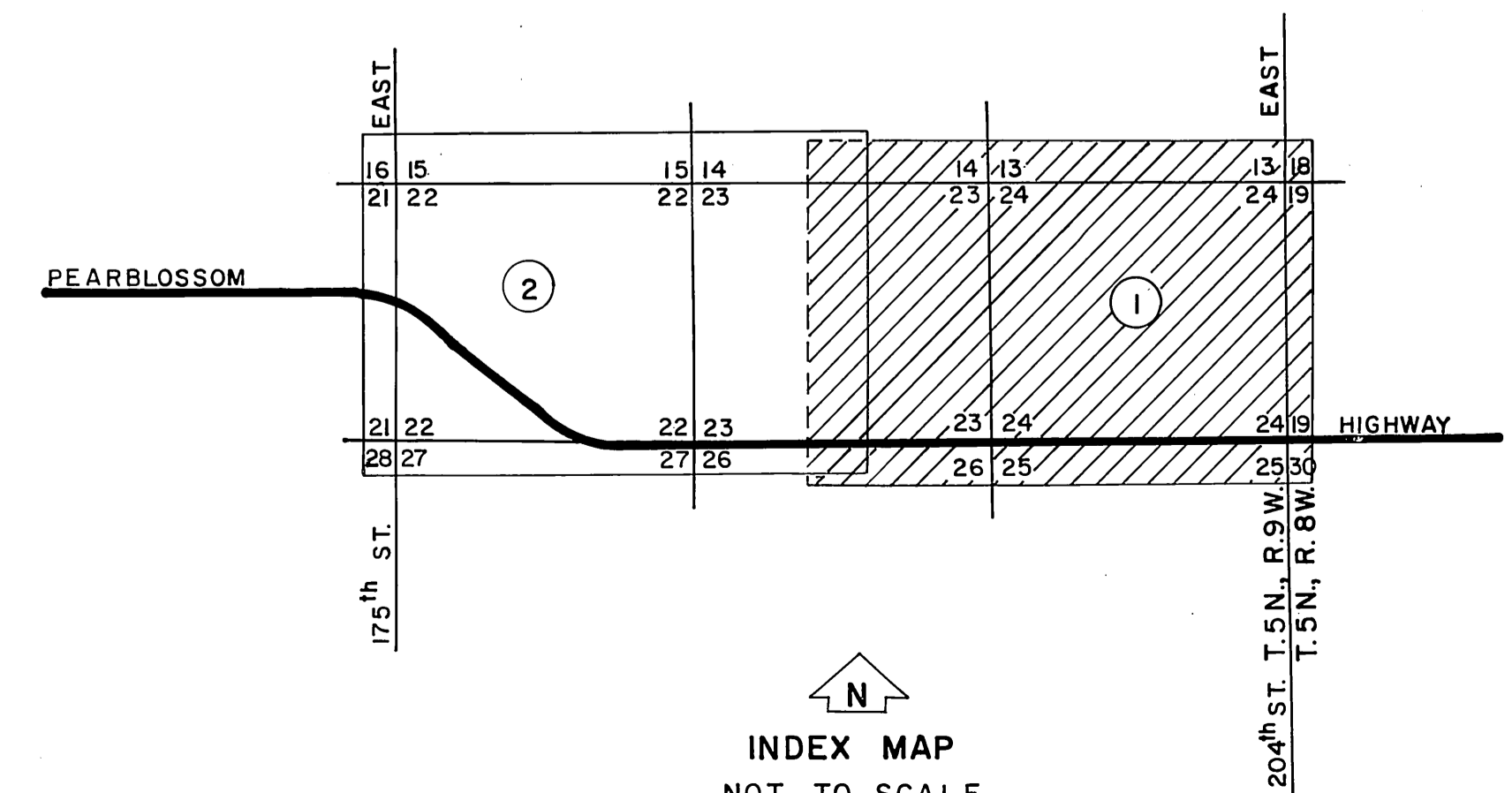
SECTION 23

SECTION 24

T.5 N., R.9 W.

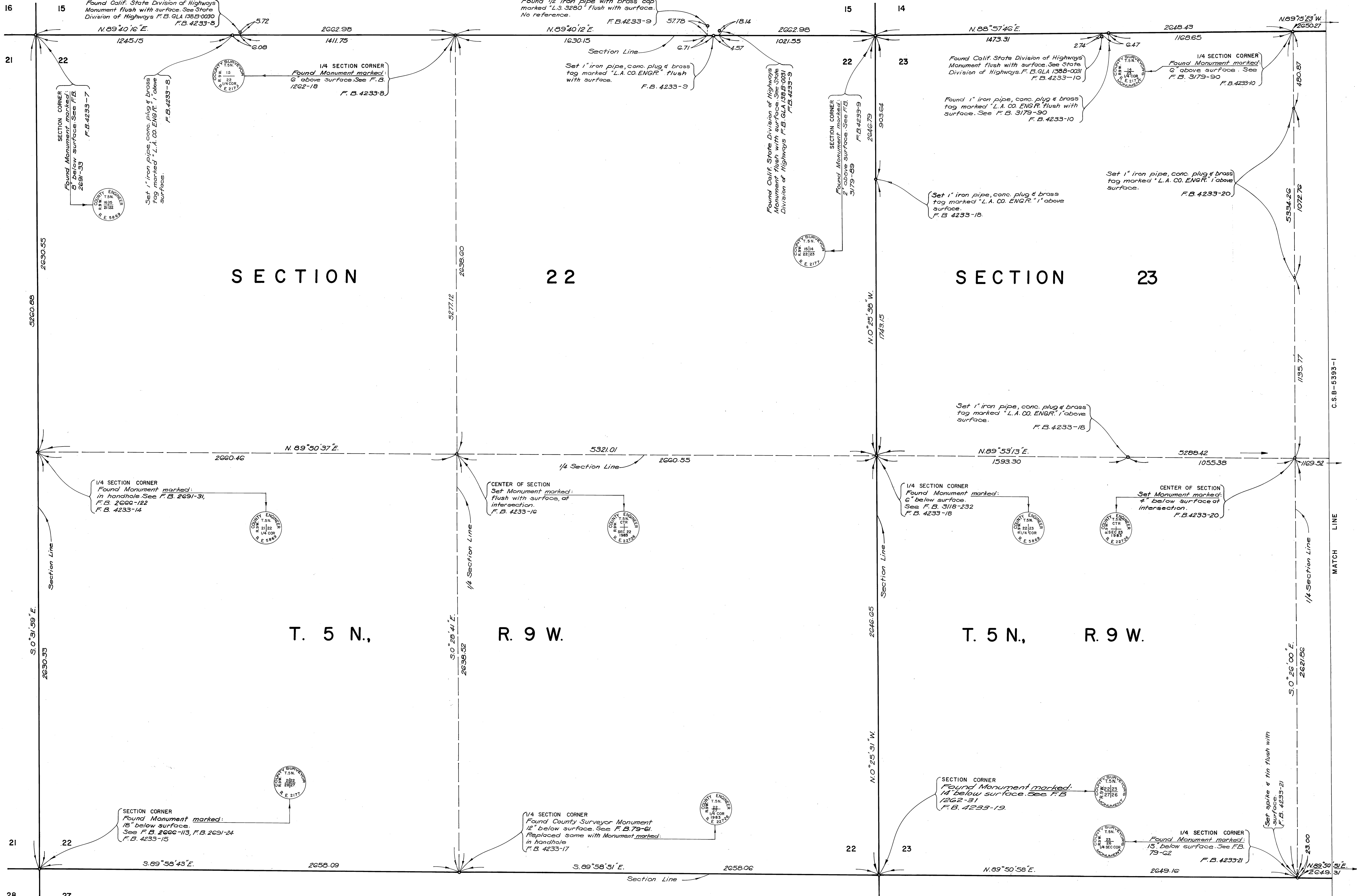
T.5 N.,

R.9 W.



NOTE:  
 THIS MAP WAS FILED FOR THE PURPOSE OF  
 ESTABLISHING SECTION LINES. ALL OTHER  
 CADASTRAL DATA HAS BEEN OMITTED.

COUNTY OF LOS ANGELES DEPARTMENT OF COUNTY ENGINEER-FACILITIES STEPHEN J. KOONCE-COUNTY ENGINEER PREPARED BY SURVEY-LAND DEVELOPMENT DIVISION GIBSON PHELPS JR. ASSISTANT DEPUTY COUNTY ENGINEER SURVEYED BY J.R. COVEY CHECKED BY R. HILARIO DRAWN BY R.N. TELEBRICO	MAP OF <b>SECTIONS 22, 23 &amp; 24</b> T. 5 N., R. 9 W. S.B.M.		COUNTY SURVEYOR'S MAP NO. <b>B-5393</b> SHEET 1 OF 2 SHEETS FILED: <i>[Signature]</i> 1984 SURVEYED OCTOBER 1983 REFERENCE F.B. 4233	REVISION NO. BY DATE
	BASIS OF BEARINGS CALIFORNIA COORDINATE SYSTEM, ZONE 7			JOB NUMBER 0302.01 INDEX MAP NO. 294-337
	SCALE IN FEET 0 200 400 600 SCALE IN METRES 0 50 100 150 200			
	SURVEY CONTROL STATION MESCAL CREEK D-1 Found U.S. Geological Survey brass cap Monument set in conc. See F.B. 3854- 172. F.B. 4233-26 N. 4,294,315.90 (1970 Adjustment) E. 4,356,946.86			



SECTION 22

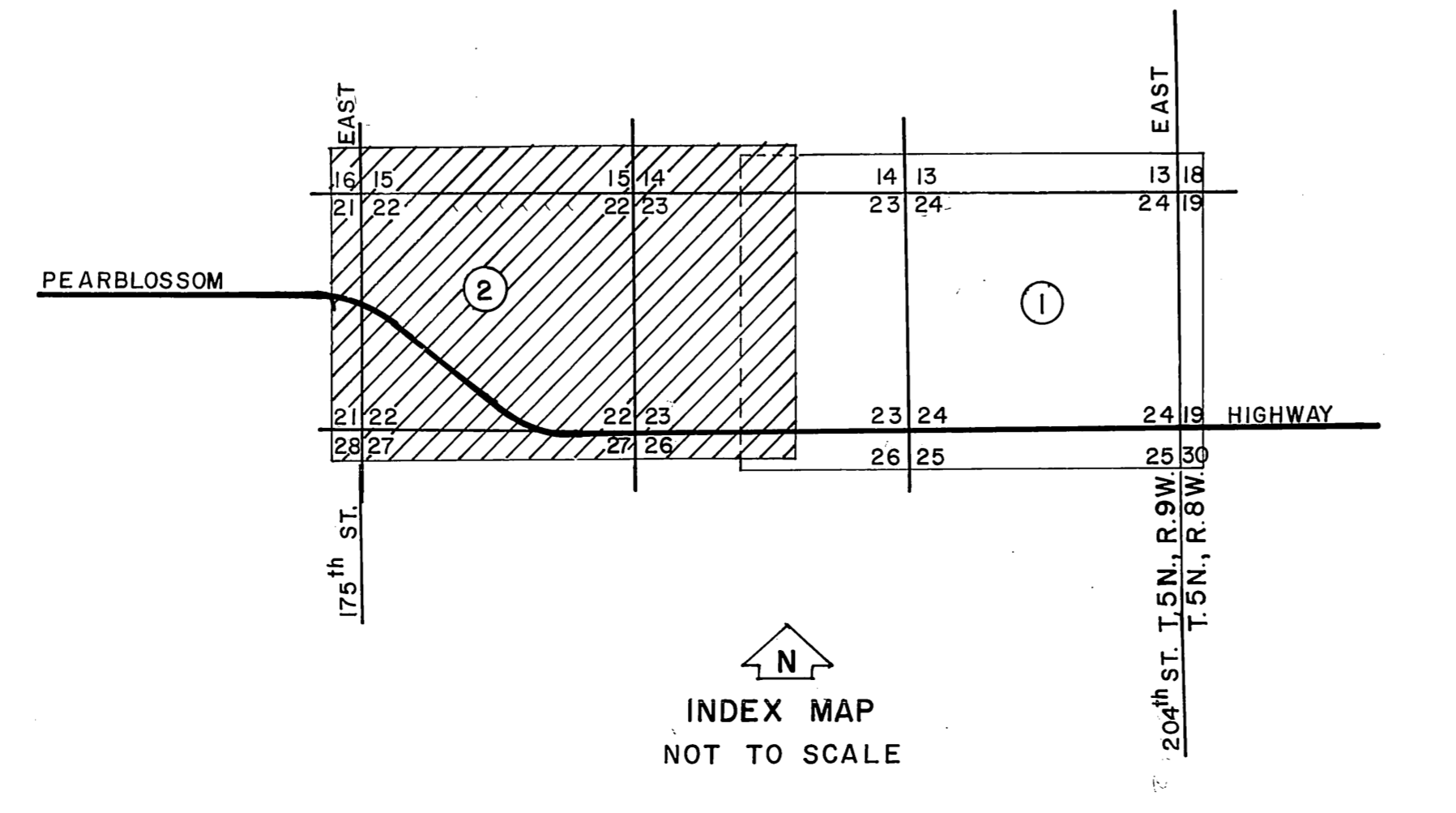
SECTION 23

T. 5 N.,

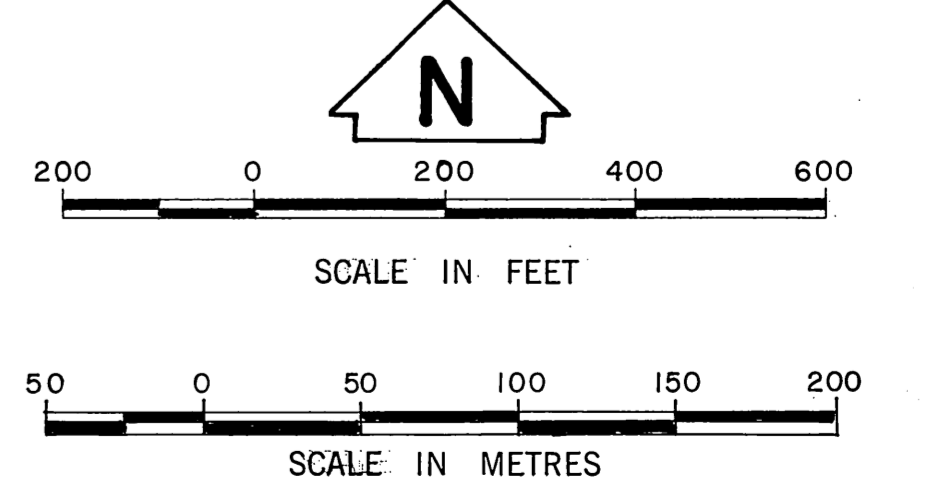
R. 9 W.

T. 5 N.,

R. 9 W.



NOTE:  
THIS MAP WAS FILED FOR THE PURPOSE OF  
ESTABLISHING SECTION LINES. ALL OTHER  
CADASTRAL DATA HAS BEEN OMITTED.



COUNTY OF LOS ANGELES DEPARTMENT OF COUNTY ENGINEER-FACILITIES STEPHEN J. KOONCE-COUNTY ENGINEER PREPARED BY SURVEY-LAND DEVELOPMENT DIVISION GIBSON PHELPS JR. ASSISTANT DEPUTY COUNTY ENGINEER SURVEYED BY J. R. COVEY CHECKED BY R. HILARIO DRAWN BY R. N. TELEBRICO	MAP OF <b>SECTIONS 22, 23 &amp; 24</b> <b>T. 5 N., R. 9 W. S.B.M.</b>		COUNTY SURVEYOR'S MAP NO. <b>B-5393</b> SHEET 2 OF 2 SHEETS FILED: [Signature] 1983 SURVEYED OCTOBER 1983 REFERENCE F.B. 4233		REVISION NO. BY DATE	
	BASIS OF BEARINGS CALIFORNIA COORDINATE SYSTEM, ZONE 7			JOB NUMBER 0302.01	INDEX MAP NO. 294-337	