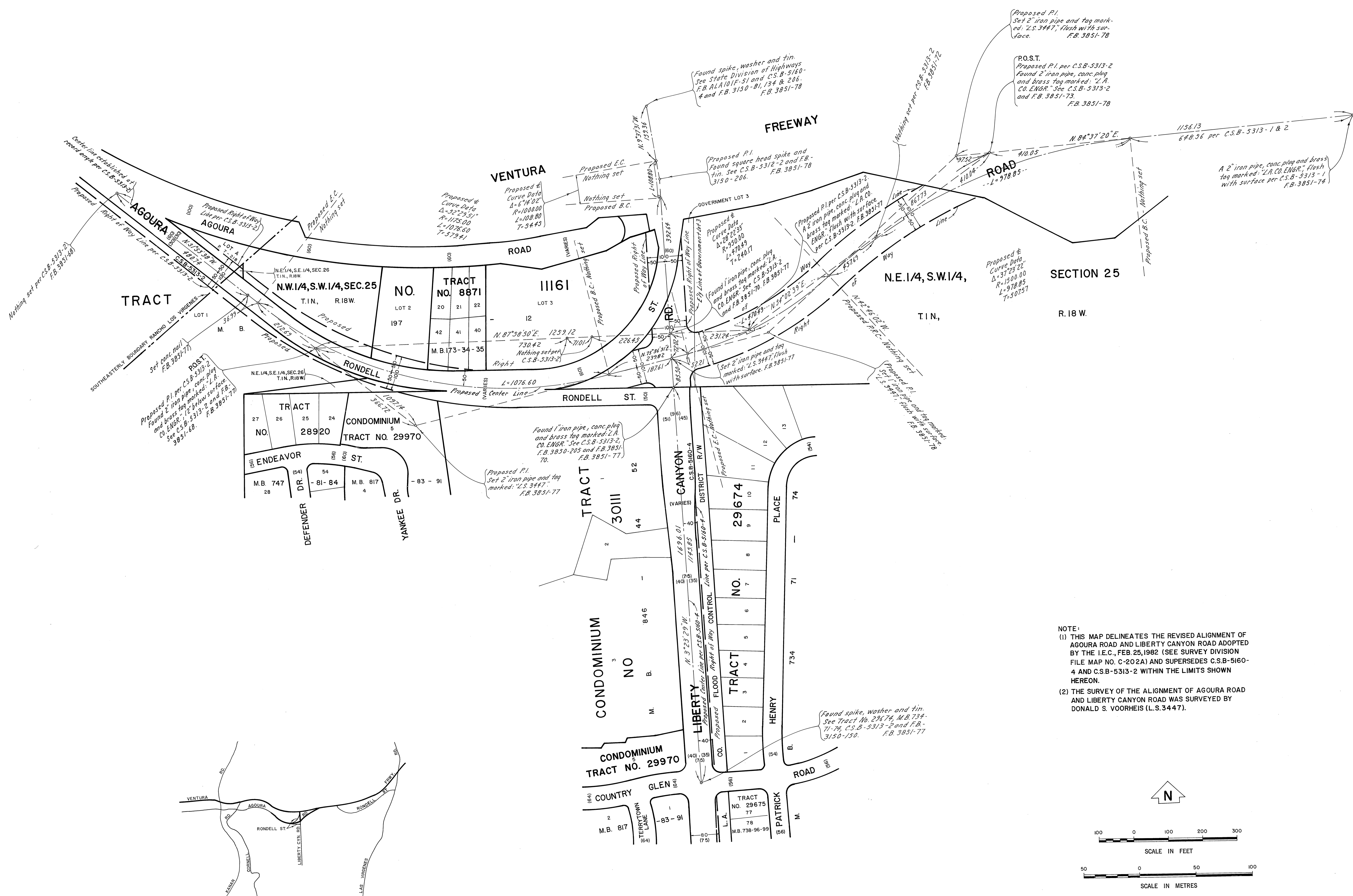
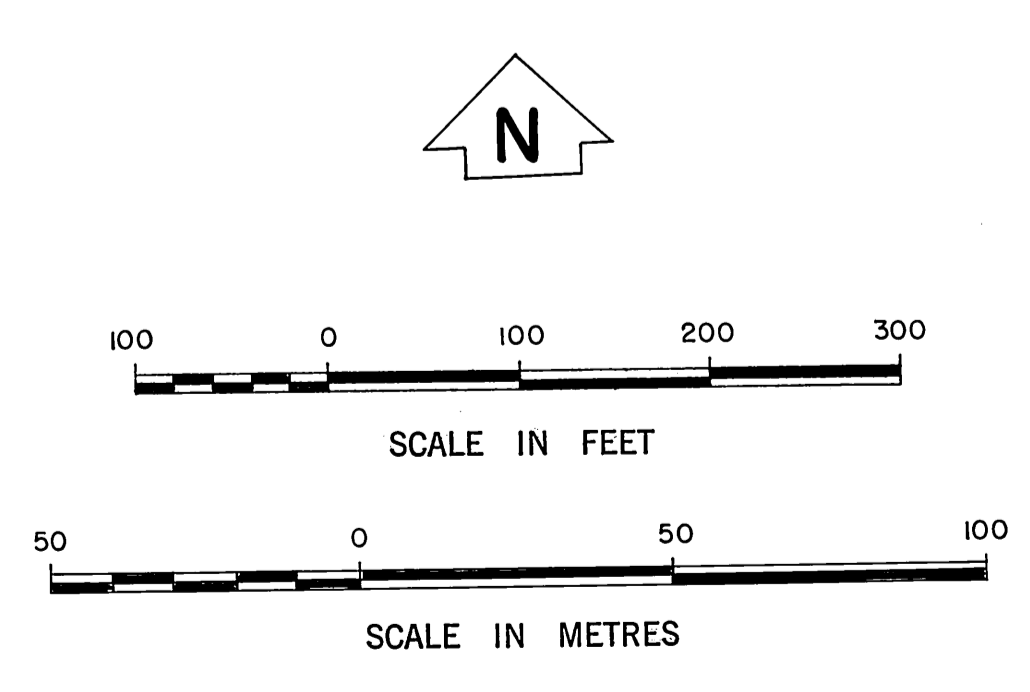
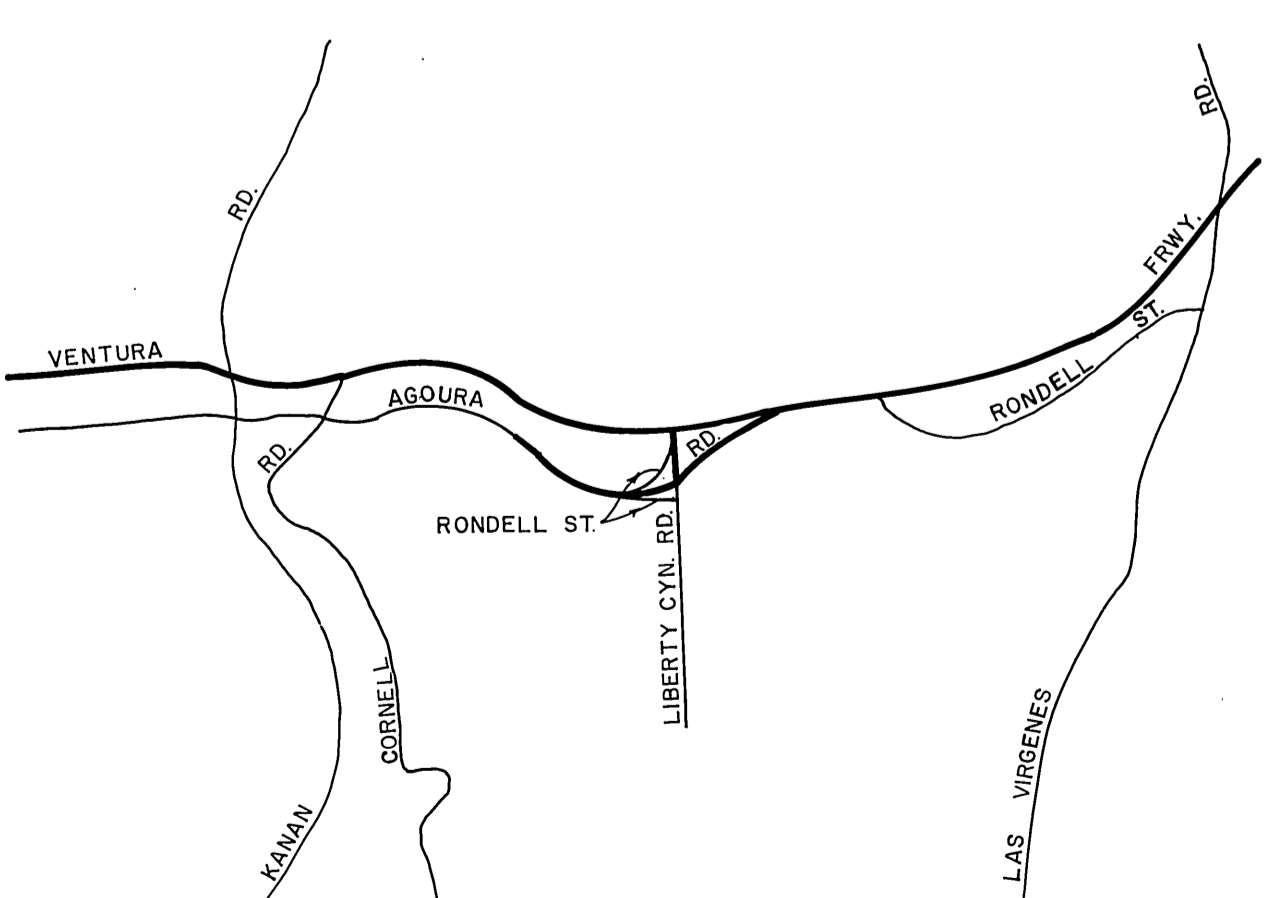


C 2 B - 2302



NOTE:
 (1) THIS MAP DELINEATES THE REVISED ALIGNMENT OF AGOURA ROAD AND LIBERTY CANYON ROAD ADOPTED BY THE I.E.C., FEB. 25, 1982 (SEE SURVEY DIVISION FILE MAP NO. C-202A) AND SUPERSEDES C.S.B-5160-4 AND C.S.B-5313-2 WITHIN THE LIMITS SHOWN HEREON.
 (2) THE SURVEY OF THE ALIGNMENT OF AGOURA ROAD AND LIBERTY CANYON ROAD WAS SURVEYED BY DONALD S. VOORHEIS (L.S.3447).



COUNTY OF LOS ANGELES DEPARTMENT OF COUNTY ENGINEER-FACILITIES STEPHEN J. KOONCE COUNTY ENGINEER PREPARED BY SURVEY DIVISION RICHARD J. MITCHELL ASSISTANT DEPUTY COUNTY ENGINEER SURVEYED BY SEE NOTE (2) CHECKED BY R. G. HILARIO DRAWN BY G. MASUDA	ALIGNMENT MAP OF AGOURA ROAD FROM AGOURA ROAD (100' WIDE) TO VENTURA FREEWAY, EAST OF LIBERTY CANYON ROAD LIBERTY CANYON ROAD RONDELL STREET (50' WIDE) TO VENTURA FREEWAY BASIS OF BEARINGS THE CENTERLINE OF LIBERTY CANYON ROAD (N. 3° 23' 29" W) AS SHOWN ON C.S.B-5313-2		COUNTY SURVEYOR'S MAP NO. B-5395 SHEET 1 OF 1 SHEET FILED: <i>Richard J. Mitchell</i> 1982 DEPUTY SURVEYED JULY 1975 MARCH 1980 REFERENCE F.B. 3150 F.B. 3851 JOB NUMBER 1500-14 INDEX MAP NO. 159-057	REVISION NO. BY DATE