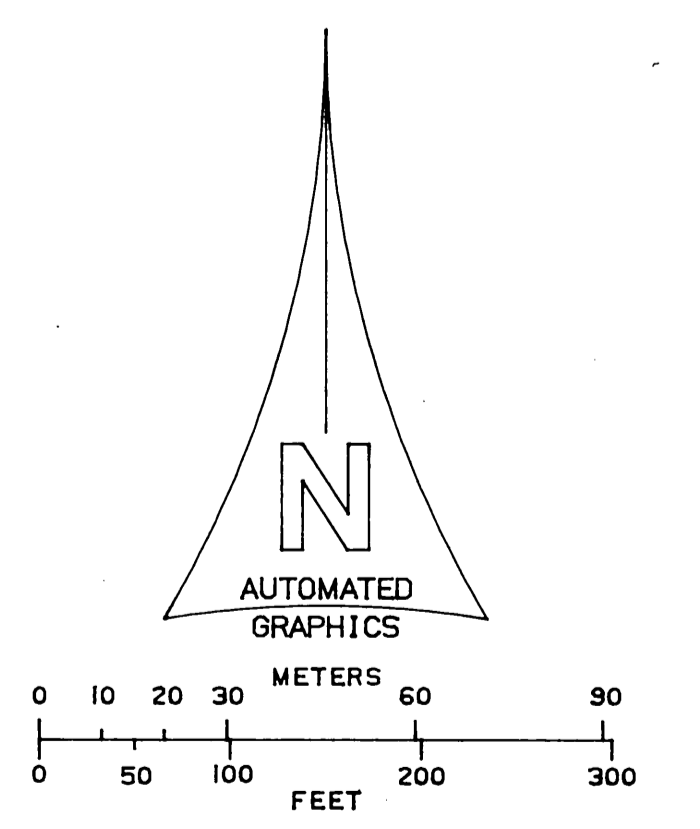
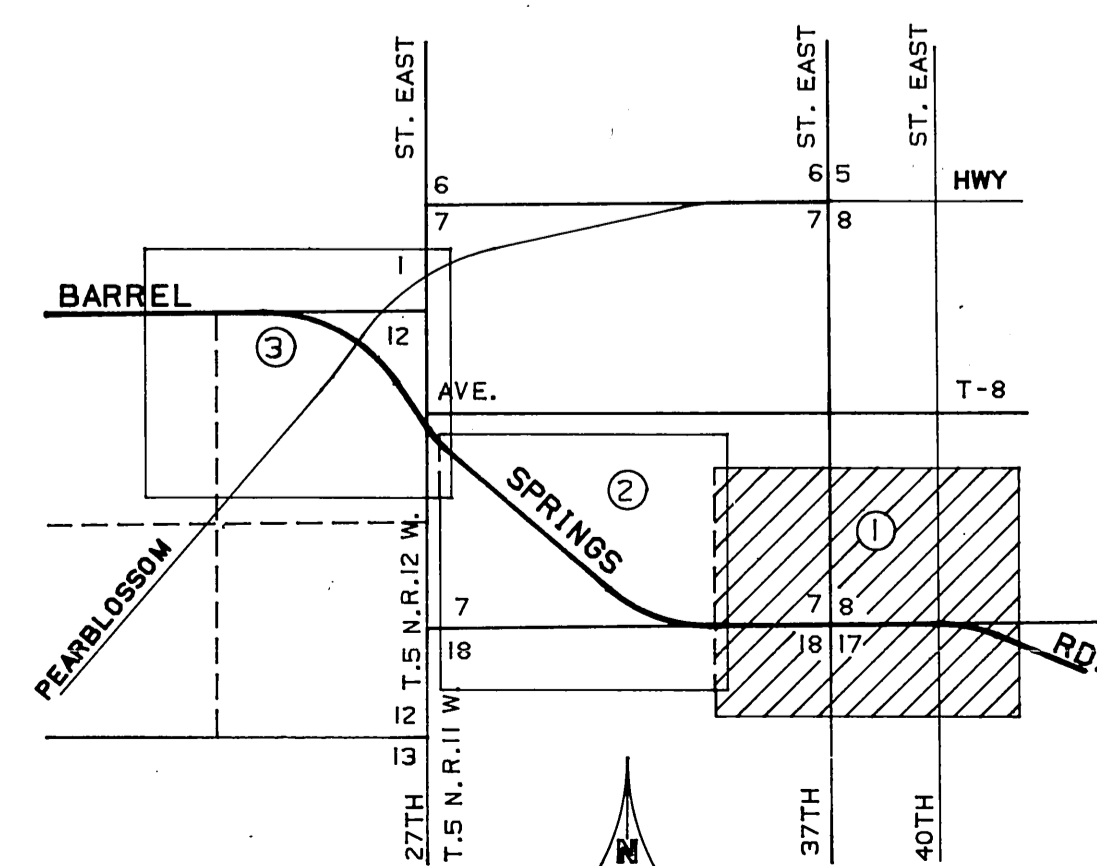
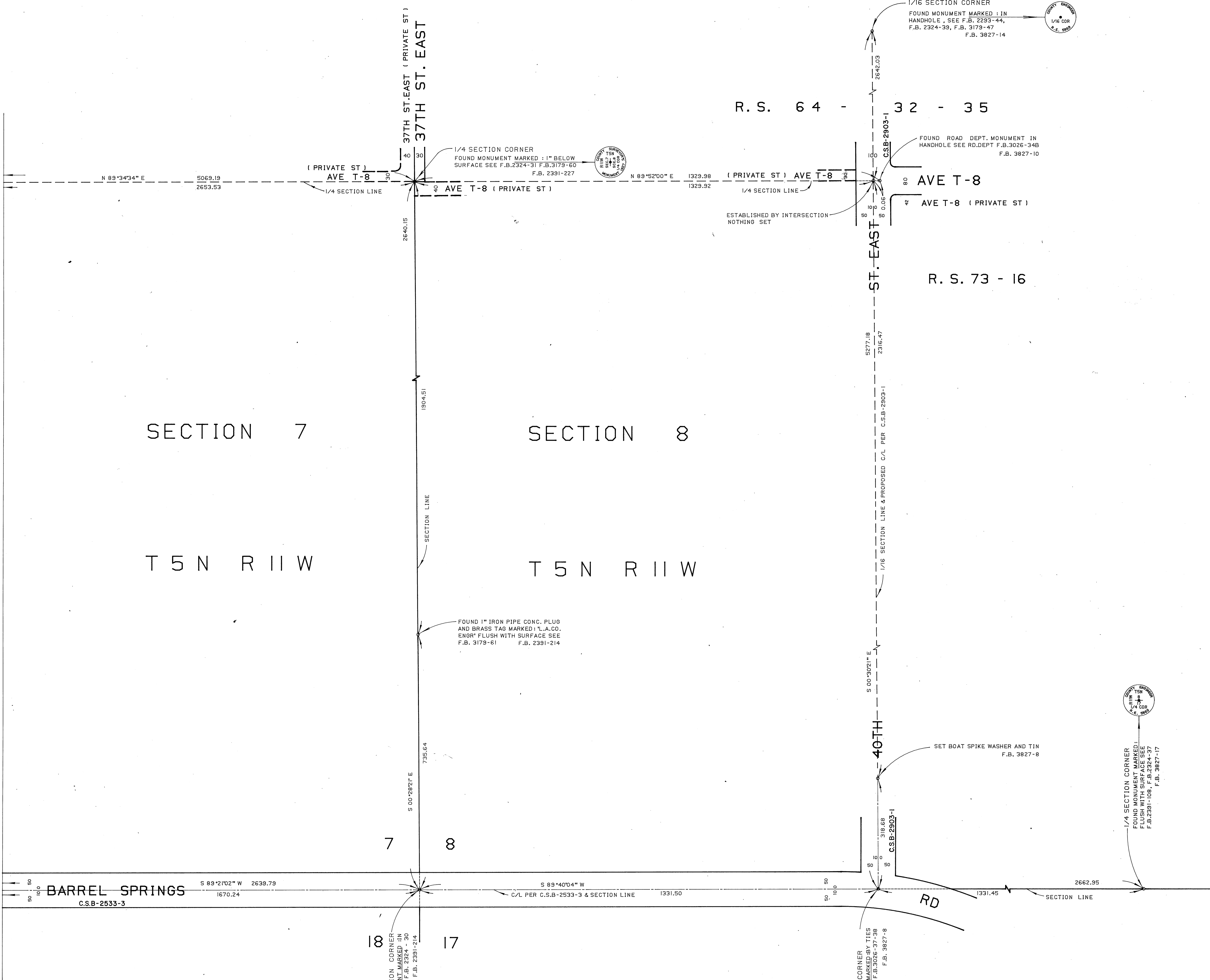
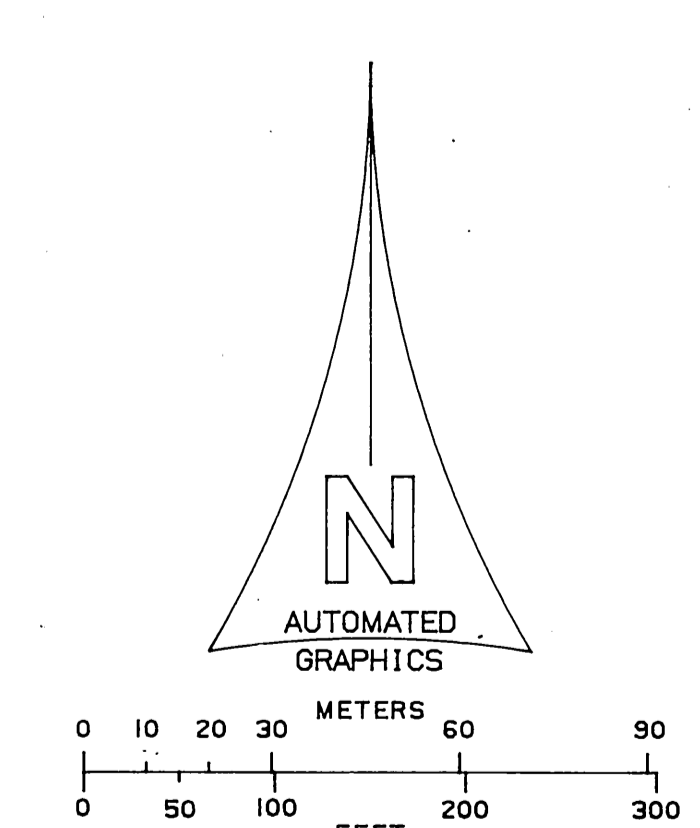
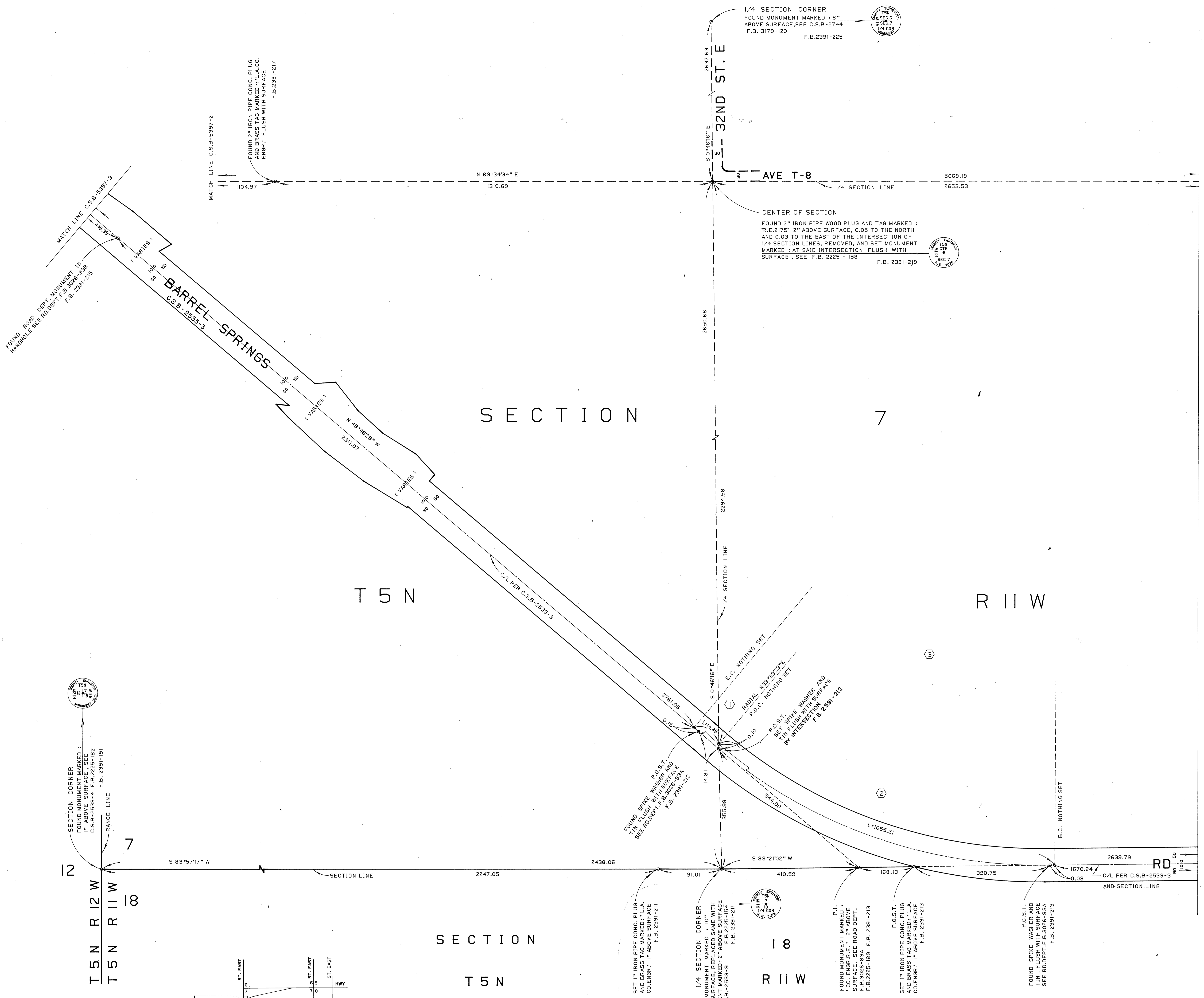


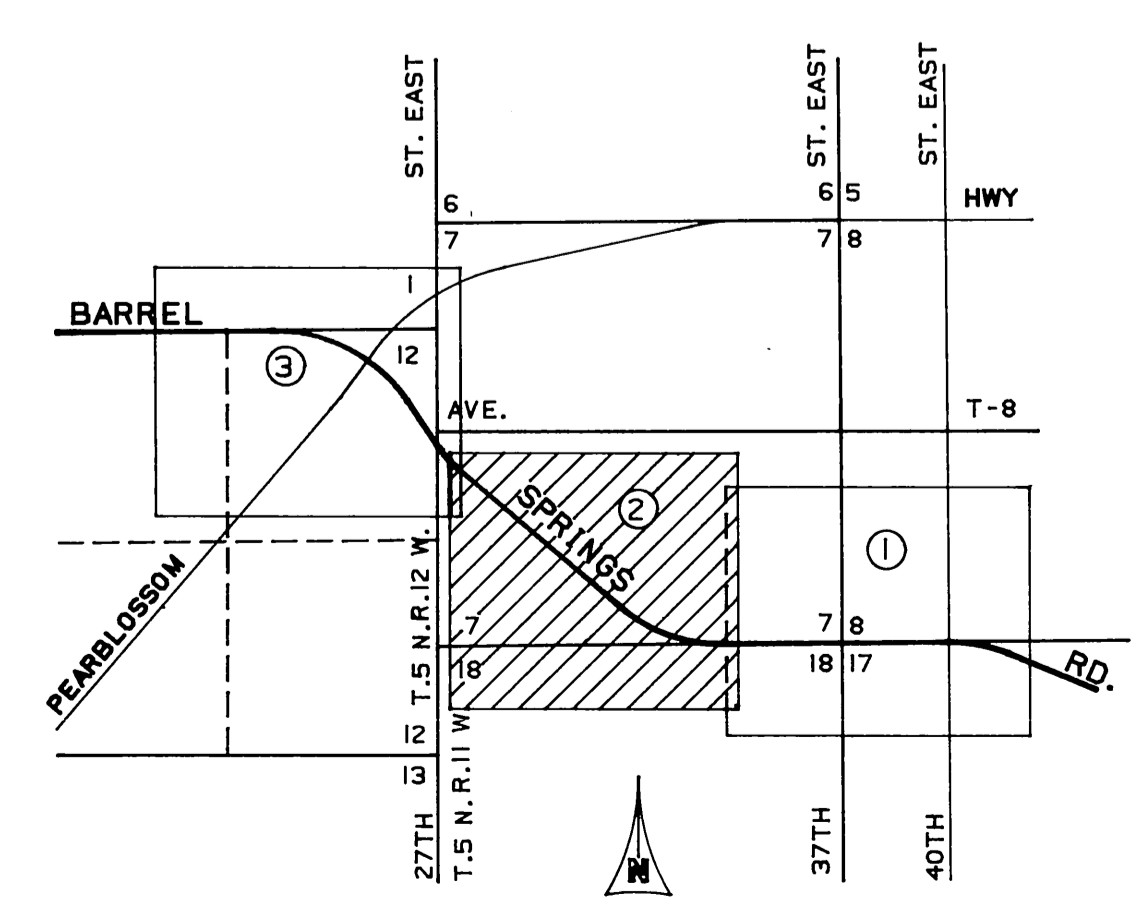
MATCH LINE C.S.B-5397.2



COUNTY OF LOS ANGELES DEPARTMENT OF COUNTY ENGINEER-FACILITIES STEPHEN J. KOONCE-COUNTY ENGINEER PREPARED BY SURVEY DIVISION RICHARD J. MITCHELL ASSISTANT DEPUTY COUNTY ENGINEER SURVEYED BY - MENDONCA CHECKED BY - R. HILLARIO DRAWN BY - E. FONG	ALIGNMENT MAP OF BARREL SPRINGS ROAD FROM 40TH ST EAST TO WEST LINE SEC 12 T5N R12W BASIS OF BEARINGS CALIFORNIA COORDINATE SYSTEM, ZONE 7		COUNTY SURVEYOR'S MAP NO B-5397 SHEET 1 OF 3 SHEETS FILED: <i>April 12, 1982</i> DEPUTY SURVEYED FEB. 1973 REFERENCE F.B. 3827 F.B. 2391 JOB NUMBER 0208.21 INDEX MAP NO 65	REVISION NO BY DATE



SECTION CORNER
FOUND MONUMENT MARKED :
1" ABOVE SURFACE, SEE
C.S.B.-2533-4 F.B.2225-182
F.B. 2391-191



INDEX MAP
NOT TO SCALE

C/L CURVE DATA

NO	Δ	R	T	L
①	0°34'08"	1500.00		14.89
②	40°18'21"	1500.00		1055.21
③	40°52'23"	1500.00	558.96	1070.10

COUNTY OF LOS ANGELES
DEPARTMENT OF
COUNTY ENGINEER-FACILITIES
STEPHEN J. KOONCE-COUNTY ENGINEER

PREPARED BY
SURVEY DIVISION
RICHARD J. MITCHELL
ASSISTANT DEPUTY COUNTY ENGINEER

SURVEYED BY - MENDONCA
CHECKED BY - R. HILLARIO
DRAWN BY - E. FONG

ALIGNMENT MAP OF
BARREL SPRINGS ROAD
FROM
40TH ST EAST
TO
WEST LINE SEC 12 T5N R12W

BASIS OF BEARINGS
CALIFORNIA COORDINATE SYSTEM, ZONE 7

COUNTY SURVEYOR'S MAP NO
B-5397
SHEET 2 OF 3 SHEETS

FILED: *[Signature]* 1982
DEPUTY

SURVEYED
FEB. 1973
REFERENCE
F.B.3827 F.B.2391

JOB NUMBER 0208.21 INDEX MAP NO 65

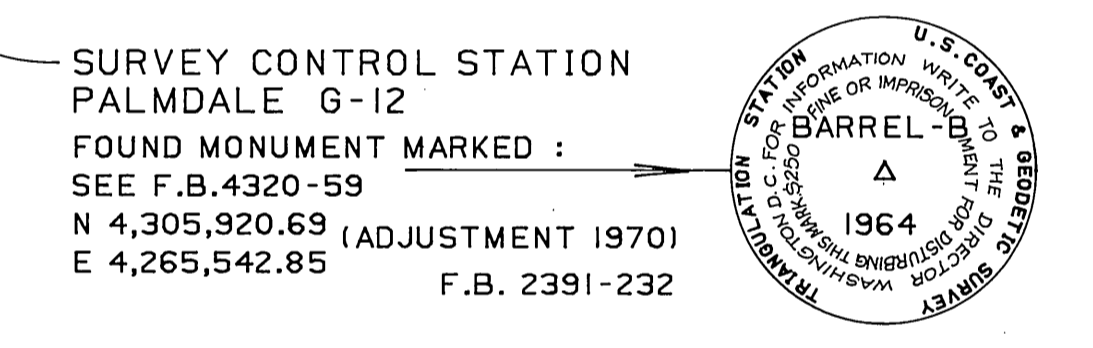
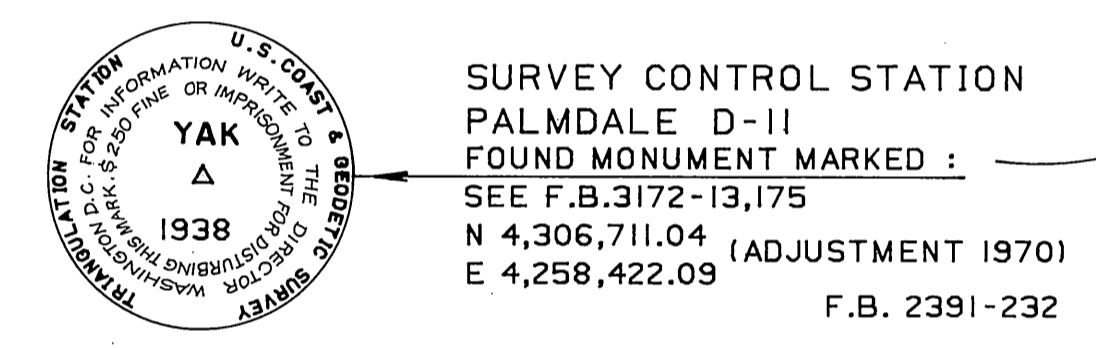
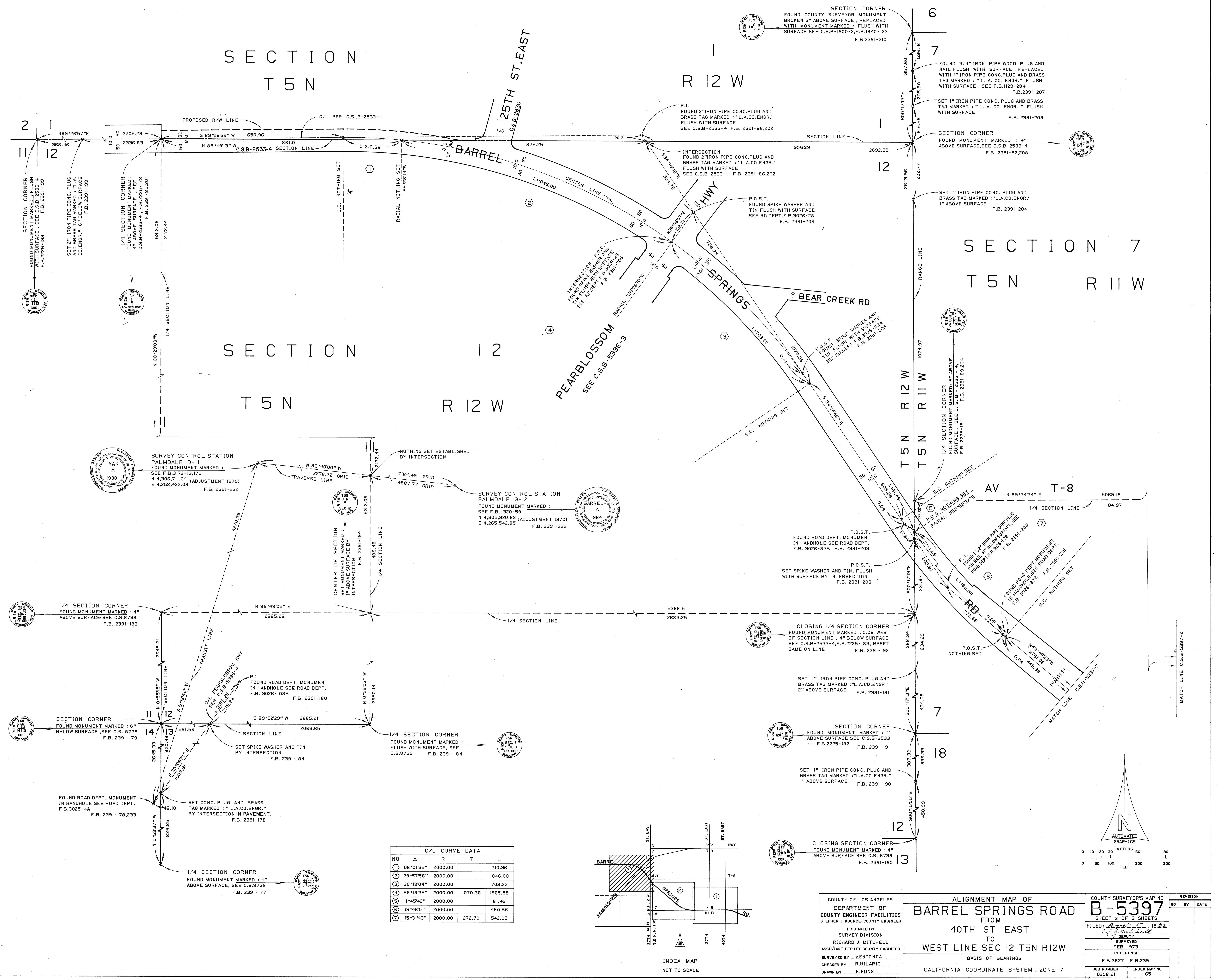
NO	BY	DATE

SECTION T5N R12W

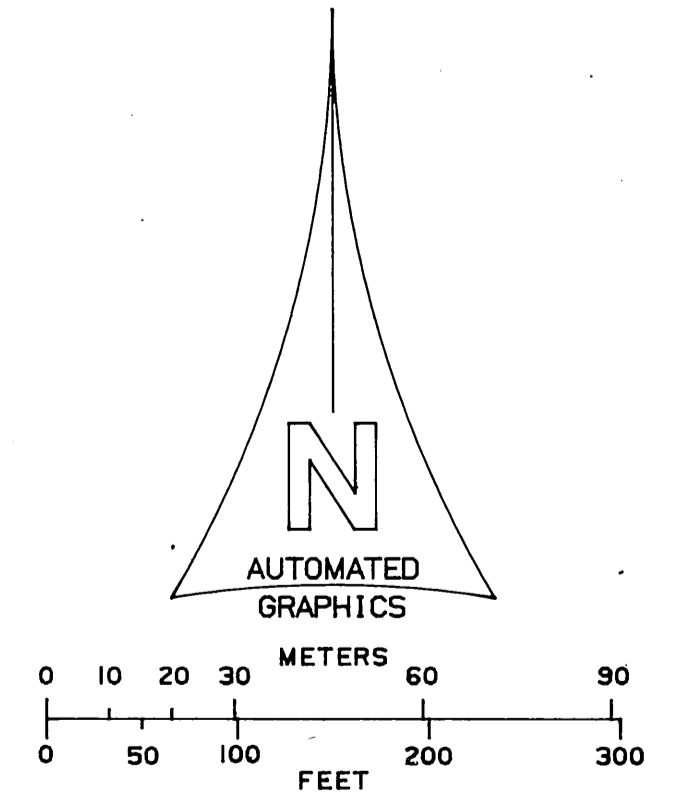
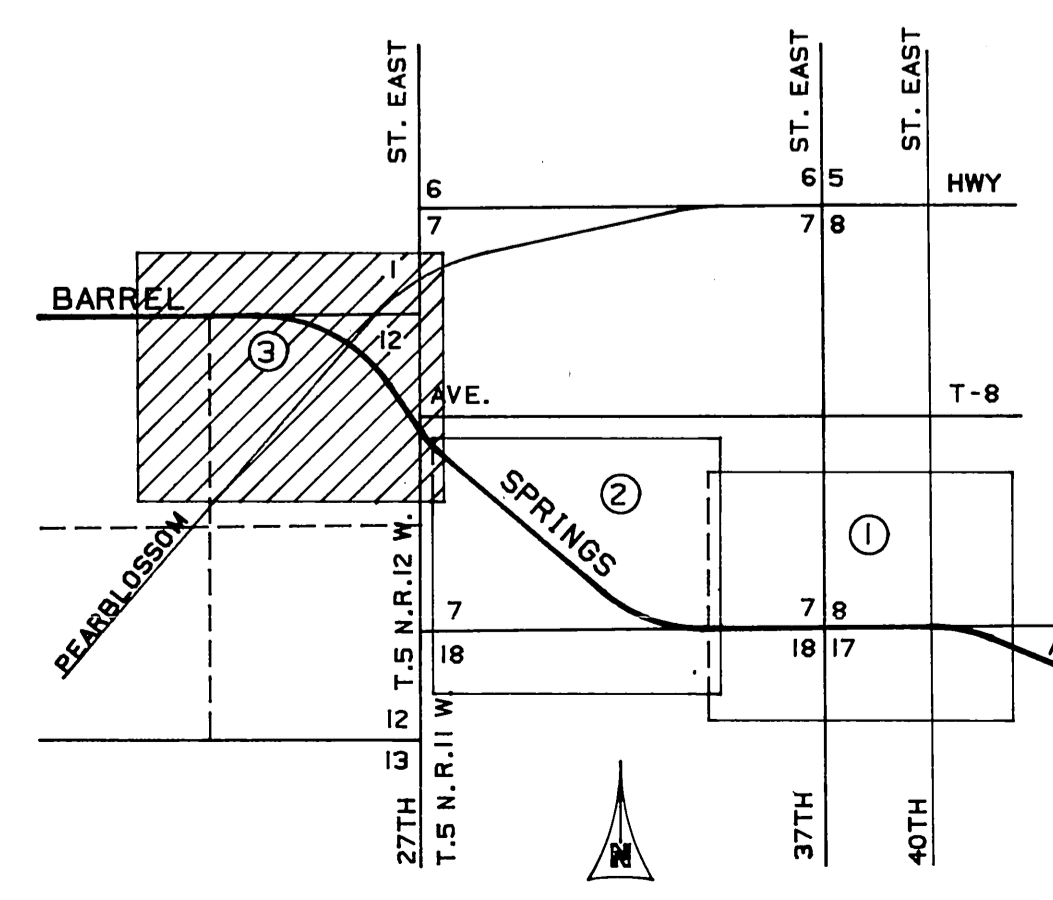
SECTION 12 T5N R12W

SECTION 7 T5N R11W

SECTION 12 T5N R12W



C/L CURVE DATA				
NO	Δ	R	T	L
①	06°01'35"	2000.00		210.36
②	29°57'56"	2000.00		1046.00
③	20°19'04"	2000.00		709.22
④	56°18'35"	2000.00	1070.36	1965.58
⑤	1°45'42"	2000.00		61.49
⑥	13°46'01"	2000.00		480.56
⑦	15°31'43"	2000.00	272.70	542.05



COUNTY OF LOS ANGELES DEPARTMENT OF COUNTY ENGINEER-FACILITIES STEPHEN J. KONCE-COUNTY ENGINEER PREPARED BY SURVEY DIVISION RICHARD J. MITCHELL ASSISTANT DEPUTY COUNTY ENGINEER SURVEYED BY - MENDONCA CHECKED BY - R.HILARIO DRAWN BY - E.FONG	ALIGNMENT MAP OF BARREL SPRINGS ROAD FROM 40TH ST EAST TO WEST LINE SEC 12 T5N R12W BASIS OF BEARINGS CALIFORNIA COORDINATE SYSTEM, ZONE 7		COUNTY SURVEYOR'S MAP NO B-5397 SHEET 3 OF 3 SHEETS FILED: <i>Reginald</i> 17, 19 82 COUNTY CLERK SURVEYED FEB. 1973 REFERENCE F.B. 3827 F.B. 2391	REVISION NO BY DATE
			JOB NUMBER 0208.21	INDEX MAP NO 65