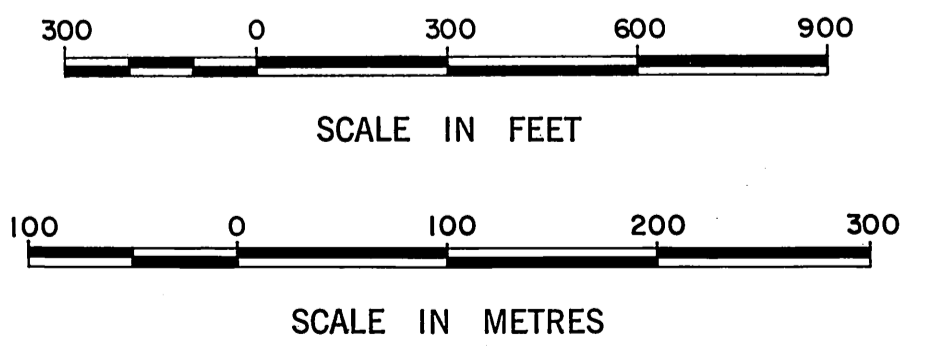
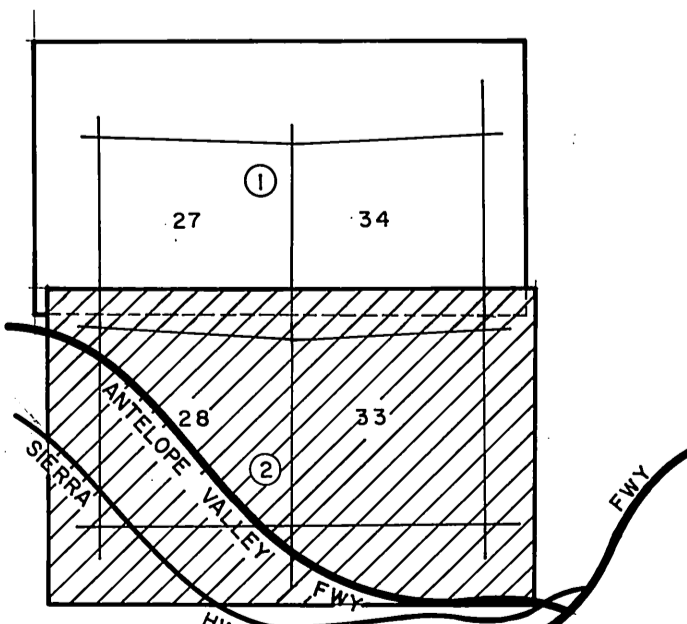
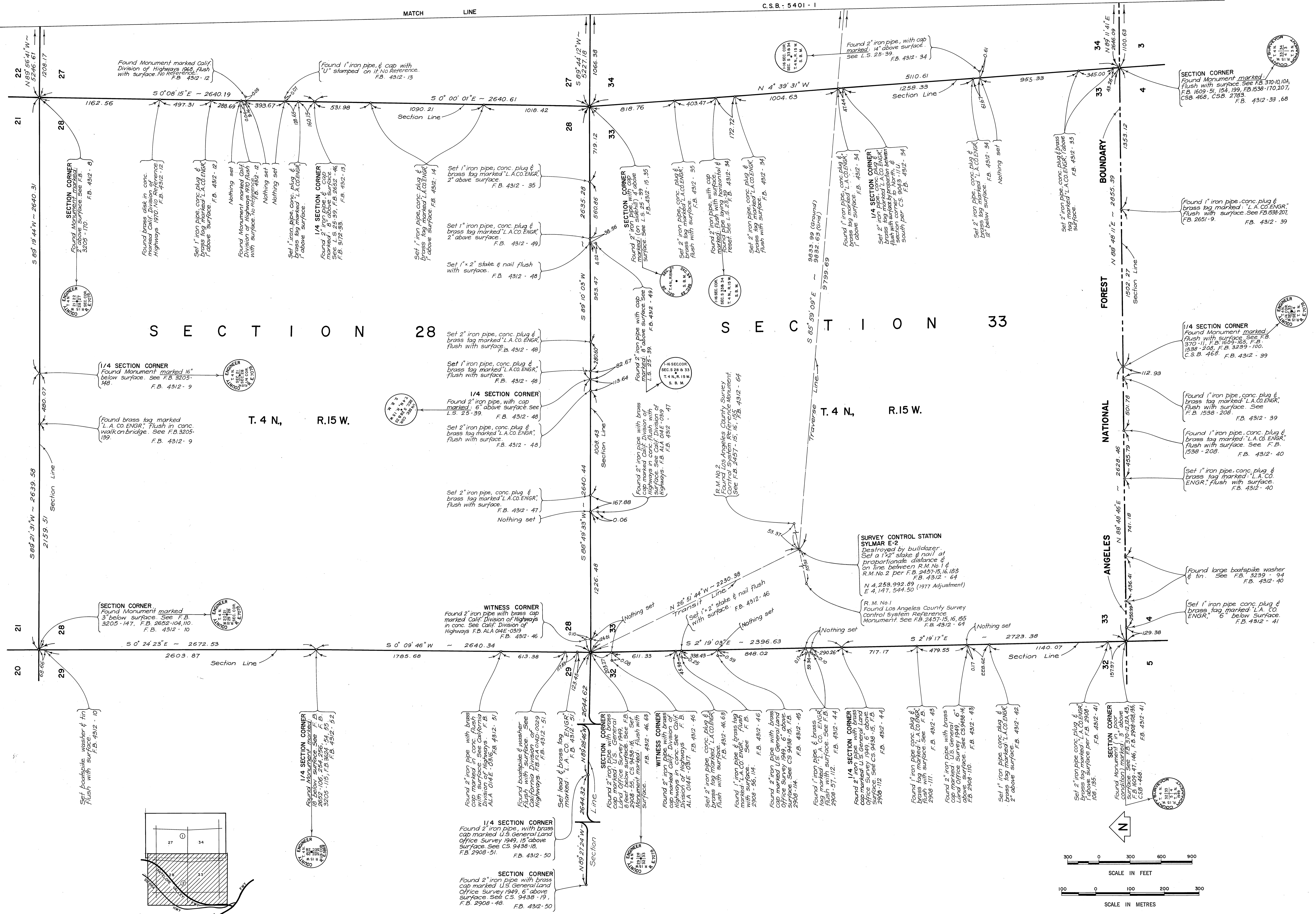


NOTE:
 THIS MAP WAS FILED FOR THE PURPOSE OF
 ESTABLISHING SECTION LINES. ALL OTHER
 CADASTRAL DATA HAS BEEN OMITTED.

COUNTY OF LOS ANGELES DEPARTMENT OF COUNTY ENGINEER-FACILITIES STEPHEN J. KOONCE-COUNTY ENGINEER PREPARED BY SURVEY DIVISION RICHARD J. MITCHELL-DIVISION ENGINEER SURVEYED BY R.L. STRADER CHECKED BY B. GOINS DRAWN BY S. HAQUE	MAP OF SECTIONS 27, 28, 33, & 34 T. 4 N., R. 15 W.		COUNTY SURVEYOR'S MAP NO. B-5401
	SHEET 1 OF 2 SHEETS FILED: <i>[Signature]</i> 10 19 81 DEPUTY SURVEYED AUG. 1976		REVISION NO. BY DATE
	BASIS OF BEARINGS CALIFORNIA COORDINATE SYSTEM, ZONE 7		F. B. 4312
	JOB NUMBER 0302-01		INDEX MAP NO. 248-137 248-157



NOTE:
THIS MAP WAS FILED FOR THE PURPOSE OF
ESTABLISHING SECTION LINES. ALL OTHER
CADASTRAL DATA HAS BEEN OMITTED.

COUNTY OF LOS ANGELES DEPARTMENT OF COUNTY ENGINEER-FACILITIES STEPHEN J. KOONCE-COUNTY ENGINEER PREPARED BY SURVEY DIVISION RICHARD J. MITCHELL-DIVISION ENGINEER SURVEYED BY R. L. STRADER CHECKED BY B. SOJNS DRAWN BY S. HAQUE	MAP OF SECTIONS 27, 28, 33, & 34 T. 4 N., R. 15 W.		COUNTY SURVEYOR'S MAP NO. B-5401 SHEET 2 OF 2 SHEETS FILED: <i>1981-12-19</i> <i>1981-12-19</i> DEPUTY SURVEYED AUG., 1976 REFERENCE F. B. 4312	REVISION NO. BY DATE
	BASIS OF BEARINGS CALIFORNIA COORDINATE SYSTEM, ZONE 7			JOB NUMBER 0302.01 INDEX MAP NO. 243 - 157
	COUNTY ENGINEER-FACILITIES SURVEY DIVISION RICHARD J. MITCHELL-DIVISION ENGINEER SURVEYED BY R. L. STRADER CHECKED BY B. SOJNS DRAWN BY S. HAQUE			
	COUNTY SURVEYOR'S MAP NO. B-5401 SHEET 2 OF 2 SHEETS FILED: <i>1981-12-19</i> <i>1981-12-19</i> DEPUTY SURVEYED AUG., 1976 REFERENCE F. B. 4312			