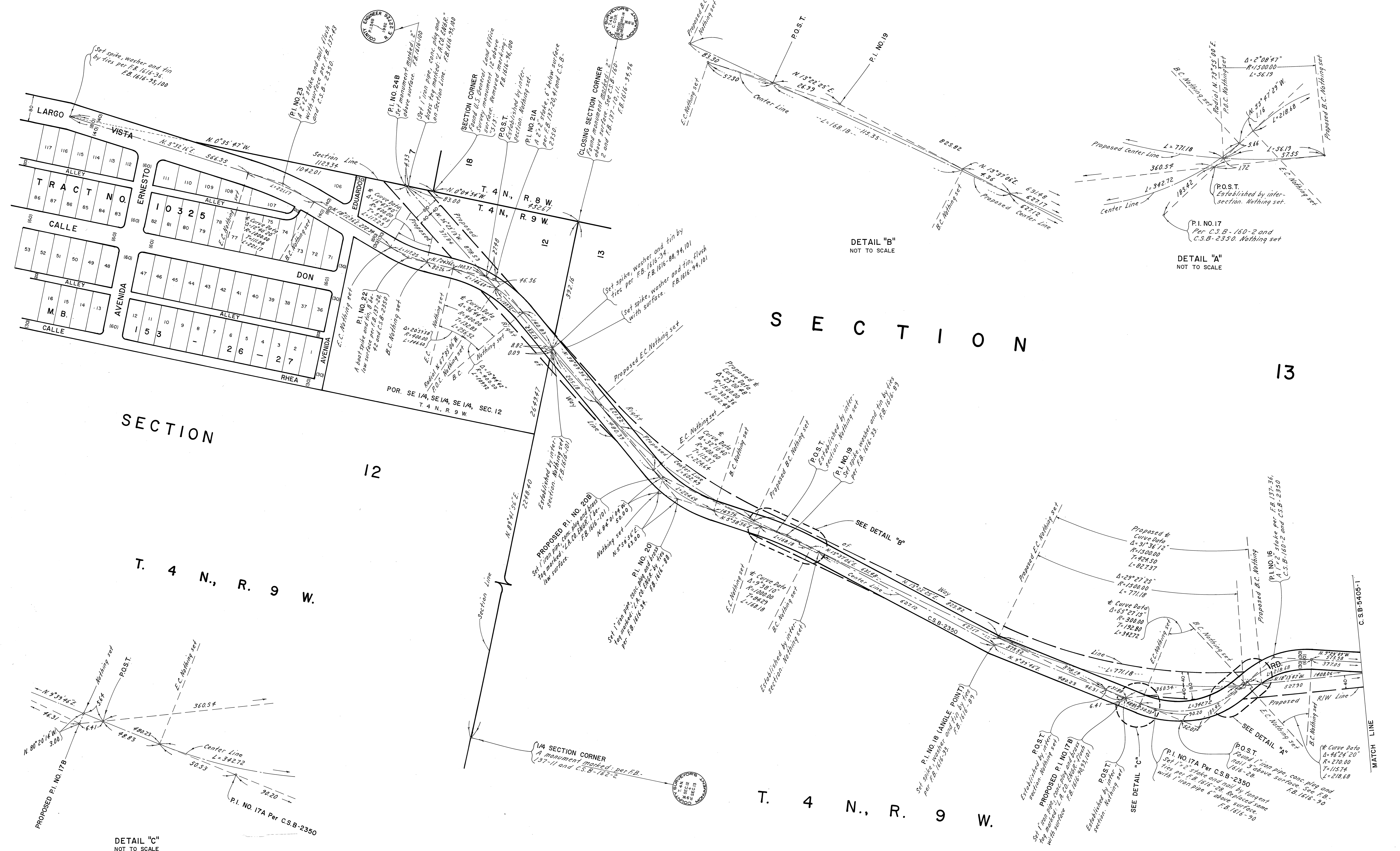


NOTE:
THIS MAP DELINEATES THE REVISED ALIGNMENT OF LARGO VISTA ROAD ADOPTED BY THE I.E.C. DATED JULY 24, 1969 AND SUPERSEDES C.S.B-2350 WITHIN THE LIMIT SHOWN HEREIN.

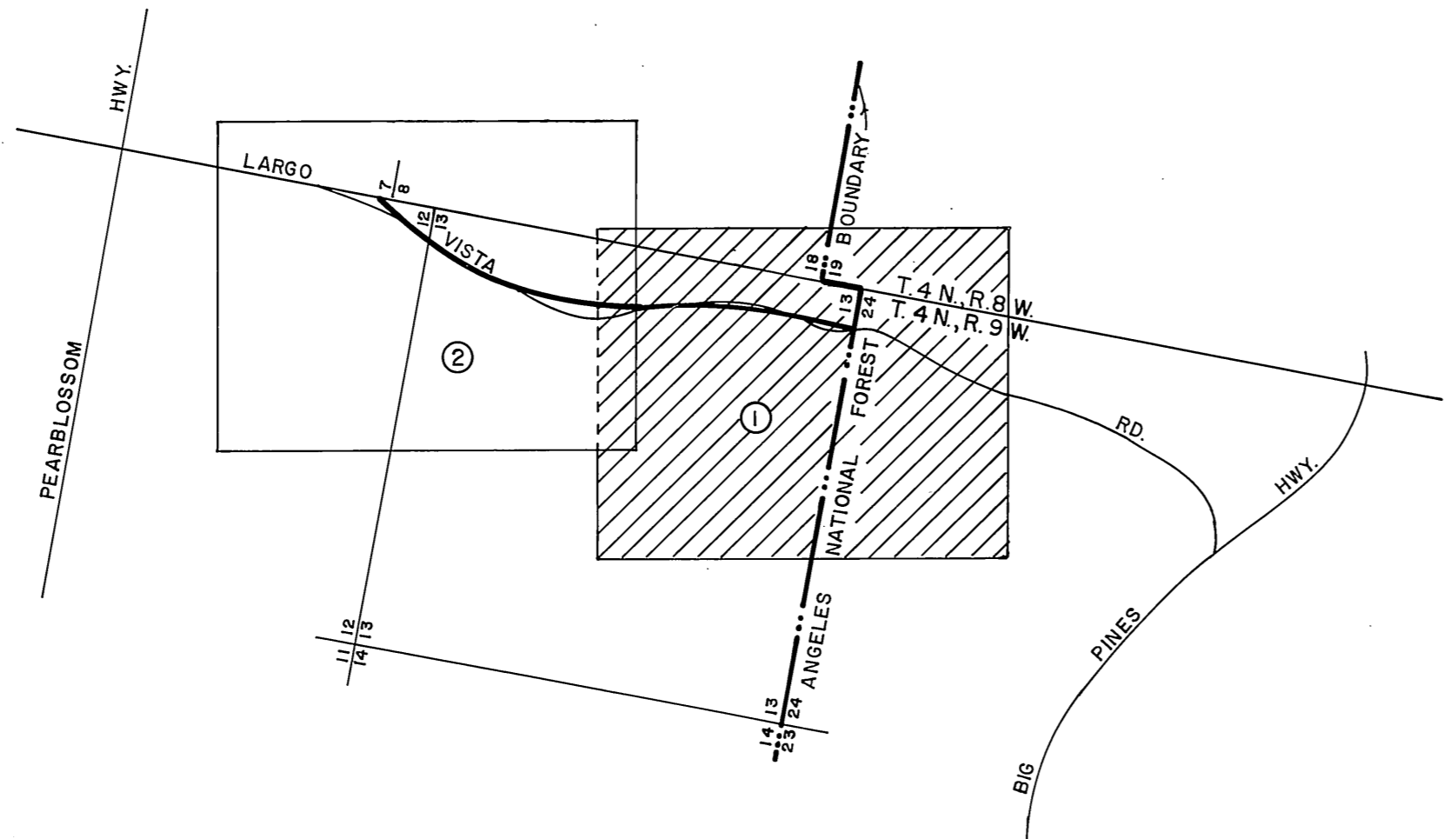
COUNTY OF LOS ANGELES DEPARTMENT OF COUNTY ENGINEER-FACILITIES STEPHEN J. KOONCE-COUNTY ENGINEER PREPARED BY SURVEY DIVISION RICHARD J. MITCHELL ASSISTANT DEPUTY COUNTY ENGINEER SURVEYED BY J. DOUGHERTY, W. MACK CHECKED BY R. MILARDO DRAWN BY G. MASUDA	ALIGNMENT MAP OF LARGO VISTA ROAD SECTION 13 T. 4 N., R. 9 W., S.B.M.		COUNTY SURVEYOR'S MAP NO. B-5405 SHEET 1 OF 2 SHEETS FILED: <i>February 23rd 1969</i> <i>R.J. Mitchell</i> DEPUTY SURVEYED MAR. 19 1969	REVISION NO. BY DATE
	BASIS OF BEARINGS CALIFORNIA COORDINATE SYSTEM, ZONE 7		REFERENCE FB 1616 C.S.B-160-2 C.S.B-160-2 JOB NUMBER 1518.06	INDEX MAP NO. 83
			MAR. 19 1969	
			MAR. 19 1969	



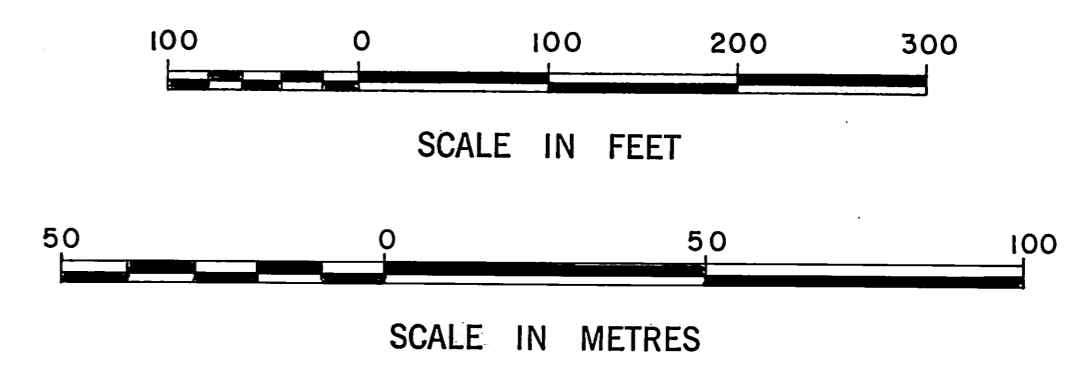
DETAIL "C" NOT TO SCALE

DETAIL "B" NOT TO SCALE

DETAIL "A" NOT TO SCALE



INDEX MAP NOT TO SCALE



NOTE:
THIS MAP DELINEATES THE REVISED ALIGNMENT OF LARGO VISTA ROAD ADOPTED BY THE I.E.C. DATED JULY 24, 1969 AND SUPERSEDES C.S.B-2350 WITHIN THE LIMIT SHOWN HEREIN.

COUNTY OF LOS ANGELES DEPARTMENT OF COUNTY ENGINEER-FACILITIES STEPHEN J. KOONCE, COUNTY ENGINEER PREPARED BY SURVEY DIVISION RICHARD J. MITCHELL, ASSISTANT DEPUTY COUNTY ENGINEER SURVEYED BY J. DOUGHERTY, W. MACK, CHECKED BY R. HILARIO, DRAWN BY G. MASUDA	ALIGNMENT MAP OF		COUNTY SURVEYOR'S MAP NO. B-5405 SHEET 2 OF 2 SHEETS FILED: <i>Estevan 2/27/82</i> 1982 DEPUTY SURVEYED MAR. 1981 REFERENCE F.B. 1616 C.S.B-160-2 C.S.B-2350 JOB NUMBER 1518.06 INDEX MAP NO. 83	REVISION
	LARGO VISTA ROAD			NO.
	SECTION 13			BY
	T. 4 N., R. 9 W., S.B.M.			DATE
BASIS OF BEARINGS				
CALIFORNIA COORDINATE SYSTEM, ZONE 7				