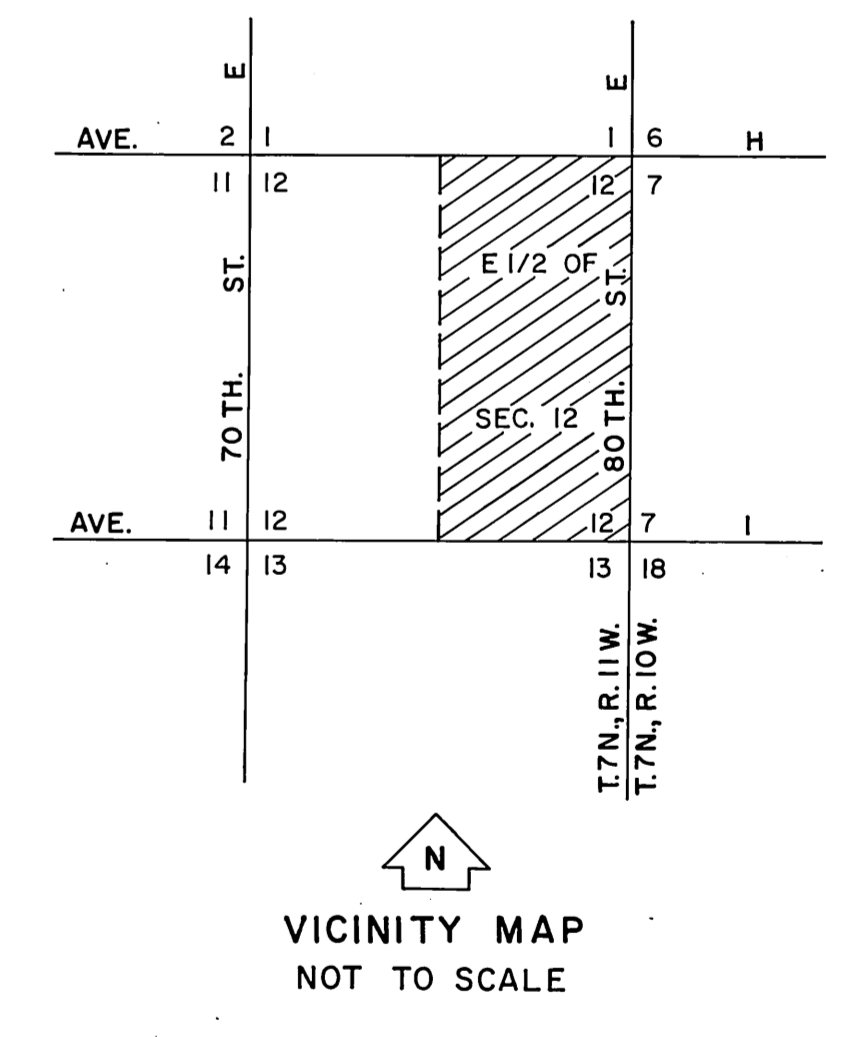
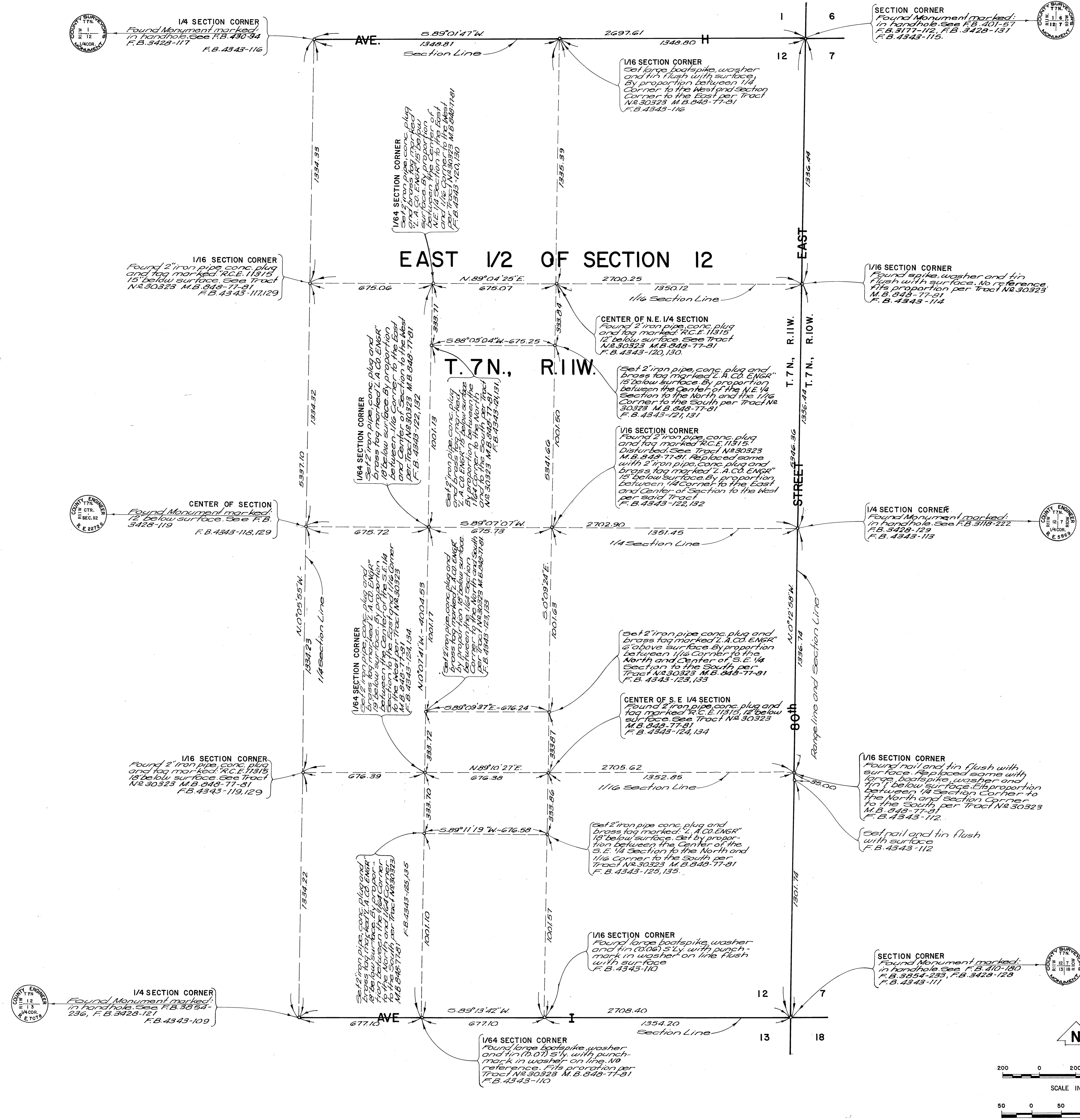
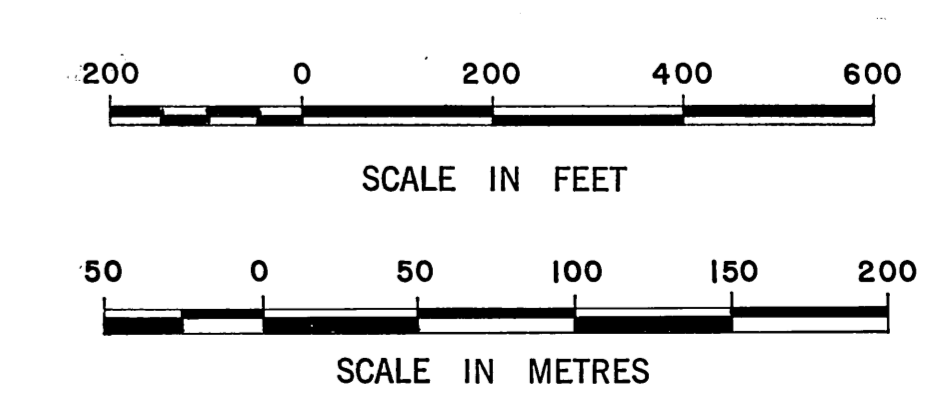


1142-B.2.0



VICINITY MAP NOT TO SCALE



NOTE:
THIS MAP WAS FILED FOR THE PURPOSE OF
ESTABLISHING SECTION LINES. ALL OTHER
CADASTRAL DATA HAS BEEN OMITTED.

COUNTY OF LOS ANGELES DEPARTMENT OF COUNTY ENGINEER-FACILITIES STEPHEN J. KOONCE-COUNTY ENGINEER PREPARED BY SURVEY DIVISION RICHARD J. MITCHELL, ASSISTANT DEPUTY COUNTY ENGINEER SURVEYED BY J. C. PIERCE CHECKED BY R. HILARIO DRAWN BY B. GOINS	MAP OF EAST 1/2 OF SECTION 12 T. 7 N., R. 11 W.		COUNTY SURVEYOR'S MAP NO. B-5411	REVISION NO. BY DATE
	SHEET 1 OF 1 SHEET FILED: December 1, 1981 <i>R. J. Mitchell</i>		APRIL 1978	
	BASIS OF BEARINGS THE CENTERLINE OF 80 th ST. EAST (N. 0° 12' 58" W.) AS SHOWN ON TRACT NO. 30323, M.B. 848-77-81.		REFERENCE F.B. 4343 T.R. NO. 30323 M.B. 848-77-81	
			JOB NUMBER 0302.01	INDEX MAP NO. 70