

SECTION 5

T. 4 N.

R. 12 W.

1/4 SECTION CORNER
 Found original juniper stake in mound of rock, per C.S. 9339. Replaced juniper stake with a 2" iron pipe set in conc. with brass cap marked.
 F.B. 319-3-8.

1/4 SECTION CORNER
 Found monument marked: See C.S.B. 193-1
 F.B. 319-4, 5.

Total Curve Data
 Δ = 32° 54' 55"
 R = 200.00
 L = 114.90

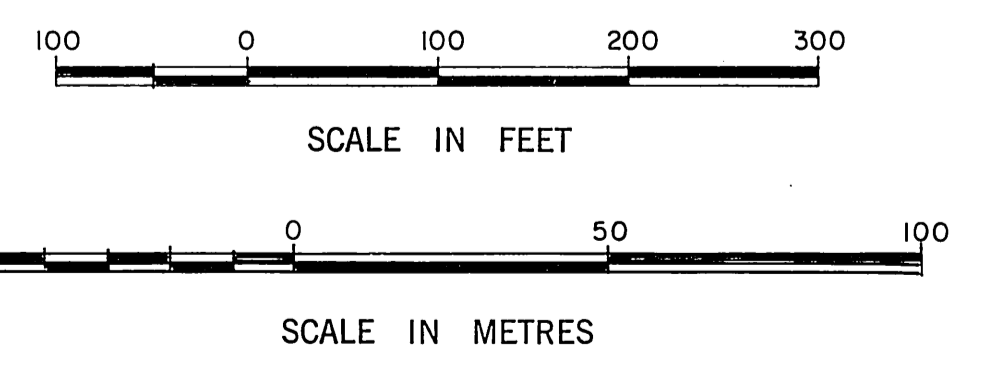
Curve Data
 Δ = 25° 32' 55"
 R = 200.00
 L = 89.18

Curve Data
 Δ = 43° 20'
 R = 200.00
 L = 136.7

Proposed Curve Data
 Δ = 31° 23' 35"
 R = 500
 L = 140.59

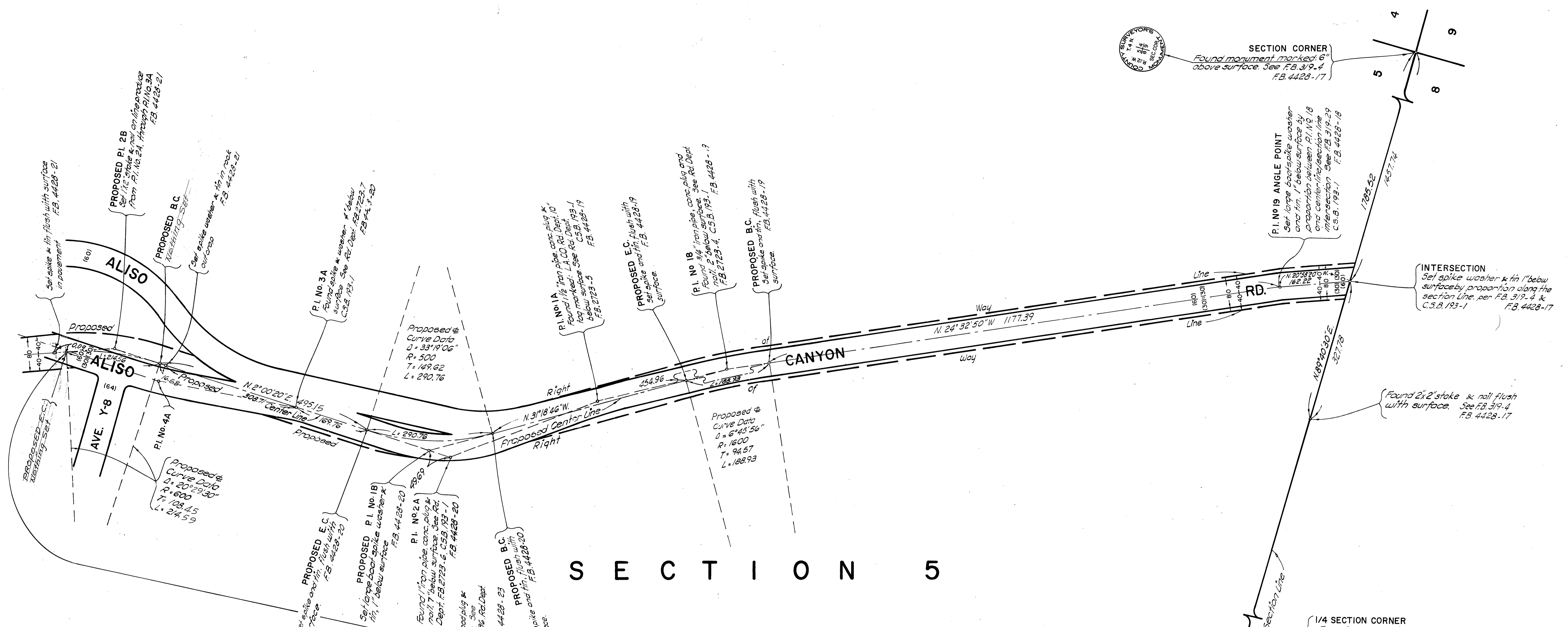
SECTION CORNER
 Found original 1/4" juniper stake in mound of earth and rock. Replaced juniper stake with 2" iron pipe set in conc. with brass cap marked.
 F.B. 319-2-3

NOTE:
 THIS MAP WAS FILED TO CORRECT THE ERRONEOUS DISTANCES 2173.49 & 417.56 SHOWN ALONG THE NORTH LINE OF SECTION 5, T.4 N., R.12 W., ON C.S.B.-5378 & C.S.B.-193, SHEET I. THE DISTANCES ARE 2153.94 & 437.11 AS SHOWN HEREON. NO OTHER CHANGES HAVE BEEN MADE.



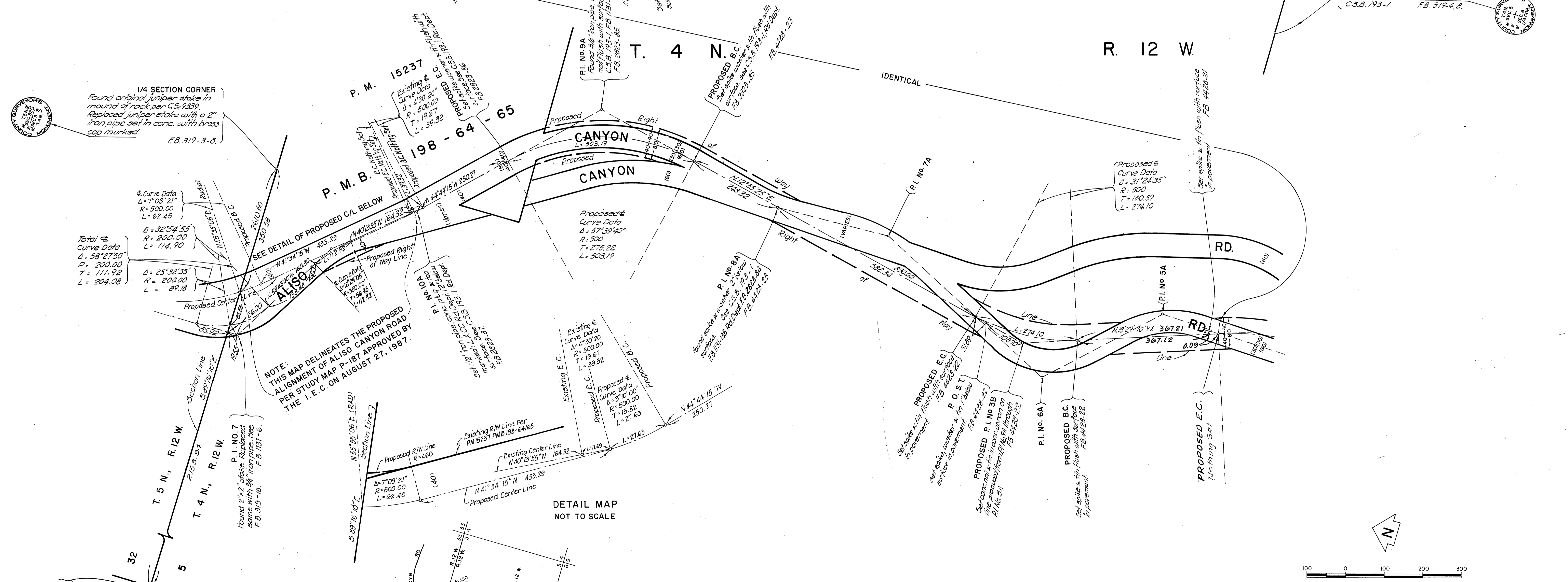
VICINITY MAP NOT TO SCALE

COUNTY OF LOS ANGELES DEPARTMENT OF COUNTY ENGINEER-FACILITIES STEPHEN J. MOONCE-COUNTY ENGINEER PREPARED BY SURVEY DIVISION RICHARD J. MITCHELL ASSISTANT DEPUTY COUNTY ENGINEER SURVEYED BY J. C. PIERCE CHECKED BY R. C. BOWERS DRAWN BY S. HASUE	ALIGNMENT MAP OF		COUNTY SURVEYOR'S MAP NO. B-5419	REVISION NO. BY DATE	
	ALISO CANYON ROAD		SHEET 1 OF 1 SHEET FILED: January 12 1982 R. Pierce		
	SECTION 5, T. 4 N., R. 12 W.		SURVEYED SEPTEMBER 1979		
	BASIS OF BEARINGS THE EAST HALF OF THE SOUTH SECTION LINE OF SECTION 5, T. 4 N., R. 12 W., (N. 89° 40' 30" E.)		REFERENCE F.B. 4428 C.S.B. 193	JOB NUMBER 1500.04	INDEX MAP NO. 80



SECTION 5

R. 12 W.



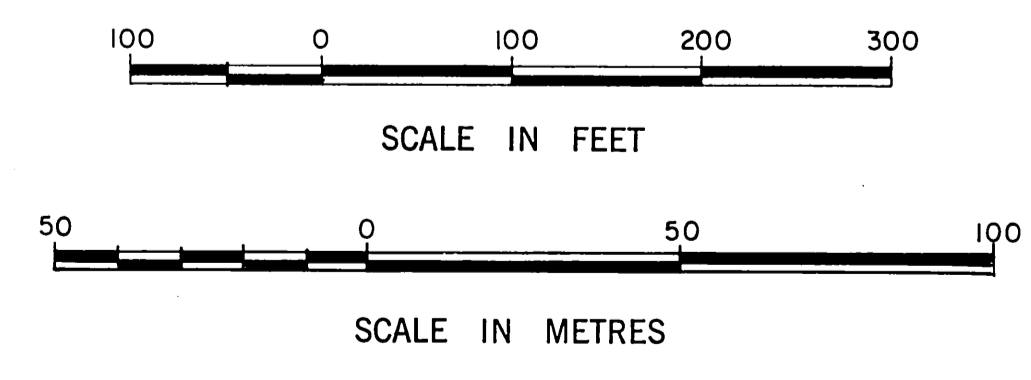
NOTE:
THIS MAP DELINEATES THE PROPOSED ALIGNMENT OF ALISO CANYON ROAD PER STUDY MAP P-187 APPROVED BY THE I.E.C. ON AUGUST 27, 1987.

DETAIL MAP NOT TO SCALE

VICINITY MAP NOT TO SCALE

NOTE:
THIS MAP WAS FILED TO CORRECT THE ERRONEOUS DISTANCES 2173.49 & 417.56 SHOWN ALONG THE NORTH LINE OF SECTION 5, T.4N., R.12W. ON C.S.B.-5378 & C.S.B.-193, SHEET 1. THE DISTANCES ARE 2153.94 & 437.11 AS SHOWN HEREOF. NO OTHER CHANGES HAVE BEEN MADE. (THIS NOTE APPLIES TO C.S.B.-5419)

NOTE: (C.S.B.-5419A)
THIS MAP WAS FILED TO CORRECT ERRONEOUS CURVE DATA AND DISTANCES ALONG THE TANGENT COURSES ON EACH SIDE OF PROPOSED CURVE "28" ON C.S.B.-5419. ALSO THE PROPOSED ALIGNMENT OF ALISO CANYON ROAD WAS REVISED TO REFLECT THE ALIGNMENT AS SHOWN ON STUDY MAP P-187, APPROVED BY THE I.E.C. ON AUGUST 27, 1987 FROM THE NORTHERLY LINE OF SECTION 5, TO A POINT 600± SOUTHEASTERLY.



COUNTY OF LOS ANGELES DEPARTMENT OF PUBLIC WORKS T. A. TIDEMANSON - COUNTY ENGINEER PREPARED BY MAPPING AND PROPERTY MANAGEMENT DIVISION SURVEY DIVISION SURVEYED BY J. G. PIERCE CHECKED BY S. E. BARR DRAWN BY M. HAMASU	ALIGNMENT MAP OF ALISO CANYON ROAD IN SECTION 5, T. 4 N., R. 12 W.		COUNTY SURVEYOR'S MAP NO. B-5419A SHEET 1 OF 1 SHEET FILED: <u>Sept 14, 1987</u> <i>Barbara S. Conner</i> SURVEYED SEPTEMBER 1979 REFERENCE F.B. 4428 C.S.B. 193	REVISION NO. BY DATE
	BASIS OF BEARINGS THE EAST HALF OF THE SOUTH SECTION LINE OF SECTION 5, T. 4 N., R. 12 W., (N. 89° 40' 30" E.)			JOB NUMBER 1500.04 INDEX MAP NO. 80
	SCALE IN FEET 0 100 200 300 SCALE IN METRES 0 50 100			
	SECTION CORNER Found original 1/4" jumper stake in mound of rock, per C.S. 9330. Replaced jumper stake with a 2" iron pipe set in conc. with brass cap marked. F.B. 319-3-8.			