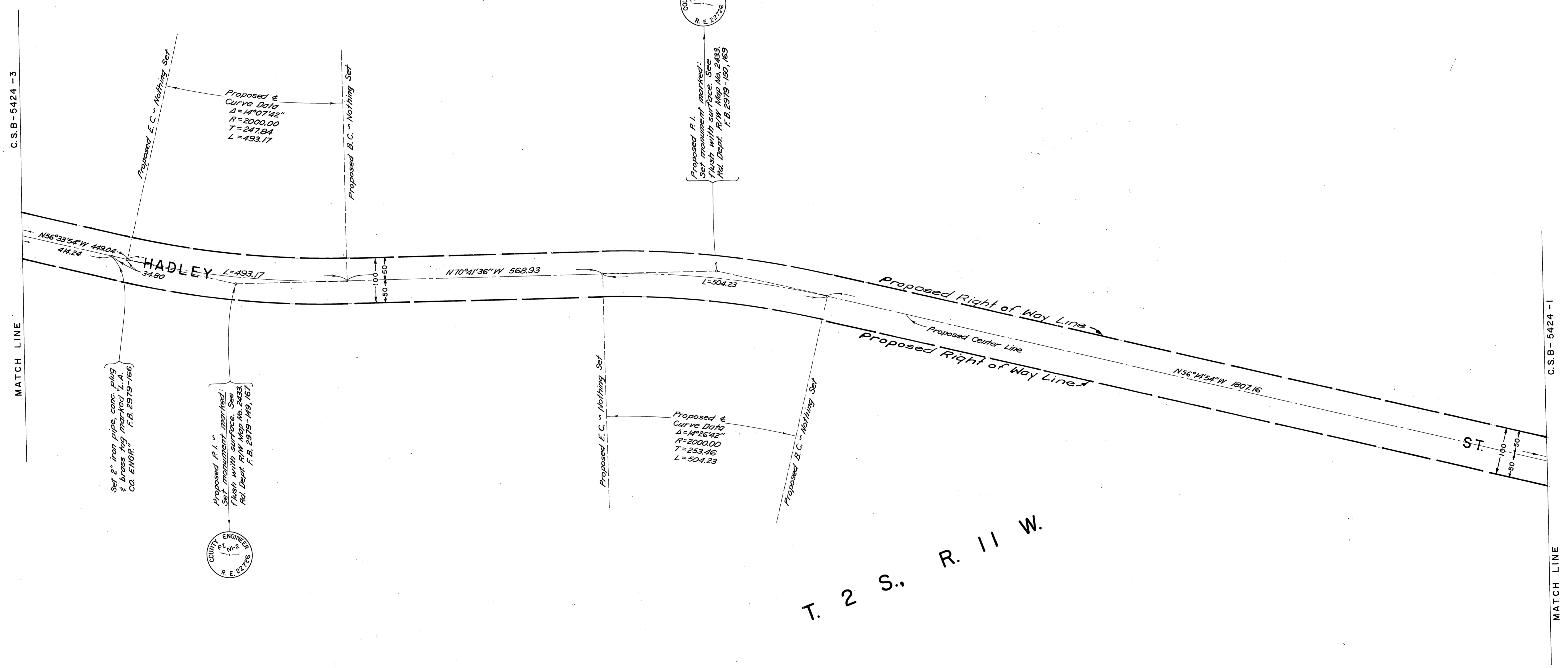




# SECTION 23



C.S.B-5424-3

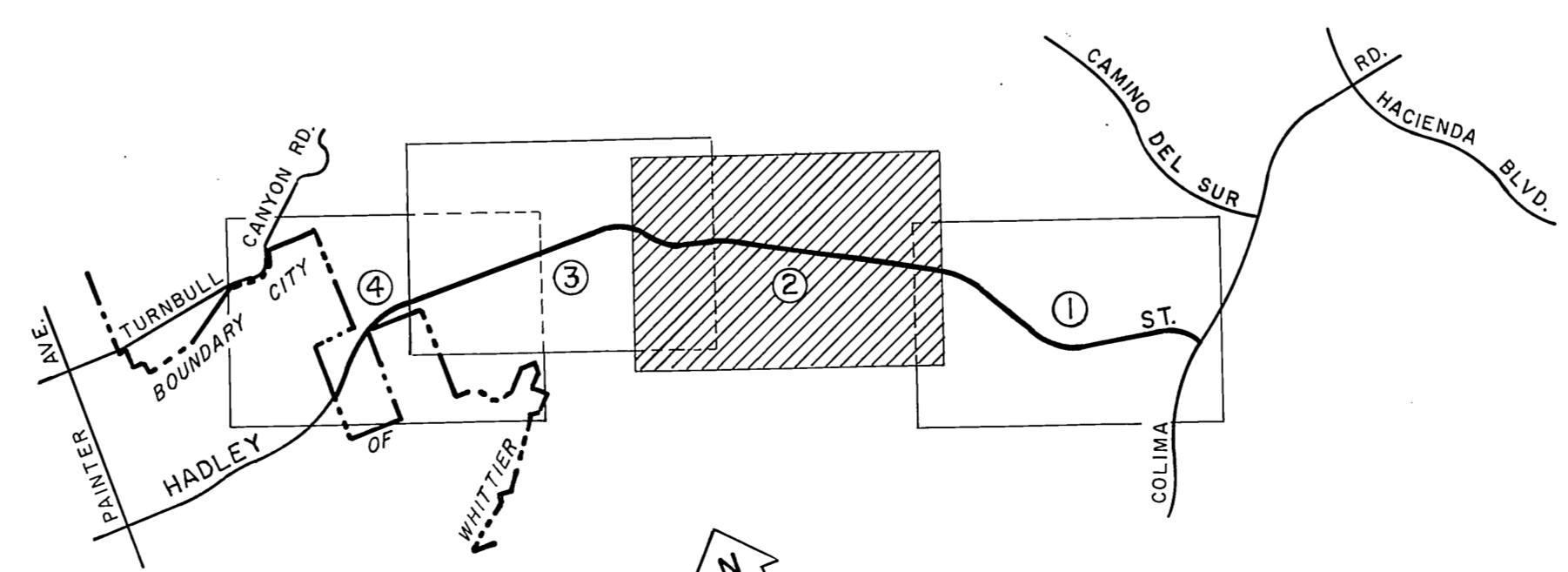
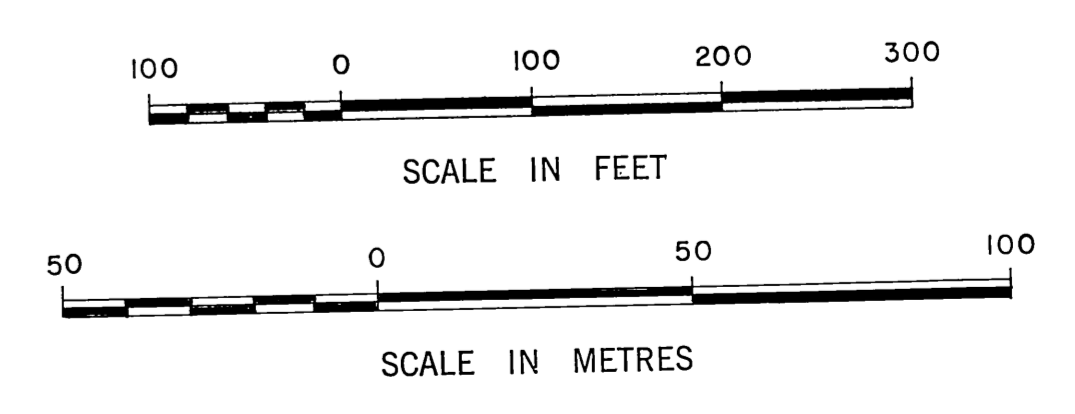
MATCH LINE

C.S.B-5424-1

MATCH LINE

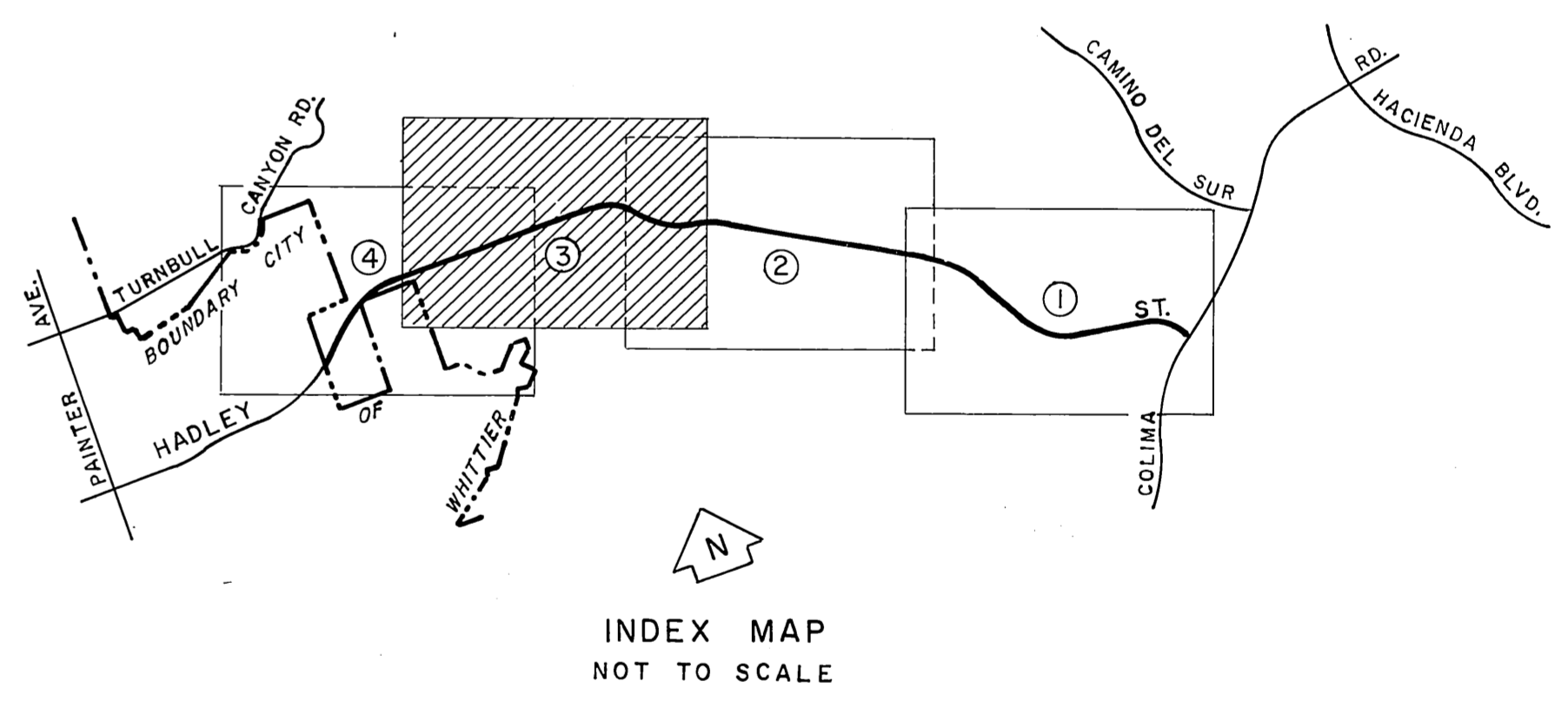
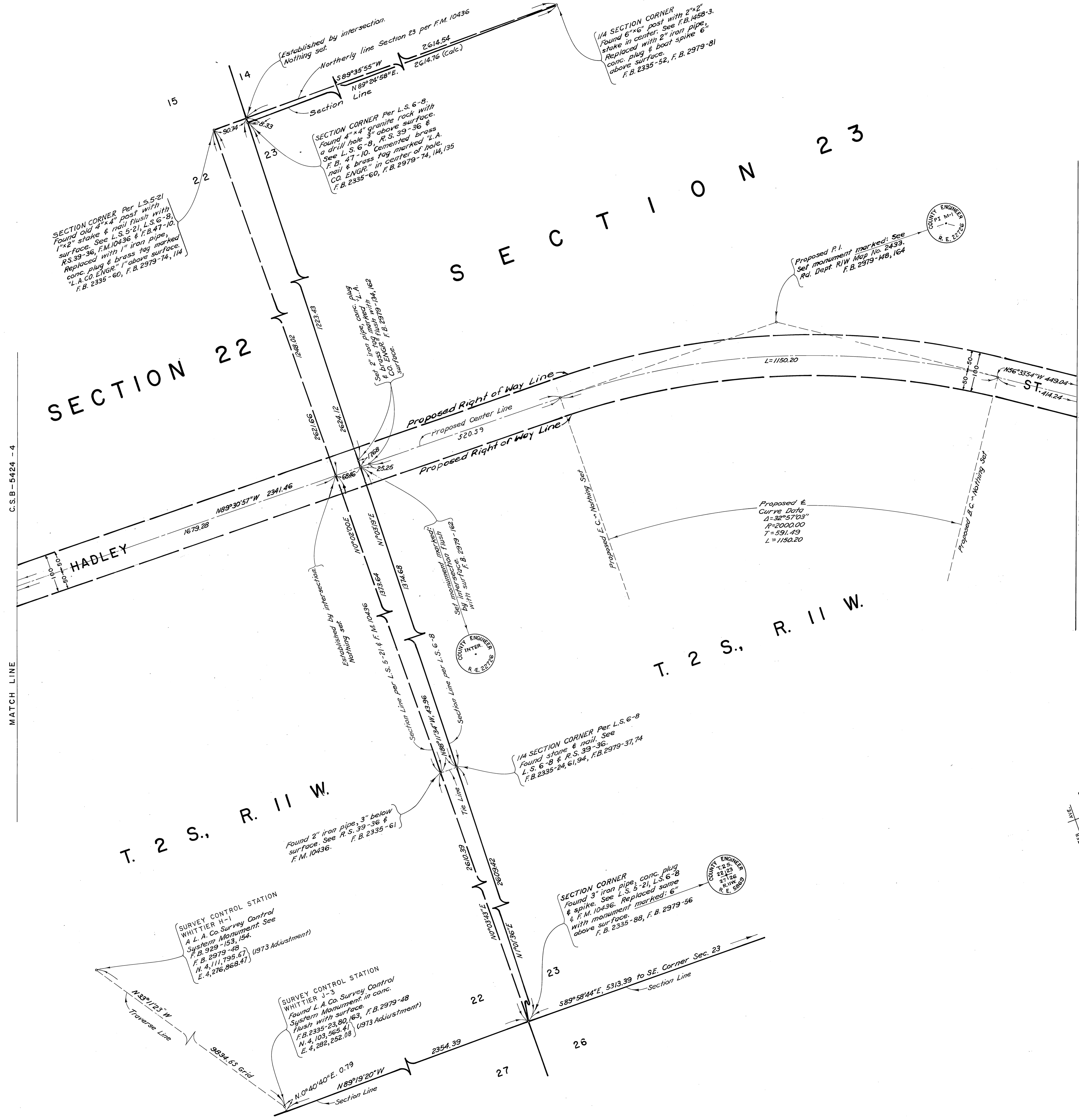
T. 2 S. R. 11 W.

NOTE:  
THIS MAP SUPERSEDES C.S.B-5340 SEE  
I.E.C. MINUTE, DATED JANUARY 22, 1981.

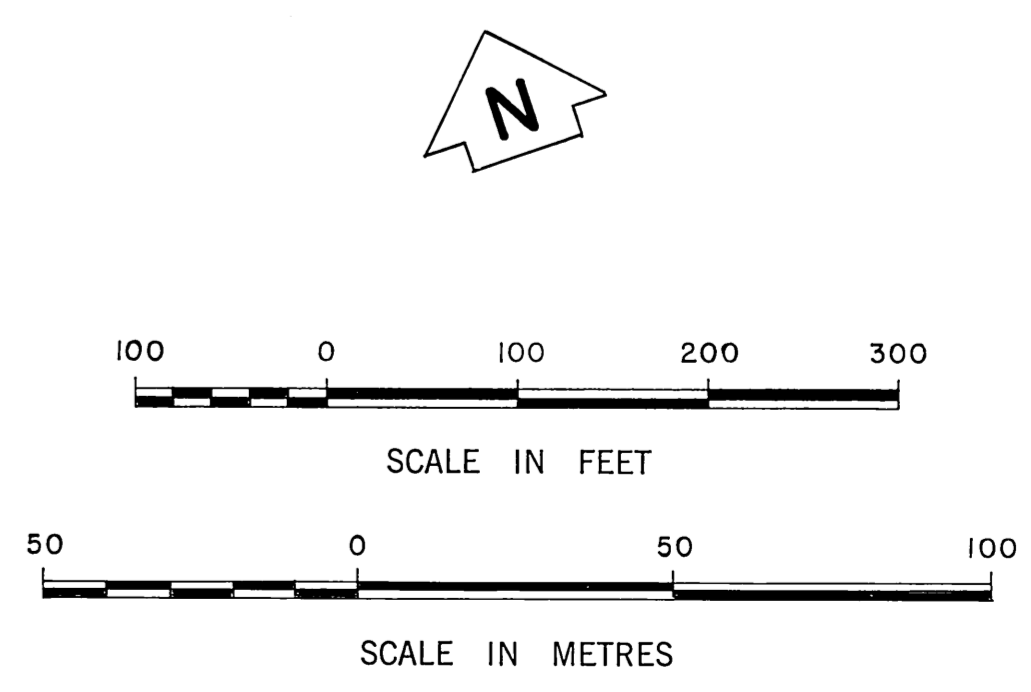


INDEX MAP  
NOT TO SCALE

<p>COUNTY OF LOS ANGELES DEPARTMENT OF COUNTY ENGINEER-FACILITIES STEPHEN J. KOONCE-COUNTY ENGINEER</p> <p>PREPARED BY SURVEY DIVISION RICHARD J. MITCHELL ASSISTANT DEPUTY COUNTY ENGINEER SURVEYED BY <u>F. E. BROOKS</u></p> <p>CHECKED BY <u>B. GOINS</u></p> <p>DRAWN BY <u>G. MASUDA</u></p>	<p>ALIGNMENT MAP OF <b>HADLEY STREET</b> FROM <b>COLIMA ROAD</b> TO <b>WHITTIER CITY BOUNDARY</b></p> <p>BASIS OF BEARINGS CALIFORNIA COORDINATE SYSTEM, ZONE 7</p>	<p>COUNTY SURVEYOR'S MAP NO. <b>B-5424</b></p> <p>SHEET 2 OF 4 SHEETS</p> <p>FILED: <u>March 21</u>, 1982 <u>R. J. Mitchell</u> DEPUTY SURVEYOR</p> <p>JANUARY 1958 - JULY 1977</p> <p>REFERENCE F.B. 2335 &amp; F.B. 2979</p> <p>JOB NUMBER 1500.14 INDEX MAP NO. 099-277</p>
--	---	--



NOTE:  
THIS MAP SUPERSEDES C.S.B-5340. SEE  
I.E.C. MINUTE, DATED JANUARY 22, 1981.



COUNTY OF LOS ANGELES DEPARTMENT OF COUNTY ENGINEER-FACILITIES STEPHEN J. KOONCE-COUNTY ENGINEER PREPARED BY SURVEY DIVISION RICHARD J. MITCHELL ASSISTANT DEPUTY COUNTY ENGINEER SURVEYED BY F. E. BROOKS CHECKED BY B. GOINS DRAWN BY G. MASUDA	ALIGNMENT MAP OF <b>HADLEY STREET</b> FROM <b>COLIMA ROAD</b> TO <b>WHITTIER CITY BOUNDARY</b> BASIS OF BEARINGS CALIFORNIA COORDINATE SYSTEM, ZONE 7	COUNTY SURVEYOR'S MAP NO. <b>B-5424</b>	REVISION NO. BY DATE
		SHEET 3 OF 4 SHEETS FILED: <u>March 31, 1982</u> <u>Ref. Mitchell</u> DEPUTY SURVEYED JANUARY 1958 - JULY 1977 REFERENCE F. B. 2335 & F. B. 2979 JOB NUMBER 1500.14 INDEX MAP NO. 099 - 277	

