

SECTION 22

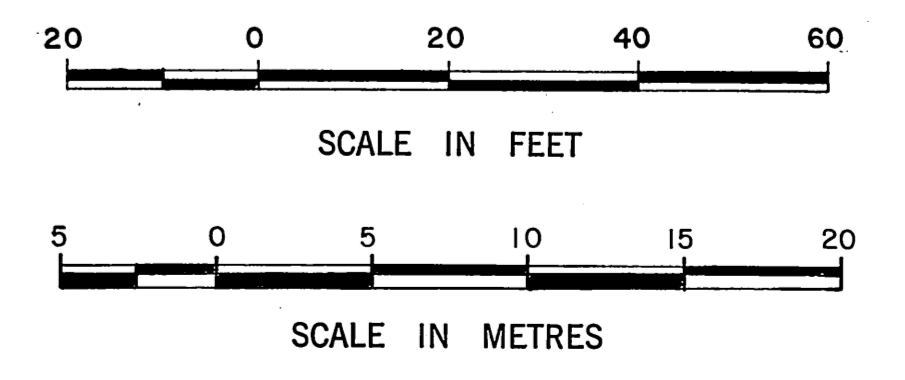
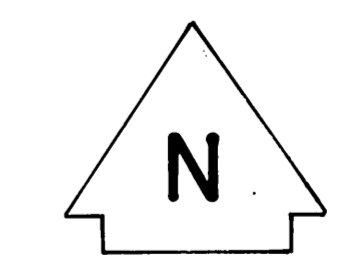
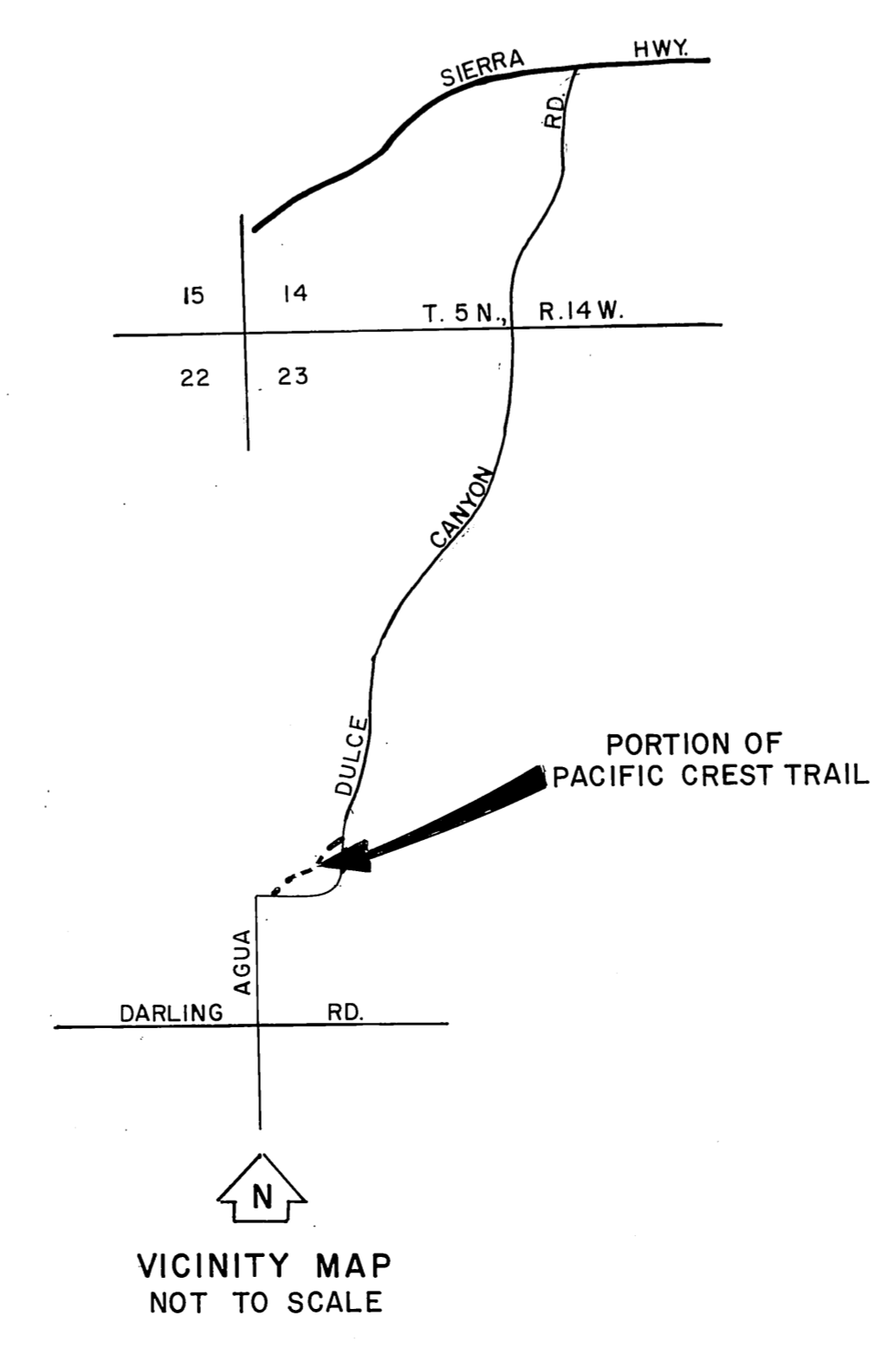
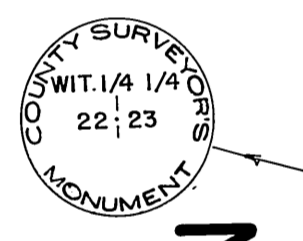
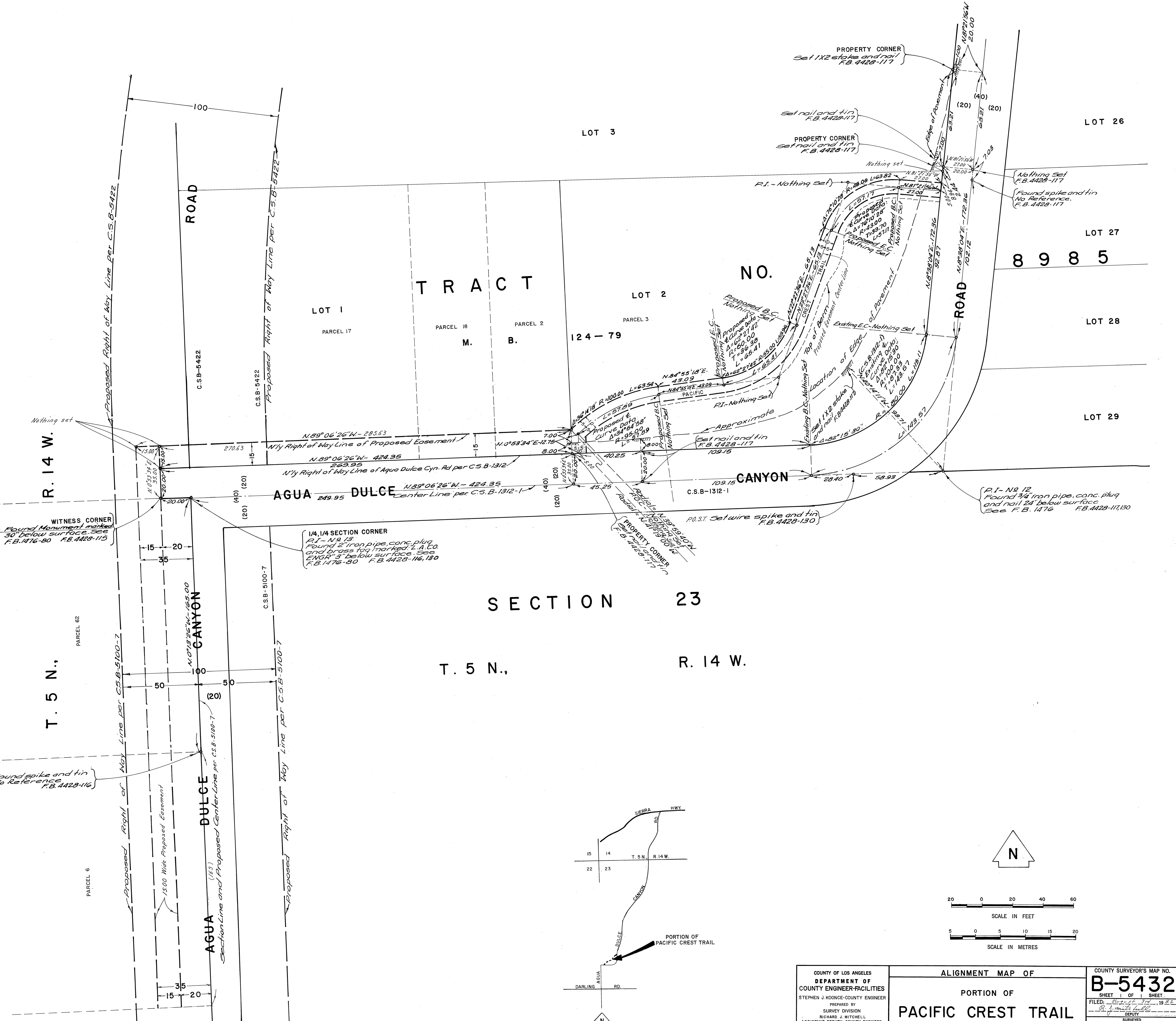
SECTION 23

T. 5 N.,

T. 5 N.,

R. 14 W.

R. 14 W.



COUNTY OF LOS ANGELES DEPARTMENT OF COUNTY ENGINEER-FACILITIES STEPHEN J. KOONCE, COUNTY ENGINEER PREPARED BY SURVEY DIVISION RICHARD J. MITCHELL, ASSISTANT DEPUTY COUNTY ENGINEER SURVEYED BY: D. BURKHOLDER CHECKED BY: R. HILARIO DRAWN BY: B. GOINS	ALIGNMENT MAP OF		COUNTY SURVEYOR'S MAP NO.	
	PORTION OF		B-5432	
	PACIFIC CREST TRAIL		SHEET 1 OF 1 SHEET	
	THE CENTERLINE OF AGUA DULCE CANYON ROAD (N. 89° 06' 26" W.) AS SHOWN ON C.S.B-5100		FILED: <i>Richard J. Koonce</i> , 1982 DEPUTY COUNTY ENGINEER JUNE 1982 REFERENCE F.B. 4428	
		JOB NUMBER 0208.21	INDEX MAP NO. 309-157	NO. BY DATE