

1/4 SECTION CORNER
Found a punch mark in
chiseled "x" on Department
of Water Resources Monu-
ment, 16" below surface. See
F.B. 3216-186
F.B. 3423-46

CENTER OF SECTION
Found Monument marked
10" below surface. See F.B.
3216-189
F.B. 3423-45

1/4 SECTION CORNER
Found Monument marked
10" below surface. See F.B.
3216-190
F.B. 3423-44

N. 89° 30' 18" E.
2641.93

5283.59
2641.66

2644.24

2256.80

5.0' 01' 22" E.
Section Line

4705.57 GRID
Line
4705.54

397.44

16
21

SURVEY CONTROL STATION
LITTLE ROCK J-14 A
Found L.A. County Survey
Control System Monument
in handhole. See C.S.B. 3049
F.B. 3423-64
N. 4,300,004.72 (1970 Adjustment)
E. 4,310,510.73

(Established by intersection.
Nothing set)

Set 1" iron pipe conc. plug &
brass tag marked L.A. CO.
Engineer, 1" above surface.
F.B. 3423-42

1/4 SECTION CORNER
Found Monument marked
10" below surface. See F.B.
3216-189
F.B. 3423-42

SECTION CORNER
Found Monument marked
Flush with surface. See F.B.
3216-187
F.B. 3423-41

S. 89° 31' 28" W.
1408.77

2647.78
1049.90

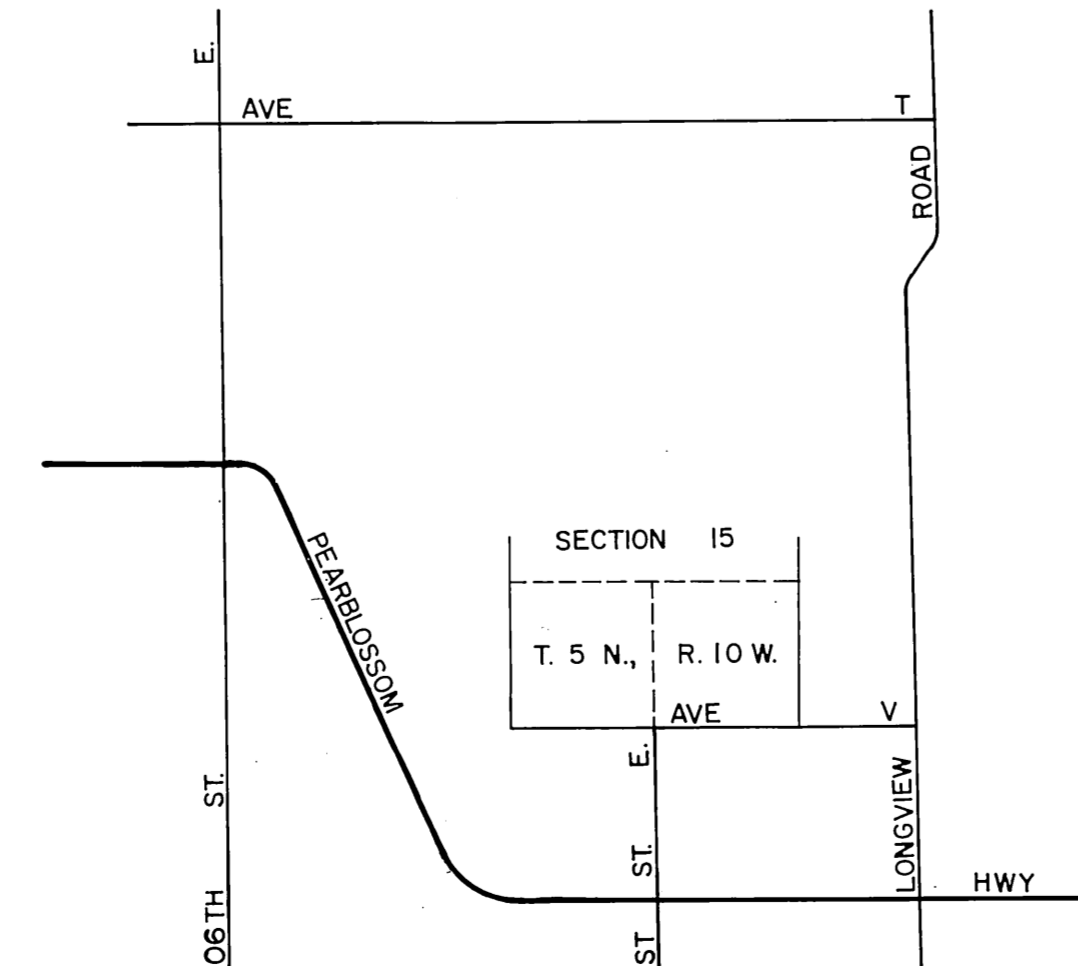
S. 89° 29' 43" W.
2647.94

2647.94

15
14

22
23

SECTION CORNER
Searched for L.A. County
Engineer Monument per
F.B. 3216-186. Found
nothing, set Monument
marked in handhole by
185 per F.B. 3216-186
F.B. 3423-41, 64

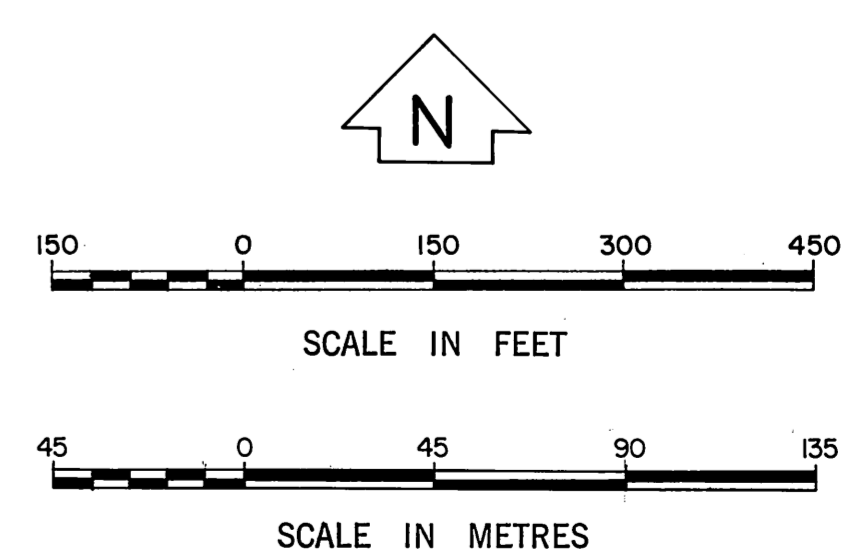


VICINITY MAP
NOT TO SCALE

S E C T I O N 1 5

T. 5 N., R. 10 W.

NOTE:
THIS MAP WAS FILED FOR THE PURPOSE OF
ESTABLISHING SECTION LINES. ALL OTHER
CADASTRAL DATA HAS BEEN OMITTED.



County of Los Angeles Department of County Engineer-Facilities. Map of South 1/2 Section 15, T. 5 N., R. 10 W., S. B. M. Includes map number B-5435, date December 1973, and surveyor information.