

TRACT NO. 9058

LOT 2

LOT 4

FIRE STATION SITE NO. 2

LOT 5

BREA CANYON

CUTOFF

ROAD

M. B. 144 - 95 - 100

LA BREA RANCHO DE LA BREA NO. 9058, M.B. 144 - 95 - 100 AND TRACT NO. 9058, M.B. 144 - 95 - 100

Established traverse one end
station (357.32) from P.I. 20
per Tract No. 35764, M.B. 987-4.
Nothing set.

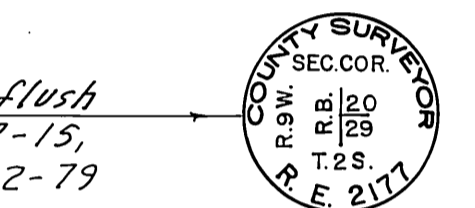
N 67° 12' 47" W
294.98
Center Line per Tract No. 35764, M.B. 987-4

Found 2" iron pipe, conc. plug and
tag marked: "L.A. CO. ENGR. 2" above
surface. Held for distance 90.00
South. See C.S. 8902-A4.
F.B. 3232-51, 79

Established at 90° to the 2" iron
pipe to the West, along the Northern
prolongation of found monuments
to the South. Nothing set.

SECTION CORNER
Found monument marked: flush
with surface. See F.B. 2627-15,
38, 71.

S.E. corner, lot 4, Tract No. 9058,
M.B. 144-95-100. Nothing set.



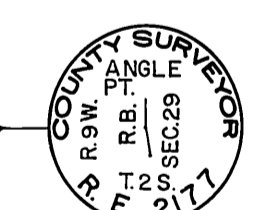
Found 3/4" iron pipe and nail, 6"
below surface in lieu of 2x2"
stake per C.S. 8902-A4 and
F.B. 2627-16. F.B. 3232-70

Set 2" iron pipe, conc. plug and brass
tag marked: "L.A. CO. ENGR. 4" below
surface by proportion between found
2" iron pipe to the North and County
Surveyor monument (Angle point)
to the South per C.S. 8902-A4.
F.B. 3232-79

Set 1" iron pipe, conc. plug and brass
tag marked: "L.A. CO. ENGR. 1" above
surface. F.B. 3232-78

Set boat spike, washer and tin
in notch of 2" oak tree 36"
above surface. F.B. 3232-78

ANGLE POINT
Found monument marked: on
ridge. See F.B. 2627-71.
F.B. 3232-78



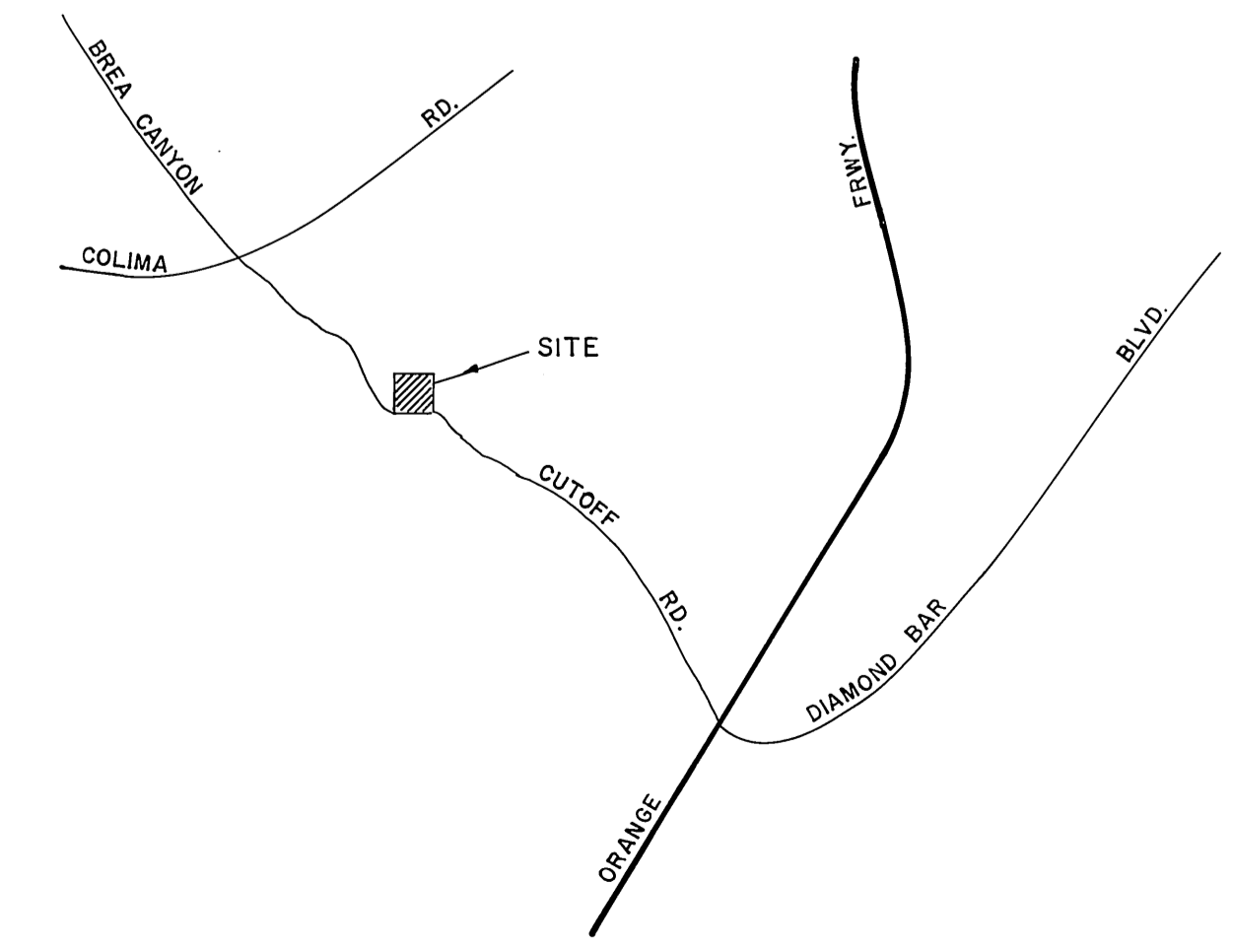
PI. 20
Found 3/4" iron pipe and washer
below surface in lieu of 2x2"
stake per C.S. 8902-A4 and
F.B. 2627-16. Held for distance
expressed as P.I. 20 per C.S. 8902-
A4 and F.B. 3232-80(B).

POST
Set square head spike
F.B. 3232-80(B)

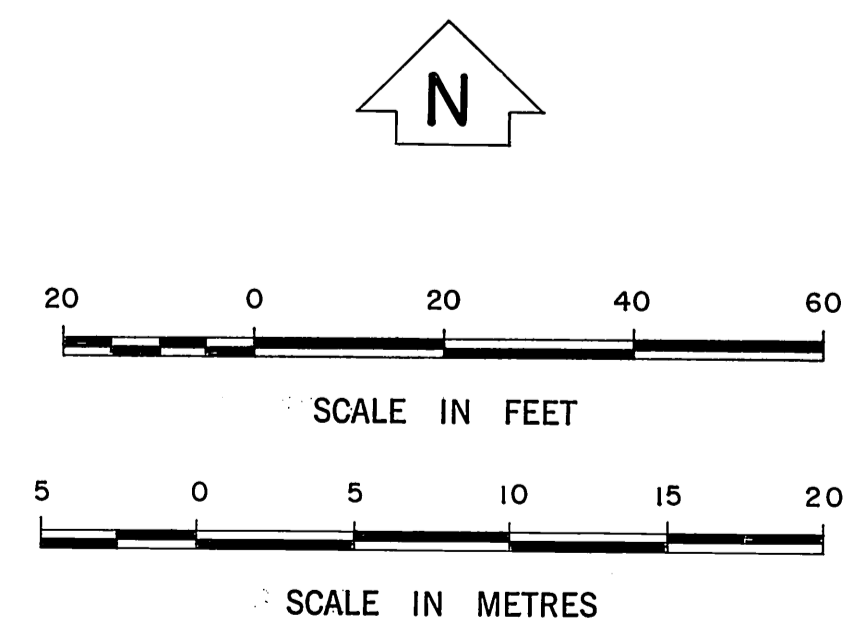
Found 1 1/2" iron pipe, conc. plug
and brass tag marked: "L.A. CO. ENGR. 1 1/2"
above surface per F.B. 3232-80.
F.B. 3232-81

Set square head spike
F.B. 3232-80

Found 1" iron pipe, conc. plug and
tag marked: "L.A. CO. ENGR. 1"
above surface. See F.B. 2627-
15, 71. F.B. 3232-78(B)



VICINITY MAP
NOT TO SCALE



COUNTY OF LOS ANGELES DEPARTMENT OF COUNTY ENGINEER-FACILITIES STEPHEN J. KOONCE-COUNTY ENGINEER PREPARED BY SURVEY DIVISION RICHARD J. MITCHELL ASSISTANT DEPUTY COUNTY ENGINEER SURVEYED BY M. E. WACKER CHECKED BY C. A. PYLE DRAWN BY G. MASUDA	BOUNDARY MAP OF FIRE STATION SITE NO. 2 SOUTH DIAMOND BAR AREA FOR TOPOGRAPHY SEE SURVEY DIVISION FILE MAP NO. J 243 BASIS OF BEARINGS THE CENTERLINE OF BREA CANYON CUTOFF ROAD (N.89°18'33" E.) AS SHOWN ON TRACT NO. 35764, M.B. 987-4		COUNTY SURVEYOR'S MAP NO. B-5439 SHEET 1 OF 1 SHEET FILED: February 14, 1988 DEPUTY SURVEYED DECEMBER, 1981 REFERENCE F.B. 3232	REVISION NO. BY DATE
	JOB NUMBER 022237		INDEX MAP NO. 099-317	