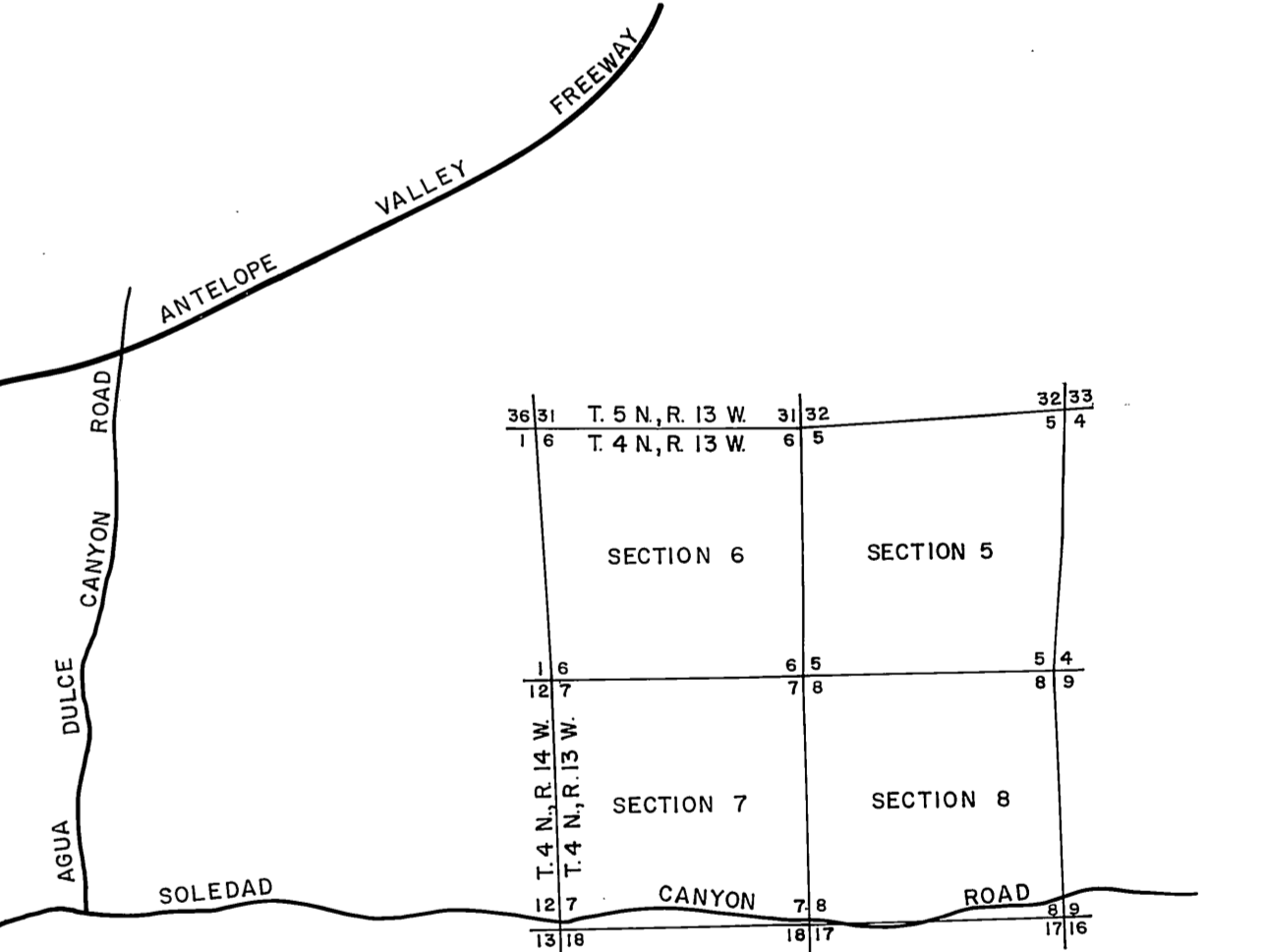
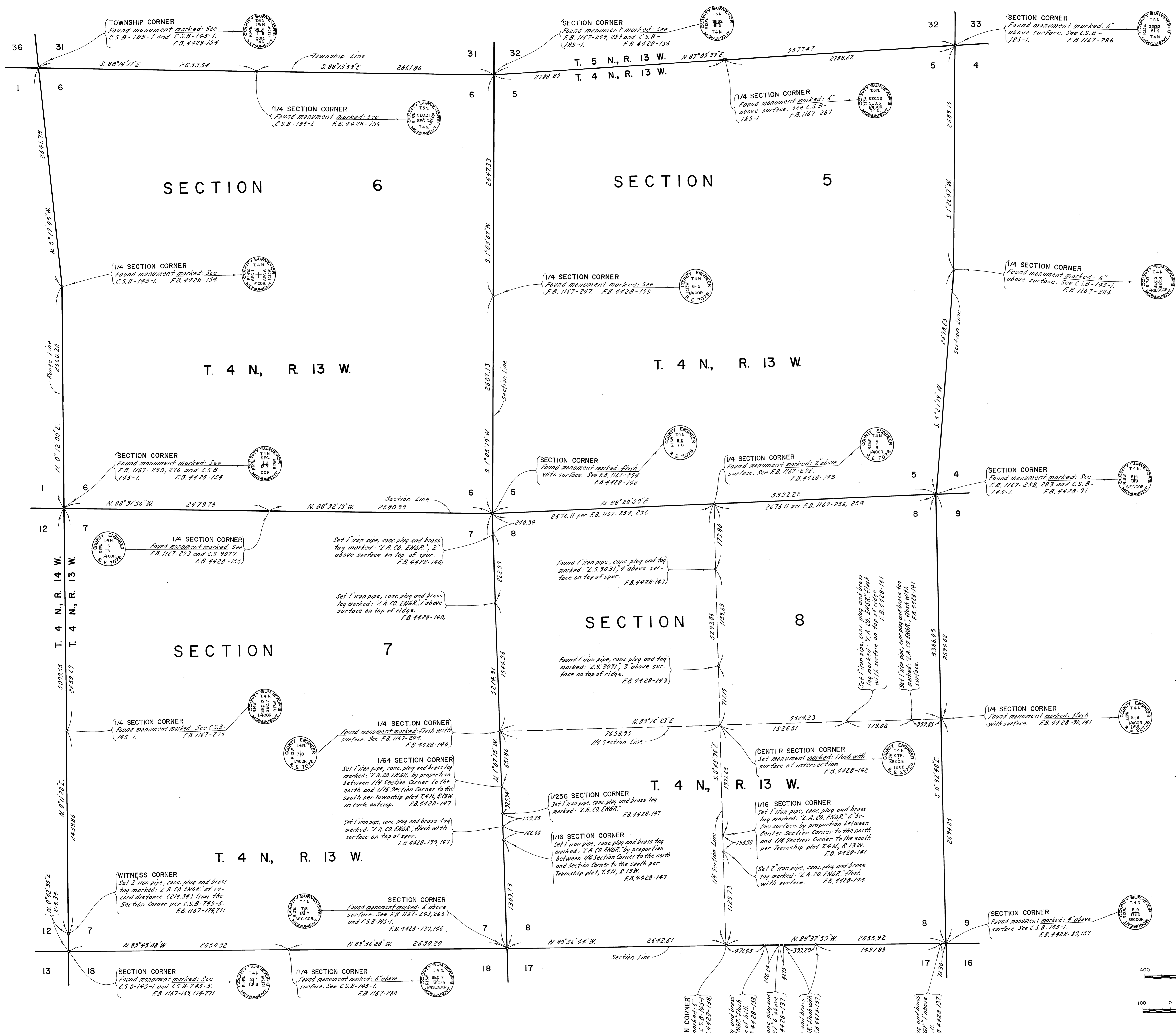
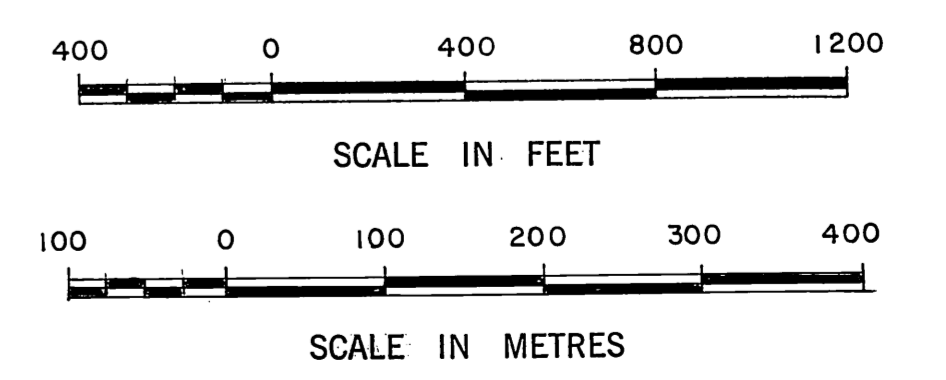


244-247



VICINITY MAP NOT TO SCALE



NOTE:  
THIS MAP WAS FILED FOR THE PURPOSE OF  
ESTABLISHING SECTION LINES. ALL OTHER  
CADASTRAL DATA HAS BEEN OMITTED.

COUNTY OF LOS ANGELES DEPARTMENT OF COUNTY ENGINEER-FACILITIES STEPHEN J. KOONCE-COUNTY ENGINEER PREPARED BY SURVEY-LAND DEVELOPMENT DIVISION GIBSON PHILIPS JR. ASSISTANT DEPUTY COUNTY ENGINEER SURVEYED BY D. BURKHOLDER, J.C. PIERCE CHECKED BY L. F. RAMOS DRAWN BY S. MASUDA	MAP OF <b>SECTIONS 5, 6, 7, &amp; 8</b> <b>T. 4 N., R. 13 W., S.B.M.</b>		COUNTY SURVEYOR'S MAP NO. <b>B-5447</b> SHEET 1 OF 1 SHEET FILED: <i>[Signature]</i> DEPUTY MARCH 1965 MAY 1982 REFERENCE F.B. 1167 F.B. 4428 JOB NUMBER 0302.01 INDEX MAP NO. 79
	BASIS OF BEARINGS THE WEST LINE OF SECTION 9, T. 4 N., R. 13 W. (S. 0°32'48"E) AS SHOWN ON C.S.B-5413		
	REVISION NO. BY DATE		
	COUNTY ENGINEER T. 4 N. R. 13 W. SEC. 5 SEC. 6 SEC. 7 SEC. 8		