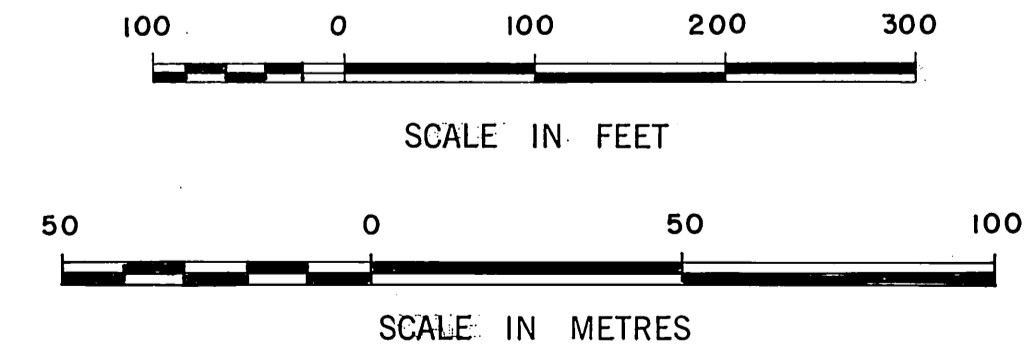
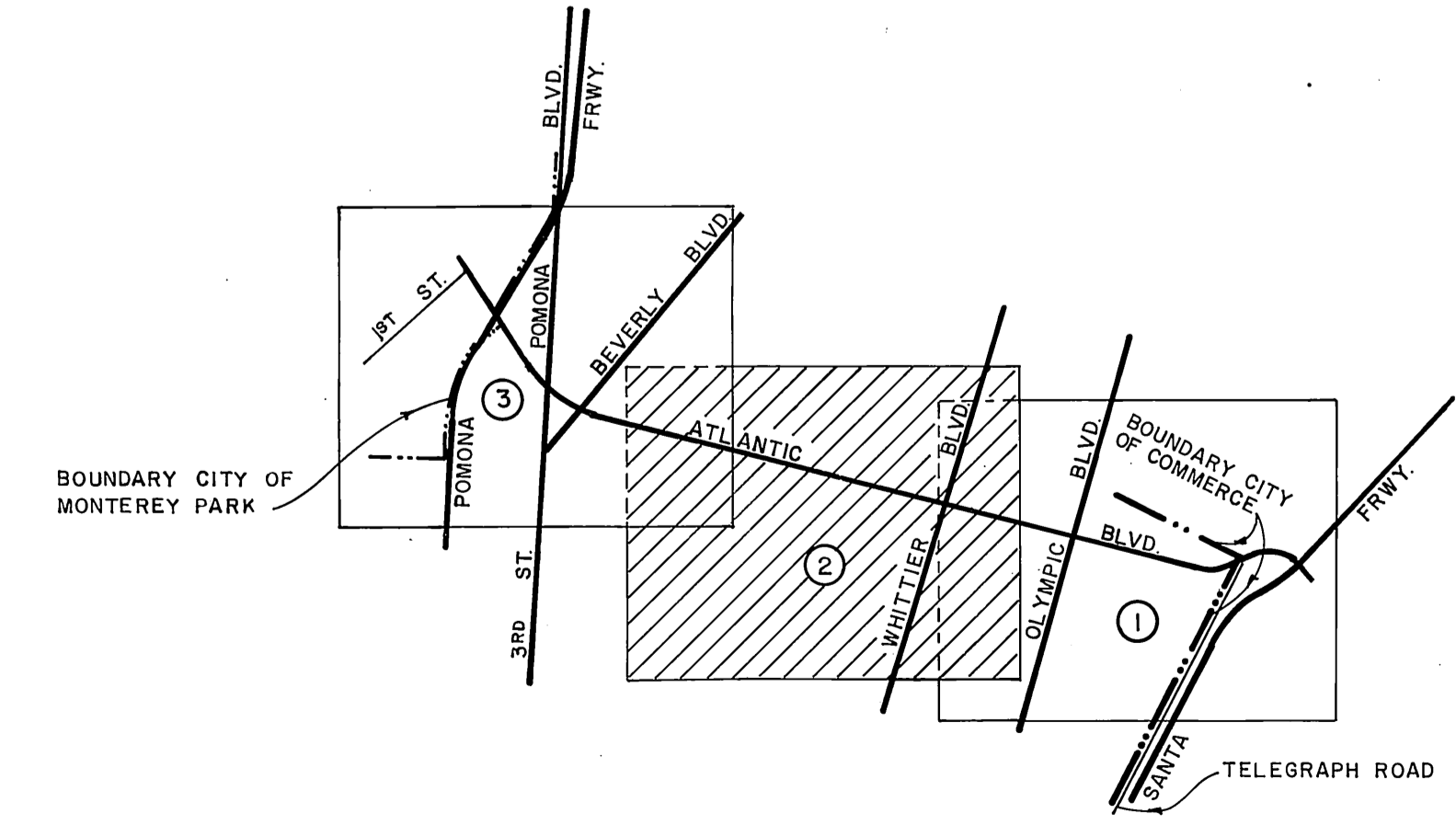
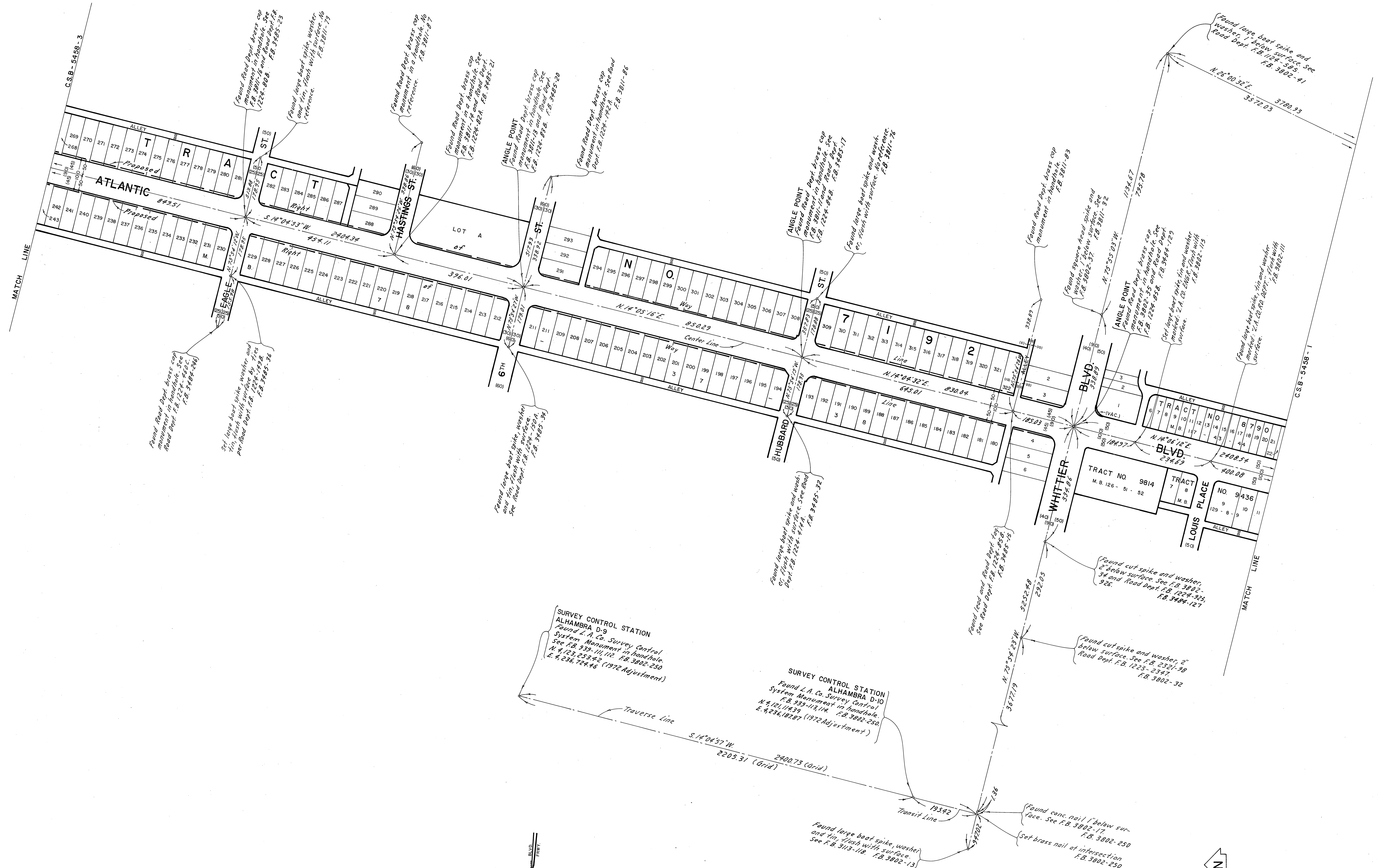


COUNTY OF LOS ANGELES DEPARTMENT OF COUNTY ENGINEER-FACILITIES STEPHEN J. KOONCE-COUNTY ENGINEER PREPARED BY SURVEY DIVISION RICHARD J. MITCHELL ASSISTANT DEPUTY COUNTY ENGINEER SURVEYED BY F.E. BROOKS, L.L. BROWN H.H. SPRIGGS CHECKED BY R. HILARIO DRAWN BY G. MASUDA	ALIGNMENT MAP OF ATLANTIC BLVD. FROM TELEGRAPH ROAD TO 1ST STREET BASIS OF BEARINGS CALIFORNIA COORDINATE SYSTEM, ZONE 7		COUNTY SURVEYOR'S MAP NO. B-5458 SHEET 1 OF 3 SHEETS FILED: <i>Decker</i> 4 19 83 <i>R.J. Monte Lull</i> SURVEYED MAY, 1972 - APRIL, 1973 REFERENCE F.B. 3483 F.B. 3802 F.B. 3485 F.B. 3811 JOB NUMBER 0220.11 INDEX MAP NO. 114-237	REVISION NO. BY DATE



COUNTY OF LOS ANGELES DEPARTMENT OF COUNTY ENGINEER-FACILITIES STEPHEN J. KOONCE-COUNTY ENGINEER PREPARED BY SURVEY DIVISION RICHARD J. MITCHELL ASSISTANT DEPUTY COUNTY ENGINEER SURVEYED BY FEBROOKS, L.L. BROWN H.H. SPRIGGS CHECKED BY R. HILARIO DRAWN BY G. MASUYA	ALIGNMENT MAP OF ATLANTIC BLVD. FROM TELEGRAPH ROAD TO 1ST STREET BASIS OF BEARINGS CALIFORNIA COORDINATE SYSTEM, ZONE 7		COUNTY SURVEYOR'S MAP NO. B-5458 SHEET 2 OF 3 SHEETS FILED: <i>Oct 14 1973</i> <i>Dr. J. Mitchell</i> DEPUTY SURVEYED MAY, 1972 - APRIL, 1973 REFERENCE F.B. 3485 F.B. 3802 F.B. 3485 F.B. 3811 JOB NUMBER 022011 INDEX MAP NO. 114-237	REVISION NO. BY DATE

