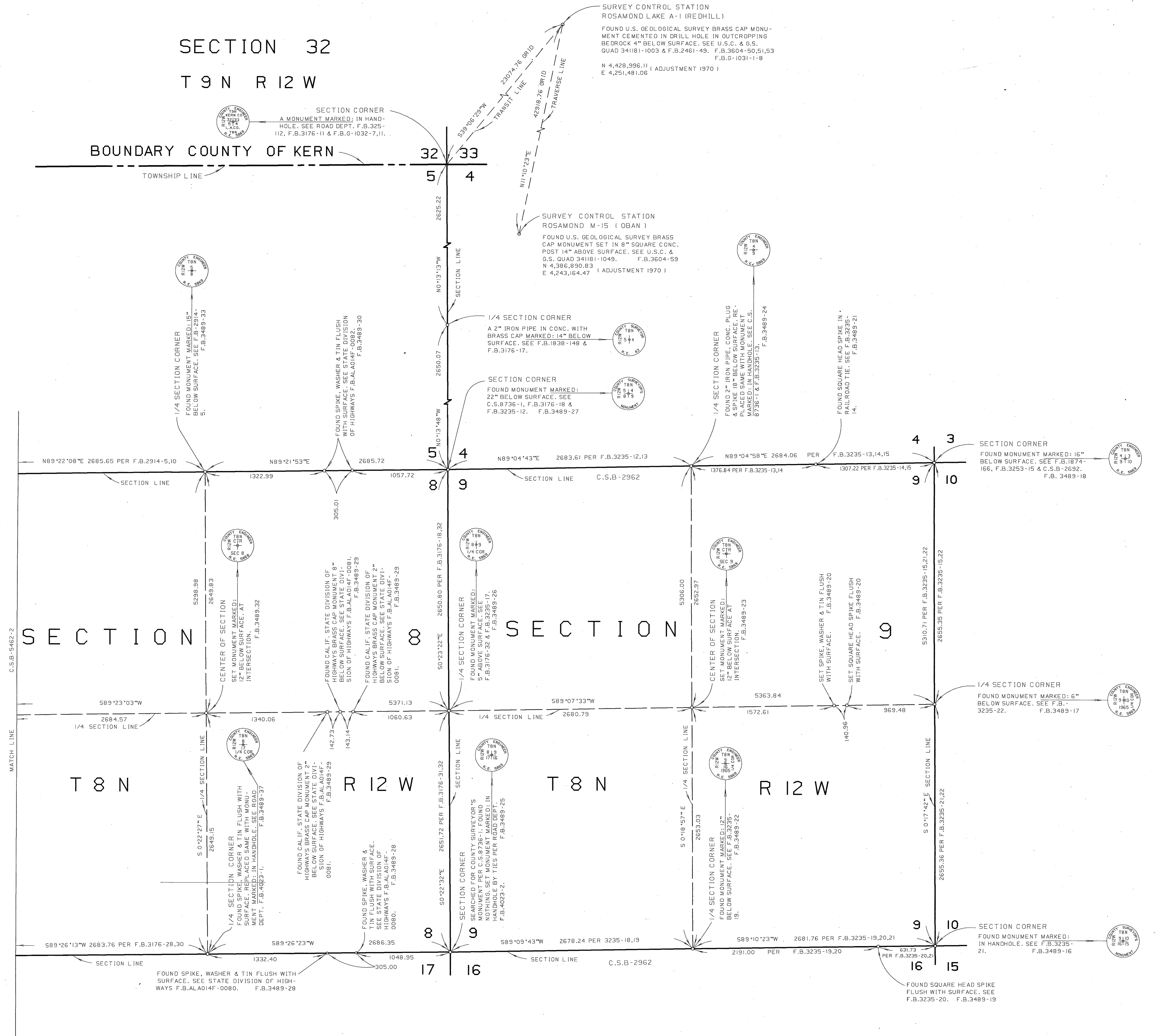


1-5042-B-2485-1

SECTION 32  
T 9 N R 12 W

BOUNDARY COUNTY OF KERN



SURVEY CONTROL STATION  
ROSAMOND LAKE A-1 (REDHILL)  
FOUND U.S. GEOLOGICAL SURVEY BRASS CAP MONUMENT CEMENTED IN DRILL HOLE IN OUTCROPPING BEDROCK 4" BELOW SURFACE. SEE U.S.C. & G.S. QUAD 34181-1003 & F.B.2461-49. F.B.3604-50,51,53 N 4,428,996.11 (ADJUSTMENT 1970) E 4,251,481.06

SURVEY CONTROL STATION  
ROSAMOND M-15 (OBAN)  
FOUND U.S. GEOLOGICAL SURVEY BRASS CAP MONUMENT SET IN 8" SQUARE CONC. POST 14" ABOVE SURFACE. SEE U.S.C. & G.S. QUAD 34181-1049. F.B.3604-59 N 4,386,890.83 E 4,243,164.47 (ADJUSTMENT 1970)

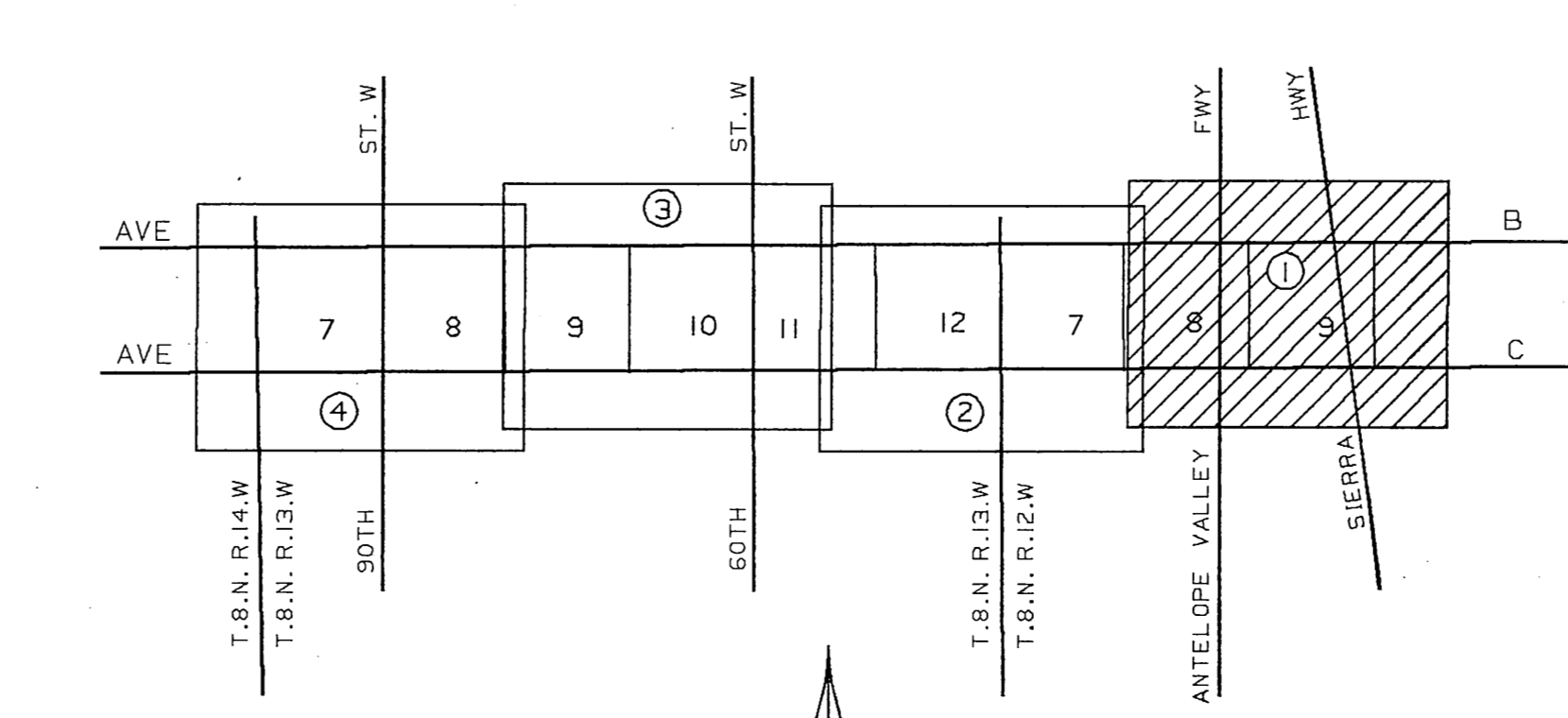
C.S.B. 5462-2  
MATCH LINE

T 8 N

R 12 W

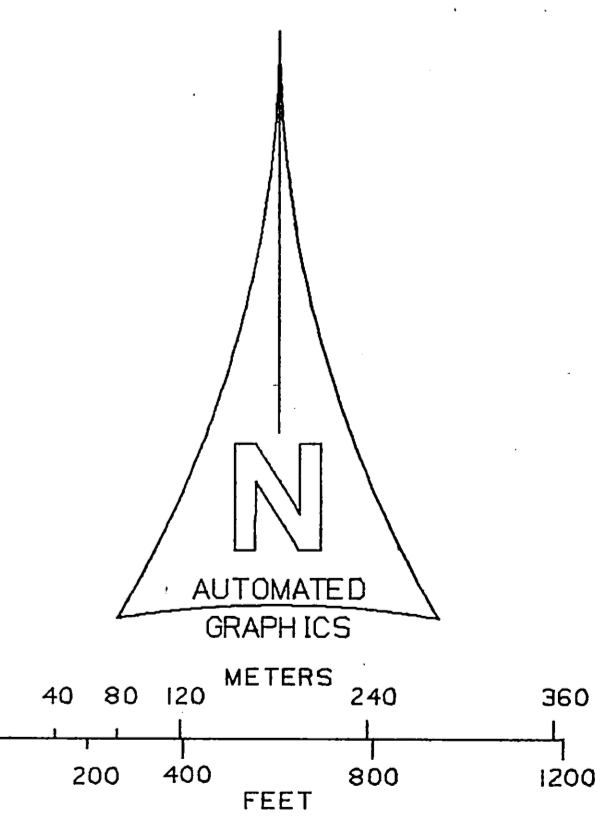
T 8 N

R 12 W



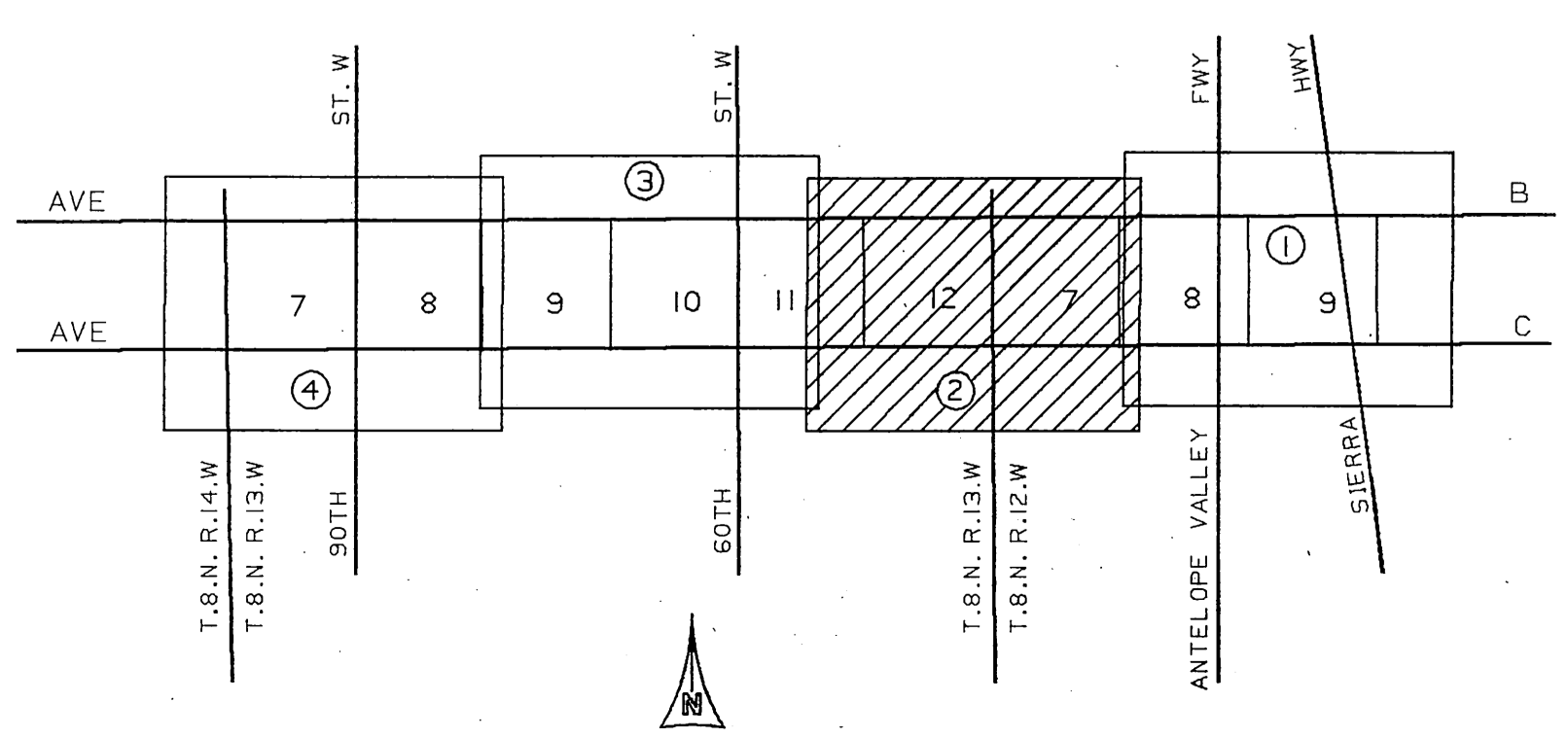
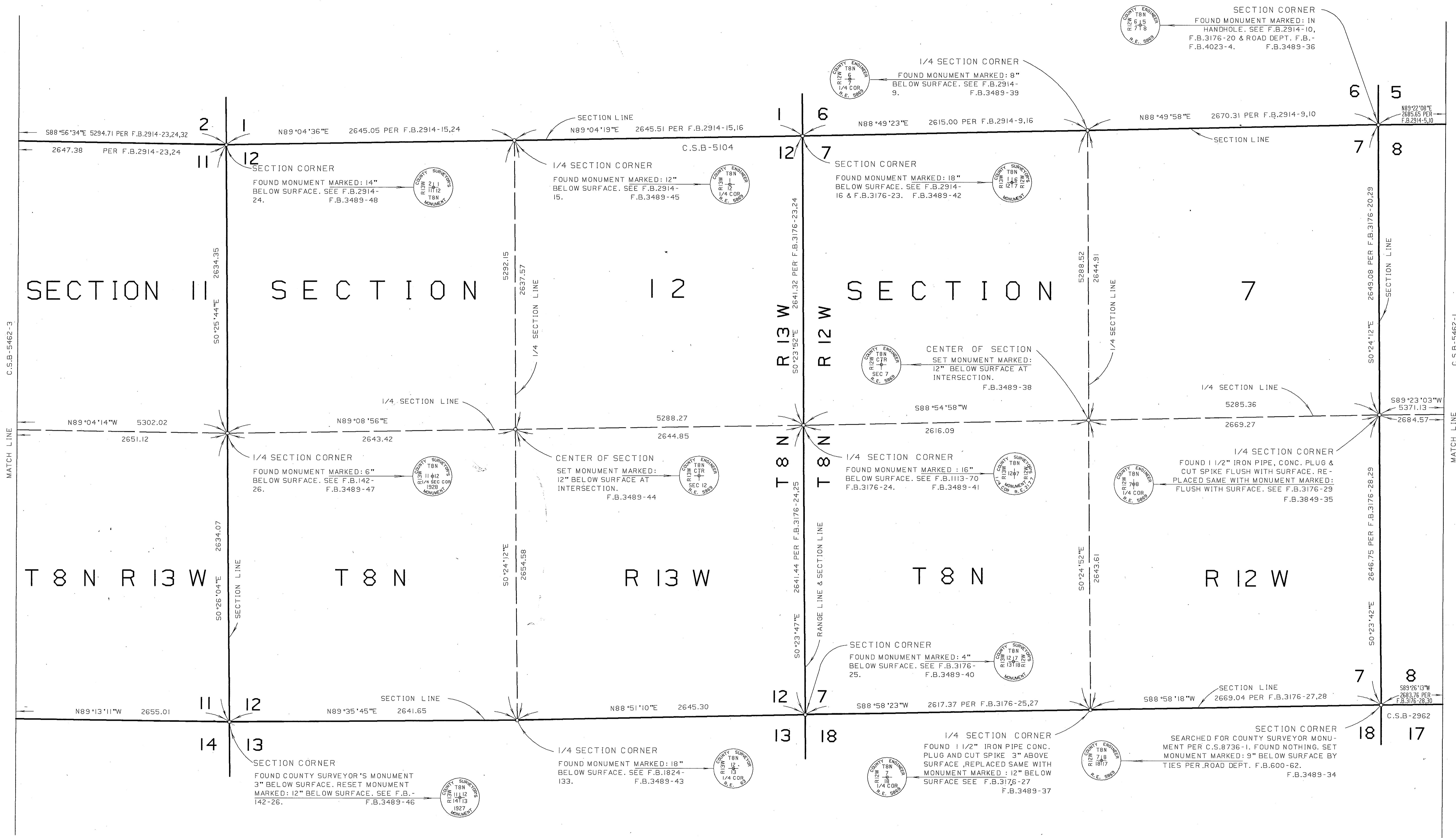
INDEX MAP  
NOT TO SCALE

NOTE :  
THIS MAP WAS FILED FOR THE PURPOSE OF ESTABLISHING SECTION LINES. ALL OTHER CADASTRAL DATA HAS BEEN OMITTED.

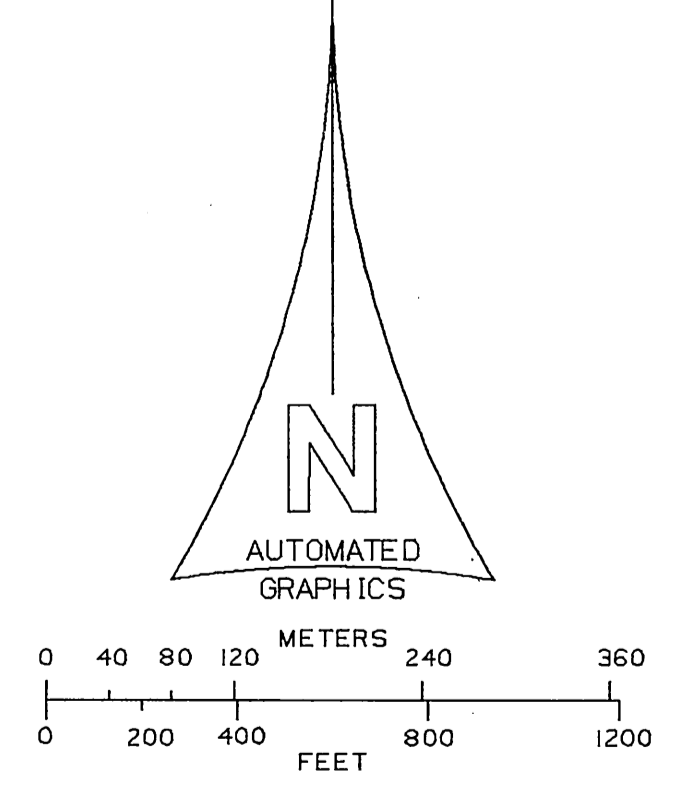


COUNTY OF LOS ANGELES DEPARTMENT OF PUBLIC WORKS T.A. TIDEMANSON - COUNTY ENGINEER PREPARED BY MAPPING DIVISION ARMANDO CID DIVISION ENGINEER SURVEYED BY J. MENDONCA CHECKED BY B. HILARIO DRAWN BY G. MASUDA	MAP OF <b>SECTIONS 7, 8 &amp; 9</b> <b>T. 8 N. R. 12 W. S.B.M.</b> <b>SECTIONS 7, 8, 9, 10, 11 &amp; 12</b> <b>T. 8 N. R. 13 W. S.B.M.</b> BASIS OF BEARINGS CALIFORNIA COORDINATE SYSTEM, ZONE 7		COUNTY SURVEYOR'S MAP NO <b>B-5462</b> SHEET 1 OF 4 SHEETS FILED: 5/24/1970 DEPUTY SURVEYED JULY 1969 - SEPT. 1970 REFERENCE F.B.G-1031 F.B.3489 F.B.3604 F.B.G-1032 F.B.3862 F.B.3176 JOB NUMBER 0208-11 INDEX MAP NO 71
	COUNTY ENGINEER T. 8 N. R. 12 W. S. B. M.		
	COUNTY ENGINEER T. 8 N. R. 13 W. S. B. M.		
	COUNTY ENGINEER T. 8 N. R. 12 W. S. B. M.		

1-5042-B-2485-1

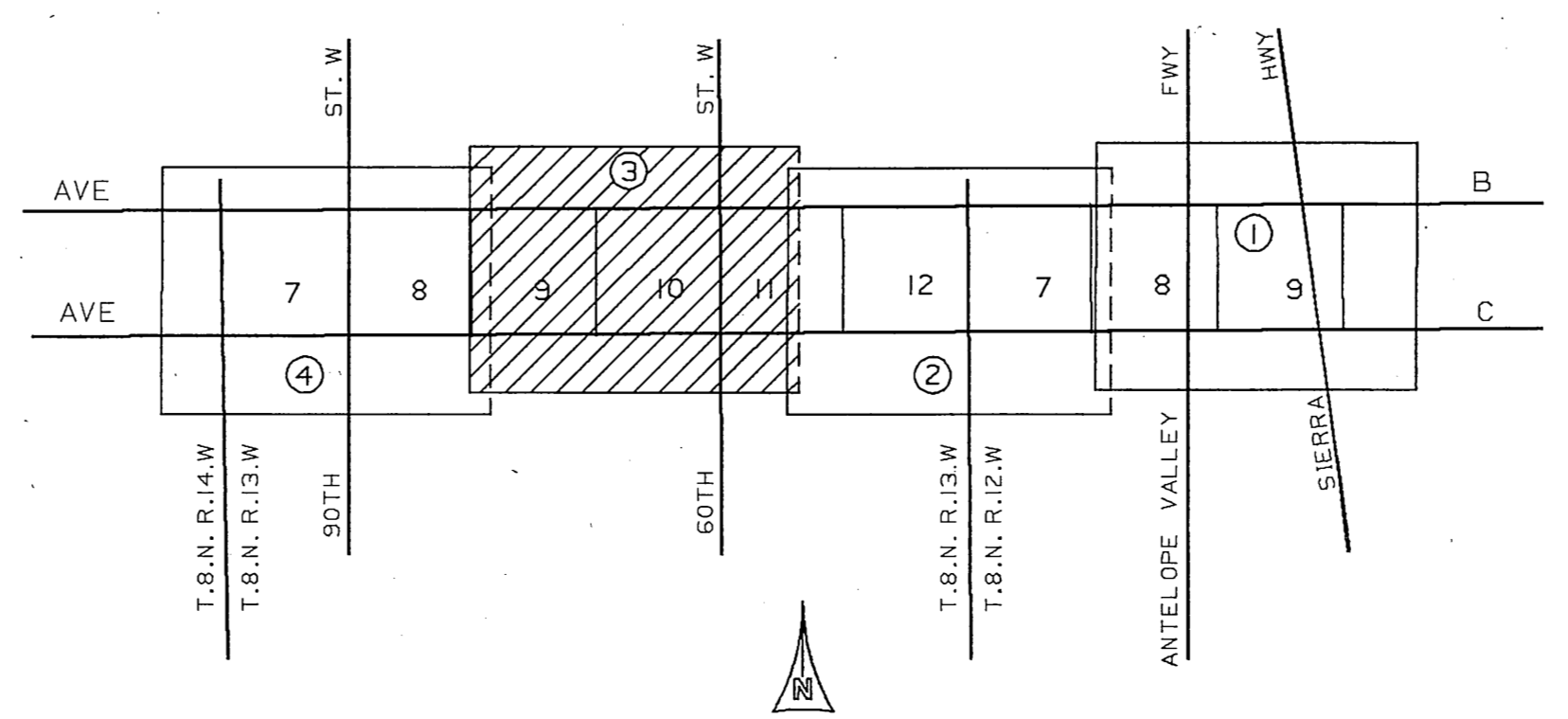
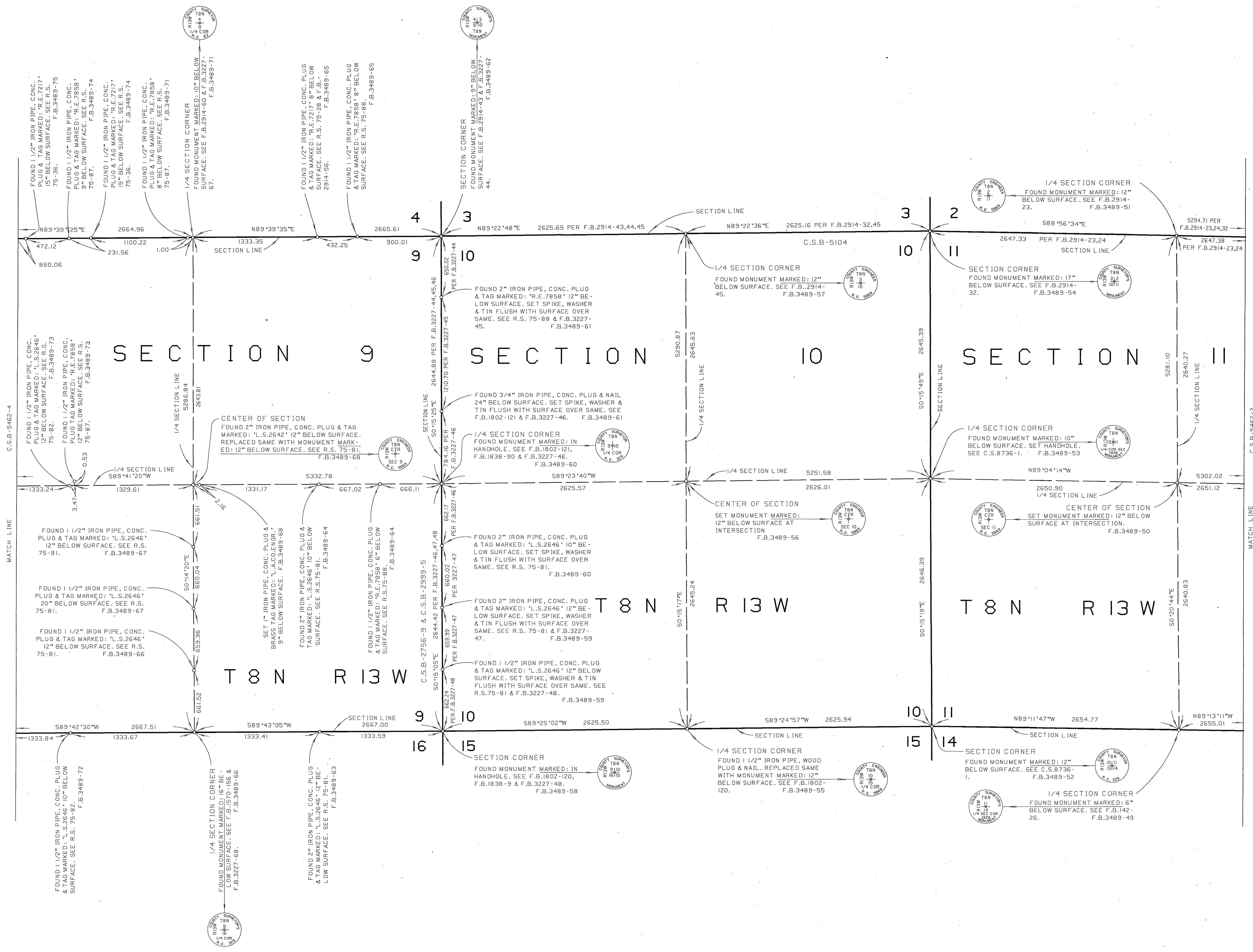


NOTE :  
THIS MAP WAS FILED FOR THE PURPOSE OF  
ESTABLISHING SECTION LINES. ALL OTHER  
CADASTRAL DATA HAS BEEN OMITTED.



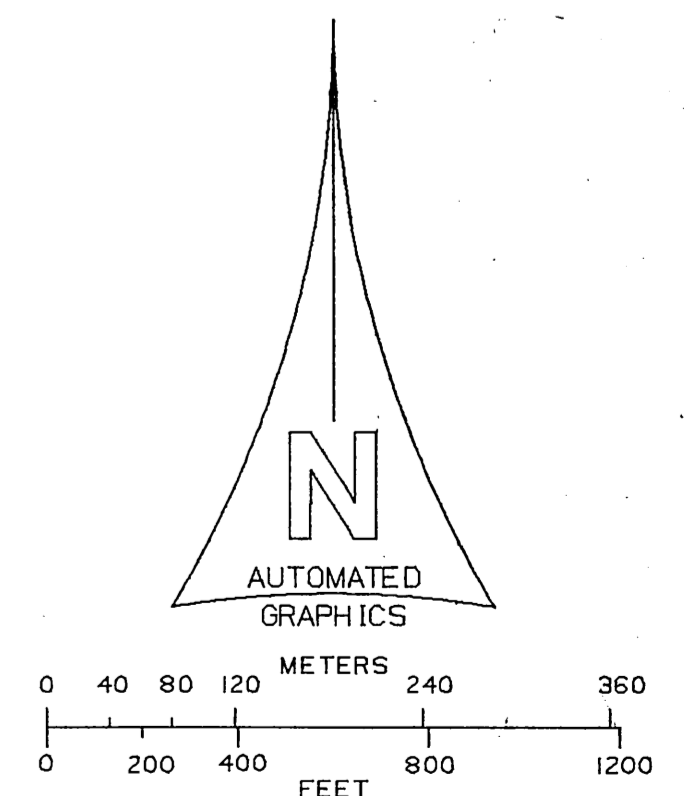
COUNTY OF LOS ANGELES DEPARTMENT OF PUBLIC WORKS T.A. IDEMANSON - COUNTY ENGINEER PREPARED BY MAPPING DIVISION ARMANDO CID DIVISION ENGINEER SURVEYED BY J. MENDONCA CHECKED BY P. HILARIO DRAWN BY G. MASUDA	MAP OF <b>SECTIONS 7, 8 &amp; 9</b> <b>T. 8 N. R. 12 W. S. B. M.</b> <b>SECTIONS 7, 8, 9, 10, 11 &amp; 12</b> <b>T. 8 N. R. 13 W. S. B. M.</b>		COUNTY SURVEYOR'S MAP NO <b>B-5462</b> SHEET 2 OF 4 SHEETS FILED: <i>5/21/1970</i> DEPT.
	BASIS OF BEARINGS CALIFORNIA COORDINATE SYSTEM, ZONE 7		SURVEYED JULY 1963 - SEPT. 1970 REFERENCE F.B.G-1031 F.B.3489 F.B.3604 F.B.G-1032 F.B.3862 F.B.3176 JOB NUMBER 0208.11 INDEX MAP NO 71
	COUNTY SURVEYOR'S MAP NO <b>B-5462-1</b>		
	SHEET 2 OF 4 SHEETS		





INDEX MAP NOT TO SCALE

NOTE :  
THIS MAP WAS FILED FOR THE PURPOSE OF  
ESTABLISHING SECTION LINES. ALL OTHER  
CADASTRAL DATA HAS BEEN OMITTED.



COUNTY OF LOS ANGELES <b>DEPARTMENT OF PUBLIC WORKS</b> T.A.TIDEMANSON - COUNTY ENGINEER PREPARED BY MAPPING DIVISION ARMANDO CID DIVISION ENGINEER SURVEYED BY <u>J. MENDONCA</u> CHECKED BY <u>J. HILARIO</u> DRAWN BY <u>G. MASUDA</u>	<b>MAP OF</b> <b>SECTIONS 7,8 &amp; 9</b> <b>T.8 N. R.12.W. S.B.M.</b> <b>SECTIONS 7,8,9,10,11 &amp; 12</b> <b>T.8 N. R.13 W. S.B.M.</b> BASIS OF BEARINGS CALIFORNIA COORDINATE SYSTEM, ZONE 7		COUNTY SURVEYOR'S MAP NO <b>B-5462</b> SHEET 3 OF 4 SHEETS FILED: <u>5/21/1984</u> <u>AR</u> SURVEYED JULY 1969 - SEPT. 1970 REFERENCE F.B.0-1031 F.B.3489 F.B.3604 F.B.0-1032 F.B.3862 F.B.3176 JOB NUMBER 0208.11 INDEX MAP NO 71
	COUNTY SURVEYOR'S MAP NO <b>B-5462</b> SHEET 3 OF 4 SHEETS FILED: <u>5/21/1984</u> <u>AR</u> SURVEYED JULY 1969 - SEPT. 1970 REFERENCE F.B.0-1031 F.B.3489 F.B.3604 F.B.0-1032 F.B.3862 F.B.3176 JOB NUMBER 0208.11 INDEX MAP NO 71		
	COUNTY SURVEYOR'S MAP NO <b>B-5462</b> SHEET 3 OF 4 SHEETS FILED: <u>5/21/1984</u> <u>AR</u> SURVEYED JULY 1969 - SEPT. 1970 REFERENCE F.B.0-1031 F.B.3489 F.B.3604 F.B.0-1032 F.B.3862 F.B.3176 JOB NUMBER 0208.11 INDEX MAP NO 71		
	COUNTY SURVEYOR'S MAP NO <b>B-5462</b> SHEET 3 OF 4 SHEETS FILED: <u>5/21/1984</u> <u>AR</u> SURVEYED JULY 1969 - SEPT. 1970 REFERENCE F.B.0-1031 F.B.3489 F.B.3604 F.B.0-1032 F.B.3862 F.B.3176 JOB NUMBER 0208.11 INDEX MAP NO 71		

