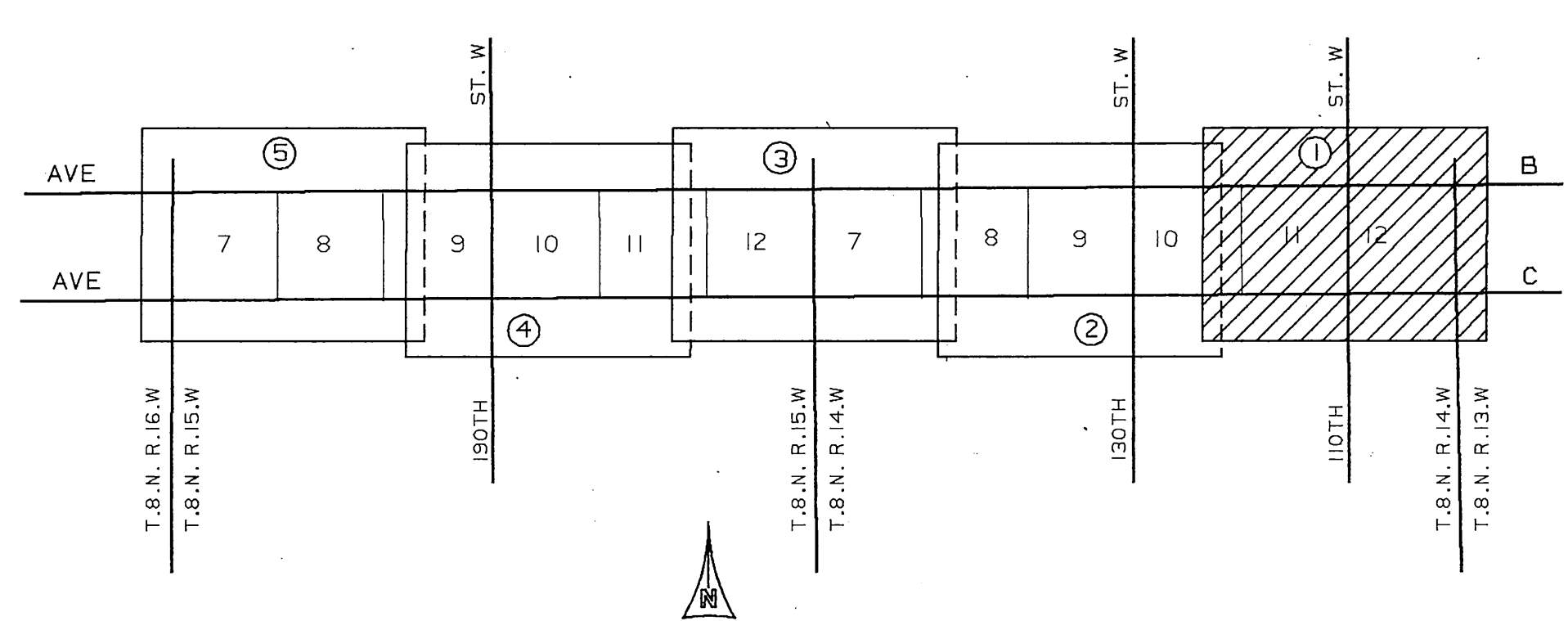
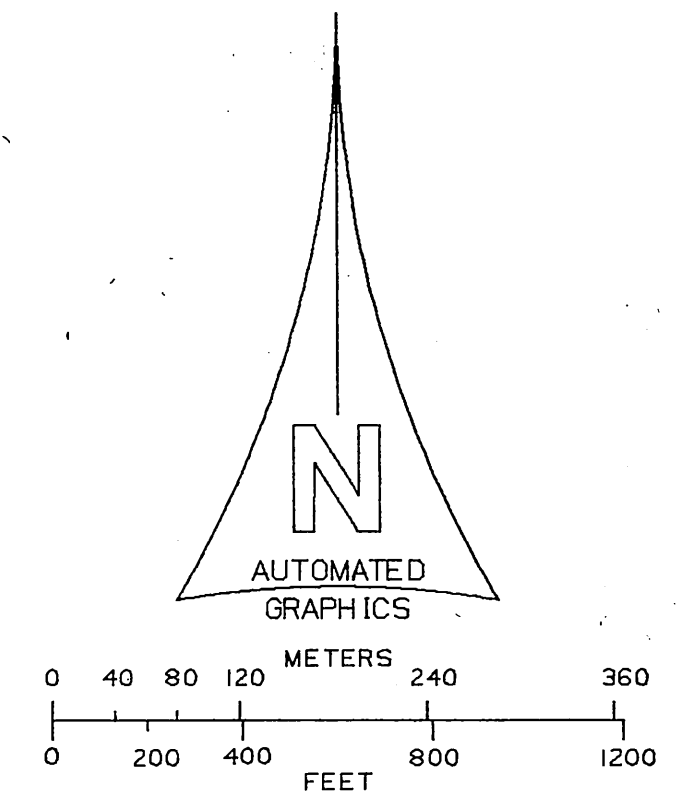


MATCH LINE C.S.B. 5463-2

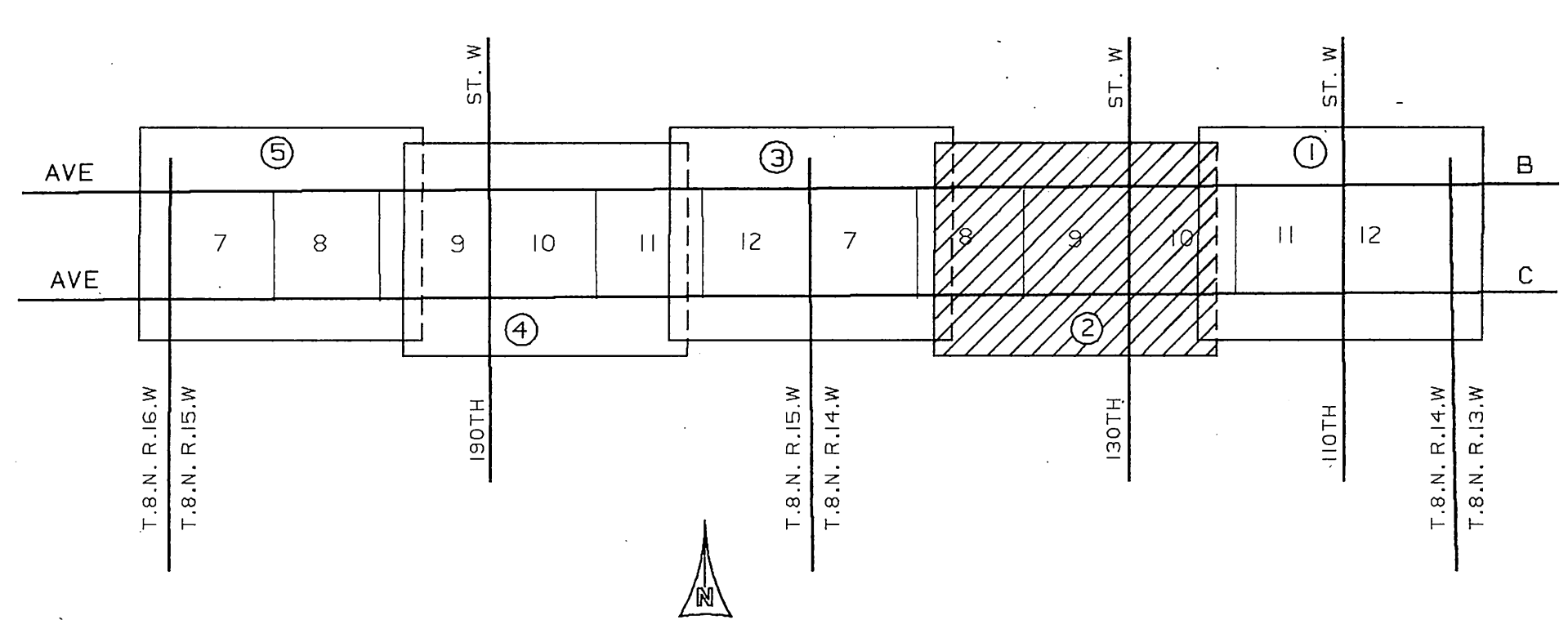
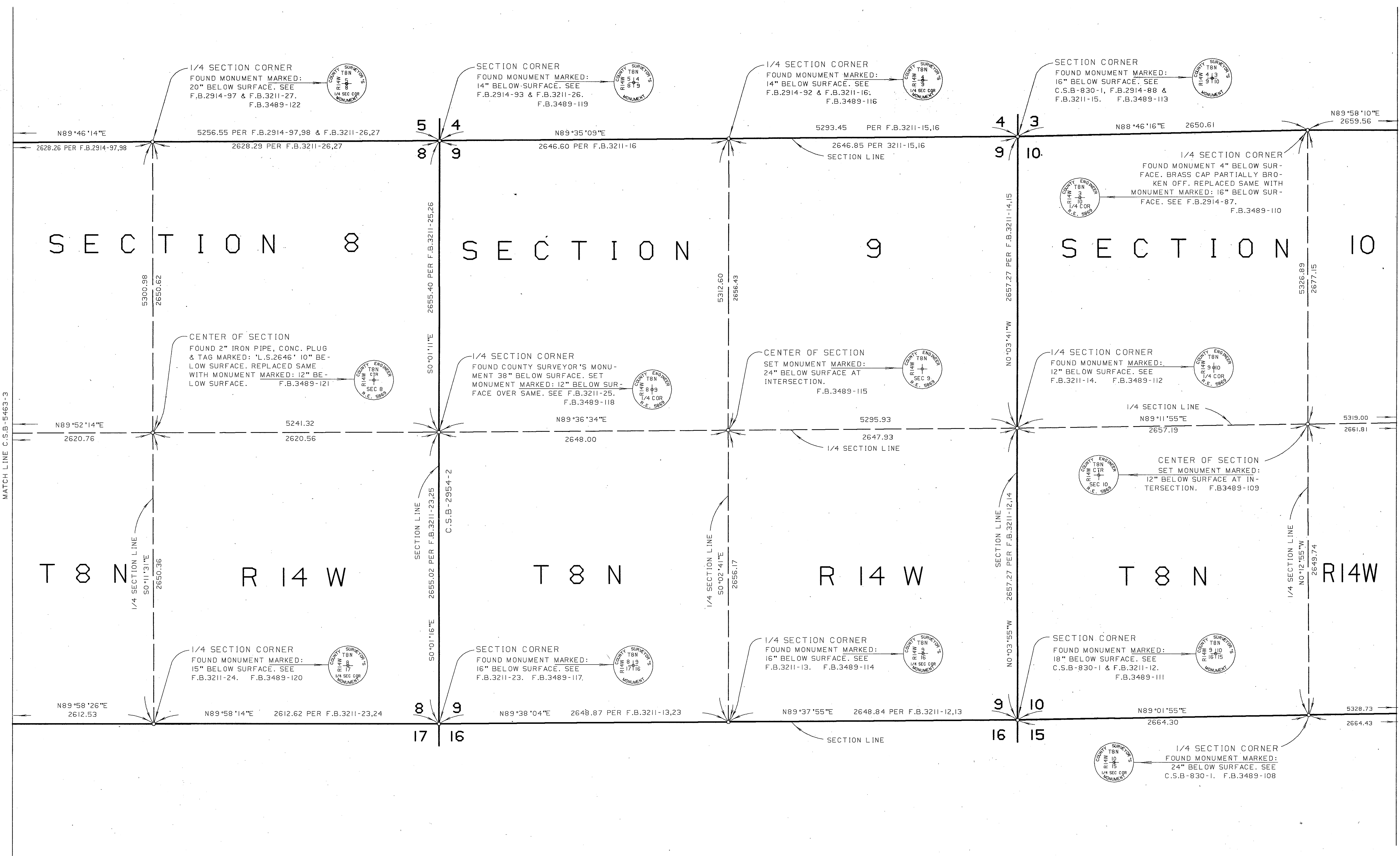


INDEX MAP NOT TO SCALE

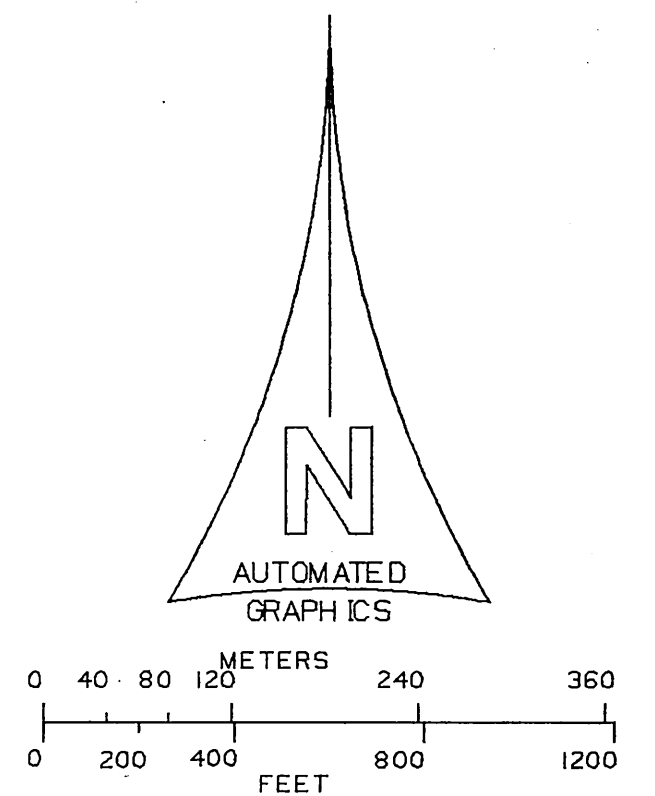
NOTE :
 THIS MAP WAS FILED FOR THE PURPOSE OF
 ESTABLISHING SECTION LINES. ALL OTHER
 CADASTRAL DATA HAS BEEN OMITTED.



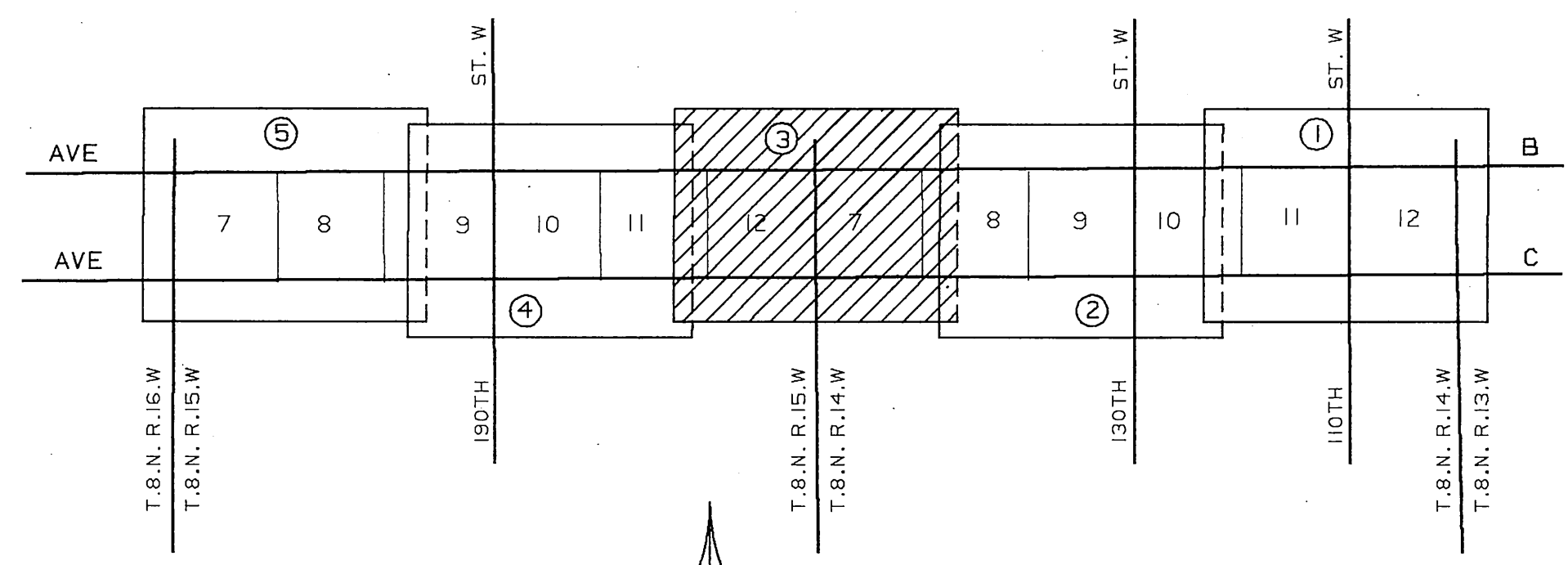
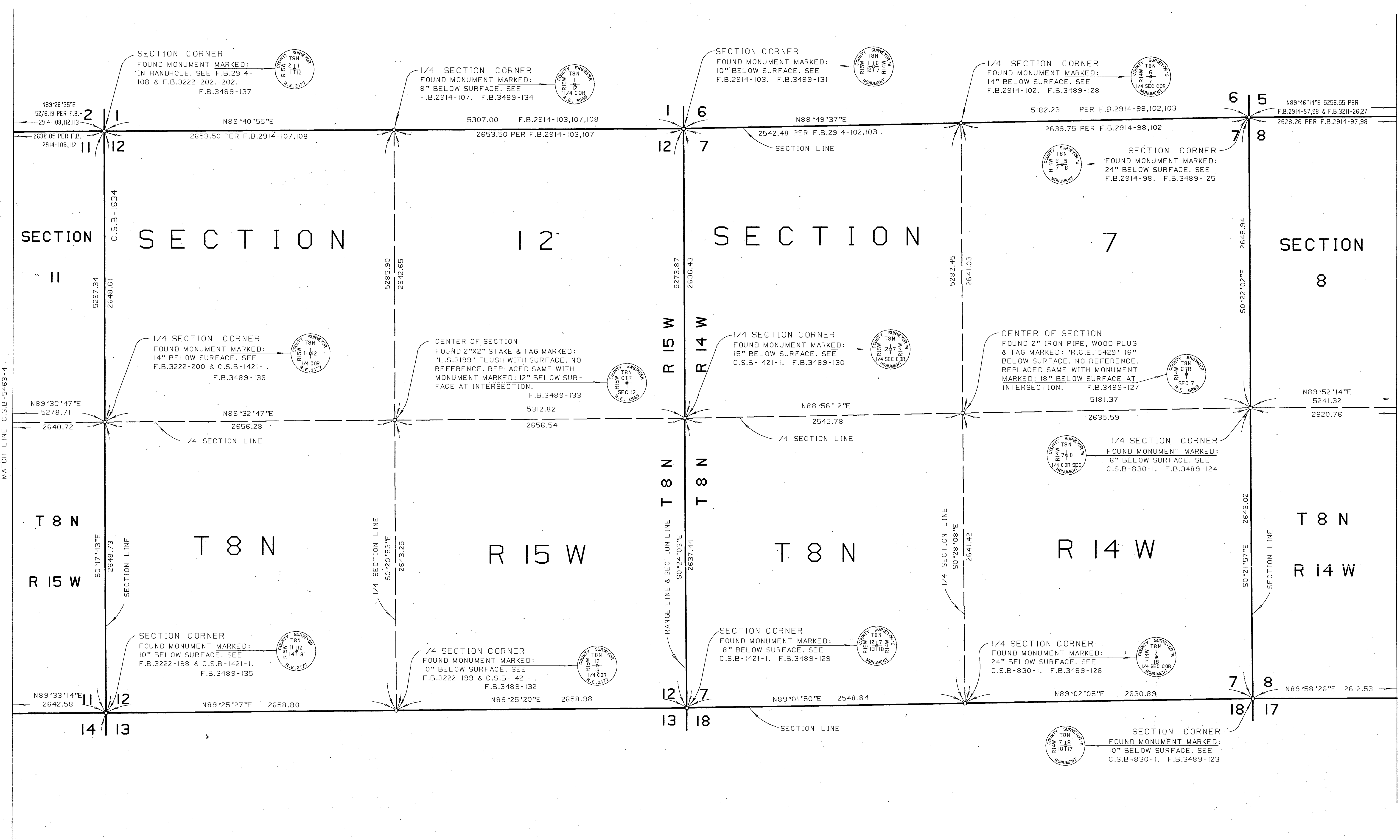
COUNTY OF LOS ANGELES DEPARTMENT OF PUBLIC WORKS T.A.TIGEMANSON - COUNTY ENGINEER PREPARED BY MAPPING DIVISION ARMANDO CID DIVISION ENGINEER SURVEYED BY J. MENDOZA CHECKED BY P. WILABLO DRAWN BY G. MASUDA	MAP OF SECTIONS 7,8,9,10,11 & 12 T.8 N. R.14 W. S.B.M. SECTIONS 7,8,9,10,11 & 12 T.8 N. R.15 W. S.B.M.	COUNTY SURVEYOR'S MAP NO B-5463 SHEET 1 OF 5 SHEETS FILED: <i>5/21/80</i> <i>Armando Cid</i> SURVEYED JULY 1969 - SEPT. 1970 REFERENCE F.B. 3489 F.B. 3562 JOB NUMBER 0208.11 INDEX MAP NO 72.73
	BASIS OF BEARINGS CALIFORNIA COORDINATE SYSTEM, ZONE 7 AS SHOWN ON C.S.B-5462	



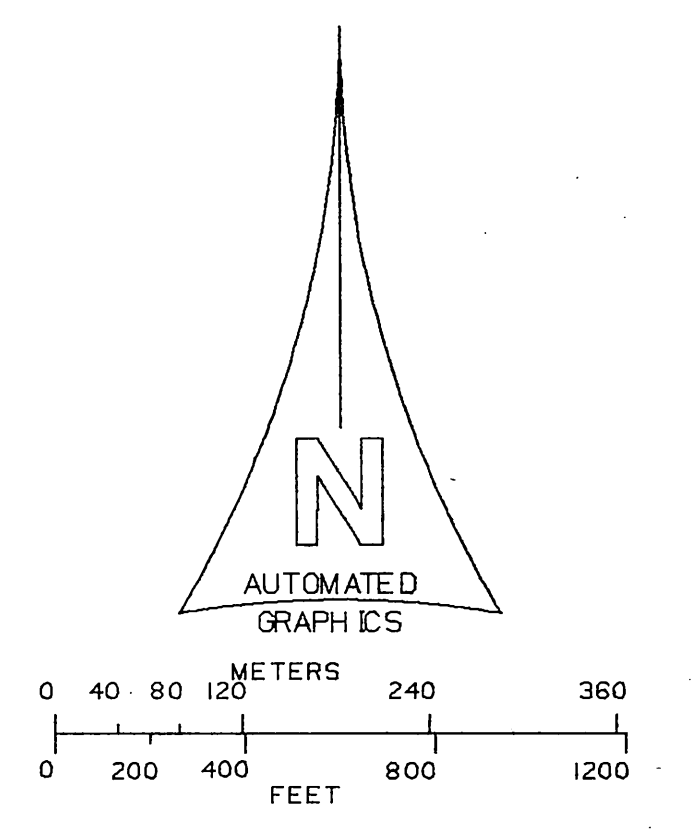
NOTE :
THIS MAP WAS FILED FOR THE PURPOSE OF
ESTABLISHING SECTION LINES. ALL OTHER
CADASTRAL DATA HAS BEEN OMITTED.



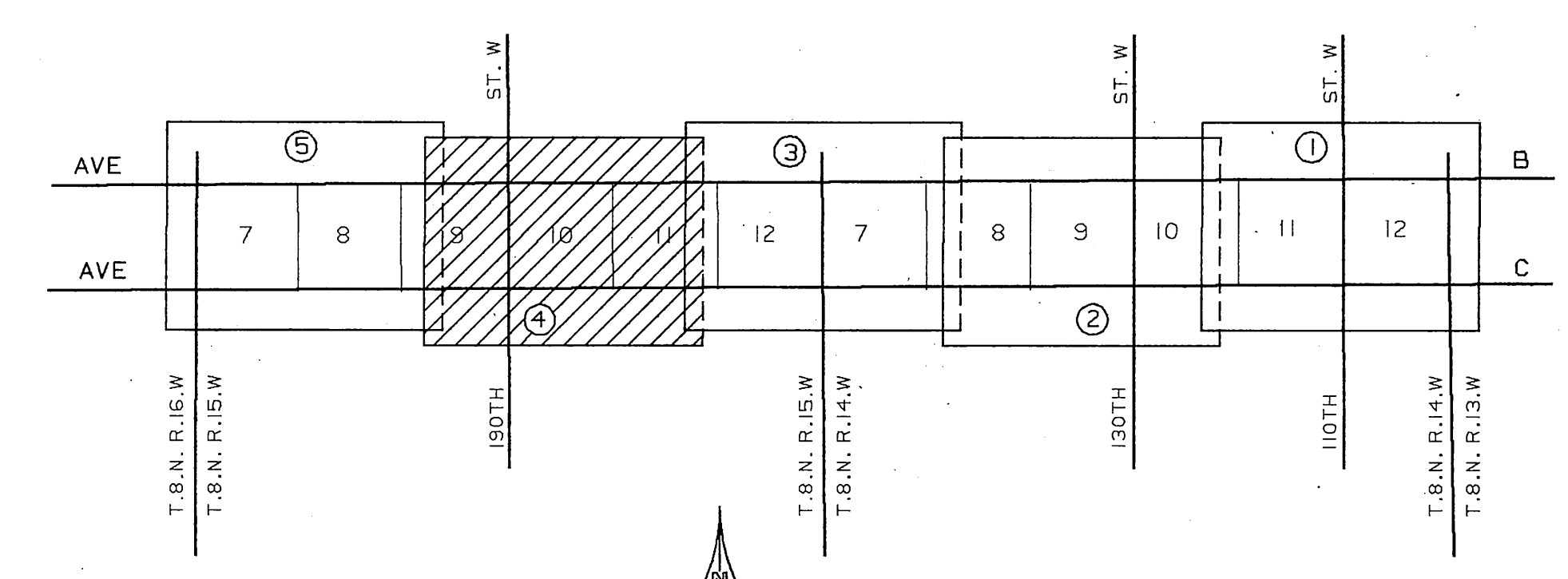
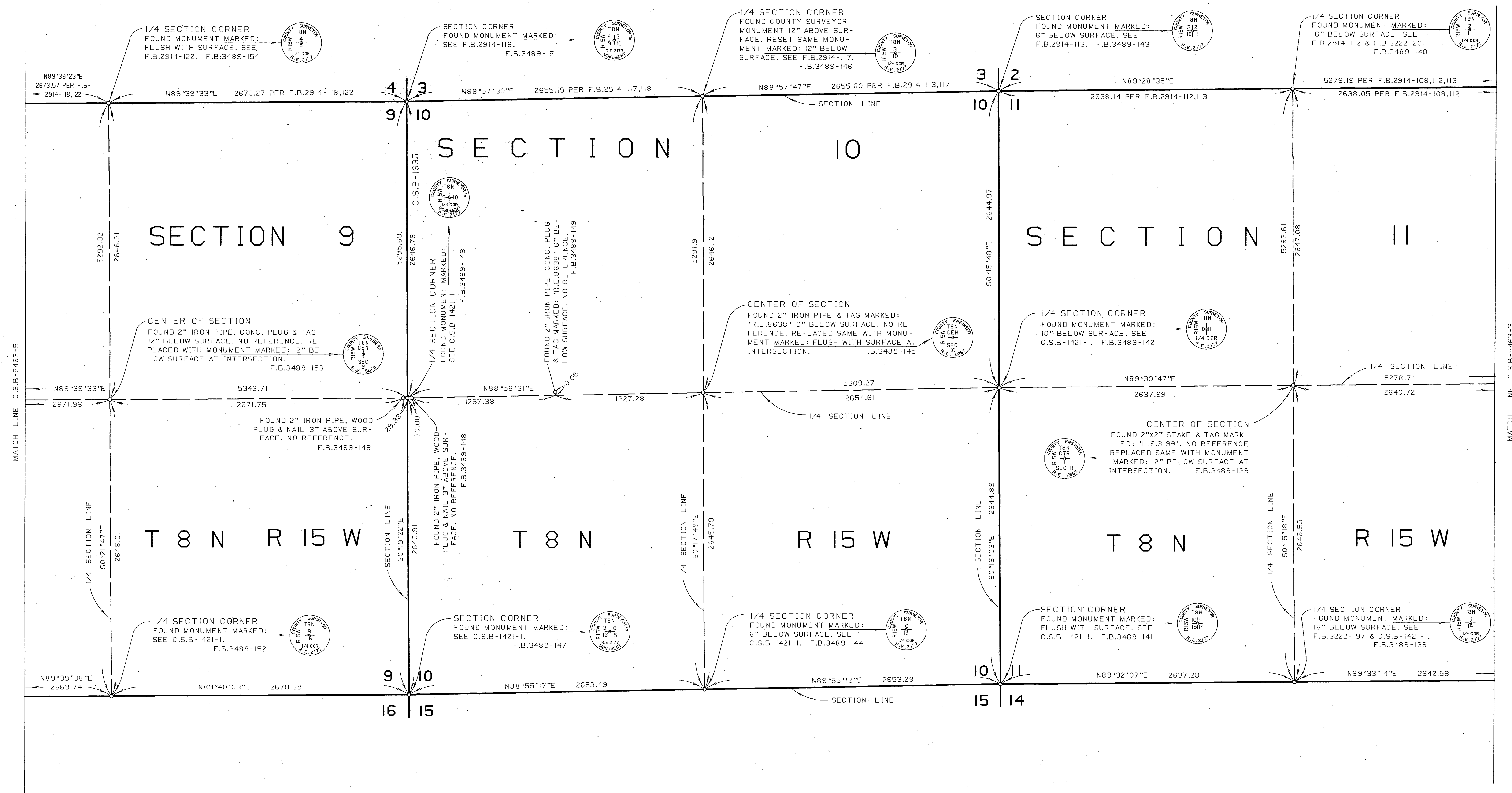
COUNTY OF LOS ANGELES DEPARTMENT OF PUBLIC WORKS T.A. TIDEMANSON - COUNTY ENGINEER PREPARED BY MAPPING DIVISION ARMANDO CID DIVISION ENGINEER SURVEYED BY J. MENDOZA CHECKED BY R. HILARIO DRAWN BY G. MASUDA	MAP OF SECTIONS 7,8,9,10,11 & 12 T.8 N. R.14 W. S.B.M. SECTIONS 7,8,9,10,11 & 12 T.8 N. R.15 W. S.B.M.	COUNTY SURVEYOR'S MAP NO B-5463 SHEET 2 OF 5 SHEETS FILED: 5/21/1979 SURVEYED JULY 1969 - SEPT. 1970 REFERENCE F.B. 3489 F.B. 3882 JOB NUMBER 0208.11
	BASIS OF BEARINGS CALIFORNIA COORDINATE SYSTEM, ZONE 7 AS SHOWN ON C.S.B-5462	INDEX MAP NO 72,73



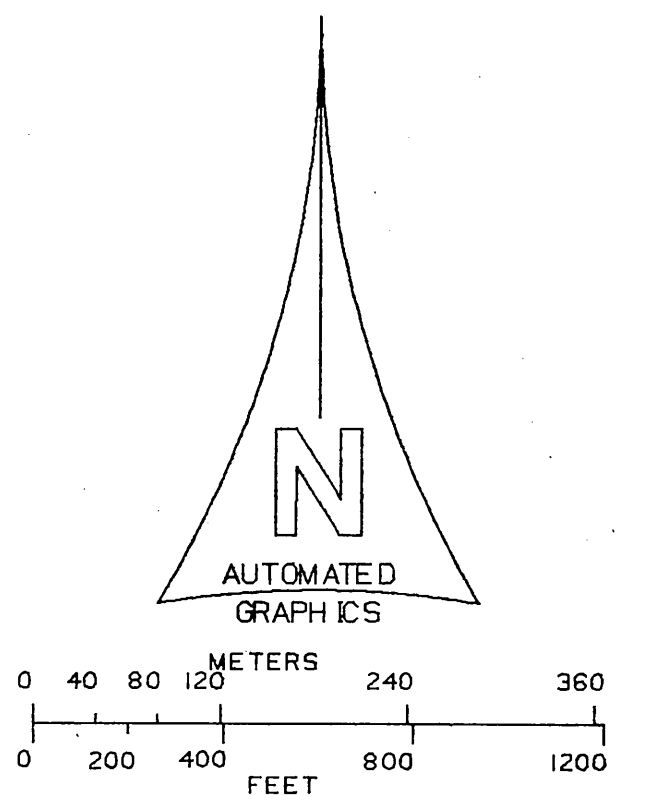
NOTE :
THIS MAP WAS FILED FOR THE PURPOSE OF
ESTABLISHING SECTION LINES. ALL OTHER
CADASTRAL DATA HAS BEEN OMITTED.



COUNTY OF LOS ANGELES DEPARTMENT OF PUBLIC WORKS T.A. DICEMANSON - COUNTY ENGINEER PREPARED BY MAPPING DIVISION ARMANDO CID DIVISION ENGINEER SURVEYED BY <u>J. MENDONCA</u> CHECKED BY <u>R. HILARIO</u> DRAWN BY <u>G. MASUDA</u>	MAP OF SECTIONS 7,8,9,10,11 & 12 T.8 N. R.14 W. S.B.M. SECTIONS 7,8,9,10,11 & 12 T.8 N. R.15 W. S.B.M.		COUNTY SURVEYOR'S MAP NO B-5463 SHEET 3 OF 5 SHEETS FILED: <u>5725-1985</u> <u>Armando</u> DEPUTY JULY 1983 - SEPT. 1970 REFERENCE F.B.3489 F.B.3862
	BASIS OF BEARINGS CALIFORNIA COORDINATE SYSTEM, ZONE 7 AS SHOWN ON C.S.B-5462		JOB NUMBER 0208.11 INDEX MAP NO 72.73



NOTE :
THIS MAP WAS FILED FOR THE PURPOSE OF
ESTABLISHING SECTION LINES. ALL OTHER
CADASTRAL DATA HAS BEEN OMITTED.



COUNTY OF LOS ANGELES DEPARTMENT OF PUBLIC WORKS T.A. TIDEMANSON - COUNTY ENGINEER PREPARED BY MAPPING DIVISION ARMANDO CID DIVISION ENGINEER SURVEYED BY J. MENDOZA CHECKED BY B. HILARIO DRAWN BY S. MASUDA	MAP OF SECTIONS 7,8,9,10,11 & 12 T.8 N. R.14 W. S.B.M. SECTIONS 7,8,9,10,11 & 12 T.8 N. R.15 W. S.B.M.	COUNTY SURVEYOR'S MAP NO B-5463 SHEET 4 OF 5 SHEETS FILED: 8/21/88 DEPUTY SURVEYED JULY 1969 - SEPT. 1970 REFERENCE F.B. 3489 F.B. 3862 JOB NUMBER INDEX MAP NO 0208.11 72.73
	BASIS OF BEARINGS CALIFORNIA COORDINATE SYSTEM, ZONE 7 AS SHOWN ON C.S.B-5462	

