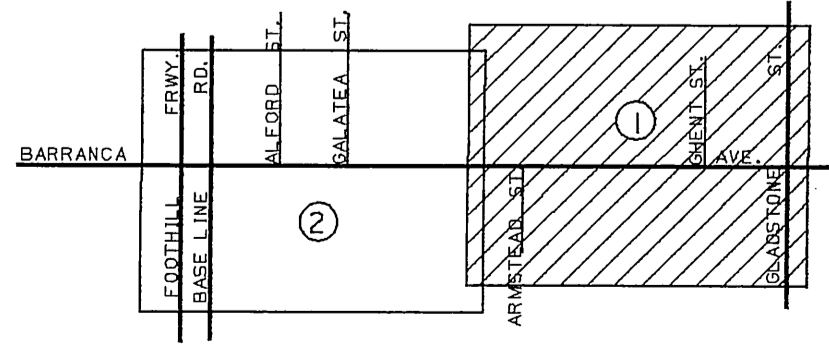
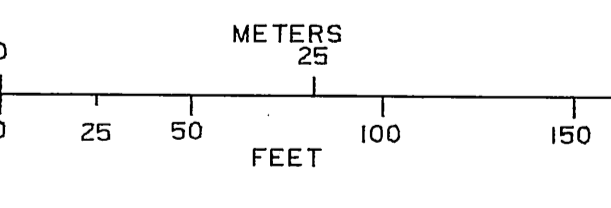
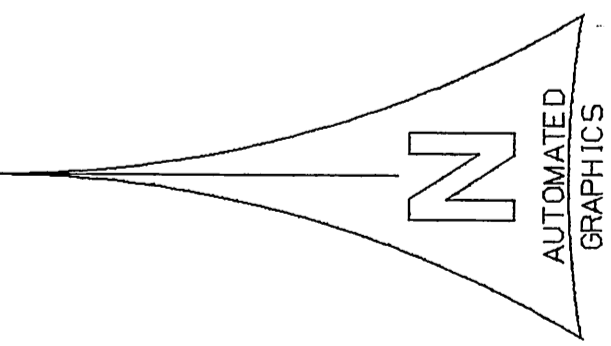


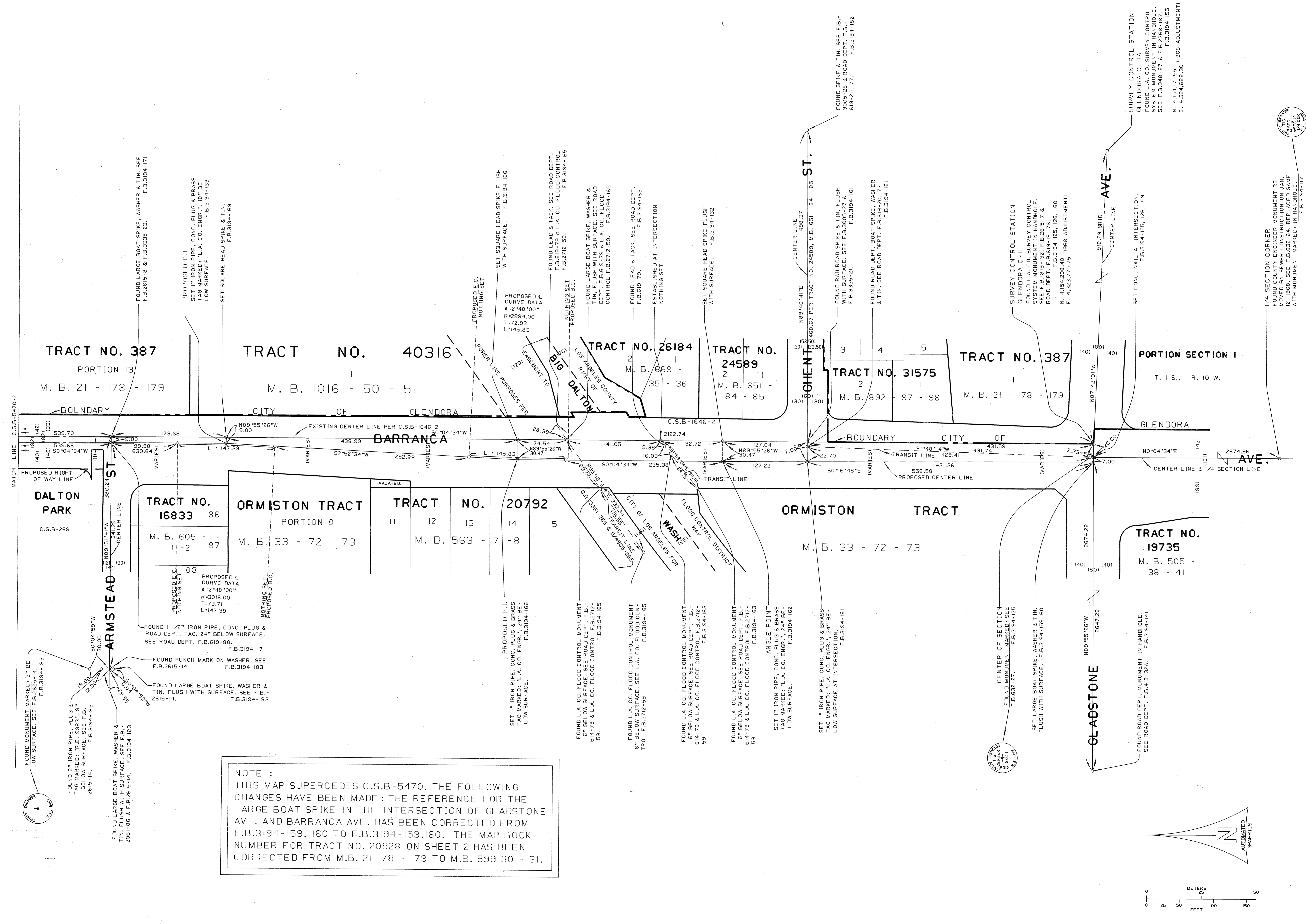
1/4 SECTION CORNER  
FOUND COUNTY ENGINEER MONUMENT RE-  
MOVED BY SEWER CONSTRUCTION ON JAN.  
1968. MONUMENT MARKED IN HANDHOLE.  
WITH MONUMENT MARKED IN HANDHOLE.  
F.B.3194-117



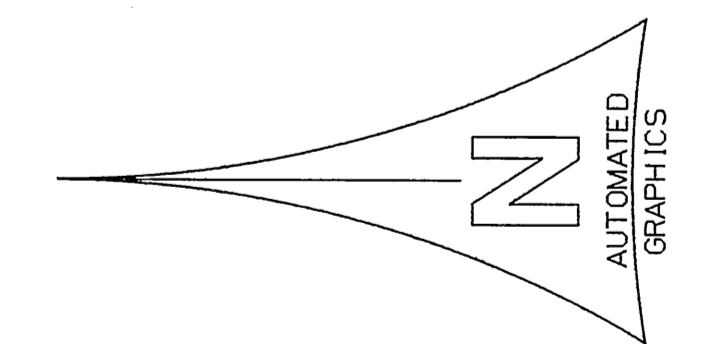
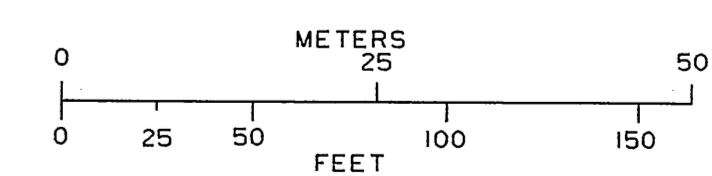
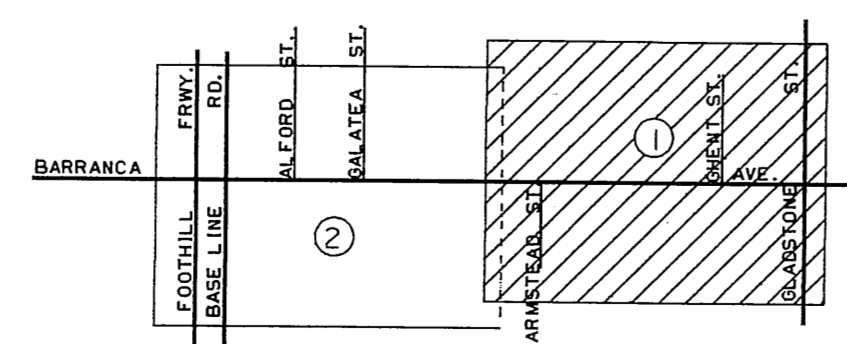
INDEX MAP  
NOT TO SCALE

NOTE :  
THIS MAP DELINEATES THE REVISED ALIGNMENT  
OF BARRANCA AVE. (FORMERLY BEN LOMOND AVE.)  
ADOPTED BY THE I.E.C. DATED APRIL 27, 1967 AND  
SUPERSEDES C.S.B-1646 & C.S.B-2933 WITHIN THE  
LIMITS HEREON.

COUNTY OF LOS ANGELES DEPARTMENT OF PUBLIC WORKS T. A. TIDEMANSON - COUNTY ENGINEER PREPARED BY MAPPING AND PROPERTY MANAGEMENT DIVISION SURVEYED BY J. H. BROWN CHECKED BY R. H. LARRO DRAWN BY G. MASUDA	MAP OF <b>BARRANCA AVE.</b> FROM <b>GLADSTONE AVE.</b> TO <b>BASE LINE ROAD</b> BASIS OF BEARINGS CALIFORNIA COORDINATE SYSTEM, ZONE 7	COUNTY SURVEYOR'S MAP NO <b>B-5470</b> SHEET 1 OF 2 SHEETS FILED: <i>2/27/68</i> COUNTY OF LOS ANGELES SURVEYED FEB. 1968 REFERENCE F.B. 3194
	JOB NUMBER 0208.11	INDEX MAP NO 144-317

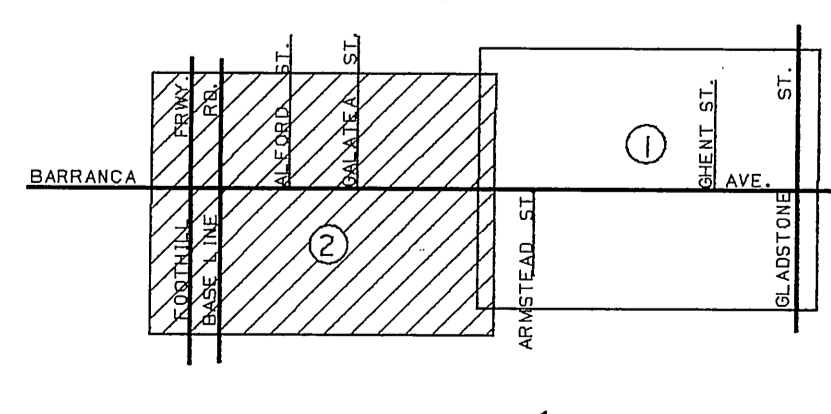
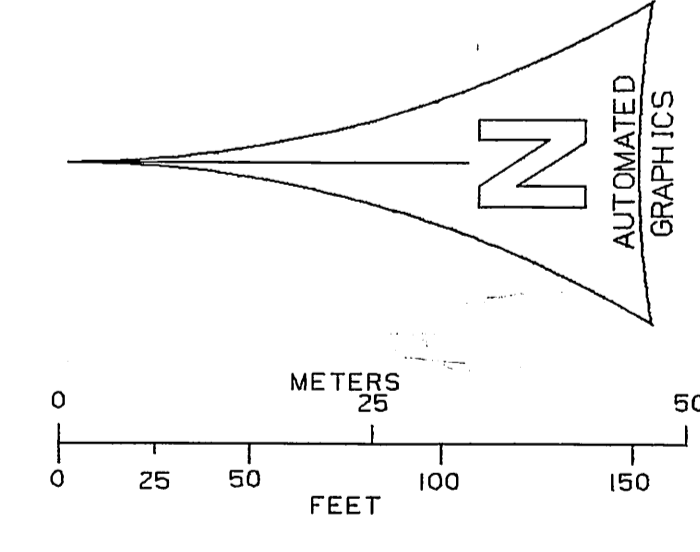
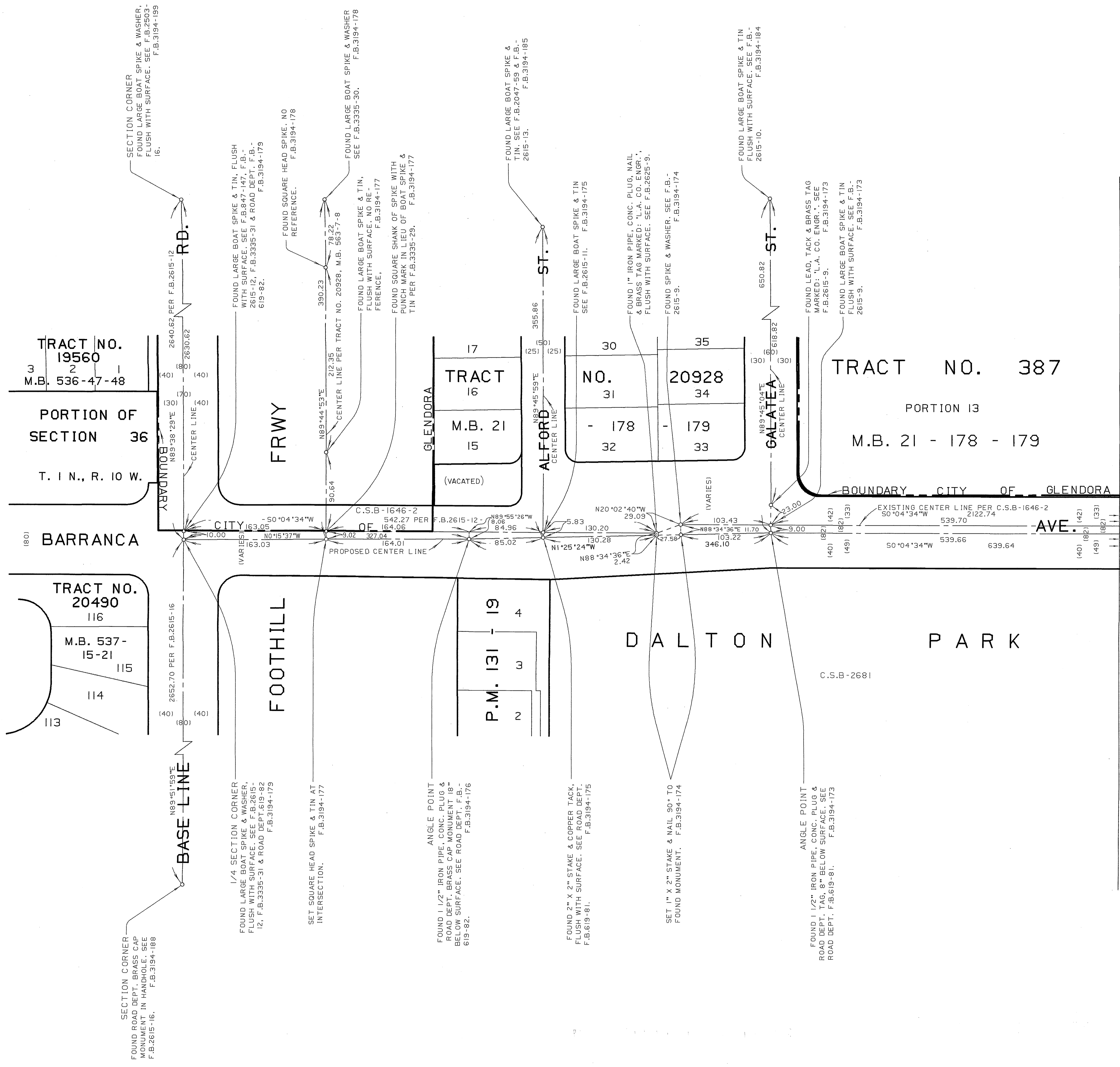


NOTE :  
 THIS MAP SUPERCEDES C.S.B-5470. THE FOLLOWING CHANGES HAVE BEEN MADE : THE REFERENCE FOR THE LARGE BOAT SPIKE IN THE INTERSECTION OF GLADSTONE AVE. AND BARRANCA AVE. HAS BEEN CORRECTED FROM F.B.3194-159,1160 TO F.B.3194-159,160. THE MAP BOOK NUMBER FOR TRACT NO. 20928 ON SHEET 2 HAS BEEN CORRECTED FROM M.B. 21 178 - 179 TO M.B. 599 30 - 31.



NOTE :  
 THIS MAP DELINEATES THE REVISED ALIGNMENT OF BARRANCA AVE. (FORMERLY BEN LOMOND AVE.) ADOPTED BY THE I.E.C. DATED APRIL 27, 1967 AND SUPERSEDES C.S.B-1646 & C.S.B-2933 WITHIN THE LIMITS HEREON.

COUNTY OF LOS ANGELES DEPARTMENT OF PUBLIC WORKS T. A. TIDEMANSON - COUNTY ENGINEER PREPARED BY MAPPING AND PROPERTY MANAGEMENT DIVISION AND SURVEY DIVISION SURVEYED BY J. H. BROWN CHECKED BY R. HILARIO DRAWN BY G. MASUDA	MAP OF <b>BARRANCA AVE.</b> FROM GLADSTONE AVE. TO BASE LINE ROAD		COUNTY SURVEYOR'S MAP NO <b>B-5470A</b> SHEET 1 OF 2 SHEETS FILED: OCT 25 1968 ASST. DEPUTY DIRECTOR	
	BASIS OF BEARINGS CALIFORNIA COORDINATE SYSTEM, ZONE 7		SURVEYED FEB. 1968 REFERENCE F.B. 3194	
			JOB NUMBER 0208.11	INDEX MAP NO 144-317
				1/4 SECTION CORNER FOUND COUNTY ENGINEER MONUMENT RE- MOVED BY SEWER CONSTRUCTION ON JAN. 12, 1968. SEE F.B.632-54. REPLACED SAME WITH MONUMENT MARKED: IN HANDHOLE. F.B.3194-117



**NOTE :**  
THIS MAP DELINEATES THE REVISED ALIGNMENT OF BARRANCA AVE. (FORMERLY BEN LOMOND AVE.) ADOPTED BY THE I.E.C. DATED APRIL 27, 1967 AND SUPERSEDES C.S.B-1646 & C.S.B-2933 WITHIN THE LIMITS HEREON.

COUNTY OF LOS ANGELES <b>DEPARTMENT OF PUBLIC WORKS</b> T. A. TIDEMANSON - COUNTY ENGINEER PREPARED BY MAPPING AND PROPERTY MANAGEMENT DIVISION SURVEYED BY J. H. BROWN CHECKED BY B. HILARIO DRAWN BY S. MASUDA	<b>MAP OF BARRANCA AVE.</b> FROM <b>GLADSTONE AVE.</b> TO <b>BASE LINE ROAD</b> BASIS OF BEARINGS CALIFORNIA COORDINATE SYSTEM, ZONE 7		COUNTY SURVEYOR'S MAP NO <b>B-5470</b> SHEET 2 OF 2 SHEETS FILED: 3/25 1968 SURVEYED FEB. 1968 REFERENCE F.B. 3194
	JOB NUMBER 0208.11 INDEX MAP NO 144-317		

