

FD L.A. CITY MONUMENT IN HANDHOLE
SEE L.A. CITY ENGR FB 18803-41
FB 4477-98

BL

VAN NUYS

FD NOTHING
ESTAB AT REC DIST 156.62 FROM WEST
PER L.A. CITY ENGR FB 18803-41
FB 4477-95

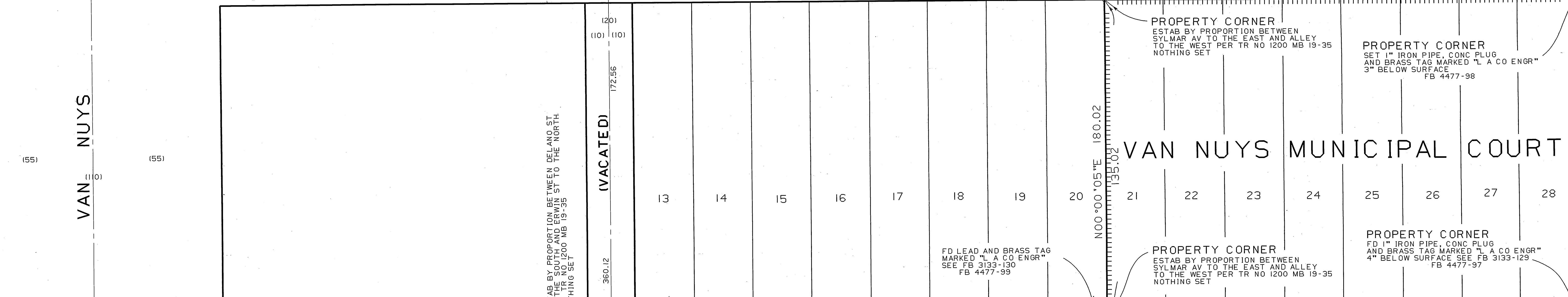
FD NOTHING
ESTAB BY PROPORTION BETWEEN SYLMAR AV
TO THE EAST AND VAN NUYS BL
TO THE WEST PER TR NO 1200 MB 19-35
NOTHING SET
FB 4477-96

SET LEAD AND BRASS TAG
MARKED "L.A. CO ENGR"
FB 4477-98

FD 4 PM ON MANHOLE RIM
SEE FB 3133-131
FB 4477-98

FD CONC NAIL
SEE FB 3133-131
FB 4477-98

ERWIN STREET MALL



ESTAB BY PROPORTION BETWEEN DELANO ST
TO THE SOUTH AND ERWIN ST TO THE NORTH
PER TR NO 1200 MB 19-35
NOTHING SET

ESTAB BY INT
SET PM ON CONC PLATFOM
FB 4477-98

FD BRASS TAG AND NAIL MARKED
"L.A. CO ENGR" IN CONC IN LIEU
OF COUNTY SURVEYOR MONUMENT
SEE FB 1023-10
FB 4477-99

PROPERTY CORNER
ESTAB BY PROPORTION BETWEEN
SYLMAR AV TO THE EAST AND ALLEY
TO THE WEST PER TR NO 1200 MB 19-35
NOTHING SET

PROPERTY CORNER
SET 1" IRON PIPE, CONC PLUG
AND BRASS TAG MARKED "L.A. CO ENGR"
3" BELOW SURFACE
FB 4477-98

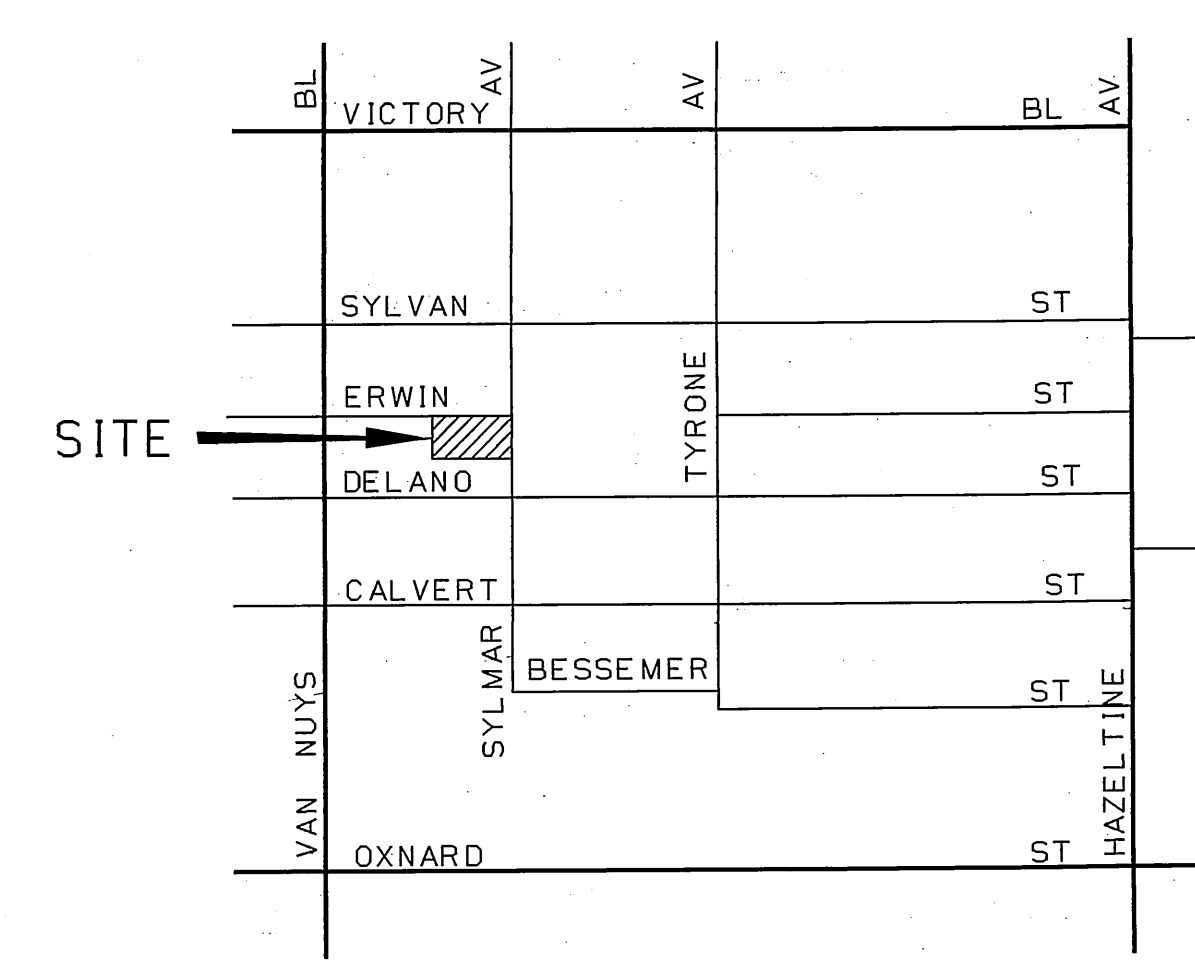
PROPERTY CORNER
FD 1" IRON PIPE, CONC PLUG
AND BRASS TAG MARKED "L.A. CO ENGR"
4" BELOW SURFACE SEE FB 3133-129
FB 4477-97

ESTAB BY INT
NOTHING SET

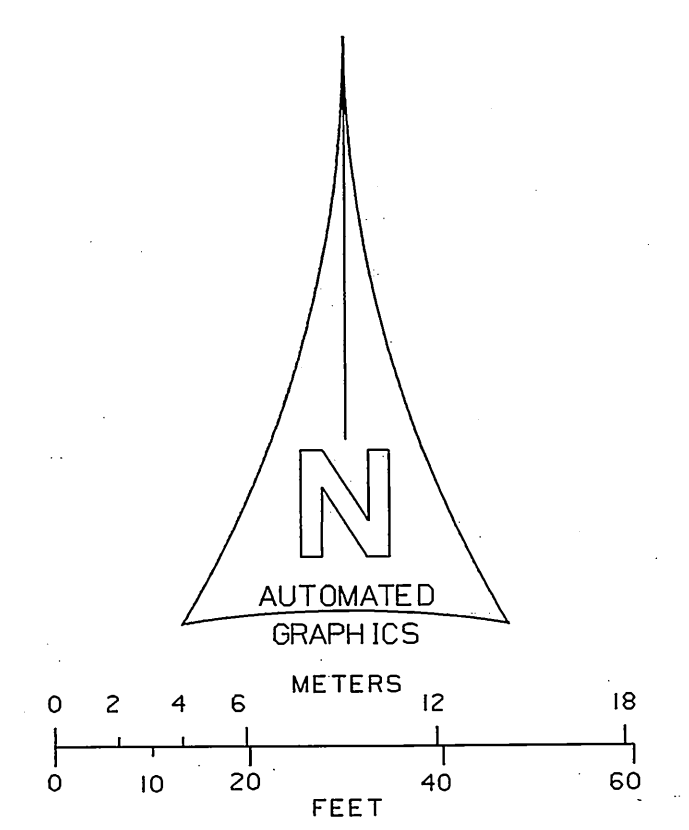
FD SPK AND TIN
FLUSH WITH SURFACE
SEE FB 1823-34
FB 4477-97

FD LARGE BT SPK WASHER AND TIN
MARKED "L.A. CO ENGR"
SEE FB 1823-3
FB 4477-97

FD 4 PM ON MANHOLE RIM
SEE FB 1823-7
FB 4477-97



INDEX MAP
NOT TO SCALE



COUNTY OF LOS ANGELES DEPARTMENT OF PUBLIC WORKS T. A. TIDEMANSON - COUNTY ENGINEER PREPARED BY MAPPING AND PROPERTY MANAGEMENT DIVISION AND SURVEY DIVISION SURVEYED BY <u>E. LANDA</u> CHECKED BY <u>S. BARLAND & IQY</u> DRAWN BY <u>S. IQY</u>	MAP OF VAN NUYS MUNICIPAL COURT (VAN NUYS)		COUNTY SURVEYOR'S MAP NO B-5478 SHEET 1 OF 1 SHEETS FILED: <u>Nov. 10</u> 1992 <u>Brian Scudder</u> ASST. CHIEF MEAS. & PROP. MGT.
	BASIS OF BEARINGS THE CENTERLINE OF ERWIN ST (DUE EAST) AS SHOWN ON CSB-2378		REFERENCE TR NO 1200 SURVEYED JUNE 1984 INDEX MAP NO 174-137