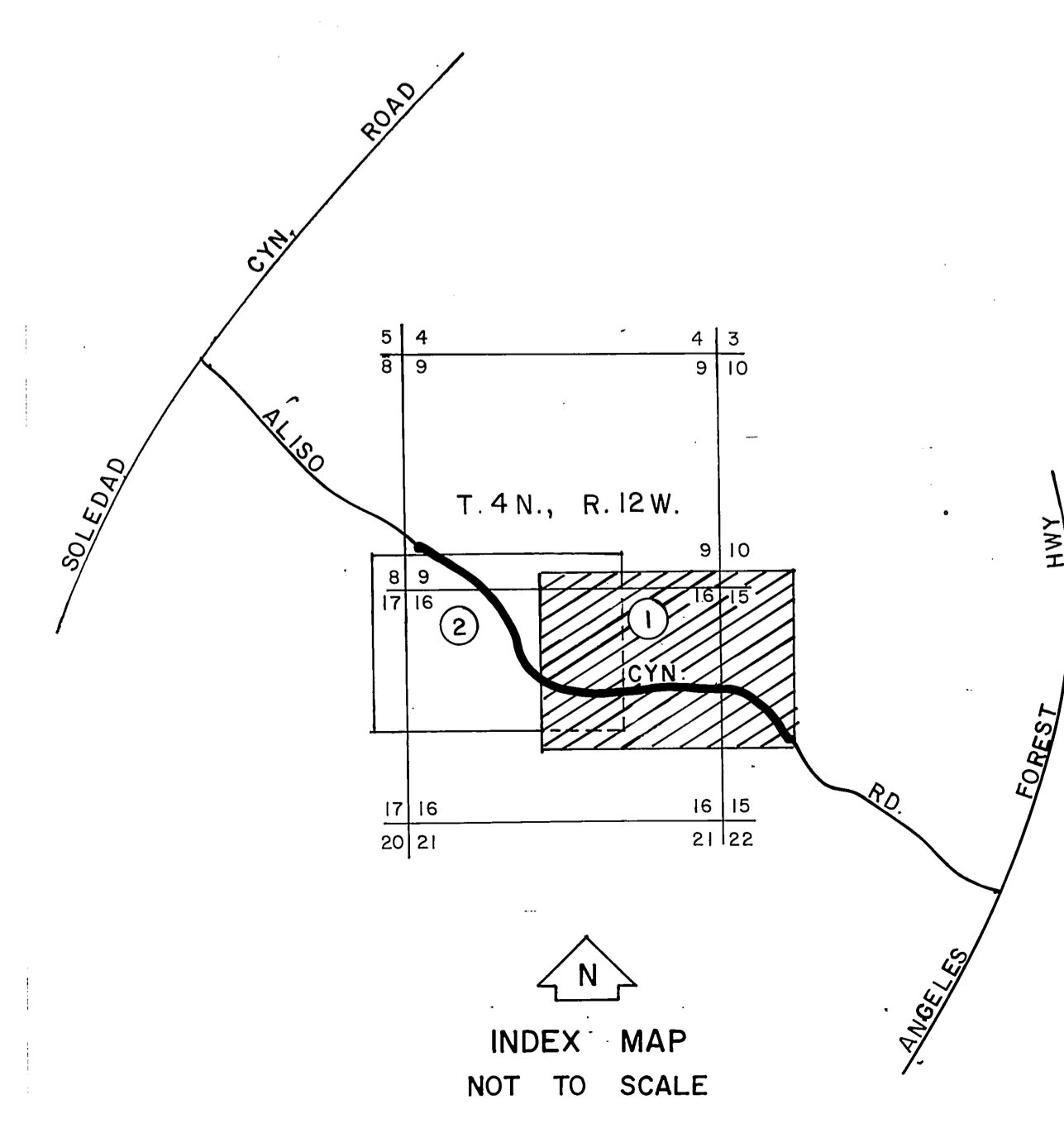
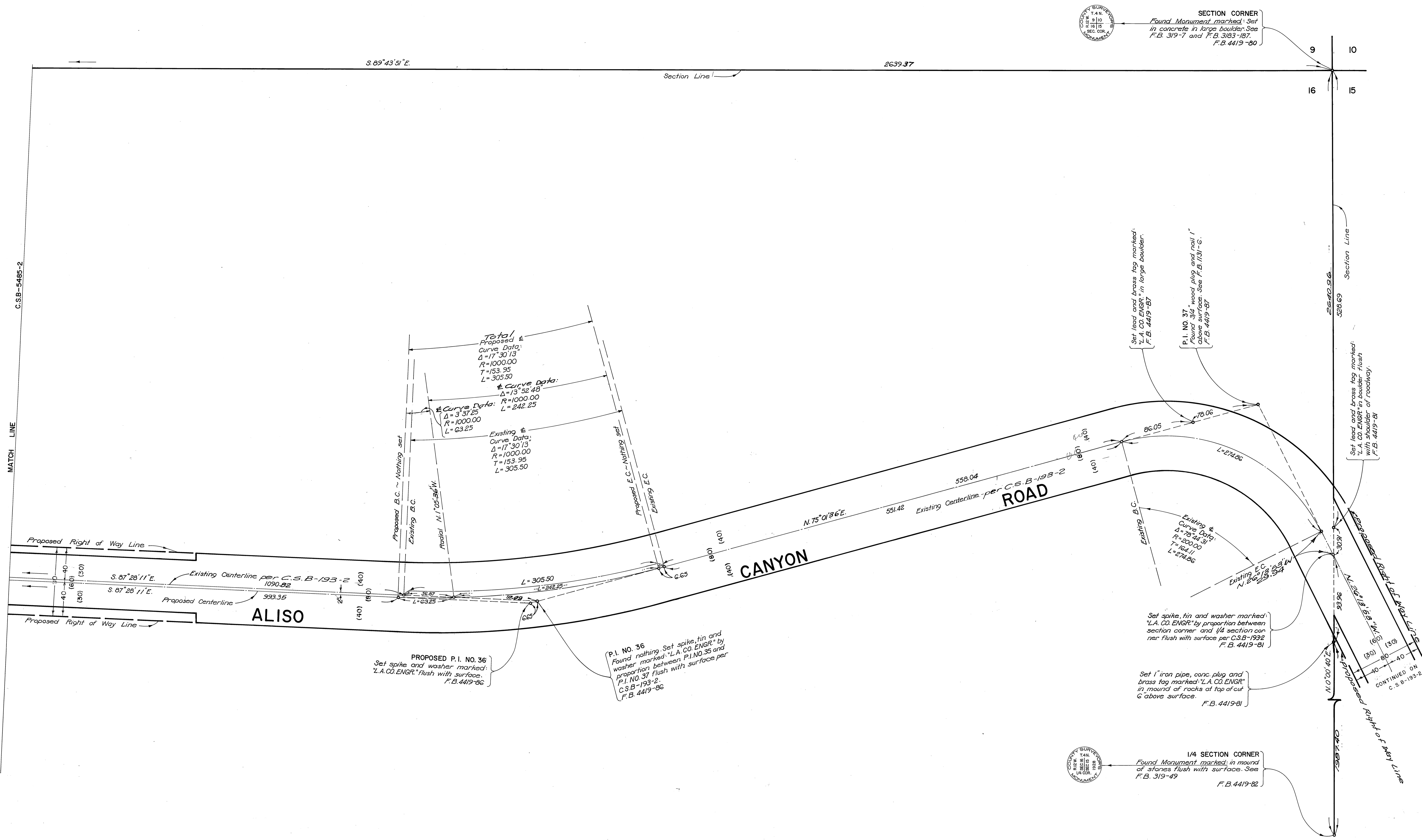


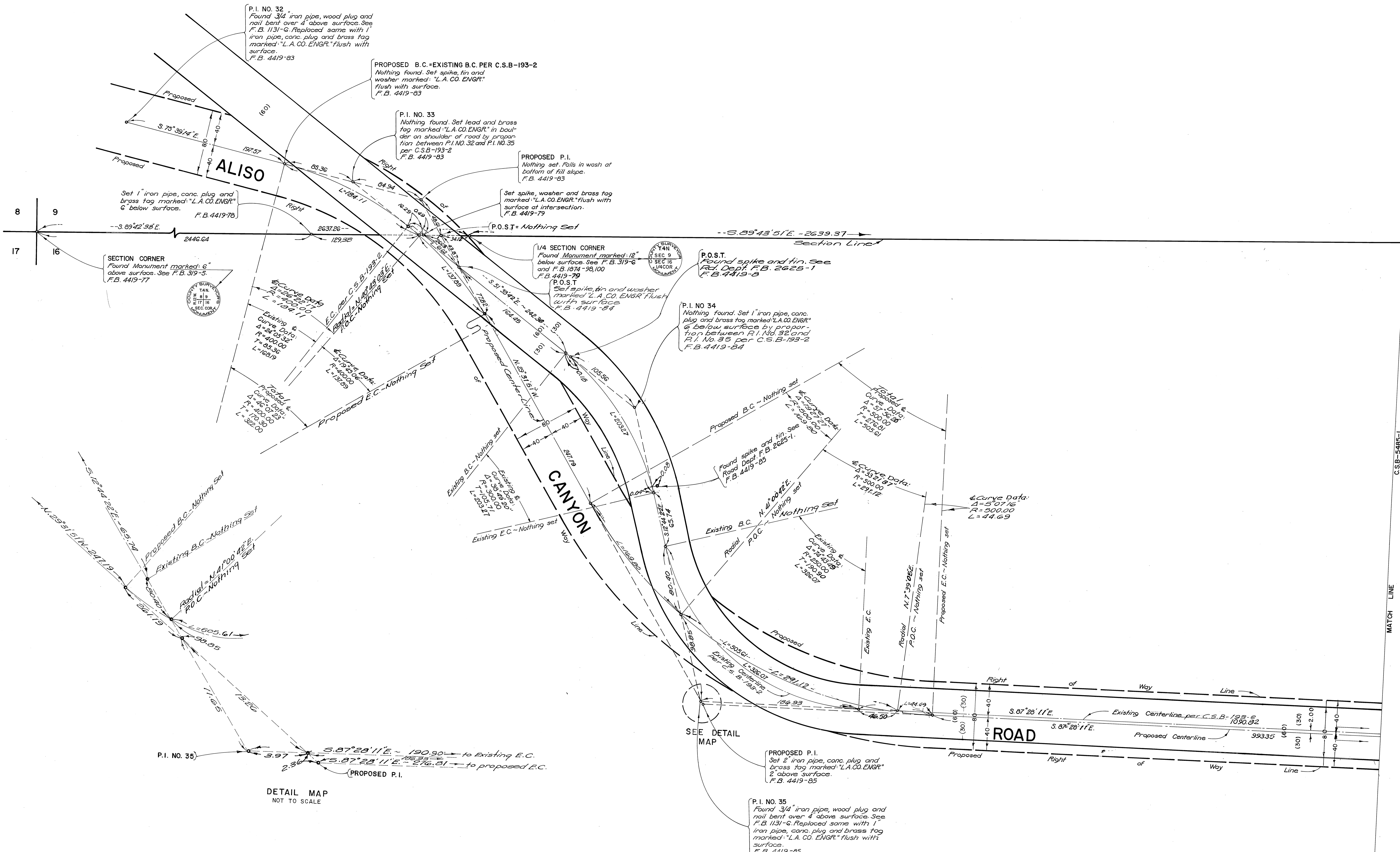
C2B-2482-1



NOTE:
 THIS MAP SUPERSEDES THE PROPOSED ALIGNMENT OF ALISO CANYON ROAD AS SHOWN ON C.S.B.-193-2 WITHIN THE LIMITS SHOWN HEREIN. SEE I.E.C. MINUTES DATED MARCH 7, 1984.
 ALSO SHOWN IS THE RECLASSIFICATION FROM A MAJOR HIGHWAY TO A SECONDARY HIGHWAY AS SHOWN ON THE LOS ANGELES COUNTY GENERAL PLAN NOVEMBER 1980.

COUNTY OF LOS ANGELES DEPARTMENT OF PUBLIC WORKS T. A. TIDEMANSON - DIRECTOR PREPARED BY SURVEY AND MAPPING DIVISION GIBSON PHELPS JR. DIVISION CHIEF SURVEYED BY J. R. COVEY CHECKED BY R. G. HILARIO B. GOINS DRAWN BY R. N. TELEBRICO	ALIGNMENT MAP OF ALISO CANYON ROAD FROM P.I. NO. 37 IN N.E. 1/4 SEC. 16, T.4N., R.12W. TO P.I. NO. 33 IN S.W. 1/4 SEC. 9, T.4N., R.12W.		COUNTY SURVEYOR'S MAP NO. B-5485 SHEET 11 OF 2 SHEETS FILED <i>Feb 21 1984</i> SURVEYED <i>Robert P. ...</i> DEPUTY AUGUST 1984 REFERENCE F.B. 4419
	BASIS OF BEARINGS THE EAST LINE OF SECTION 16, T.4N., R.12W. (N.0°00'40"E.) AS SHOWN ON C.S.B.-193-2		JOB NUMBER 1529.38 INDEX MAP NO. 264-237

C2B-2482-1



SECTION CORNER
Found Monument marked "6"
above surface. See F.B. 319-5.
F.B. 4419-77

Set 1" iron pipe, conc. plug and
brass tag marked "L.A. CO. ENGR"
6" below surface.
F.B. 4419-78

P.I. NO. 32
Found 3/4" iron pipe, wood plug and
nail bent over 4" above surface. See
F.B. 1131-G. Replaced same with 1"
iron pipe, conc. plug and brass tag
marked "L.A. CO. ENGR." flush with
surface.
F.B. 4419-83

PROPOSED B.C. = EXISTING B.C. PER C.S.B-193-2
Nothing found. Set spike, tin and
washer marked "L.A. CO. ENGR."
flush with surface.
F.B. 4419-83

P.I. NO. 33
Nothing found. Set lead and brass
tag marked "L.A. CO. ENGR." in boul-
der on shoulder of road by propor-
tion between P.I. NO. 32 and P.I. NO. 35
per C.S.B-193-2
F.B. 4419-83

PROPOSED P.I.
Nothing set. Falls in wash at
bottom of fill slope.
F.B. 4419-83

Set spike, washer and brass tag
marked "L.A. CO. ENGR." flush with
surface at intersection.
F.B. 4419-79

P.O.S.T. = Nothing Set

1/4 SECTION CORNER
Found Monument marked "12"
below surface. See F.B. 319-6
and F.B. 1874-98, 100
F.B. 4419-79

P.O.S.T.
Set spike, tin and washer
marked "L.A. CO. ENGR." flush
with surface
F.B. 4419-84

P.I. NO. 34
Nothing found. Set 1" iron pipe, conc.
plug and brass tag marked "L.A. CO. ENGR"
6" below surface by propor-
tion between P.I. No. 32 and
P.I. No. 35 per C.S.B-193-2
F.B. 4419-84

P.O.S.T.
Found spike and tin. See
Ref. Dept. F.B. 2625-1
F.B. 4419-8

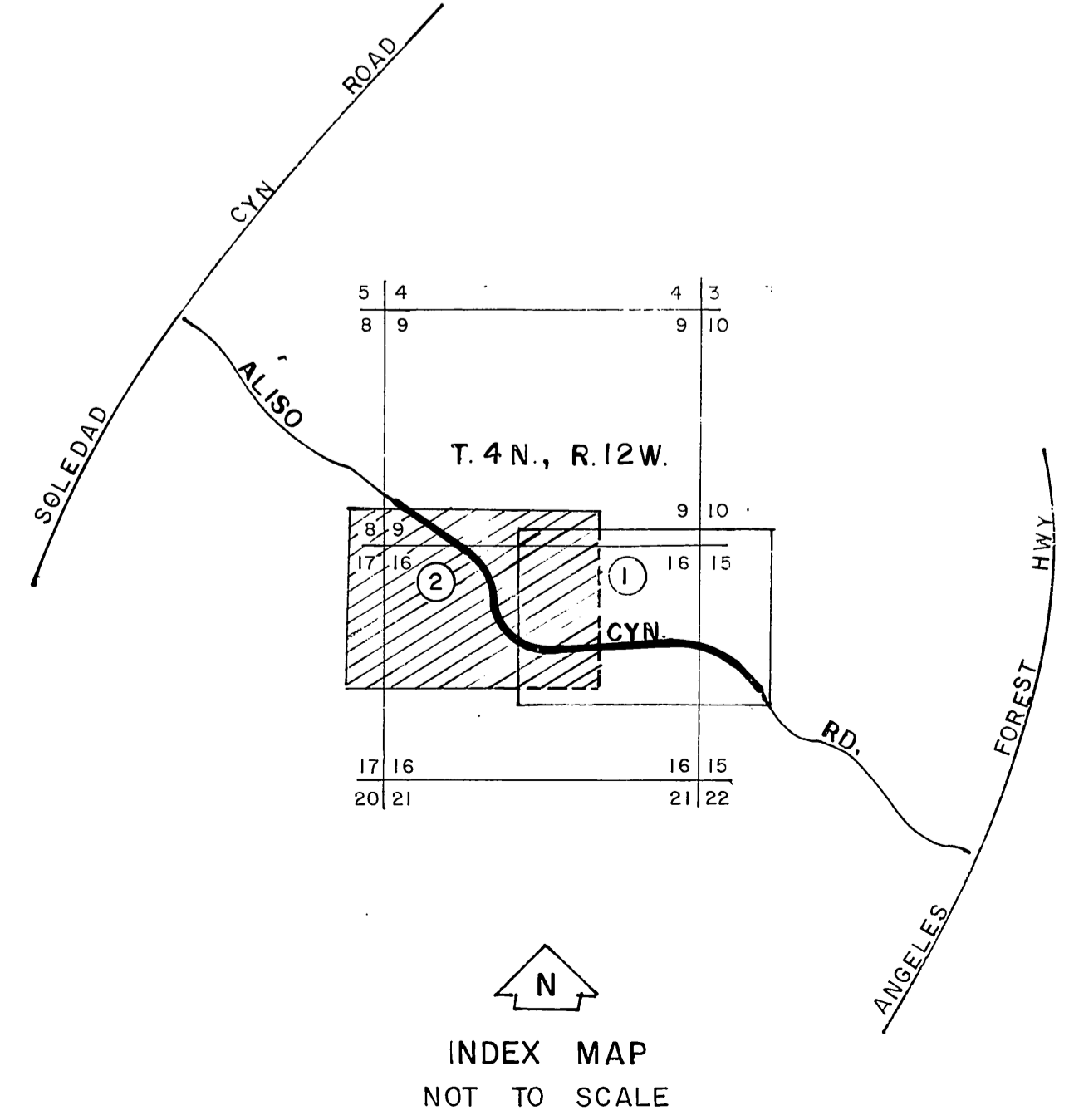
Found spike and tin. See
Road Dept. F.B. 2625-1.
F.B. 4419-85

PROPOSED P.I.
Set 2" iron pipe, conc. plug and
brass tag marked "L.A. CO. ENGR"
2" above surface.
F.B. 4419-85

P.I. NO. 35
Found 3/4" iron pipe, wood plug and
nail bent over 4" above surface. See
F.B. 1131-G. Replaced same with 1"
iron pipe, conc. plug and brass tag
marked "L.A. CO. ENGR." flush with
surface.
F.B. 4419-85

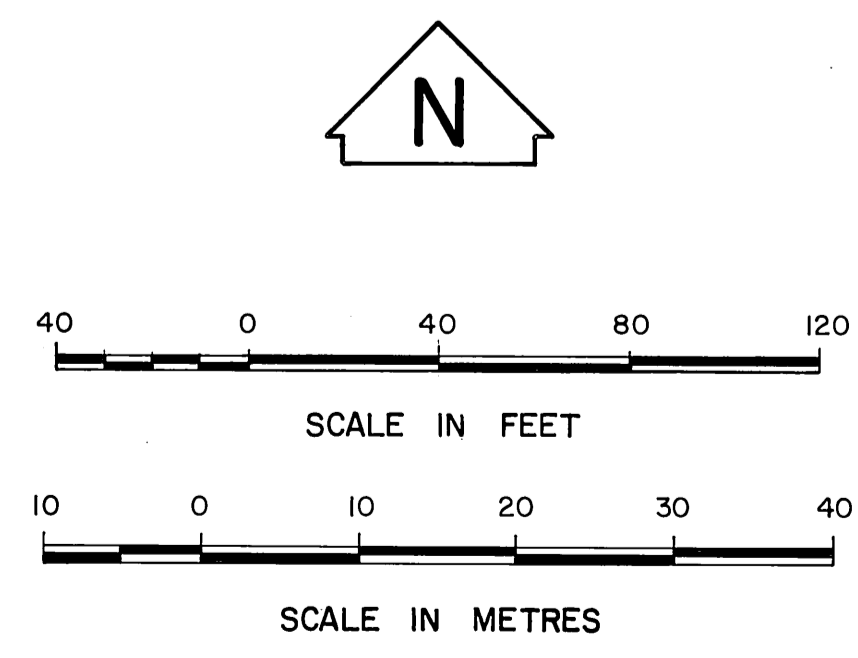
P.I. NO. 35
3.97
2.36
S. 87° 28' 11" E. - 190.90 - to Existing E.C.
S. 87° 28' 11" E. - 276.81 - to proposed E.C.
PROPOSED P.I.

DETAIL MAP
NOT TO SCALE



NOTE:
THIS MAP SUPERSEDES THE PROPOSED
ALIGNMENT OF ALISO CANYON ROAD AS
SHOWN ON C.S.B-193-2 WITHIN THE LIMITS
SHOWN HEREIN. SEE I.E.C. MINUTES DATED
MARCH 7, 1984.

ALSO SHOWN IS THE RECLASSIFICATION
FROM A MAJOR HIGHWAY TO A SECOND-
ARY HIGHWAY AS SHOWN ON THE LOS
ANGELES COUNTY GENERAL PLAN
NOVEMBER 1980.



COUNTY OF LOS ANGELES DEPARTMENT OF PUBLIC WORKS T. A. TIDE MANSON - DIRECTOR PREPARED BY SURVEY AND MAPPING DIVISION GIBSON PHELPS JR. DIVISION CHIEF SURVEYED BY J. R. COVEY B. GOINS CHECKED BY R. S. HILARIO DRAWN BY R. N. TELEBRICO	ALIGNMENT MAP OF ALISO CANYON ROAD FROM P.I. NO. 37 IN N.E. 1/4 SEC. 16, T.4N., R.12W TO P.I. NO. 33 IN S.W. 1/4 SEC. 9, T.4N., R.12W		COUNTY SURVEYOR'S MAP NO. B-5485 SHEET 2 OF 2 SHEETS FILED: <i>[Signature]</i> , 1984 DEPT. SURVEYED AUGUST 1984 REFERENCE F.B. 4419
	BASIS OF BEARINGS THE EAST LINE OF SECTION 16, T.4N., R.12W. (N. 0° 00' 40" E.) AS SHOWN ON C.S.B-193-2		
	JOB NUMBER 1529-38	INDEX MAP NO. 264-237	

MATCH LINE