

RANCHO TEMASCAL

STATION NO. 2
RANCHO TEMASCAL PAT 9-28
 Found Monument marked on top of high ridge & above surface. See C.S.B-1226. F.B. 4214-12

SECTION 15

1/4 SECTION CORNER
 Made diligent search for 4" diameter post per C.S. 9028-7. Found nothing. Topographical calls per government notes C.S. 9028-7 fit the general area. Set Monument marked on west side of Golden State Freeway by proportion between adjacent section corners per township plat T.5N., R.17W. F.B. 4214-40

1/4 SECTION CORNER
 Made diligent search for 4" diameter post per C.S. 9028-10. Found nothing. Set Monument marked on side hill by proportion between adjacent section corners per township plat T.5N., R.17W. and C.S. 9028-10. F.B. 4214-34

1/4 SECTION CORNER
 Made diligent search for 4" diameter post and stone mound per C.S. 9028-9. Nothing found. Topographical calls per C.S. 9028-9 fit the general area. Set Monument marked on top of spur of dirt road by proportion between section corners per township plat T.5N., R.17W. F.B. 4214-32

SECTION CORNER
 Made diligent search for 4" square post and pits per C.S. 9028-9. Nothing found. Topographical calls per C.S. 9028-9 fit the general area. Set Monument marked on west edge of spur by single proportion, 2 miles north, 1 mile south and record distance (3284.62) from the east per C.S. 9028-9 and township plat T.5N., R.17W. F.B. 4214-33

1/4 SECTION CORNER
 Made diligent search for 4" diameter post per C.S. 9028-9. Nothing found. Set Monument marked on top of sharp spur in rock mound by proportion between adjacent section corners per township plat T.5N., R.17W. and C.S. 9028-9. F.B. 4214-36

1/4 SECTION CORNER
 Made diligent search for 4" diameter post and stone mound per C.S. 9028-9. Nothing found. Topographical calls per C.S. 9028-9 fit the general area. Set Monument marked in a benched area 20' east of sharp spur. See C.S.B-1226. F.B. 4214-6

SURVEY CONTROL STATION WHITAKER PEAK N-15
 Found U.S. Coast and Geodetic Survey Monument flush with surface. See Quad 341184-1074. F.B. 4214-9
 N. 4,295,177.83
 E. 4,095,671.42 (1973 adjustment)

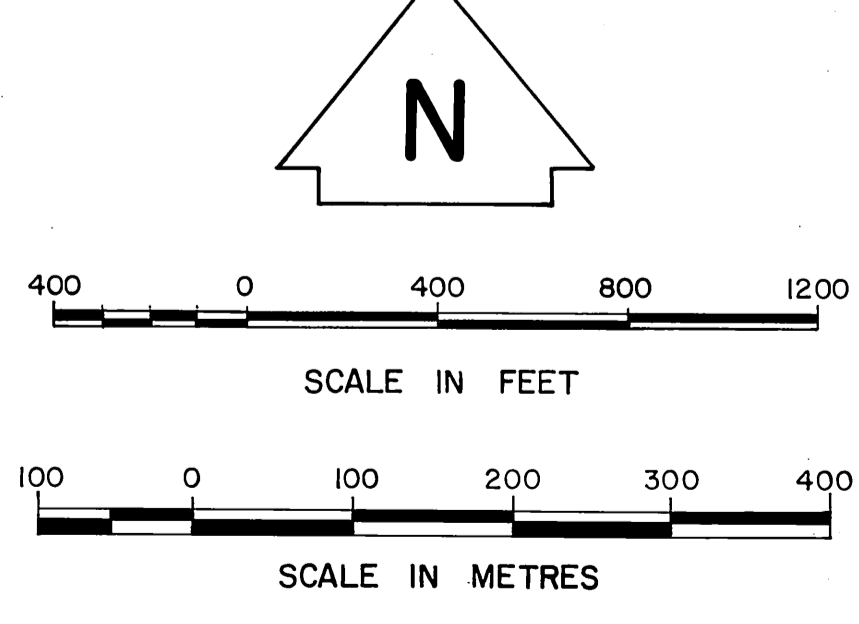
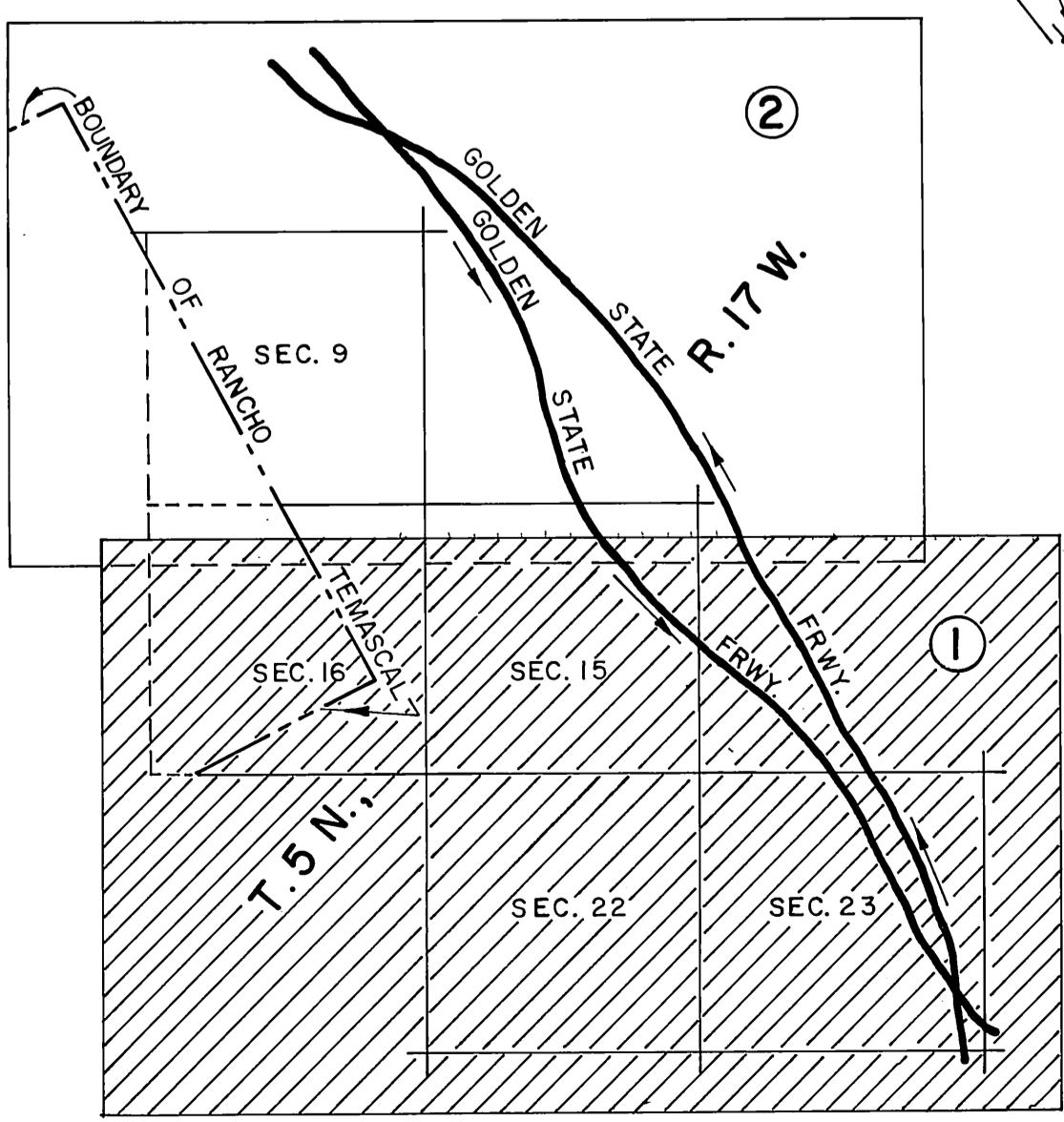
WITNESS CORNER
 Found Monument marked in a benched area S' north of sharp spur. See C.S.B-1226. F.B. 4214-8

1/4 SECTION CORNER
 Found Monument marked flush with surface. See C.S.B-1226. F.B. 4214-19

1/4 SECTION CORNER
 Established by proportion between adjacent section corners per township plat T.5N., R.17W. Nothing set.

SURVEY CONTROL STATION CASTAIC D-1
 Found "L.A. CO. SURVEY CONTROL TRAVERSE STATION" See F.B. 943-77 and F.B. 2459-93. F.B. 4214-12
 N. 4,293,191.50
 E. 4,085,929.87 (1976 adjustment)

SECTION CORNER
 Found Monument marked flush with surface. See C.S.B-1226. F.B. 4214-12, 19



NOTE:
 THIS MAP WAS FILED FOR THE PURPOSE OF ESTABLISHING SECTION LINES. ALL OTHER CADASTRAL DATA HAS BEEN OMITTED.

COUNTY OF LOS ANGELES
DEPARTMENT OF COUNTY ENGINEER-FACILITIES
 STEPHEN J. KOONCE-COUNTY ENGINEER
 PREPARED BY SURVEY-LAND DEVELOPMENT DIVISION
 GIBSON PHELPS JR. ASSISTANT DEPUTY COUNTY ENGINEER
 SURVEYED BY M.E. WACKER
 CHECKED BY R.G. HILARIO
 DRAWN BY B. GOINS-R. TELEBRICO

MAP OF
SECTIONS 9, 15, 16, 22 & 23
T.5N., R.17W.
 BASIS OF BEARINGS
 CALIFORNIA COORDINATE SYSTEM, ZONE 7

COUNTY SURVEYOR'S MAP NO.
B-5486
 SHEET 1 OF 2 SHEETS
 FILED: NOV. 12, 1984
 DEPUTY SURVEYOR
 APRIL 19 84
 REFERENCE
 F.B. 4214
 JOB NUMBER 0208.11 INDEX MAP NO. 17

