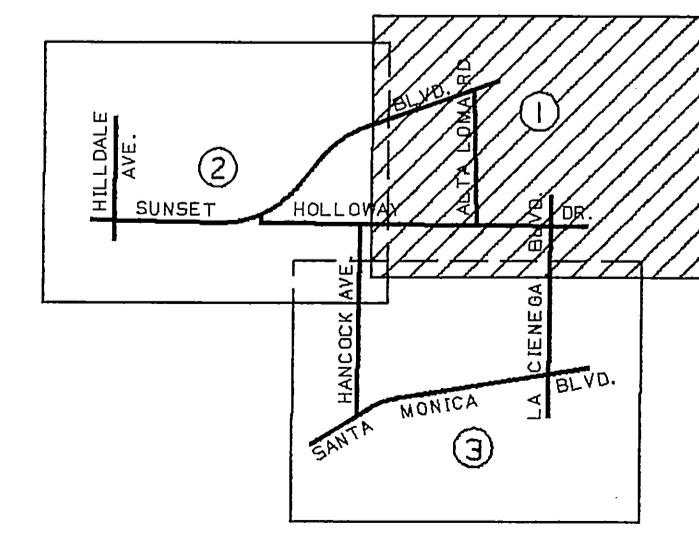
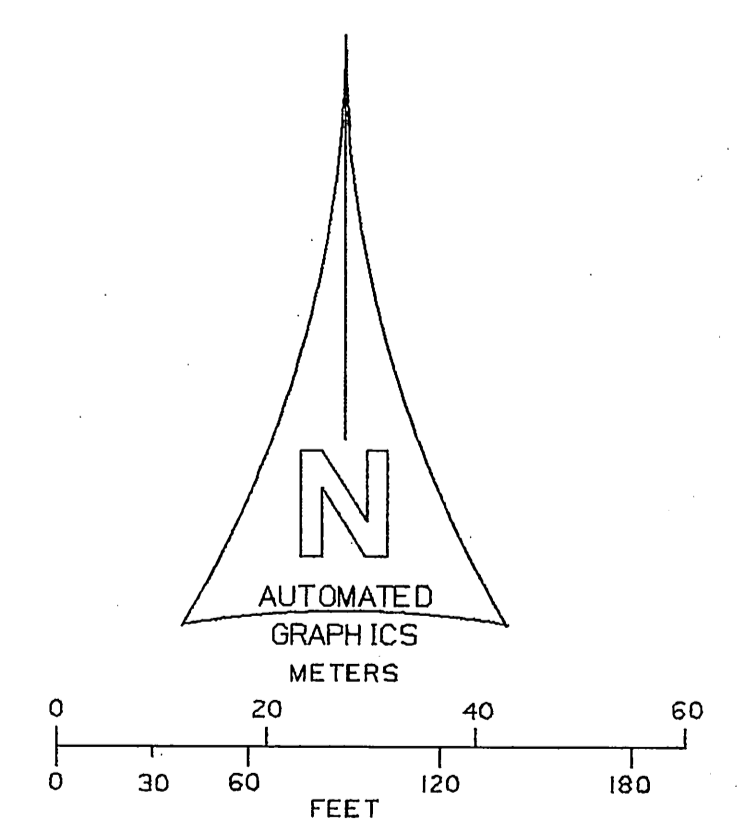
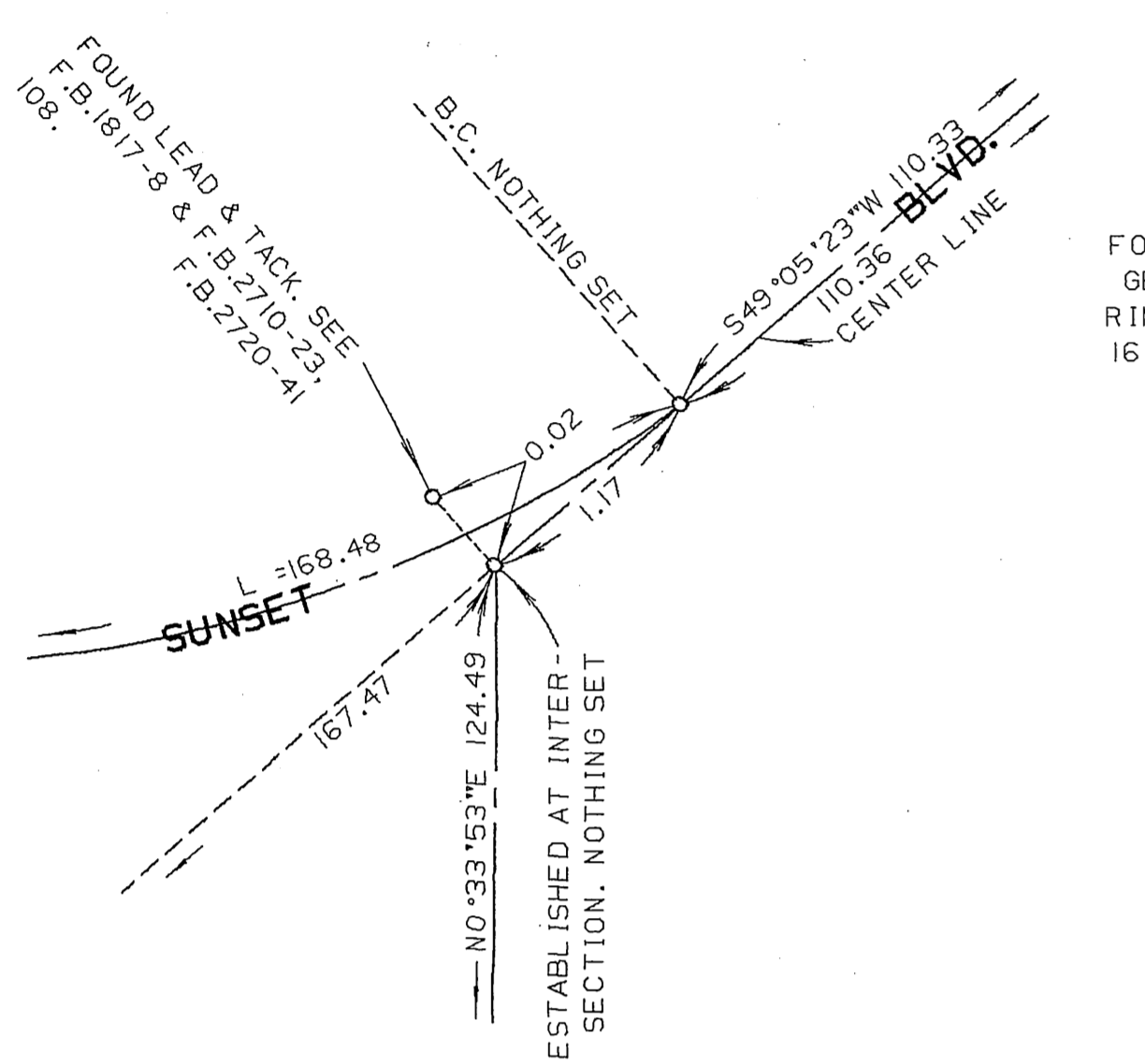
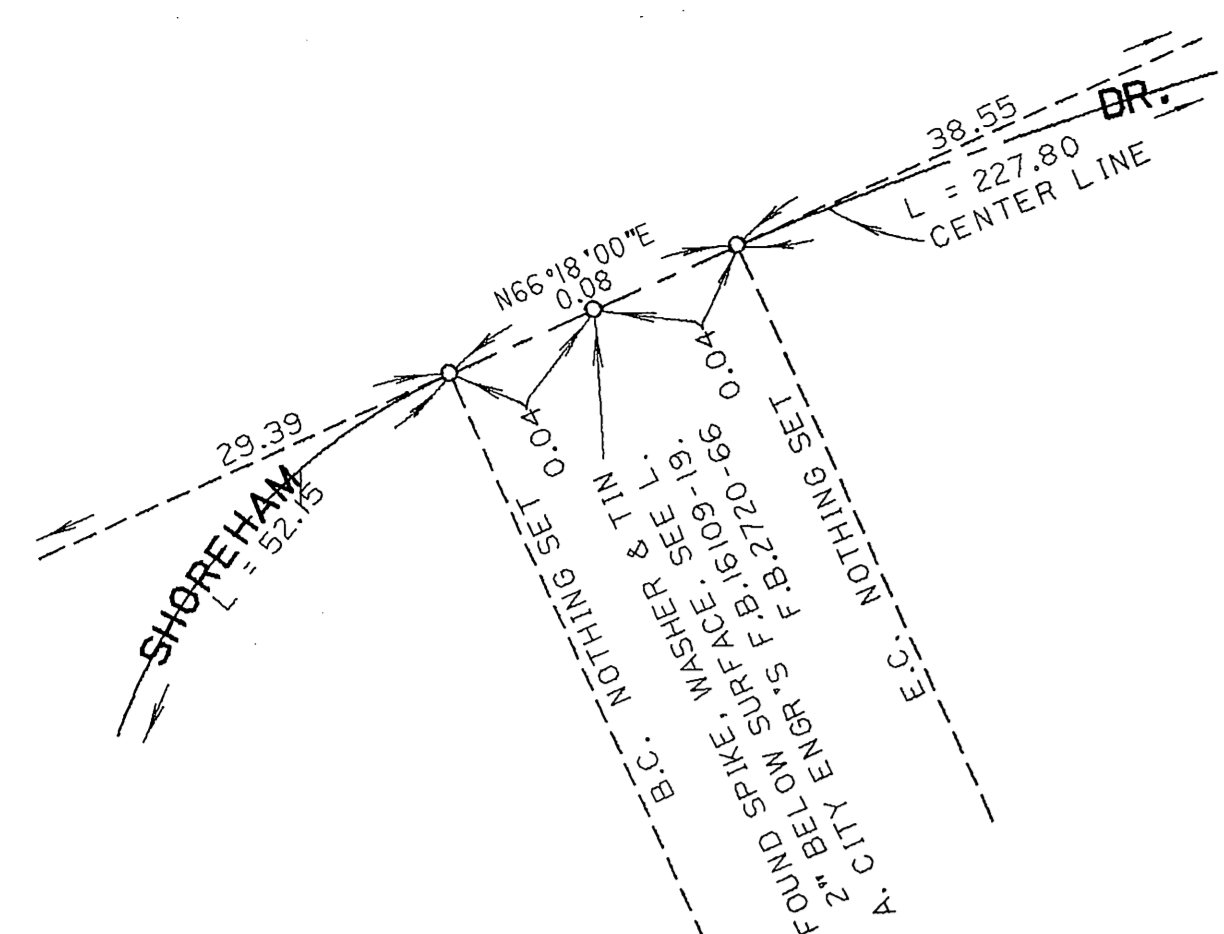


DETAIL 'A'
NOT TO SCALE

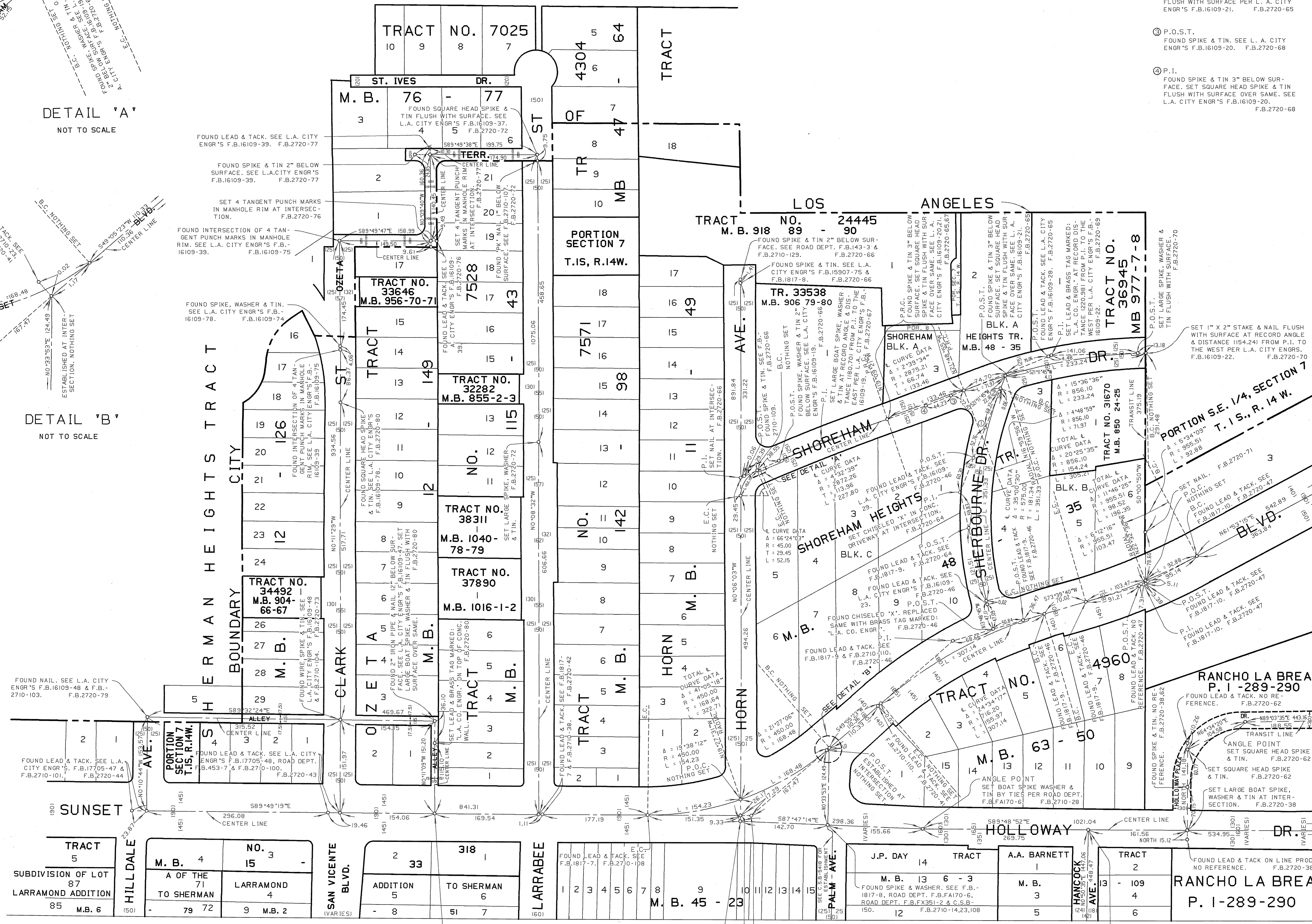


COUNTY OF LOS ANGELES DEPARTMENT OF PUBLIC WORKS T.A. IDEMANSON - COUNTY ENGINEER PREPARED BY MAPPING AND PROPERTY MANAGEMENT DIVISION	MAP OF STREETS IN A PORTION OF WEST HOLLYWOOD & SHERMAN SEWER MAINTENANCE DISTRICT	COUNTY SURVEYOR'S MAP NO B-5490 SHEET 1 OF 3 SHEETS
		FILED: <i>3/14/62</i> 1962 MARCH 1961 - JUNE 1962 SURVEYED F.B.3218 F.B.2710 JOB NUMBER 0208.11 INDEX MAP NO 129-157,144-157
SURVEYED BY <u>D. L. BURKHOLDER</u> CHECKED BY <u>B. G. HILARIO</u> DRAWN BY <u>D. MASUDA</u>	BASIS OF BEARINGS CALIFORNIA COORDINATE SYSTEM, ZONE 7 AS SHOWN ON C.S.B-5418	

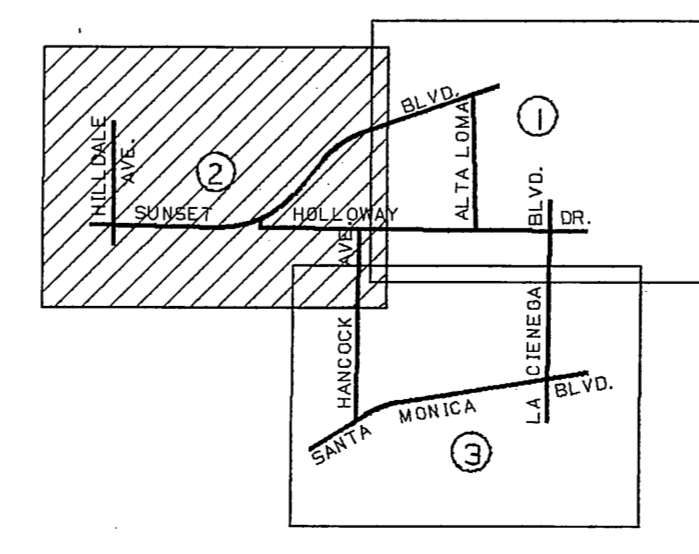
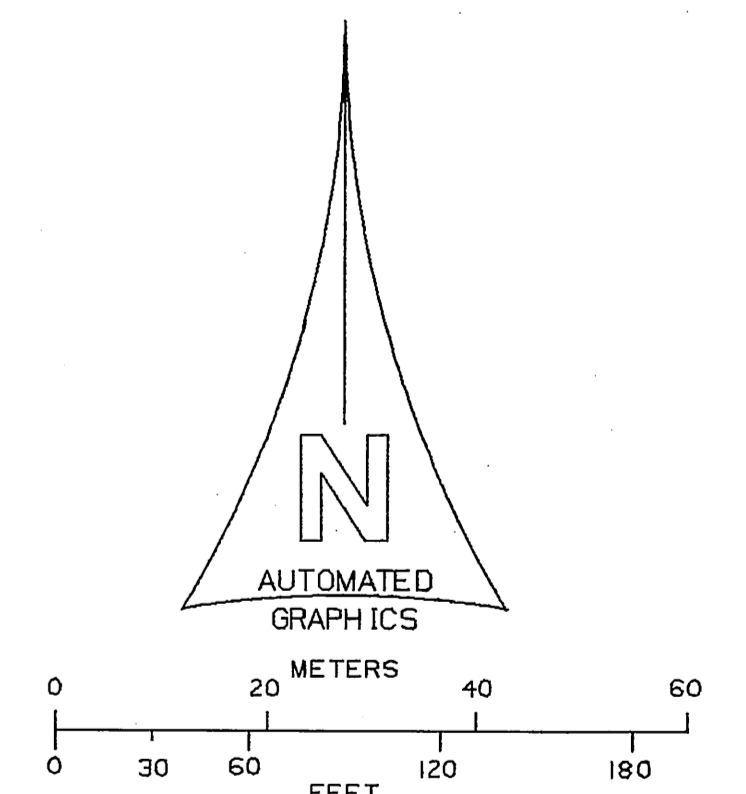


DETAIL 'A' NOT TO SCALE

DETAIL 'B' NOT TO SCALE



- ① P.O.S.T. FOUND SPIKE & TIN 1" BELOW SURFACE. SEE L.A. CITY ENGR'S F.B.16109-23 & 29. F.B.2720-64
- ② P.O.S.T. FOUND DISTURBED SPIKE & TIN. SET SQUARE HEAD SPIKE & TIN AT RECORD DISTANCE (26.35) FROM THE NORTH FLUSH WITH SURFACE PER L.A. CITY ENGR'S F.B.16109-21. F.B.2720-65
- ③ P.O.S.T. FOUND SPIKE & TIN. SEE L.A. CITY ENGR'S F.B.16109-20. F.B.2720-68
- ④ P.I. FOUND SPIKE & TIN 3" BELOW SURFACE. SET SQUARE HEAD SPIKE & TIN FLUSH WITH SURFACE OVER SAME. SEE L.A. CITY ENGR'S F.B.16109-20. F.B.2720-68



INDEX MAP NOT TO SCALE

COUNTY OF LOS ANGELES DEPARTMENT OF PUBLIC WORKS T.A. TIMEANSON - COUNTY ENGINEER PREPARED BY MAPPING AND PROPERTY MANAGEMENT DIVISION	MAP OF STREETS IN A PORTION OF WEST HOLLYWOOD & SHERMAN SEWER MAINTENANCE DISTRICT	COUNTY SURVEYOR'S MAP NO B-5490 SHEET 2 OF 3 SHEETS FILED: <i>[Signature]</i> 1984 DEPUTY SURVEYED MARCH 1961 - JUNE 1962 F.B.3218 F.B.2710 JOB NUMBER 0208.11 INDEX MAP NO 129-157,144-157
SURVEYED BY <u>D.L. BURKHOLDER</u> CHECKED BY <u>B.G. HILARIO</u> DRAWN BY <u>S. MASUDA</u>	BASIS OF BEARINGS CALIFORNIA COORDINATE SYSTEM, ZONE 7 AS SHOWN ON C.S.B-5418	

