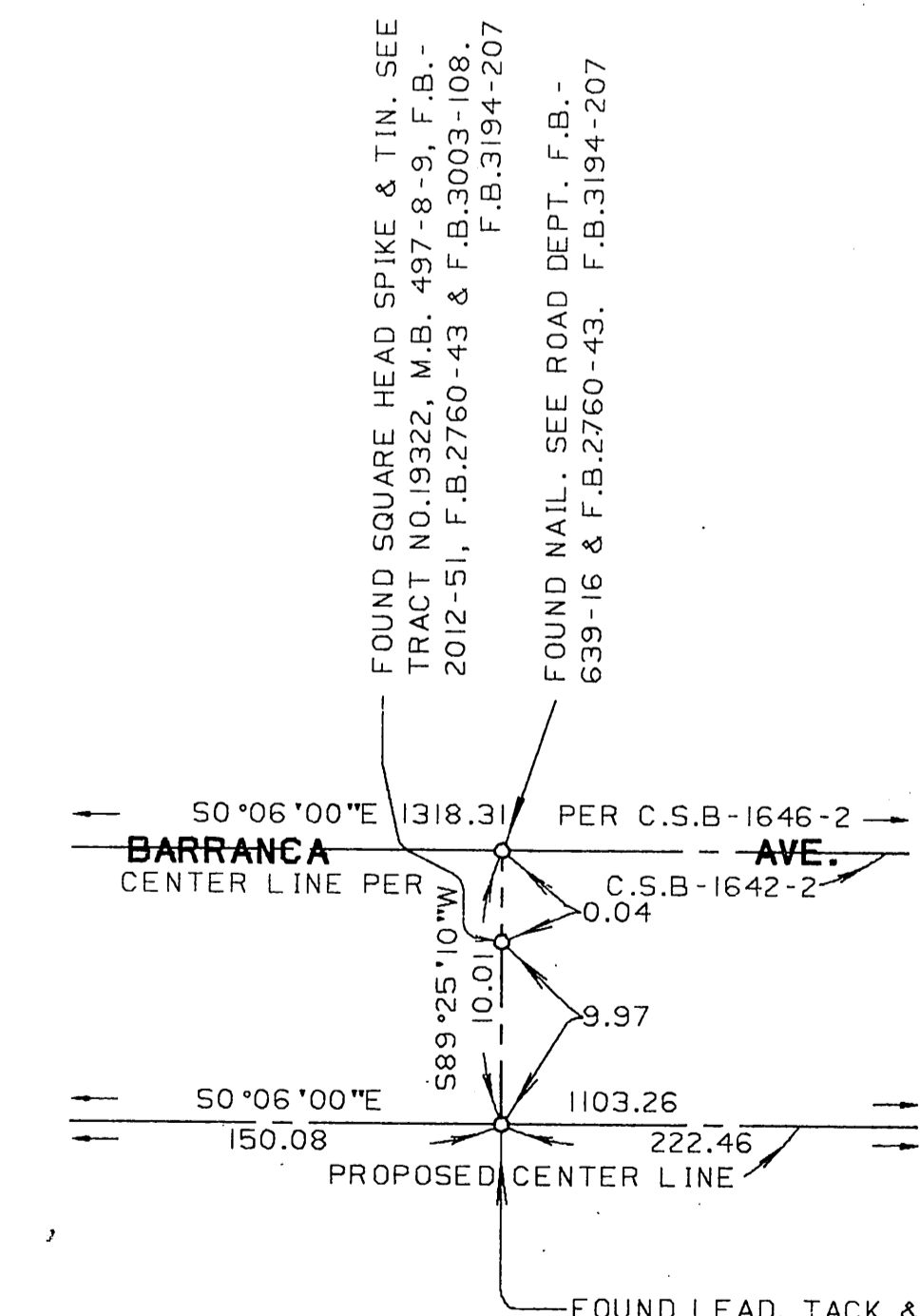


PORTION OF N.E. 1/4 SECTION 25  
T. 1 N., R. 10 W.

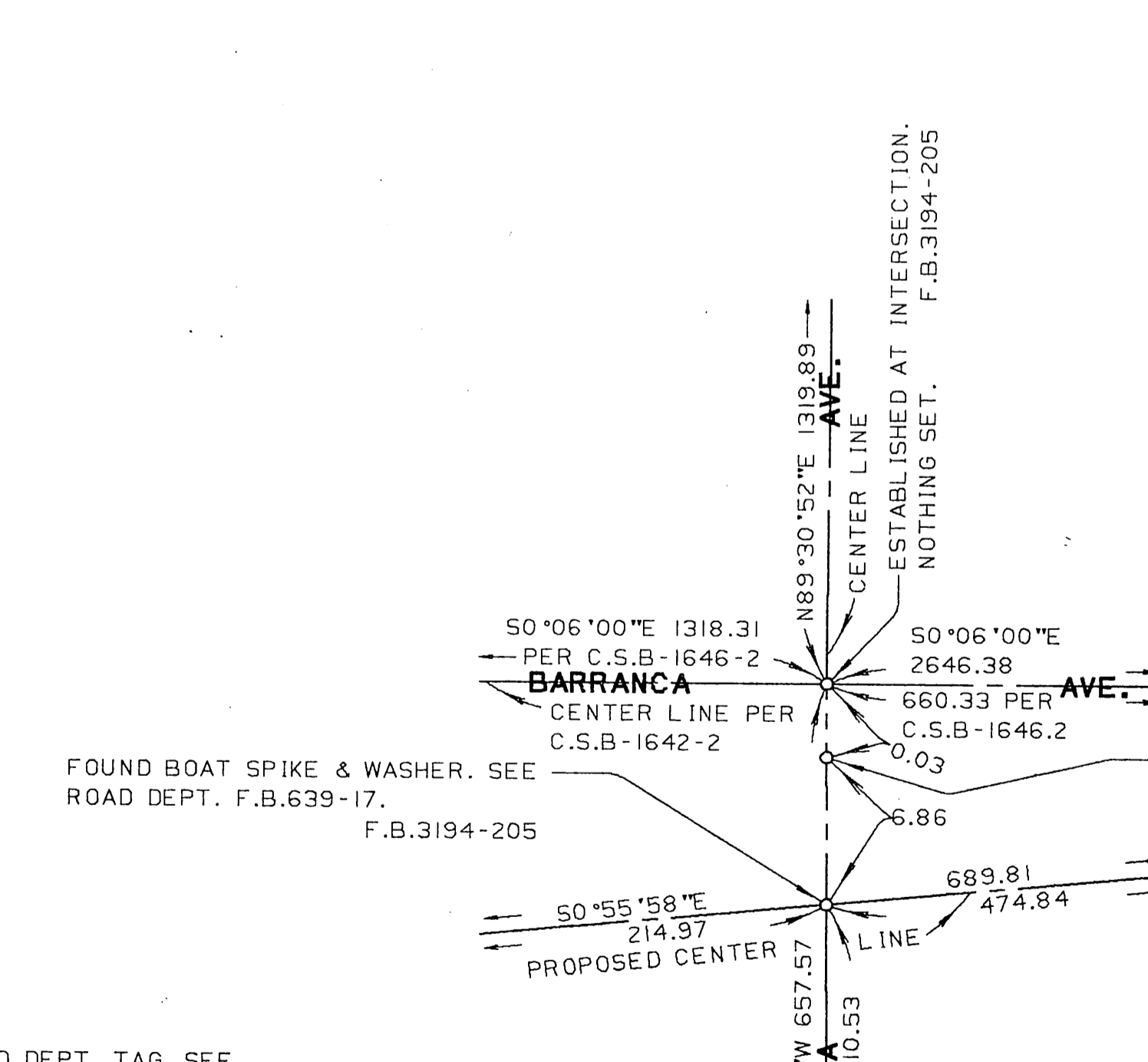
PORTION OF S.W. 1/4, S.E. 1/4  
T. 1 N., R. 10 W.

SECTION 25  
R. 10 W.

FOOTHILL  
BLVD.



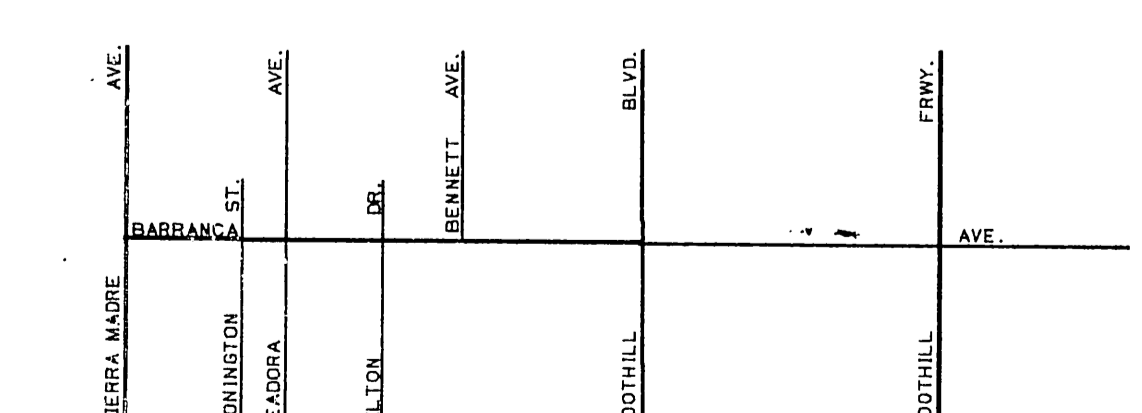
DETAIL 'A'  
NOT TO SCALE



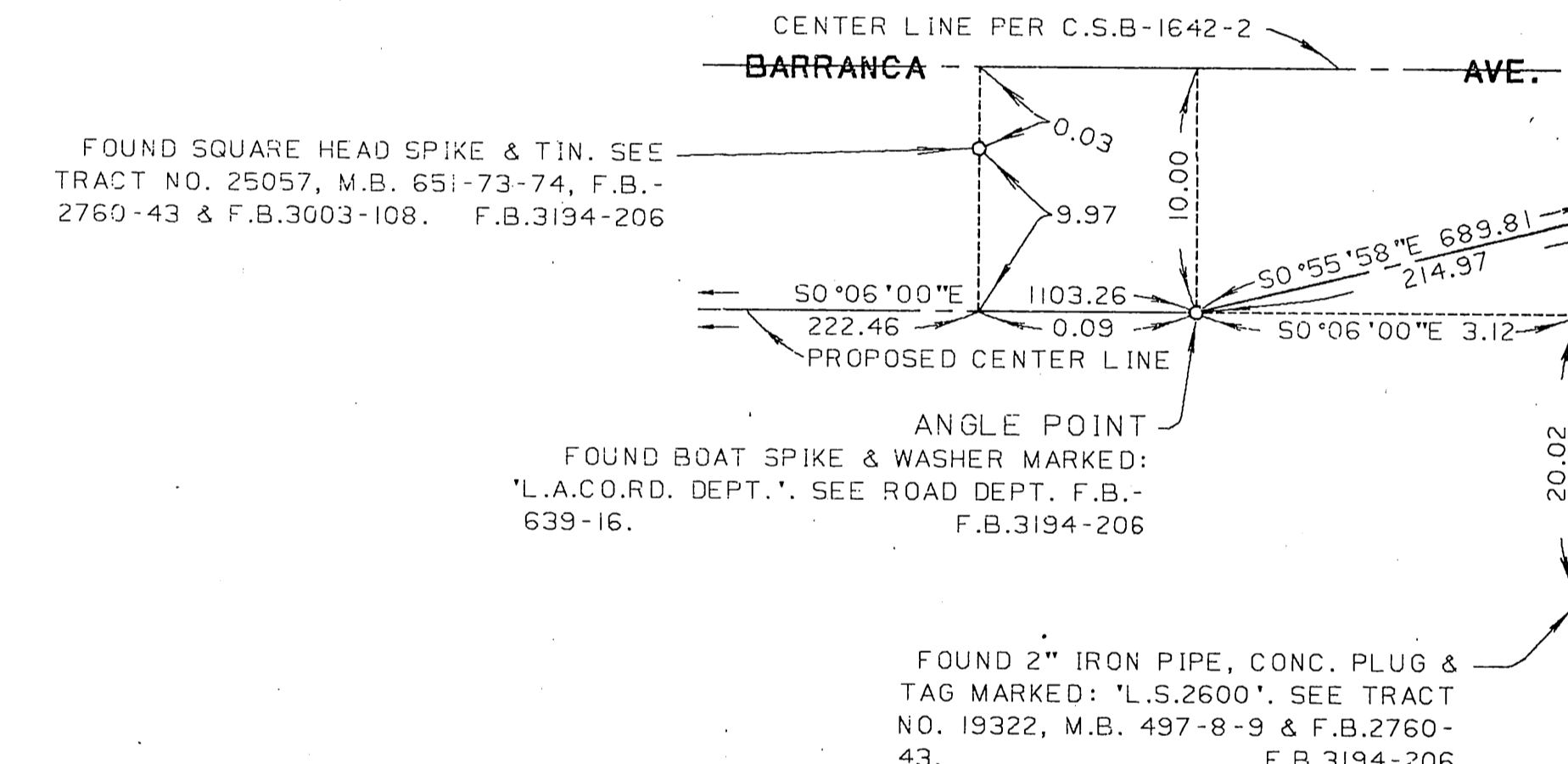
DETAIL 'B'  
NOT TO SCALE



DETAIL 'C'  
NOT TO SCALE



VICINITY MAP  
NOT TO SCALE



NOTE :  
THIS MAP DELINEATES THE REVISED ALIGNMENT OF BARRANCA AVE. (FORMERLY BEN LOMOND AVE.) ADOPTED BY THE I.E.C. DATED APRIL 27, 1967 AND SUPERSEDES C.S.B-1646 WITHIN THE LIMITS HERE-ON.

COUNTY OF LOS ANGELES DEPARTMENT OF PUBLIC WORKS T.A. TIDEMANSON - COUNTY ENGINEER PREPARED BY MAPPING AND PROPERTY MANAGEMENT DIVISION ROBERT L. SCAVARDA DIVISION ENGINEER SURVEYED BY J. H. BROWN CHECKED BY S. H. J. LARSEN DRAWN BY O. MASUDA	MAP OF <b>BARRANCA AVE.</b> FROM <b>BENNETT AVE.</b> TO <b>SIERRA MADRE AVE.</b>		COUNTY SURVEYOR'S MAP NO <b>B-5502</b> SHEET 1 OF 1 SHEETS FILED: <i>January 23</i> 1968 <i>Robert L. Scavarda</i> DEPUTY
	BASIS OF BEARINGS THE CENTERLINE OF SIERRA MADRE AVE. SHOWN AS IN 89°20'00"E1 ON C.S.B-1646-2		SURVEYED APRIL 1968 REFERENCE F.B. 3194
	JOB NUMBER INDEX MAP NO		