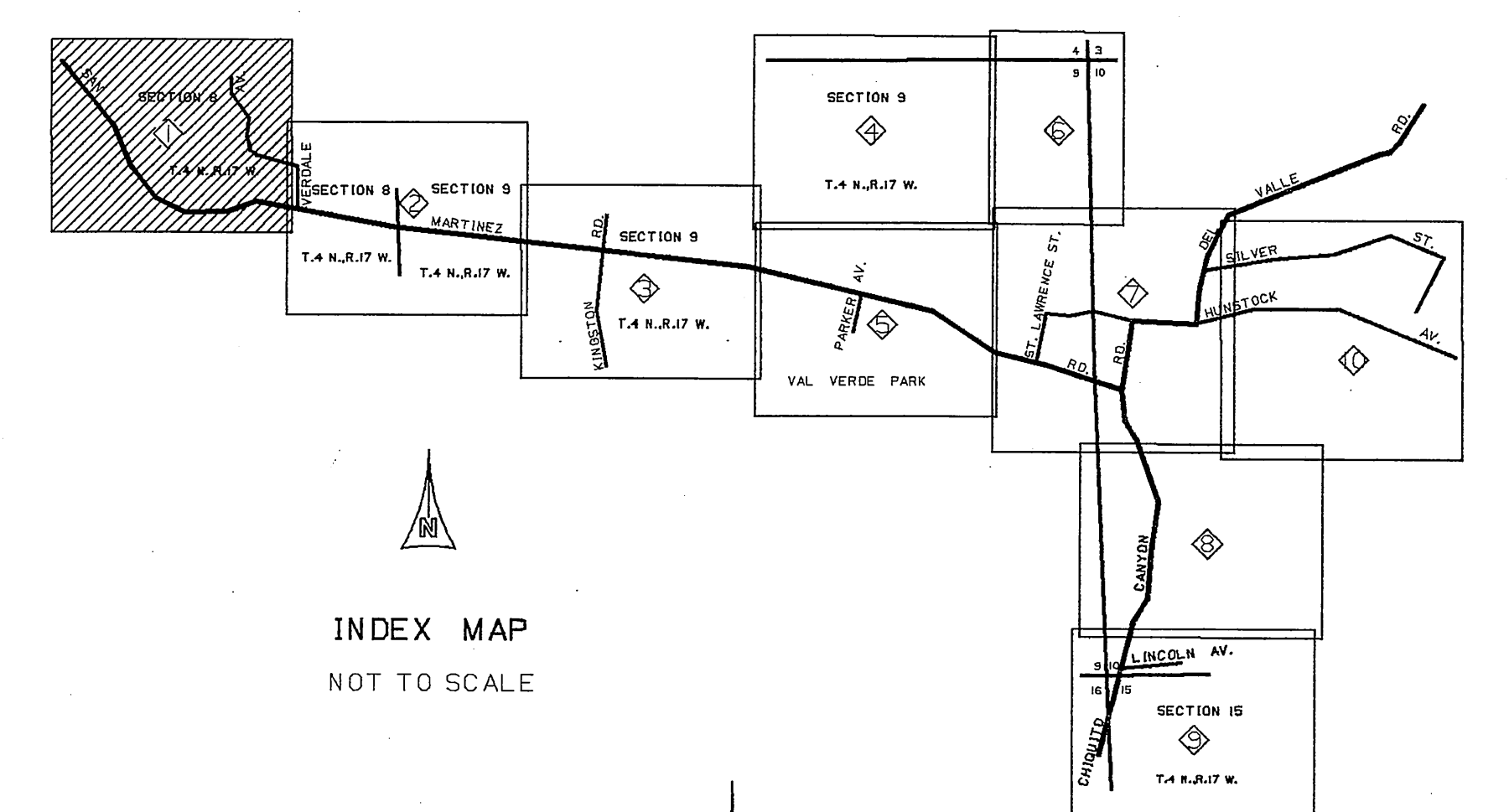


- 1 SECTION CORNER FOUND COUNTY SURVEYOR MONUMENT MARKED: SEE F.B.579-142,227,AND 233. F.B.3448-84
- 2 1/4 SECTION CORNER FOUND COUNTY SURVEYOR MONUMENT MARKED: SEE F.B.579-234. F.B.3448-93
- 3 SET 17\"/>
- 4 FOUND CONC. NAIL. SEE F.B.3166-7 F.B.3448-127
- 5 SET 2\"/>
- 6 SET SQUARE HEAD SPIKE IN PAVEMENT. F.B.3448-110,125.
- 7 ANGLE POINT - SET 2\"/>
- 8 SET 2\"/>
- 9 P.I. SET 2\"/>
- 10 P.I. SET 2\"/>
- 11 P.R.C. - SET 2\"/>
- 12 P.O.C. - SET 2\"/>
- 13 P.I. - FOUND 1-1/2\"/>
- 14 P.I. NO. 24 - SET 2\"/>
- 15 P.I. NO. 25 - SET 2\"/>
- 16 FOUND 3/4\"/>
- 17 P.I. NO. 26 - SET 2\"/>
- 18 P.I. NO. 27 - SET 2\"/>
- 19 FOUND 60D SPIKE AND TIN FLUSH IN PAVEMENT. NO REFERENCE. F.B.3448-138,139
- 20 P.I. - FOUND 2\"/>
- 21 P.I. - FOUND 1-1/2\"/>
- 22 FOUND 60D SPIKE AND TIN FLUSH IN PAVEMENT NO REFERENCE. F.B.3448-141
- 23 P.I. - FOUND 1-1/2\"/>
- 24 FOUND 60D SPIKE AND TIN IN PAVEMENT. NO REFERENCE. REMOVED SAME. F.B.3448-142
- 25 P.O.S.T. - FOUND 1\"/>
- 26 P.I. - SET 2\"/>
- 27 FOUND OLD 2\"/>
- 28 P.I. - FOUND 1\"/>
- 29 SET 2\"/>
- 30 TRACT CORNER - SET 2\"/>



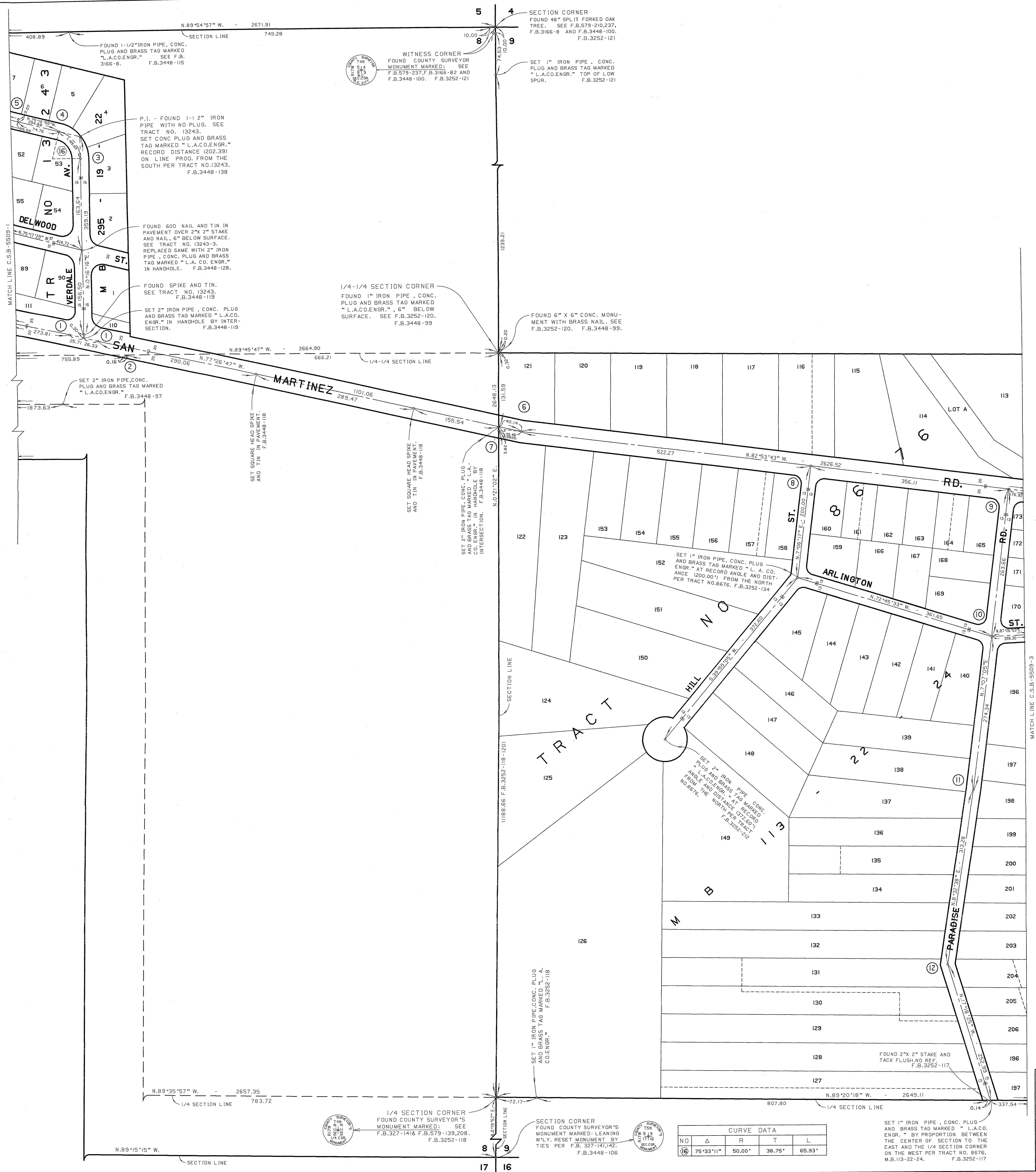
CURVE DATA					CURVE DATA				
NO	Δ	R	T	L	NO	Δ	R	T	L
①	42°00'05"	165.00	63.34	120.36	⑩	23°10'28"	215.00	44.08	86.36
②	29°01'02"	149.59	38.71	75.76	⑪	45°29'42"	150.00	62.89	119.11
③	109°00'36"	94.95	133.14	180.65	⑫	10°45'04"	200.00		37.53
④	54°31'19"	94.95		90.35	⑬	24°28'56"	200.00		85.46
⑤	54°29'17"	94.95		90.30	⑭	35°14'00"	200.00	63.51	122.39
⑥	60°26'02"	93.17	54.26	98.27	⑮	43°01'30"	188.17	74.17	141.30
⑦	0°02'22"	93.17		0.06	⑯				
⑧	60°23'40"	93.17		98.21	⑰				
⑨	59°37'30"	75.00	42.97	78.05	⑱				

COUNTY OF LOS ANGELES  
DEPARTMENT OF  
PUBLIC WORKS  
T. A. TIDEMANSON - COUNTY ENGINEER  
PREPARED BY  
MAPPING AND PROPERTY MANAGEMENT  
DIVISION  
AND  
SURVEY DIVISION  
SURVEYED BY J.V. SMITH & C. DALE  
CHECKED BY R.G. HILARIO  
DRAWN BY G.D. BAILEY

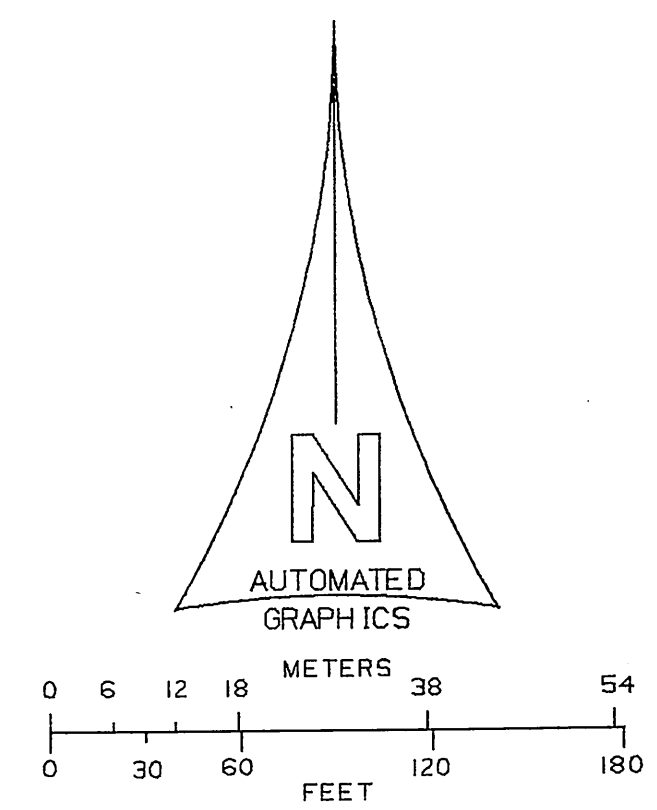
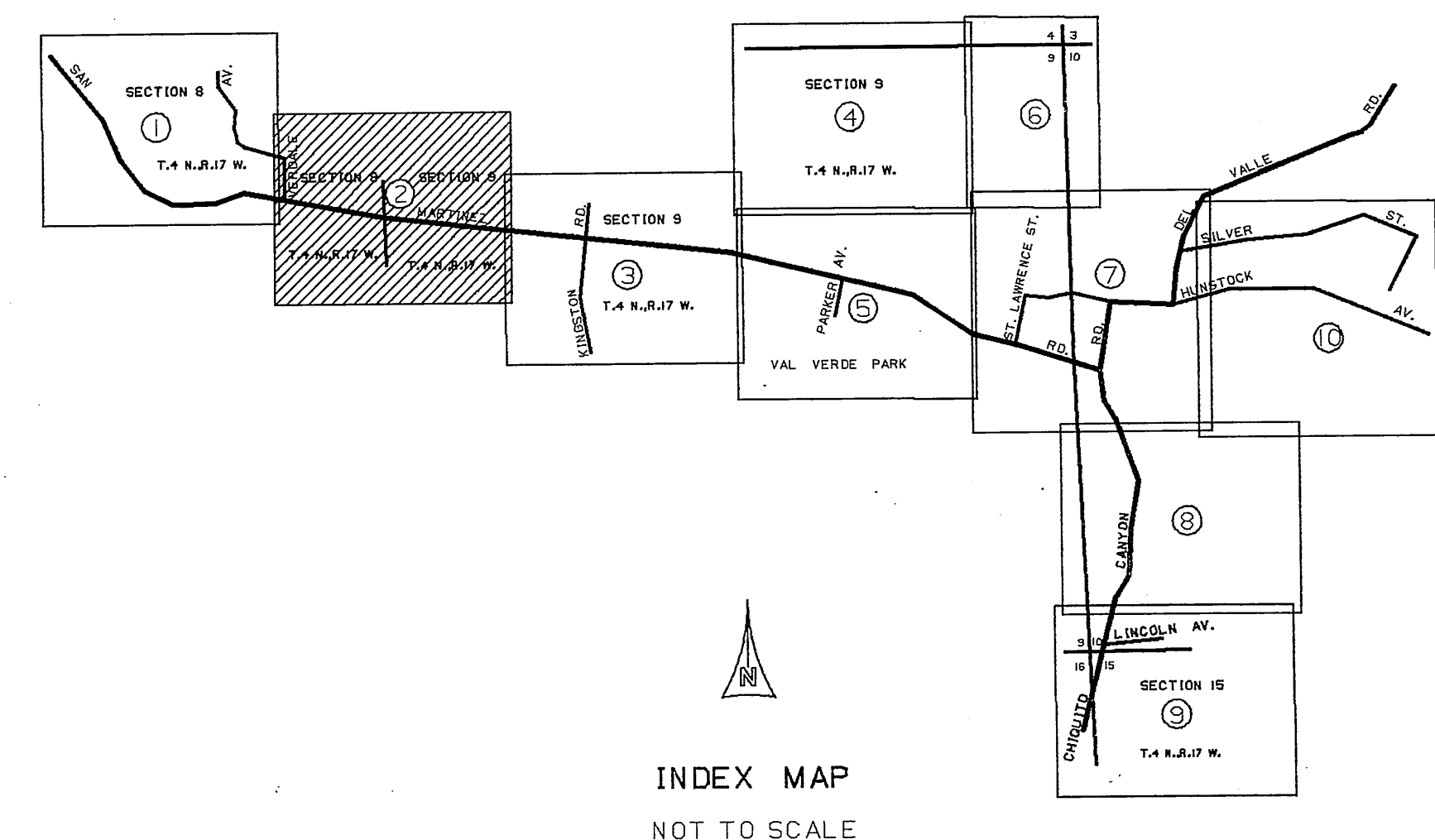
MAP OF  
A PORTION OF  
WATERWORKS DISTRICT 36  
( VAL VERDE AREA )  
BASIS OF BEARINGS  
THE SOUTH LINE OF THE NORTH 1/2 OF  
SECTION 8 T.4 N., R.17 W. (N.89°35'57\"/>

COUNTY SURVEYOR'S MAP NO  
B-5509  
SHEET 1 OF 10 SHEETS  
FILED: 2/3/2019  
BY: DEPUTY DIRECTOR  
SURVEYED  
JANUARY, 1964-JULY, 1971  
REFERENCE  
F.B.3166, F.B.3252 AND F.B.3448  
JOB NUMBER 0208.11 INDEX MAP NO 264-077





- ① SET SQUARE HEAD SPIKE IN PAVEMENT. F.B. 3448-119
- ② FOUND 1-1/2" IRON PIPE, CONC. PLUG AND TAG (TAG NOT LEGIBLE). SEE TRACT NO. 13243. F.B. 3448-104
- ③ B.C. - NOTHING SET.
- ④ E.C. - NOTHING SET.
- ⑤ FOUND 600 SPIKE AND TIN FLUSH WITH PAVEMENT, NO REF. F.B. 3448-138
- ⑥ P.I. NO. 23 FOUND 1" IRON PIPE, CONC. PLUG AND BRASS TAG MARKED "L.A.CO.ENGR." SEE F.B. 3252-122. F.B. 3448-117
- ⑦ FOUND SPIKE, WASHER AND TIN. SEE F.B. 3252-120. F.B. 3448-118
- ⑧ SET SPIKE, WASHER AND TIN BY PROPORTION BETWEEN P.I. NO. 22 TO THE EAST AND THE SECTION LINE ON THE WEST PER TRACT NO. 8676. F.B. 3252-122
- ⑨ SET 2" IRON PIPE, CONC. PLUG AND BRASS TAG MARKED "L.A.CO. ENGR." IN HANDHOLE. BY PROPORTION BETWEEN P.I. NO. 22 TO THE EAST AND THE SECTION LINE TO THE WEST PER TRACT NO. 8676. F.B. 3252-123, 209, 211
- ⑩ SET SPIKE, WASHER AND TIN BY PROPORTION BETWEEN THE 1/4 SECTION LINE TO THE SOUTH AND SAN MARTINEZ ROAD TO THE NORTH PER TRACT NO. 8676. F.B. 3252-131, 205
- ⑪ ANGLE POINT - SET SPIKE WASHER AND TIN BY PROPORTION BETWEEN THE 1/4 SECTION LINE TO THE SOUTH AND SAN MARTINEZ ROAD TO THE NORTH PER TRACT NO. 8676. F.B. 3252-132
- ⑫ ANGLE POINT - SET SPIKE WASHER AND TIN BY PROPORTION BETWEEN THE 1/4 SECTION LINE TO THE SOUTH AND SAN MARTINEZ ROAD TO THE NORTH PER TRACT NO. 8676. F.B. 3252-133



COUNTY OF LOS ANGELES  
DEPARTMENT OF  
PUBLIC WORKS  
T. A. TIDEMANSON - COUNTY ENGINEER  
PREPARED BY  
MAPPING AND PROPERTY MANAGEMENT  
DIVISION  
AND  
SURVEY DIVISION  
SURVEYED BY J.V. SMITH-R.C. DALE  
CHECKED BY R.H. HILARIO  
DRAWN BY G.D. BAILEY

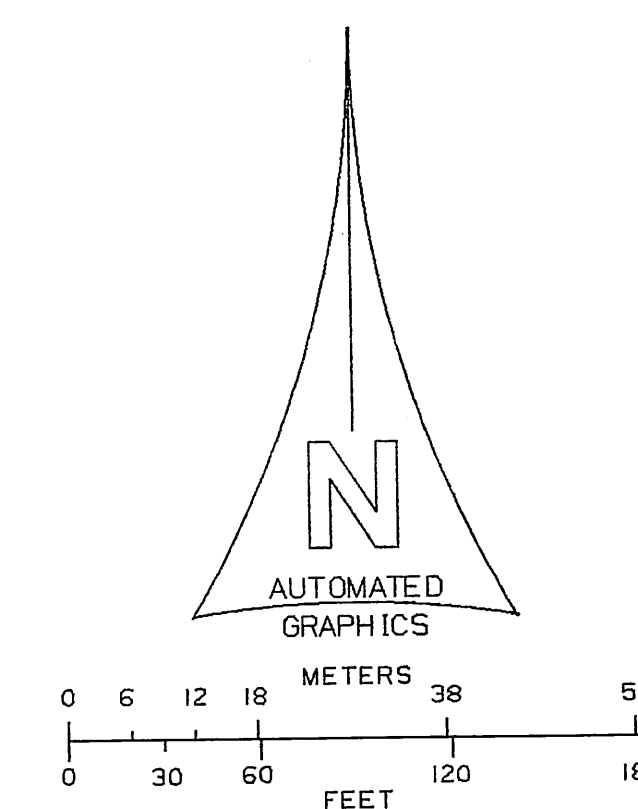
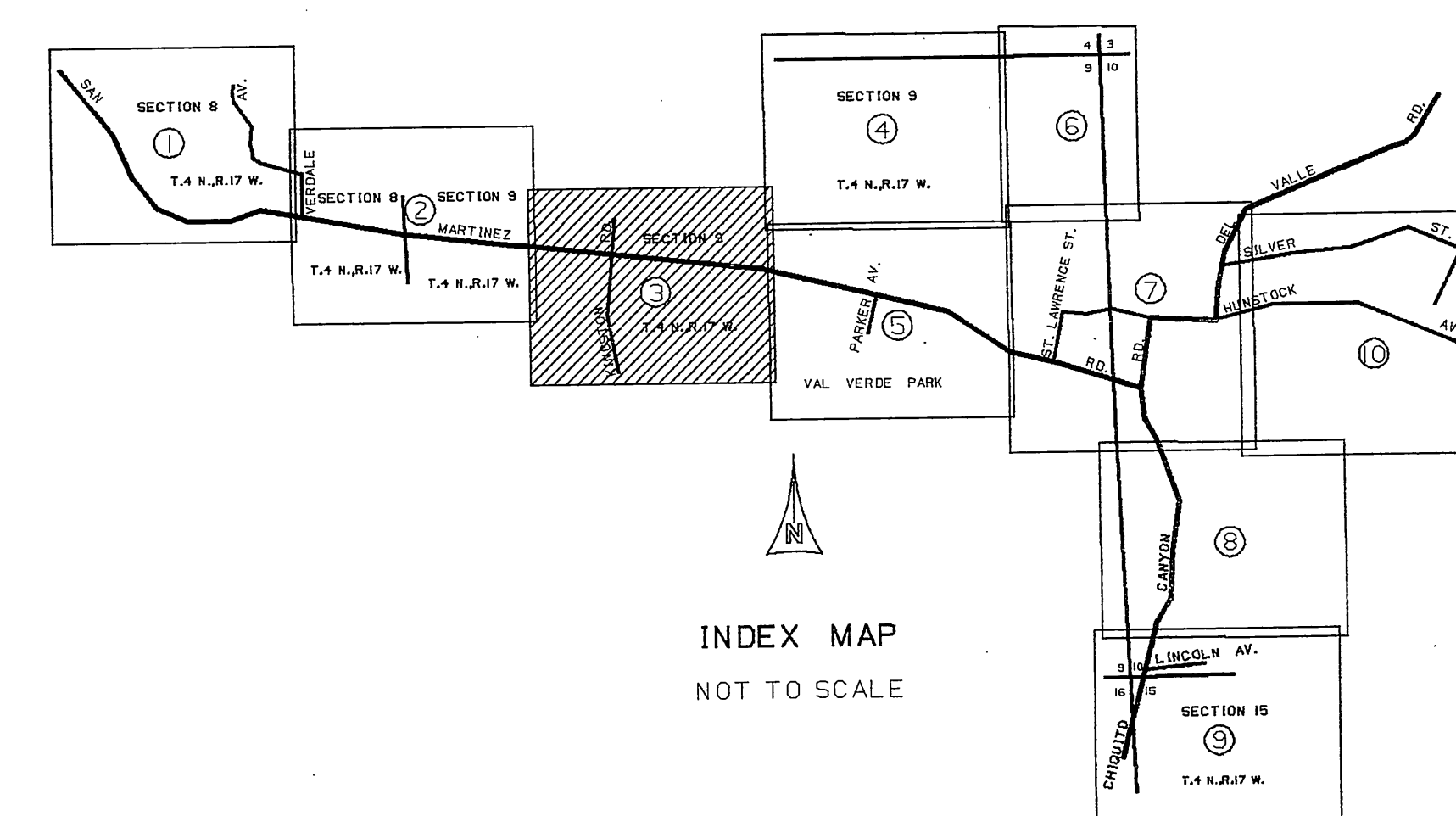
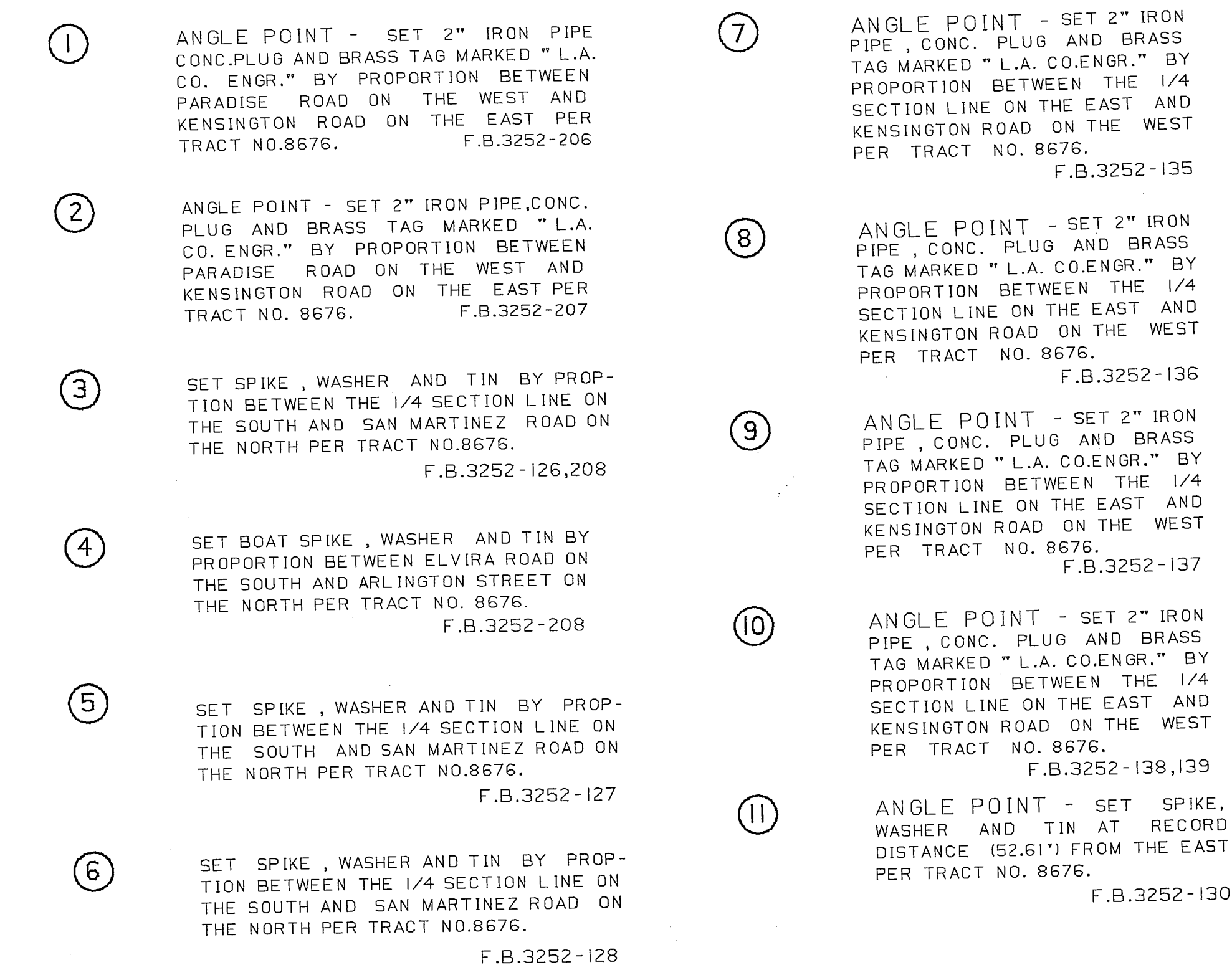
MAP OF  
A PORTION OF  
WATERWORKS DISTRICT 36  
(VAL VERDE AREA)

BASIS OF BEARINGS  
THE SOUTH LINE OF THE NORTH 1/2 OF  
SECTION 8 T.4 N., R.17 W. (N.89°35'57"W.)  
AS SHOWN ON C.S.B-5088.

COUNTY SURVEYOR'S MAP NO  
B-5509  
SHEET 2 OF 10 SHEETS  
FILED: 2-23-1967  
ASS. DEPUTY DIRECTOR  
SURVEYED  
JANUARY, 1964-JULY, 1971  
REFERENCE  
F.B. 3166, F.B. 3252 AND F.B. 3448  
JOB NUMBER 0208.11 INDEX MAP NO 264-077

CURVE DATA				
NO	Δ	R	T	L
(16)	75°33'11"	50.00'	38.75'	65.93'

SET 1" IRON PIPE, CONC. PLUG AND BRASS TAG MARKED "L.A.CO. ENGR." BY PROPORTION BETWEEN THE CENTER OF SECTION TO THE EAST AND THE 1/4 SECTION CORNER ON THE WEST PER TRACT NO. 8676. M.B. 113-22-24. F.B. 3252-117

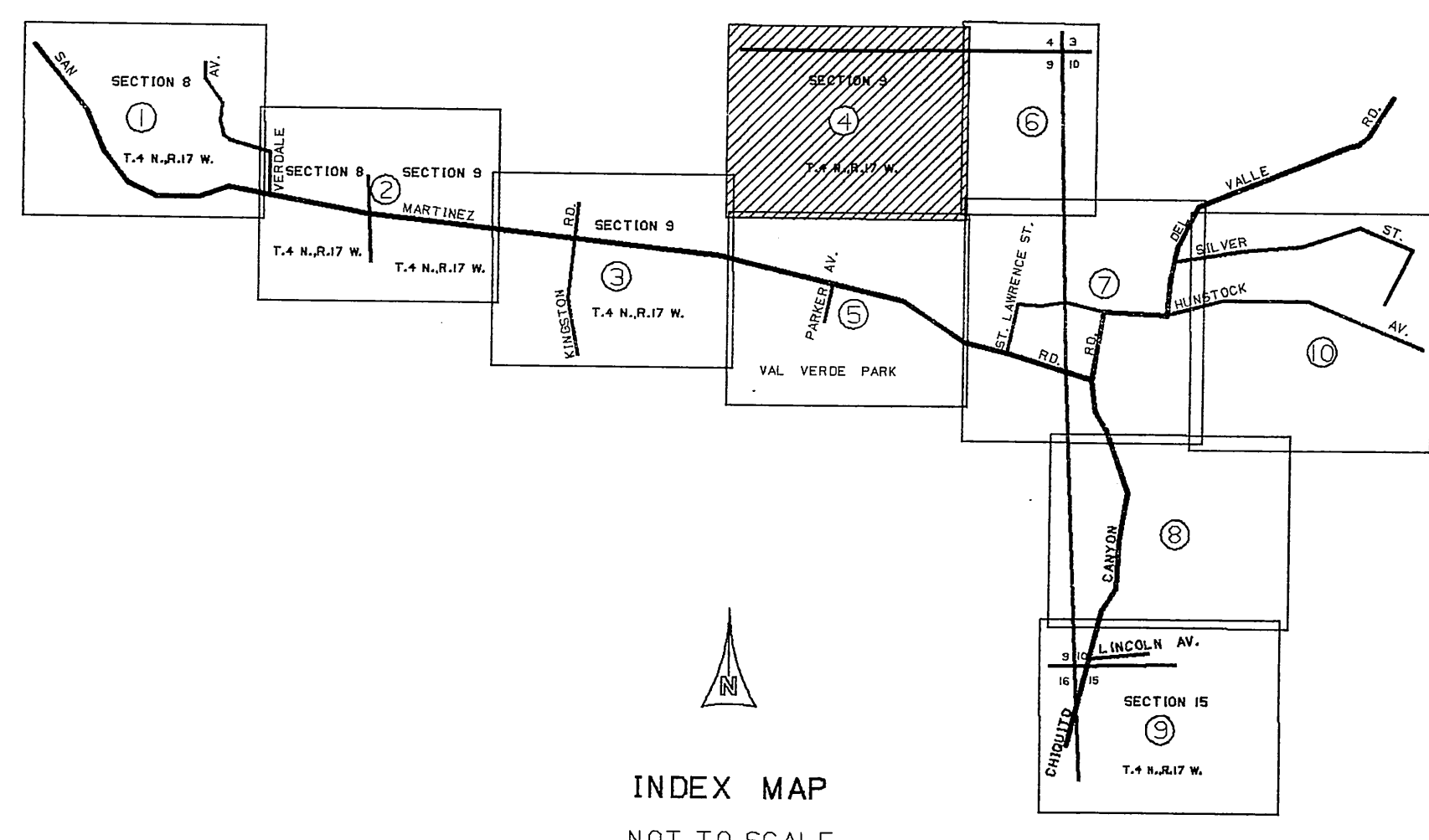
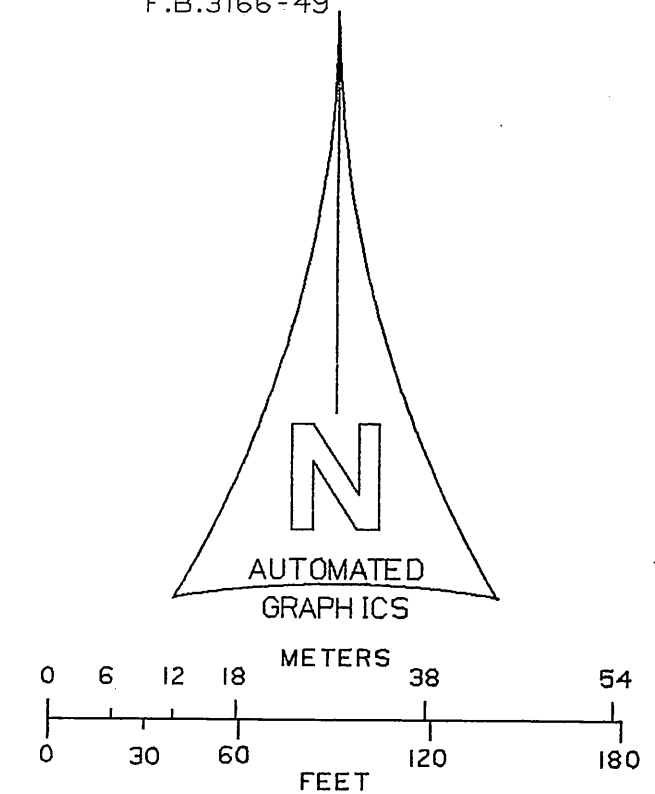


COUNTY OF LOS ANGELES DEPARTMENT OF PUBLIC WORKS T. A. TIDEMANSON - COUNTY ENGINEER PREPARED BY MAPPING AND PROJECT MANAGEMENT DIVISION AND SURVEY DIVISION SURVEYED BY <u>J. V. SMITH &amp; CO. DALE</u> CHECKED BY <u>J. R. GILHARLO</u> DRAWN BY <u>G. D. BAILEY</u>	MAP OF A PORTION OF WATERWORKS DISTRICT 36 ( VAL VERDE AREA )		COUNTY SURVEYOR'S MAP NO <b>B-5509</b> SHEET 3 OF 10 SHEETS FILED: <u>2/3</u> <u>1987</u> <u>ASS. DEPUTY DIRECTOR</u> JANUARY 1964 - JULY 1971 REFERENCE F.B.3166, F.B.3252 AND F.B.3448
	BASIS OF BEARINGS THE SOUTH LINE OF THE NORTH 1/2 OF SECTION 16, T.4 N., R.17 W. (S. 35° 57' W.) AS SHOWN ON C.S.B. 5988.		JOB NUMBER 0208.11
			INDEX MAP NO 264-077



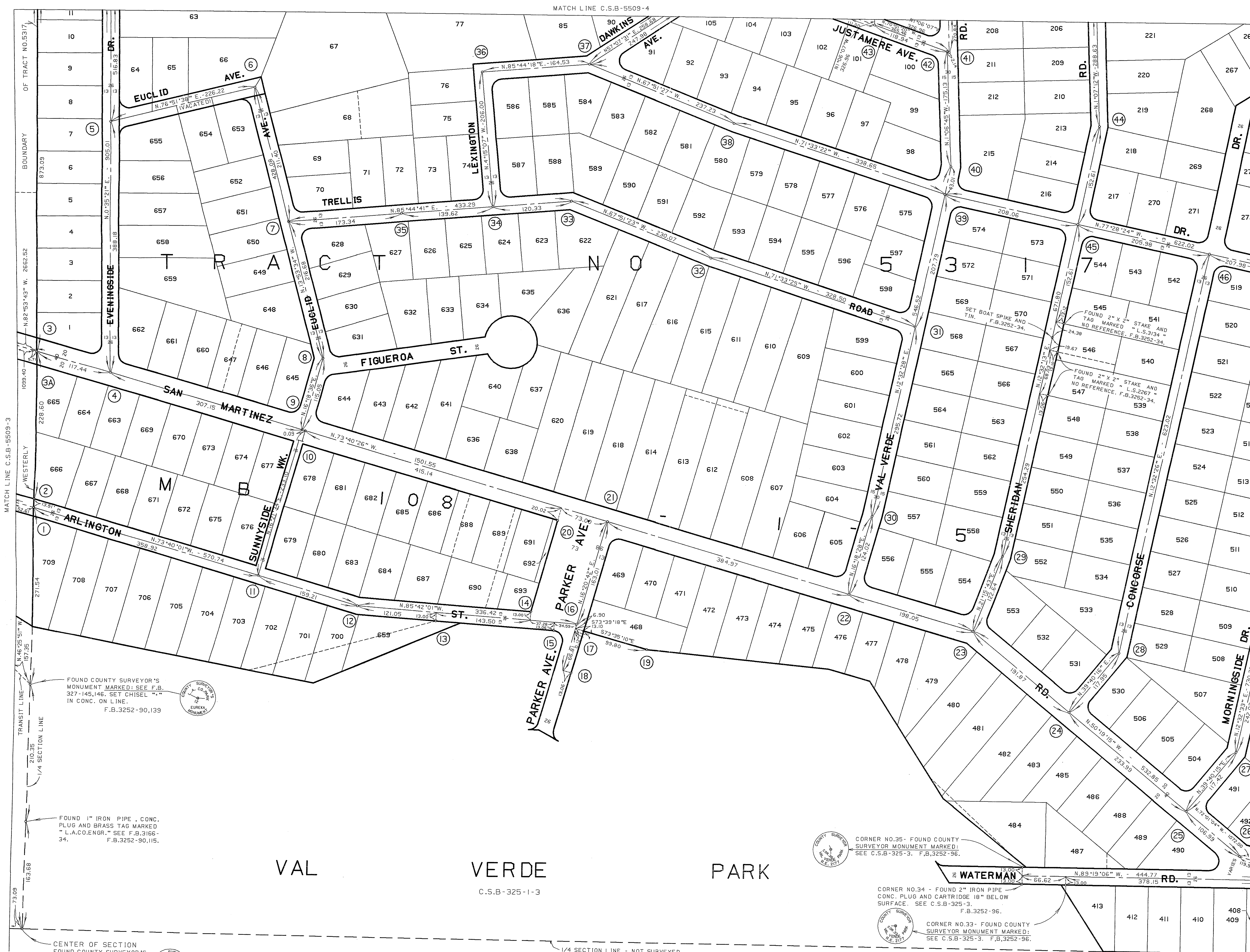


1. P.I. - SET 2" IRON PIPE, CONC. PLUG AND BRASS TAG MARKED "L.A. CO. ENGR." AT RECORD ANGLE AND DISTANCE (136.71') FROM THE EAST PER TRACT NO. 5317, M.B. 108-1-5. SEE F.B.3252-220. F.B.3166-36.
2. SET 2" IRON PIPE, CONC. PLUG AND BRASS TAG MARKED "L.A. CO. ENGR." AT RECORD ANGLE AND DISTANCE (18.36') FROM THE SOUTHWEST PER TRACT NO. 5317, M.B. 108-1-5. F.B.3819-26.
3. SET 2" IRON PIPE, CONC. PLUG AND BRASS TAG MARKED "L.A. CO. ENGR." AT RECORD ANGLE AND DISTANCE (346.34') FROM THE EAST PER TRACT NO. 5317, M.B. 108-1-5. F.B.3819-25.
4. SET 2" IRON PIPE, CONC. PLUG AND BRASS TAG MARKED "L.A. CO. ENGR." AT RECORD ANGLE AND DISTANCE (176.16') FROM THE EAST PER TRACT NO. 5317, M.B. 108-1-5. F.B.3819-24.
5. SET 2" IRON PIPE, CONC. PLUG AND BRASS TAG MARKED "L.A. CO. ENGR." AT RECORD ANGLE AND DISTANCE (198.37') FROM THE EAST PER TRACT NO. 5317, M.B. 108-1-5. SEE F.B.3166-39-41. F.B.3819-21.
6. SET 2" IRON PIPE, CONC. PLUG AND BRASS TAG MARKED "L.A. CO. ENGR." BY PROPORTION BETWEEN DAWKINS AVE. ON THE SOUTH AND P.I. 4 ON THE NORTH PER TRACT NO. 5317, M.B. 108-1-5. SEE F.B.3166-39-41. F.B.3819-21.
7. P.I. NO. 3 - SET BOAT SPIKE, WASHER AND TIN BY PROPORTION BETWEEN DAWKINS AVE. ON THE SOUTH AND P.I. 1 ON THE NORTH PER TRACT NO. 5317, M.B. 108-1-5. SEE F.B.3166-37-42. F.B.3819-21.
- 7A. P.I. NO. 4 - SET BOAT SPIKE, WASHER AND TIN BY PROPORTION BETWEEN DAWKINS AVE. ON THE NORTH AND VAL VERDE ROAD ON THE EAST PER TRACT NO. 5317, SEE F.B.3166-42. F.B.3819-22.
8. SET 2" IRON PIPE, CONC. PLUG AND BRASS TAG MARKED "L.A. CO. ENGR." BY INTERSECTION. F.B.3252-216.
9. SET BOAT SPIKE, WASHER AND TIN AT CAL. DISTANCE (142.49') FROM THE SOUTH PER TRACT NO. 5317, SEE F.B.3252-216. F.B.3819-22.
10. SET BOAT SPIKE, WASHER AND TIN BY PROPORTION BETWEEN P.I. 4 TO THE WEST AND VAL VERDE ROAD ON THE EAST PER TRACT NO. 5317, M.B. 108-1-5. F.B.3166-43.
11. SET 1" IRON PIPE, CONC. PLUG AND BRASS TAG MARKED "L.A. CO. ENGR." BY PROPORTION BETWEEN JUSTAMERE AVE. ON THE NORTH AND SOUTH PER TRACT NO. 5317, SEE F.B.3166-37-42. F.B.3819-19.
12. SET BOAT SPIKE, WASHER AND TIN BY PROPORTION BETWEEN P.I. 2 ON THE NORTH AND P.I. 3 ON THE SOUTH PER TRACT NO. 5317, SEE F.B.3166-37-42. F.B.3819-20.
13. P.I. NO. 2 - SET BOAT SPIKE, WASHER AND TIN BY PROPORTION BETWEEN DAWKINS AVE. ON THE SOUTH AND P.I. 1 ON THE NORTH PER TRACT NO. 5317, SEE F.B.3166-37-42. F.B.3819-18.
14. SET BOAT SPIKE, WASHER AND TIN BY PROPORTION BETWEEN THE SECTION LINE ON THE NORTH AND VAL VERDE ROAD ON THE EAST PER TRACT NO. 5317, SEE F.B.3166-37. F.B.3819-17.
15. P.I. NO. 1 - SET BOAT SPIKE, WASHER AND TIN BY PROPORTION BETWEEN THE SECTION LINE ON THE NORTH AND VAL VERDE ROAD ON THE EAST PER TRACT NO. 5317, SEE F.B.3166-37. F.B.3819-17.
16. SET BOAT SPIKE, WASHER AND TIN AT RECORD DISTANCE (148.99') FROM P.I. NO. 1 ON THE SOUTH PER TRACT NO. 5317, M.B. 108-1-5. F.B.3252-219.
17. P.I. - SET 1" IRON PIPE, CONC. PLUG AND BRASS TAG MARKED "L.A. CO. ENGR." BY PROPORTION BETWEEN THE SECTION LINE ON THE NORTH AND JUSTAMERE AVE. TO THE WEST PER TRACT NO. 5317. F.B.3166-49.
18. S.W. COR. LOT 136 - SET 2" IRON PIPE, CONC. PLUG AND BRASS TAG MARKED "L.A. CO. ENGR." AT RECORD ANGLE AND DISTANCE (13.00') FROM THE EAST PER TRACT NO. 5317. F.B.3166-49.
19. P.I. - SET 1" IRON PIPE, CONC. PLUG AND BRASS TAG MARKED "L.A. CO. ENGR." BY PROPORTION BETWEEN THE SECTION LINE ON THE NORTH AND JUSTAMERE AVE. TO THE WEST PER TRACT NO. 5317. F.B.3166-48.
20. SET 1" IRON PIPE, CONC. PLUG AND BRASS TAG MARKED "L.A. CO. ENGR." BY PROPORTION BETWEEN THE SECTION LINE ON THE NORTH AND JUSTAMERE AVE. TO THE WEST PER TRACT NO. 5317. F.B.3166-47.
21. S.E. COR. LOT 136 - SET 1" IRON PIPE, CONC. PLUG AND BRASS TAG MARKED "L.A. CO. ENGR." BY PROPORTION BETWEEN THE SECTION LINE TO THE NORTH AND THE ANGLE POINT ON THE SOUTH PER TRACT NO. 5317. F.B.3166-51.
22. N.W. COR. LOT 155 - SET 1" IRON PIPE, CONC. PLUG AND BRASS TAG MARKED "L.A. CO. ENGR." BY PROPORTION BETWEEN THE SECTION LINE TO THE NORTH AND THE ANGLE POINT ON THE SOUTH PER TRACT NO. 5317. F.B.3166-51.
23. ANGLE POINT - SET 1" IRON PIPE, CONC. PLUG AND BRASS TAG MARKED "L.A. CO. ENGR." BY PROPORTION BETWEEN THE SECTION LINE TO THE NORTH AND JUSTAMERE AVE. ON THE SOUTH PER TRACT NO. 5317, M.B. 108-1-5. F.B.3166-52.
24. P.I. NO. 6 - SET 1" X 2" STAKE AND NAIL BY PROPORTION BETWEEN THE SECTION LINE TO THE NORTH AND SAN MARTINEZ ROAD TO THE SOUTH PER TRACT NO. 5317, M.B. 108-1-5. F.B.3166-25.
25. P.I. NO. 5 - SET BOAT SPIKE, WASHER AND TIN BY PROPORTION BETWEEN THE SECTION LINE ON THE NORTH AND SAN MARTINEZ ROAD ON THE SOUTH PER TRACT NO. 5317, M.B. 108-1-5. F.B.3166-24.
26. N.E. COR. LOT 155 - SET 2" IRON PIPE, CONC. PLUG AND BRASS TAG MARKED "L.A. CO. ENGR." AT RECORD ANGLE AND DISTANCE (13.00') FROM THE EAST PER TRACT NO. 5317, M.B. 108-1-5. F.B.3166-23.
27. SET BOAT SPIKE, WASHER AND TIN ON LOT LINE PROD. TO THE WEST. F.B.3166-23.
28. ESTABLISHED BY PROPORTION BETWEEN P.I. NO. 4 ON THE NORTH AND P.I. NO. 5 ON THE SOUTH PER TRACT NO. 5317, M.B. 108-1-5. NOTHING SET. F.B.3166-23.
29. P.I.'S NO. 2, 3, 4 - SET BOAT SPIKE, WASHER AND TIN BY PROPORTION BETWEEN THE SECTION LINE TO THE NORTH AND SAN MARTINEZ ROAD ON THE SOUTH PER TRACT NO. 5317, M.B. 108-1-5. F.B.3166-21,22,23.
30. P.I. NO. 2 - SET 1" IRON PIPE, CONC. PLUG AND BRASS TAG MARKED "L.A. CO. ENGR." BY PROPORTION BETWEEN SAN MARTINEZ ROAD ON THE SOUTH AND POCAHONTAS DRIVE ON THE NORTH PER TRACT NO. 5317, M.B. 108-1-5. F.B.3252-29.
31. SET 2" IRON PIPE, CONC. PLUG AND BRASS TAG MARKED "L.A. CO. ENGR." BY PROPORTION BETWEEN THE SECTION LINE TO THE NORTH AND P.I. NO. 2 TO THE NORTH PER TRACT NO. 5317. F.B.3252-30.
32. P.I. NO. 3 - SET 1" IRON PIPE, CONC. PLUG AND BRASS TAG MARKED "L.A. CO. ENGR." BY PROPORTION BETWEEN SAN MARTINEZ ROAD ON THE SOUTH AND POCAHONTAS DRIVE ON THE NORTH PER TRACT NO. 5317, M.B. 108-1-5. F.B.3252-31.

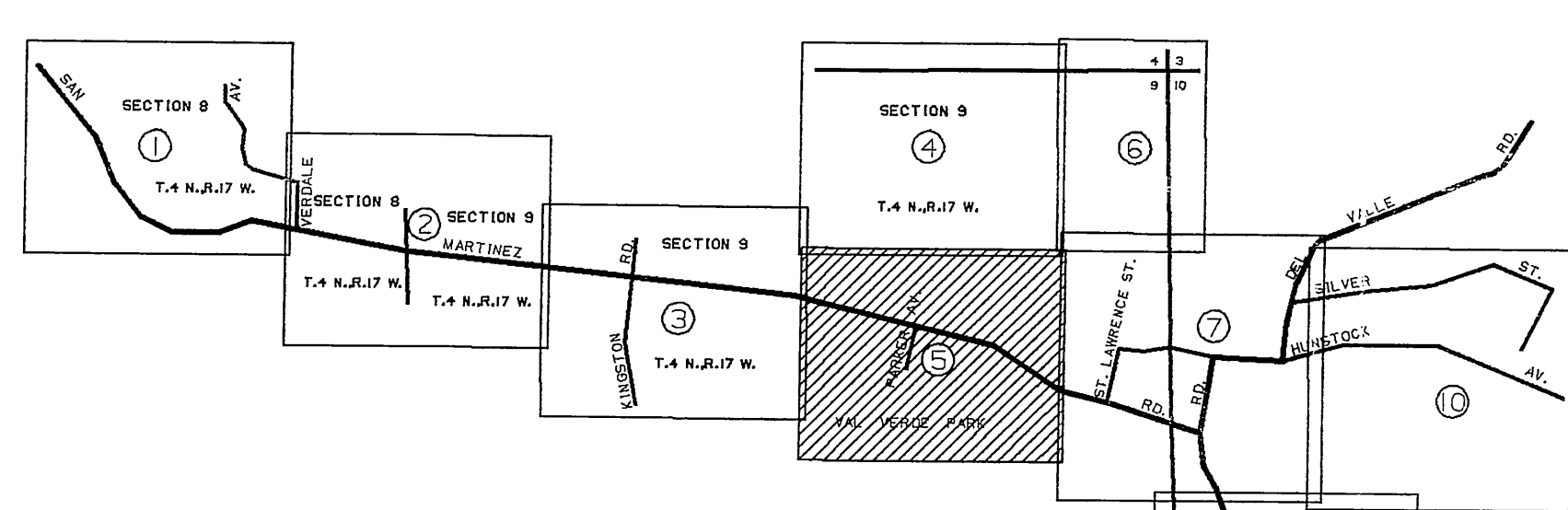


COUNTY OF LOS ANGELES DEPARTMENT OF PUBLIC WORKS T. A. IDEMANSON - COUNTY ENGINEER PREPARED BY MAPPING AND PROPERTY MANAGEMENT DIVISION AND SURVEY DIVISION SURVEYED BY J. V. SMITH - R. DALE CHECKED BY J. B. HILARIO DRAWN BY G. D. BAILEY	MAP OF A PORTION OF WATERWORKS DISTRICT 36 (VAL VERDE AREA)		COUNTY SURVEYOR'S MAP NO. <b>B-5509</b> SHEET 4 OF 10 SHEETS FILED: 2-2-1982 BY: G. D. BAILEY DIRECTOR SURVEYED JANUARY, 1964-JULY, 1971 REFERENCE F.B.3166, F.B.3252 AND F.B.3448 JOB NUMBER 0208-11 INDEX MAP NO. 264-077
	BASIS OF BEARINGS THE SOUTH LINE OF THE NORTH 1/2 OF SECTION 9 T.4 N., R.17 W. (N.89°35'57" W.) AS SHOWN ON C.S.B-5088.		





- 1 FOUND DRILL ROD, L. & T. LEAKING. SET 2" IRON PIPE, CONC. PLUG AND BRASS TAG MARKED "L.A.C.O. ENGR." AT RECORD DISTANCE 103.91' FROM THE NORTH PER F.B.579-10, F.B.3252-91,130.
- 2 FOUND 2" X 2" STAKE AND NAIL. SEE F.B.579-10, F.B.3252-91,130.
- 3 FOUND 2" IRON PIPE, CONC. PLUG AND CARTRIDGE. SEE F.B.3166-34 AND F.B.1277-207, SET HANDHOLE. F.B.3252-92,125.
- 3A P.I. NO. 22 - FOUND 2" IRON PIPE, CONC. PLUG AND TACK, 20" BELOW SURFACE. SEE F.B.1277-207 AND F.B.3166-34. F.B.3252-125.
- 4 SET 2" IRON PIPE, CONC. PLUG AND BRASS TAG MARKED "L.A.C.O. ENGR." BY PROPORTION BETWEEN PARKER AVENUE ON THE EAST AND THE WLY BOUNDARY OF TRACT NO. 5317, M.B.108-1-5. F.B.3252-76.
- 5 SET 2" IRON PIPE, CONC. PLUG AND BRASS TAG MARKED "L.A.C.O. ENGR." BY PROPORTION BETWEEN THE P.I. TO THE NORTH AND SAN MARTINEZ ROAD ON THE SOUTH PER TRACT NO.5317. F.B.3252-77.
- 6 P.I. NO. 2 - SET 2" IRON PIPE, CONC. PLUG AND BRASS TAG MARKED "L.A.C.O. ENGR." BY PROPORTION BETWEEN SAN MARTINEZ RD. ON THE SOUTH AND EUCLID AVE. ON THE WEST PER TRACT NO. 5317. F.B.3252-82.
- 7 SET 2" IRON PIPE, CONC. PLUG AND BRASS TAG MARKED "L.A.C.O. ENGR." BY PROPORTION BETWEEN SAN MARTINEZ RD. ON THE SOUTH AND EUCLID AVE. ON THE WEST PER TRACT NO. 5317. F.B.3252-80.
- 8 P.I. NO. 1 - SET 2" IRON PIPE, CONC. PLUG AND BRASS TAG MARKED "L.A.C.O. ENGR." BY PROPORTION BETWEEN SAN MARTINEZ RD. ON THE SOUTH AND EUCLID AVE. ON THE WEST PER TRACT NO. 5317. F.B.3252-80.
- 9 SET 2" IRON PIPE, CONC. PLUG AND BRASS TAG MARKED "L.A.C.O. ENGR." IN HANDHOLE. "L.S.3134" NO REFERENCE. F.B.3252-34.
- 10 ESTABLISHED AT RECORD DISTANCE 103.91' FROM THE WEST PER TRACT NO. 5317, M.B.108-1-5. NOTHING SET. F.B.3252-75.
- 11 SET BOAT SPIKE, WASHER AND TIN BY PROPORTION BETWEEN THE 1/4 SECTION LINE ON THE WEST AND THE ANGLE POINT TO THE EAST PER TRACT NO.5317. F.B.3252-93.
- 12 ANGLE POINT - FOUND 2" X 2" STAKE AND NAIL. SEE C.S.B-325-3. REPLACED SAME WITH 1" IRON PIPE, CONC. PLUG AND BRASS TAG MARKED "L.A.C.O. ENGR." F.B.3252-94.
- 13 CORNER NO.8 - FOUND 2" IRON PIPE, CONC. PLUG AND SPIKE. SEE C.S.B-325-3. F.B.3252-94.
- 14 FOUND COUNTY SURVEYOR MONUMENT MARKED. SEE C.S.B-325-3. F.B.3252-95.
- 15 CORNER NO. 7 - FOUND 2" IRON PIPE, CONC. PLUG AND COPPER WIRE. SEE C.S.B-325-3. F.B.3252-95.
- 16 SET 1" X 2" STAKE AND NAIL BY INTERSECTION. F.B.3252-95.
- 17 CORNER NO. 2 - FOUND COUNTY SURVEYOR MONUMENT MARKED. SEE C.S.B-325-3. F.B.3252-95.
- 18 CORNER NO. 3 - FOUND COUNTY SURVEYOR MONUMENT MARKED. SEE C.S.B-325-3. F.B.3252-95.
- 19 CORNER NO. 1 - FOUND COUNTY SURVEYOR MONUMENT MARKED. SEE C.S.B-325-3. F.B.3252-95.
- 20 FOUND COUNTY SURVEYOR MONUMENT MARKED. SEE C.S.B-325-3. F.B.3252-74.
- 21 FOUND 2" IRON PIPE, CONC. PLUG AND CARTRIDGE, 16" BELOW SURFACE. SEE F.B.1277-205, REPLACED CART RIDGE WITH BRASS TAG MARKED "L.A.C.O. ENGR." IN HANDHOLE. F.B.3252-74.
- 22 SET NAIL BY PROPORTION BETWEEN THE P.I. TO THE EAST AND THE WEST BOUNDARY OF TRACT NO. 7317, M.B.108-1-5, PER SAID TRACT. F.B.3166-30.
- 23 P.I. NO. 21 - FOUND HEX ROD LEAD AND TACK, 16" BELOW SURFACE. SEE F.B.1277-203 AND F.B.3166-23. F.B.3252-36.
- 24 NOTHING FOUND. SET 1" IRON PIPE, CONC. PLUG AND BRASS TAG MARKED "L.A.C.O. ENGR." 12" BELOW SURFACE IN HANDHOLE AT RECORD DISTANCE 191.87' PER F.B.1277-202-203. F.B.3252-54.
- 25 NOTHING FOUND. SET 2" IRON PIPE IN CONC. PLUG AND BRASS TAG MARKED "L.A.C.O. ENGR." 14" BELOW SURFACE HANDHOLE AT RECORD DISTANCE 106.99' FROM P.I. NO. 20 PER F.B.1277-201. F.B.3252-53.
- 26 P.I. NO. 20 - FOUND LEAD AND TACK ON TOP OF 3/4" DRILL. STEEL 12" BELOW SURFACE. SEE F.B.1277-200-201. SET HANDHOLE. F.B.3252-52.
- 27 P.I. - SET BOAT SPIKE, WASHER AND TIN BY PROPORTION BETWEEN SAN MARTINEZ ROAD ON THE NORTH AND LEXINGTON DRIVE ON THE SOUTH PER TRACT NO. 5317. F.B.3252-55.
- 28 P.I. - SET BOAT SPIKE, WASHER AND TIN BY PROPORTION BETWEEN SAN MARTINEZ ROAD ON THE SOUTH AND LEXINGTON DRIVE ON THE NORTH PER TRACT NO. 5317. F.B.3252-55.
- 29 P.I. NO. 5 - SET LARGE BOAT SPIKE, WASHER AND TIN BY PROPORTION BETWEEN SAN MARTINEZ ROAD ON THE SOUTH AND POCAHONTAS DRIVE ON THE NORTH PER TRACT NO. 5317. F.B.3252-35.
- 30 P.I. NO. 8 - SET LARGE BOAT SPIKE, WASHER AND TIN BY PROPORTION BETWEEN SAN MARTINEZ ROAD ON THE SOUTH AND THE NORTH BOUNDARY OF TRACT NO. 5317 PER SAID TRACT. F.B.3252-35.
- 31 SET BOAT SPIKE, WASHER AND TIN BY PROPORTION BETWEEN LEXINGTON DR. ON THE NORTH AND P.I. NO. 8 TO THE SOUTH PER TRACT NO. 108-1-5. F.B.3252-83.
- 32 P.I. NO. 1 - SET SPIKE, WASHER AND TIN BY PROPORTION BETWEEN VAL VERDE RD. ON THE EAST AND EUCLID AVE. ON THE WEST PER TRACT NO.5317, M.B.108-1-5. F.B.3252-84.
- 33 P.I. NO. 2 - SET SPIKE, WASHER AND TIN BY PROPORTION BETWEEN VAL VERDE RD. ON THE EAST AND TRELIS RD. ON THE WEST PER TRACT NO.5317, M.B.108-1-5. F.B.3252-85.
- 34 SET LARGE BOAT SPIKE, WASHER AND TIN BY PROPORTION BETWEEN P.I. NO.2 ON THE EAST AND EUCLID AVE. ON THE WEST PER TRACT NO. 5317. F.B.3252-86.
- 35 SET LARGE BOAT SPIKE, WASHER AND TIN. F.B.3252-86.
- 36 SET 2" IRON PIPE, CONC. PLUG AND BRASS TAG MARKED "L.A.C.O. ENGR." 8" BELOW SURFACE BY PROPORTION BETWEEN VAL VERDE RD. ON THE EAST AND TRELIS RD. ON THE SOUTH PER TRACT NO. 5317, M.B.108-1-5. F.B.3252-89.
- 37 SET 1" IRON PIPE, CONC. PLUG AND BRASS TAG MARKED "L.A.C.O. ENGR." 8" BELOW SURFACE BY PROPORTION BETWEEN VAL VERDE RD. ON THE EAST AND TRELIS RD. ON THE SOUTH PER TRACT NO. 5317, M.B.108-1-5. F.B.3252-89,215.
- 38 P.I. NO. 2 - SET 1" IRON PIPE, CONC. PLUG AND BRASS TAG MARKED "L.A.C.O. ENGR." BY PROPORTION BETWEEN VAL VERDE RD. ON THE EAST AND TRELIS RD. ON THE SOUTH PER TRACT NO. 5317, M.B.108-1-5. F.B.3252-87.
- 39 SET BOAT SPIKE, WASHER AND TIN BY PROPORTION BETWEEN P.I. NO. 7 TO THE NORTH AND P.I. NO. 8 TO THE SOUTH PER TRACT NO.5317. F.B.3252-42.
- 40 P.I. NO. 7 SET LARGE BOAT SPIKE WASHER & TIN BY PROPORTION BETWEEN SAN MARTINEZ ROAD TO THE SOUTH AND NLY BOUNDARY OF TRACT NO.5317 TO THE NORTH PER SAID TRACT. F.B.3166-27.
- 41 SET LARGE BOAT SPIKE, WASHER AND TIN BY PROPORTION BETWEEN P.I. NO. 6 ON THE NORTH AND P.I. NO. 7 ON THE SOUTH PER TRACT NO. 5317, M.B.108-1-5. F.B.3166-26,44.
- 42 SET LARGE BOAT SPIKE, WASHER AND TIN BY PROPORTION BETWEEN P.I. NO. 4 ON THE WEST AND VAL VERDE RD. ON THE EAST PER TRACT NO. 5317, M.B.108-1-5. F.B.3166-43.
- 43 P.I. NO. 4 - SET 1" IRON PIPE, CONC. PLUG AND BRASS TAG MARKED "L.A.C.O. ENGR." BY PROPORTION BETWEEN SAN MARTINEZ RD. ON THE SOUTH AND POCAHONTAS DR. ON THE NORTH PER TRACT NO.5317, M.B.108-1-5. F.B.3252-32.
- 44 SET 2" IRON PIPE, CONC. PLUG AND BRASS TAG MARKED "L.A.C.O. ENGR." BY INTERSECTION. F.B.3252-39.
- 45 SET LARGE BOAT SPIKE, WASHER AND TIN BY PROPORTION BETWEEN SHERIDAN ROAD ON THE WEST AND MORNINGSIDE DR. ON THE EAST PER TRACT NO. 5317. F.B.3252-41.



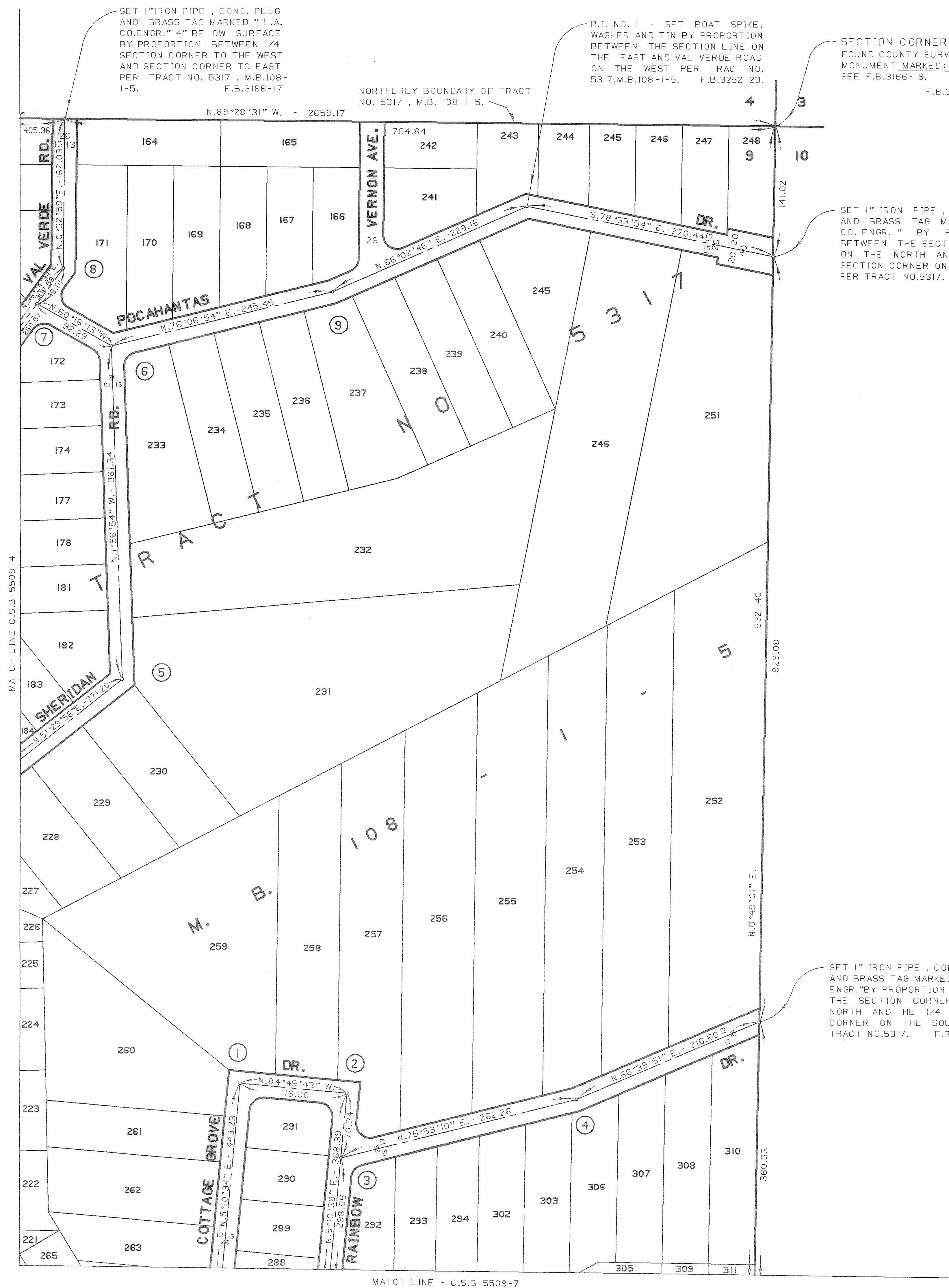
COUNTY OF LOS ANGELES  
DEPARTMENT OF  
PUBLIC WORKS  
T. A. TIDEMANSON - COUNTY ENGINEER  
PREPARED BY  
MAPPING AND PROPERTY MANAGEMENT  
DIVISION  
AND  
SURVEY DIVISION  
SURVEYED BY L.V. SMITH, R.C. DALE  
CHECKED BY R.D. HILARIO  
DRAWN BY G.D. BAILEY

MAP OF  
A PORTION OF  
WATERWORKS DISTRICT 36  
( VAL VERDE AREA )  
BASIS OF BEARINGS  
THE SOUTH LINE OF THE NORTH 1/2 OF  
SECTION 8 T.4 N., R.17 W. (N.89°35'57"W.)  
AS SHOWN ON C.S.B-5088.

COUNTY SURVEYOR'S MAP NO  
**B-5509**  
SHEET 5 OF 10 SHEETS  
FILED: 22 1982  
ASST. COUNTY DIRECTOR  
JANUARY, 1964 - JULY, 1971  
REFERENCE  
F.B.3166, F.B.3252 AND F.B.3448  
JOB NUMBER 0208.11 INDEX MAP NO 264-077



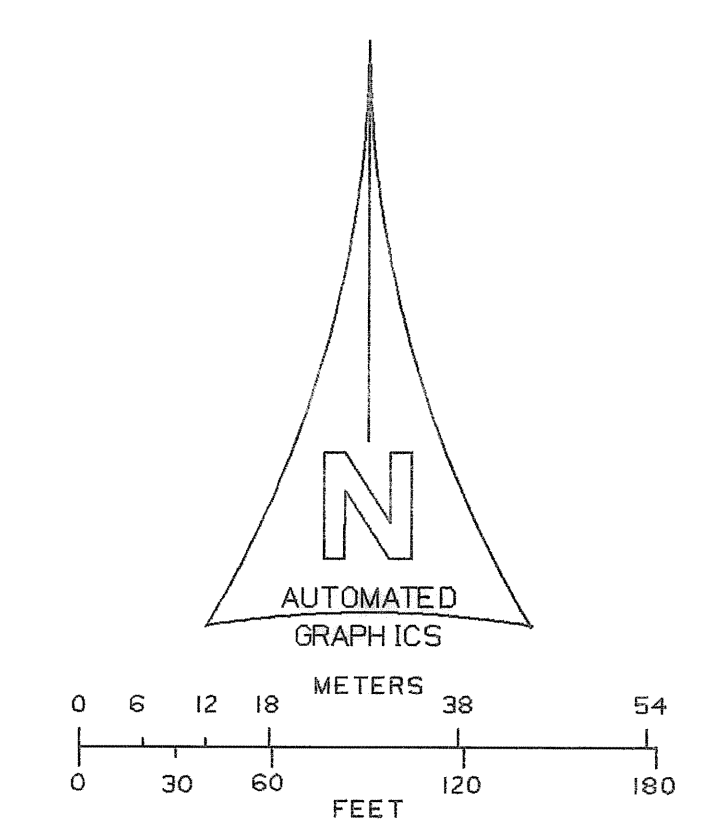
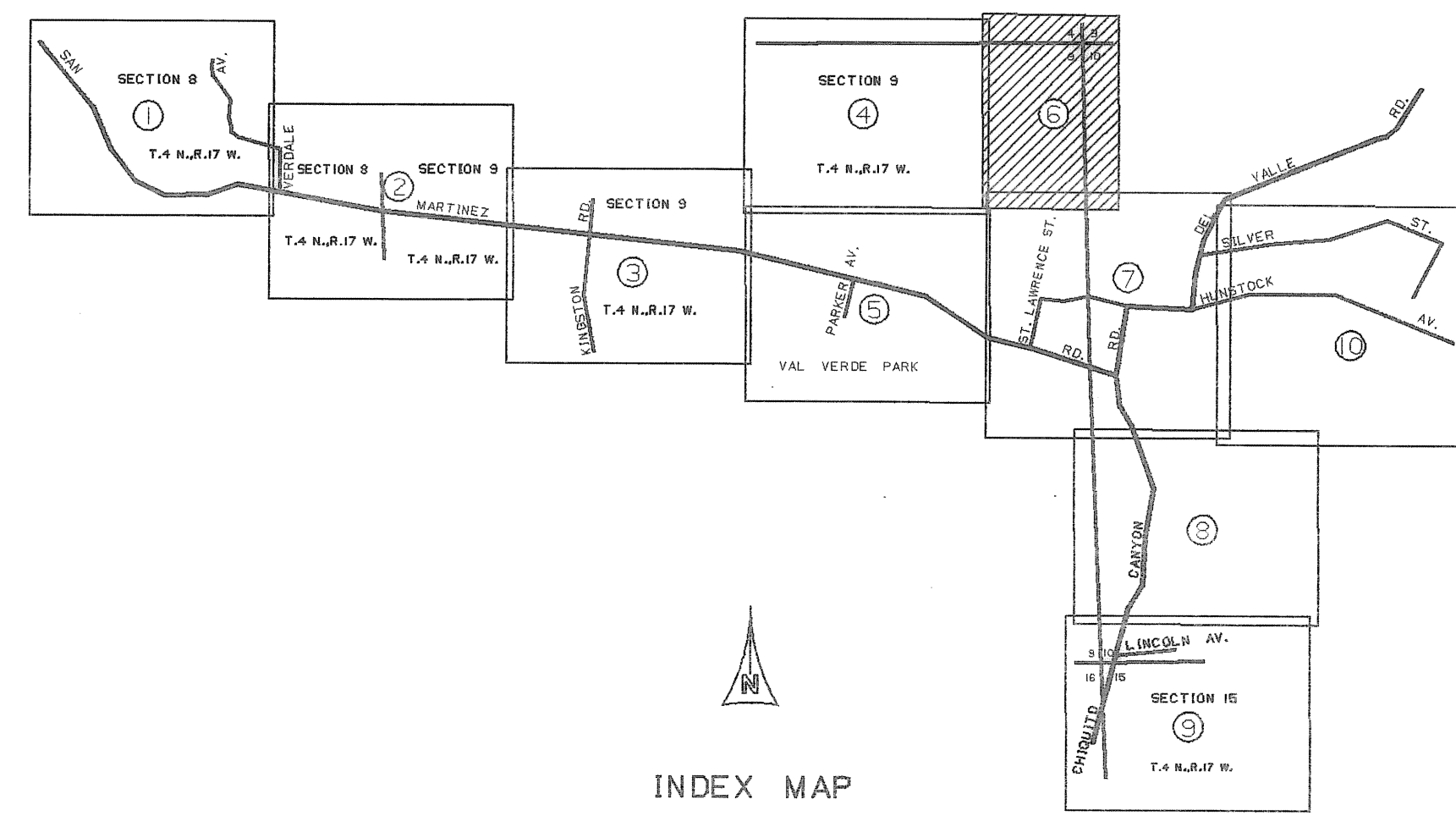
- 1 P.I. NO. 1 - SET 1" IRON PIPE, CONC. PLUG AND BRASS TAG MARKED "L.A. CO. ENGR." BY PROPORTION BETWEEN LEXINGTON DRIVE ON THE SOUTH AND RAINBOW DRIVE ON THE EAST PER TRACT NO. 5317, M.B. 108-1-5. F.B.3252-47
- 2 SET 1" IRON PIPE, CONC. PLUG AND TAG MARKED "L.A. CO. ENGR." ON LINE PRODUCED AT RECORD DISTANCE (70.34') FROM P.I. NO. 2 TO THE SOUTH PER TRACT NO. 5317, M.B. 108-1-5. F.B.3252-46.
- 3 P.I. NO. 2 - SET BOAT SPIKE, WASHER AND TIN BY PROPORTION BETWEEN THE SECTION LINE ON THE EAST AND LEXINGTON DRIVE ON THE SOUTH PER TRACT NO. 5317, M.B. 108-1-5. F.B.3252-44.
- 4 P.I. NO. 1 - SET BOAT SPIKE, WASHER AND TIN BY PROPORTION BETWEEN THE SECTION LINE ON THE EAST AND LEXINGTON DRIVE ON THE SOUTH PER TRACT NO. 5317, M.B. 108-1-5. F.B.3252-43
- 5 P.I. NO. 1 - SET 1" IRON PIPE, CONC. PLUG AND BRASS TAG MARKED "L.A. CO. ENGR." BY PROPORTION BETWEEN SAN MARTINEZ ROAD ON THE SOUTH AND POCAHONTAS DR. ON THE NORTH PER TRACT NO. 5317, M.B. 108-1-5. F.B.3252-28
- 6 P.I. NO. 3 - SET 1" IRON PIPE, CONC. PLUG AND BRASS TAG MARKED "L.A. CO. ENGR." BY PROPORTION BETWEEN THE SECTION LINE ON THE EAST AND VAL VERDE DRIVE ON THE WEST PER TRACT NO. 5317, M.B. 108-1-5. F.B.3252-27
- 7 SET BOAT SPIKE, WASHER AND TIN BY PROPORTION BETWEEN P.I. NO. 1 TO THE NORTH AND P.I. NO. 2 TO THE SOUTH PER TRACT NO. 5317, M.B. 108-1-5. F.B.3252-26.
- 8 P.I. NO. 1 - SET CONC. NAIL AND TIN BY PROPORTION BETWEEN THE SECTION LINE ON THE NORTH AND SAN MARTINEZ ROAD ON THE SOUTH PER TRACT NO. 5317, M.B. 108-1-5. F.B.3252-20
- 9 P.I. NO. 2 - SET 1" IRON PIPE, CONC. PLUG AND BRASS TAG MARKED "L.A. CO. ENGR." BY PROPORTION BETWEEN THE SECTION LINE ON THE EAST AND VAL VERDE DRIVE ON THE WEST PER TRACT NO. 5317, M.B. 108-1-5. F.B.3252-24



SECTION CORNER  
FOUND COUNTY SURVEYOR'S  
MONUMENT MARKED.  
SEE F.B.3166-19.  
F.B.3452-22

SET 1" IRON PIPE, CONC. PLUG  
AND BRASS TAG MARKED "L.A.  
CO. ENGR." BY PROPORTION  
BETWEEN THE SECTION CORNER  
ON THE NORTH AND THE 1/4  
SECTION CORNER ON THE SOUTH  
PER TRACT NO. 5317.  
F.B.3252-21

SET 1" IRON PIPE, CONC. PLUG  
AND BRASS TAG MARKED "L.A. CO.  
ENGR." BY PROPORTION BETWEEN  
THE SECTION CORNER ON THE  
NORTH AND THE 1/4 SECTION  
CORNER ON THE SOUTH PER  
TRACT NO. 5317. F.B.3252-19.

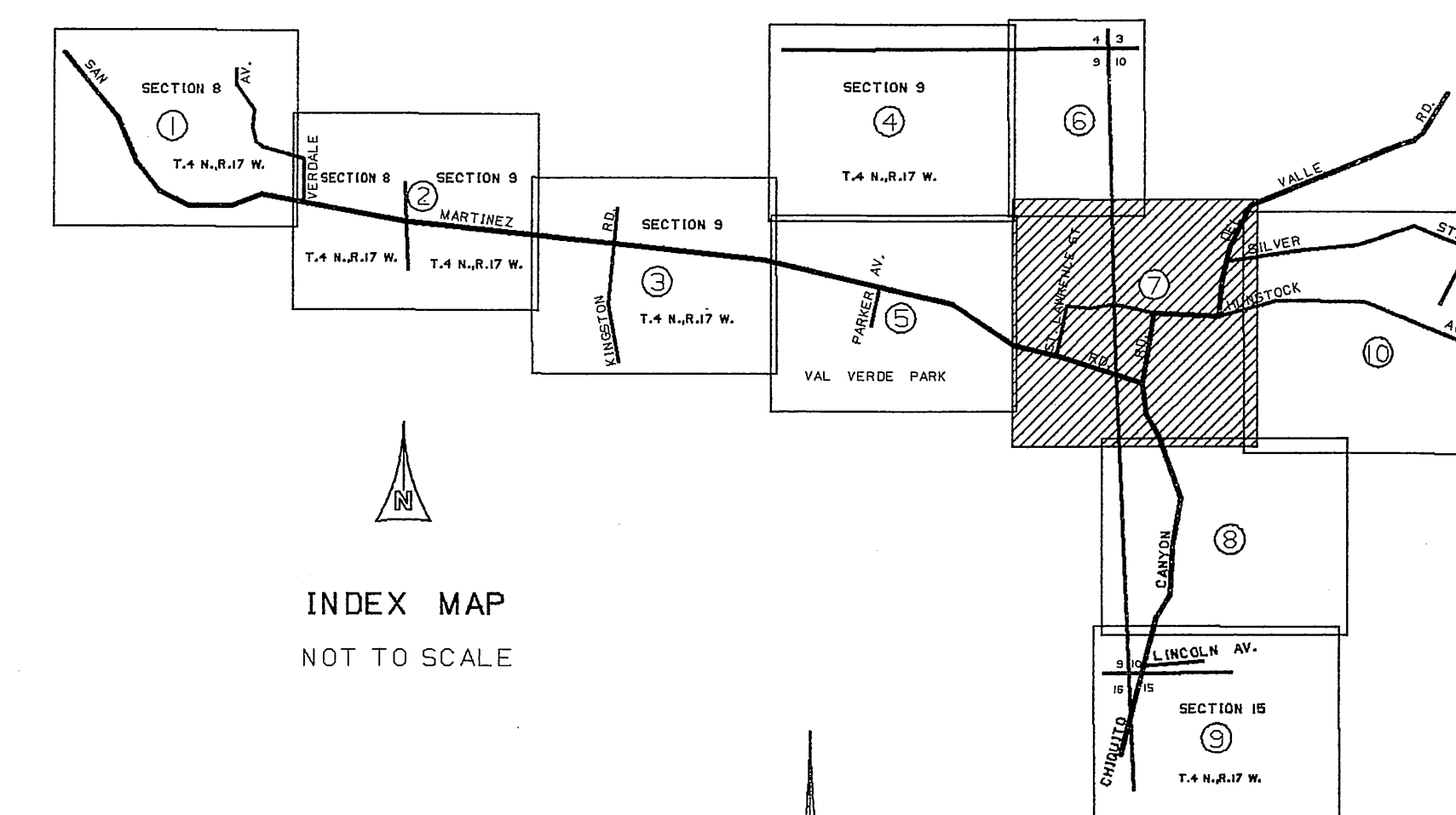


COUNTY OF LOS ANGELES DEPARTMENT OF PUBLIC WORKS T. A. TIDEMANSON - COUNTY ENGINEER PREPARED BY MAPPING AND PROPERTY MANAGEMENT DIVISION AND SURVEY DIVISION SURVEYED BY J. V. SMITH - B. G. DALE CHECKED BY J. G. HILARIO DRAWN BY G. D. BAILEY	MAP OF		COUNTY SURVEYOR'S MAP NO
	A PORTION OF		B-5509
	WATERWORKS DISTRICT 36		SHEET 6 OF 10 SHEETS
	( VAL VERDE AREA )		FILED: 2/3 1982
	BASIS OF BEARINGS		ASST. DEPUTY DIRECTOR
THE SOUTH LINE OF THE NORTH 1/2 OF		SURVEYED	
SECTION 8 T. 4 N., R. 17 W. (N. 89° 35' 57" W.)		JANUARY, 1964-JULY, 1971	
AS SHOWN ON C.S.B-5088.		REFERENCE	
		F.B.3166, F.B.3252 AND F.B.3448	
		JOB NUMBER	
		0208.11	
		INDEX MAP NO	
		264-077	





- 1 SET BOAT SPIKE, WASHER AND TIN BY PROPORTION BETWEEN LEXINGTON DR. ON THE NORTH AND THE P.I. TO THE SOUTH PER TRACT NO. 5317. F.B.3252-56,57
- 2 ANGLE POINT NO. 2 - SET BOAT SPIKE, WASHER AND TIN BY PROPORTION BETWEEN THE SECTION LINE ON THE EAST AND VAL VERDE RD. ON THE WEST PER TRACT NO. 5317. F.B.3252-40,52.
- 3 SET BOAT SPIKE, WASHER AND TIN BY PROPORTION BETWEEN ANGLE POINT NO. 1 ON THE EAST AND ANGLE POINT NO.2 ON THE WEST PER TRACT NO. 5317. F.B.3252-38,39
- 4 P.I. NO. 2 - SET BOAT SPIKE, WASHER AND TIN BY PROPORTION BETWEEN LEXINGTON DR. ON THE SOUTH AND RAINBOW DR. ON THE NORTH PER TRACT NO. 5317. F.B.3252-48.
- 5 P.I. NO. 3 - SET BOAT SPIKE, WASHER AND TIN BY PROPORTION BETWEEN LEXINGTON DR. ON THE SOUTH AND THE SECTION LINE TO THE EAST PER TRACT NO. 5317, M.B.108-1-5. F.B.3252-45.
- 6 FOUND NAIL AND TIN. NO REF. F.B.3252-37
- 7 ANGLE POINT NO. 1 - SET 1" IRON PIPE, CONC. PLUG AND BRASS TAG MARKED "L.A. CO. ENGR." BY PROPORTION BETWEEN THE SECTION LINE ON THE EAST AND VAL VERDE RD. ON THE WEST PER TRACT NO. 5317, M.B.108-1-5. F.B.3252-37.
- 8 P.I. SET 2" IRON PIPE, CONC. PLUG AND BRASS TAG MARKED "L.A. CO. ENGR." BY PROPORTION BETWEEN THE SECTION LINE ON THE EAST AND MORNINGSIDE DR. ON THE WEST PER TRACT NO. 5317. F.B.3252-60
- 9 SET SPIKE, WASHER AND TIN. F.B.3252-60.
- 10 P.I. NO. 2 - SET BOAT SPIKE, WASHER AND TIN BY PROPORTION BETWEEN HUNSTOCK ST. ON THE SOUTH AND THE SECTION LINE ON THE EAST PER TRACT NO. 5317. F.B.3252-69
- 11 P.I. NO. 1 - SET 2" IRON PIPE, CONC. PLUG AND BRASS TAG MARKED "L.A. CO. ENGR." BY PROPORTION BETWEEN HUNSTOCK ST. ON THE SOUTH AND THE SECTION LINE ON THE EAST PER TRACT NO. 5317. F.B.3252-68.
- 12 P.I. NO. 1 - SET 2" IRON PIPE, CONC. PLUG AND BRASS TAG MARKED "L.A. CO. ENGR." BY PROPORTION BETWEEN THE SECTION LINE ON THE WEST AND THE SECTION LINE ON THE EAST PER TRACT NO. 5317. F.B.3252-68.
- 13 P.I. NO. 2 - SET BOAT SPIKE, WASHER AND TIN BY PROPORTION BETWEEN THE SECTION LINE ON THE EAST AND MORNINGSIDE DR. TO THE WEST PER TRACT NO. 5317. F.B.3252-62
- 14 SET BOAT SPIKE, WASHER AND TIN BY PROPORTION BETWEEN ST. LAWRENCE ST. ON THE WEST AND P.I. NO. 2 ON THE EAST PER TRACT NO. 5317. F.B.3252-63
- 15 P.I. NO. 3 - SET BOAT SPIKE, WASHER AND TIN BY PROPORTION BETWEEN THE SECTION LINE ON THE EAST AND MORNINGSIDE DR. TO THE WEST PER TRACT NO. 5317. F.B.3252-64.
- 16 SET BOAT SPIKE, WASHER AND TIN BY PROPORTION BETWEEN SAN MARTINEZ RD. ON THE SOUTH AND HUNSTOCK ST. ON THE NORTH PER TRACT NO. 5317. F.B.3252-66.
- 17 P.I. - SET BOAT SPIKE, WASHER AND TIN BY PROPORTION BETWEEN SAN MARTINEZ RD. ON THE SOUTH AND HUNSTOCK ST. ON THE NORTH PER TRACT NO. 5317. F.B.3252-70.
- 18 P.I. - SET BOAT SPIKE, WASHER AND TIN BY PROPORTION BETWEEN SAN MARTINEZ RD. ON THE SOUTH AND HUNSTOCK ST. ON THE NORTH PER TRACT NO. 5317. F.B.3252-70.
- 19 SET BOAT SPIKE, WASHER AND TIN BY PROPORTION BETWEEN HUNSTOCK ST. ON THE NORTH AND THE P.I. TO THE SOUTH PER TRACT NO. 5317. F.B.3252-71.
- 20 P.I. - SET 2" IRON PIPE, CONC. PLUG AND BRASS TAG MARKED "L.A. CO. ENGR." BY PROPORTION BETWEEN THE SECTION LINE ON THE EAST AND ST. LAWRENCE ST. ON THE WEST PER TRACT NO. 5317. F.B.3252-73.
- 21 SET 2" IRON PIPE, CONC. PLUG AND BRASS TAG MARKED "L.A. CO. ENGR." 8" BELOW SURFACE BY PROPORTION BETWEEN 1/4 SECTION CORNER SOUTH AND THE SECTION CORNER TO THE NORTH PER TRACT NO. 5317. SEE F.B.3448-82 F.B.3252-14,107
- 22 SET 2" IRON PIPE, CONC. PLUG AND BRASS TAG MARKED "L.A. CO. ENGR." 6" BELOW SURFACE. F.B.3448-82.
- 23 P.I. NO. 19 - FOUND 3/4 DRILL STEEL AND TACK IN HANDHOLE. SEE F.B.3166-127 F.B.3448-77
- 24 SET 2" IRON PIPE, CONC. PLUG AND BRASS TAG MARKED "L.A. CO. ENGR." 10" BELOW SURFACE BY PROPORTION BETWEEN HUNSTOCK ST. TO THE NORTH AND SAN MARTINEZ RD. TO THE SOUTH PER TRACT NO. 8672, M.B. 104-5-6. F.B.3448-79.
- 25 FOUND COUNTY SURVEYOR MONUMENT MARKED: 8" BELOW SURFACE IN HANDHOLE. SEE F.B.3166-128. F.B.3448-79.
- 26 FOUND 2" IRON PIPE, CONC. PLUG AND CARTRIDGE 15" BELOW SURFACE. SEE F.B.327-159. F.B.3166-135.
- 27 FOUND 2" IRON PIPE, CONC. PLUG AND BRASS TAG MARKED "L.A. CO. ENGR." IN HANDHOLE. SEE F.B.3166-136. F.B.3448-64
- 28 SET PUNCH MARK ON 1-1/2" WATER PIPE 1" BELOW SURFACE AT RECORD DISTANCE (399.48') FROM THE WEST PER TRACT NO. 8672, M.B. 104-5-6. F.B.3448-65.
- 29 SET 2" IRON PIPE, CONC. PLUG AND BRASS TAG MARKED "L.A. CO. ENGR." 10" BELOW SURFACE BY PROPORTION BETWEEN LINCOLN AVE. TO THE WEST AND HUNSTOCK ST. TO THE EAST PER TRACT NO. 8672, M.B.104-5-6. F.B.3448-61
- 30 FOUND 2" IRON PIPE, CONC. PLUG AND BRASS TAG MARKED "L.A. CO. ENGR." IN HANDHOLE. SEE F.B.3166-137. F.B.3448-62.
- 31 ANGLE POINT - SET 2" IRON PIPE, CONC. PLUG AND BRASS TAG MARKED "L.A. CO. ENGR." 6" BELOW SURFACE AT RECORD DISTANCE (20.00') FROM THE EAST PER TRACT NO. 8672, M.B.104-5-6. F.B.3448-80
- 32 SET SQUARE HEAD SPIKE AND TIN IN PAVEMENT AT RECORD DISTANCE (349.00') FROM COUNTY SURVEYOR MONUMENT, ON THE N'LY PROD. BETWEEN FOUND MONUMENTS AT CENTRAL AVE. AND SAN MARTINEZ ROAD PER TRACT NO. 8672, M.B. 104-5-6. F.B.3448-129.
- 33 SET 2" IRON PIPE, CONC. PLUG AND BRASS TAG MARKED "L.A. CO. ENGR." IN HANDHOLE BY PROPORTION BETWEEN THE ANGLE POINT TO THE EAST AND CHIQUITO CANYON ROAD TO THE WEST PER TRACT NO.8673. F.B.3166-130.
- 34 ANGLE POINT - SET 2" IRON PIPE, CONC. PLUG AND BRASS TAG MARKED "L.A. CO. ENGR." 12" BELOW SURFACE BY PROPORTION. (SEE PROPORTION NOTE "A") SEE F.B.3166-131. F.B.3448-46
- 35 SET 2" IRON PIPE, CONC. PLUG AND BRASS TAG MARKED "L.A. CO. ENGR." 3" BELOW SURFACE AT RECORD DISTANCE (16.21') FROM THE NORTH PER TRACT NO. 8673, M.B. 104-25-26. F.B.3448-46
- 36 SET 2" IRON PIPE, CONC. PLUG AND BRASS TAG MARKED "L.A. CO. ENGR." 10" BELOW SURFACE BY PROPORTION (SEE PROPORTION NOTE "A") BELOW. F.B.3166-133. F.B.3448-28. F.B.3252-66.



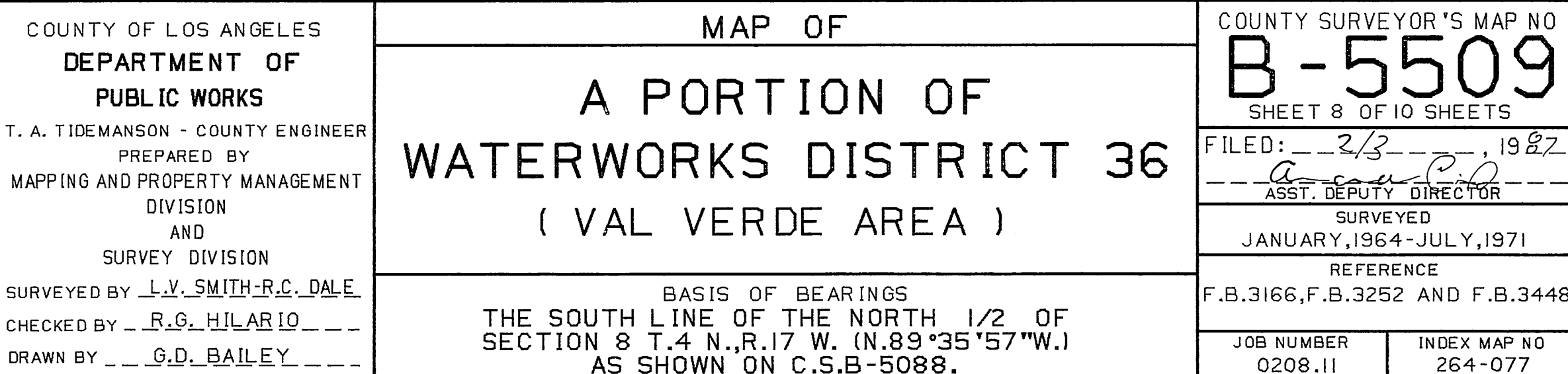
COUNTY OF LOS ANGELES  
DEPARTMENT OF  
PUBLIC WORKS  
T. A. TIDEMANSON - COUNTY ENGINEER  
PREPARED BY  
MAPPING AND PROPERTY MANAGEMENT  
DIVISION  
AND  
SURVEY DIVISION  
SURVEYED BY J.V. SMITH & G. DALE  
CHECKED BY J.B. HILARIO  
DRAWN BY G.D. BAILEY

MAP OF  
A PORTION OF  
WATERWORKS DISTRICT 36  
(VAL VERDE AREA)

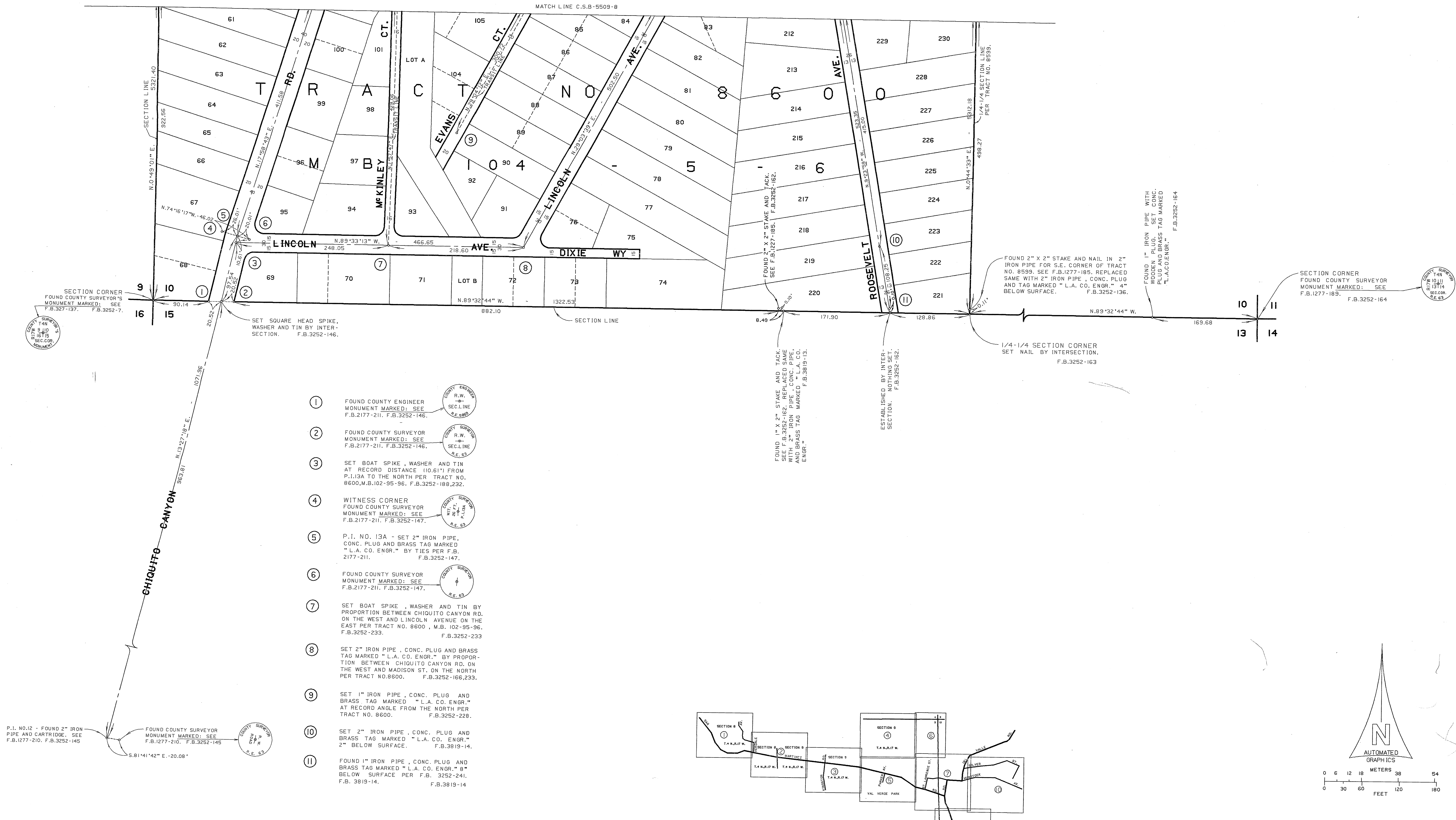
BASIS OF BEARINGS  
THE SOUTH LINE OF THE NORTH 1/2 OF  
SECTION 8 T.4 N. R.17 W. (N.89°35'57" W.)  
AS SHOWN ON C.S.B-5088.

COUNTY SURVEYOR'S MAP NO  
B-5509  
SHEET 7 OF 10 SHEETS  
FILED: 2/3/1982  
ASS. COUNTY ENGINEER  
SURVEYED  
JANUARY, 1964-JULY, 1971  
REFERENCE  
F.B.3166, F.B.3252 AND F.B.3448  
JOB NUMBER 0208.11 INDEX MAP NO 264-077









SECTION CORNER  
FOUND COUNTY SURVEYOR'S  
MONUMENT MARKED: SEE  
F.B.3252-137, F.B.3252-7.

SET SQUARE HEAD SPIKE,  
WASHER AND TIN BY INTER-  
SECTION. F.B.3252-146.

FOUND 2" X 2" STAKE AND TACK.  
SEE F.B.1277-185, F.B.3252-162.  
AND BRASS TAG MARKED "L.A. CO.  
ENGR." F.B.3819-13.

ESTABLISHED BY INTER-  
SECTION. NOTHING SET.  
F.B.3252-162.

FOUND 2" X 2" STAKE AND NAIL IN 2"  
IRON PIPE FOR S.E. CORNER OF TRACT  
NO. 8599. SEE F.B.1277-185. REPLACED  
SAME WITH 2" IRON PIPE, CONC. PLUG  
AND TAG MARKED "L.A. CO. ENGR." 4"  
BELOW SURFACE. F.B.3252-136.

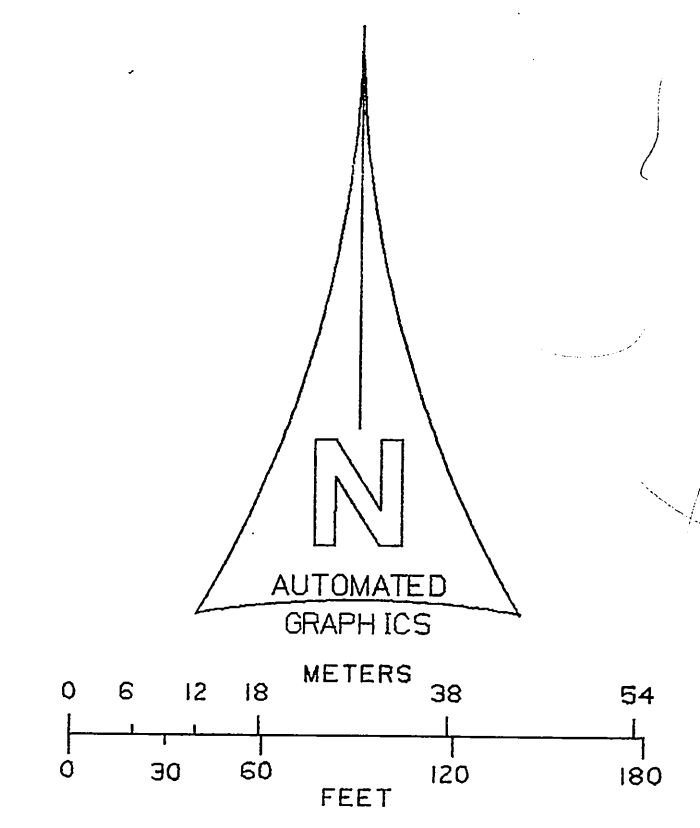
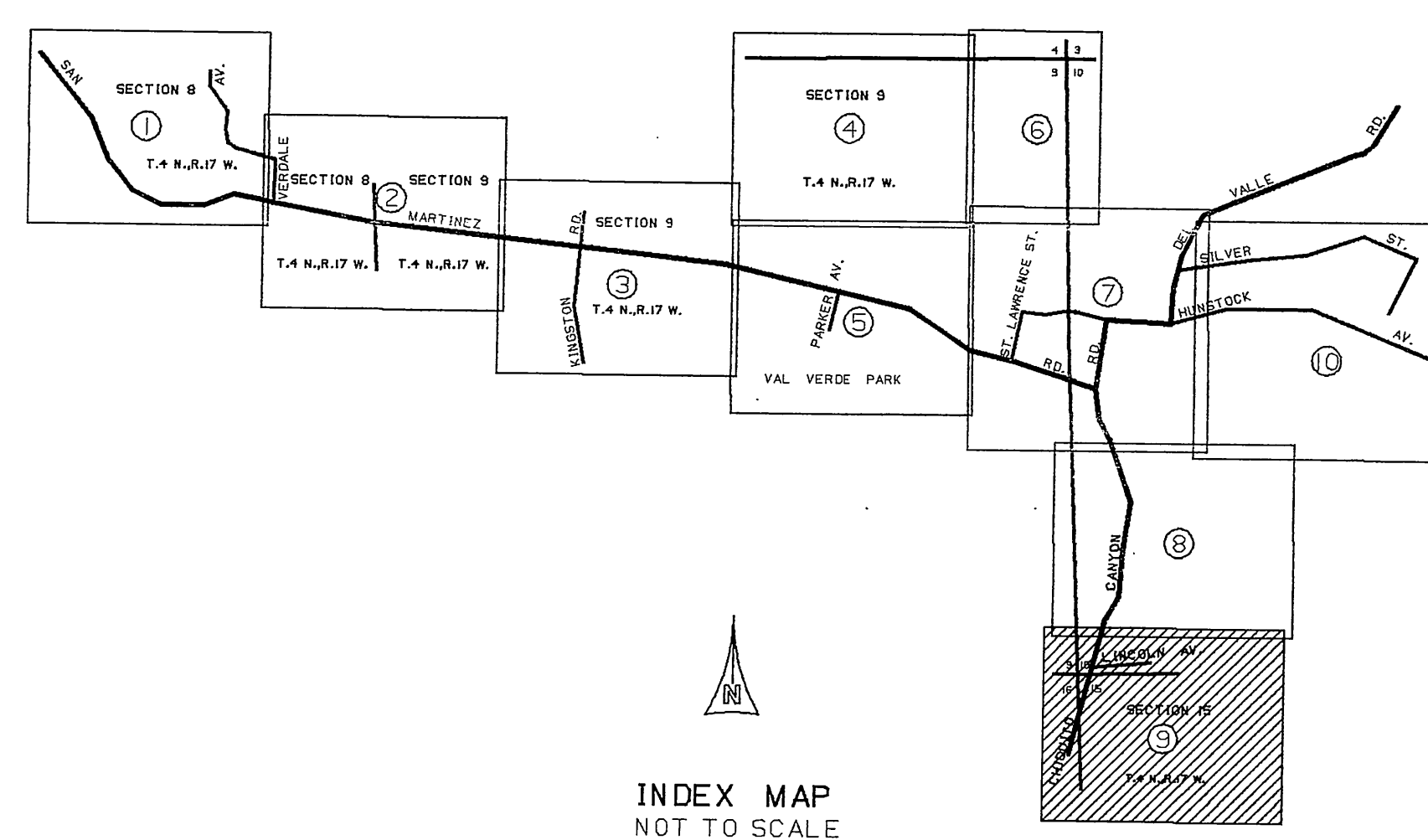
FOUND 1" IRON PIPE WITH  
WOODEN PLUG. SET CONC.  
PLUG AND BRASS TAG MARKED  
"L.A. CO. ENGR." F.B.3252-164

SECTION CORNER  
FOUND COUNTY SURVEYOR  
MONUMENT MARKED: SEE  
F.B.1277-185, F.B.3252-164

- ① FOUND COUNTY ENGINEER  
MONUMENT MARKED: SEE  
F.B.2177-211, F.B.3252-146.
- ② FOUND COUNTY SURVEYOR  
MONUMENT MARKED: SEE  
F.B.2177-211, F.B.3252-146.
- ③ SET BOAT SPIKE, WASHER AND TIN  
AT RECORD DISTANCE (10.61') FROM  
P.I.13A TO THE NORTH PER TRACT NO.  
8600, M.B.102-95-96, F.B.3252-188,232.
- ④ WITNESS CORNER  
FOUND COUNTY SURVEYOR  
MONUMENT MARKED: SEE  
F.B.2177-211, F.B.3252-147.
- ⑤ P.I. NO. 13A - SET 2" IRON PIPE,  
CONC. PLUG AND BRASS TAG MARKED  
"L.A. CO. ENGR." BY TIES PER F.B.  
2177-211. F.B.3252-147.
- ⑥ FOUND COUNTY SURVEYOR  
MONUMENT MARKED: SEE  
F.B.2177-211, F.B.3252-147.
- ⑦ SET BOAT SPIKE, WASHER AND TIN BY  
PROPORTION BETWEEN CHIQUITO CANYON RD.  
ON THE WEST AND LINCOLN AVENUE ON THE  
EAST PER TRACT NO. 8600, M.B. 102-95-96,  
F.B.3252-233. F.B.3252-233
- ⑧ SET 2" IRON PIPE, CONC. PLUG AND BRASS  
TAG MARKED "L.A. CO. ENGR." BY PROPOR-  
TION BETWEEN CHIQUITO CANYON RD. ON  
THE WEST AND MADISON ST. ON THE NORTH  
PER TRACT NO.8600. F.B.3252-166,233.
- ⑨ SET 1" IRON PIPE, CONC. PLUG AND  
BRASS TAG MARKED "L.A. CO. ENGR."  
AT RECORD ANGLE FROM THE NORTH PER  
TRACT NO. 8600. F.B.3252-228.
- ⑩ SET 2" IRON PIPE, CONC. PLUG AND  
BRASS TAG MARKED "L.A. CO. ENGR." 8"  
2" BELOW SURFACE. F.B.3819-14.
- ⑪ FOUND 1" IRON PIPE, CONC. PLUG AND  
BRASS TAG MARKED "L.A. CO. ENGR." 8"  
BELOW SURFACE PER F.B. 3252-241,  
F.B. 3819-14. F.B.3819-14

P.I. NO.12 - FOUND 2" IRON  
PIPE AND CARTRIDGE. SEE  
F.B.1277-210, F.B.3252-145

FOUND COUNTY SURVEYOR  
MONUMENT MARKED: SEE  
F.B.1277-210, F.B.3252-145



COUNTY OF LOS ANGELES DEPARTMENT OF PUBLIC WORKS T. A. TIDEMANSON - COUNTY ENGINEER PREPARED BY MAPPING AND PROPERTY MANAGEMENT DIVISION AND SURVEY DIVISION SURVEYED BY J.V. SMITH-R.C. DALE CHECKED BY R.S. HILARIO DRAWN BY G.D. BAILEY	MAP OF A PORTION OF WATERWORKS DISTRICT 36 ( VAL VERDE AREA )		COUNTY SURVEYOR'S MAP NO <b>B-55509</b> SHEET 9 OF 10 SHEETS FILED: 2/3 1982 ASST. COUNTY DIRECTOR SURVEYED JANUARY, 1964-JULY, 1971 REFERENCE F.B.3166, F.B.3252 AND F.B.3448
	BASIS OF BEARINGS THE SOUTH LINE OF THE NORTH 1/2 OF SECTION 8 T.4 N., R.17 W. (N.89°35'57"W.) AS SHOWN ON C.S.B-5088.		JOB NUMBER 0208.11
			INDEX MAP NO 264-077



