

FOUND 2" IRON PIPE, WOOD PLUG & NAIL 3" BELOW SURFACE. SEE TRACT NO. 5784, M.B. 100-18-20. F.B.3145-109

FOUND 2" IRON PIPE, WOOD PLUG & NAIL 2" ABOVE SURFACE. SEE TRACT NO. 5784, M.B. 100-18-20. F.B.3145-109

FOUND 2" IRON PIPE, WOOD PLUG & NAIL FLUSH WITH SURFACE. SEE TRACT NO. 5784, M.B. 100-18-20. F.B.3145-110

SET 2" IRON PIPE, CONC. PLUG & TAG MARKED: 'L.A. CO. ENGR.' FLUSH WITH SURFACE BY PRORATION BETWEEN THE 2" IRON PIPES TO THE NORTH & SOUTH PER TRACT NO. 5784, M.B. 100-18-20. F.B.3145-127

FOUND 2" IRON PIPE, WOOD PLUG & NAIL FLUSH WITH SURFACE. SEE TRACT NO. 5784, M.B. 100-18-20. F.B.3145-110

FOUND 2" IRON PIPE, WOOD PLUG & NAIL FLUSH WITH SURFACE. SEE TRACT NO. 5784, M.B. 100-18-20. F.B.3145-111

FOUND 2" IRON PIPE, WOOD PLUG & NAIL FLUSH WITH SURFACE. SEE TRACT NO. 5784, M.B. 100-18-20. F.B.3145-111

FOUND 2" IRON PIPE, WOOD PLUG & NAIL FLUSH WITH SURFACE. SEE TRACT NO. 5784, M.B. 100-18-20. F.B.3145-111

FOUND 2" IRON PIPE, WOOD PLUG & NAIL FLUSH WITH SURFACE. SEE TRACT NO. 5784, M.B. 100-18-20. F.B.3145-111

FOUND 2" IRON PIPE, WOOD PLUG & NAIL FLUSH WITH SURFACE. SEE TRACT NO. 5784, M.B. 100-18-20. F.B.3145-112

FOUND 2" IRON PIPE, WOOD PLUG & NAIL 18" BELOW SURFACE. SEE TRACT NO. 5784, M.B. 100-18-20. F.B.3145-112

SET CONC. PLUG & BRASS TAG MARKED: 'L.A. CO. ENGR.' IN CENTER OF FOUND 2" IRON PIPE, 4" ABOVE SURFACE. SEE TRACT NO. 5784, M.B. 100-18-20. F.B.3145-109

SET BOAT SPIKE, WASHER & TIN BY PRORATION BETWEEN THE INTERSECTION OF CANYONSIDE ROAD TO THE EAST & FREEMAN AVE. TO THE WEST PER TRACT NO. 5784, M.B. 100-18-20. F.B.3145-179, 194

SET BOAT SPIKE, WASHER & TIN BY PRORATION BETWEEN THE ANGLE POINTS TO THE NORTH & SOUTH PER TRACT NO. 5784, M.B. 100-18-20. F.B.3145-193

SET 2" IRON PIPE, CONC. PLUG & BRASS TAG MARKED: 'L.A. CO. ENGR.' FLUSH WITH SURFACE BY PRORATION BETWEEN THE 2" IRON PIPES TO THE NORTH & SOUTH PER TRACT NO. 5784, M.B. 100-18-20. F.B.3145-125

SET BOAT SPIKE, WASHER & TIN. F.B.3145-192

NOTHING SET. F.B.3145-192

ANGLE POINT SET 1" IRON PIPE, CONC. PLUG & BRASS TAG MARKED: 'L.A. CO. ENGR.' 6" BELOW SURFACE. F.B.3145-190, 191

FOUND 2" IRON PIPE 6" ABOVE SURFACE. SET CONC. PLUG & BRASS TAG MARKED: 'L.A. CO. ENGR.' IN CENTER OF PIPE. SEE TRACT NO. 5784, M.B. 100-18-20. F.B.3145-102

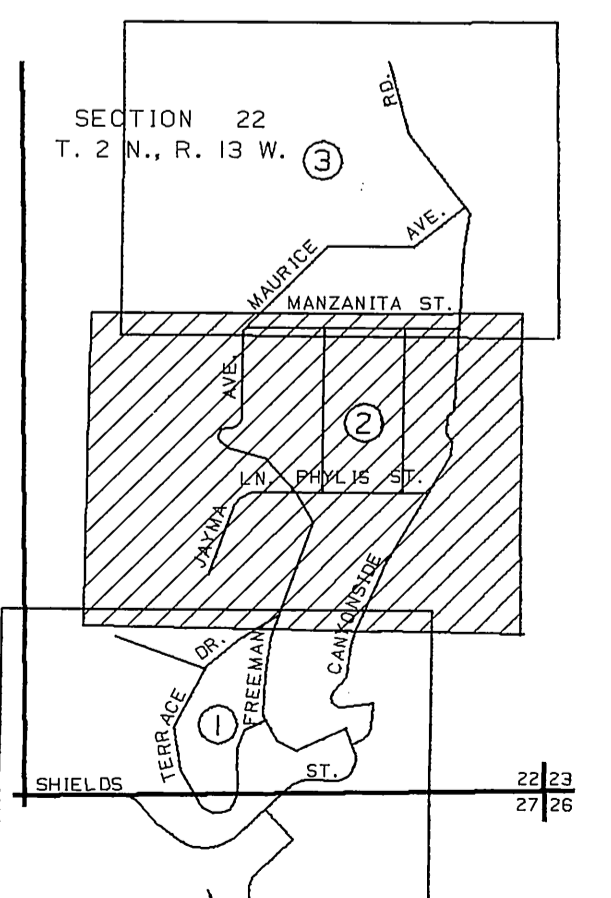
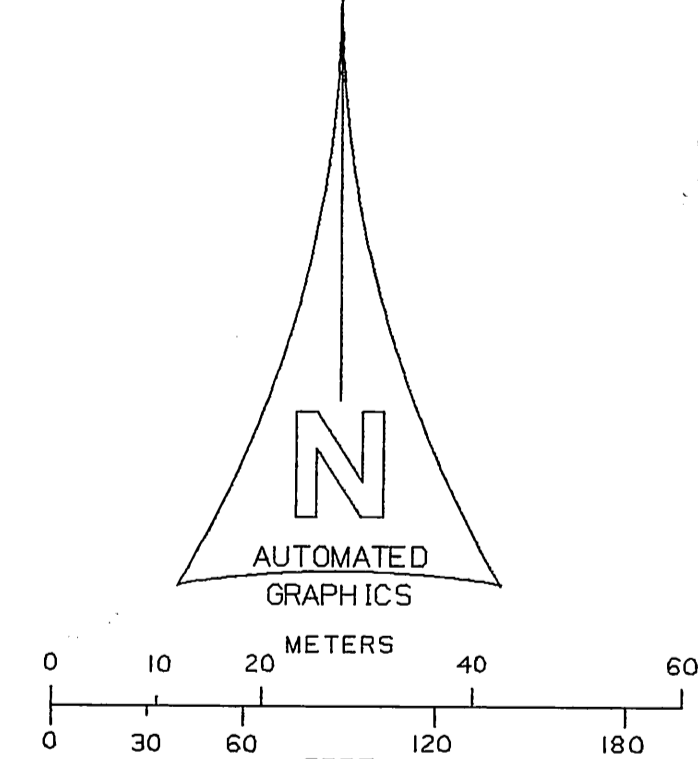
FOUND 2" IRON PIPE FLUSH WITH SURFACE. SET CONC. PLUG & BRASS TAG MARKED: 'L.A. CO. ENGR.' IN CENTER OF PIPE. SEE TRACT NO. 5784, M.B. 100-18-20. F.B.3145-102

ANGLE POINT SET 1" IRON PIPE, CONC. PLUG & BRASS TAG MARKED: 'L.A. CO. ENGR.' 6" BELOW SURFACE. F.B.3145-190, 191

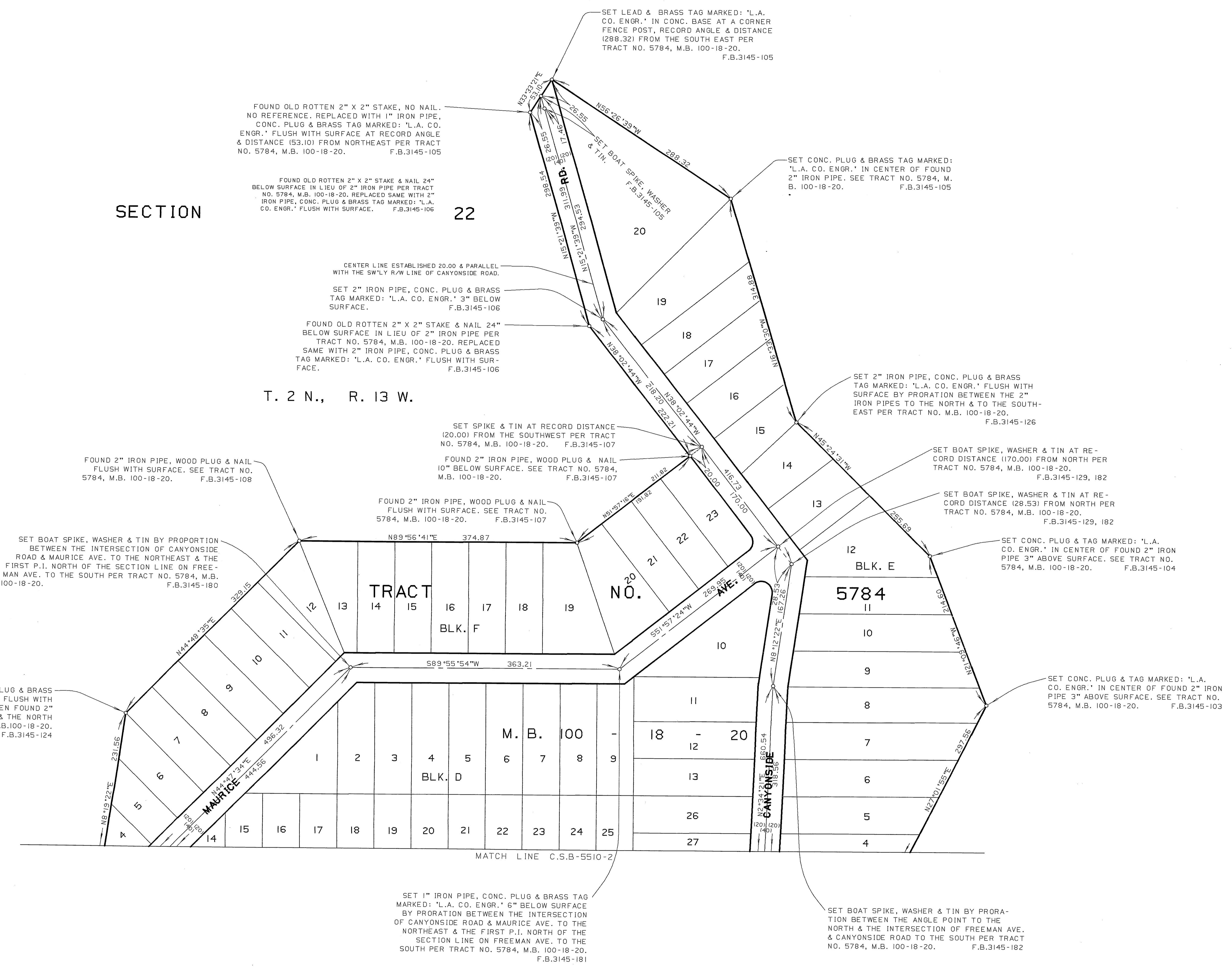
NOTE C
CANYONSIDE ROAD ESTABLISHED BY PRORATION BETWEEN THE ANGLE POINT TO THE SOUTH OF THE INTERSECTION OF MAURICE AVE. & CANYONSIDE ROAD TO THE NORTH & THE INTERSECTION OF CANYONSIDE ROAD & FREEMAN AVE. PER TRACT NO. 5784, M.B. 100-18-20.

FOUND 2" IRON PIPE, WOOD PLUG & NAIL IN TREE ROOTS FLUSH WITH SURFACE. REPLACED WOOD PLUG & NAIL WITH CONC. PLUG & BRASS TAG MARKED: 'L.A. CO. ENGR.' SEE TRACT NO. 5784, M.B. 100-18-20. F.B.3145-101

CURVE DATA
Δ = 6°53'22"
R = 719.37
T = 43.30
L = 86.50



COUNTY OF LOS ANGELES DEPARTMENT OF PUBLIC WORKS T. A. TIDEMANSON - COUNTY ENGINEER PREPARED BY MAPPING AND PROPERTY MANAGEMENT DIVISION AND SURVEY DIVISION SURVEYED BY <u>A.S. CURTIS</u> CHECKED BY <u>S. HILARIO</u> DRAWN BY <u>G. MASUDA</u>	MAP OF IRVING AVENUE, TRACT NO. 5784, M.B. 100-18-20 WATER WORKS DISTRICT NO. 36 (LA CRESCENTA AREA)		COUNTY SURVEYOR'S MAP NO. B-5510 SHEET 2 OF 3 SHEETS FILED: <u>7/22</u> , 19 <u>86</u> ASST. COUNTY ENGINEER SURVEYED JULY 1986 - JUNE 1987 REFERENCE F.B.3145
	BASIS OF BEARINGS THE EAST LINE OF THE WEST HALF OF SECTION 22, T. 2 N., R. 13 W. (N0°57'33"W.) PER TRACT NO. 5784, M.B. 100-18-20		JOB NUMBER 0208.11
			INDEX MAP NO. 189-217

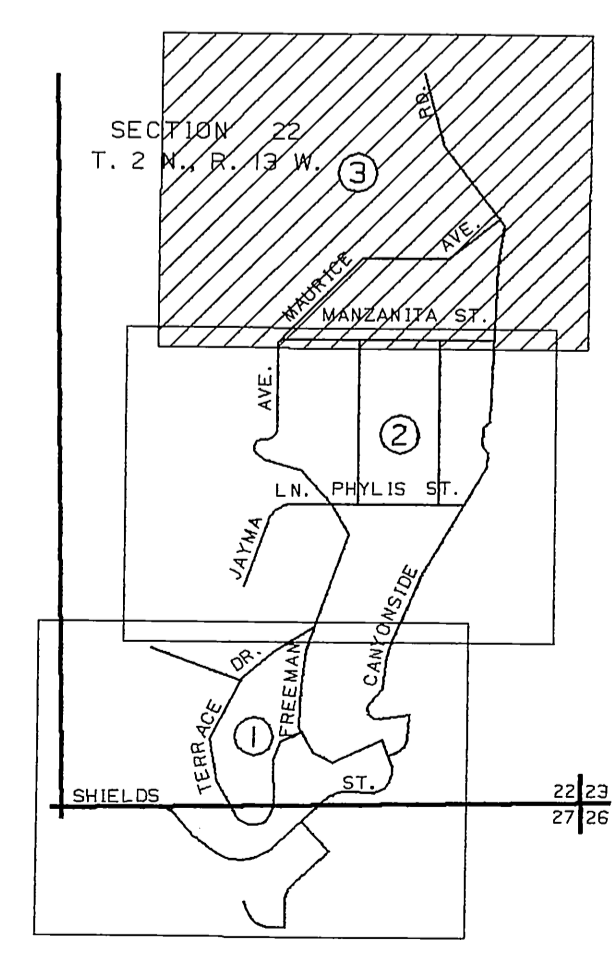
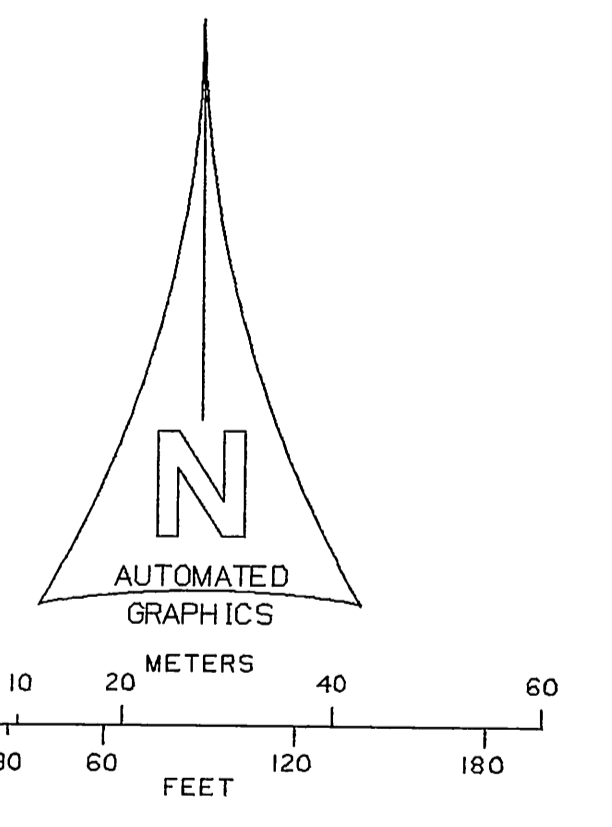


SECTION 22

T. 2 N., R. 13 W.

TRACT NO. 5784

MATCH LINE C.S.B-5510-2



INDEX MAP NOT TO SCALE

SET 2" IRON PIPE, CONC. PLUG & BRASS TAG MARKED: "L.A. CO. ENGR." FLUSH WITH SURFACE BY PRORATION BETWEEN FOUND 2" IRON PIPES TO THE SOUTHWEST & THE NORTH EAST PER TRACT NO. 5784, M.B. 100-18-20. F.B.3145-124

SET BOAT SPIKE, WASHER & TIN BY PROPORTION BETWEEN THE INTERSECTION OF CANYONSIDE ROAD & MAURICE AVE. TO THE NORTHEAST & THE FIRST P.I. NORTH OF THE SECTION LINE ON FREEMAN AVE. TO THE SOUTH PER TRACT NO. 5784, M.B. 100-18-20. F.B.3145-180

FOUND 2" IRON PIPE, WOOD PLUG & NAIL FLUSH WITH SURFACE. SEE TRACT NO. 5784, M.B. 100-18-20. F.B.3145-108

FOUND 2" IRON PIPE, WOOD PLUG & NAIL FLUSH WITH SURFACE. SEE TRACT NO. 5784, M.B. 100-18-20. F.B.3145-107

FOUND 2" IRON PIPE, WOOD PLUG & NAIL 10" BELOW SURFACE. SEE TRACT NO. 5784, M.B. 100-18-20. F.B.3145-107

FOUND OLD ROTTEN 2" X 2" STAKE, NO NAIL. NO REFERENCE. REPLACED WITH 1" IRON PIPE, CONC. PLUG & BRASS TAG MARKED: "L.A. CO. ENGR." FLUSH WITH SURFACE AT RECORD ANGLE & DISTANCE (53.10) FROM NORTHEAST PER TRACT NO. 5784, M.B. 100-18-20. F.B.3145-105

FOUND OLD ROTTEN 2" X 2" STAKE & NAIL 24" BELOW SURFACE IN LIEU OF 2" IRON PIPE PER TRACT NO. 5784, M.B. 100-18-20. REPLACED SAME WITH 2" IRON PIPE, CONC. PLUG & BRASS TAG MARKED: "L.A. CO. ENGR." FLUSH WITH SURFACE. F.B.3145-106

FOUND OLD ROTTEN 2" X 2" STAKE & NAIL 24" BELOW SURFACE IN LIEU OF 2" IRON PIPE PER TRACT NO. 5784, M.B. 100-18-20. REPLACED SAME WITH 2" IRON PIPE, CONC. PLUG & BRASS TAG MARKED: "L.A. CO. ENGR." FLUSH WITH SURFACE. F.B.3145-106

SET SPIKE & TIN AT RECORD DISTANCE (20.00) FROM THE SOUTHWEST PER TRACT NO. 5784, M.B. 100-18-20. F.B.3145-107

SET LEAD & BRASS TAG MARKED: "L.A. CO. ENGR." IN CONC. BASE AT A CORNER FENCE POST, RECORD ANGLE & DISTANCE (288.22) FROM THE SOUTH EAST PER TRACT NO. 5784, M.B. 100-18-20. F.B.3145-105

SET CONC. PLUG & BRASS TAG MARKED: "L.A. CO. ENGR." IN CENTER OF FOUND 2" IRON PIPE. SEE TRACT NO. 5784, M.B. 100-18-20. F.B.3145-105

SET 2" IRON PIPE, CONC. PLUG & BRASS TAG MARKED: "L.A. CO. ENGR." FLUSH WITH SURFACE BY PRORATION BETWEEN THE 2" IRON PIPES TO THE NORTH & TO THE SOUTH-EAST PER TRACT NO. M.B. 100-18-20. F.B.3145-126

SET BOAT SPIKE, WASHER & TIN AT RECORD DISTANCE (170.00) FROM NORTH PER TRACT NO. 5784, M.B. 100-18-20. F.B.3145-129, 182

SET BOAT SPIKE, WASHER & TIN AT RECORD DISTANCE (28.53) FROM NORTH PER TRACT NO. 5784, M.B. 100-18-20. F.B.3145-129, 182

SET CONC. PLUG & TAG MARKED: "L.A. CO. ENGR." IN CENTER OF FOUND 2" IRON PIPE 3" ABOVE SURFACE. SEE TRACT NO. 5784, M.B. 100-18-20. F.B.3145-104

SET CONC. PLUG & TAG MARKED: "L.A. CO. ENGR." IN CENTER OF FOUND 2" IRON PIPE 3" ABOVE SURFACE. SEE TRACT NO. 5784, M.B. 100-18-20. F.B.3145-103

SET BOAT SPIKE, WASHER & TIN BY PRORATION BETWEEN THE ANGLE POINT TO THE NORTH & THE INTERSECTION OF FREEMAN AVE. & CANYONSIDE ROAD TO THE SOUTH PER TRACT NO. 5784, M.B. 100-18-20. F.B.3145-182

SET 1" IRON PIPE, CONC. PLUG & BRASS TAG MARKED: "L.A. CO. ENGR." 6" BELOW SURFACE BY PRORATION BETWEEN THE INTERSECTION OF CANYONSIDE ROAD & MAURICE AVE. TO THE NORTHEAST & THE FIRST P.I. NORTH OF THE SECTION LINE ON FREEMAN AVE. TO THE SOUTH PER TRACT NO. 5784, M.B. 100-18-20. F.B.3145-181

COUNTY OF LOS ANGELES DEPARTMENT OF PUBLIC WORKS T. A. TIDEMANSON - COUNTY ENGINEER PREPARED BY MAPPING AND PROPERTY MANAGEMENT DIVISION AND SURVEY DIVISION SURVEYED BY <u>A. S. CURTIS</u> CHECKED BY <u>S. MASUDA</u> DRAWN BY <u>S. MASUDA</u>	MAP OF IRVING AVENUE, TRACT NO. 5784, M.B. 100-18-20 WATER WORKS DISTRICT NO. 36 (LA CRESCENTA AREA)	COUNTY SURVEYOR'S MAP NO B-5510 SHEET 3 OF 3 SHEETS FILED: <u>9/20/67</u> 1967 ASST. DEPUTY DIRECTOR SURVEYED JULY 1966 - JUNE 1967 REFERENCE F.B.3145
	BASIS OF BEARINGS THE EAST LINE OF THE WEST HALF OF SECTION 22, T. 2 N., R. 13 W. 10°57'39"W PER TRACT NO. 5784, M.B. 100-18-20	
JOB NUMBER 0208.11		INDEX MAP NO 187-217