



SECTION 33

SECTION 33

SECTION 4

SECTION 4

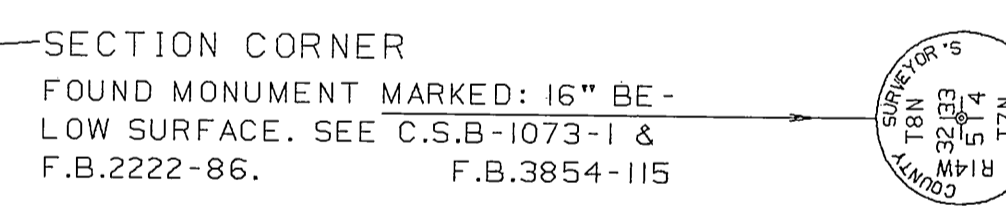
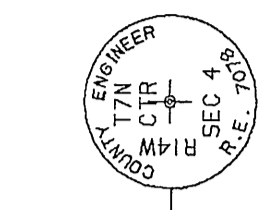
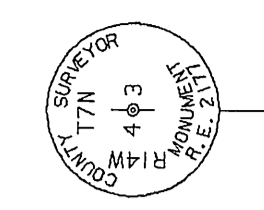
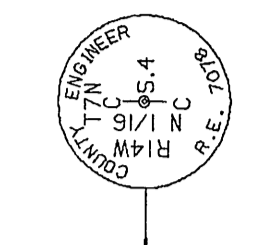
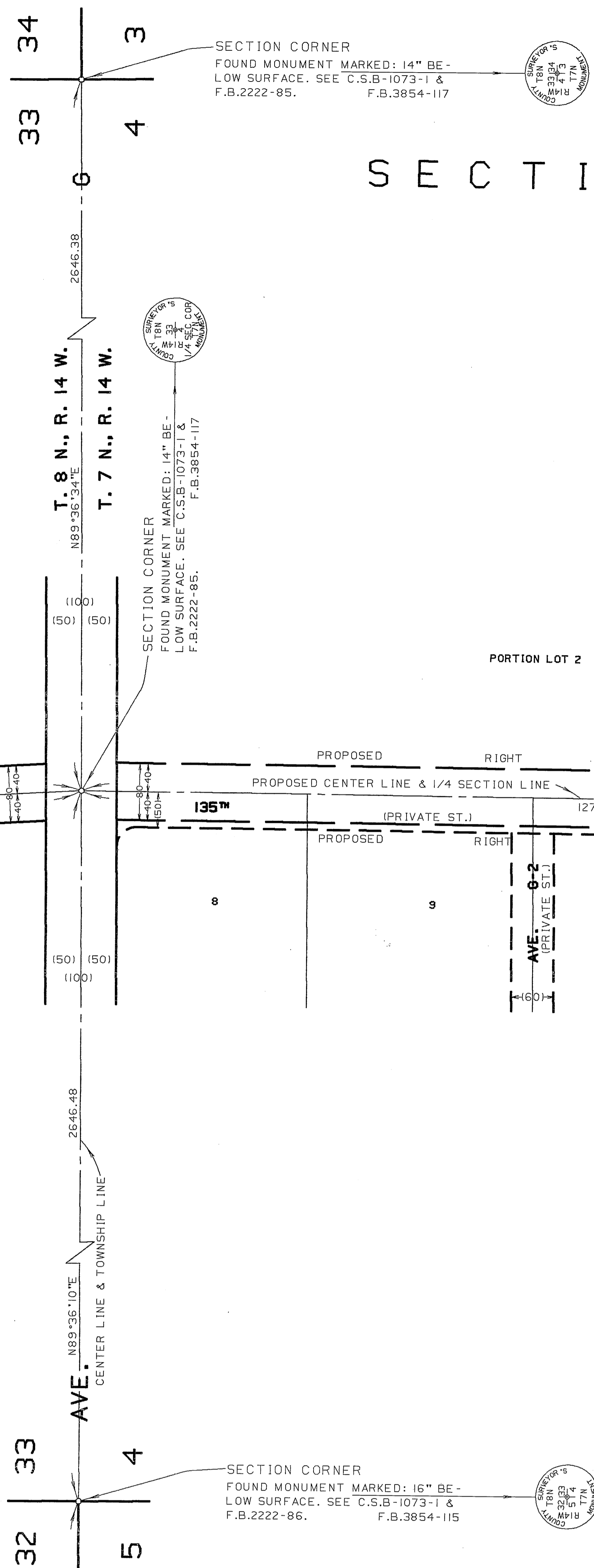
T. 7 N.,

R. 14 W.

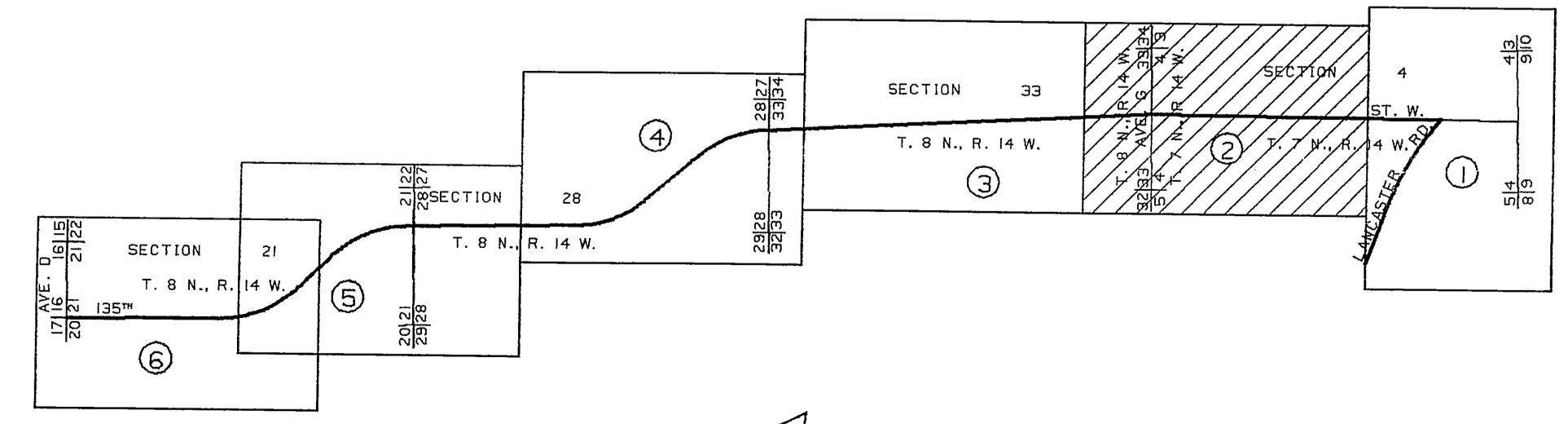
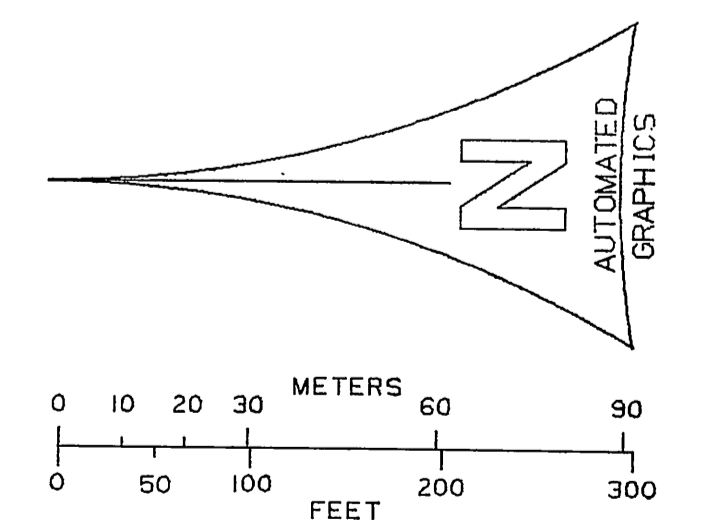
T. 8 N., R. 14 W.

MATCH LINE C.S.B. 5512-3

MATCH LINE C.S.B. 5512-1



LC CURVE DATA  
 $\Delta = 26^{\circ}10'14''$   
 $R = 2000.00$   
 $T = 461.81$   
 $L = 907.71$

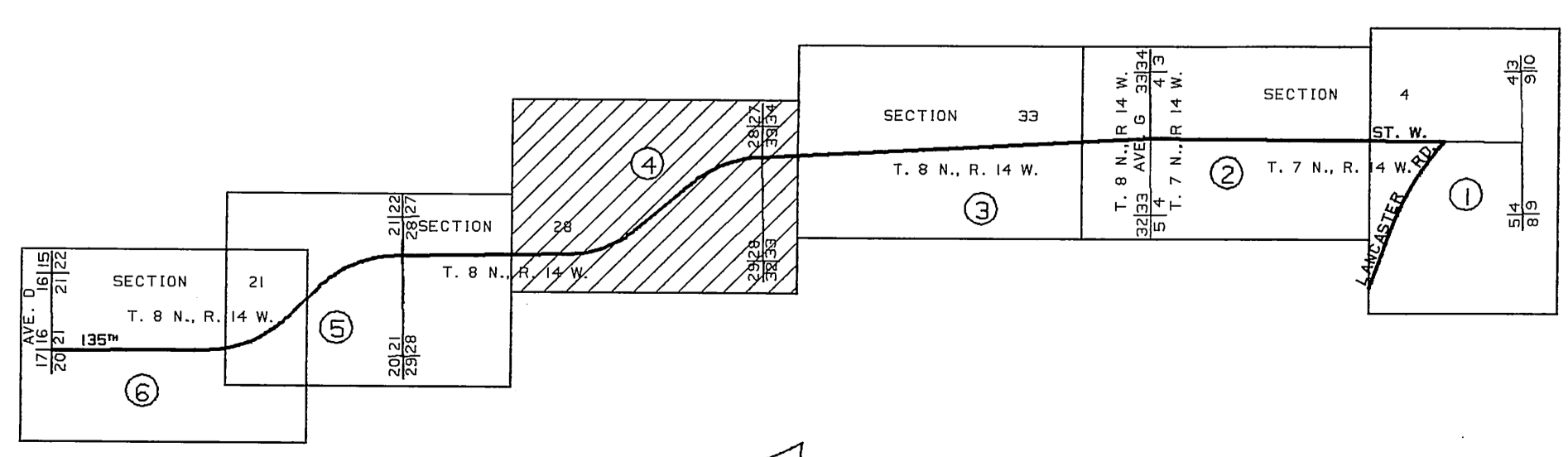
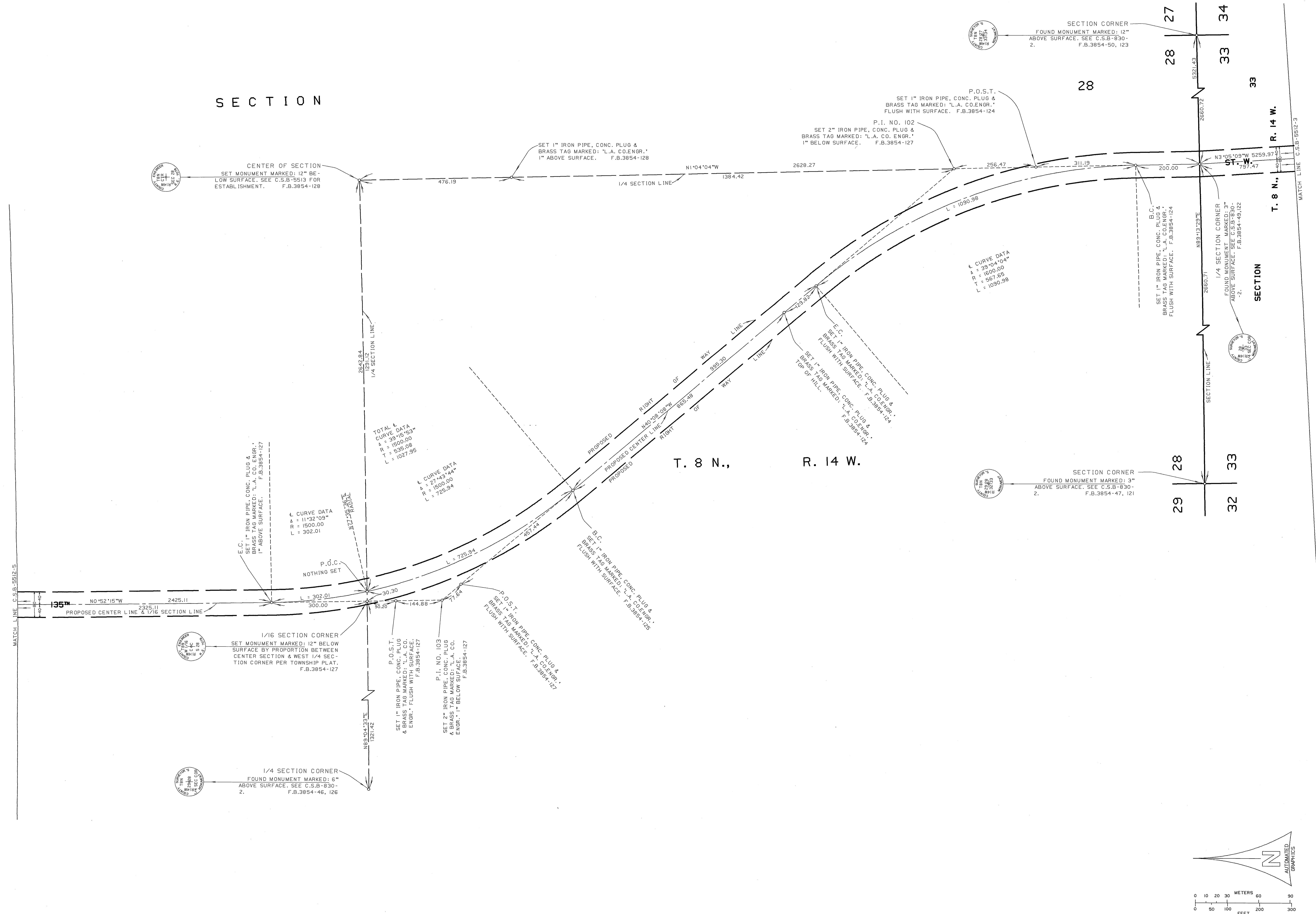


NOTE:  
 135TH STREET WEST FROM LANCASTER ROAD TO AVENUE D WAS DELETED FROM COUNTY GENERAL PLAN BY ACTION OF THE BOARD OF SUPERVISORS NOVEMBER 25, 1980. THIS MAP SHOWS THE LOCATION OF MONUMENTS SET PRIOR TO THAT DATE AND IS FILED IN CONFORMANCE WITH SECTION 8762 AND FOLLOWS THE CALIFORNIA LAND SURVEYORS ACT.

COUNTY OF LOS ANGELES DEPARTMENT OF <b>PUBLIC WORKS</b> T. A. IDEMANSON - COUNTY ENGINEER PREPARED BY MAPPING AND PROPERTY MANAGEMENT DIVISION AND SURVEY DIVISION SURVEYED BY <u>J. MENDONCA</u> CHECKED BY <u>R. HILARIO</u> DRAWN BY <u>G. MASUDA</u>	MAP OF <b>135TH STREET WEST</b> FROM <b>LANCASTER ROAD</b> TO <b>AVENUE D</b>		COUNTY SURVEYOR'S MAP NO <b>B-5512</b> SHEET 2 OF 6 SHEETS FILED: <u>3/11</u> , 19 <u>82</u> ASST. COUNTY ENGINEER SURVEYED MARCH 1972
	BASIS OF BEARINGS THE SOUTH LINE OF SW. 1/4, SECTION 4, T. 7 N., R. 14 W. (N88°35'40"E) AS SHOWN ON C.S.B. 1451-1		
	REFERENCE F.B. 3854		JOB NUMBER 0208.11
	INDEX MAP NO 72		

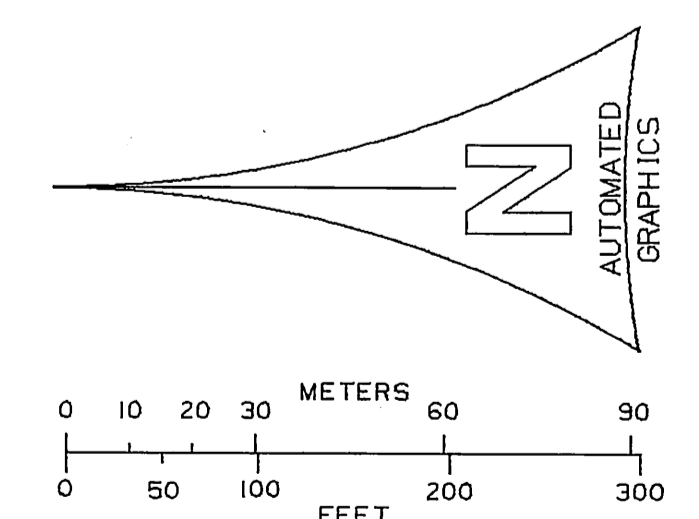


SECTION



INDEX MAP NOT TO SCALE

NOTE:  
 135TH STREET WEST FROM LANCASTER ROAD TO AVENUE D WAS DELETED FROM COUNTY GENERAL PLAN BY ACTION OF THE BOARD OF SUPERVISORS NOVEMBER 25, 1980. THIS MAP SHOWS THE LOCATION OF MONUMENTS SET PRIOR TO THAT DATE AND IS FILED IN CONFORMANCE WITH SECTION 8762 AND FOLLOWS THE CALIFORNIA LAND SURVEYORS ACT.

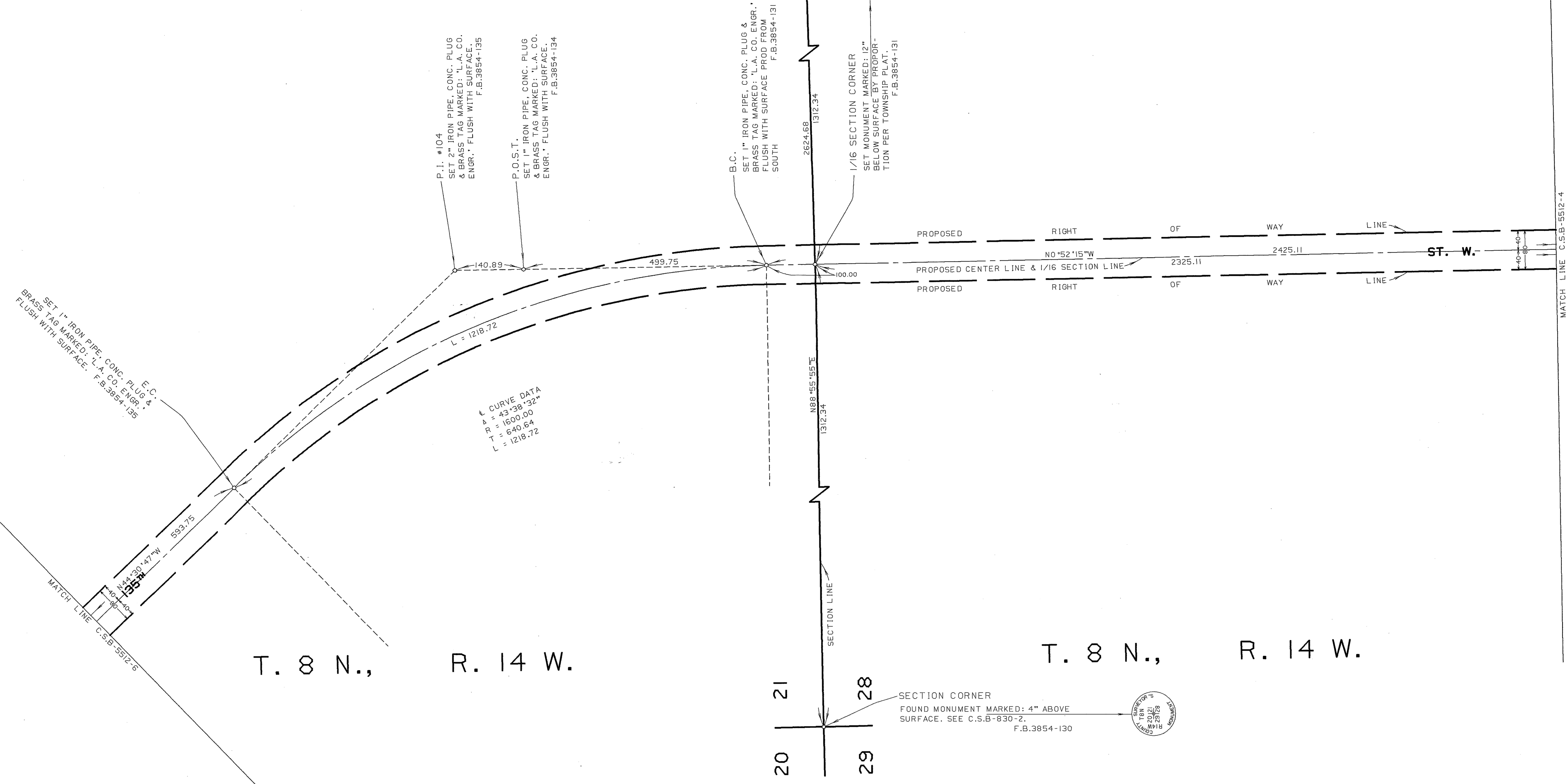


COUNTY OF LOS ANGELES DEPARTMENT OF <b>PUBLIC WORKS</b> T. A. TIDEMANSON - COUNTY ENGINEER PREPARED BY MAPPING AND PROPERTY MANAGEMENT DIVISION AND SURVEY DIVISION SURVEYED BY <u>J. MENDONCA</u> CHECKED BY <u>R. HILARIO</u> DRAWN BY <u>S. MASUDA</u>	MAP OF <b>135TH STREET WEST</b> FROM <b>LANCASTER ROAD</b> TO <b>AVENUE D</b>		COUNTY SURVEYOR'S MAP NO <b>B-5512</b> SHEET 4 OF 6 SHEETS	
	BASIS OF BEARINGS THE SOUTH LINE OF SW 1/4, SECTION 4, T. 7 N., R. 14 W. (N88°35'40"E) AS SHOWN ON C.S.B-1451-1		FILED: <u>2/22/82</u> , 1982 ASST. DEPUTY DIRECTOR SURVEYED MARCH 1972 REFERENCE F.B.3854	
			JOB NUMBER 0208.11	INDEX MAP NO 72
				AUTOMATED GRAPHICS

SECTION 21

SECTION 28

SECTION 28



CURVE DATA  
 A = 43.98 30"  
 R = 1600.00  
 T = 640.84  
 L = 1219.72

SET 1" IRON PIPE CONC. PLUG & BRASS TAG MARKED: "L.A. CO. ENGR." FLUSH WITH SURFACE. F.B.3854-135

P.I. #104  
 SET 2" IRON PIPE CONC. PLUG & BRASS TAG MARKED: "L.A. CO. ENGR." FLUSH WITH SURFACE. F.B.3854-135

P.O.S.T.  
 SET 1" IRON PIPE CONC. PLUG & BRASS TAG MARKED: "L.A. CO. ENGR." FLUSH WITH SURFACE. F.B.3854-134

B.C.  
 SET 1" IRON PIPE CONC. PLUG & BRASS TAG MARKED: "L.A. CO. ENGR." FLUSH WITH SURFACE F.B.3854-131

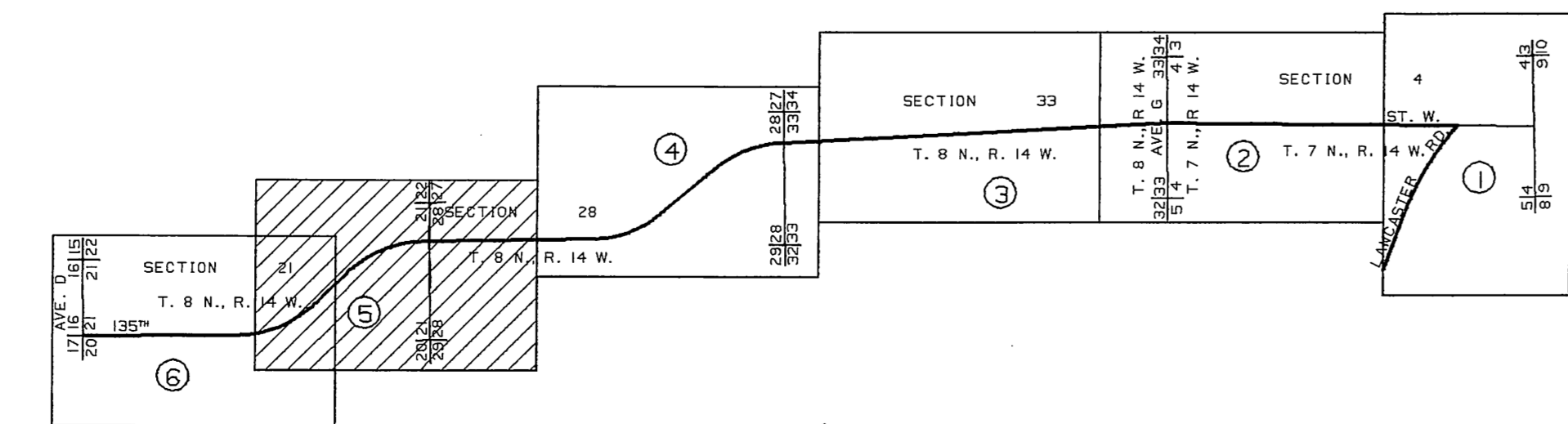
1/16 SECTION CORNER  
 FOUND MONUMENT MARKED: 12" BELOW SURFACE BY TOWNSHIP PLAT. F.B.3854-131

1/4 SECTION CORNER  
 FOUND MONUMENT MARKED: 12" BELOW SURFACE. SEE C.S.B-830-2. F.B.3854-132

SECTION CORNER  
 FOUND MONUMENT MARKED: 4" ABOVE SURFACE. SEE C.S.B-830-2. F.B.3854-130

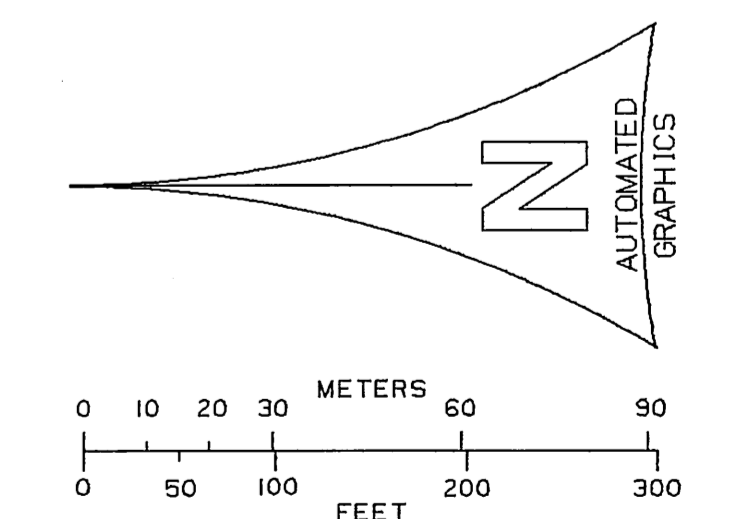
T. 8 N., R. 14 W.

T. 8 N., R. 14 W.

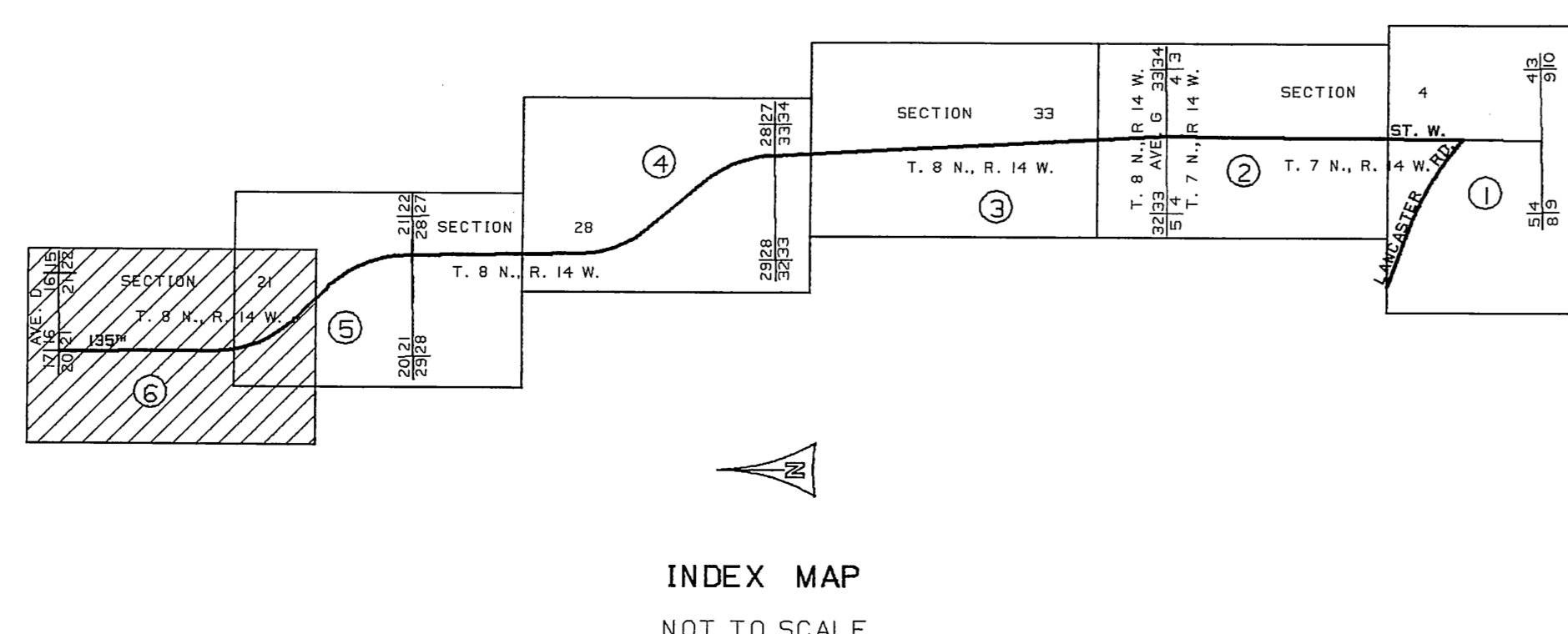
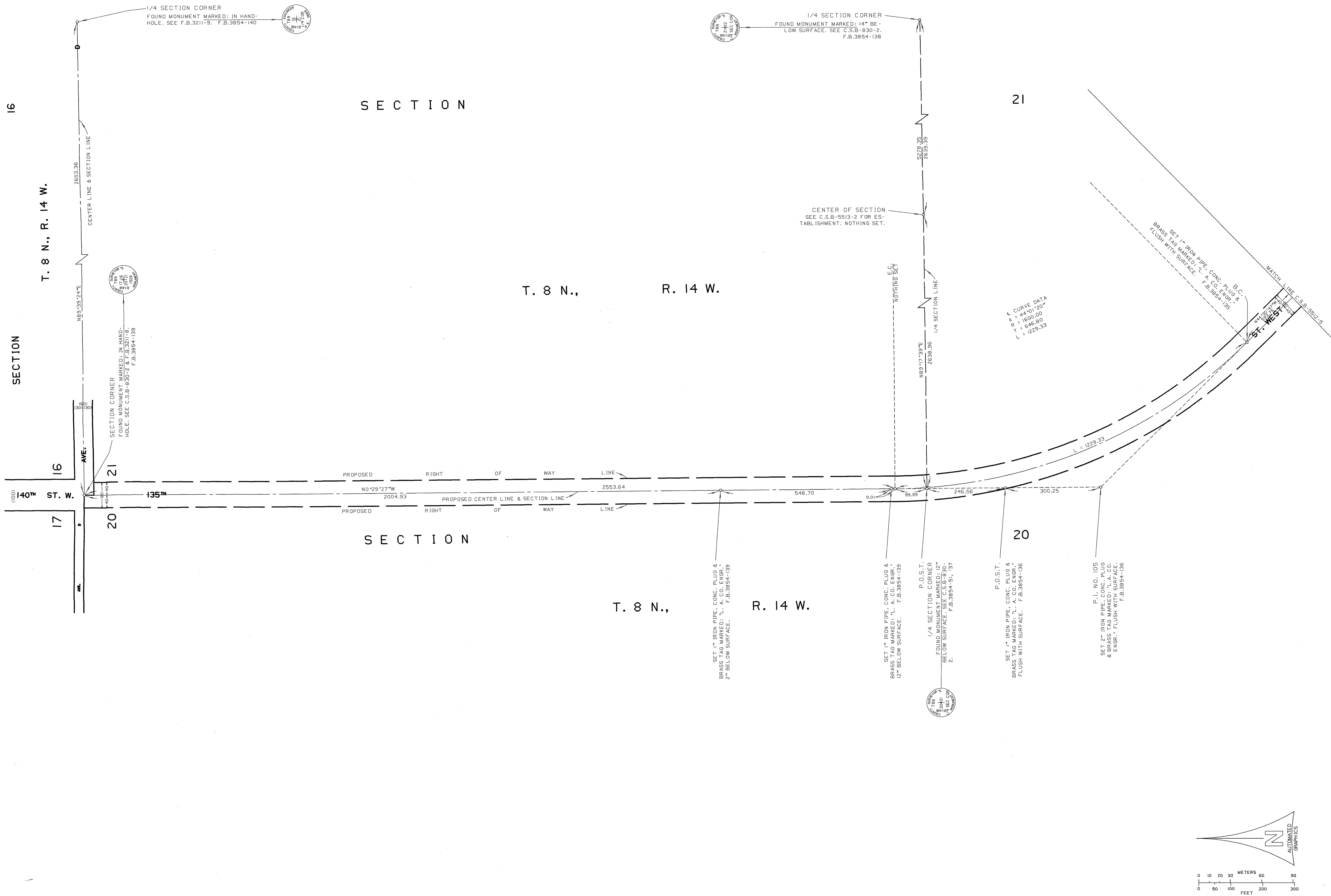


INDEX MAP NOT TO SCALE

NOTE:  
 135TH STREET WEST FROM LANCASTER ROAD TO AVENUE D WAS DELETED FROM COUNTY GENERAL PLAN BY ACTION OF THE BOARD OF SUPERVISORS NOVEMBER 25, 1980. THIS MAP SHOWS THE LOCATION OF MONUMENTS SET PRIOR TO THAT DATE AND IS FILED IN CONFORMANCE WITH SECTION 8762 AND FOLLOWS THE CALIFORNIA LAND SURVEYORS ACT.



COUNTY OF LOS ANGELES DEPARTMENT OF <b>PUBLIC WORKS</b> T. A. TIDEMANSON - COUNTY ENGINEER PREPARED BY MAPPING AND PROPERTY MANAGEMENT DIVISION AND SURVEY DIVISION SURVEYED BY <u>J. MENDONCA</u> CHECKED BY <u>P. HILARIO</u> DRAWN BY <u>G. MASUDA</u>	MAP OF <b>135TH STREET WEST</b> FROM <b>LANCASTER ROAD</b> TO <b>AVENUE D</b>		COUNTY SURVEYOR'S MAP NO <b>B-5512</b> SHEET 5 OF 6 SHEETS
	BASIS OF BEARINGS THE SOUTH LINE OF SW 1/4, SECTION 4, T. 7 N., R. 14 W. (N88°35'40"E) AS SHOWN ON C.S.B-1451-1		FILED: <u>3/24</u> , 19 <u>82</u> ASST. DEPUTY DIRECTOR SURVEYED MARCH 1972 REFERENCE F.B.3854
			JOB NUMBER 0208.11
			INDEX MAP NO 72



NOTE:  
 135TH STREET WEST FROM LANCASTER ROAD TO AVENUE D WAS DELETED FROM COUNTY GENERAL PLAN BY ACTION OF THE BOARD OF SUPERVISORS NOVEMBER 25, 1980. THIS MAP SHOWS THE LOCATION OF MONUMENTS SET PRIOR TO THAT DATE AND IS FILED IN CONFORMANCE WITH SECTION 8762 AND FOLLOWS THE CALIFORNIA LAND SURVEYORS ACT.

COUNTY OF LOS ANGELES DEPARTMENT OF <b>PUBLIC WORKS</b> T. A. TIDEMANSON - COUNTY ENGINEER PREPARED BY MAPPING AND PROPERTY MANAGEMENT DIVISION AND SURVEY DIVISION SURVEYED BY <u>MENDONCA</u> CHECKED BY <u>R. HILARIO</u> DRAWN BY <u>G. MASUDA</u>	MAP OF <b>135TH STREET WEST</b> FROM <b>LANCASTER ROAD</b> TO <b>AVENUE D</b>		COUNTY SURVEYOR'S MAP NO <b>B-5512</b> SHEET 6 OF 6 SHEETS
	BASIS OF BEARINGS THE SOUTH LINE OF SW. 1/4, SECTION 4, T. 7 N., R. 14 W. (N88°35'40"E) AS SHOWN ON C.S.B-1451-1		FILED: <u>1982</u> ASST. DEPUTY DIRECTOR SURVEYED MARCH 1972 REFERENCE F.B.3854
			JOB NUMBER 0208.11
			INDEX MAP NO 72