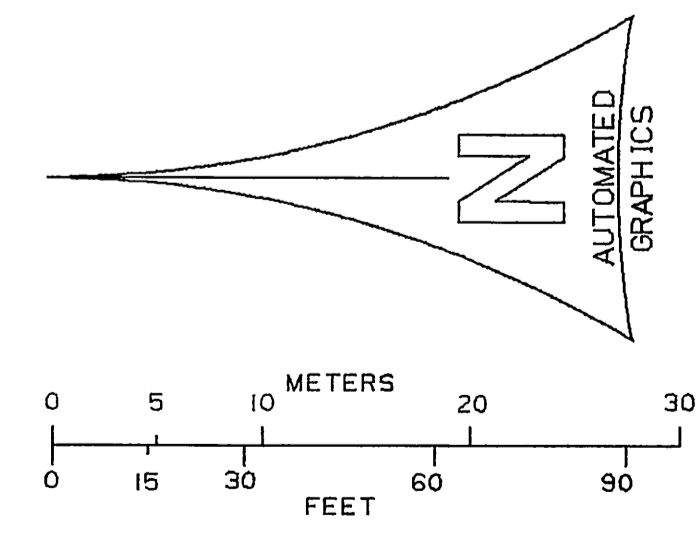
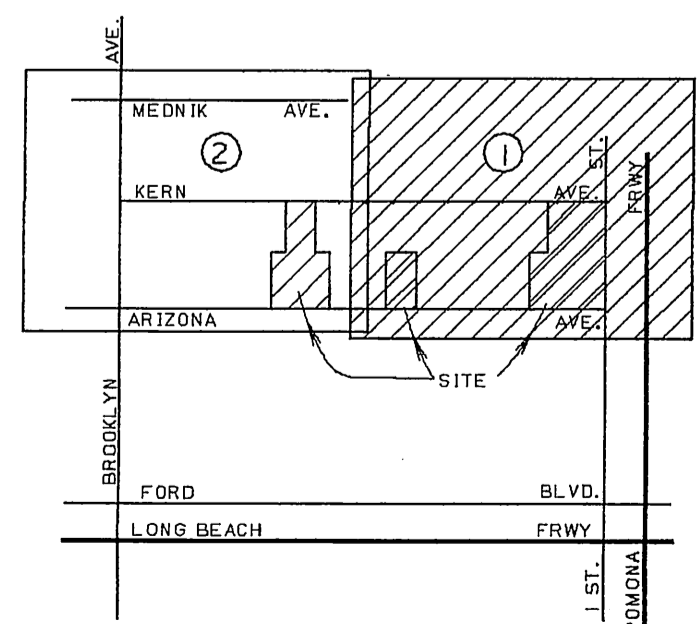
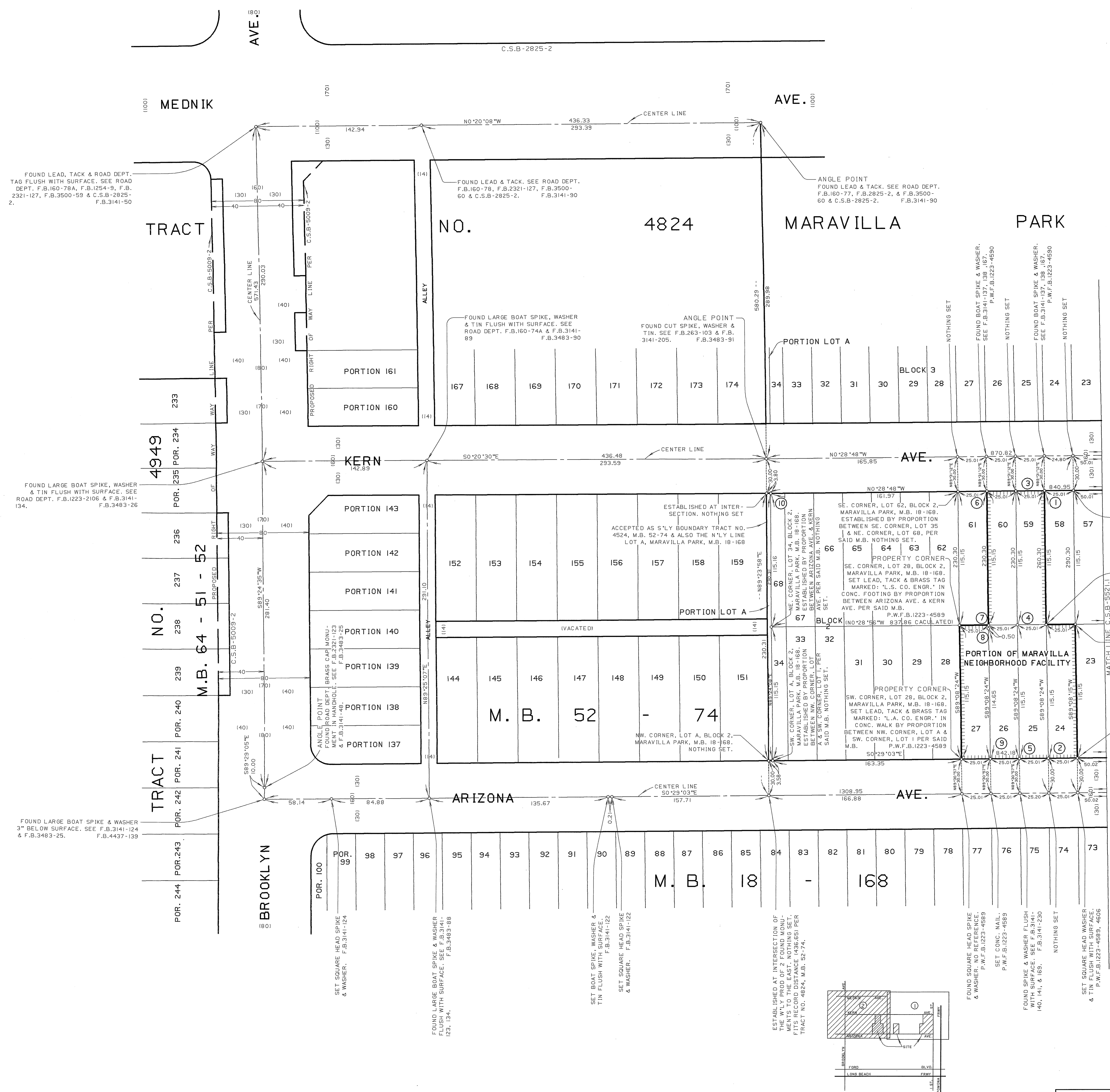


FRWY
POMONA

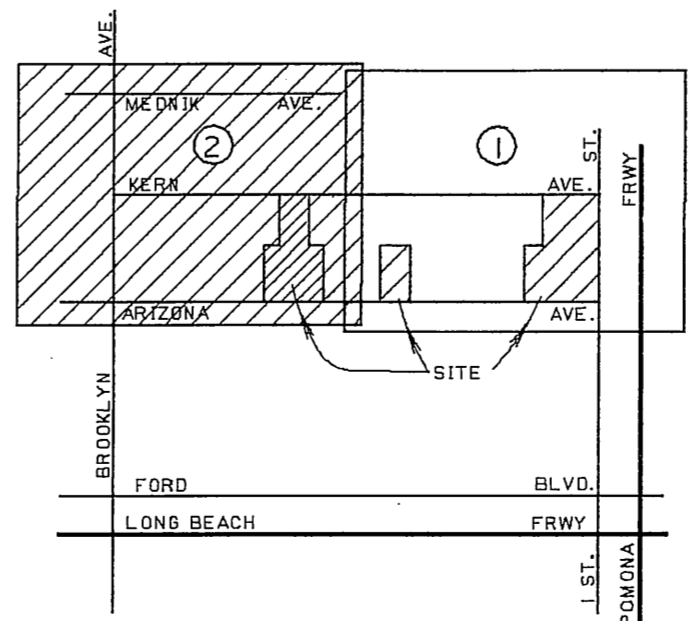
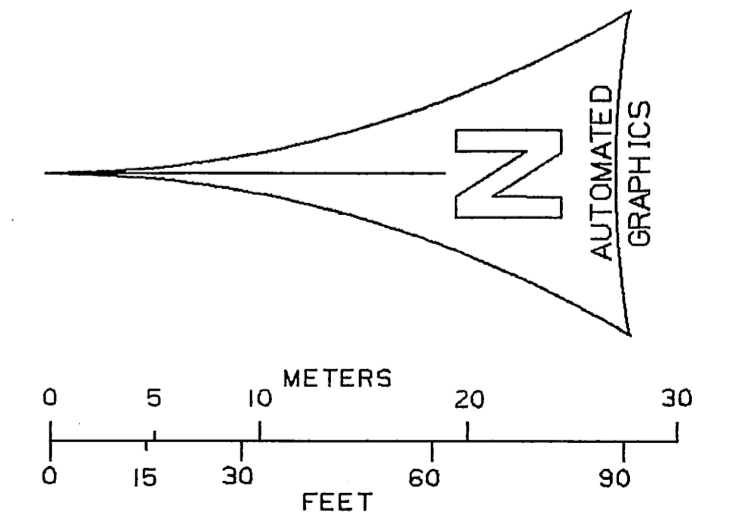
- ① SET SQUARE HEAD SPIKE & TIN FLUSH WITH SURFACE. F.B.3141-163
- ② SE. CORNER, LOT 35, BLOCK 2, MARAVILLA PARK, M.B. 18-168. NOTHING SET.
- ③ SE. CORNER, LOT 1, BLOCK 2, MARAVILLA PARK, M.B. 18-168. ESTABLISHED BY PROPORTION BETWEEN ARIZONA AVE. & KERN AVE. PER SAID M.B. NOTHING SET.
- ④ SW. CORNER, LOT 1, BLOCK 2, MARAVILLA PARK, M.B. 18-168. NOTHING SET.
- ⑤ PROPERTY CORNER. SET 2" IRON PIPE, CONC. PLUG & BRASS TAG MARKED: 'L.A. CO. ENGR.' 6" BELOW SURFACE. F.B.3141-165
- ⑥ PROPERTY CORNER. SET 2" IRON PIPE, CONC. PLUG & BRASS TAG MARKED: 'L.A. CO. ENGR.' 6" BELOW SURFACE. F.B.3141-163
- ⑦ PROPERTY CORNER. SE. CORNER, LOT 42, BLOCK 2, MARAVILLA PARK, M.B. 18-168. SET LEAD, TACK & BRASS TAG MARKED: 'L.A. CO. ENGR.' IN CONC. FENCE POST BASE 6" ABOVE SURFACE BY PROPORTION BETWEEN SE. CORNER, LOT 35 & NE. CORNER, LOT 68, BLOCK 2, MARAVILLA PARK, M.B. 18-168 PER SAID M.B. F.B.3141-166
- ⑧ PROPERTY CORNER. NE. CORNER, LOT 7, BLOCK 2, MARAVILLA PARK, M.B. 18-168. SET 2" IRON PIPE, CONC. PLUG & BRASS TAG MARKED: 'L.A. CO. ENGR.' BY PROPORTION BETWEEN SE. CORNER, LOT 42 & NW. CORNER, LOT 7 PER SAID M.B. F.B.3141-170
- ⑨ NW. CORNER, LOT 7, BLOCK 2, MARAVILLA PARK, M.B. 18-168. ESTABLISHED BY PROPORTION BETWEEN NW. CORNER, LOT A & SW. CORNER, LOT 1, BLOCK 2, MARAVILLA PARK, M.B. 18-168 PER SAID M.B. NOTHING SET.
- ⑩ SE. CORNER, LOT 43, BLOCK 2, MARAVILLA PARK, M.B. 18-168. ESTABLISHED BY PROPORTION BETWEEN SE. CORNER, LOT 35 & NE. CORNER, LOT 68, BLOCK 2, MARAVILLA PARK, M.B. 18-168 PER SAID M.B. NOTHING SET.
- ⑪ PROPERTY CORNER. NW. CORNER, LOT 18, BLOCK 2, MARAVILLA PARK, M.B. 18-168. SET 2" IRON PIPE, CONC. PLUG & BRASS TAG MARKED: 'L.A. CO. ENGR.' FLUSH WITH SURFACE BY PROPORTION BETWEEN NW. CORNER, LOT A & SW. CORNER, LOT 1, BLOCK 2, MARAVILLA PARK, M.B. 18-168 PER SAID M.B. P.W.F.B.1223-4605
- ⑫ SE. CORNER, LOT 56, BLOCK 2, MARAVILLA PARK, M.B. 18-168. ESTABLISHED BY PROPORTION BETWEEN SE. CORNER, LOT 35 & NE. CORNER, LOT 68, BLOCK 2, MARAVILLA PARK, M.B. 18-168 PER SAID M.B. NOTHING SET.
- ⑬ PROPERTY CORNER. SW. CORNER, LOT 22, BLOCK 2, MARAVILLA PARK, M.B. 18-168. SET BRASS TAG MARKED: 'L.A. CO. ENGR.' IN CONC. BY PROPORTION BETWEEN NW. CORNER, LOT A & SW. CORNER, LOT 1, BLOCK 2, MARAVILLA PARK, M.B. 18-168 PER SAID M.B. P.W.F.B.1223-4605



COUNTY OF LOS ANGELES DEPARTMENT OF PUBLIC WORKS T. A. TIDEMANSON - COUNTY ENGINEER PREPARED BY MAPPING AND PROPERTY MANAGEMENT DIVISION AND SURVEY DIVISION SURVEYED BY <u>M. E. WACKER</u> CHECKED BY <u>B. HILARIO</u> DRAWN BY <u>G. MASUDA</u>	MAP OF PORTION OF MARAVILLA NEIGHBORHOOD FACILITY (EAST LOS ANGELES AREA)		COUNTY SURVEYOR'S MAP NO B-5521 SHEET 1 OF 2 SHEETS
	BASIS OF BEARINGS THE CENTERLINE OF ARIZONA AVE. (S0°29'03"E) AS SHOWN ON C.S.B-5009		FILED: <u>[Signature]</u> 1982 ASST. DEPUTY DIRECTOR SURVEYED AUGUST 1977 JUNE 1985
	REFERENCE F.B.3141 F.B.3483 F.B.4437 P.W.F.B.1223		JOB NUMBER 0208.11
	INDEX MAP NO 36		



- ① PROPERTY CORNER NE. CORNER, LOT 58, BLOCK 2, MARAVILLA PARK, M.B. 18-168. FOUND 2" IRON PIPE, CONC. PLUG & BRASS TAG MARKED: 'L.A. CO. ENGR.' 2" BELOW SURFACE. SEE F.B.3141-136, 167. P.W.F.B.1223-4590
- ② NW. CORNER, LOT 24, BLOCK 2, MARAVILLA PARK, M.B. 18-168. ESTABLISHED BY PROPORTION BETWEEN NW. CORNER, LOT A & SW. CORNER, LOT 1. PER SAID M.B. NOTHING SET.
- ③ NE. CORNER, LOT 59, BLOCK 2, MARAVILLA PARK, M.B. 18-168. ESTABLISHED BY PROPORTION BETWEEN SE. CORNER, LOT 35 & NE. CORNER, LOT 68. PER SAID M.B. NOTHING SET.
- ④ NW. CORNER, LOT 59, BLOCK 2, MARAVILLA PARK, M.B. 18-168. ESTABLISHED BY PROPORTION BETWEEN ARIZONA AVE. & KERN AVE. PER SAID M.B. NOTHING SET.
- ⑤ NW. CORNER, LOT 25, BLOCK 2, MARAVILLA PARK, M.B. 18-168. ESTABLISHED BY PROPORTION BETWEEN NW. CORNER, LOT A & SW. CORNER, LOT 1. PER SAID M.B. NOTHING SET.
- ⑥ PROPERTY CORNER SE. CORNER, LOT 61, BLOCK 2, MARAVILLA PARK, M.B. 18-168. FOUND 2" IRON PIPE, CONC. PLUG & BRASS TAG MARKED: 'L.A. CO. ENGR.' 6" BELOW SURFACE, UNDER 6" CONC. CURB. SEE F.B.3141-136, 167. P.W.F.B.1223-4590
- ⑦ PROPERTY CORNER SW. CORNER, LOT 61, BLOCK 2, MARAVILLA PARK, M.B. 18-168. ESTABLISHED BY PROPORTION BETWEEN ARIZONA AVE. & KERN AVE. PER SAID M.B. NOTHING SET. LARGE WOOD PILE & JUNK YARD. P.W.F.B.1223-4589
- ⑧ SET CHISELED 'V' ON TOP OF CONC. BLOCK WALL. P.W.F.B.1223-4589
- ⑨ NW. CORNER, LOT 26, BLOCK 2, MARAVILLA PARK, M.B. 18-168. ESTABLISHED BY PROPORTION BETWEEN NW. CORNER, LOT A & SW. CORNER, LOT 1. PER SAID M.B. NOTHING SET.
- ⑩ NE. CORNER, LOT 68, BLOCK 2, MARAVILLA PARK, M.B. 18-168. ESTABLISHED BY CALCULATED RECORD DISTANCE (3.80) FROM THE N'LY LINE, LOT A PER SAID M.B. NOTHING SET.



COUNTY OF LOS ANGELES DEPARTMENT OF PUBLIC WORKS T. A. TIDEMANSON - COUNTY ENGINEER PREPARED BY MAPPING AND PROPERTY MANAGEMENT DIVISION AND SURVEY DIVISION SURVEYED BY <u>M. E. WACKER</u> CHECKED BY <u>B. HILARIO</u> DRAWN BY <u>G. MASUDA</u>	MAP OF PORTION OF MARAVILLA NEIGHBORHOOD FACILITY (EAST LOS ANGELES AREA)		COUNTY SURVEYOR'S MAP NO B-5521 SHEET 2 OF 2 SHEETS FILED: <u>1223</u> , 19 <u>82</u> ASST. DEPUTY DIRECTOR SURVEYED AUGUST 1977 JUNE 1985
	BASIS OF BEARINGS THE CENTERLINE OF ARIZONA AVE. (S0°29'03"E) AS SHOWN ON C.S.B-5009		REFERENCE F.B.3141 F.B.3483 F.B.4437 P.W.F.B.1223 JOB NUMBER 0208.11 INDEX MAP NO 36