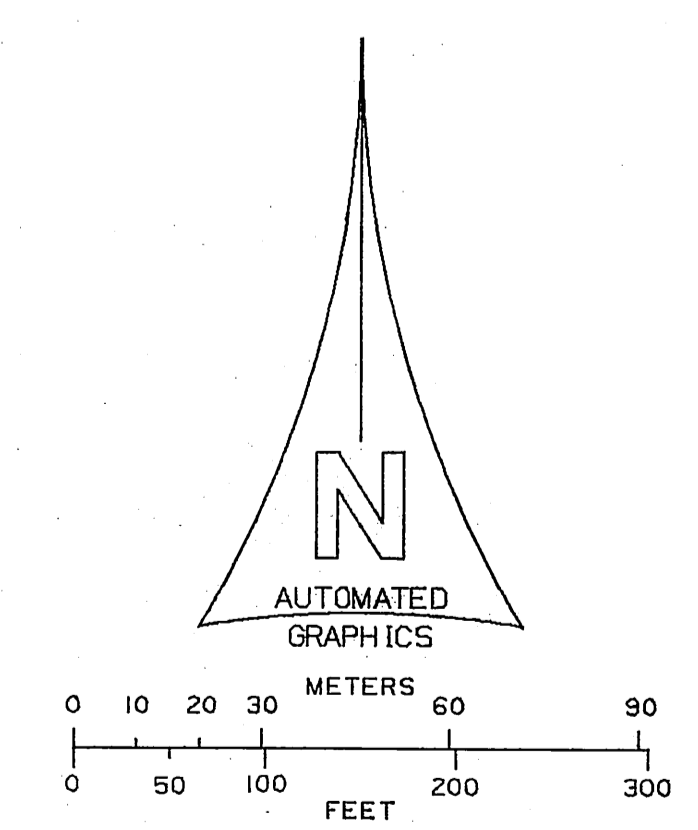
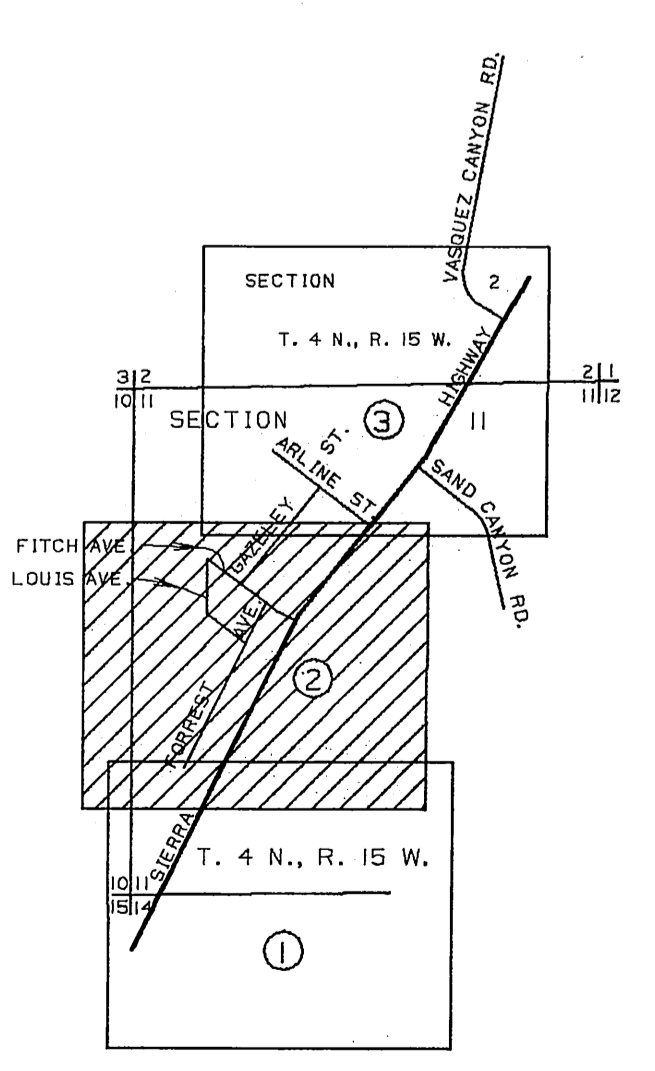
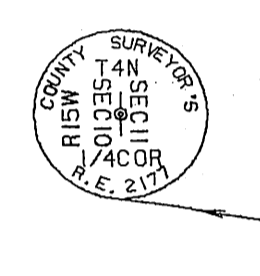


- ① FOUND 2" IRON PIPE & NAIL, 6" BELOW SURFACE. SET CONC. PLUG & BRASS TAG MARKED: "L.A. CO. ENGR." SEE TRACT NO. 10847, M.B. 188-43-44 & FLOOD CONTROL F.B. 2949-65. F.B.1811-89
- ② P.O.S.T. FOUND BOAT SPIKE & WASHER, FLUSH WITH SURFACE. REPLACED SAME WITH BOAT SPIKE, TIN & WASHER MARKED: "L.A. CO. ENGR." FLUSH WITH SURFACE. SEE ROAD DEPT. F.B.2715-40. F.B.1811-52
- ③ P.O.S.T. FOUND PUNCH MARK IN WASHER. REPLACED SAME WITH BOAT SPIKE, TIN & WASHER MARKED: "L.A. CO. ENGR." FLUSH WITH SURFACE. SEE ROAD DEPT. F.B.2715-40. F.B.1811-52, 117
- ④ P.I. FOUND BOAT SPIKE & WASHER, FLUSH WITH SURFACE. REPLACED SAME WITH BOAT SPIKE, TIN & WASHER MARKED: "L.A. CO. ENGR." SEE ROAD DEPT. F.B.2217-12, 40. F.B.1811-53, 117
- ⑤ P.O.S.T. FOUND BOAT SPIKE & WASHER, FLUSH WITH SURFACE. REPLACED SAME WITH BOAT SPIKE, TIN & WASHER MARKED: "L.A. CO. ENGR." SEE ROAD DEPT. F.B.2217-40. F.B.1811-53
- ⑥ P.I. FOUND CONC. NAIL. NO REFERENCE. HELD FOR LINE. REPLACED SAME WITH BOAT SPIKE, TIN & WASHER MARKED: "L.A. CO. ENGR." FLUSH WITH SURFACE. F.B.1811-83
- ⑦ FOUND CONC. NAIL. NO REFERENCE. REPLACED SAME WITH SQUARE HEAD SPIKE. F.B.1811-83
- ⑧ FOUND 2" IRON PIPE, CONC. PLUG & TAG MARKED: "L.S. 3041' 20" BELOW SURFACE. SEE TRACT NO. 10581, M.B. 163-44-45, ROAD DEPT. F.B. 2715-44 & FLOOD CONTROL F.B.2949-67. F.B.1811-83
- ⑨ FOUND SQUARE HEAD SPIKE & TIN, 2" BELOW SURFACE. SEE ROAD DEPT. F.B.2715-44 & FLOOD CONTROL F.B. 2947-67. F.B.1811-84
- ⑩ SET BOAT SPIKE, TIN & WASHER MARKED: "L.A. CO. ENGR." FLUSH WITH SURFACE AT RECORD DISTANCE (126.91) FROM P.I. SE'LY PER TRACT NO. 10847, M.B. 188-43-44. F.B.1811-84
- ⑪ ANGLE POINT TRACT NO. 10847, M.B. 188-43-44 SET BOAT SPIKE, TIN & WASHER MARKED: "L.A. CO. ENGR." FLUSH WITH SURFACE BY PROPORTION BETWEEN P.I. FROM THE SOUTH & FITCH AVE. PER SAID TRACT. F.B.1811-111
- ⑫ SET 2" IRON PIPE, CONC. PLUG & BRASS TAG MARKED: "L.A. CO. ENGR." 6" BELOW SURFACE AT INTERSECTION. F.B.1811-112
- ⑬ SET 1" IRON PIPE, CONC. PLUG & BRASS TAG MARKED: "L.A. CO. ENGR." FLUSH WITH SURFACE. F.B.1811-116



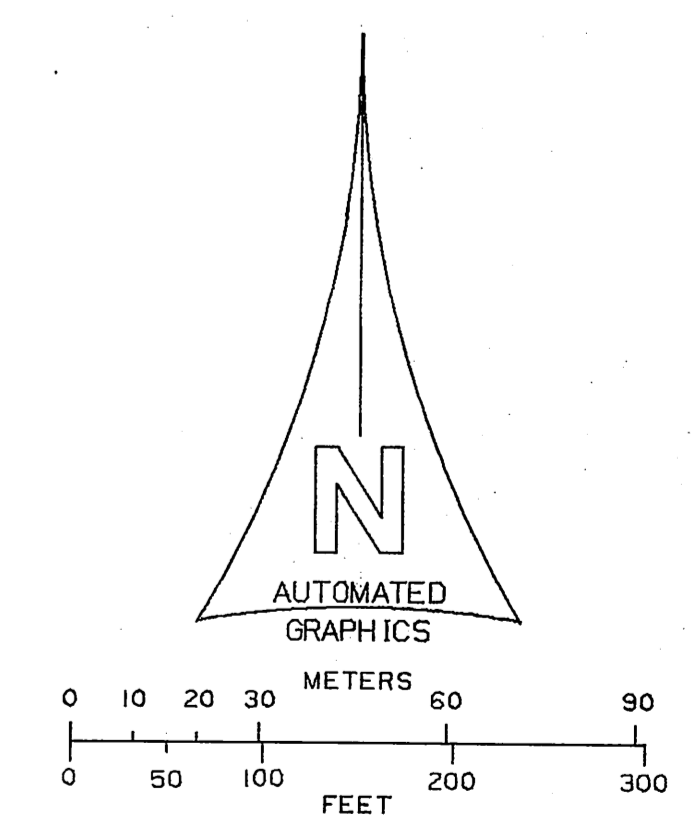
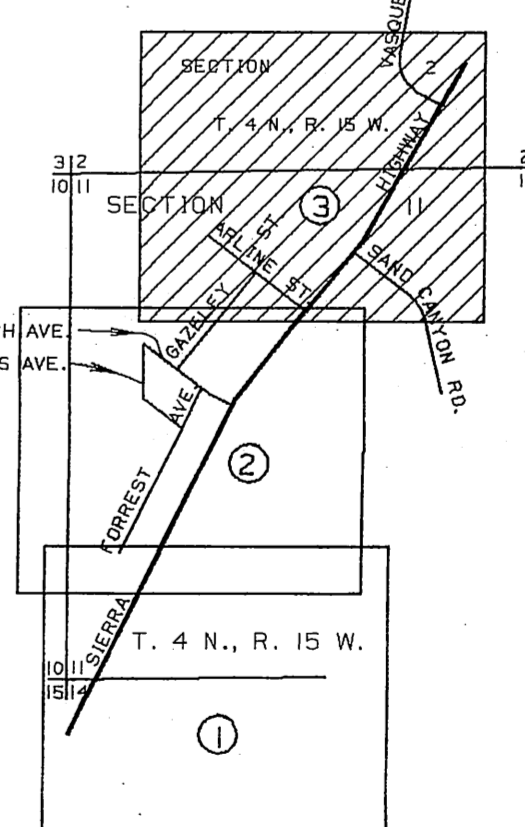
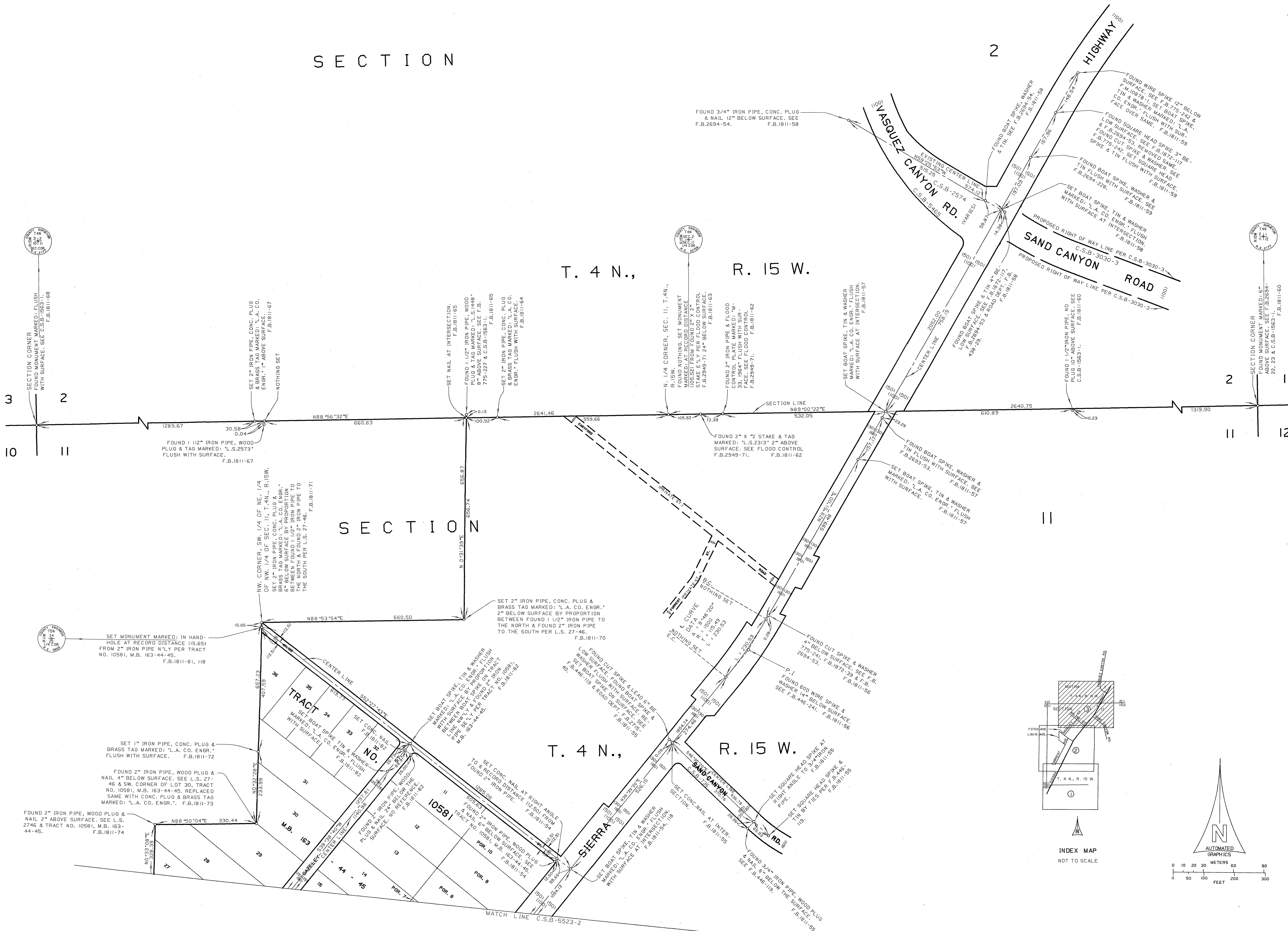
COUNTY OF LOS ANGELES DEPARTMENT OF PUBLIC WORKS T. A. TIDEMANSON - COUNTY ENGINEER PREPARED BY MAPPING AND PROPERTY MANAGEMENT DIVISION AND SURVEY DIVISION SURVEYED BY <u>R. STRAPER</u> CHECKED BY <u>B. HILARIO</u> DRAWN BY <u>G. MASUDA</u>	MAP OF FITCH AVENUE AREA STREET CENTER LINES (SAUGUS AREA)		COUNTY SURVEYOR'S MAP NO B-5523 SHEET 2 OF 3 SHEETS
	BASIS OF BEARINGS CALIFORNIA COORDINATE SYSTEM, ZONE 7		FILED: <u>4/14</u> 19 <u>82</u> ASST. COUNTY DIRECTOR
	SURVEYED OCTOBER 1976		REFERENCE F.B.1811
	JOB NUMBER 0208.11		INDEX MAP NO 264-157

SECTION

T. 4 N., R. 15 W.

SECTION

T. 4 N., R. 15 W.



COUNTY OF LOS ANGELES DEPARTMENT OF PUBLIC WORKS T. A. TIDEMANSON - COUNTY ENGINEER PREPARED BY MAPPING AND PROPERTY MANAGEMENT DIVISION AND SURVEY DIVISION SURVEYED BY <u>R. STRADER</u> CHECKED BY <u>R. HILARIO</u> DRAWN BY <u>S. MASUDA</u>	MAP OF FITCH AVENUE AREA STREET CENTER LINES (SAUGUS AREA)		COUNTY SURVEYOR'S MAP NO B-5523 SHEET 3 OF 3 SHEETS
	FILED: <u>11/14/82</u> , 1982 ASST. DEPUTY DIRECTOR		SURVEYED OCTOBER 1976
	BASIS OF BEARINGS CALIFORNIA COORDINATE SYSTEM, ZONE 7		REFERENCE F.B.1811
	JOB NUMBER 0208.11		INDEX MAP NO 264-157