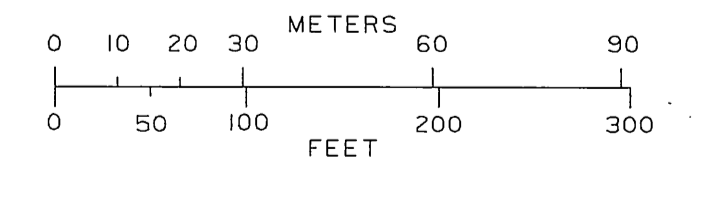
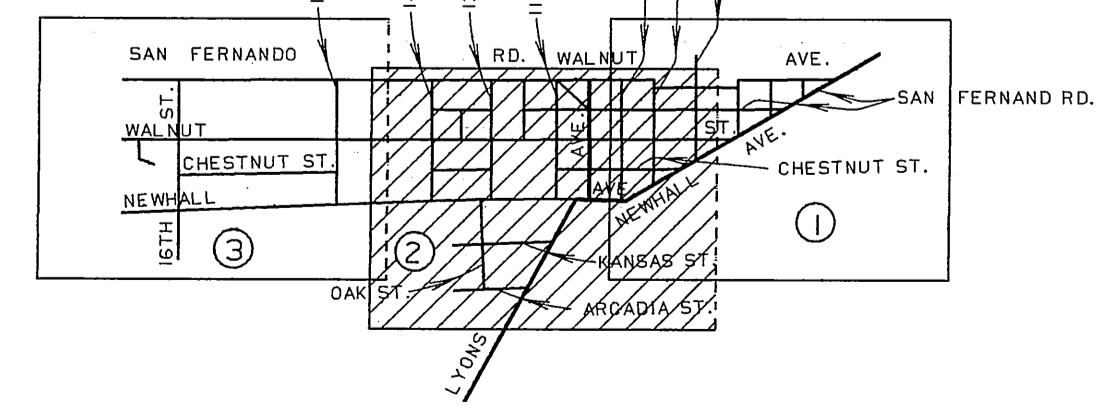


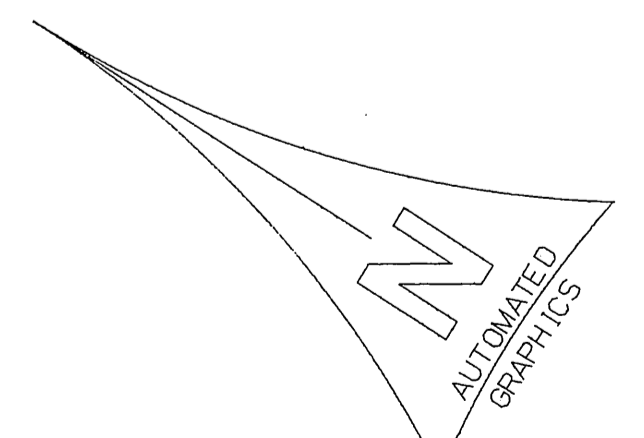
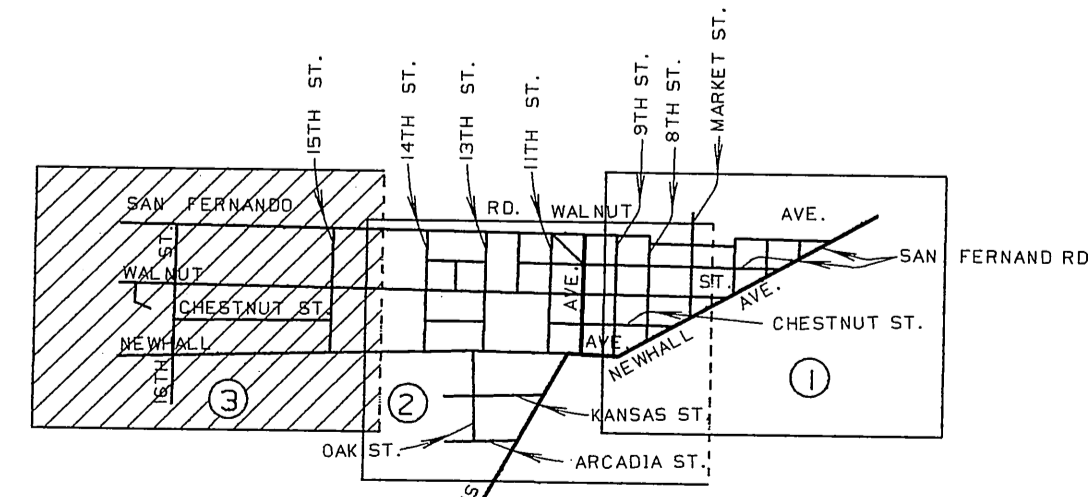
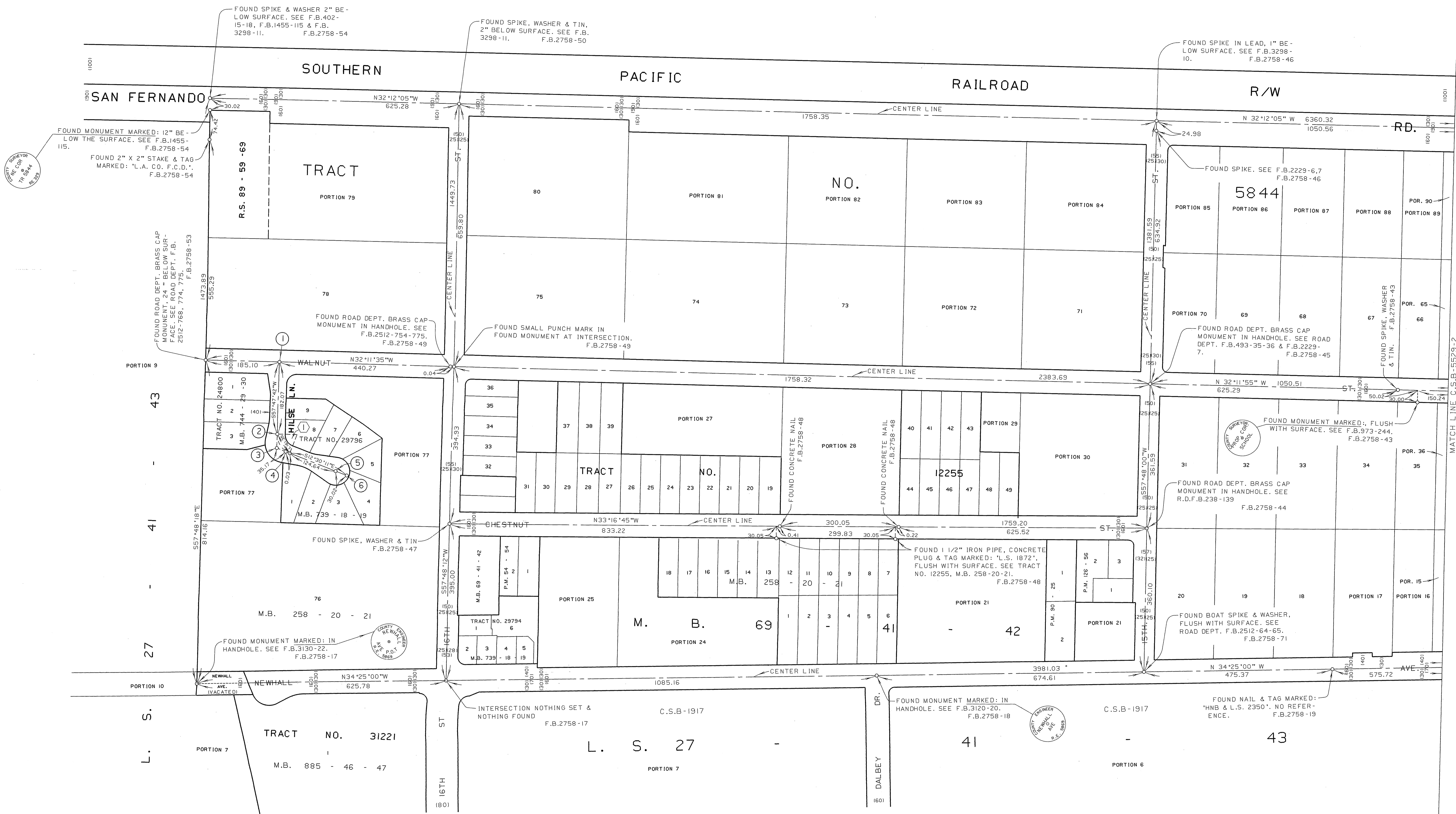
- ① FOUND SMALL PUNCH MARK ON FOUND MONUMENT AT INTERSECTION. F.B.2758-41
- ② FOUND ROAD DEPT. BRASS CAP MONUMENT IN HANDHOLE. SEE ROAD DEPT. F.B.2512-782. F.B.2758-40 & 41
- ③ FOUND 1 1/2" IRON PIPE 4" BELOW THE SURFACE. SEE TRACT NO. 9402, M.B. 129-99. F.B.2758-40
- ④ FOUND 2" IRON PIPE, PLUG & TIN. SEE TRACT NO. 9402, M.B. 129-99. F.B.2758-40
- ⑤ FOUND SPIKE, WASHER & TIN. PER F.B.2758-41
- ⑥ FOUND ROAD DEPT. BRASS CAP MONUMENT IN HANDHOLE. SEE ROAD DEPT. F.B.2297-232. F.B.2758-38
- ⑦ FOUND ROAD DEPT. BRASS CAP MONUMENT IN HANDHOLE. SEE ROAD DEPT. F.B.2512-723,724, F.B.500-2,24,44, F.B.2297-232. F.B.2758-25
- ⑧ FOUND SPIKE, WASHER & TIN. SEE ROAD DEPT. F.B.2297-232 544 & 545. F.B.2297-232
- ⑨ FOUND ROAD DEPT. BRASS CAP MONUMENT IN HANDHOLE. SEE ROAD DEPT. F.B.2512-711 & 712. F.B.2297-231
- ⑩ FOUND MONUMENT WITH SMALL PUNCH MARK. SEE F.B.2297-232 F.B.2758-24
- ⑪ FOUND SPIKE, WASHER & TIN. SEE ROAD DEPT. F.B.2512-544 & 545. F.B.2297-232
- ⑫ FOUND ROAD DEPT. BRASS CAP MONUMENT IN HANDHOLE. SEE ROAD DEPT. F.B.2512-723 & 724. F.B.2297-231
- ⑬ FOUND ROAD DEPT. BRASS CAP MONUMENT IN HANDHOLE. SEE ROAD DEPT. F.B.2512-723 & 724. F.B.2758-30,33,34
- ⑭ FOUND ROAD DEPT. BRASS CAP MONUMENT IN HANDHOLE. SEE ROAD DEPT. F.B.238-152. F.B.2758-40 & 41
- ⑮ FOUND SPIKE, WASHER & TIN. SEE ROAD DEPT. F.B.493-94. F.B.2758-37
- ⑯ FOUND 1 1/2" IRON PIPE WITH WOOD PLUG & TACK. F.B.2758-33
- ⑰ FOUND SPIKE, WASHER & TIN. F.B.2758-32
- ⑱ ANGLE POINT FOUND BOAT SPIKE & WASHER. SEE ROAD DEPT. F.B.2512-61, F.B.2758-73
- ⑲ FOUND LEAD & TACK. SEE F.B. 943-8. F.B.2758-74,75
- ⑳ ANGLE POINT FOUND ROAD DEPT. BRASS CAP MONUMENT IN HANDHOLE. SEE ROAD DEPT. F.B.2512-716. F.B.2578-25
- ㉑ FOUND COUNTY ENGINEER BRASS CAP MONUMENT IN HANDHOLE. SEE R.O.F.B. 593-65, F.B.3130-32. F.B.2297-231
- ㉒ FOUND 2" IRON PIPE, CONC. PLUG WITH CUT SPIKE & WASHER. 15 BELOW SURFACE. SEE F.B.073-125. F.B.2758-73
- ㉓ FOUND BOAT SPIKE & WASHER MARKED "L.A. CO. ENGR." 02 WEST OF LINE. REMOVED SAME. REPLACED WITH BOAT SPIKE & WASHER STAMPED L.A. CO. ENGINEER. F.B.2758-74
- ㉔ FOUND SPIKE & WASHER. SEE F.B.2297-225 & F.B.3298-7. F.B.2758-27
- ㉕ ANGLE POINT FOUND BOAT SPIKE & WASHER. 1" BELOW SURFACE. SEE ROAD DEPT. F.B.2512-57. F.B.2758-76
- ㉖ FOUND 2" IRON PIPE, CONC. PLUG, BOAT SPIKE & WASHER MARKED: "R.E. 2177". SEE F.B.973-109. F.B.2758-83
- ㉗ FOUND 1 1/2" IRON PIPE, CONC. PLUG & BOAT SPIKE 4" BELOW SURFACE. SEE F.B.973-126. F.B.2758-84
- ㉘ FOUND 2" IRON PIPE WITH NO PLUG, 6" ABOVE SURFACE. USED CENTER. SEE F.B.973-110. F.B.2758-82
- ㉙ FOUND 2" IRON PIPE WITH NO PLUG. SET CONC. PLUG & BRASS TAG MARKED: "L.A. CO. ENGR." AT RECORD DIST. 178.531 FROM THE C.V.L. OF LYONS AVE. PER C.S.B-1917. F.B.2758-81
- ㉚ FOUND 3" IRON PIPE, CONC. PLUG & COPPER TUBE. SEE F.B.973-103 & 109. F.B.2758-81



COUNTY OF LOS ANGELES DEPARTMENT OF PUBLIC WORKS T. A. TIDEMANSON - COUNTY ENGINEER PREPARED BY MAPPING AND PROPERTY MANAGEMENT DIVISION AND SURVEY DIVISION SURVEYED BY R. C. DALE, J. L. BROWN CHECKED BY J. H. LARJO DRAWN BY B. HILARIO, G. MASUDA	MAP OF CENTRAL NEWHALL AREA STREET CENTER LINES (NEWHALL AREA)		COUNTY SURVEYOR'S MAP NO. B-5529 SHEET 2 OF 3 SHEETS FILED: <u>10/18/88</u> ASST. COUNTY ENGINEER
	BASIS OF BEARINGS THE CENTER LINE OF NEWHALL AVENUE (N34°25'00"W) AS SHOWN ON C.S.B-2957		REFERENCE F.B.2758 F.B.3867
	JOB NUMBER M8732001		INDEX MAP NO. 62 A-3
	MAY 1966 (JUNE 1971)		

CURVE DATA				
NO	Δ	R	T	L
①	70°17'53"	50.00	35.20	61.35

- ① FOUND SPIKE WASHER & TIN MARKED: "R.C.E. 10533", FLUSH WITH SURFACE. SEE F.B.3073-85. F.B.2758-51
- ② B.C. FOUND SPIKE WASHER & TIN MARKED: "R.C.E.10533", FLUSH WITH SURFACE. SEE F.B.3073-84. F.B.2758-52
- ③ P.I. FOUND #8 NAIL. F.B.2758-52
- ④ FOUND SPIKE, WASHER & TIN MARKED: "R.C.E. 10533", FLUSH WITH SURFACE. SEE F.B.3073-84. F.B.2758-52
- ⑤ FOUND SPIKE, WASHER & TIN MARKED: "R.C.E. 10533", FLUSH WITH SURFACE. SEE F.B.3073-83. F.B.2758-52
- ⑥ FOUND LEAD & TAG MARKED: "R.C.E. 10533", SEE F.B.3073-83. F.B.2758-52



COUNTY OF LOS ANGELES DEPARTMENT OF PUBLIC WORKS T. A. TIDEMANSON - COUNTY ENGINEER PREPARED BY MAPPING AND PROPERTY MANAGEMENT DIVISION AND SURVEY DIVISION SURVEYED BY R.C. OALE & L.B. BROWN CHECKED BY J. R. HILARIO DRAWN BY J. R. HILARIO & G. MASUDA	MAP OF CENTRAL NEWHALL AREA STREET CENTER LINES (NEWHALL AREA)		COUNTY SURVEYOR'S MAP NO B-5529 SHEET 3 OF 3 SHEETS FILED: 10/18/1988 ASST. DEPUTY DIRECTOR
	BASIS OF BEARINGS THE CENTER LINE OF NEWHALL AVENUE (N34°25'00"W) AS SHOWN ON C.S.B-2957		SURVEYED MAY 1966 (JUNE 1971) REFERENCE F.B.2758 F.B.3867
			JOB NUMBER M8732001
			INDEX MAP NO 62 A-3