

C.2.B-2231-1

SECTION 23, T. 5 N., R. 14 W.

23 24

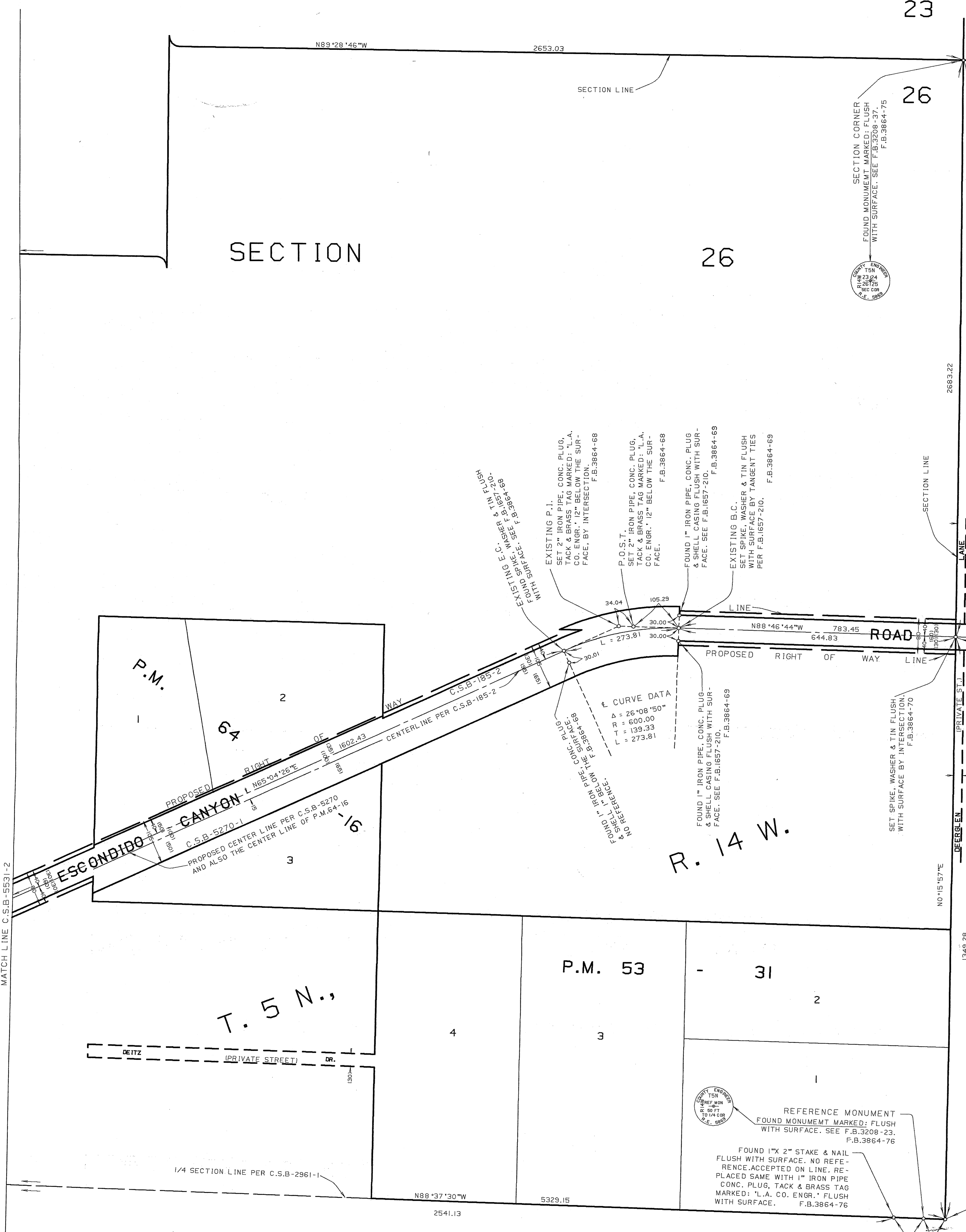
26 25

R. 14 W.

T. 5 N.

SECTION 25,

R. 14 W.



MATCH LINE C.S.B.-5521-2

P.M.

T. 5 N.,

P.M. 53

31

2

4

2541.13

5329.15

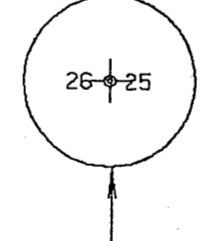
1349.28

NO 15° 57' E

DEERBEN PRIVATE ST.

2683.22

1333.94



EXISTING P.I.  
SET 2" IRON PIPE, CONC. PLUG,  
TACK & BRASS TAG MARKED: "L.A.  
CO. ENGR." 12" BELOW THE SUR-  
FACE, BY INTERSECTION. F.B.3864-68

P.O.S.T.  
SET 2" IRON PIPE, CONC. PLUG,  
TACK & BRASS TAG MARKED: "L.A.  
CO. ENGR." 12" BELOW THE SUR-  
FACE. F.B.3864-68

FOUND 1" IRON PIPE, CONC. PLUG  
& SHELL CASING FLUSH WITH SUR-  
FACE. SEE F.B.1657-20. F.B.3864-69

EXISTING B.C.  
SET SPIKE, WASHER & TIN FLUSH  
WITH SURFACE BY TANGENT TIES  
PER F.B.1657-20. F.B.3864-69

FOUND 1" IRON PIPE, CONC. PLUG  
& SHELL CASING FLUSH WITH SUR-  
FACE. SEE F.B.1657-20. F.B.3864-69

FOUND 1" IRON PIPE, CONC. PLUG  
& SHELL CASING FLUSH WITH SUR-  
FACE. SEE F.B.1657-20. F.B.3864-71

SET SPIKE, WASHER & TIN FLUSH  
WITH SURFACE BY TANGENT TIES  
PER F.B.1657-20. F.B.3864-71

FOUND 1" IRON PIPE, CONC. PLUG  
& SHELL CASING FLUSH WITH SUR-  
FACE. SEE F.B.1657-20. F.B.3864-71

SET SPIKE, WASHER & TIN FLUSH  
WITH SURFACE BY TANGENT TIES  
PER F.B.1657-20. F.B.3864-71

ε CURVE DATA  
A = 26°08'50"  
R = 600.00  
T = 139.33  
L = 273.81

PROPOSED CENTER LINE PER C.S.B.-5270  
AND ALSO THE CENTER LINE OF P.M.54-16

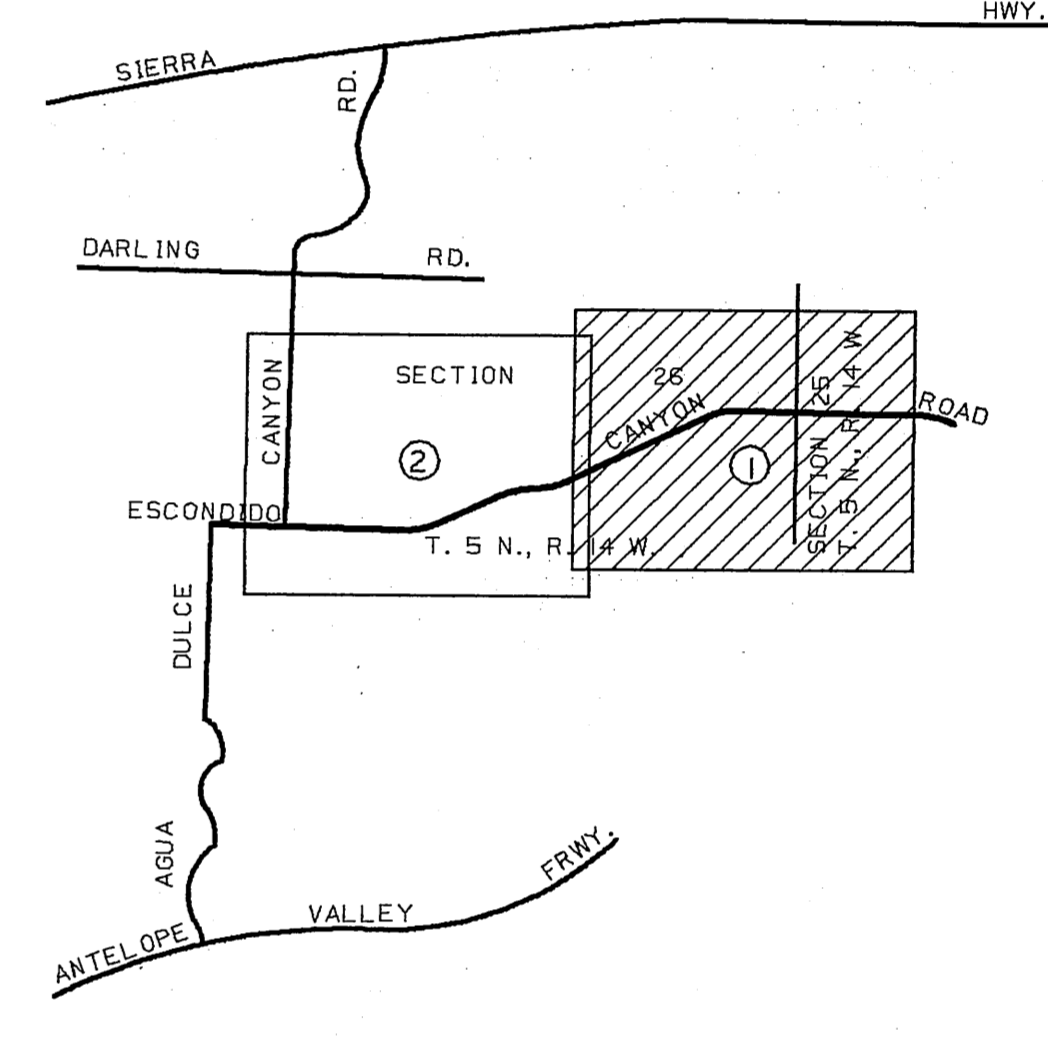
PROPOSED RIGHT OF WAY  
C.S.B.-185-2

PROPOSED CENTER LINE PER C.S.B.-5270  
AND ALSO THE CENTER LINE OF P.M.54-16

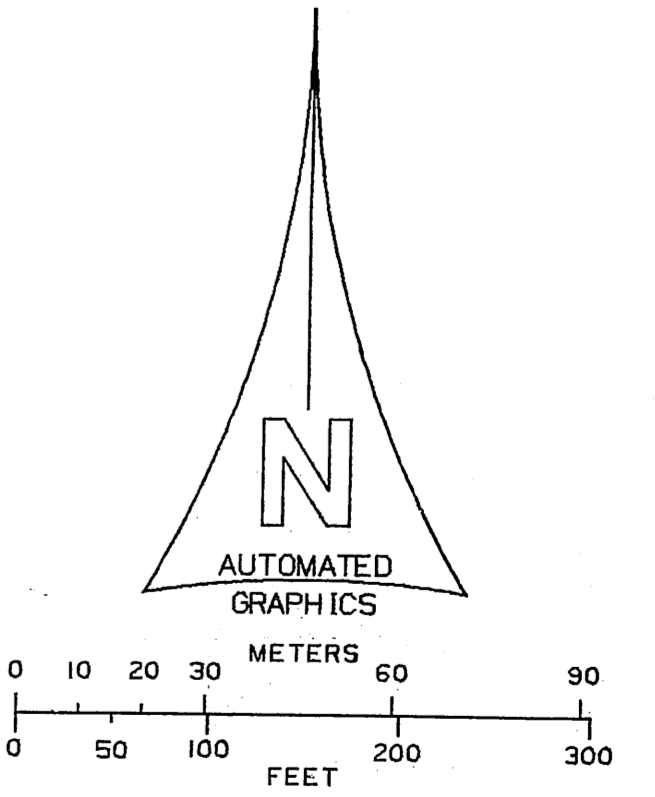
PROPOSED RIGHT OF WAY  
C.S.B.-185-2

NOTE:  
THIS MAP SUPERSEDES THE ALIGNMENT OF ESCONDIDO CANYON ROAD  
AS SHOWN ON SHEETS 1 & 2 OF C.S.B-5270. SEE I.E.C. MINUTES  
DATED JANUARY 29,1987.

ALSO SHOWN IS THE RECLASSIFICATION FROM A MAJOR HIGHWAY  
TO A SECONDARY HIGHWAY AS SHOWN ON THE LOS ANGELES  
COUNTY GENERAL PLAN NOVEMBER 1980.



INDEX MAP NOT TO SCALE



COUNTY OF LOS ANGELES DEPARTMENT OF PUBLIC WORKS T. A. TIDEMANSON - COUNTY ENGINEER PREPARED BY MAPPING AND PROPERTY MANAGEMENT DIVISION AND SURVEY DIVISION SURVEYED BY <u>R.J. BILIEL</u> CHECKED BY <u>B. J. J. ARLO</u> DRAWN BY <u>B. J. J. ARLO, G. MASUDA</u>	MAP OF <b>ESCONDIDO CANYON ROAD</b> FROM <b>EAST LINE SECTION 26, T.5N., R.14W.</b> TO <b>AGUA DULCE CANYON ROAD</b> BASIS OF BEARINGS	COUNTY SURVEYOR'S MAP NO <b>B-5531</b> SHEET 1 OF 2 SHEETS FILED: <u>9/28/82</u> 1982 ASST. DEPUTY DIRECTOR SURVEYED DEC. 24 - JAN. 75 REFERENCE F.B.3864
	THE 1/4 SECTION LINE OF SECTION 26, T. 5 N., R. 14 W. (N38°37'30"W) AS SHOWN ON C.S.B-2961-1.	

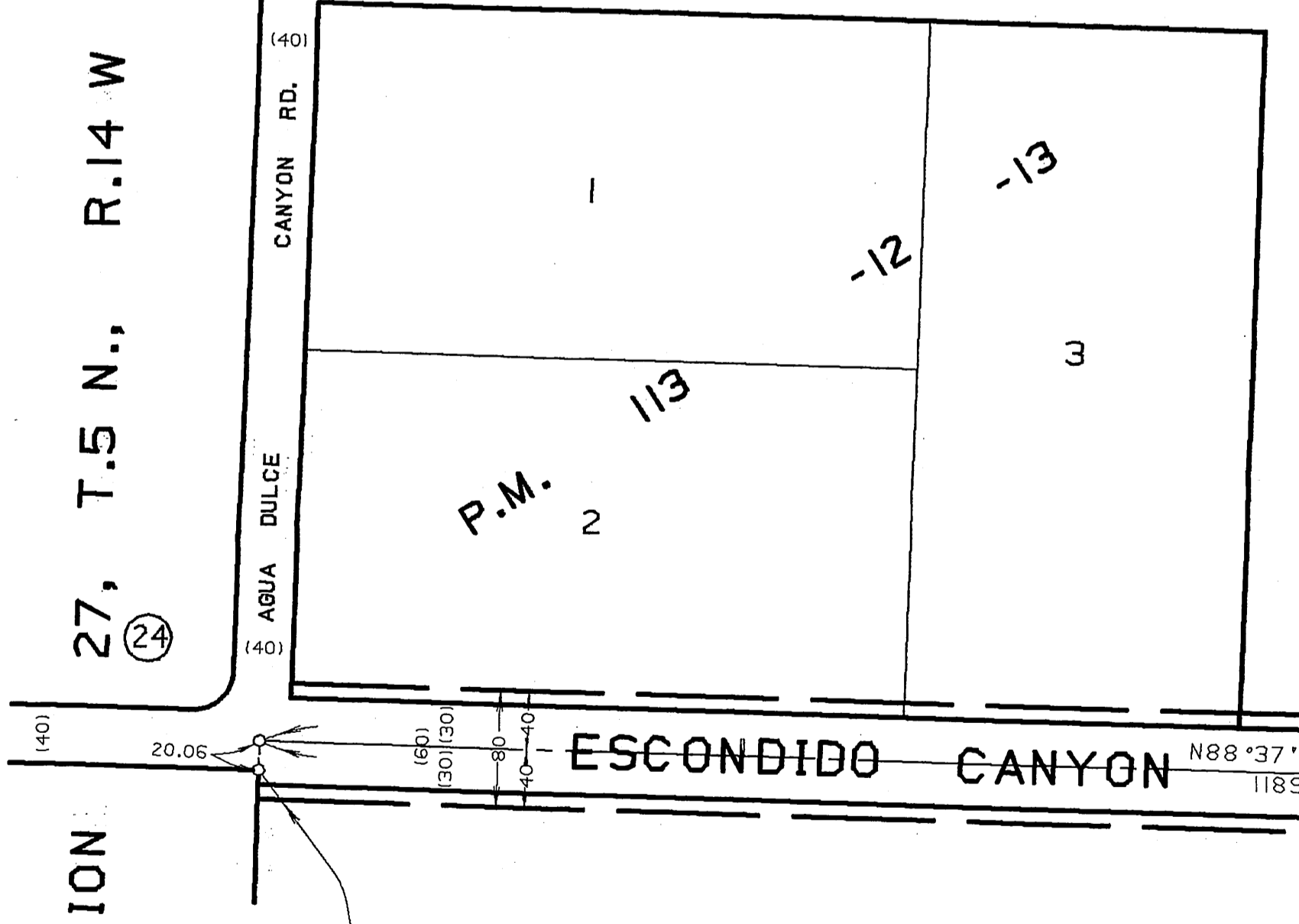
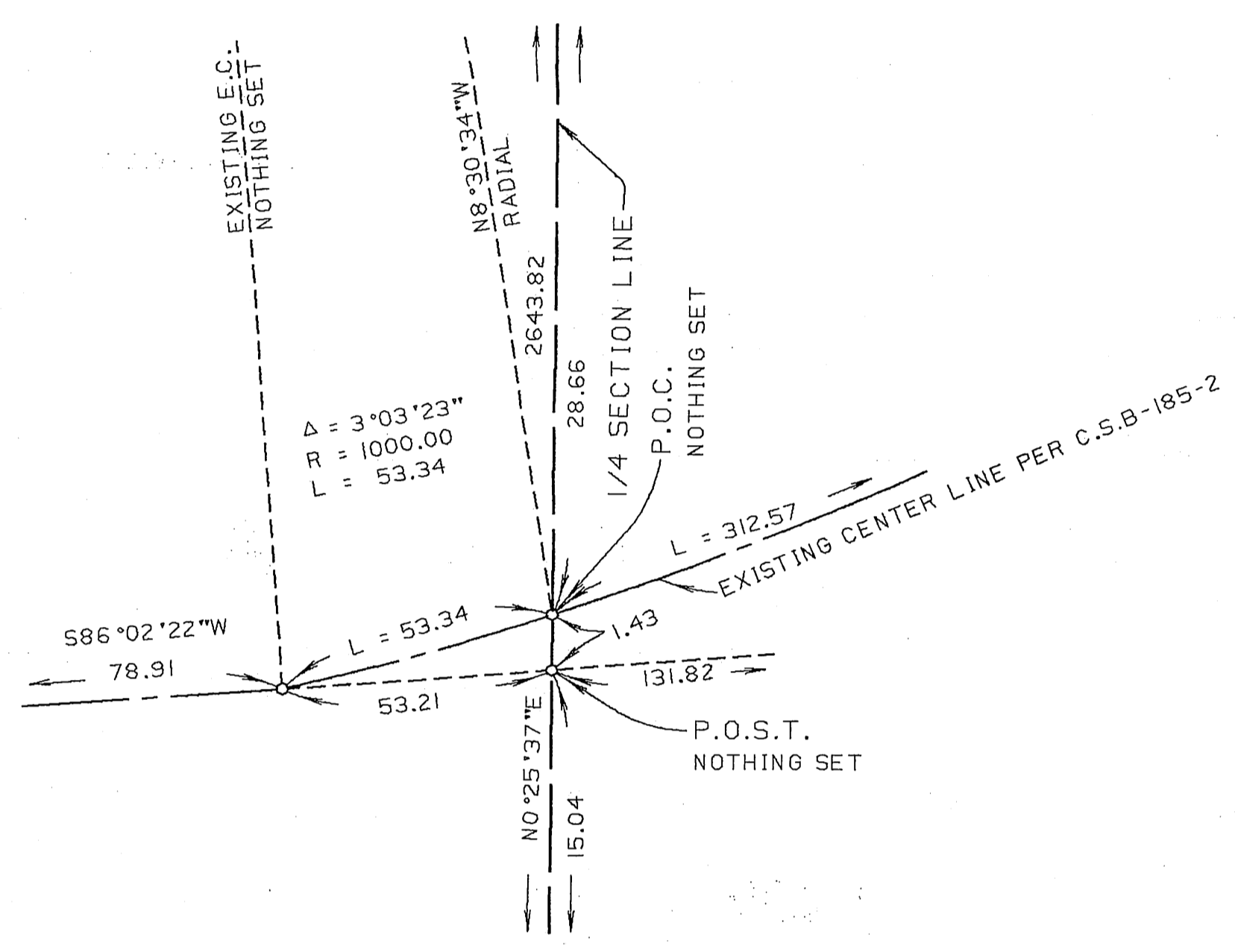
C.2.B-2231-1

SECTION 23, T. 5 N., R. 14 W.

- 14 1/64 SECTION CORNER FOUND LEAD, TACK & BRASS TAG MARKED: 'L.A. CO. ENGR.' ON FACE OF ROCK. SEE F.B.3208-78. F.B.3864-73,79
- 15 FOUND LEAD, TACK & BRASS TAG MARKED: 'L.A. CO. ENGR.' ON TOP OF ROCK. SEE F.B.3208-78. F.B.3864-73,79
- 16 SET 1" IRON PIPE, CONC. PLUG, TACK & BRASS TAG MARKED: 'L.A. CO. ENGR.' 1" BELOW THE SURFACE. F.B.3864-73
- 17 SET 1" IRON PIPE, CONC. PLUG, TACK & BRASS TAG MARKED: 'L.A. CO. ENGR.' 1" ABOVE THE SURFACE. F.B.3864-61
- 18 SET 2" IRON PIPE, CONC. PLUG, TACK & BRASS TAG MARKED: 'L.A. CO. ENGR.' 12" BELOW THE SURFACE BY INTERSECTION. F.B.3864-61
- 19 P.I. FOUND 3/4" IRON PIPE, CONC. PLUG, TACK & BRASS TAG MARKED: 'L.A. CO. ENGR.' 20" BELOW THE SURFACE. F.B.3864-61
- 20 P.O.S.T.-1/16 SECTION CORNER FOUND 1/2" IRON PIPE, CONC. PLUG, TACK & BRASS TAG MARKED: 'L.A. CO. ENGR.' SEE F.B.3208-60. REPLACED SAME WITH MONUMENT, MARKED: IN HANDHOLE. F.B.3864-60
- 21 P.O.S.T. FOUND SPIKE, WASHER & TIN FLUSH WITH SURFACE. SEE RD. DEPT. F.B. 2918-39. F.B.3864-60
- 22 1/64 SECTION CORNER FOUND 3/4" IRON PIPE, CONC. PLUG, TACK & BRASS TAG MARKED: 'L.A. CO. ENGR.' FLUSH WITH SURFACE. SEE F.B.3208-76, & C.S.B-2961. F.B.3864-64
- 23 1/4 SECTION CORNER FOUND MONUMENT MARKED: 4" BELOW THE SURFACE. SEE F.B.3208-40. F.B.3864-66
- 24 1/4 SECTION CORNER FOUND MONUMENT MARKED: IN HANDHOLE. SEE F.B.1476-254. F.B.3864-59

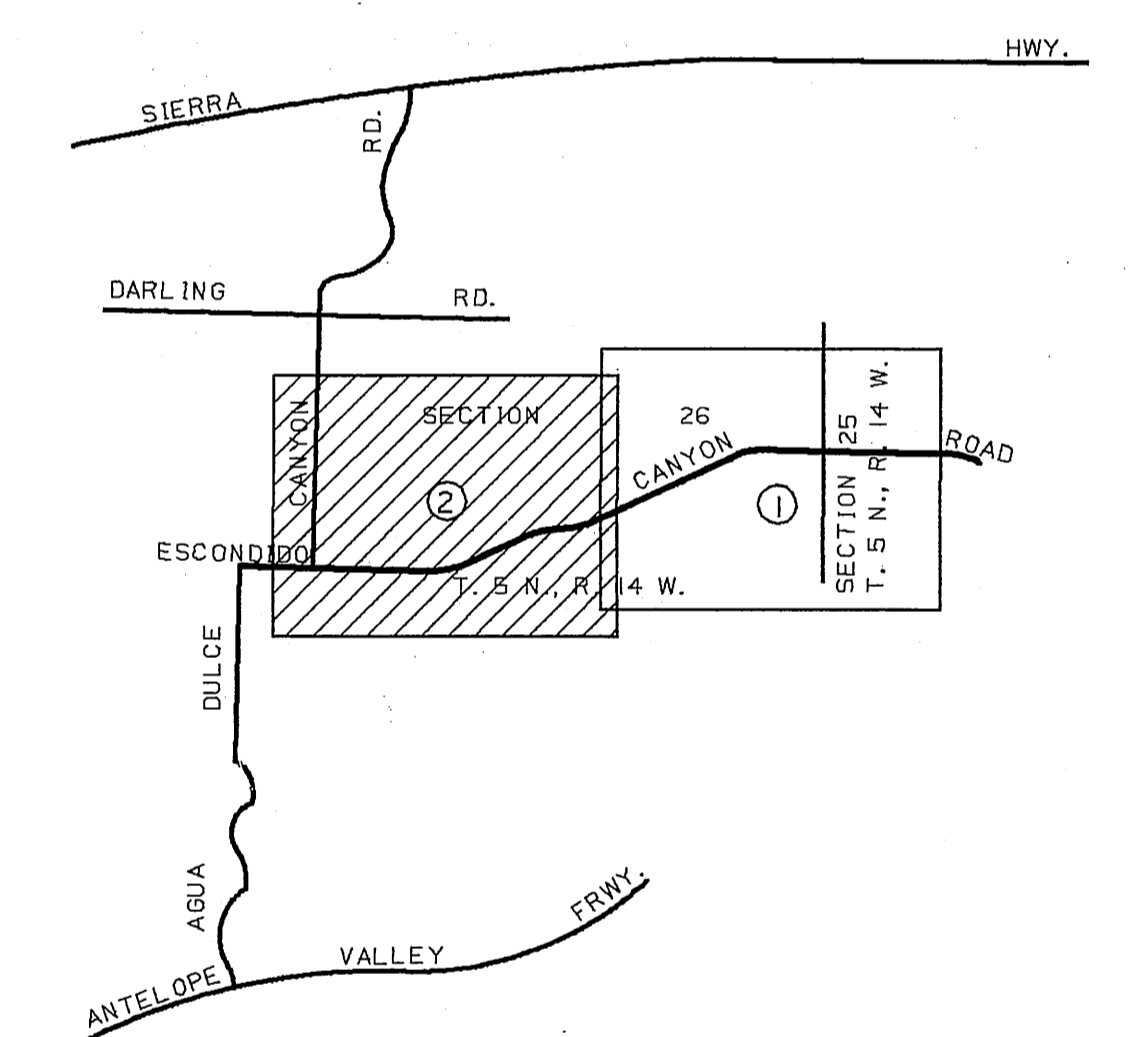
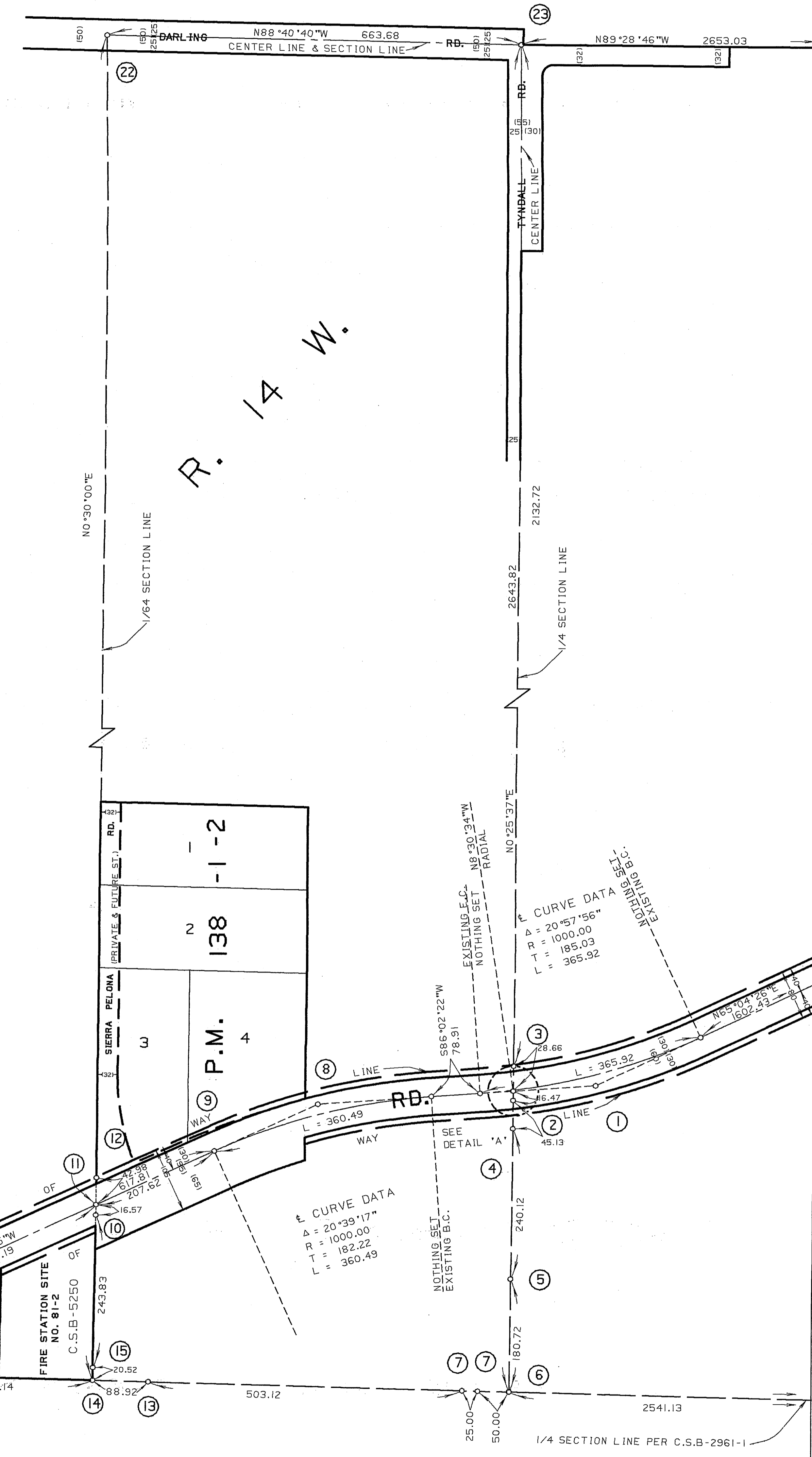
- 8 P.I. SET 1" IRON PIPE, CONC. PLUG, TACK & BRASS TAG MARKED: 'L.A. CO. ENGR.' 12" BELOW THE SURFACE BY TIES PER F.B.3208-80. F.B.3864-63
- 9 E.C. FOUND SPIKE, WASHER & TIN FLUSH WITH SURFACE. SEE ROAD DEPT. F.B.2918-37,38. F.B.3864-62
- 10 SET SPIKE & WASHER FLUSH WITH SURFACE BY INTERSECTION. F.B.3864-62
- 11 FOUND SPIKE & WASHER FLUSH WITH SURFACE. SEE F.B.3208-80. F.B.3864-62,80
- 12 SET 1" IRON PIPE, CONC. PLUG, TACK & BRASS TAG MARKED: 'L.A. CO. ENGR.' 1" ABOVE THE SURFACE. F.B.3864-62
- 13 SET LEAD, TACK & BRASS TAG MARKED: 'L.A. CO. ENGR.' ON TOP OF ROCK. F.B.3864-73,79

- 1 P.I. FOUND 1" IRON PIPE, NO PLUG 10" BELOW THE SURFACE. SEE F.B.1659-69 AND ROAD DEPT. F.B.2918-41,42. SET CONC. PLUG, TACK & BRASS TAG MARKED: 'L.A. CO. ENGR.' BY TIES PER RD. DEPT. F.B.2918-41,42. F.B.3864-67
- 2 SET 1" IRON PIPE, CONC. PLUG, TACK & BRASS TAG MARKED: 'L.A. CO. ENGR.' FLUSH WITH SURFACE BY INTERSECTION. F.B.3864-65
- 3 SET 1" IRON PIPE, CONC. PLUG, TACK & BRASS TAG MARKED: 'L.A. CO. ENGR.' 1" ABOVE THE SURFACE. F.B.3864-65
- 4 SET 1" IRON PIPE, CONC. PLUG, TACK & BRASS TAG MARKED: 'L.A. CO. ENGR.' FLUSH WITH SURFACE. F.B.3864-65
- 5 FOUND 1" X 2" STAKE & NAIL FLUSH WITH SURFACE. SEE F.B.3208-16. REPLACED SAME WITH 1" IRON PIPE CONC. PLUG, TACK & BRASS TAG MARKED: 'L.A. CO. ENGR.' FLUSH WITH SURFACE. F.B.3864-74
- 6 CENTER OF SECTION FOUND MONUMENT MARKED: 4" ABOVE SURFACE. SEE F.B. 3208-20. F.B.3864-74
- 7 SET 2" IRON PIPE, CONC. PLUG, TACK & BRASS TAG MARKED: 'L.A. CO. ENGR.' 2" ABOVE THE SURFACE. F.B.3864-74



NOTE:  
THIS MAP SUPERSEDES THE ALIGNMENT OF ESCONDIDO CANYON ROAD AS SHOWN ON SHEETS 1 & 2 OF C.S.B-5270. SEE I.E.C. MINUTES DATED JANUARY 29, 1987.

ALSO SHOWN IS THE RECLASSIFICATION FROM A MAJOR HIGHWAY TO A SECONDARY HIGHWAY AS SHOWN ON THE LOS ANGELES COUNTY GENERAL PLAN NOVEMBER 1980.



COUNTY OF LOS ANGELES DEPARTMENT OF PUBLIC WORKS T. A. TIDEMANSON - COUNTY ENGINEER PREPARED BY MAPPING AND PROPERTY MANAGEMENT DIVISION AND SURVEY DIVISION SURVEYED BY <u>R. HILARIO</u> CHECKED BY <u>R. HILARIO</u> DRAWN BY <u>R. HILARIO, G. MASUDA</u>	MAP OF <b>ESCONDIDO CANYON ROAD</b> FROM <b>EAST LINE SECTION 26, T. 5 N., R. 14 W.</b> TO <b>AGUA DULCE CANYON ROAD</b> BASIS OF BEARINGS THE 1/4 SECTION LINE OF SECTION 26, T. 5 N., R. 14 W. (N38°37'30"W) AS SHOWN ON C.S.B-2961-1.		COUNTY SURVEYOR'S MAP NO <b>B-5531</b> SHEET 2 OF 2 SHEETS FILED: <u>2/28/87</u> 1987 ASST. DEPUTY DIRECTOR SURVEYED DEC. 74 - JAN. 75 REFERENCE F.B.3864
	JOB NUMBER E0387001		INDEX MAP NO 273-177