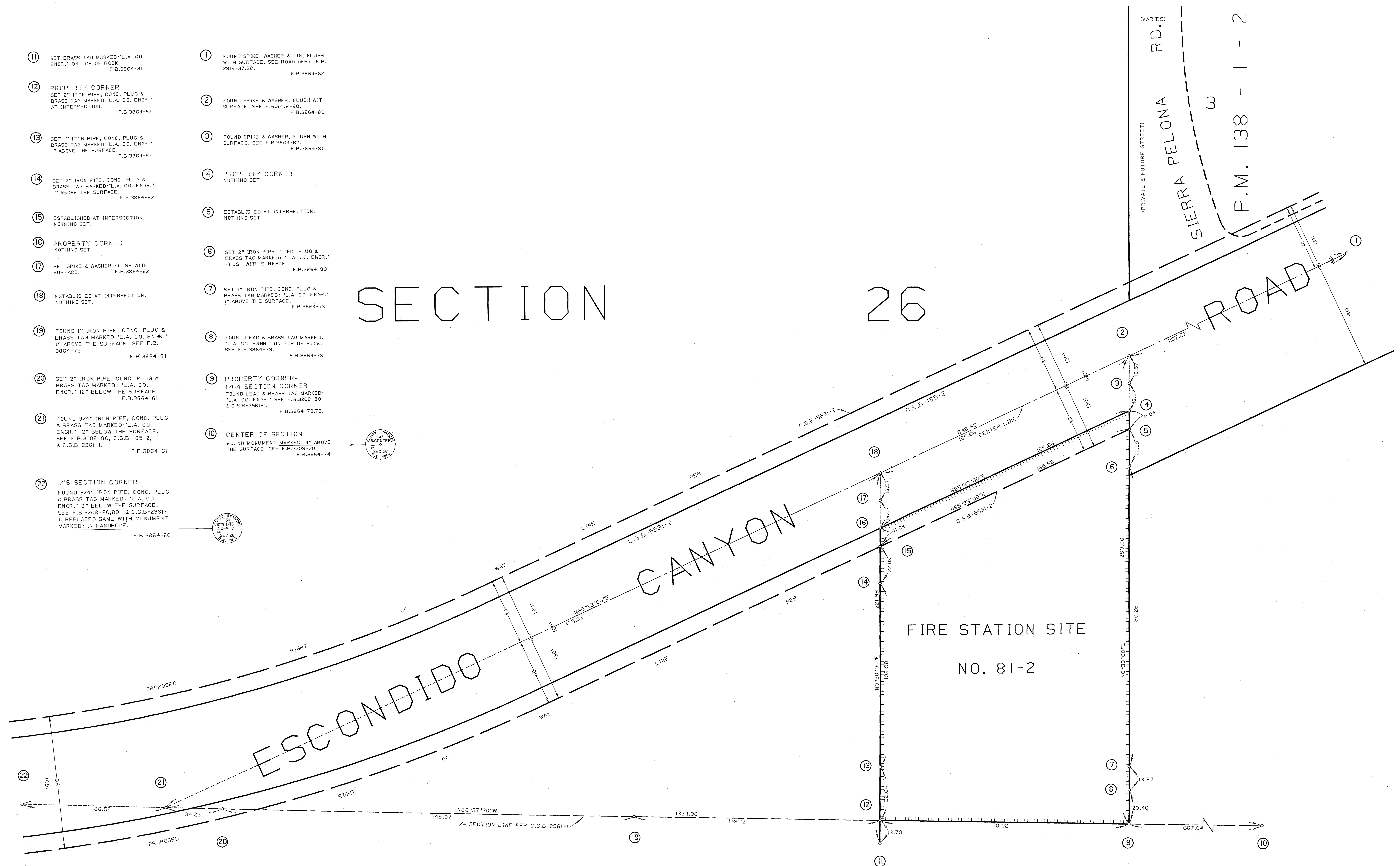


C.2.B-2235

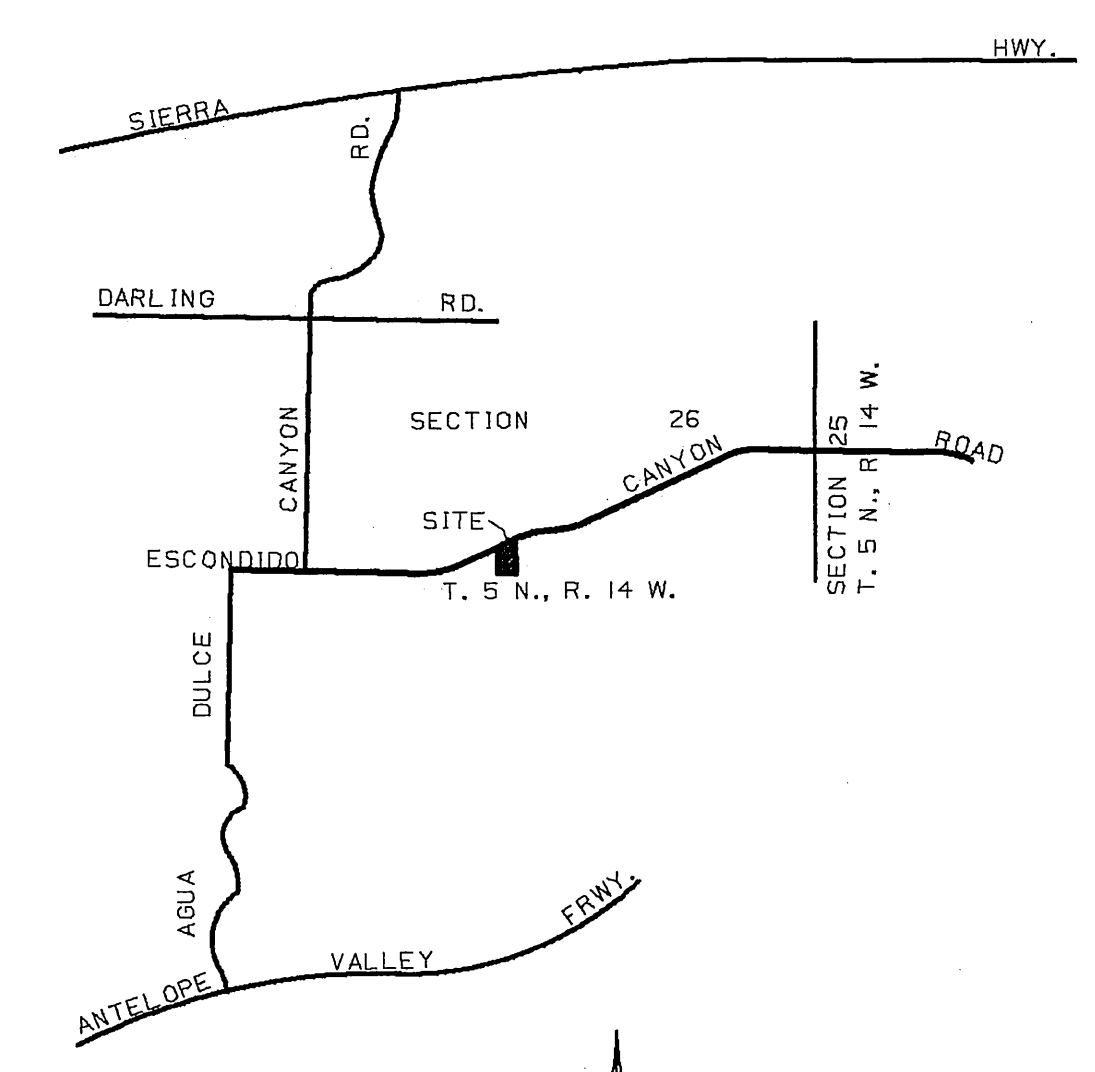
- ① SET BRASS TAG MARKED: 'L.A. CO. ENGR.' ON TOP OF ROCK. F.B.3864-81
- ② PROPERTY CORNER SET 2" IRON PIPE, CONC. PLUG & BRASS TAG MARKED: 'L.A. CO. ENGR.' AT INTERSECTION. F.B.3864-81
- ③ SET 1" IRON PIPE, CONC. PLUG & BRASS TAG MARKED: 'L.A. CO. ENGR.' 1" ABOVE THE SURFACE. F.B.3864-81
- ④ SET 2" IRON PIPE, CONC. PLUG & BRASS TAG MARKED: 'L.A. CO. ENGR.' 1" ABOVE THE SURFACE. F.B.3864-82
- ⑤ ESTABLISHED AT INTERSECTION. NOTHING SET.
- ⑥ PROPERTY CORNER NOTHING SET
- ⑦ SET SPIKE & WASHER FLUSH WITH SURFACE. F.B.3864-82
- ⑧ ESTABLISHED AT INTERSECTION. NOTHING SET.
- ⑨ FOUND 1" IRON PIPE, CONC. PLUG & BRASS TAG MARKED: 'L.A. CO. ENGR.' 1" ABOVE THE SURFACE. SEE F.B. 3864-73. F.B.3864-81
- ⑩ SET 2" IRON PIPE, CONC. PLUG & BRASS TAG MARKED: 'L.A. CO. ENGR.' 12" BELOW THE SURFACE. F.B.3864-61
- ⑪ FOUND 3/4" IRON PIPE, CONC. PLUG & BRASS TAG MARKED: 'L.A. CO. ENGR.' 12" BELOW THE SURFACE. SEE F.B.3208-80, C.S.B-185-2, & C.S.B-2961-1. F.B.3864-61
- ⑫ 1/16 SECTION CORNER FOUND 3/4" IRON PIPE, CONC. PLUG & BRASS TAG MARKED: 'L.A. CO. ENGR.' 8" BELOW THE SURFACE. SEE F.B.3209-60, 80 & C.S.B-2961-1. REPLACED SAME WITH MONUMENT MARKED: IN HANDHOLE. F.B.3864-60
- ⑬ FOUND SPIKE, WASHER & TIN. FLUSH WITH SURFACE. SEE ROAD DEPT. F.B. 2919-37,38. F.B.3864-62
- ⑭ FOUND SPIKE & WASHER, FLUSH WITH SURFACE. SEE F.B.3208-80. F.B.3864-80
- ⑮ FOUND SPIKE & WASHER, FLUSH WITH SURFACE. SEE F.B.3864-62. F.B.3864-80
- ⑯ PROPERTY CORNER NOTHING SET.
- ⑰ ESTABLISHED AT INTERSECTION. NOTHING SET.
- ⑱ SET 2" IRON PIPE, CONC. PLUG & BRASS TAG MARKED: 'L.A. CO. ENGR.' FLUSH WITH SURFACE. F.B.3864-80
- ⑳ SET 1" IRON PIPE, CONC. PLUG & BRASS TAG MARKED: 'L.A. CO. ENGR.' 1" ABOVE THE SURFACE. F.B.3864-79
- ㉑ FOUND LEAD & BRASS TAG MARKED: 'L.A. CO. ENGR.' ON TOP OF ROCK. SEE F.B.3864-73. F.B.3864-79
- ㉒ PROPERTY CORNER= 1/64 SECTION CORNER FOUND LEAD & BRASS TAG MARKED: 'L.A. CO. ENGR.' SEE F.B.3208-80 & C.S.B-2961-1. F.B.3864-73,79.
- ㉓ CENTER OF SECTION FOUND MONUMENT MARKED: 4" ABOVE THE SURFACE. SEE F.B.3208-20 F.B.3864-74

# SECTION 26



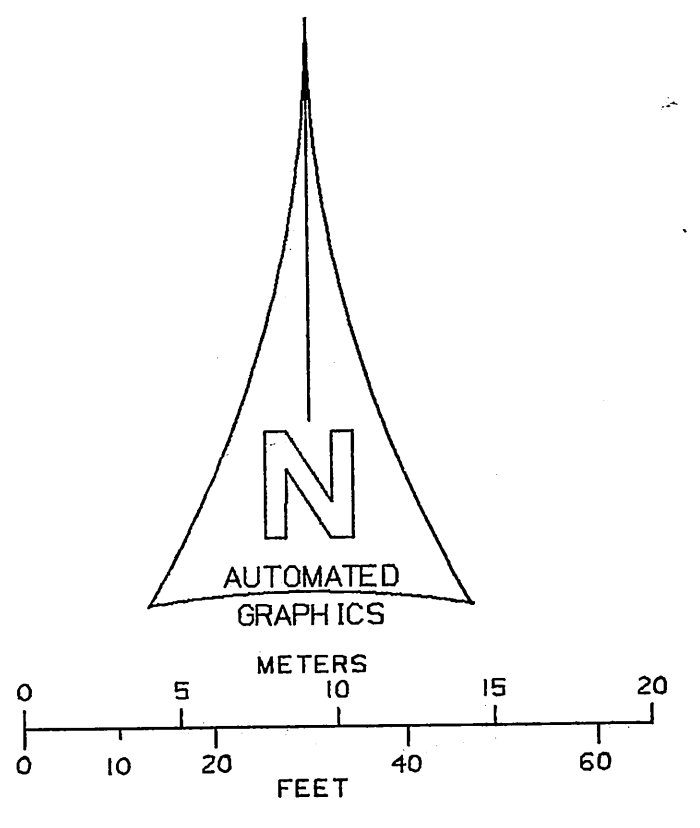
## T. 5 N.,

## R. 14 W.



NOTE:  
THIS MAP SUPERSEDES THE ALIGNMENT OF ESCONDIDO CANYON ROAD AS SHOWN ON C.S.B-5250. SEE I.E.C. MINUTES DATED JANUARY 29, 1987.

ALSO SHOWN IS THE RECLASSIFICATION FROM A MAJOR HIGHWAY TO A SECONDARY HIGHWAY AS SHOWN ON THE LOS ANGELES COUNTY GENERAL PLAN NOVEMBER 1980.



COUNTY OF LOS ANGELES DEPARTMENT OF PUBLIC WORKS T. A. TIDEMANSON - COUNTY ENGINEER PREPARED BY MAPPING AND PROPERTY MANAGEMENT DIVISION AND SURVEY DIVISION SURVEYED BY <u>R. J. BITTEL</u> CHECKED BY <u>R. HILARIO</u> DRAWN BY <u>R. HILARIO, G. MASUDA</u>	MAP OF <b>FIRE STATION SITE NO. 81-2</b> <b>VASQUEZ ROCKS REGIONAL PARK</b> FOR TOPOGRAPHY SEE SURVEY DIVISION FILE MAP P.T. - J-123		COUNTY SURVEYOR'S MAP NO <b>B-5532</b> SHEET 1 OF 1 SHEETS FILED: <u>9/24</u> 1982 <u>Deputy Director</u> SURVEYED DECEMBER, 1974 REFERENCE F.B.3864
	BASIS OF BEARINGS THE S'LY LINE OF THE NW 1/4 OF SECTION 26, T. 5 N., R. 14 W. (N.88°37'30"W.) AS SHOWN ON C.S.B-2961-1		JOB NUMBER E0387001
			INDEX MAP NO 78

C.2.B-2235