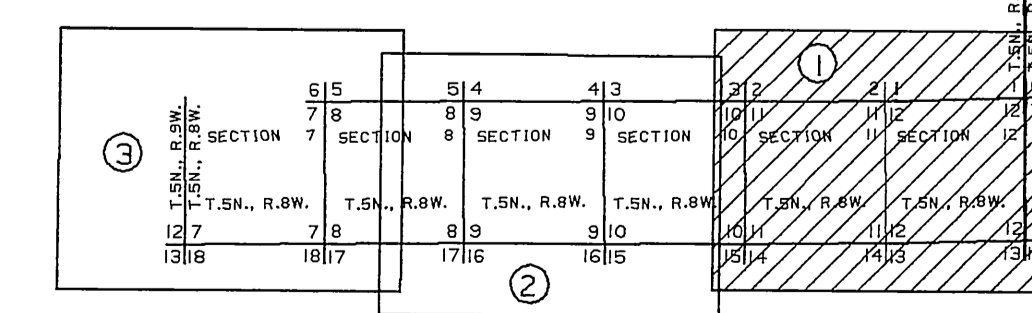


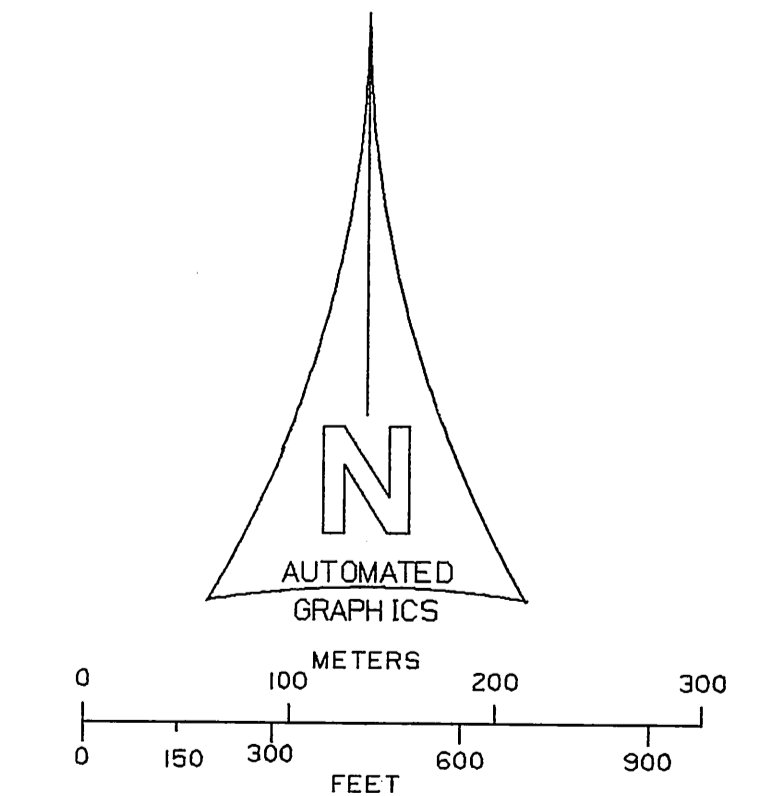
MATCH LINE C.S.B.-5537-2

BOUNDARY COUNTY OF SAN BERNARDINO

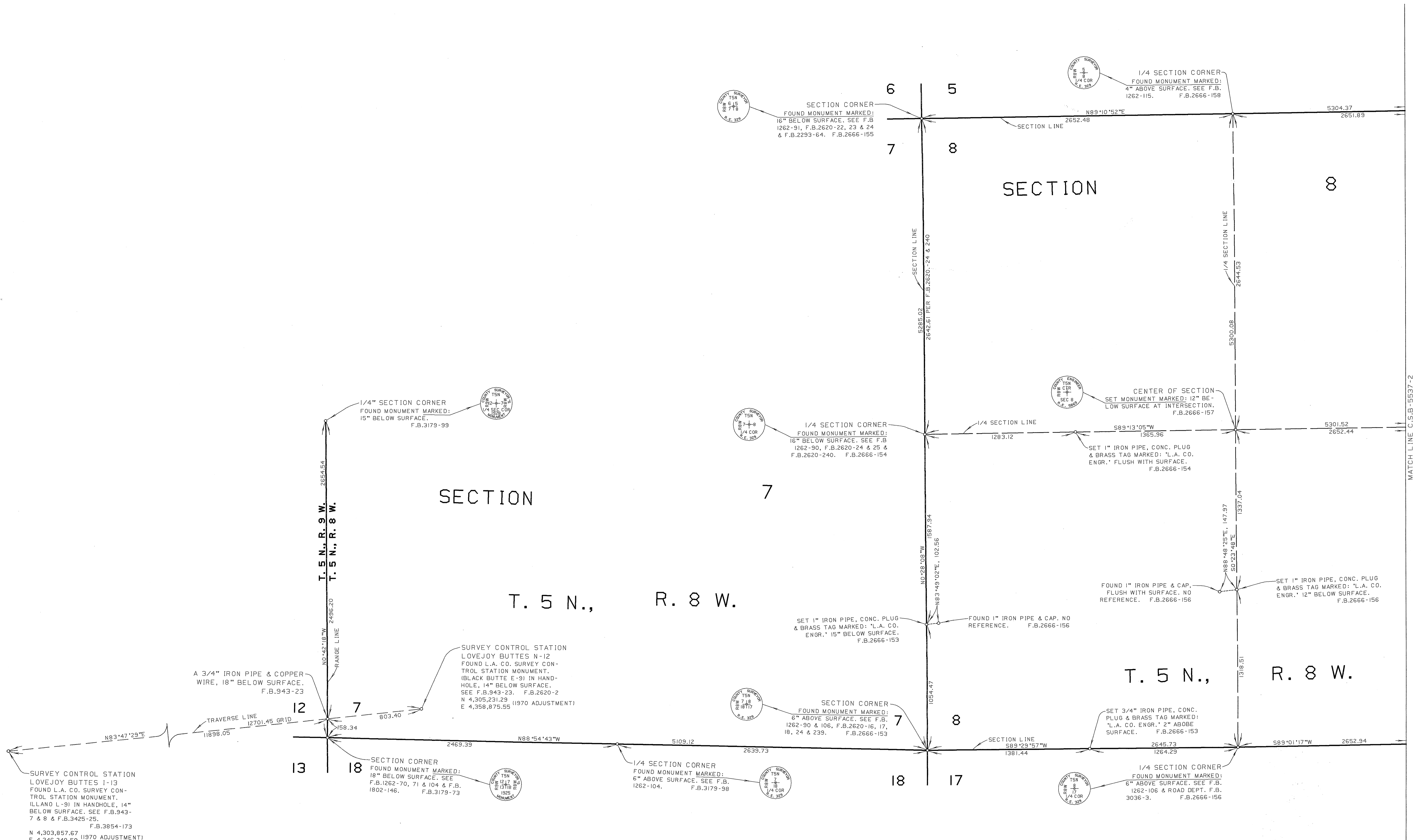


INDEX MAP NOT TO SCALE

NOTE:
 THIS MAP WAS FILED FOR THE PURPOSE OF ESTABLISHING SECTION LINES. ALL OTHER CADASTRAL DATA HAS BEEN OMITTED.



COUNTY OF LOS ANGELES DEPARTMENT OF PUBLIC WORKS T. A. TIDEMANSON - COUNTY ENGINEER PREPARED BY MAPPING AND PROPERTY MANAGEMENT DIVISION AND SURVEY DIVISION SURVEYED BY J. S. COATES CHECKED BY R. HILARIO DRAWN BY G. MASUDA	MAP OF SECTIONS 8, 9, 10, 11 & 12 T. 5 N., R. 8 W., S.B.M.	COUNTY SURVEYOR'S MAP NO B-5537 SHEET 1 OF 3 SHEETS FILED: 1/14/88 2951 DEPT. DIRECTOR SURVEYED JANUARY 1971
	BASIS OF BEARINGS CALIFORNIA COORDINATE SYSTEM, ZONE 7	REFERENCE F.B.2650 F.B.2666 F.B.3179 F.B.3854 JOB NUMBER M8732001 INDEX MAP NO 67



SURVEY CONTROL STATION
LOVEJOY BUTTES I-13
FOUND L.A. CO. SURVEY CON-
TROL STATION MONUMENT.
ILLAND L-91 IN HANDHOLE, 14"
BELOW SURFACE. SEE F.B.943-
7 & 8 & F.B.3425-25.
F.B.3854-173
N 4,303,957.67 (1970 ADJUSTMENT)
E 4,346,248.59

A 3/4" IRON PIPE & COPPER
WIRE, 18" BELOW SURFACE.
F.B.943-23

SECTION CORNER
FOUND MONUMENT MARKED:
18" BELOW SURFACE. SEE
F.B.1262-70, 71 & 104 & F.B.
1802-146. F.B.3179-73

SURVEY CONTROL STATION
LOVEJOY BUTTES N-12
FOUND L.A. CO. SURVEY CON-
TROL STATION MONUMENT.
BLACK BUTTE E-91 IN HAND-
HOLE, 14" BELOW SURFACE.
SEE F.B.943-23. F.B.2620-2
N 4,305,231.23 (1970 ADJUSTMENT)
E 4,358,875.55

1/4 SECTION CORNER
FOUND MONUMENT MARKED:
6" ABOVE SURFACE. SEE F.B.
1262-104. F.B.3179-98

SECTION CORNER
FOUND MONUMENT MARKED:
6" ABOVE SURFACE. SEE F.B.
1262-90 & 106. F.B.2620-16, 17,
18, 24 & 239. F.B.2666-153

SET 1" IRON PIPE, CONC. PLUG
& BRASS TAG MARKED: "L.A. CO.
ENGR." 15" BELOW SURFACE.
F.B.2666-153

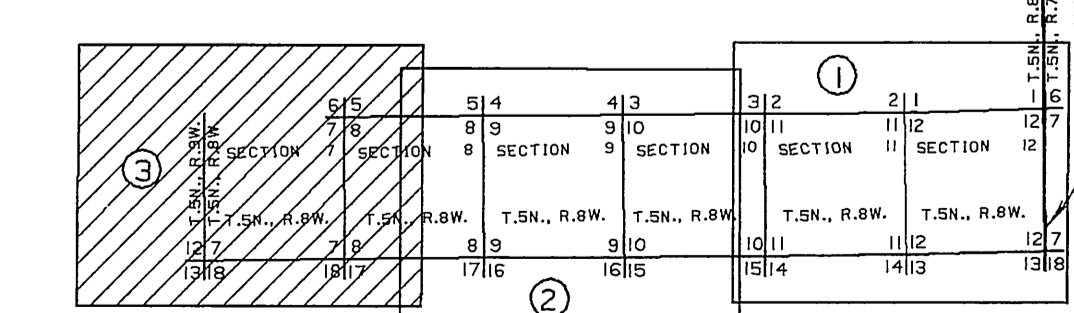
FOUND 1" IRON PIPE & CAP.
NO REFERENCE. F.B.2666-156

FOUND 1" IRON PIPE & CAP.
FLUSH WITH SURFACE. NO
REFERENCE. F.B.2666-156

SET 1" IRON PIPE, CONC. PLUG
& BRASS TAG MARKED: "L.A. CO.
ENGR." 12" BELOW SURFACE.
F.B.2666-156

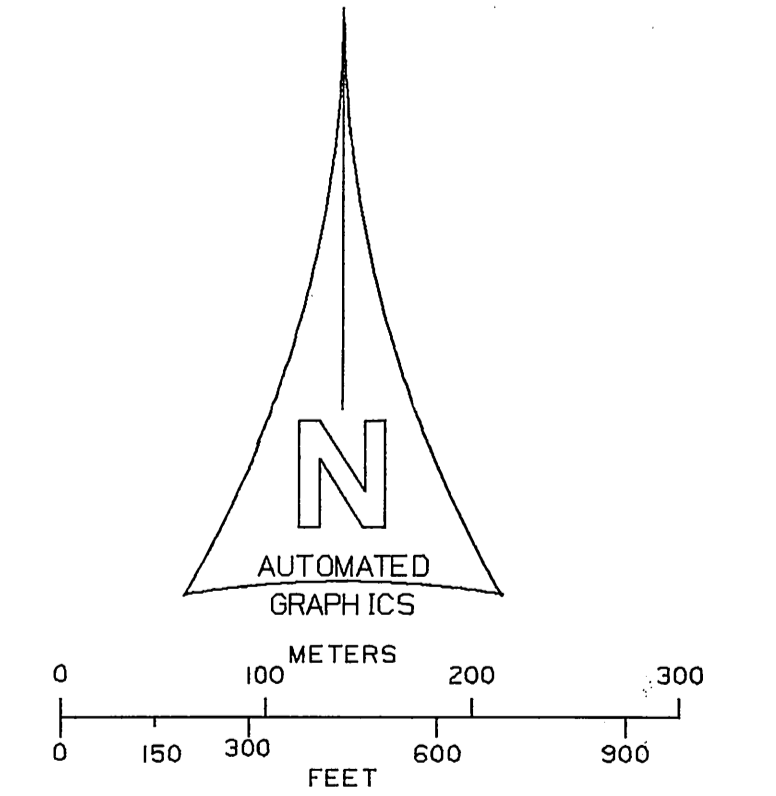
SET 3/4" IRON PIPE, CONC.
PLUG & BRASS TAG MARKED:
"L.A. CO. ENGR." 2" ABOVE
SURFACE. F.B.2666-153

1/4 SECTION CORNER
FOUND MONUMENT MARKED:
6" ABOVE SURFACE. SEE F.B.
1262-106 & ROAD DEPT. F.B.
3036-3. F.B.2666-156



INDEX MAP
NOT TO SCALE

NOTE:
THIS MAP WAS FILED FOR THE PURPOSE OF
ESTABLISHING SECTION LINES. ALL OTHER
CADASTRAL DATA HAS BEEN OMITTED.



COUNTY OF LOS ANGELES DEPARTMENT OF PUBLIC WORKS T. A. TIDEMANSON - COUNTY ENGINEER PREPARED BY MAPPING AND PROPERTY MANAGEMENT DIVISION AND SURVEY DIVISION SURVEYED BY <u>J. S. COATES</u> CHECKED BY <u>D. H. LARIO</u> DRAWN BY <u>S. MASUDA</u>	MAP OF SECTIONS 8, 9, 10, 11 & 12 T. 5 N., R. 8 W., S.B.M.		COUNTY SURVEYOR'S MAP NO B-5537 SHEET 3 OF 3 SHEETS FILED <u>3/4/77</u> 1977 ASST. COUNTY ENGINEER SURVEYED JANUARY 1971 REFERENCE F.B.2620 F.B.2666 F.B.3179 F.B.3854 JOB NUMBER M8732001 INDEX MAP NO 67
	BASIS OF BEARINGS CALIFORNIA COORDINATE SYSTEM, ZONE 7		